

Art Department



Dennis Devoy

www.art-dept.com

Art Department



Dennis Devoe

www.art-dept.com

Art Department



Dennis Devoy

www.art-dept.com

Art Department



Dennis Devoy

www.art-dept.com

Art Department



Miami cotton and leather vest and cotton top. Earrings: from left, Charlotte Chesnais gold vermeil and Still House diamond and 14kt gold.
Hair: Dennis Devo for the Art Department.
Makeup: Pati Dubroff for Forward Artists.
Manicure: Nettie Davis for The Wall Group.



Rambrose Lips
Hesler from the maudrey, Charlette Cassanah silver ring



Miami Jacobs cotton dress. Catbird ear cuff. Hirtzka 18kt gold ring. Apezzura sandals.
Hair: Dennis Devo for Art Department. Makeup: Melissa Iglesias for Forward Artists.
Manicure: Michele Saunders for Forward Artists.



Prada embroidered organza dress, shantung top, and palette earring

Dennis Devo

www.art-dept.com

Art Department

SPRING

AWAKENING

AFTER A WHIRLWIND YEAR SHARING THE SCREEN WITH SOME OF HOLLYWOOD'S HEAVIEST HITTERS, CUBAN-BORN ANA DE ARMAS IS A SINGULAR VISION IN SPLENDID PRINTS AND LUXE TEXTURES

photographed by WALIN TSE
styled by ALI FEW



Diane & Graham
reintroduced the
lattice, while
Mikaela's
and
from
Diane & Graham
and
and
and



Marc Jacobs embroidered
denim jacket, denim pants,
and calf-kick belt. Leanne
cotton poplin trousers
under pants. Tote 4779
diamond and 18k gold
and ring. Giuseppe Zanotti
Design leather pumps

454 | INSTYLE | MARCH 2016



Chanel lambskin jumpsuit
Weekday lime-flocked
earrings and cuff. Define
Delécluse diamond and
18k white gold rings

Dennis Devoey

www.art-dept.com

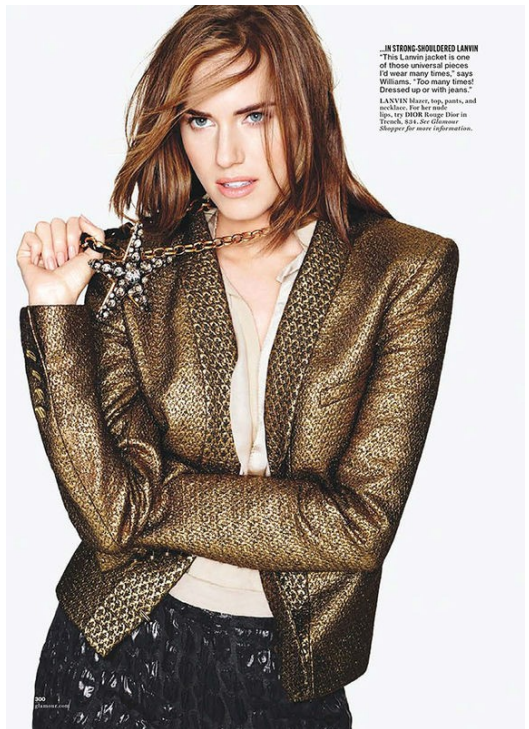
Art Department



Dennis Devoy

www.art-dept.com

Art Department



Dennis Devoy

www.art-dept.com

Art Department



Dennis Devoy

Art Department

Liv, in the MOMENT

This season's chicest '60s-inspired pieces could have been fashioned with LIV TYLER in mind. The actress talks to TOM SHONE about her independent life choices, the importance of good manners and why she is really an old-fashioned girl at heart

*Photographs by MIGUEL REVERIEGO
Styling by NATALIE BREWSTER*



Coat by Rochas



Cape by Moschino
Cheap and Chic, T-shirt
by Calvin Klein
Collection, Skirt by
Mans. Pumps by Jimmy
Choo

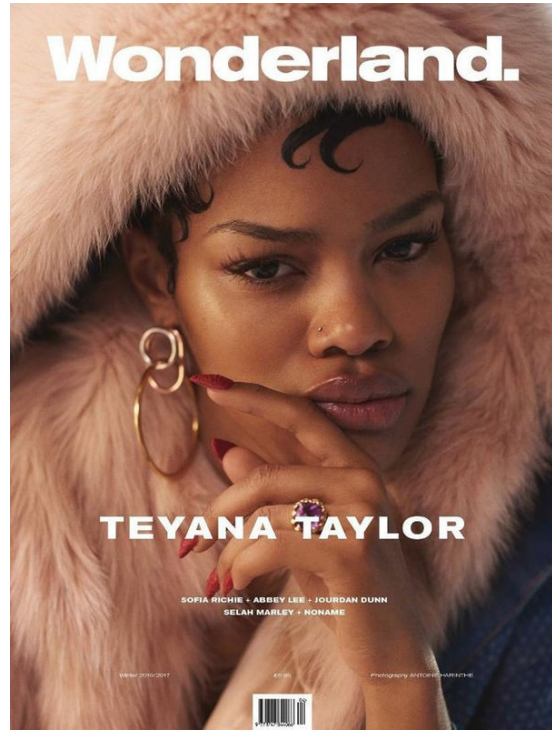


Coat by Nina Ricci, Top
by Antonio Berardi,
Pumps by Jimmy Choo

Dennis Devo

www.art-dept.com

Art Department



Dennis Devoy

www.art-dept.com

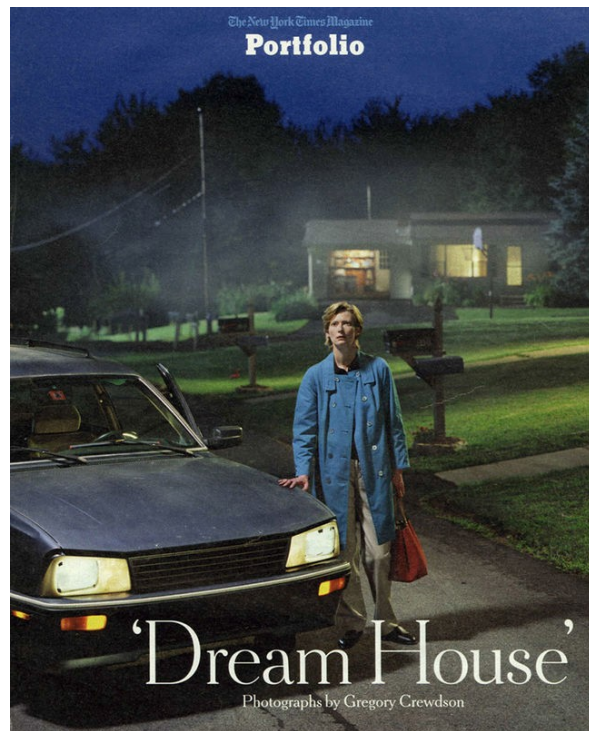
Art Department



Dennis Devoy

www.art-dept.com

Art Department



Dennis Devoy

www.art-dept.com

Art Department



Dennis Devoy

www.art-dept.com

Art Department



Dennis Devoy

www.art-dept.com

Art Department



look out, world

Plaid is *the* pattern now. Love this fitted jacket and pleated skirt layered over leggings—very downtown. (Note Kikuchi's equally downtown ankle boots. So cool.) Jacket, skirt, boots with gaiters. Chanel. See Glamour Shopper for more information.



you talking to me?

Kikuchi clearly has attitude. What makes her suit just as modern as spicy red and the awesome cropped-jacket, pleated-pants shape. Wear it to work, out at night, everywhere. You run this town. Jacket, pants, Thakoon Addition shirt, Agnès B. heels, Robert Clergerie. See Glamour Shopper for more information. Fashion editor: Anne Christensen

street chic

Does actress **Rinko Kikuchi** not have the slammest style you've ever seen? Channel her look in tailored urban pieces—huge this fall.

photographs by Jason Nocito

Dennis Devoy

www.art-dept.com

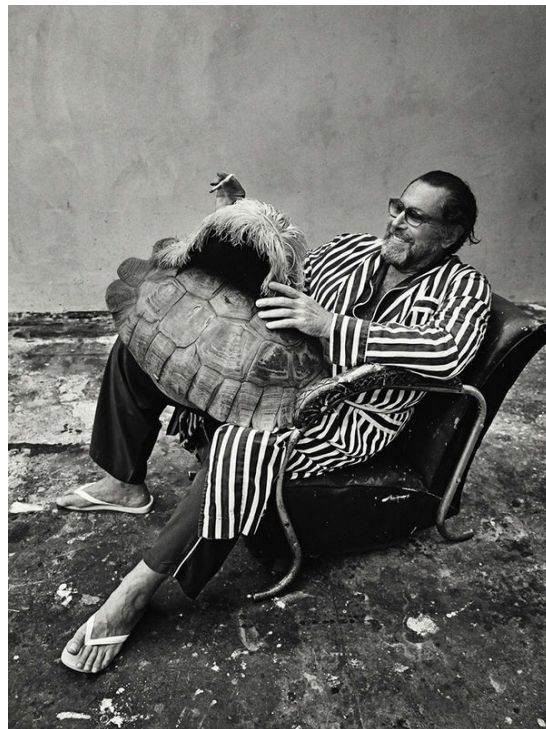
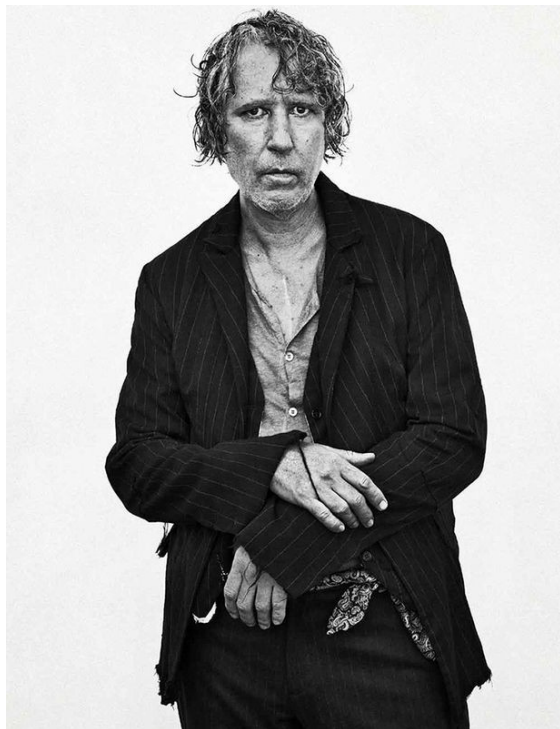
Art Department



Dennis Devoy

www.art-dept.com

Art Department



Dennis Devoy

www.art-dept.com

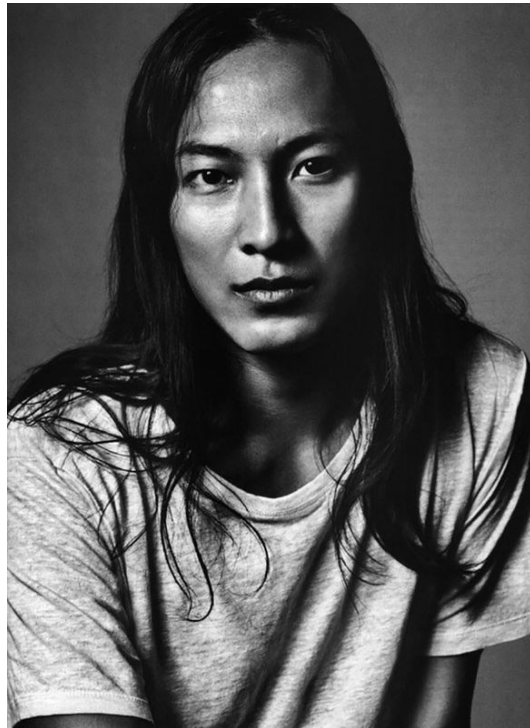
Art Department



Dennis Devoy

www.art-dept.com

Art Department



STEAL OF THE MONTH

Tinted Love

In an endless variety of shapes, sizes, and colors, there's a pair of shades for everyone. Photographed by Sebastian Kim.

I love that in the forties you only saw women in glamorous mode," says actress Juno Temple, who in Mia Mia's cobalt-tinted cat-eye sunglasses, recalls the sultry allure of a young Katharine Hepburn. The film noir features are just one example of spring's character-laden subgenres, from Sofia McArthur's cartoonish round shades to Proenza Schouler's Barman-style rounders. "Different shapes completely change your look," says the British-born, Los Angeles-based actress, who counts eccentric parrot sunglasses in her collection, including Wayfarers, aviators, and John Lennon specs, with green, pink, and metallic lenses so she can "see the world in different colors."

Embracing alternative viewpoints is, after all, paramount to the performer's success. Since her breakthrough appearances in *Knave on a Scaffold* and *Anonymous*, Temple, now 22, has worked almost nonstop and awaits four film releases this year, including *Jack and Diane* (out in June), as Riley Keough's girlfriend, and *The Dark Knight Rises*, the final installment in the Batman trilogy (July), in which she plays a second-ordinary character. "I love a challenge" is all the daughter of film director John Temple and producer Amanda Temple will hint at. The multitasker also plans to learn guitar and put out a lingerie collection "that makes all shapes and sizes feel good." Meanwhile, at a petite knock-out, Temple wears Mia Mia's ladylike fashions to maximum red carpet effect. "You don't have to be a ten-foot knockout to look good," she says. "And that's empowering." **—JENNIFER ANNIS**

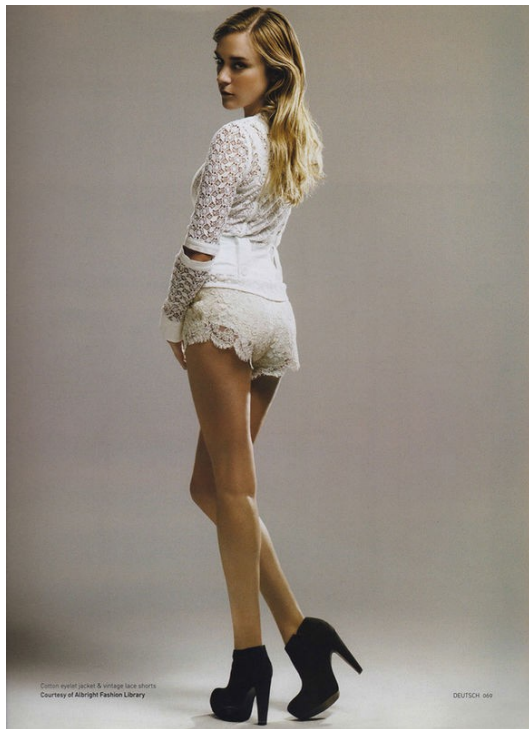


INTO THE BLUE
Actress Juno Temple, aboard *The Queen Mary* in Long Beach, California, wearing Mia Mia hair sunglasses, \$380; for boucliques. The leather dress, \$90; themltd.com. Accessories list, \$25; accessories.com. Hair, Dennis Devoy for Sebastian Professional makeup, Steven Hays's Fashion Editor, Lauren Howell.

Dennis Devoy

www.art-dept.com

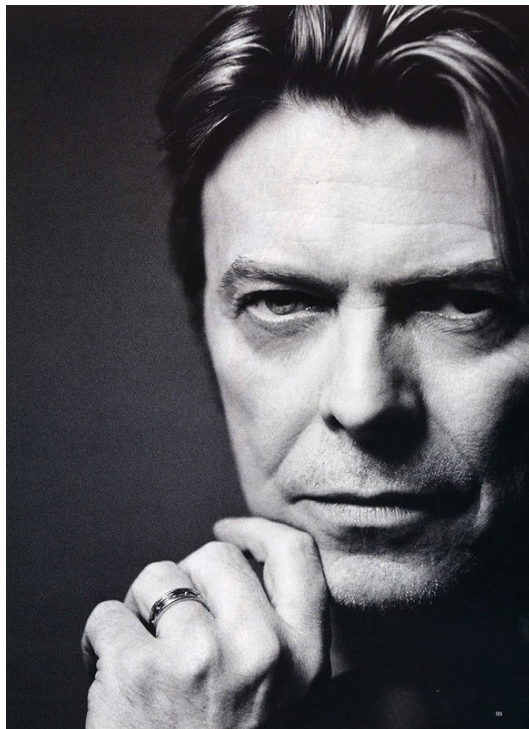
Art Department



Dennis Devoy

www.art-dept.com

Art Department



Dennis Devoy

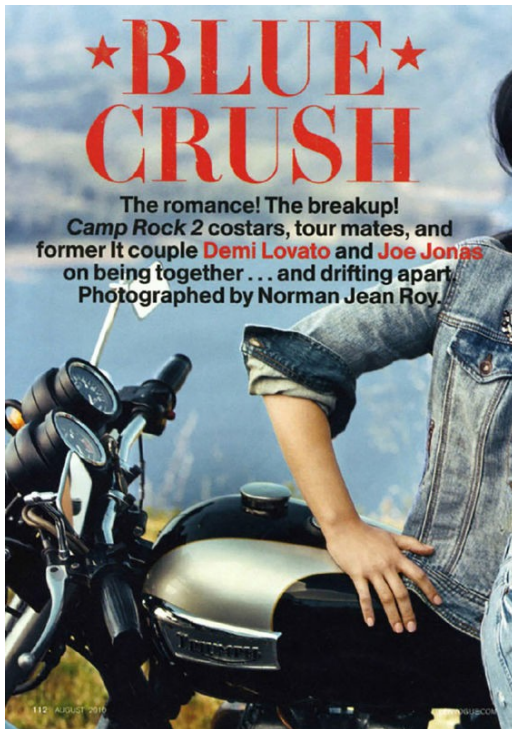
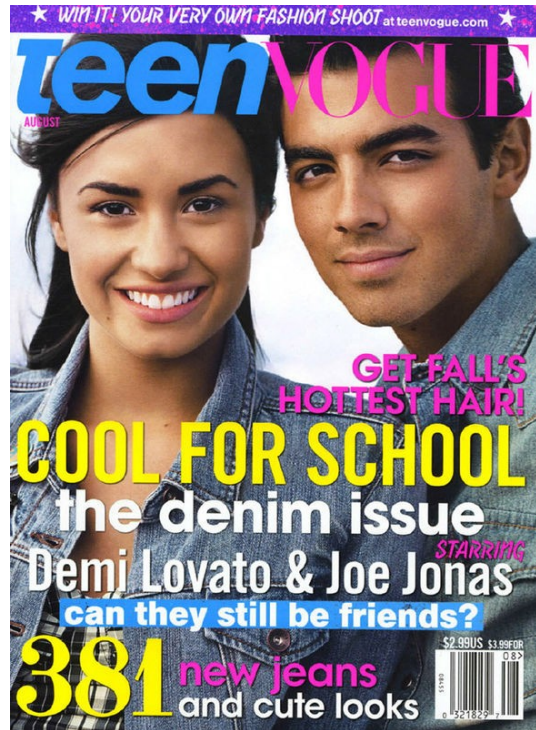
Art Department



Dennis Devoy

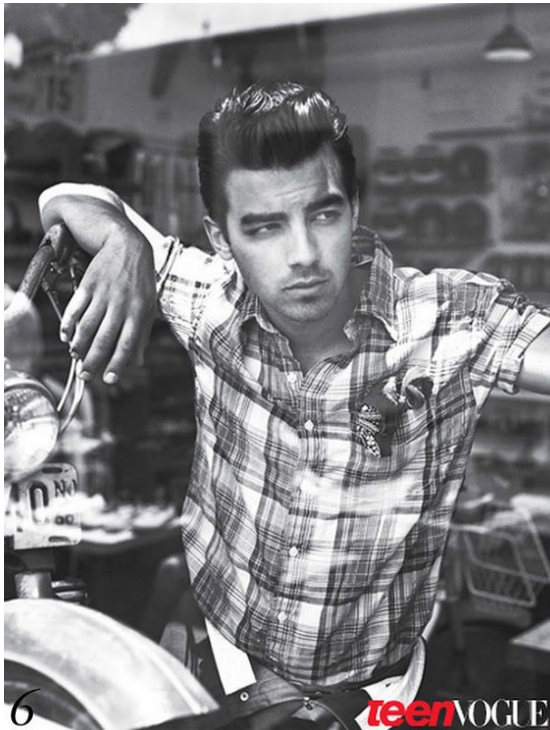
www.art-dept.com

Art Department



Dennis Devoy

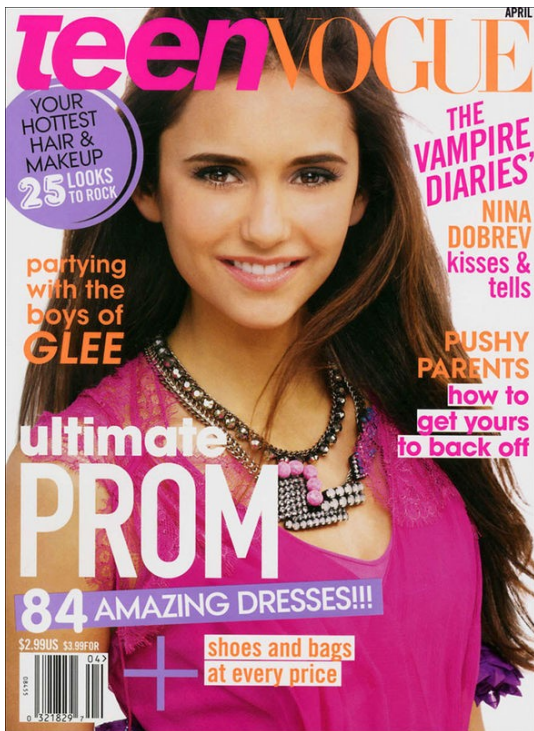
Art Department



Dennis Devoy

www.art-dept.com

Art Department



Dennis Devoy

Art Department



Dennis Devoy

www.art-dept.com