

Art Department



Christopher Ardoff

www.art-dept.com

Art Department



Christopher Ardoff

www.art-dept.com

Art Department



Christopher Ardoff

www.art-dept.com

Art Department



Christopher Ardoff

www.art-dept.com

Art Department



Christopher Ardoff

www.art-dept.com

Art Department



Christopher Ardoff

www.art-dept.com

Art Department



Christopher Ardoff

www.art-dept.com

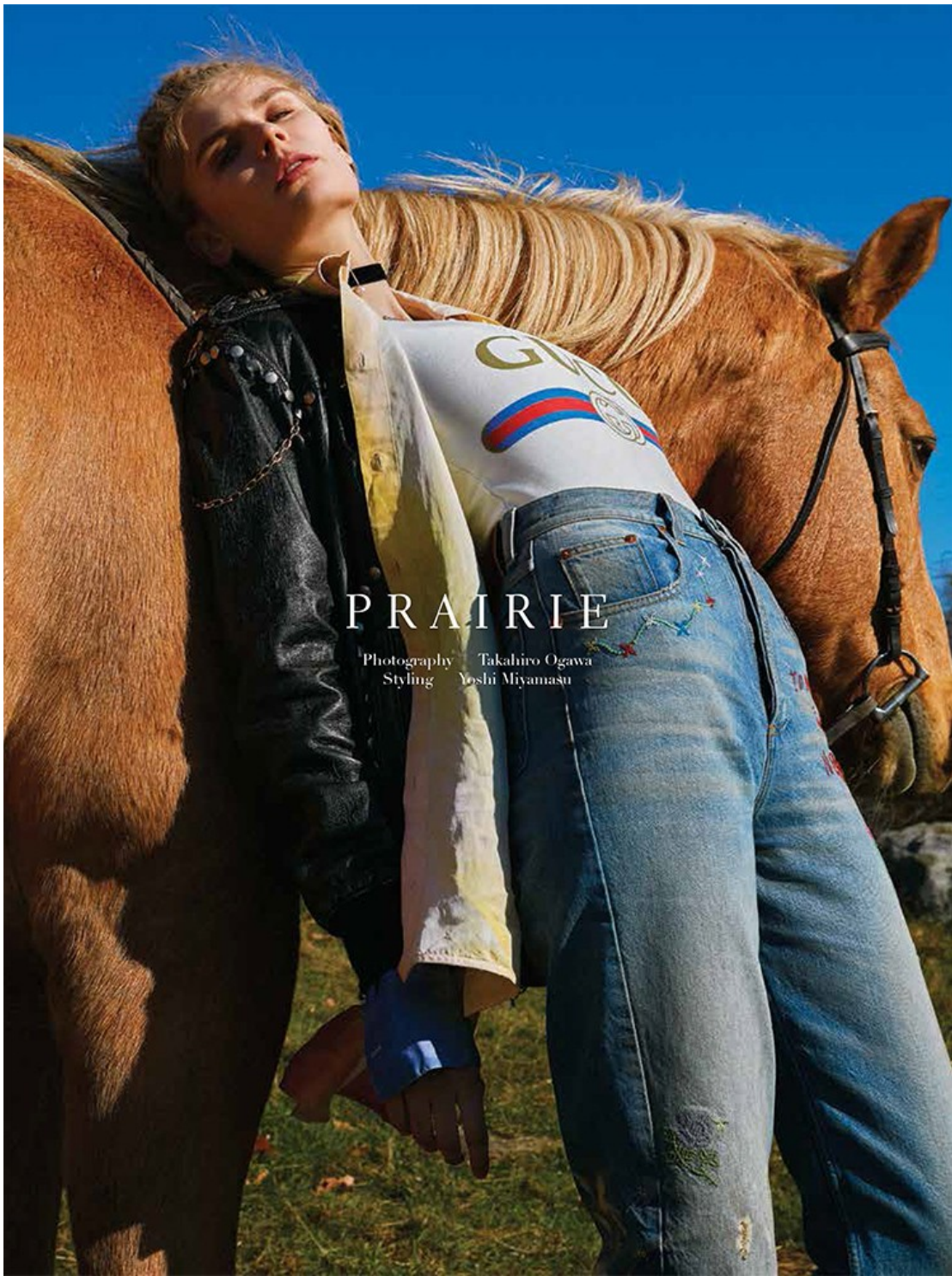
Art Department



Christopher Ardoff

www.art-dept.com

Art Department



Christopher Ardoff

www.art-dept.com

Art Department



Christopher Ardoff

www.art-dept.com

Art Department



Christopher Ardoff

www.art-dept.com

Art Department



Christopher Ardoff

www.art-dept.com

Art Department



All CHANEL:
CHANEL blouse,
\$5,300; CHANEL
fantasy glitter tweed
pant, \$3,500; CHANEL
straw hat, \$1,200;
CHANEL metal/strass
belt, \$1,750; CHANEL
bracelet, \$1,350;
CHANEL metal/
resin/glass/strass
bracelet, \$1,450;
CHANEL metal/strass
bracelet, \$2,850.
Select CHANEL
boutiques nationwide.
(800)550-0005

SUMMER 2019 GENLUX 57

Christopher Ardoff

www.art-dept.com

Art Department



AMUR 'Ali' bustier,
\$248; AMUR
'Wika' skirt, \$498;
Nordstrom,
The Grove,
323-930-2230
Iradj Maini gold
mesh snake
with emerald
bracelet, \$1485,
iradjmaini.com

50 GENLUX SUMMER 2019

Christopher Ardoff

www.art-dept.com

Art Department



Versace leather dress, \$3895, available at select Versace stores
1950s Gipsy for CHANEL turquoise poured glass + strasse necklace, \$3500, @pollysprints
Left ring: Irdj Maini turquoise drops, \$870;
Right Ring: Irdj Maini turquoise big ring, \$1625;
Irdj Maini, Turquoise earring, \$1625, irdjmaini.com

57 GENLUX SUMMER 2019

Christopher Ardoff

www.art-dept.com

Art Department



Christopher Ardoff

www.art-dept.com

Art Department



Christopher Ardoff

www.art-dept.com

Art Department



Christopher Ardoff

www.art-dept.com

Art Department



Christopher Ardoff

www.art-dept.com

Art Department



396 InSTYLE SEPTEMBER 2017

Jacquemus coat.
Albertus
Swanepoel hat.
Loro Piana scarf.
The Row boots.

Christopher Ardoff

www.art-dept.com

Art Department



Prada dress.
Albertus
Swanepoel hat.
Loro Piana scarf.
BEAUTY BEAT
A gel moisturizer
layers seamlessly
under makeup. Try
Borghese Crema
Ristorativo-24 (\$75;
borghese.com).

Christopher Ardoff

www.art-dept.com

Art Department



Christopher Ardoff

www.art-dept.com

Art Department



Alexander
McQueen dress,
earring, belt, and
boots. Capas hat
from JJ Hat Center.

Christopher Ardoff

www.art-dept.com

Art Department



Christopher Ardoff

www.art-dept.com

Art Department



Christopher Ardoff

www.art-dept.com

Art Department



Christopher Ardoff

www.art-dept.com

Art Department



Christopher Ardoff

www.art-dept.com

Art Department



Christopher Ardoff

www.art-dept.com

Art Department



Christopher Ardoff

www.art-dept.com

Art Department



PHOTOGRAPHER SAMANTHA RAPP STYLIST MINDY SAAD STYLIST ASSISTANT AJAI JOHNSON, MELISSA MITCHELL MAKE-UP ARTIST
CHRISTOPHER ARDOFF HAIR STYLIST CARMEL BIANCO FOR ORIBE HAIR @RAYBROWNPRO.COM MODEL MARIA DEBICKA @WILHELMINA
MODELS SET DESIGNER STOCKTON HALL © ATELIER MGMT RETOUCHING AND POST PRODUCTION THE APARTMENT STUDIOS

Christopher Ardoff

www.art-dept.com

Art Department



Christopher Ardoff

www.art-dept.com

Art Department



Christopher Ardoff

www.art-dept.com

Art Department



Christopher Ardoff

www.art-dept.com

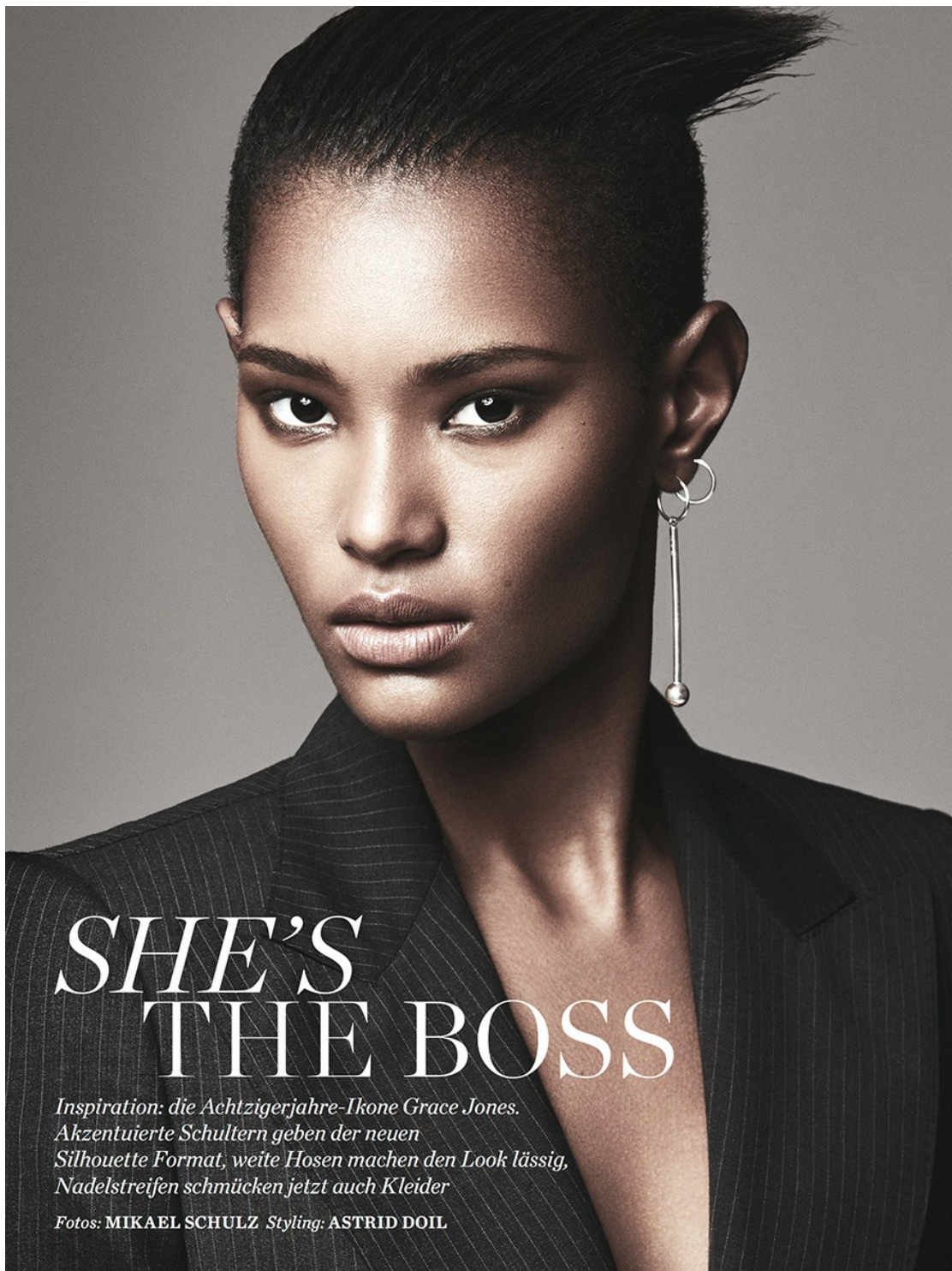
Art Department



Christopher Ardoff

www.art-dept.com

Art Department



SHE'S THE BOSS

*Inspiration: die Achtzigerjahre-Ikone Grace Jones.
Akzentuierte Schultern geben der neuen
Silhouette Format, weite Hosen machen den Look lässig,
Nadelstreifen schmücken jetzt auch Kleider*

Fotos: MIKAEL SCHULZ Styling: ASTRID DOIL

Christopher Ardoff

www.art-dept.com

Art Department



Christopher Ardoff

www.art-dept.com

Art Department



Christopher Ardoff

www.art-dept.com

Art Department



Christopher Ardoff

www.art-dept.com

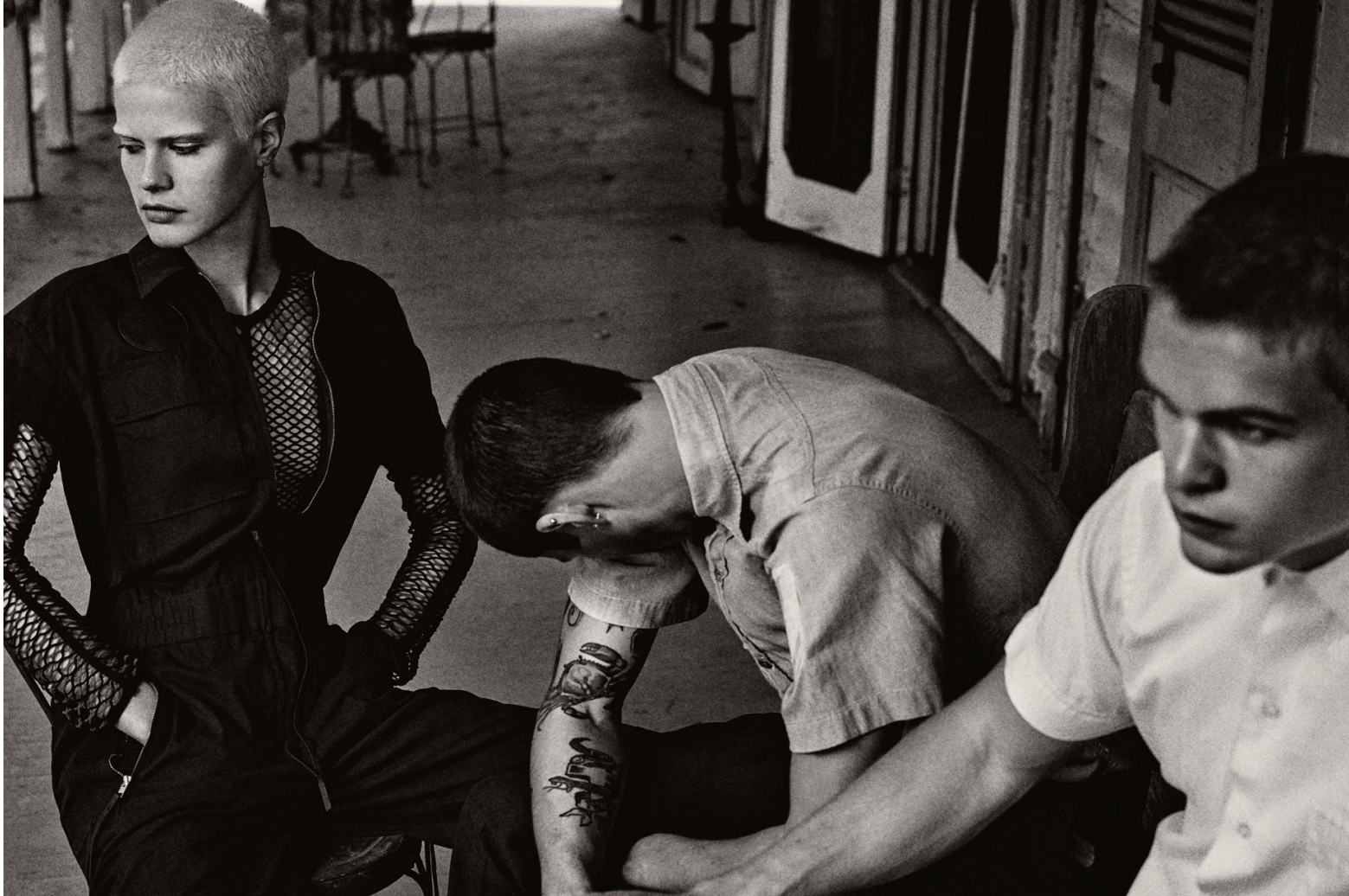
Art Department



Christopher Ardoff

www.art-dept.com

Art Department



Christopher Ardoff

www.art-dept.com

Art Department



Christopher Ardoff

www.art-dept.com

Art Department



Christopher Ardoff

www.art-dept.com

Art Department



Christopher Ardoff

www.art-dept.com

Art Department



Christopher Ardoff

www.art-dept.com

Art Department



Christopher Ardoff

www.art-dept.com

Art Department



Christopher Ardoff

www.art-dept.com

Art Department



Christopher Ardoff

www.art-dept.com

Art Department



CẨM HÙNG HAUTE COUTURE

PHẦN TRỘN VỚI PHONG CÁCH THANH THỊ

ELLE D E P A R T M E N T

BEST OF CRUISE 2017

*Những chi tiết, phom dáng
kính điển trở nên mới lạ
hơn qua sự sáng tạo trong
cách phối đồ và phong thái
tự tin của người mặc*

Bài PHƯƠNG ANH - Hình ảnh KINYA
- Stylist RACHEL GILMAN - Người
màu ALICE FIRST @IMG - Trang điểm
CHRISTOPHER ARDOFF @ART
DEPARTMENT - Làm móng RIE YOKOI
- Làm tóc YOSHIKI KIRINO

Đầm LOUIS VUITTON
Hoa tai STUDIOSOPHIA
Vòng tay CHANEL
Nhẫn CLOSER BY WWAKE RING

Christopher Ardoff

www.art-dept.com

Art Department



Christopher Ardoff

www.art-dept.com

Art Department



Christopher Ardoff

www.art-dept.com

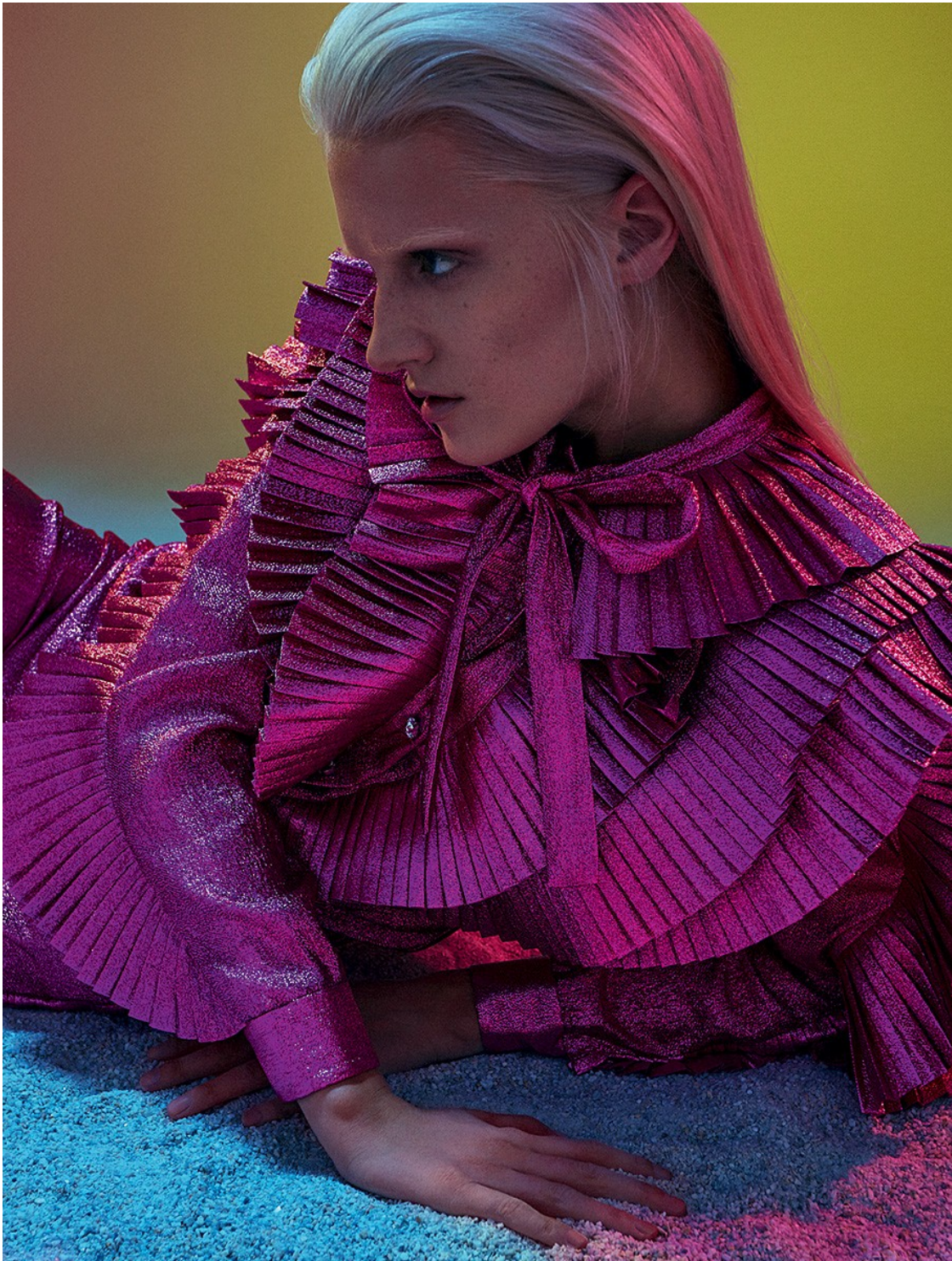
Art Department



Christopher Ardoff

www.art-dept.com

Art Department



Christopher Ardoff

www.art-dept.com

Art Department



Christopher Ardoff

www.art-dept.com

Art Department



Christopher Ardoff

www.art-dept.com

Art Department



Christopher Ardoff

www.art-dept.com

Art Department



Christopher Ardoff

www.art-dept.com

Art Department



Christopher Ardoff

www.art-dept.com

Art Department



Christopher Ardoff

www.art-dept.com

Art Department



Christopher Ardoff

www.art-dept.com

Art Department



Pamela Bernier
皮裙 Lanvin
白金钻石耳钉、项链及戒指 Chanel Haute Joaillerie

Kyle Mobus
反穿大衣 Barbara Bul
羊毛长裤 Phillip Lim
金属粗圈镜 Le Spec
鲨鱼牙形项链 Fenton
字母项链 Louis Vuitton
黑色皮靴 Alexander McQueen

Wild at Heart



璀璨光芒在血脉
中跳动，如同暗夜荆棘怒放在灵魂深处。

摄影 Kai Z. Feng 造型 Brylie Fowler 妆发 Pamela Bernier (The Society Management)
男模 Kyle Mobus (Request Models) 发型 Shlomi Mor (Aesthetics Management 使用St.Motte护发)
化妆 Christopher Ardoff (Art Department, 使用 Chanel) 美甲 Roseann Singleton (Art Department,
使用 Chanel) 统筹 蔡坤耀 Joan Cai 制片人 Sarah Saleh @ KAI Z FENG LLC 拍摄设计 Shun/Kato-Samuel
摄影助理 Isaac Bearman - Emilio Garcia Hernandez 服装助理 Ethan Shropshire - Patrick Ames Conner
模特统筹 Jorge Morales @ Worldwide Casting & Production

Christopher Ardoff

www.art-dept.com

Art Department



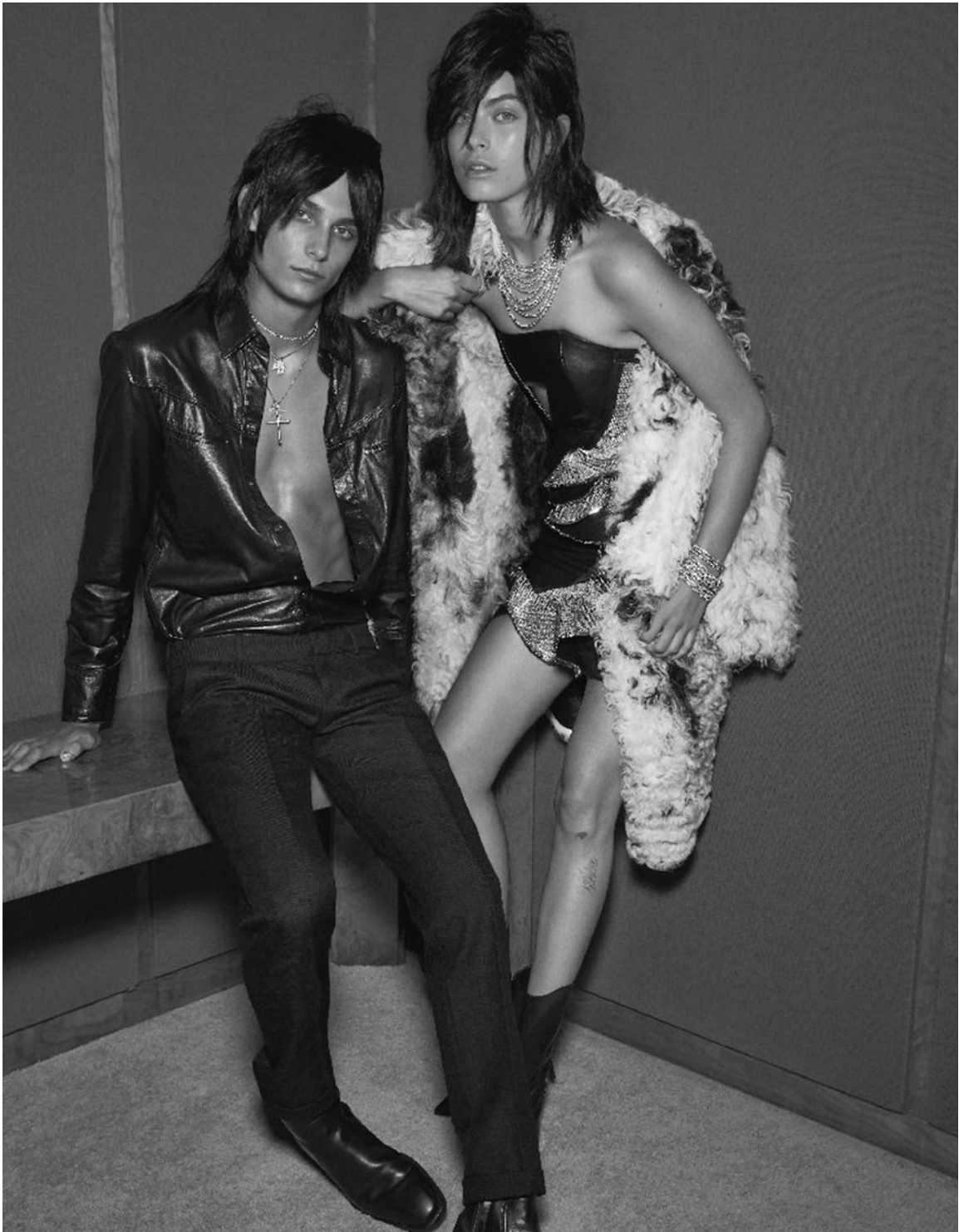
Pamela Bernier
丝质内衬衣 Kild de Montipernasso
皮裤、装饰及过膝靴 Moschino
玫瑰金钻石耳饰、项链、戒指及手环 Van Cleef&Arpels

Kyle Mobus
跨状皮背心 Martin Keehn
羊毛长裤 Louis Vuitton
白色皮鞋 Phillip Lim
玫瑰金装饰、手环 Aurélie Bidermann
金色长链 Fenton
金色手环 Unhinged

Christopher Ardoff

www.art-dept.com

Art Department



Christopher Ardoff

www.art-dept.com

Art Department



左
Pamela Bernier
皮夹克、皮裙 Tom Ford
皮革大衣 Roberto Cavalli
及脚皮靴 Pierre Hardy
玫瑰金钻石珥珥 Cartier

右
Pamela Bernier
机车皮夹克 Barbara Bul
喇叭迷你裙 DSquared²
系带皮中靴 Pierre Hardy
玫瑰金钻石珥珥 Cartier

Kyle Mobus
皮夹克 Alexander Wang
长款毛呢西装、那薄皮靴 Alexander McQueen
黑色长袜 Phillip Lim
玫瑰金钻石珥珥、玫瑰金钻石珥珥 Cartier

Christopher Ardoff

www.art-dept.com

Art Department



Christopher Ardoff

www.art-dept.com

Art Department



Christopher Ardoff

www.art-dept.com

Art Department



Christopher Ardoff

www.art-dept.com

Art Department



MANTELLA
IN LANA
REVERSIBILE
CON INTERNO
IN FANTASIA
PIED DE POULE
(HERNO) SU
MAGLIA IN
LANA EFFETTO
SPALMATO
E GONNA
COORDINATA
(TUTTO JE
SANDER)

Christopher Ardoff

www.art-dept.com

Art Department



TIME
AFTER
TIME

春はカジュアルシックに。
最新ウォッチ着こなし術

コードやジャケット、Tシャツなど、
デイリーに欠かせない定番アイテムを使つての、
最新ウォッチ着こなし術。
スタイリッシュなウォッチがリードする
カジュアルシックな装いを、ぜひマスターして!

Photographs by Tom Schirmacher

Christopher Ardoff

www.art-dept.com

Art Department



Christopher Ardoff

www.art-dept.com

Art Department



Christopher Ardoff

www.art-dept.com

Art Department



Christopher Ardoff

www.art-dept.com

Art Department



Christopher Ardoff

www.art-dept.com

Art Department



Christopher Ardoff

www.art-dept.com

Art Department



Christopher Ardoff

www.art-dept.com

Art Department



Пальто из меха лисы, PREEN.
Блузка, FANTO PUGLES. Брюки
из шерсти, VALENTINO. Чокер
из кожи и металлические
манжеты, MOSCHINO.

Фотограф: Kai Z Feng.
Креативный директор: Sam
Sohail © DMA United. Стилист:
Brylle Fowler. Модель: Zuzanna
Wjoch © Next. Ассистент арт-
директора: Rob Mostromsky ©
DMA United. Парикмахер: Roberto
Di Cuiа для Oribe © Atelier NYC.
Макияж: Christopher Ardoff
для Chanel © Art Department.
Манекен: Roseann Singleton
для Warren Tricomi © The Plaza
in NYC. Главный продюсер:
Diana Masiello © DMA
United. Ассистент стилиста:
Ethan Sheppshire. Кастинг:
Jorge Morales © Worldwide.
Кастинг и режиссер: Lou
Alago © Marek & Associates.
Продюсеры: Sarah Saleh
© KAIZFENG LLC,
Vanessa Ly.

Christopher Ardoff

www.art-dept.com

Art Department



Christopher Ardoff

www.art-dept.com

Art Department



Christopher Ardoff

www.art-dept.com

Art Department



Christopher Ardoff

www.art-dept.com

Art Department



Christopher Ardoff

www.art-dept.com

Art Department



Veste plissée
destructurée
Short noir,
ISSEY MIYAKE

RIE @ SILENT

Christopher Ardoff

www.art-dept.com

Art Department



Robe-bustier en tulle blanc,
Boxer et culotte,
Bracelet,
Ras-de-cou,
DIOR

MAEVE @ MC2

Thierry Le Gouas

Christopher Ardoff

www.art-dept.com

Art Department



Christopher Ardoff

www.art-dept.com

Art Department



Christopher Ardoff

www.art-dept.com

Art Department



FARE IL PUNTO.
CON UNA SCIARPINA
SOTTILE A BOLLI
BIANCHI E NERI
Per lei, paltò di lana
finestrato tagliato
al vivo, Gucci, blazer
asimmetrico, Semicouture
(250 euro), pantaloni
a palazzo di lana,
Anna Rachele Jeans
(180 euro), sciarpa di lana
a bolli Mare Jacobs.
Per lui, completo di lana
in tweed, Emporio
Armani, sciarpina
tricottata Bottega Veneta,
sneakers Gucci.

Christopher Ardoff

www.art-dept.com

Art Department



STILE IPERBOLICO.
CABAN EXTRA BIG
DAI BAGLIORI LUNARI,
PER UN LOOK
DI NUOVA
CONCEZIONE
Maxi coat di lana
pied-de-poule con
maniche a raglan
e motivi a bolli
di lurex, Dolce
& Gabbana; pull di lana,
Stella McCartney,
pantaloni gessati,
Loewe, sciarpina
Marc Jacobs.

Christopher Ardoff

www.art-dept.com

Art Department



TRENCH CARAMEL.
SOVRADIMENSIONATO,
CONCETTUALE
QUANTO BASTA
Maxi cappotto di lana
con maniche a raglan
e tasconi, H&M Studio
(199 euro), lungo
cardigan di lana, Manila
Grace (240 euro),
pantaloni di flanella
a righe, Alysi (205 euro);
al collo, cintura di seta
Bottega Veneta.

ALEXEI MAY

Christopher Ardoff

www.art-dept.com

Art Department



FERRI DEL MESTIERE.
TRICOTTATO "FATTO
IN CASA" PER LE
SCIARPONE
ANTIFREDDO. DA
PORTARE IN COPPIA
Per lei, lungo paltò
di lana a quadri,
Isabel Marant (1.200
euro), miniabito di lana
tricot (499 euro)
su pantaloni in panno
di lana Principe
di Galles (998 euro),
tutto Les Copains,
come la sciarpa di lana
a trecce (299 euro);
sciarpona di lana
mélange Missoni (1.960
euro). Per lui, micro pull
stile college su camicia
di cotone a righe e
pantaloni a sigaretta,
tutto Raf Simons;
calze e sneakers Gucci.

261 NOVEMBRE 2016

Christopher Ardoff

www.art-dept.com

Art Department



STYLE *Moda*

AFTER

Una notte di festa che finisce all'alba. Addosso, ancora l'abito da sera: in chiffon, ricoperto di paillettes, tutto lamé. Via i tacchi, un paio d'anfibi. E sulle spalle, un chiodo o un caban

PARTY

FOTO LUCA BABINI • SERVIZIO YE YOUNG KIM

Caban doppiopetto
in panno di lana,
Bleuer (€ 475).
Abito con corpetto
in raso e gonna
decorata con fiocchi
in seta e perline.
Hugo Boss Black
(€ 3.400).
Anfibi: Only for
Radical Lovers.

280 | VANITY FAIR | 08.12.2010

Christopher Ardoff

www.art-dept.com

Art Department



In queste pagine:
cappotto-marsina
in lana con inserti
in raso e balza
in chiffon sul bordo,
High (€ 1.100).
Longdress in chiffon
multistrato, Richmond
(€ 323). Copricapo,
Heather Huey.
Collier, Screaming
Mimi's New York.
Bracciale, De Liguoro.

Christopher Ardoff

www.art-dept.com

Art Department



Christopher Ardoff

www.art-dept.com

Art Department

Whatever takes your fancy

In a fairytale season of richly evocative dressing, living doll Karlie Kloss brings a sophisticated attitude to spring's exquisite dress-up box. Photographed by Kai Z Feng.



Alexander McQueen
silk chiffon dress,
made to order,
silk chiffon lace
undershirt, \$1,000,
and rose gold hard
adornment, made
to order. All prices
approximate; fashion
details last pages.
Fashion editor
Naomi Simz

Christopher Ardoff

www.art-dept.com

Art Department



Christopher Ardoff

www.art-dept.com

Art Department



Christopher Ardoff

www.art-dept.com

Art Department



Marc Jacobs

フロントのハートモチーフは
大人の女心をくすぐる可愛さ。

チュニック ¥136,500 / Marc Jacobs (マルック)
高級のバングル / スタイリスト私物

053 Numéro TOKYO

Christopher Ardoff

www.art-dept.com

Art Department



Christopher Ardoff

www.art-dept.com

Art Department



Christopher Ardoff

www.art-dept.com

Art Department

RUTILANTÍSIMA

Bufanda de seda usada en la cabeza, de Burberry London; pulseras de lucita y pulseras con remaches, todo de Burberry; pulseras de esmalte bicolor, ambos de Kenneth Jay Lane. En esta reportaje: peinado, Rodney Groves/Kérastase para Vartali Salon; maquillaje, Christopher Ardoff/A.A.C PRO, ambos para Art Department; manicura, Jenna Hipp/Esie para Tracey Mattingly; asistente, Annie Campbell; producción, Wes Olsen para SStarProductions. como diseño en set, Taylor Lorentz para TaylorLorentz.com; modelo, Irina Shayk.



DIVA ECLÉCTICA

Los vuelos, los internos plisados, los apliques y los lazos sutiles de este diseño barroco unen diversas épocas en una estética ecléctica, que celebra la intensidad intemporal de las texturas. Minivestido de seda y encaje trenzado en el camesú, corbata y trench de seda plisada con pliegues y encajes aplicados a mano, todo de Burberry.



Christopher Ardoff

www.art-dept.com

Art Department



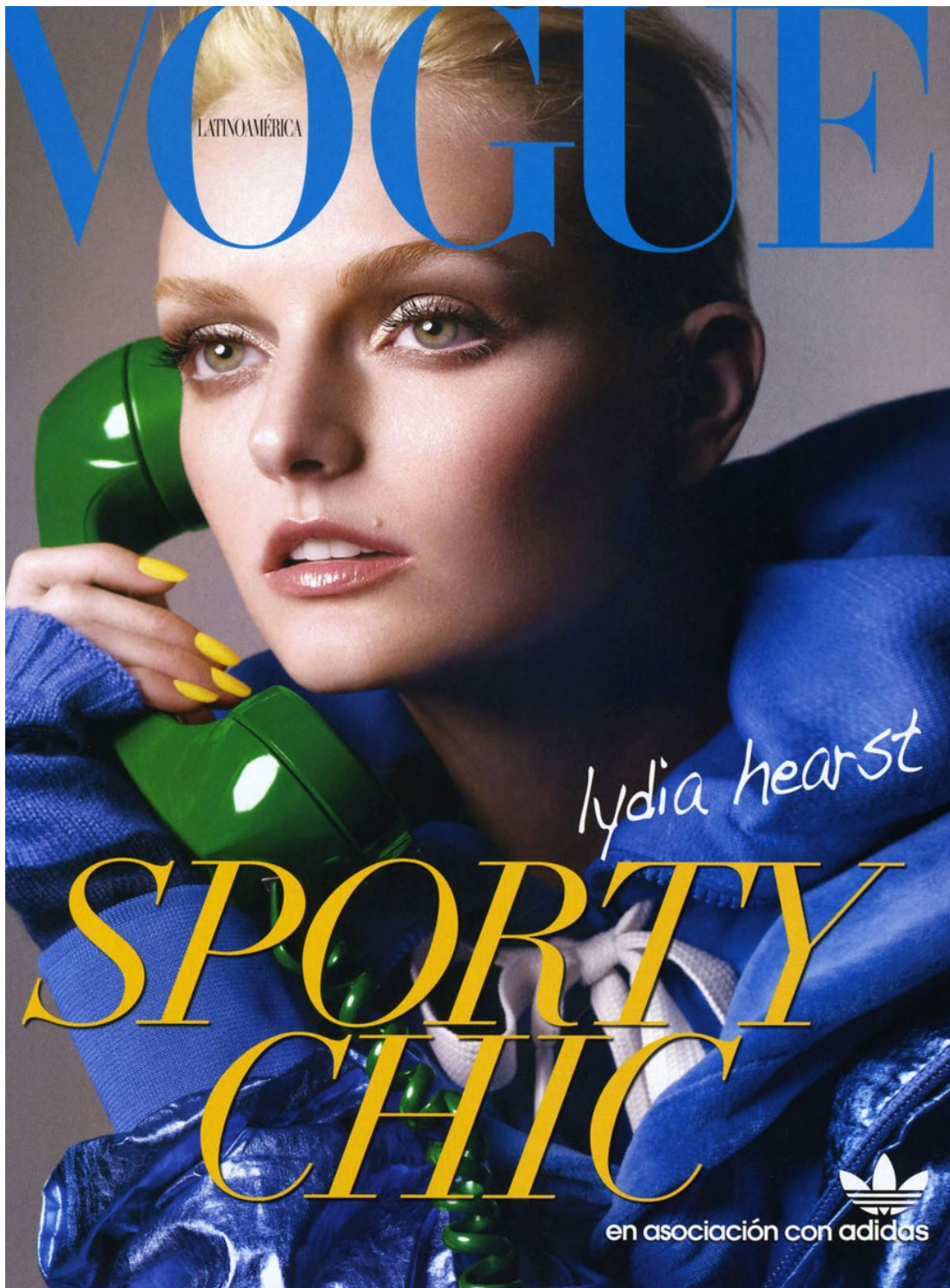
A GLAM LADY
Drapeados, nudos y
vueltos irregulares son
la tríada de triunfo
para llevar a tu paso
esos aires atemporales
de la más sofisticada
elegancia... Suéter
de lana merino con
bandas entrelazadas
y minifalda de seda
fruncida, ambos de
Burberry; brazalete
McStay, de Aldo.
PAGINA OCEANA: trench
de seda duquesa con
detalle epaulette en los
hombros, de Burberry.

DIVA ECLÉCTICA
Los vueltos, los intensos
pleados, los apliques y
los lazos sutiles de este
diseño barroco unen
diversas épocas en una
estética ecléctica, que
celebra la intensidad
intemporal de las
texturas. Minivestido de
seda y encaje trenzado
en el canesú, corbata y
trench de seda plisada
con pliegues y encajes
aplicados a mano,
todo de Burberry.

Christopher Ardoiff

www.art-dept.com

Art Department



Christopher Ardoff

www.art-dept.com

Art Department



A RITMO DE ROCK

Cantantes célebres como Katy Perry, Estelle, Young Jeezy y Missy Elliot, se unen a deportistas de la talla de David Beckham y Kevin Garnett, como parte de la nueva campaña donde se celebra **LA DIVERSIÓN EN TODA SU EXPRESIÓN**. Ya no tienes que esconder tu lado más deportivo. Chaqueta icónica *Hooded Flock*, de adidas Originals.

Christopher Ardoff

www.art-dept.com

Art Department



Christopher Ardoff

www.art-dept.com

Art Department



Christopher Ardoff

www.art-dept.com

Art Department



Anna Jagodzinska
アナ・ヤゴジンスカ

ポーランド生まれ、20歳。

16歳の頃に事務所と契約し、同じ年、ミラノ秋冬コレクション、Pringle of Scotlandのショウでデビュー。仕事に専念するためニューヨークに移り、コレクションにも続けて出演。DKNY、BCBG Max Azria、Moschino Cheap & Chic、Moschino "Funny" の香水などの広告キャンペーンの顔になる。学校に戻るため一時休業していたが、2008年秋をコレクションで復活。

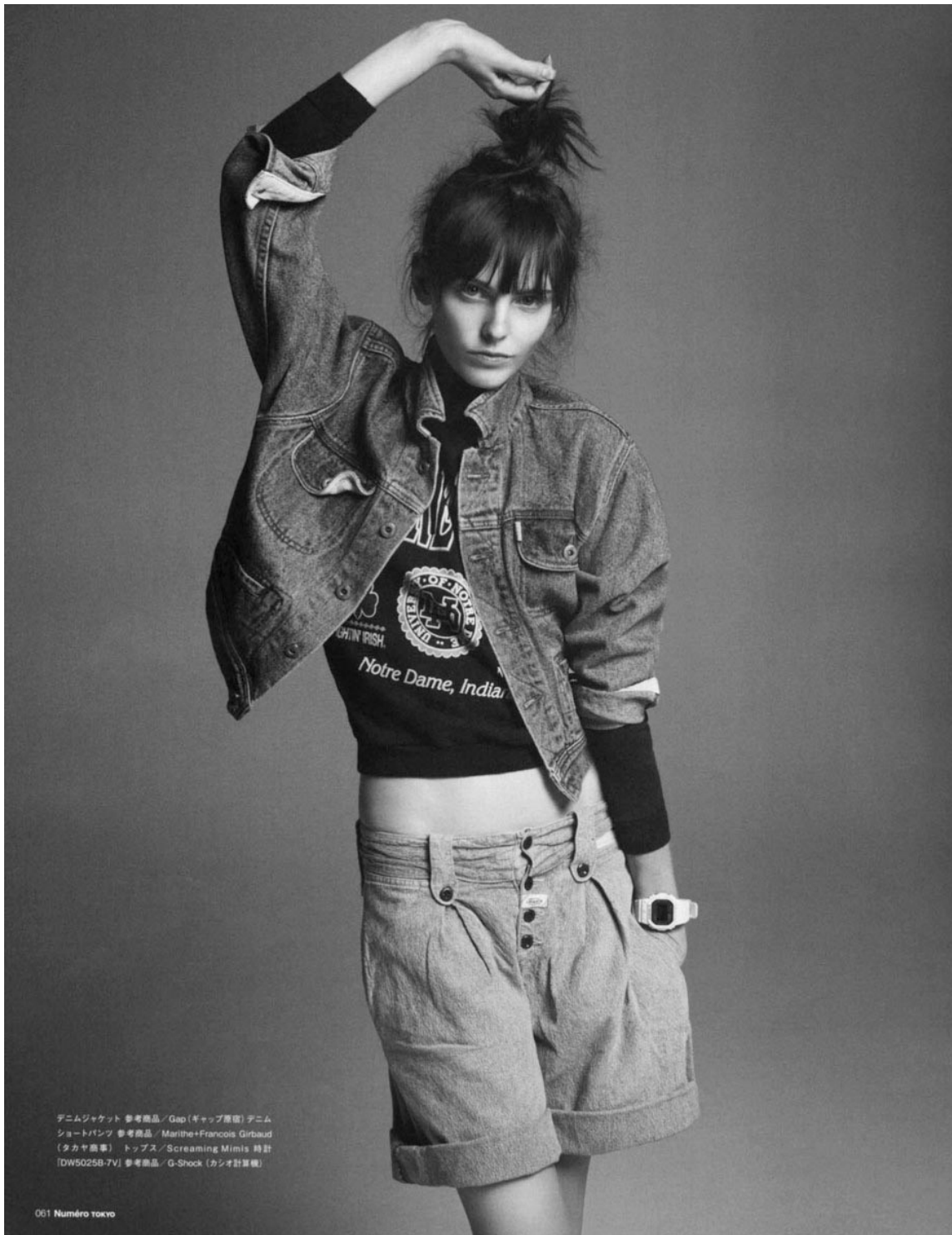
デニムのベスト 参考商品 / We Are Replay (リプレイ プレスルーム) 中に着たホーダーのタンクトップ 参考商品 / Gap (ギャップ原産) ストライプのシャツ 参考商品 / レギンス ¥10,395 / ともにPolo Ralph Lauren (ポロ ラルフ ローレン ジャパン) 花柄のドレス アクセサリー / オペテ Screaming Minis

Numero Tokyo 056

Christopher Ardoff

www.art-dept.com

Art Department



Christopher Ardoff

www.art-dept.com

Art Department



ジャケット ¥331,800 / Louis Vuitton (A-イ・グエ
トシ カスタマーサービスセンター) / Tシャツ / Noki
フード付きのトップス / House of Holland / イヤリ
ング / Disney Couture / ネックレス / Gaston

Fashion editor : Sally Lyndley
Fashion assistant : Ian Brantley
Makeup : Christopher Ardoff at Art Department
Makeup : Fernando Torment at L'Atelier (p.54.62-65)
Hair : Bok Hee at Streeters
Hair : Francelle at The Wall Group (p.54.62-65)
Special thanks to Next Models

067 Numéro TOKYO

Christopher Ardoff

www.art-dept.com

Art Department



Christopher Ardoff

www.art-dept.com

Art Department



**DANCE
TRAIN
& HEAL
INTO THE
WATER**

**AQUATIC
SPORTS
BODY/
MIND**

TEXT BY LUCIA CORNA
PHOTOS BY GREG LOTUS

Dal nuoto sincronizzato al watsu. L'acqua è la palestra ideale. Perché è l'elemento prenatale dove si ristabilisce l'armonia tra il corpo e la mente.

**CALZEDONI A BIKINI DI TESSUTO TECNICO
effetto lurex con reggiseno drappeggiato.**

Christopher Ardoff

www.art-dept.com

Art Department



Christopher Ardoff

www.art-dept.com

Art Department



Christopher Ardoff

www.art-dept.com

Art Department



Christopher Ardoff

www.art-dept.com

Art Department



Christopher Ardoff

www.art-dept.com

Art Department



Christopher Ardoff

www.art-dept.com