

Art Department



Christopher Ardoff

www.art-dept.com

Art Department



Christopher Ardoff

www.art-dept.com

Art Department



Christopher Ardoff

www.art-dept.com

Art Department



Christopher Ardoff

Art Department



Christopher Ardoff

Art Department



Christopher Ardoff

www.art-dept.com

Art Department



Christopher Ardoff

www.art-dept.com

Art Department



Christopher Ardoff

www.art-dept.com

Art Department



Christopher Ardoff

www.art-dept.com

Art Department



Christopher Ardoff

www.art-dept.com

Art Department



Christopher Ardoff

www.art-dept.com

Art Department



Christopher Ardoff

www.art-dept.com

Art Department



Christopher Ardoff

www.art-dept.com

Art Department



Christopher Ardoff

www.art-dept.com

Art Department



Christopher Ardoff

www.art-dept.com

Art Department



Christopher Ardoff

www.art-dept.com

Art Department



Christopher Ardoff

www.art-dept.com

Art Department



Christopher Ardoff

www.art-dept.com

Art Department



Christopher Ardoff

www.art-dept.com

Art Department



Christopher Ardoff

www.art-dept.com

Art Department



Christopher Ardoff

www.art-dept.com

Art Department



Christopher Ardoff

www.art-dept.com

Art Department



Christopher Ardoff

www.art-dept.com

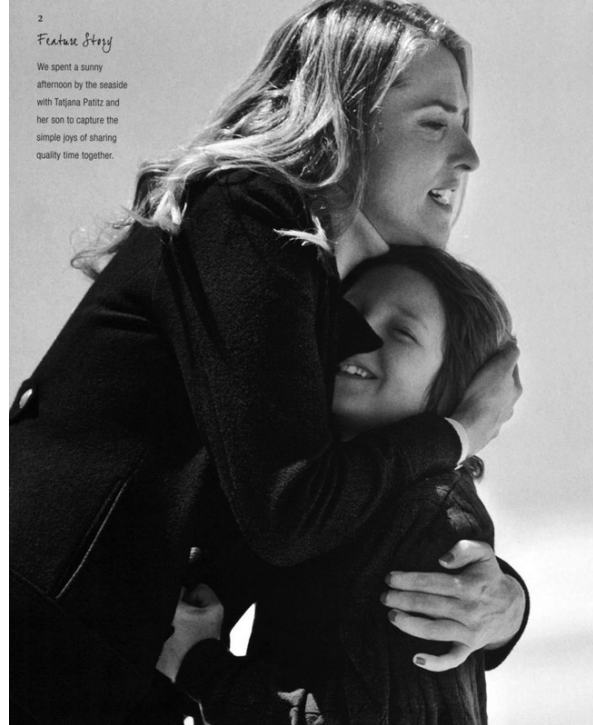
Art Department



Christopher Ardoff

www.art-dept.com

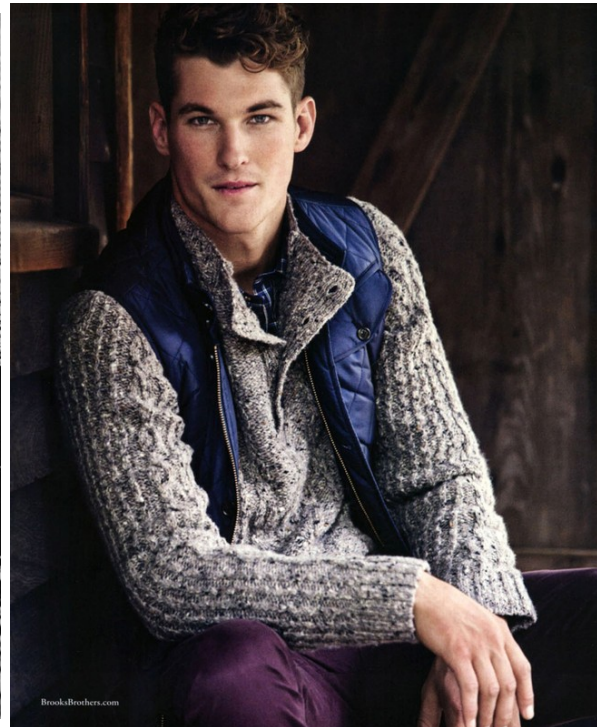
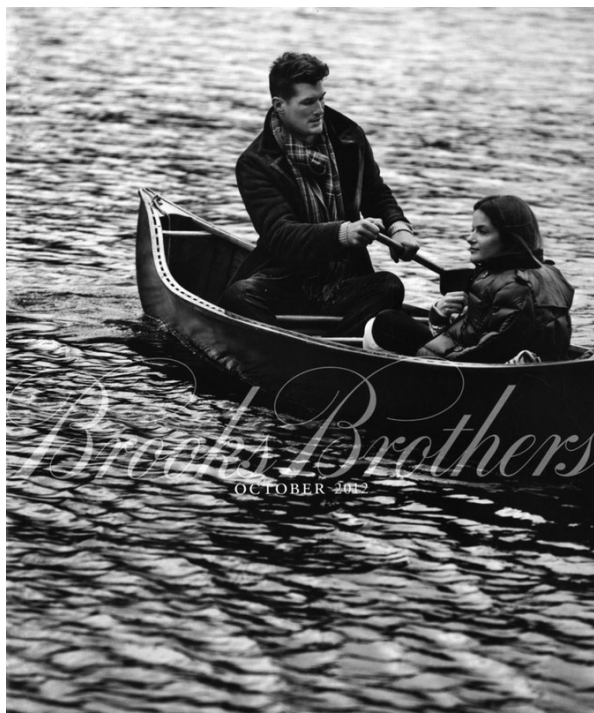
Art Department



Christopher Ardoff

www.art-dept.com

Art Department



Christopher Ardoff

www.art-dept.com

Art Department



8

A Rustic Retreat

When the highways turn into country roads and the boughs of trees make a canopy of multi-colored leaves, you've arrived at the countryside havens that make Autumn such a special time of the year.

BrooksBrothers.com

800.271.1815

Christopher Ardoff

www.art-dept.com

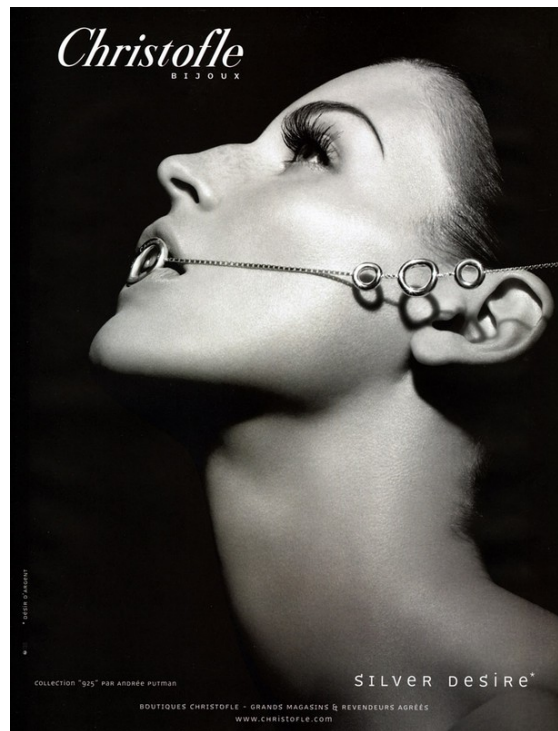
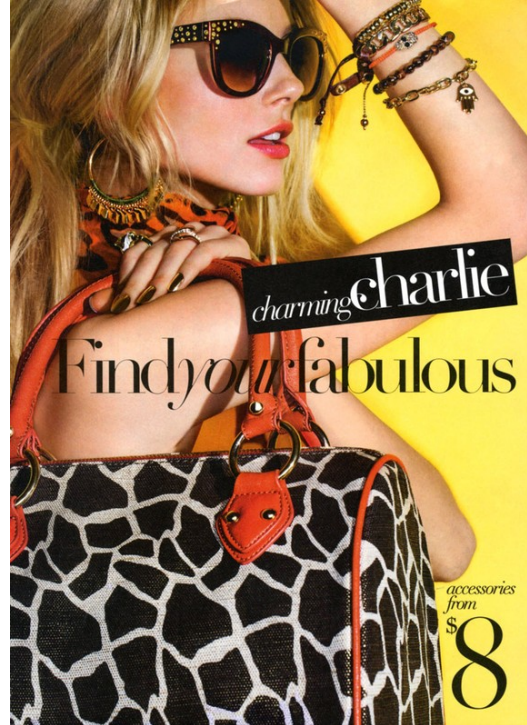
Art Department



Christopher Ardoff

www.art-dept.com

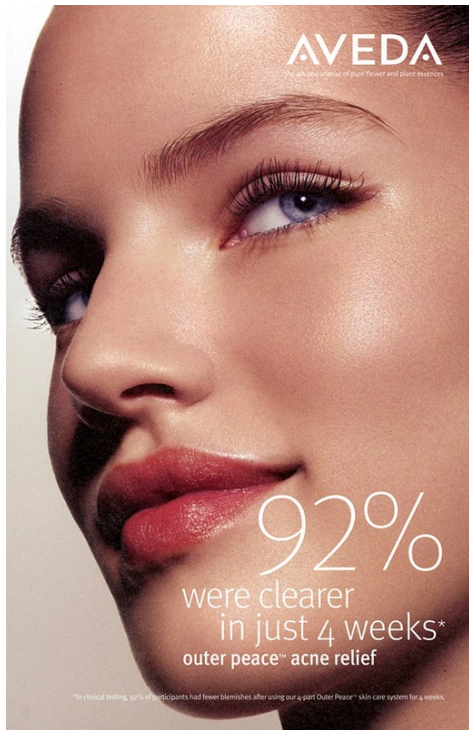
Art Department



Christopher Ardoff

www.art-dept.com

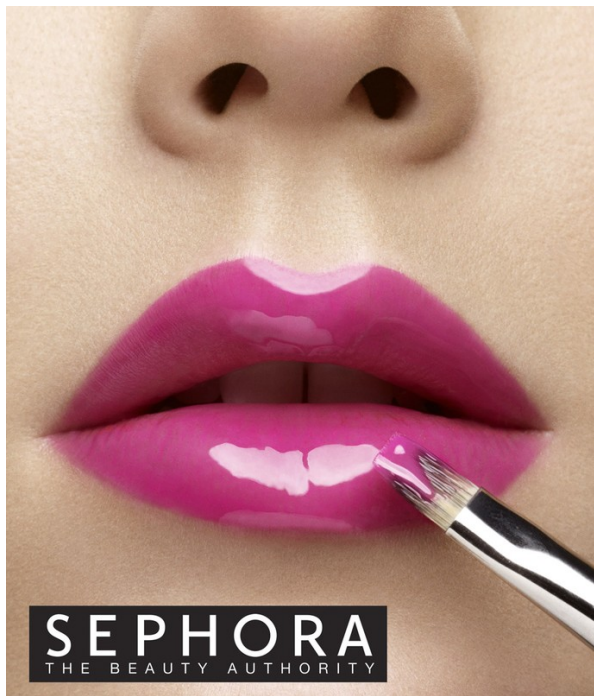
Art Department



Christopher Ardoff

www.art-dept.com

Art Department



Christopher Ardoff

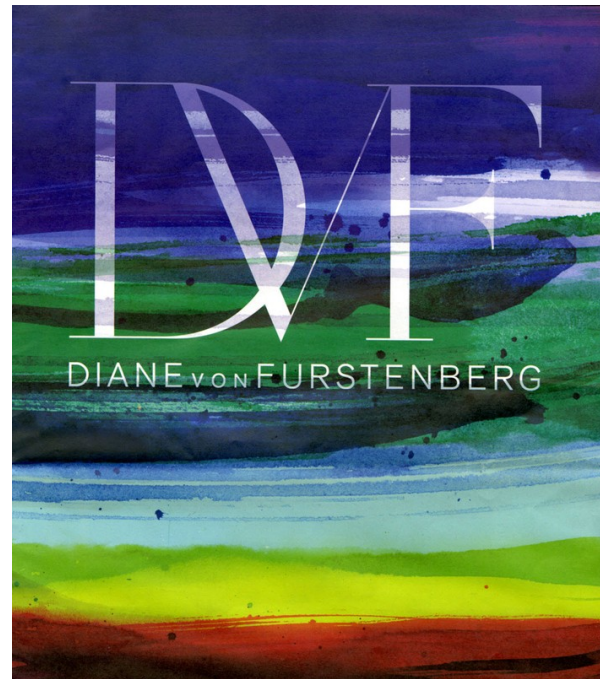
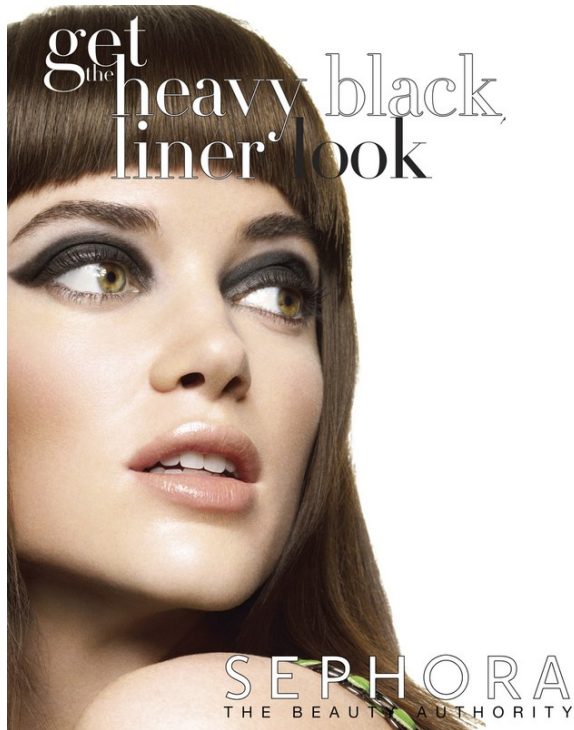
www.art-dept.com

Art Department



Christopher Ardoff

Art Department



Christopher Ardoff

www.art-dept.com

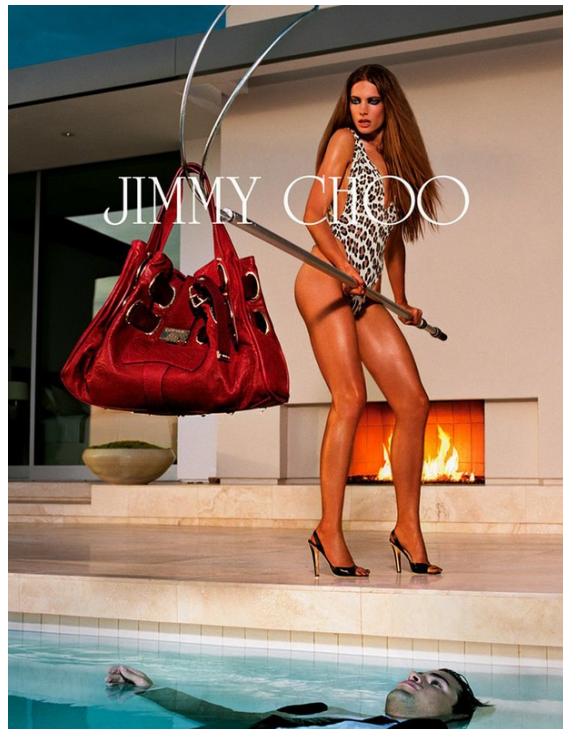
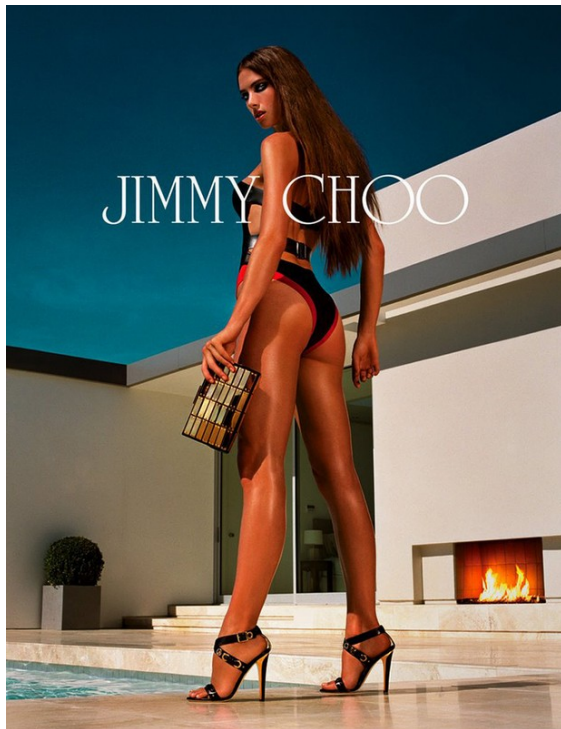
Art Department



Christopher Ardoff

www.art-dept.com

Art Department



Christopher Ardoff

Art Department



Christopher Ardoff

Art Department



Christopher Ardoff

www.art-dept.com

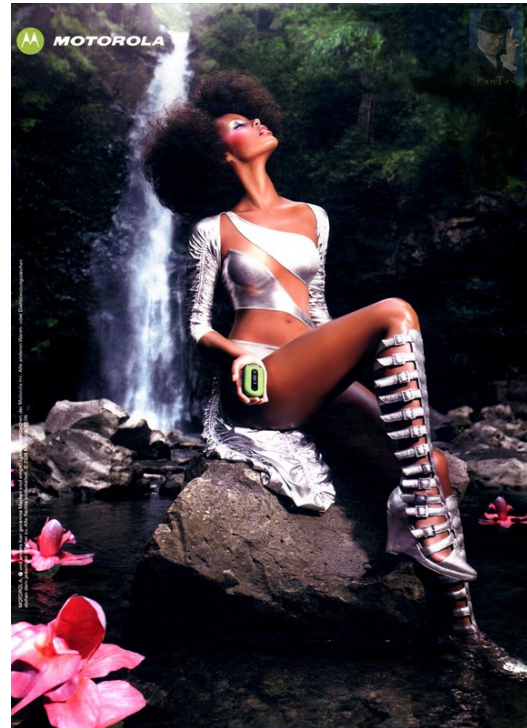
Art Department



Christopher Ardoff

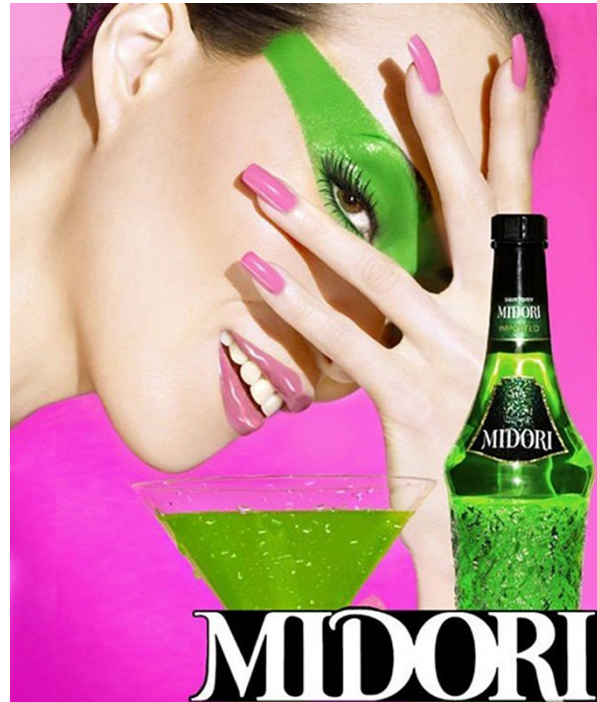
www.art-dept.com

Art Department



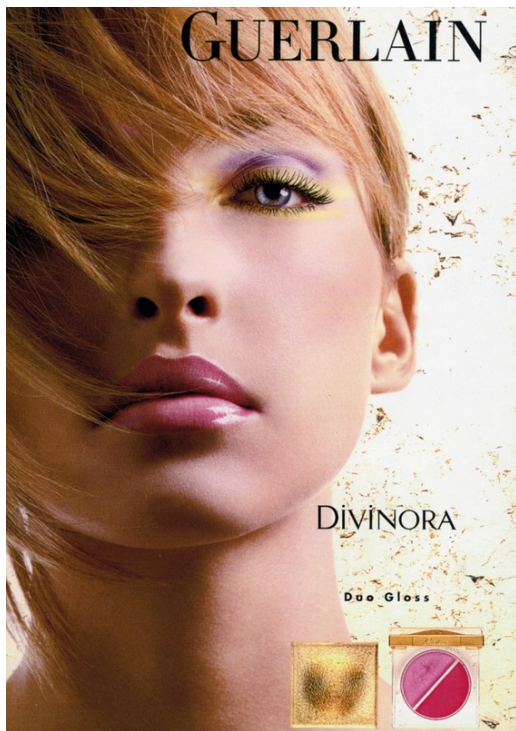
Christopher Ardoff

Art Department



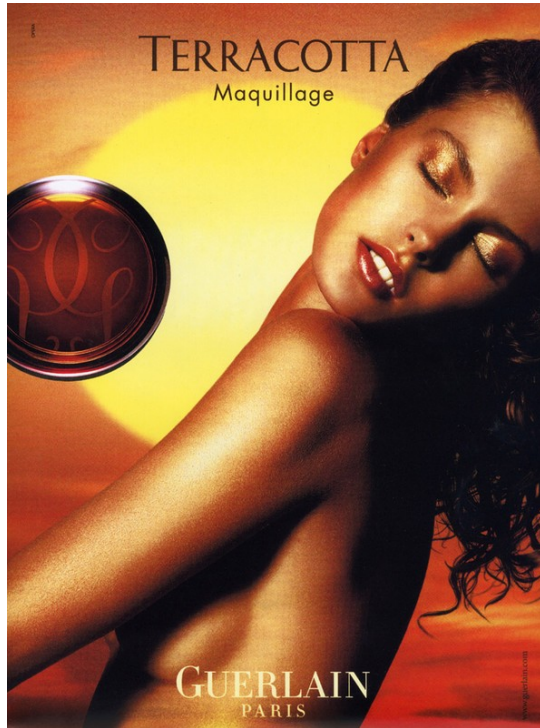
Christopher Ardoff

Art Department



Christopher Ardoff

Art Department



Christopher Ardoff

Art Department

BE ONE IN A MILLION
NOT ONE OF A MILLION

Treat yourself to collections precisely designed to meet your every need for strength, moisture and shine... all in one week.* So you can shine like one in a million.
www.pantene.com

PANTENE
PRO-V
shine

STRENGTH, MOISTURE & SHINE IN ONE WEEK.

©2007 P&G. *Strength and condition: strength against damage vs. non-conditioning shampoo.

GET STRAIGHT TO THE POINT

18
HOURS

The Extra Straight Collection
Get hair that looks seriously straight for up to 18 hours*. No matter what curves life takes.
www.pantene.com

PANTENE
PRO-V
shine

©2007 P&G. *Strength, conditioner and comb-in cream vs. non-conditioning shampoo.

VICHY
LABORATOIRES
HOMME

La firmeza de la piel depende de sus reservas de silicio.

SILICIUM-R
SILICIO + LICOPENO
TRATAMIENTO REGENERADOR REAFIRMANTE

El 1º tratamiento que recarga la piel con silicio y tensa las zonas flácidas.

Gracias al aporte diario de silicio, enriquecido con licopeno, la piel está más firme y los arrugas se reducen.

27% de firmeza*.

VICHY
LABORATOIRES
HOMME
SILICIUM-R

Hidroalergénico. Con Agua Termal de Vichy.

VICHY. LA SALUD TAMBIÉN ESTÁ EN LA PIEL.

Eficacia probada bajo control dermatológico. * Test realizado en la piel blanda del mentón en 22 hombres. Consulte a su farmacéutico.

Christopher Ardoff

www.art-dept.com

Art Department



Christopher Ardoff

www.art-dept.com