

Art Department



Georgina Billington

www.art-dept.com

Art Department



Georgina Billington

www.art-dept.com

Art Department



Georgina Billington

www.art-dept.com

Art Department



Georgina Billington

www.art-dept.com

Art Department



Georgina Billington

www.art-dept.com

Art Department



Georgina Billington

www.art-dept.com

Art Department



Georgina Billington

www.art-dept.com

Art Department



Georgina Billington

www.art-dept.com

Art Department



Georgina Billington

www.art-dept.com

Art Department



Georgina Billington

www.art-dept.com

Art Department



Georgina Billington

www.art-dept.com

Art Department



Georgina Billington

www.art-dept.com

Art Department



Georgina Billington

www.art-dept.com

Art Department



Georgina Billington

www.art-dept.com

Art Department



Georgina Billington

www.art-dept.com

Art Department



Georgina Billington

www.art-dept.com

Art Department



Georgina Billington

www.art-dept.com

Art Department



Georgina Billington

www.art-dept.com

Art Department



Georgina Billington

www.art-dept.com

Art Department



Georgina Billington

www.art-dept.com

Art Department



Georgina Billington

www.art-dept.com

Art Department



Georgina Billington

www.art-dept.com

Art Department



Georgina Billington

www.art-dept.com

Art Department



Georgina Billington

www.art-dept.com

Art Department



Georgina Billington

www.art-dept.com

Art Department



Georgina Billington

www.art-dept.com

Art Department



Georgina Billington

www.art-dept.com

Art Department

vogue beauty

editor: YVONNE WANG · LULU LONG · JAMIE CHEN

硬糖果色眼鏡
精湛的鉗和眼線，以貓眼池的手法在上眼瞼上畫出一條明確的線條，搭配低調的橘色口紅，讓整體特別復古有調。
黃色條紋襯衫，土黃色針織背心，大型耳飾 (Prada)

shadow play

這是一場小女孩幻想自己是成熟女人的想像遊戲。她們即便穿上復古華麗的衣裳，也掩不住逗趣的瘋狂可愛感，一種現實與幻想的模糊地帶。

257

Georgina Billington

www.art-dept.com

Art Department



Georgina Billington

www.art-dept.com

Art Department



geek chic
special issue

rosy outlook

粉霧感紅唇帶來一種輕熟女的大家風範，彩妝師利用模糊的唇線使霧感紅唇不過於老氣，搭配的粉量變類，則是偏橘色系。編輯 王正芳
紅色格子襯衫、深藍丹寧條紋西裝外套 (Mats Jacobs)
古董復古眼鏡 (Gianfranco Ferré by Silver Lining NYC)
耳飾 (Gucci)

262

Georgina Billington

www.art-dept.com

Art Department



Georgina Billington

www.art-dept.com

Art Department



Georgina Billington

www.art-dept.com

Art Department



Georgina Billington

www.art-dept.com

Art Department



Georgina Billington

www.art-dept.com

Art Department



Georgina Billington

www.art-dept.com

Art Department



Georgina Billington

www.art-dept.com

Art Department



Georgina Billington

www.art-dept.com

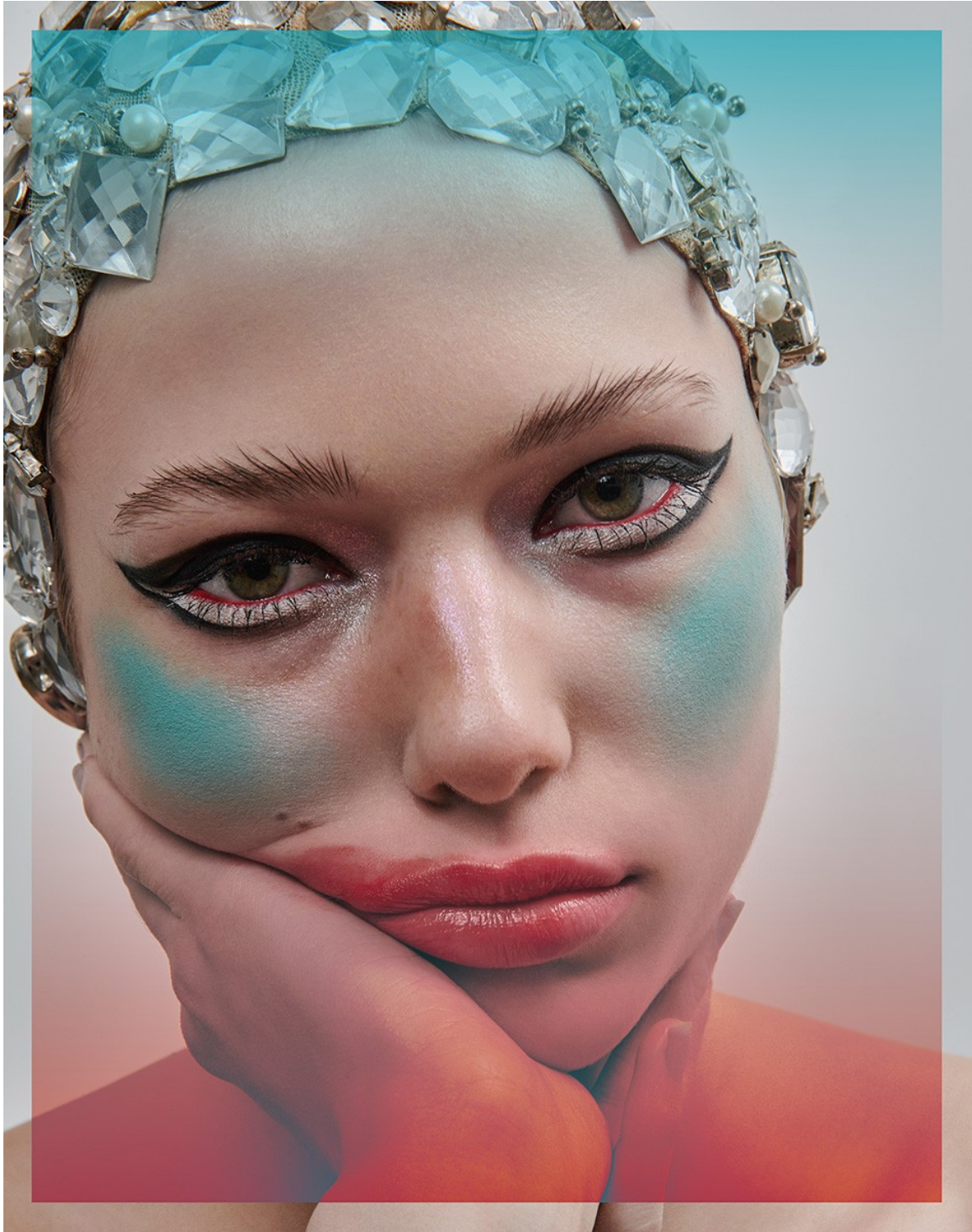
Art Department



Georgina Billington

www.art-dept.com

Art Department



Georgina Billington

www.art-dept.com

Art Department



Georgina Billington

www.art-dept.com

Art Department



Georgina Billington

www.art-dept.com

Art Department



Georgina Billington

www.art-dept.com

Art Department



Georgina Billington

www.art-dept.com

Art Department



Georgina Billington

www.art-dept.com

Art Department



Georgina Billington

www.art-dept.com

Art Department



Georgina Billington

www.art-dept.com

Art Department



Georgina Billington

www.art-dept.com

Art Department



Georgina Billington

www.art-dept.com

Art Department



Georgina Billington

www.art-dept.com

Art Department



Georgina Billington

www.art-dept.com

Art Department



Georgina Billington

www.art-dept.com

Art Department



Georgina Billington

www.art-dept.com

Art Department



Georgina Billington

www.art-dept.com

Art Department



Georgina Billington

www.art-dept.com

Art Department



Georgina Billington

www.art-dept.com

Art Department



Georgina Billington

www.art-dept.com

Art Department



Georgina Billington

www.art-dept.com

Art Department



Georgina Billington

www.art-dept.com

Art Department



Georgina Billington

www.art-dept.com

Art Department



Georgina Billington

www.art-dept.com

Art Department



Georgina Billington

www.art-dept.com

Art Department



Georgina Billington

www.art-dept.com

Art Department



Georgina Billington

www.art-dept.com

Art Department



Georgina Billington

www.art-dept.com

Art Department



Georgina Billington

www.art-dept.com

Art Department



Georgina Billington

www.art-dept.com

Art Department



Georgina Billington

www.art-dept.com

Art Department



Georgina Billington

www.art-dept.com

Art Department



Hermès roll-collar trench
coat, hermes.com; Alexander
McQueen chain-link earrings,
alexandermcqueen.com.

Georgina Billington

www.art-dept.com

Art Department



Georgina Billington

www.art-dept.com

Art Department



Georgina Billington

www.art-dept.com

Art Department



Georgina Billington

www.art-dept.com

Art Department



Georgina Billington

www.art-dept.com

Art Department



Georgina Billington

www.art-dept.com

Art Department



Georgina Billington

www.art-dept.com

Art Department



Georgina Billington

www.art-dept.com

Art Department



Georgina Billington

www.art-dept.com

Art Department



Georgina Billington

www.art-dept.com

Art Department



Georgina Billington

www.art-dept.com

Art Department



Georgina Billington

www.art-dept.com

Art Department



Georgina Billington

www.art-dept.com

Art Department



Georgina Billington

www.art-dept.com

Art Department



Georgina Billington

www.art-dept.com

Art Department



Georgina Billington

www.art-dept.com

Art Department



Georgina Billington

www.art-dept.com

Art Department



Georgina Billington

www.art-dept.com

Art Department



Georgina Billington

www.art-dept.com

Art Department



Georgina Billington

www.art-dept.com

Art Department



mcTEMA

НА ГОЛУБОМ ГЛАЗУ

Даже если усыпать все лицо блестками, это вряд ли скроет следы усталости. В меню салонов **CELEBRITY** есть комплексный уход для области вокруг глаз Sothys. Процедура включает четыре этапа: нанесение сыворотки для разглаживания морщин, массаж против отеков эксклюзивными фарфоровыми аксессуарами, лифтинг-маску и защитный гель. Эффект виден сразу — никаких отеков и темных кругов.

Georgina Billington

www.art-dept.com

Art Department



ПРАВО ВЫБОРА

Самое трудное перед праздниками – все успеть. К счастью, есть салоны, которые работают с раннего утра и до полуночи. Одно из таких мест – недавно открывшийся центр стиля нового формата **No1 BEAUTY**. Здесь работает 30 стилистов, а значит, практически всегда есть шанс записаться на удобное время. За макияж отвечает известный визажист Владимир Калинин, виртуозно создающий праздничные образы. Ну а для настроения каждую неделю с четверга по воскресенье в салоне играют диджеи.

ФОТО: JAMIE NELSON / ALABUT EDITO.COM

Georgina Billington

www.art-dept.com

Art Department

TEMA mc

С МЛАДЫХ НОГТЕЙ

Думаете, что знаете про маникюр все? Не будьте так уверены, если еще не делали японский экоманикюр P. Shine в салоне **NATUKEL STUDIO**. Это комплексный уход, направленный на придание ногтям безупречного внешнего вида через восстановление и оздоровление. Все начинается с перманентного глянцевого лака с помощью глины и пчелиного воска, потом идет увлажнение и питание и, наконец, восстановление с помощью масла. И масло это состоит из 100%-ного акульего сквалена.

ФОТО: JAMIE NELSON / BLAUBLU/EDITION.COM

Georgina Billington

www.art-dept.com

Art Department



Georgina Billington

www.art-dept.com

Art Department



Georgina Billington

www.art-dept.com

Art Department



Georgina Billington

www.art-dept.com

Art Department



Georgina Billington

Art Department



Georgina Billington

www.art-dept.com

Art Department



Georgina Billington

www.art-dept.com