

Art Department



Georgina Billington

www.art-dept.com

Art Department



Georgina Billington

www.art-dept.com

Art Department



Georgina Billington

www.art-dept.com

Art Department



Georgina Billington

www.art-dept.com

Art Department



Hermès roll-collar trench
coat, hermes.com; Alexander
McQueen chain-link earrings,
alexandermcqueen.com.

Georgina Billington

www.art-dept.com

Art Department



Stella McCartney canvas tailored jacket, canvas tailored trousers and mini Air Slide flip-flops, stellamacintyre.com; Bottega Veneta bracelet, bottegowatch.com.

Georgina Billington

www.art-dept.com

Art Department



Chond embroidered muslin jacket, embroidered muslin pants and muslin cape, chond.com; Chloe leather shoes, chloe.com.

Georgina Billington

www.art-dept.com

Art Department



Georgina Billington

www.art-dept.com

Art Department



Georgina Billington

www.art-dept.com

Art Department



Georgina Billington

www.art-dept.com

Art Department



Georgina Billington

www.art-dept.com

Art Department



Georgina Billington

www.art-dept.com

Art Department



Georgina Billington

www.art-dept.com

Art Department



Georgina Billington

www.art-dept.com

Art Department



Georgina Billington

www.art-dept.com

Art Department



Georgina Billington

www.art-dept.com

Art Department



Chanel Fantasy tweed coat,
cashmere shorts, metal and resin
bracelet, metal and kamakshi
necklace, earrings and tweed
handbag. chanel.com.

SINGULAR SENSATIONS

DECIDEDLY DISTINCTIVE, THE LATEST COLLECTIONS
OFFER A LEXICON OF UNIQUE EXPRESSION
THAT IS TRULY ONE OF A KIND.

PHOTOGRAPHED BY YOSHI MICHAELI
STYLED BY JAMES AGUIAR

Georgina Billington

www.art-dept.com

Art Department



Georgina Billington

www.art-dept.com

Art Department



Georgina Billington

www.art-dept.com

Art Department



Georgina Billington

www.art-dept.com

Art Department



Georgina Billington

www.art-dept.com

Art Department



Georgina Billington

www.art-dept.com

Art Department



Georgina Billington

www.art-dept.com

Art Department



Georgina Billington

Art Department



Georgina Billington

www.art-dept.com

Art Department



Georgina Billington

www.art-dept.com

Art Department



Georgina Billington

www.art-dept.com

Art Department



Georgina Billington

www.art-dept.com

Art Department



Georgina Billington

www.art-dept.com

Art Department



Georgina Billington

www.art-dept.com

Art Department



Georgina Billington

www.art-dept.com

Art Department



White sea island cotton popeline long sleeve shirt, black wool natte crew-neck, 3/4 sleeve single breasted coat with asymmetric frontal button closure and plissé details at the bottom, black silk faille short pants, **Gucci. Gucci, 973-564-7600**; Black all-over GG cotton pencil midi skirt, black all-over GG embroidered tulle culotte, black all-over GG cotton bustier, black feather muffs, **Gucci. Gucci, 973-564-7600**

Georgina Billington

www.art-dept.com

Art Department



FALL 2021 71

Georgina Billington

www.art-dept.com

Art Department



Georgina Billington

www.art-dept.com

Art Department



Georgina Billington

www.art-dept.com

Art Department



Georgina Billington

www.art-dept.com

Art Department



Georgina Billington

www.art-dept.com

Art Department



Georgina Billington

www.art-dept.com

Art Department



Georgina Billington

www.art-dept.com

Art Department



Georgina Billington

www.art-dept.com

Art Department



Georgina Billington

www.art-dept.com

Art Department



Georgina Billington

www.art-dept.com

Art Department



Georgina Billington

www.art-dept.com

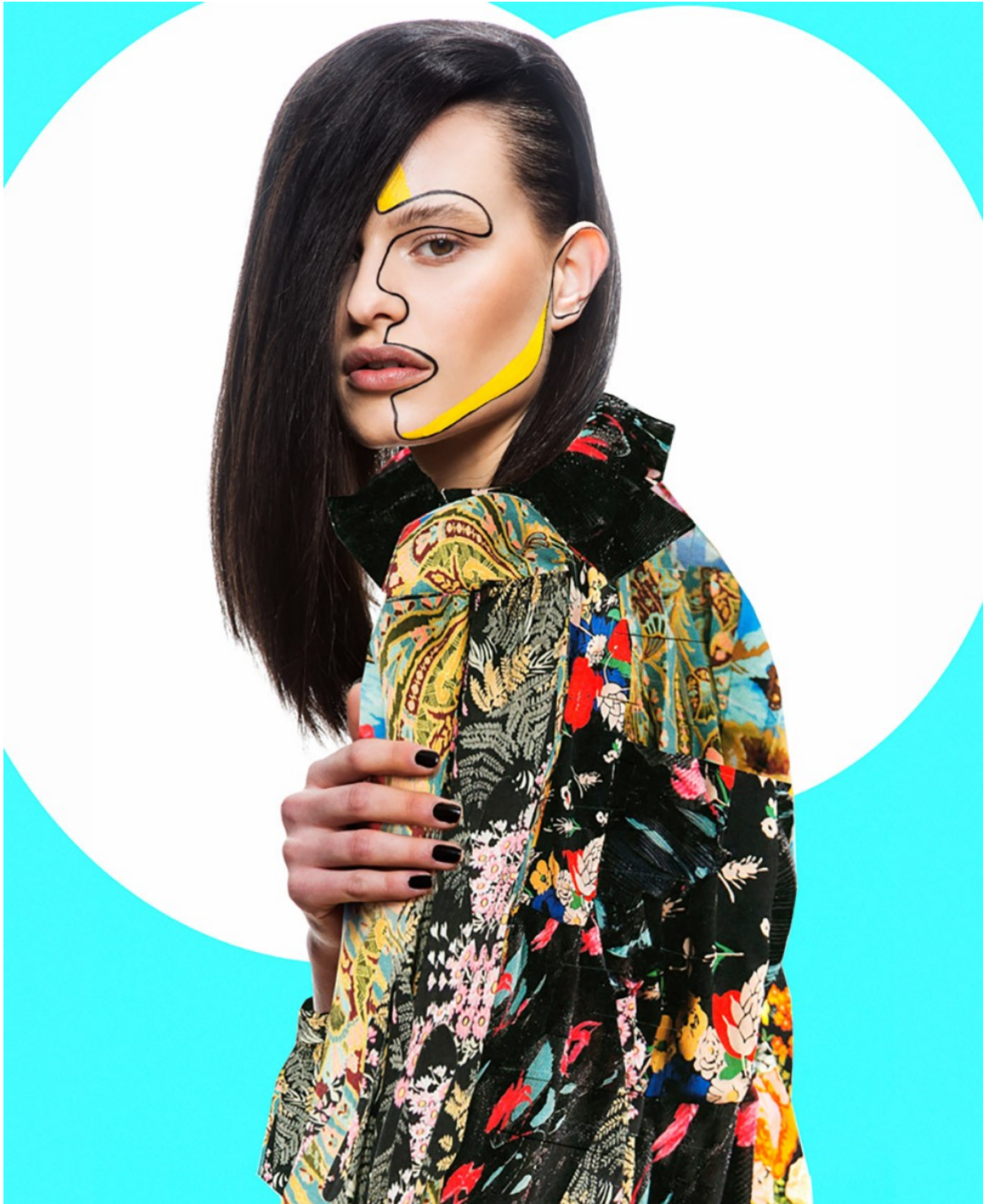
Art Department



Georgina Billington

www.art-dept.com

Art Department



Georgina Billington

www.art-dept.com

Art Department



Georgina Billington

www.art-dept.com

Art Department



Georgina Billington

www.art-dept.com

Art Department



Georgina Billington

www.art-dept.com

Art Department



Georgina Billington

www.art-dept.com

Art Department



Georgina Billington

www.art-dept.com

Art Department



vogue beauty

editor: YVONNE WANG · LULU LONG · JAMIE CHEN

硬糖果色眼線
潑藍的飽和眼線，以貓眼妝的手法在上眼瞼上畫出一條明確的線條，搭配低調的橘色口紅，讓整體特別復古有趣。
黃色條紋襯衫、土黃色針織背心、大型耳飾 (Prada)

shadow play

這是一場小女孩幻想自己是成熟女人的想像遊戲，她們即便穿上復古華麗的衣裳，也掩不住逗趣的瘋狂可愛感，一種現實與幻想的模糊地帶。

257

Georgina Billington

www.art-dept.com

Art Department



geek chic
special issue

rosy outlook

粉霧感紅唇帶來一種輕熟女的大家風範，彩妝師利用模糊的唇線使霧感紅唇不過於老氣，搭配的粉暈雙頰，則是偏橘色系。編輯 王正芳
紅色格子襯衫、深藍丹寧條紋西裝外套 (Mato Jacobs)
古董復古眼鏡 (Gianfranco Ferré by Silver Lining NYC)
耳飾 (Gucci)

262

Georgina Billington

www.art-dept.com

Art Department



Georgina Billington

www.art-dept.com

Art Department



Georgina Billington

www.art-dept.com

Art Department



Georgina Billington

www.art-dept.com

Art Department



Georgina Billington

www.art-dept.com

Art Department



Georgina Billington

www.art-dept.com

Art Department



Georgina Billington

www.art-dept.com

Art Department



Grace wears a dress by
Imprint ZA, sunglasses
by Galferdesign, and
belt by Pluma.

Photography by Indira Cesarine
Styling by Cannon
Make-up by Georgina Billington
Hair by William Schaedler

Georgina Billington

www.art-dept.com

Art Department



Georgina Billington

www.art-dept.com

Art Department



Georgina Billington

www.art-dept.com

Art Department



Georgina Billington

www.art-dept.com

Art Department



Georgina Billington

www.art-dept.com

Art Department



Georgina Billington

www.art-dept.com

Art Department



Georgina Billington

www.art-dept.com

Art Department



Georgina Billington

www.art-dept.com

Art Department



Georgina Billington

www.art-dept.com

Art Department



Georgina Billington

www.art-dept.com

Art Department



Georgina Billington

www.art-dept.com

Art Department



Georgina Billington

www.art-dept.com

Art Department



Georgina Billington

www.art-dept.com

Art Department



Georgina Billington

www.art-dept.com

Art Department



Georgina Billington

www.art-dept.com

Art Department



Georgina Billington

www.art-dept.com

Art Department



Georgina Billington

www.art-dept.com

Art Department



Georgina Billington

www.art-dept.com

Art Department



Georgina Billington

www.art-dept.com

Art Department



Georgina Billington

www.art-dept.com

Art Department



Georgina Billington

www.art-dept.com

Art Department



Georgina Billington

www.art-dept.com

Art Department



Georgina Billington

www.art-dept.com

Art Department



Georgina Billington

www.art-dept.com

Art Department



Georgina Billington

www.art-dept.com

Art Department



Georgina Billington

www.art-dept.com

Art Department



Georgina Billington

www.art-dept.com

Art Department



Georgina Billington

www.art-dept.com

Art Department



Georgina Billington

www.art-dept.com

Art Department



Georgina Billington

www.art-dept.com

Art Department



Georgina Billington

www.art-dept.com

Art Department



Georgina Billington

www.art-dept.com

Art Department



Georgina Billington

www.art-dept.com

Art Department



Georgina Billington

www.art-dept.com

Art Department



Georgina Billington

Art Department



Georgina Billington

www.art-dept.com

Art Department



Georgina Billington

www.art-dept.com

Art Department



Georgina Billington

www.art-dept.com


Art Department



Georgina Billington

www.art-dept.com

Art Department



VIBRANT GRACE

PHOTOGRAPHER - ARTHUR BELEBEAU @ART DEPT | STYLIST - KAREN LEVITT
MAKEUP - GEORGINA BILLINGTON @JUDYCASEY using MAC Cosmetics
MANICURIST - CASSANDRA DANIELA @FACTORY DOWNTOWN
MODEL - ACHOK @RED MODEL MANAGEMENT
PHOTO ASSISTANT- GO SUGIMOTO | DIGITAL- ETHAN KLEIN

BAG- Perrin Paris

58 | QUIET LUNCH | SS 2016

Georgina Billington

www.art-dept.com

Art Department



Georgina Billington

www.art-dept.com

Art Department



ORANGE WATCH: nooka
BAG: Perrin Paris
SHOES: Nicolas Kirkwood
BATHING SUIT: Agent Provocateur

60 | QUIET LUNCH | SS 2016

Georgina Billington

www.art-dept.com

Art Department



BATHING SUIT: Norma Kamal

QUIET LUNCH | SS 2016 | 61

Georgina Billington

www.art-dept.com

Art Department



Georgina Billington

www.art-dept.com