

Art Department



Sandrine Van Slee

www.art-dept.com

Art Department



A STAR IS BORN

In december zijn we niet bang voor een beetje glitter en glam. Subtiel of all over, in bronzen tinten of smart zwart: jij steelt de show op feesten én shinet overdag onverminderd door in glitterjurk met een oversized jas en stoere boots. Fotografie Anders Overgaard

STYLING LINDA GUMUS-GERRITSEN © SARAH LAIRD HAAR & MAKE UP SANDRINE VAN SLEE © ART-DEPARTMENT VOOR CHANEL FOTOGRAFIE-ASSISTENT JOHN LAW STYLING ASSISTENT INGÉ DE RIDDER MODEL ASTRID © ULLA MODELS MET DANK AAN BLUE AND WHITE MOTEL INC. KALISPEL MONTANA EN BULLDOG SALOON AND GRILL WHITEFISH MONTANA PRODUCER PAULA PENNING

94 JAN

Sandrine Van Slee

www.art-dept.com

Art Department



Sandrine Van Slee

www.art-dept.com

Art Department



Sandrine Van Slee

www.art-dept.com

Art Department



Sandrine Van Slee

www.art-dept.com

Art Department



Sandrine Van Slee

www.art-dept.com

Art Department



Sandrine Van Slee

www.art-dept.com

Art Department



Sandrine Van Slee

www.art-dept.com

Art Department



Sandrine Van Slee

www.art-dept.com

Art Department



Sandrine Van Slee

www.art-dept.com

Art Department



Sandrine Van Slee

www.art-dept.com

Art Department



Sandrine Van Slee

www.art-dept.com

Art Department



Sandrine Van Slee

www.art-dept.com

Art Department



Sandrine Van Slee

www.art-dept.com

Art Department



Sandrine Van Slee

www.art-dept.com

Art Department



Sandrine Van Slee

www.art-dept.com

Art Department



Sandrine Van Slee

www.art-dept.com

Art Department



Sandrine Van Slee

www.art-dept.com

Art Department



Sandrine Van Slee

www.art-dept.com

Art Department



Sandrine Van Slee

www.art-dept.com

Art Department



Sandrine Van Slee

www.art-dept.com

Art Department



Sandrine Van Slee

www.art-dept.com

Art Department



Sandrine Van Slee

www.art-dept.com

Art Department



Sandrine Van Slee

www.art-dept.com

Art Department



Sandrine Van Slee

Art Department



Summer loving

Some vacation memories stay with you long after your tan has faded. Here, 10 super-chic women share the stories behind the adventures they will never forget.

By OLIVE WAKEFIELD

*Photographs by TOM CRAIG
Styling by CARMEN BORGONOVO*

nsult by Karla
etto

Sandrine Van Slee

www.art-dept.com

Art Department



Sandrine Van Slee

www.art-dept.com

Art Department



Sandrine Van Slee

www.art-dept.com

Art Department



Sandrine Van Slee

www.art-dept.com

Art Department



Sandrine Van Slee

www.art-dept.com

Art Department



Sandrine Van Slee

www.art-dept.com

Art Department



Sandrine Van Slee

www.art-dept.com

Art Department



Sandrine Van Slee

www.art-dept.com

Art Department



Sandrine Van Slee

www.art-dept.com

Art Department



Sandrine Van Slee

www.art-dept.com

Art Department



Sandrine Van Slee

www.art-dept.com

Art Department



Sandrine Van Slee

www.art-dept.com

Art Department



Sandrine Van Slee

www.art-dept.com

Art Department



Sandrine Van Slee

www.art-dept.com

Art Department



Sandrine Van Slee

www.art-dept.com

Art Department



Sandrine Van Slee

www.art-dept.com

Art Department



Sandrine Van Slee

www.art-dept.com

Art Department



Sandrine Van Slee

www.art-dept.com

Art Department



Sandrine Van Slee

www.art-dept.com

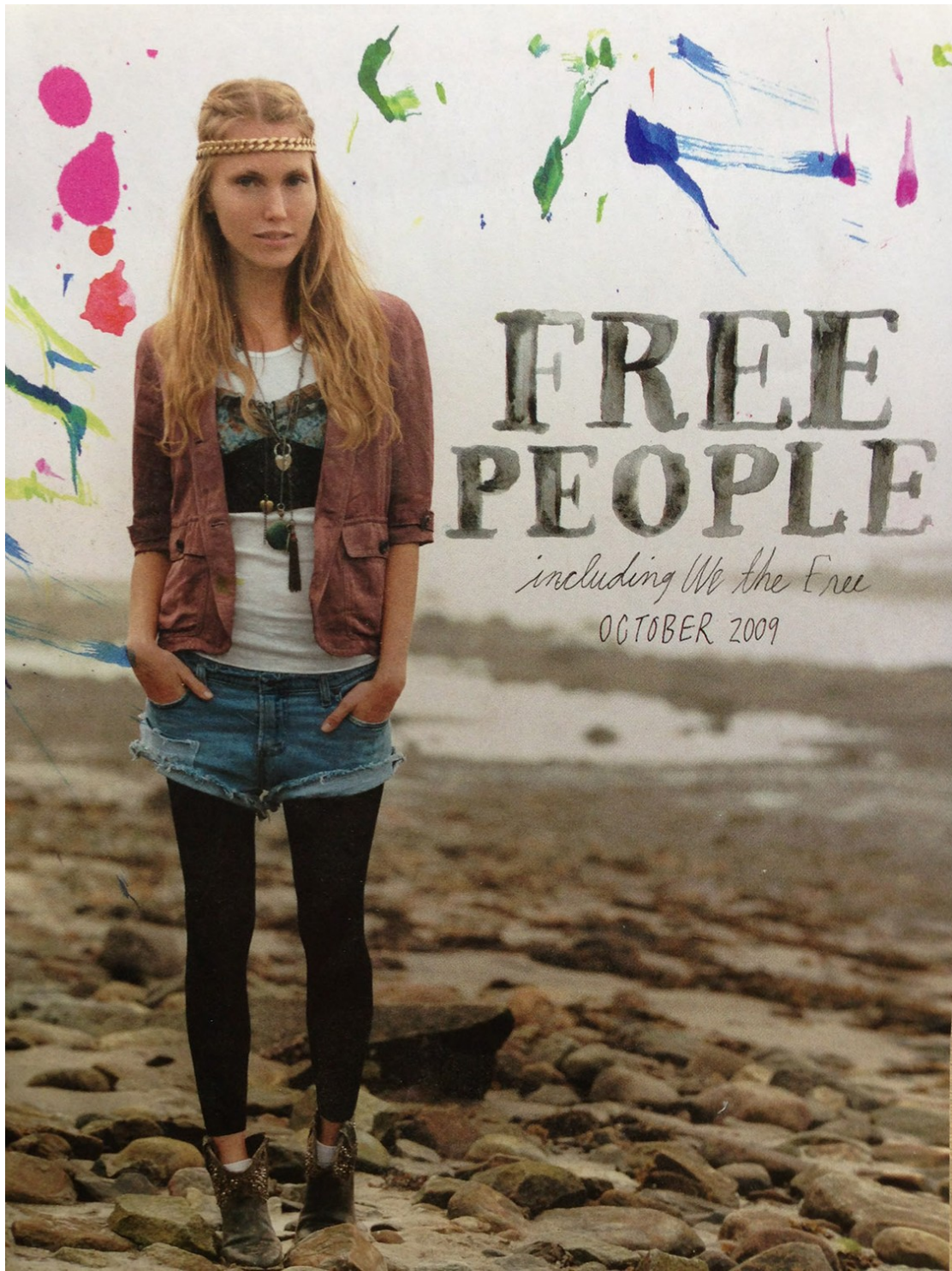
Art Department



Sandrine Van Slee

www.art-dept.com

Art Department



Sandrine Van Slee

www.art-dept.com

Art Department



Sandrine Van Slee

www.art-dept.com

Art Department



Sandrine Van Slee

www.art-dept.com

Art Department



Sandrine Van Slee

www.art-dept.com

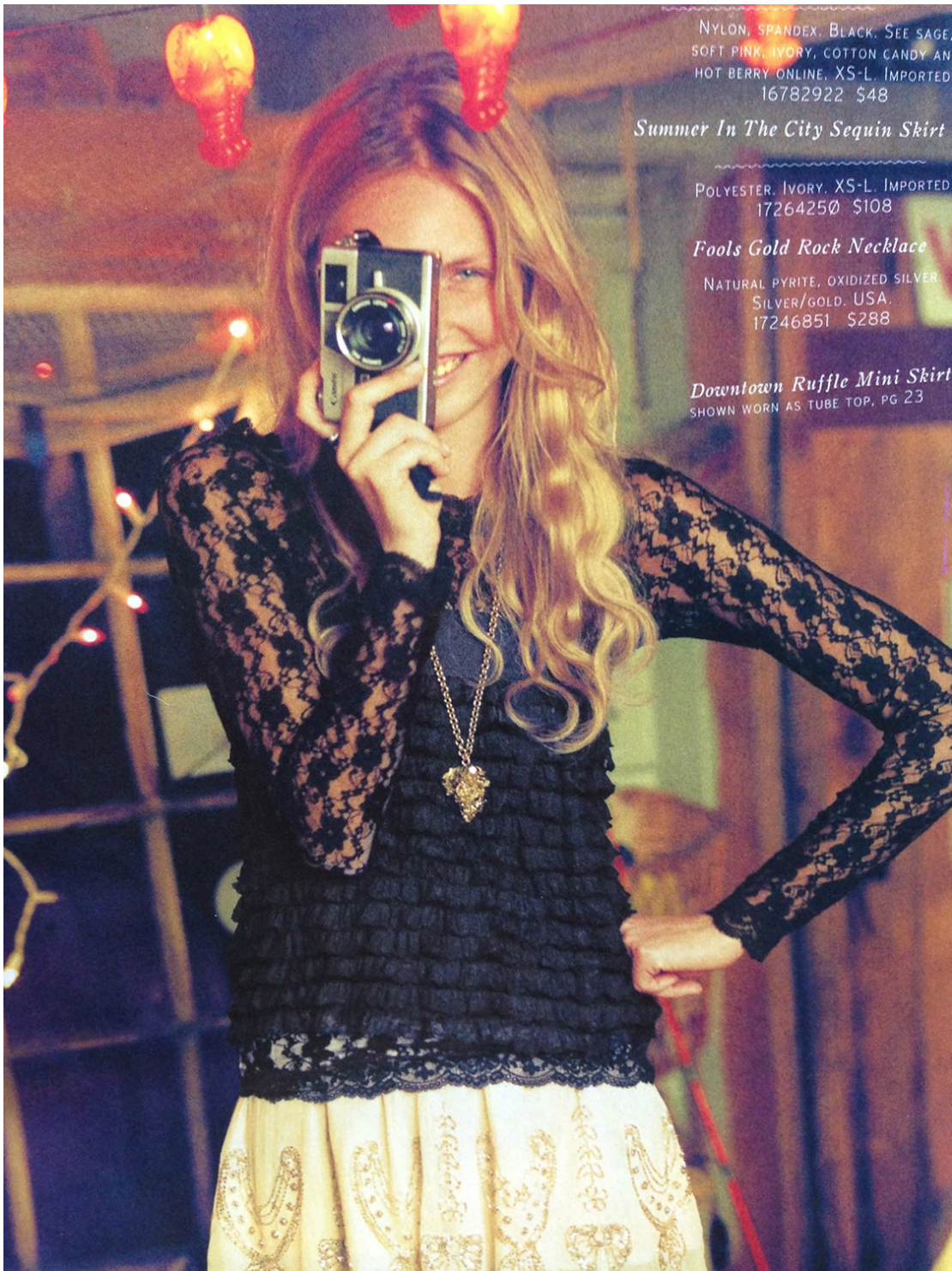
Art Department



Sandrine Van Slee

www.art-dept.com

Art Department



Sandrine Van Slee

www.art-dept.com

Art Department



Sandrine Van Slee

www.art-dept.com

Art Department



Sandrine Van Slee

www.art-dept.com

Art Department



Sandrine Van Slee

www.art-dept.com

Art Department



GOOD
TIDINGS

COLEHAAN

GREAT
SAVINGS
TO ALL

50-70% OFF
ENTIRE
SELECTION*

**Suggested Retail Prices at
Cole Haan Outlet Stores*

Sandrine Van Slee

www.art-dept.com

Art Department



Sandrine Van Slee

www.art-dept.com

Art Department



x
**SCARLET
FEVER**
x

x
CRIMSON,
CARDINAL,
FLAME,
RUBY,
TOMATO,
CLARET.
THIS BOLD,
FIERY
HUE DATES
BACK TO
CAVE ART,
AND ITS
POWER
ENDURES
TODAY

x
PHOTOGRAPHED BY
PAUL JUNG
STYLED BY
JONNY LICHTENSTEIN

Sandrine Van Slee

www.art-dept.com

Art Department



Sandrine Van Slee

www.art-dept.com

Art Department



X

HALSTON HERITAGE
wool coat and asymmetrical gown with belt;
HALSTON.COM. OPPOSITE:
NARS Audacious mascara in *Black Moon*; [NARS COSMETICS.COM](http://NARS-COSMETICS.COM). For prices and links to products, go to more.com/wheretobuy. ©

X

HAIR AND MAKEUP:
SANDRINE VAN SLEE USING DIORSHOW AND ORIBE HAIR CARE AT ART DEPARTMENT; NAILS: MAYUMI ABUKU USING DIOR VERNIS AT RONA REPRESENTS; PROP STYLIST: SONIA RENTSCH; CASTING: ALINA ZAKAITE; MODEL: ATONG/TRUMP MODELS

X

WANT TO KNOW MORE ABOUT HOW TO WEAR THIS TREND AT EVERY AGE? TURN TO PAGE 92.

90
MORE SEPTEMBER 2013

Sandrine Van Slee

www.art-dept.com

Art Department



Sandrine Van Slee

www.art-dept.com

Art Department



Sandrine Van Slee

www.art-dept.com

Art Department



Sandrine Van Slee

Art Department



Sandrine Van Slee

www.art-dept.com

Art Department



Sandrine Van Slee

www.art-dept.com

Art Department



Sandrine Van Slee

www.art-dept.com

Art Department



Sandrine Van Slee

www.art-dept.com

Art Department



Belt RAG & BONE

Sandrine Van Slee

www.art-dept.com

Art Department



Sandrine Van Slee

www.art-dept.com

Art Department



Sandrine Van Slee

www.art-dept.com

Art Department



The BA Q&A



Christina Tosi

The Milk Bar pastry queen and *MasterChef* judge on the challenges of reality TV and her biggest disappointment in the kitchen (hint: it involves gummi bears)



Sandrine Van Slee

www.art-dept.com

Art Department



Sandrine Van Slee

www.art-dept.com

Art Department



Así es Ali Michael, nuestra TOP de portada

Vegana, aficionada a los videojuegos y a la hípica, se ha convertido en el rostro visible de la lucha para que las «modelos sanas» dominen las pasarelas.



Llega la primera, pero no se enfrasca en el móvil: interroga al equipo de YO DONA sobre su horóscopo. No el signo del zodiaco a secas, no «ella es Tauro», sino el ascendente y la posición de Venus en sus cartas astrales. Descodica a todos con su exhaustivo interés en estas cuestiones, pero pronto baja a la Tierra al dejar su maleta de mano en el suelo. «Voy a Los Ángeles y siempre llevo ligera de equipaje», explica Alexandra Michael «Al para la industria de la moda», la top estadounidense conocida por sus ojos, sus fotos con Terry Richardson, Paolo Foversi, Mario Gorenzi o Patrick Demarchelier, y la polémica sobre el peso en la que se vio envuelta en febrero de 2008. La texana, de 23 años, pasó de ser una cara fresca «new face» en el argot del mundillo en la portada del *W*, retratada por Craig McDean, a poco menos que una zepesada. En plena Semana de la Moda de París, la despidieron porque, según los directores de casting, no era lo suficientemente estilizada como para caminar por la pasarela. Su madre, Mary Ann, lo contó, y Michael, que entonces contaba con 17 años, protagonizó un sonado artículo en el *Wall Street Journal* que cuestionaba no ya el peso puma de las

modelos, sino la presión que debían soportar para, como ella, pasar de unos saludables 59 kilos a 46 «más 1,75», dejándose la salud en el camino. Michael no tuvo la regla durante un año como consecuencia de un régimen que se reducía a avena con agua para desayunar, uvas en el almuerzo y lechuga de cena.

Dio su prometedora carrera por zanjada, pero pronto cayó en la cuenta de que, en realidad, estaba ante la oportunidad de «ayudar a otras personas», lograr que las modelos sanas «dominen las pasarelas para atraer de nuevo el interés de la gente en la moda», confesó a la periodista Patti Huntington. En lugar de encerrarse en su hogar texano, Michael habló en los medios del asunto. Y la industria que la despachó en febrero con un abrupto «tus pechos son gordos» la recibió con los brazos abiertos en mayo. Ha sido portada del número de otoño-invierno de *Purple* —la del vigésimo aniversario de la publicación, entre otras, y protagonizado numerosos editoriales. Además, ha desfilado para Yohji Yamamoto «el único a quien su peso no pareció incomodar en la infuista temporada otoño-invierno 2008/09», Philip Lim, Sonia Rykiel o Burberry Prorsum, y puesto cara al perfume *Jeanne Lanvin* de la casa francesa. Le encantan los videojuegos y la hípica, es vegana y entre sus amigas están Meghan Colson y Karlie Kloss. Intima de ello en su Twitter a sus 6.563 seguidores que, a estas alturas, ya se habrán dado cuenta de que las agónicas canciones de Thom Yorke han dado paso al RnB de Rihanna y Beyoncé o al hip hop de Frank Ocean, con quien, por cierto, no le importaría casarse. En broma, claro. Vive con su novio y «mejor amigo» desde 2004, el guitarrista David Broderick. *Publicado: 2014*



Sandrine Van Slee

www.art-dept.com

Art Department

A woman with her hair styled up is sitting on a dark, ornate chair. She is wearing a strapless, knee-length dress with a red and black floral pattern. She is also wearing bright red, ankle-high boots. Her right hand is resting on her chin, and she is looking towards the camera with a slight smile. The background is dark and moody, with a large mirror reflecting her. The floor is made of dark wood.

Pre-Season Special

GET THE BOOTIE

5 Fab Fall Pairs to Start Wearing Now

RAG & BONE
Durham Boots

Sandrine Van Slee

www.art-dept.com

Art Department



Sandrine Van Slee

www.art-dept.com

Art Department



Sandrine Van Slee

www.art-dept.com

Art Department



Sandrine Van Slee

www.art-dept.com

Art Department



Sandrine Van Slee

www.art-dept.com

Art Department



Dress by Haider Ackermann; shoes by Saint Laurent; by Hedi Slimane; cuff by Chloé

STYLE RÉSUMÉ

NAME: Aimee Mullins

PROFESSION: Fundraiser, paralympic athlete, actress, global brand ambassador for L'Oréal Paris

MY FAVORITE ACCESSORIES: Alaïa shoes, Valextra handbag for day, vintage clutch for evening

MY GO-TO LABELS: Rick Owens, Alexander McQueen, Saint Laurent

Sandrine Van Slee

www.art-dept.com

Art Department



Sandrine Van Slee

www.art-dept.com

Art Department



Sandrine Van Slee

www.art-dept.com

Art Department



STYLE RÉSUMÉ

NAME: Misty Copeland

PROFESSION: Soloist
ballerina at the American
Ballet Theatre

MY GO-TO LABELS: Rag &
Bone, Christian Louboutin,
Diane von Furstenberg,
Helmut Lang, Catherine
Malandrino

MY FAIL-SAFE PIECES: An
Alexander McQueen blazer
and J Brand jeans

Sweater by The
Row; skirt by Sophia
Kokosalaki

Sandrine Van Slee

www.art-dept.com

Art Department

The INTERVIEW: Lorna Simpson

As she prepares for London's Frieze art fair, the New York artist talks to EVE CLAXTON about her modern work, style and friends in high-fashion places

Photographs by BJORN IOOSS

Lorna Simpson runs barefoot up the wooden stairs of her studio in Brooklyn's Clinton Hill, trailing a long cardigan behind her. As one of the art world's most in-demand artists, she's constantly on the go. This month, the New Yorker's work will be showcased at Frieze in London; then a retrospective of her career opens at the Haus der Kunst in Munich and as part of the Vera List Art Project at the Lincoln Center in New York; then she will be speaking about the theme of icons at the first TEDx event, an educational off-shoot of the original TED talks, held at the Metropolitan Museum Of Art. And



Dress by
Zero+MariaCornejo;
shoes by Aquazzura;
earrings by Maria
Black; bracelet by
Aurélie Bidermann

Sandrine Van Slee

www.art-dept.com

Art Department



Sweater by Rick Owens; pants by Tibi; pumps by Aquazzura; ring Lorna's own

Sandrine Van Slee

www.art-dept.com

Art Department



Sandrine Van Slee

www.art-dept.com

Art Department



Sandrine Van Slee

www.art-dept.com

Art Department



Sandrine Van Slee

www.art-dept.com

Art Department



Sandrine Van Slee

www.art-dept.com

Art Department



Sandrine Van Slee

www.art-dept.com

Art Department



Sandrine Van Slee

www.art-dept.com

Art Department



Sandrine Van Slee

www.art-dept.com

Art Department



Sandrine Van Slee

www.art-dept.com

Art Department



Sandrine Van Slee

www.art-dept.com

Art Department



Sandrine Van Slee

www.art-dept.com

Art Department



Sandrine Van Slee

www.art-dept.com

Art Department



Sandrine Van Slee

www.art-dept.com

Art Department



Sandrine Van Slee

www.art-dept.com

Art Department



Sandrine Van Slee

www.art-dept.com

Art Department



Sandrine Van Slee

www.art-dept.com

Art Department



Sandrine Van Slee

www.art-dept.com

Art Department



Sandrine Van Slee

www.art-dept.com

Art Department



Sandrine Van Slee

www.art-dept.com

Art Department



Sandrine Van Slee

www.art-dept.com

Art Department



Sandrine Van Slee

www.art-dept.com

Art Department



Sandrine Van Slee

www.art-dept.com

Art Department



Sandrine Van Slee

www.art-dept.com

Art Department



Sandrine Van Slee

www.art-dept.com

Art Department



Sandrine Van Slee

www.art-dept.com

Art Department



Sandrine Van Slee

www.art-dept.com

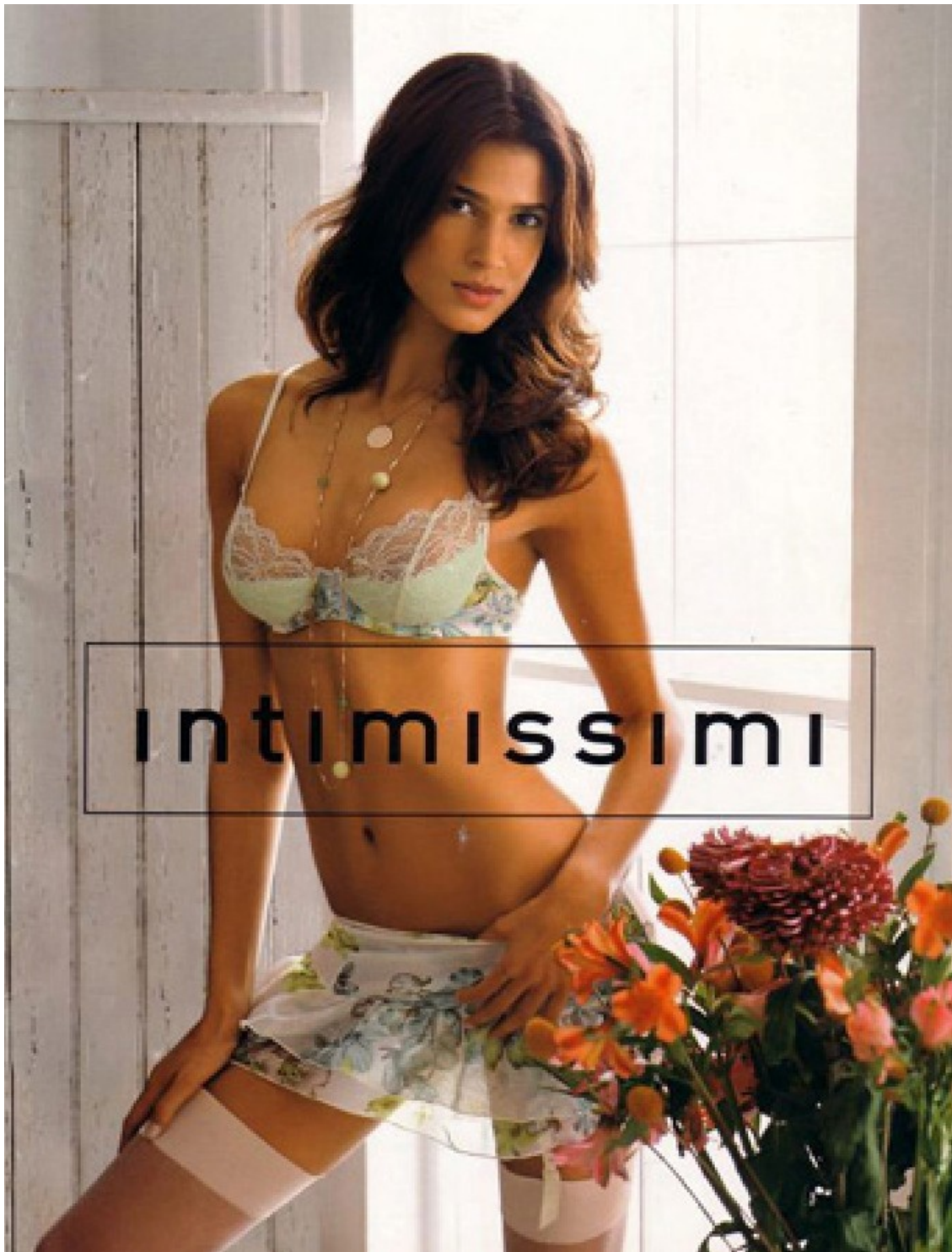
Art Department



Sandrine Van Slee

www.art-dept.com

Art Department



Sandrine Van Slee

www.art-dept.com

Art Department



Sandrine Van Slee

www.art-dept.com

Art Department



Sandrine Van Slee

www.art-dept.com

Art Department



Sandrine Van Slee

www.art-dept.com

Art Department



Sandrine Van Slee

www.art-dept.com

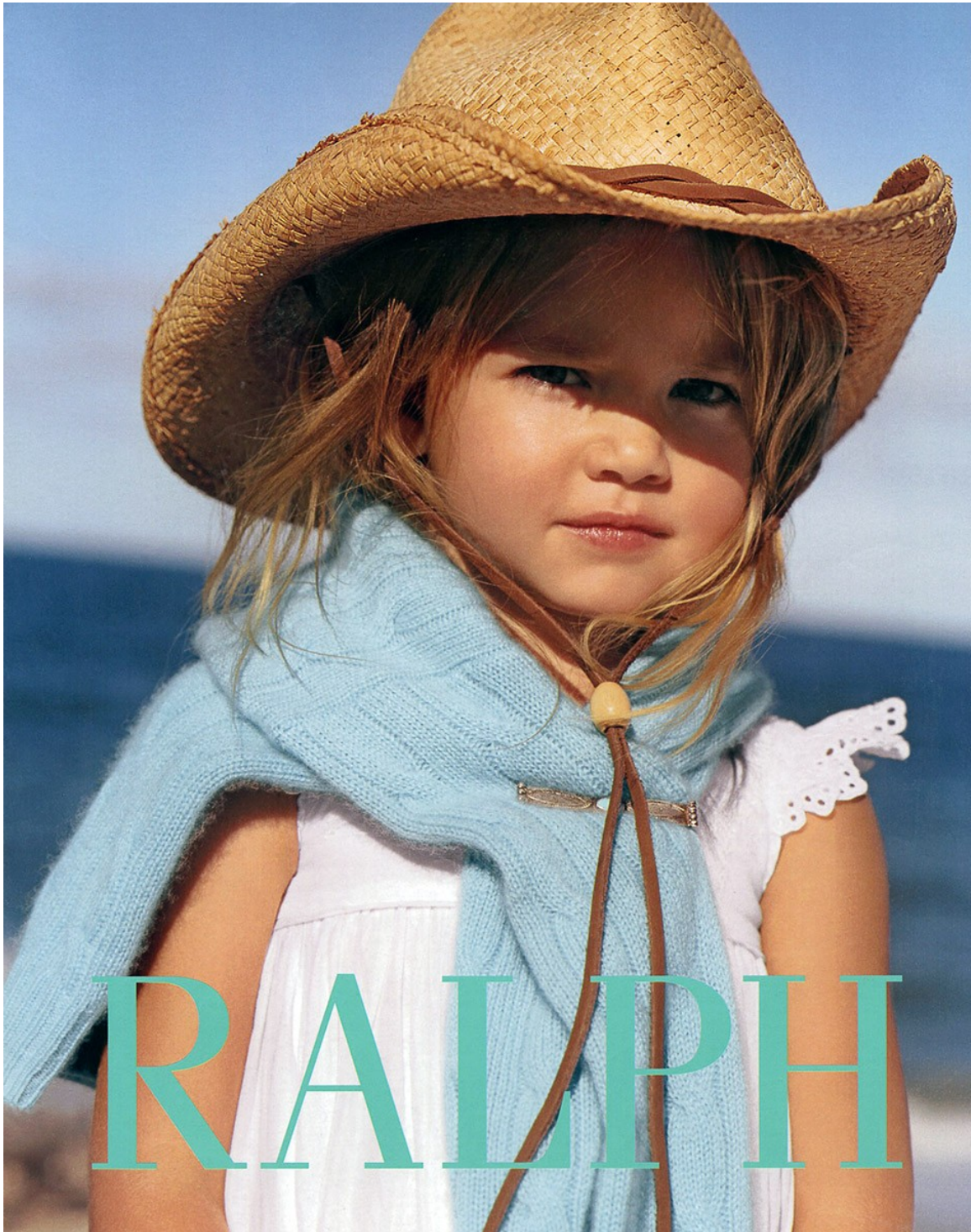
Art Department



Sandrine Van Slee

www.art-dept.com

Art Department



Sandrine Van Slee

www.art-dept.com

Art Department



Sandrine Van Slee

Art Department

In questa pagina: ha ricami in pizzo l'abito con collo tondo di **Mini Ramilans**. Scarpina con cinturino di **Mirella Più**. Nella pagina accanto: abito di Sangallo con balze e collo evanescente di voile ricamato di **Silvia**. Bebè rosa di **Chérie**. Cappello di paglia (Eric Javits).



Sandrine Van Slee

www.art-dept.com

Art Department



Nella pagina accanto: la camicia candida di **Alberta Ferretti Girl** ha una balza plissé. Nastro (Nastrificio Topp Italiana). In questa pagina: per le bambine in piedi, abito con balza e con volant sulle maniche di **Gina Diwan, Paris**; per la bambina seduta, vestito con maniche a palloncino di **Kenzo enfant**. Guanti (Edera), calzine (Story Loris), bebè (Chérie).

Sandrine Van Slee

www.art-dept.com

Art Department



In questa pagina: una nuvola di organza ricamata per l'abito con maniche a sbuffo di Rita. Calze (Story Loris), bebè (Mini Walker). Poltrona (Polo by Ralph Lauren). Nella pagina accanto: per lui, camicia in cotone di Boy; per lei, vestito con maniche a sbuffo e colletto plissé di Gina Diwan, Paris. Bobè bianche con fiore in organza di Bloony by Moki.

Sandrine Van Slee

www.art-dept.com

Art Department



GALLIPE CLARK

Sandrine Van Slee

www.art-dept.com

Art Department



Sandrine Van Slee

www.art-dept.com

Art Department



Le scarpe BAMBINO e JUNIOR sono prodotte e distribuite da: FALC S.p.A. - Civitanova Marche Alta (MC) - Tel. 0733/79824

Sandrine Van Slee

www.art-dept.com

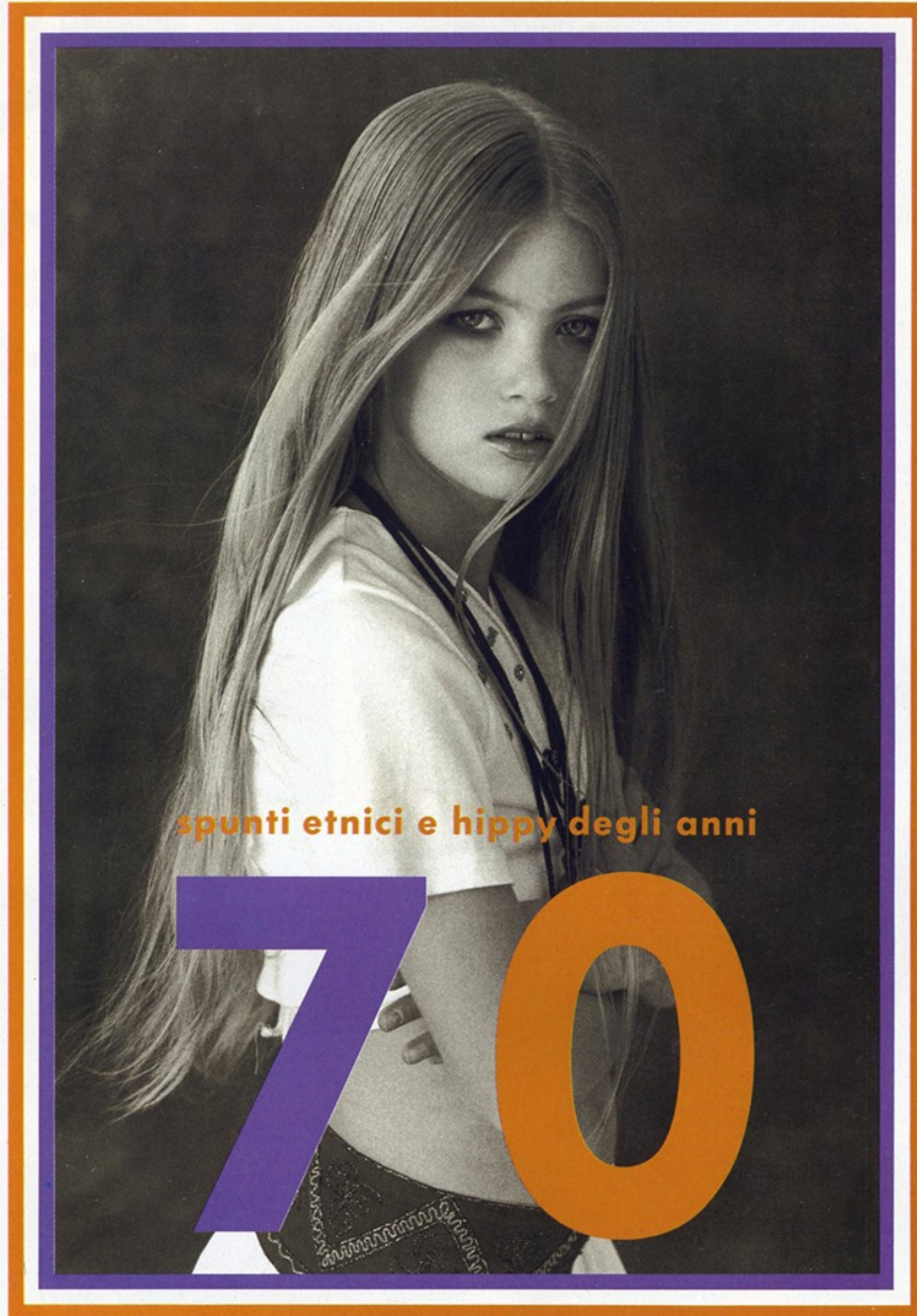
Art Department



Sandrine Van Slee

www.art-dept.com

Art Department



344

Sandrine Van Slee

www.art-dept.com

Art Department



Sandrine Van Slee

www.art-dept.com

Art Department



Sandrine Van Slee

Art Department



Sandrine Van Slee

www.art-dept.com

Art Department



Février 2012 - GQ DE 133

Sandrine Van Slee

www.art-dept.com

Art Department



Sandrine Van Slee

www.art-dept.com

Art Department



Sandrine Van Slee

www.art-dept.com

Art Department



Sandrine Van Slee

www.art-dept.com

Art Department

The New York Times Magazine
NOVEMBER 9, 2003 / SECTION 6

'Tis
the Oscar-scheming, novel-adapting,
release-date-juggling, upper-mid-brow-seducing, period-recreating,
art-budget-breaking,
grown-up-pleasure-making prestige film season.

The Annual Movie Issue

Sandrine Van Slee

www.art-dept.com

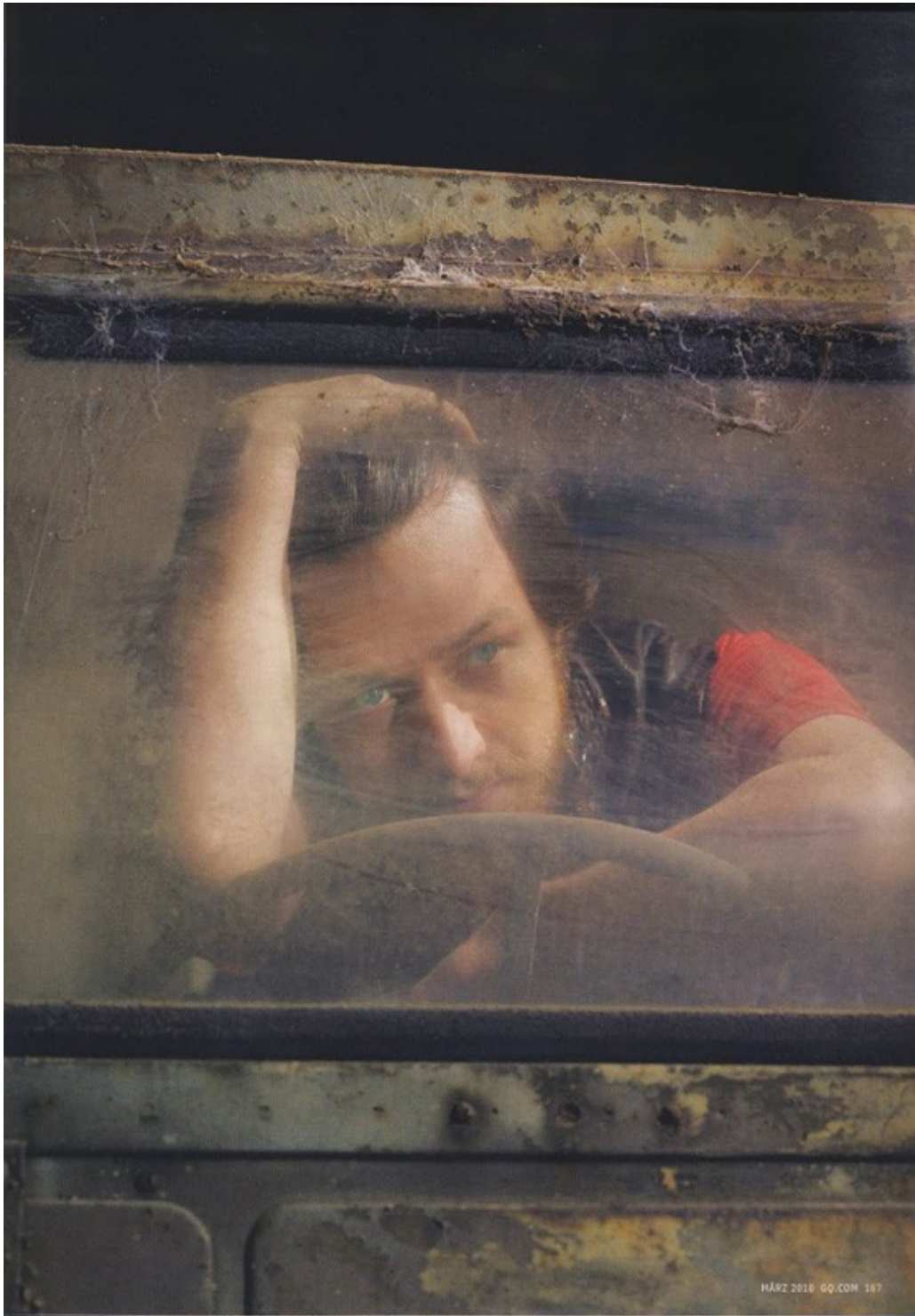
Art Department



Sandrine Van Slee

www.art-dept.com

Art Department



Sandrine Van Slee

www.art-dept.com

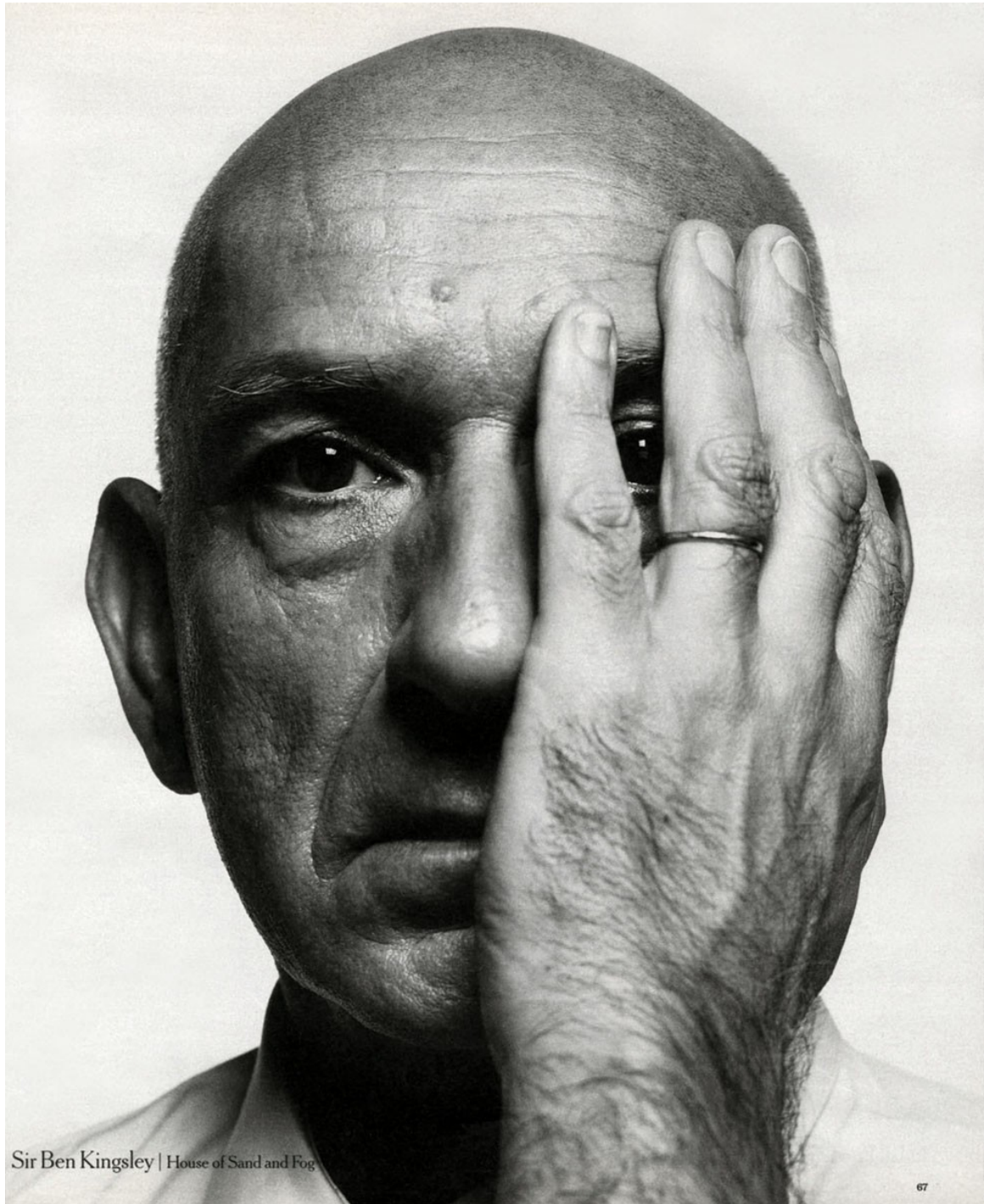
Art Department



Sandrine Van Slee

www.art-dept.com

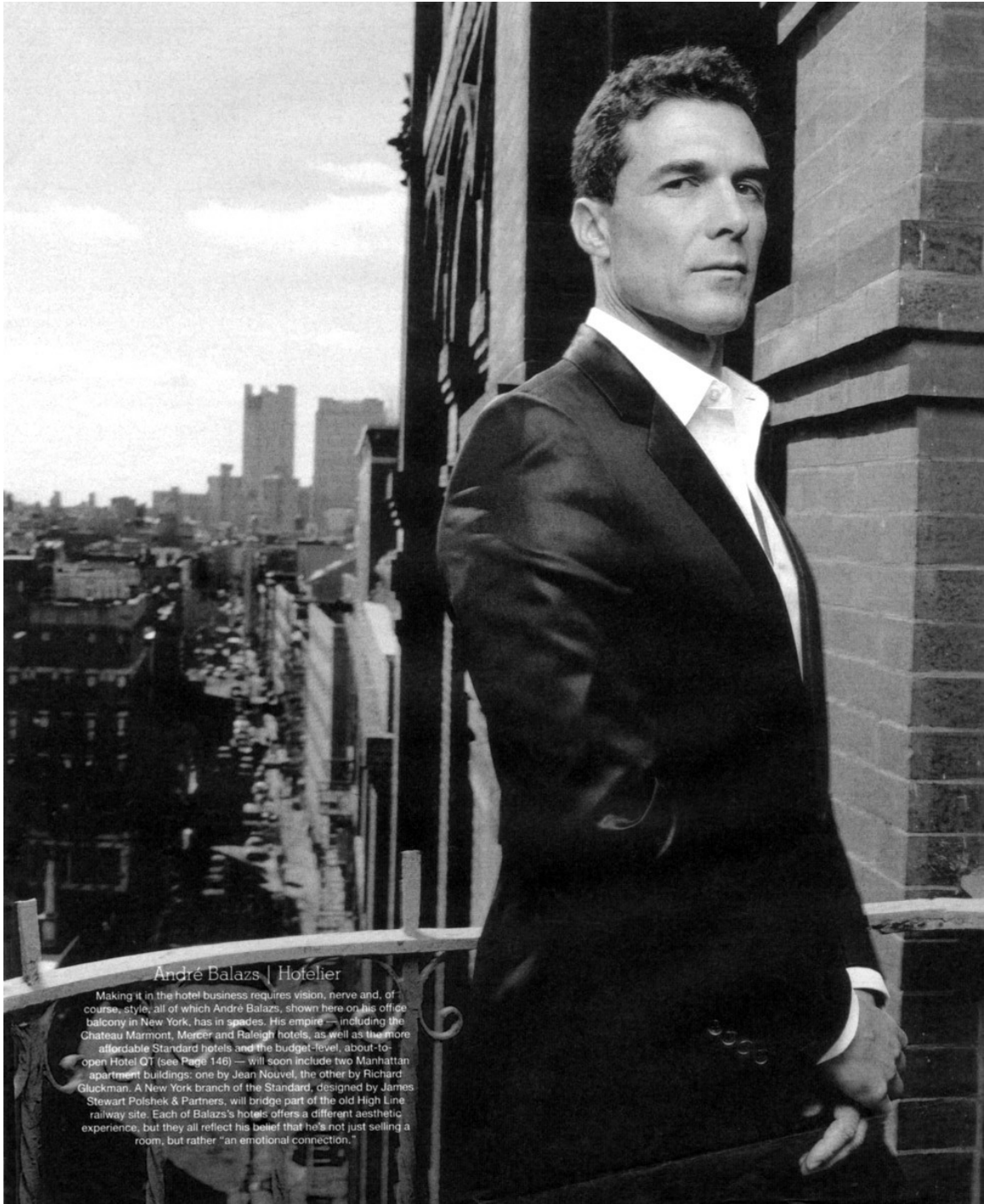
Art Department



Sandrine Van Slee

www.art-dept.com

Art Department



André Balazs | Hotelier

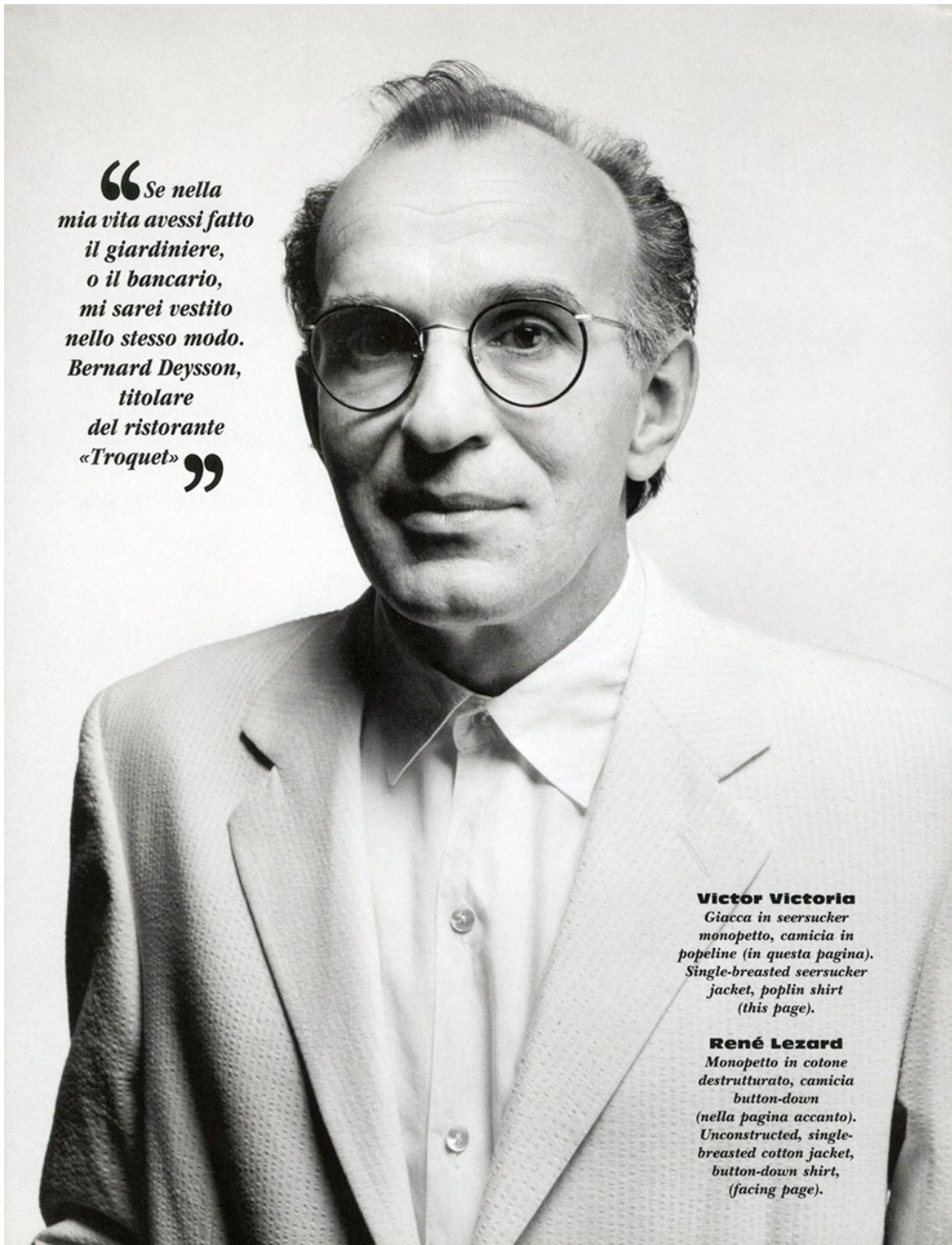
Making it in the hotel business requires vision, nerve and, of course, style, all of which André Balazs, shown here on his office balcony in New York, has in spades. His empire — including the Chateau Marmont, Mercer and Raleigh hotels, as well as the more affordable Standard hotels and the budget-level, about-to-open Hotel QT (see Page 146) — will soon include two Manhattan apartment buildings: one by Jean Nouvel, the other by Richard Gluckman. A New York branch of the Standard, designed by James Stewart Polshek & Partners, will bridge part of the old High Line railway site. Each of Balazs's hotels offers a different aesthetic experience, but they all reflect his belief that he's not just selling a room, but rather "an emotional connection."

Sandrine Van Slee

www.art-dept.com

Art Department

“*Se nella mia vita avessi fatto il giardiniere, o il bancario, mi sarei vestito nello stesso modo.*
Bernard Deysson,
titolare del ristorante «Troquet»”



Victor Victoria
*Giacca in seersucker monopetto, camicia in popeline (in questa pagina).
Single-breasted seersucker jacket, poplin shirt (this page).*

René Lezard
*Monopetto in cotone destrutturato, camicia button-down (nella pagina accanto).
Unconstructed, single-breasted cotton jacket, button-down shirt, (facing page).*

Sandrine Van Slee

Art Department



“ *Mi piace il rock. I miei coetanei preferiscono la T-shirt, ma io, in omaggio a Jimi Hendrix, scelgo la camicia.*
Kalkin Narvias,
studente di Conservatorio **”**

Industria

Camicia in popeline di cotone sovratinto con bottoni in metallo (nella pagina accanto).

Overprint cotton poplin shirt with metal buttons (facing page).

Casacca in cotone con collo a camicia (in questa pagina).

Cotton smock with shirt collar (this page).

Fashion editor, Susan Winget.

Foto Fabrizio Ferri

Sandrine Van Slee

Art Department



FABRIZIO FERRI

“La verità? Mi sento romantico fin nel midollo. Mi piacciono le camicie ampie, un po' bobémien. Trovo che mi somiglino. Eric Henri Aiperin, studente di recitazione”

Industria

Camicia in lino effetto canovaccio (nella pagina accanto). Pantaloni militari, Diesel; cappello, Borsalino.

Shirt in coarse effect linen (facing page).

Military-style trousers, Diesel; hat, Borsalino. Camicia oversize in cotone e viscosa (in questa pagina).

Oversize cotton and viscose shirt (this page).

Sandrine Van Slee

www.art-dept.com

Art Department



Sandrine Van Slee

www.art-dept.com

Art Department



КОЖАНАЯ КУРТКА, СУИСС;
ТОПСТВОВКА ИЗ ХЛОПКА,
ТРИКОТАЖНЫЕ БРЮКИ, ВСЁ
ICEBERG; КОЖАНЫЕ ПЕРЧАТКИ,
ERMEGENILDO ZEGNA.

164 00 НОЯБРЬ 2014

Sandrine Van Slee

www.art-dept.com

Art Department



Sandrine Van Slee

www.art-dept.com

Art Department



Sandrine Van Slee

www.art-dept.com

Art Department



Sandrine Van Slee

www.art-dept.com

Art Department

In questa pagina: cardigan in felpa di **Essegi**; camicia fantasia (**Ouragan**). Nella pagina accanto: montgomery scozzese e gonna a ruota in velluto liscio di **Imelde & Stefano Cavallari**; **I Pinco Pallino**, cardigan in felpa (**Bill e Teddy Milton**); calze (**Malerba**); scarponcini (**Sultanino Sprint**).



Sandrine Van Slee

www.art-dept.com

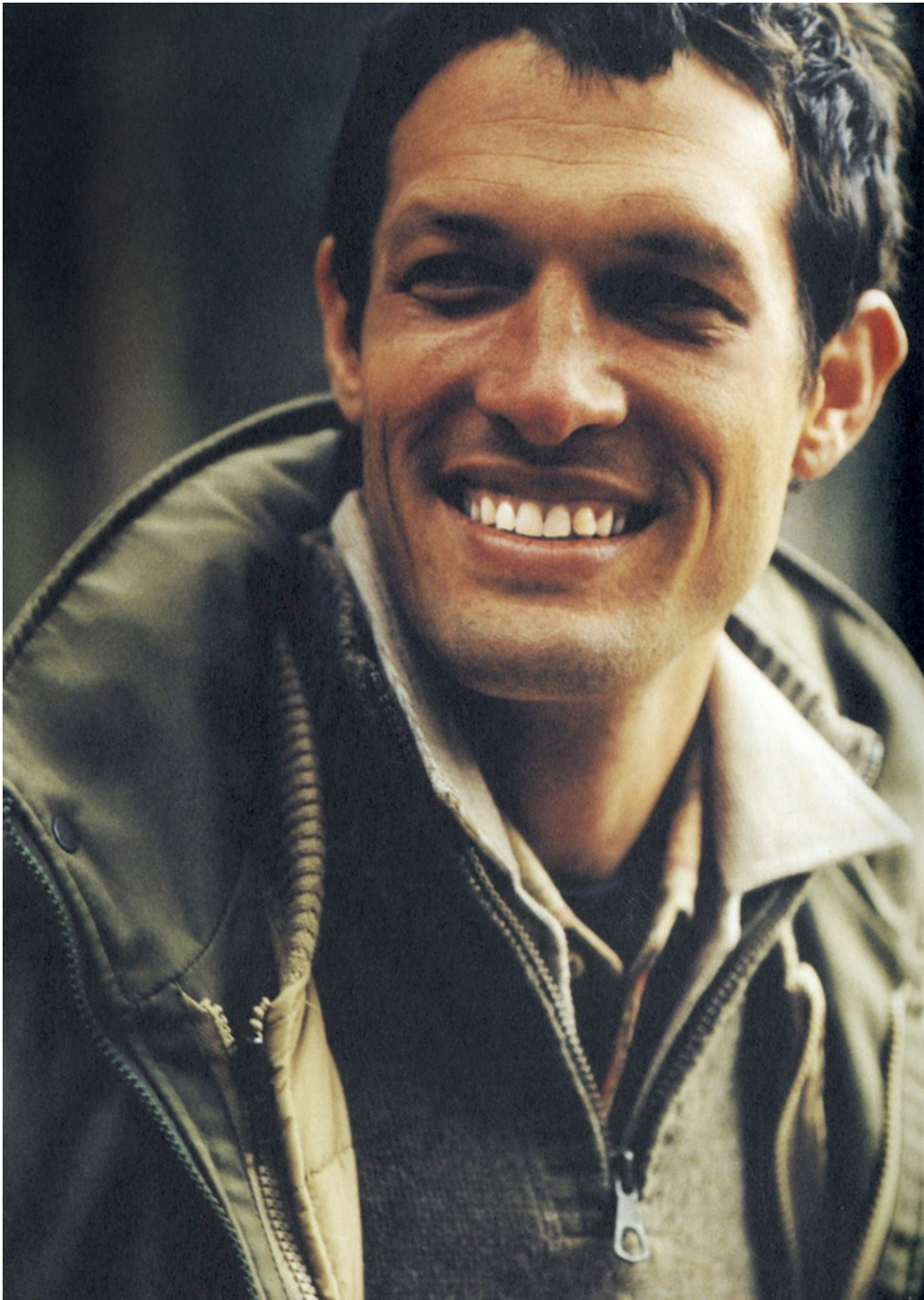
Art Department



Sandrine Van Slee

www.art-dept.com

Art Department



Sandrine Van Slee

www.art-dept.com

Art Department



Sandrine Van Slee

www.art-dept.com

Art Department



Sandrine Van Slee

www.art-dept.com

Art Department



Sandrine Van Slee

www.art-dept.com

Art Department



Sandrine Van Slee

Art Department



Sandrine Van Slee

www.art-dept.com

Art Department



Sandrine Van Slee

www.art-dept.com

Art Department



Sandrine Van Slee

www.art-dept.com

Art Department



Sandrine Van Slee

www.art-dept.com

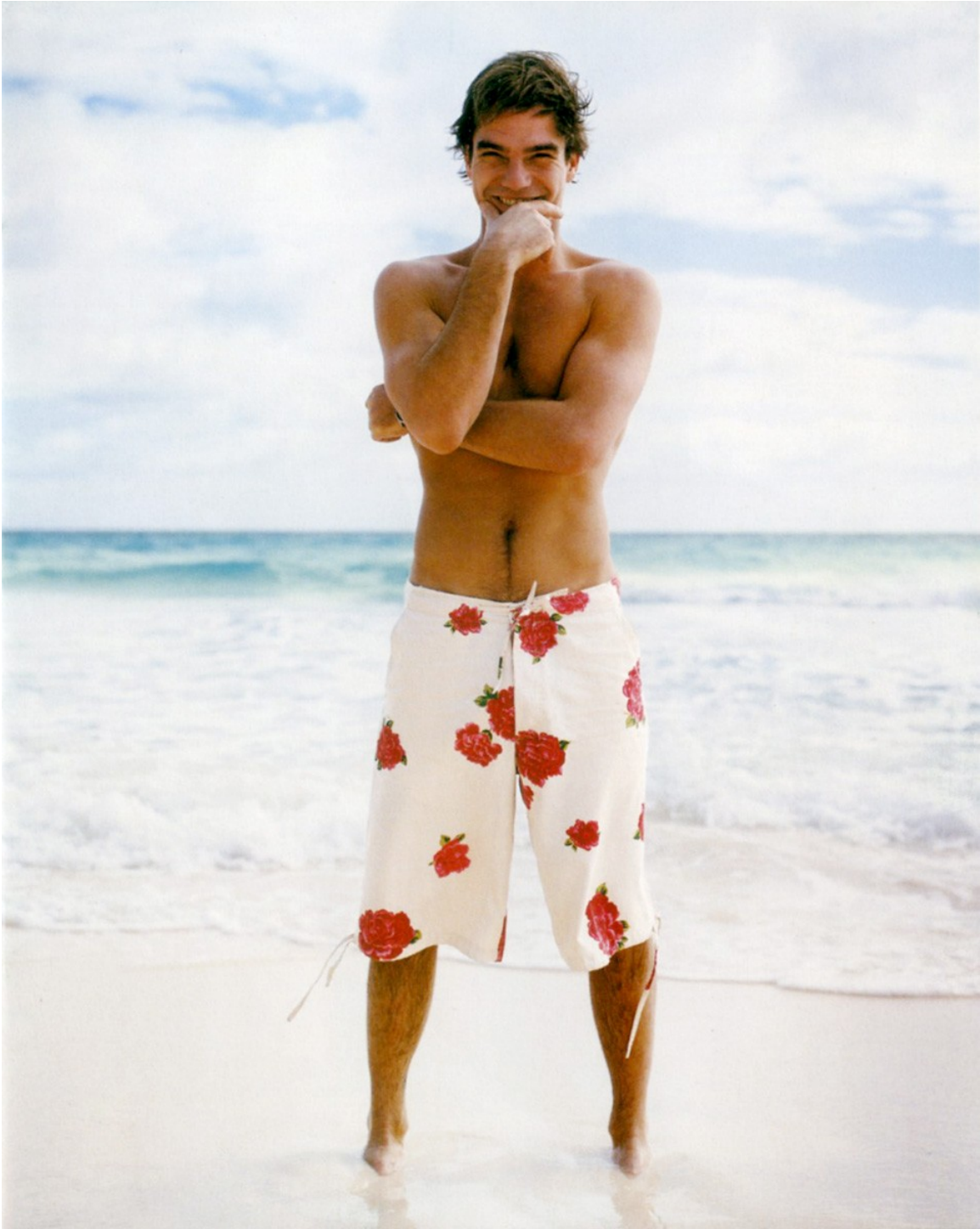
Art Department



Sandrine Van Slee

www.art-dept.com

Art Department



Sandrine Van Slee

www.art-dept.com

Art Department



Sandrine Van Slee

www.art-dept.com

Art Department



Sandrine Van Slee

www.art-dept.com

Art Department



Sandrine Van Slee

www.art-dept.com

Art Department



Sandrine Van Slee

www.art-dept.com

Art Department



Sandrine Van Slee

www.art-dept.com

Art Department



Sandrine Van Slee

www.art-dept.com

Art Department



Sandrine Van Slee

www.art-dept.com

Art Department



Sandrine Van Slee

www.art-dept.com

Art Department



Sandrine Van Slee

www.art-dept.com

Art Department



Sandrine Van Slee

www.art-dept.com

Art Department



Sandrine Van Slee

www.art-dept.com

Art Department



Sandrine Van Slee

www.art-dept.com

Art Department



Sandrine Van Slee

www.art-dept.com