

Art Department



Tam Reid

www.art-dept.com

Art Department



Tam Reid

www.art-dept.com

Art Department



Tam Reid

www.art-dept.com

Art Department



Tam Reid

www.art-dept.com

Art Department



Tam Reid

www.art-dept.com

Art Department



Tam Reid

www.art-dept.com

Art Department



There's always a better way to do things.

With 10 new high-yielding varieties for 2023, Xitavo™ soybean seed is bred tough with triple-stacked Enlist E3® technology, and backed by BASF's trusted portfolio and expert support. **Xitavo Soybean Seed. Seed done right.**

Xitavo™
Soybean Seed

Always read and follow label directions. XITAVO is a trademark of M.S. Technologies, L.L.C., West Point, IA. Enlist and the Enlist logo are trademarks of Corteva Agriscience. The transgenic event in Enlist E3 soybeans is jointly developed and owned by Corteva Agriscience LLC and M.S. Technologies, L.L.C. © 2022 BASF Corporation. All rights reserved.

Distributed by BASF Corporation

Tam Reid

www.art-dept.com

Art Department



Tam Reid

www.art-dept.com

Art Department



Tam Reid

www.art-dept.com

Art Department

Service with a style.
See how these bartenders turned their craft into art form

Brenda Terry, Tampa, FL

Greg Buda, NYC

Justin Lavenue, Austin, TX

SeongHa Lee, Las Vegas, NV

Vannaluck Hongthong, Boston, MA

Julie Anderson, San Francisco, CA

Kevih Demers, Montreal, QB

To these bartenders an empty glass is just a blank canvas; every step in the process is its own unique brush stroke. They journeyed from all over the country to the bright lights and hot nights of Las Vegas. And for 3 days they shook, stirred and muddled their way through the competition until there was only one drink left standing. They were judged on taste, presentation, and most importantly, creativity. The judges selected 7 bartenders to advance to the finals. On the final night of competition the 7 finalists created visionary cocktails made from exotic ingredients from all over the world and Bombay Sapphire Gin. In the end Justin Lavenue from Austin, TX was named the 2015 Most Imaginative Bartender with his drink The Poet's Muse. A Japanese-inspired drink that blended notes of citrus, rose, essence of mushroom and Bombay Sapphire Gin; a drink that would inspire any cocktail connoisseur to order another round.

Tam Reid

www.art-dept.com

Art Department



Tam Reid

www.art-dept.com

Art Department



Tam Reid

www.art-dept.com

Art Department



Tam Reid

www.art-dept.com

Art Department



Tam Reid

www.art-dept.com

Art Department



Tam Reid

www.art-dept.com

Art Department



Tam Reid

www.art-dept.com

Art Department



Tam Reid

www.art-dept.com

Art Department



Tam Reid

www.art-dept.com

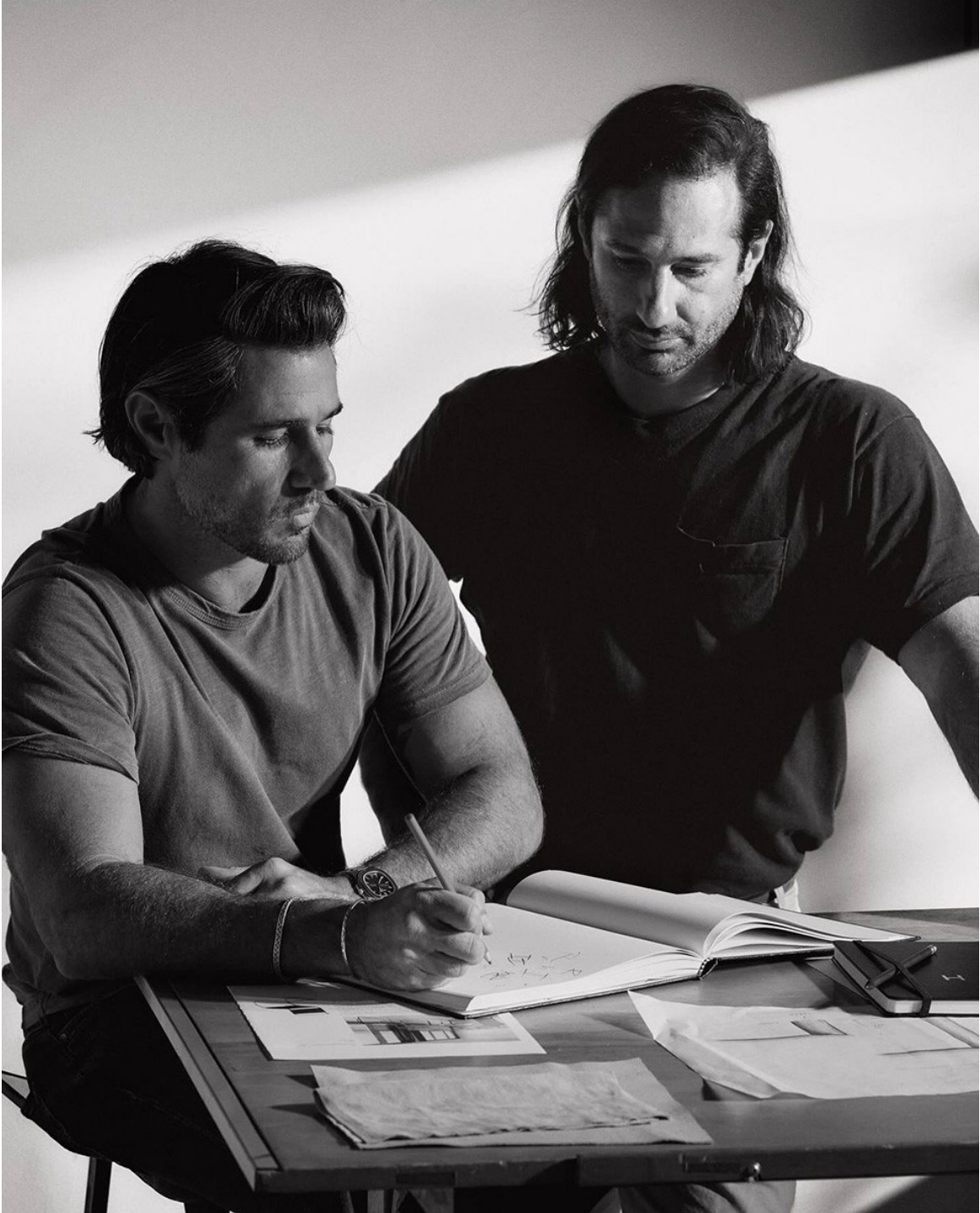
Art Department



Tam Reid

www.art-dept.com

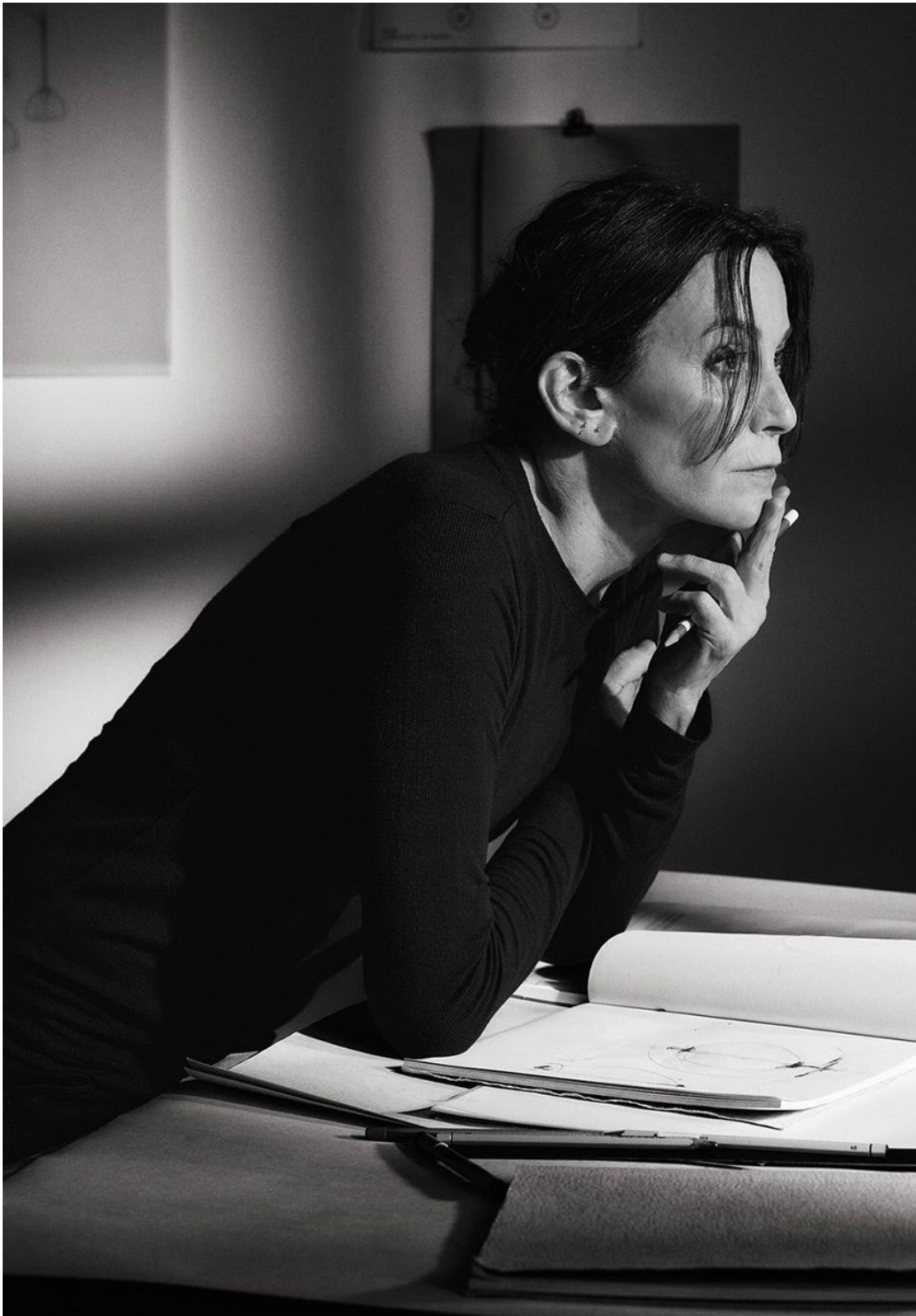
Art Department



Tam Reid

www.art-dept.com

Art Department



Tam Reid

www.art-dept.com

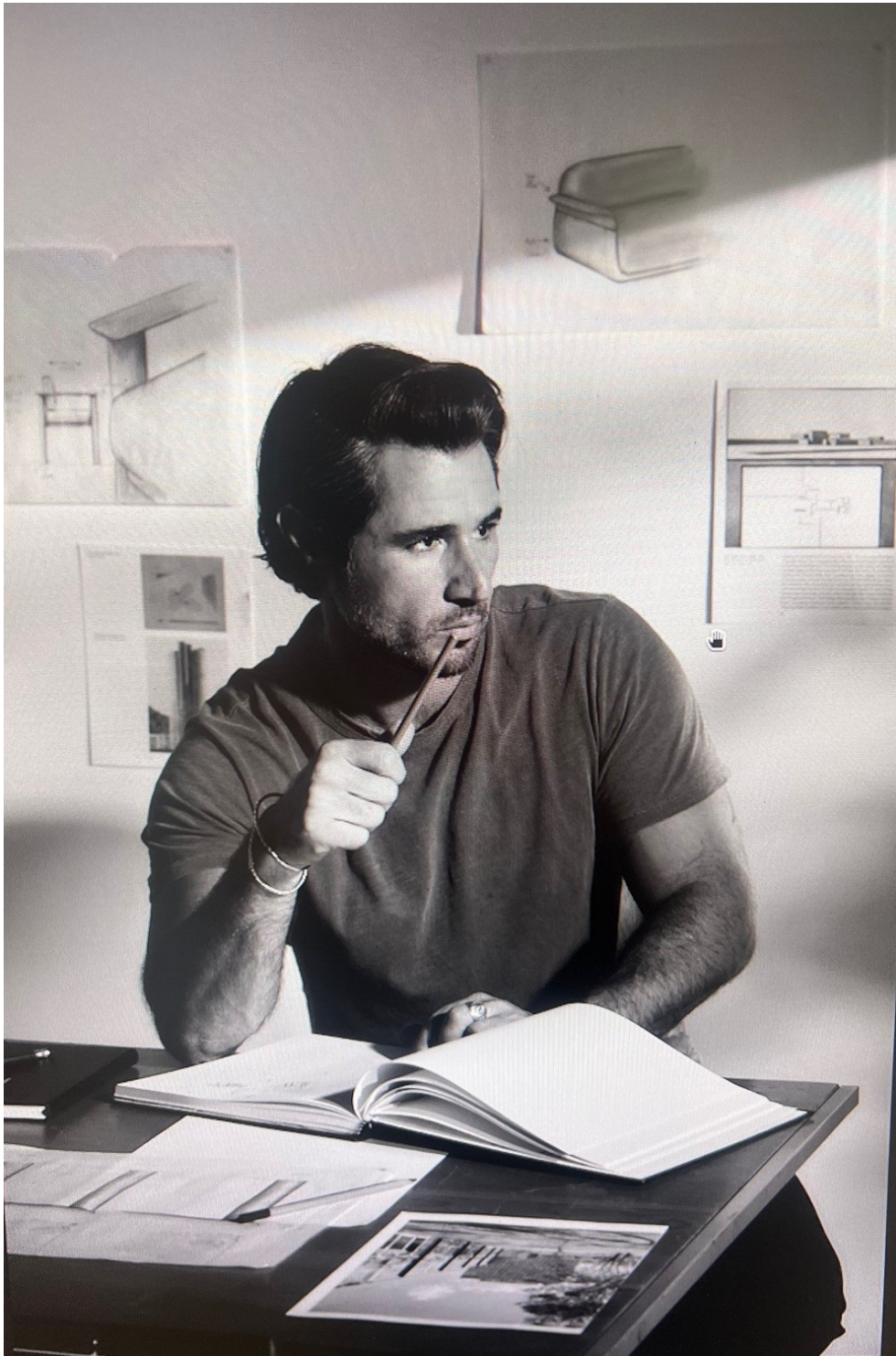
Art Department



Tam Reid

www.art-dept.com

Art Department



Tam Reid

www.art-dept.com

Art Department



Tam Reid

www.art-dept.com

Art Department



Tam Reid

www.art-dept.com

Art Department



Tam Reid

www.art-dept.com

Art Department



Tam Reid

www.art-dept.com

Art Department



Tam Reid

www.art-dept.com

Art Department

DOUBLE MILES

NOW THAT'S A WAKE UP CALL FOR MY SMALL BUSINESS.

Bjorn earns unlimited **DOUBLE MILES** on every purchase every day.

Capital One
SPARK BUSINESS
0000 1234 5678
LEE M CARDHOLDER
SMALL BUSINESS, INC.

2x MILES

Capital One

Credit approval required. Offered by Capital One Bank (USA), N.A.
©2013 Capital One.

BJORN'S BED & BREAKFAST

Tam Reid

www.art-dept.com

Art Department



WHAT DOES A LITTLE MONSTER TAKE?

A POTTY BREAK!

HEY MOM!
Use this page to play Potty Breaks peek-a-boo!

1. Fold back so "B" meets "A"
2. Share with your Big Kid
3. Make potty training fun!

Take the scare out of potty training with exclusive new Monsters U designs!
PULL-UPS.COM  

pull-Ups
FITS MORE LIKE UNDERWEAR!
Training Designs

© Registered Trademark and TM Trademark of Kimberly-Clark Worldwide, Inc. ©2013 KOWW © Disney © Disney/Pearl

Tam Reid

www.art-dept.com

Art Department



Tam Reid

www.art-dept.com

Art Department



Tam Reid

www.art-dept.com

Art Department



Tam Reid

www.art-dept.com

Art Department



Tam Reid

www.art-dept.com

Art Department



Tam Reid

www.art-dept.com

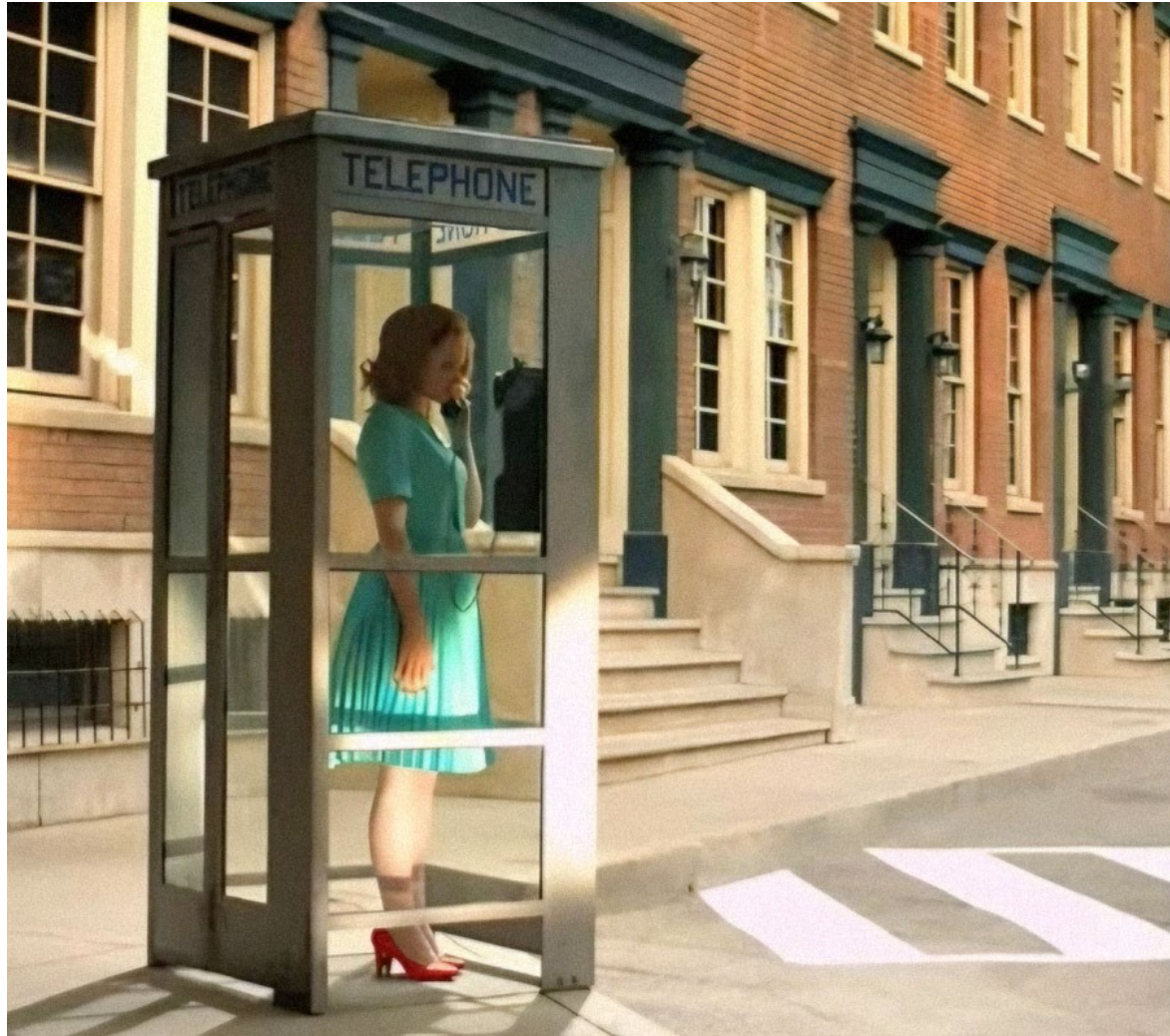
Art Department



Tam Reid

www.art-dept.com

Art Department



Tam Reid

www.art-dept.com

Art Department



Tam Reid

www.art-dept.com

Art Department



For those who constantly chase perfection, there's only one window.
Passionate about detail? Our windows and doors can keep up. You can expect furniture-quality construction, beautiful wood, plus an experience that's, well, picture perfect. Call 1-800-268-7644 or visit marvin.com

MARVIN 
Windows and Doors
Built around you.

Tam Reid

www.art-dept.com

Art Department



Use space wisely.

We started out with a simple theory: if we designed the new Reach™ workspace with walls that double as storage, people could fit a lot of stuff in there. They could access files, printers, fax machines and anything else they wanted without ever leaving their seats. The space would feel much bigger than it is. People would like that. And if we offered this system in hundreds of different colors, they would like that too. So we put our theory to the test. To see the experiment documented in a short time-lapse video, go to allsteeloffice.com.

Allsteel

Designed to work. Built to last.

Tam Reid

www.art-dept.com

Art Department



Tam Reid

www.art-dept.com

Art Department



Tam Reid

www.art-dept.com

Art Department



Tam Reid

www.art-dept.com