

# Art Department



Zac Mitchell

[www.art-dept.com](http://www.art-dept.com)

# Art Department



Zac Mitchell

[www.art-dept.com](http://www.art-dept.com)

# Art Department



Zac Mitchell

[www.art-dept.com](http://www.art-dept.com)

# Art Department



Zac Mitchell

[www.art-dept.com](http://www.art-dept.com)

# Art Department



Zac Mitchell

[www.art-dept.com](http://www.art-dept.com)

# Art Department



Zac Mitchell

[www.art-dept.com](http://www.art-dept.com)

# Art Department



Zac Mitchell

[www.art-dept.com](http://www.art-dept.com)

# Art Department



Zac Mitchell

[www.art-dept.com](http://www.art-dept.com)



# Art Department



Zac Mitchell

[www.art-dept.com](http://www.art-dept.com)

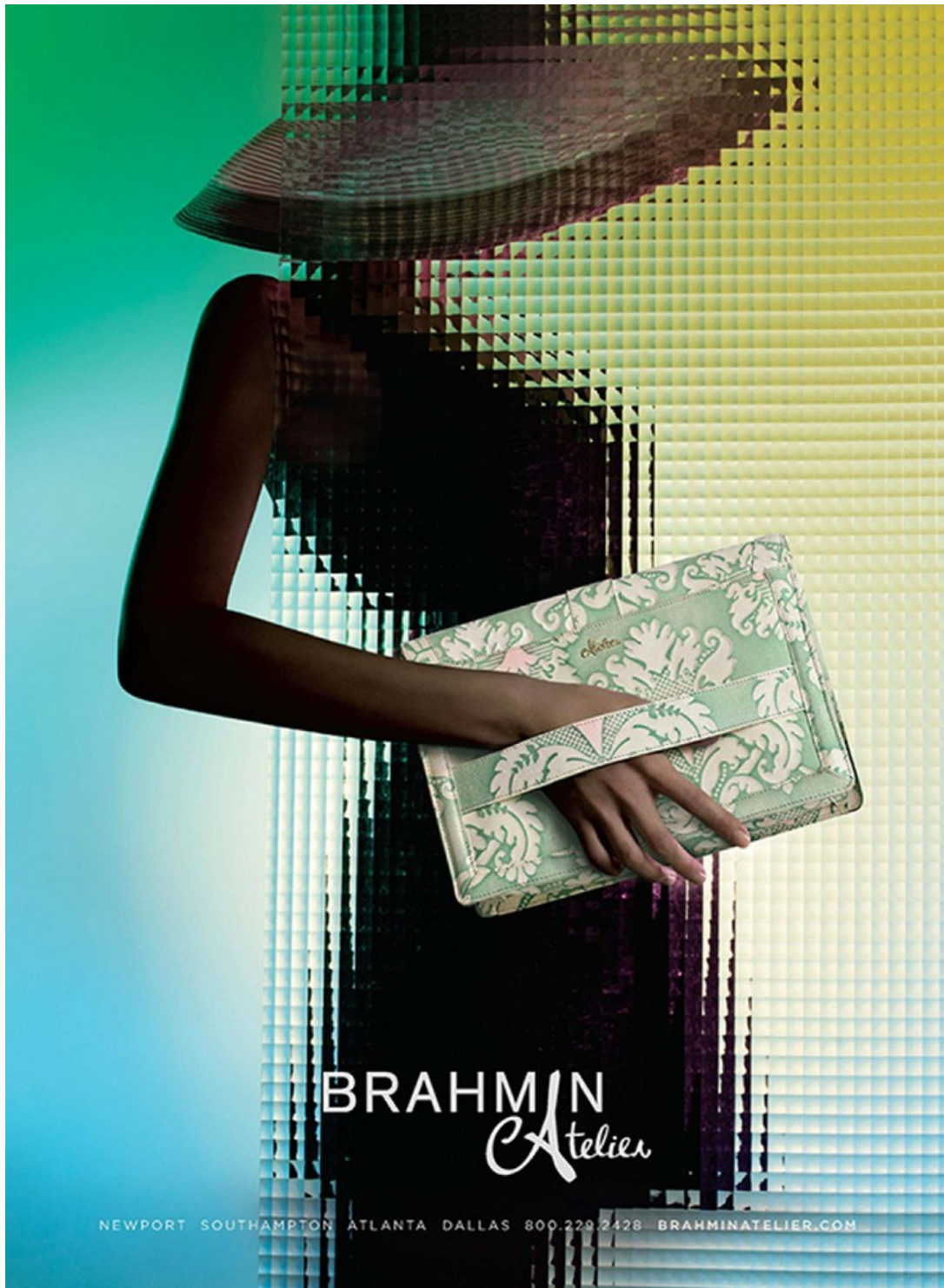
# Art Department



Zac Mitchell

[www.art-dept.com](http://www.art-dept.com)

# Art Department



Zac Mitchell

[www.art-dept.com](http://www.art-dept.com)

# Art Department



Zac Mitchell

[www.art-dept.com](http://www.art-dept.com)

# Art Department



Zac Mitchell

[www.art-dept.com](http://www.art-dept.com)

# Art Department



**BRAHMIN**  
*Redefining timeless style*

Brahmin.com 800.229.2428  
Newport | Southampton | Atlanta | Dallas

Zac Mitchell

[www.art-dept.com](http://www.art-dept.com)

# Art Department



Zac Mitchell

[www.art-dept.com](http://www.art-dept.com)

# Art Department



Zac Mitchell

[www.art-dept.com](http://www.art-dept.com)



# Art Department



Zac Mitchell

[www.art-dept.com](http://www.art-dept.com)

# Art Department



Zac Mitchell

[www.art-dept.com](http://www.art-dept.com)

# Art Department



Zac Mitchell

[www.art-dept.com](http://www.art-dept.com)

# Art Department



Zac Mitchell

[www.art-dept.com](http://www.art-dept.com)

# Art Department



Zac Mitchell

[www.art-dept.com](http://www.art-dept.com)

# Art Department



Zac Mitchell

[www.art-dept.com](http://www.art-dept.com)

# Art Department



Zac Mitchell

[www.art-dept.com](http://www.art-dept.com)

# Art Department



Zac Mitchell

[www.art-dept.com](http://www.art-dept.com)



# Art Department



Zac Mitchell

[www.art-dept.com](http://www.art-dept.com)

# Art Department



Zac Mitchell

[www.art-dept.com](http://www.art-dept.com)

# Art Department



Zac Mitchell

[www.art-dept.com](http://www.art-dept.com)

# Art Department



Zac Mitchell

[www.art-dept.com](http://www.art-dept.com)

# Art Department



Zac Mitchell

[www.art-dept.com](http://www.art-dept.com)

# Art Department



Zac Mitchell

[www.art-dept.com](http://www.art-dept.com)

# Art Department



Zac Mitchell

[www.art-dept.com](http://www.art-dept.com)

# Art Department



Zac Mitchell

[www.art-dept.com](http://www.art-dept.com)



# Art Department



Zac Mitchell

[www.art-dept.com](http://www.art-dept.com)

# Art Department



Zac Mitchell

[www.art-dept.com](http://www.art-dept.com)

# Art Department



Zac Mitchell

[www.art-dept.com](http://www.art-dept.com)

# Art Department



Zac Mitchell

[www.art-dept.com](http://www.art-dept.com)

# Art Department



Zac Mitchell

[www.art-dept.com](http://www.art-dept.com)

# Art Department



Zac Mitchell

[www.art-dept.com](http://www.art-dept.com)

# Art Department



Zac Mitchell

[www.art-dept.com](http://www.art-dept.com)

# Art Department



Zac Mitchell

[www.art-dept.com](http://www.art-dept.com)



# Art Department



Zac Mitchell

[www.art-dept.com](http://www.art-dept.com)

# Art Department



Zac Mitchell

[www.art-dept.com](http://www.art-dept.com)

# Art Department



Zac Mitchell

[www.art-dept.com](http://www.art-dept.com)

# Art Department



Zac Mitchell

[www.art-dept.com](http://www.art-dept.com)

# Art Department



Zac Mitchell

[www.art-dept.com](http://www.art-dept.com)

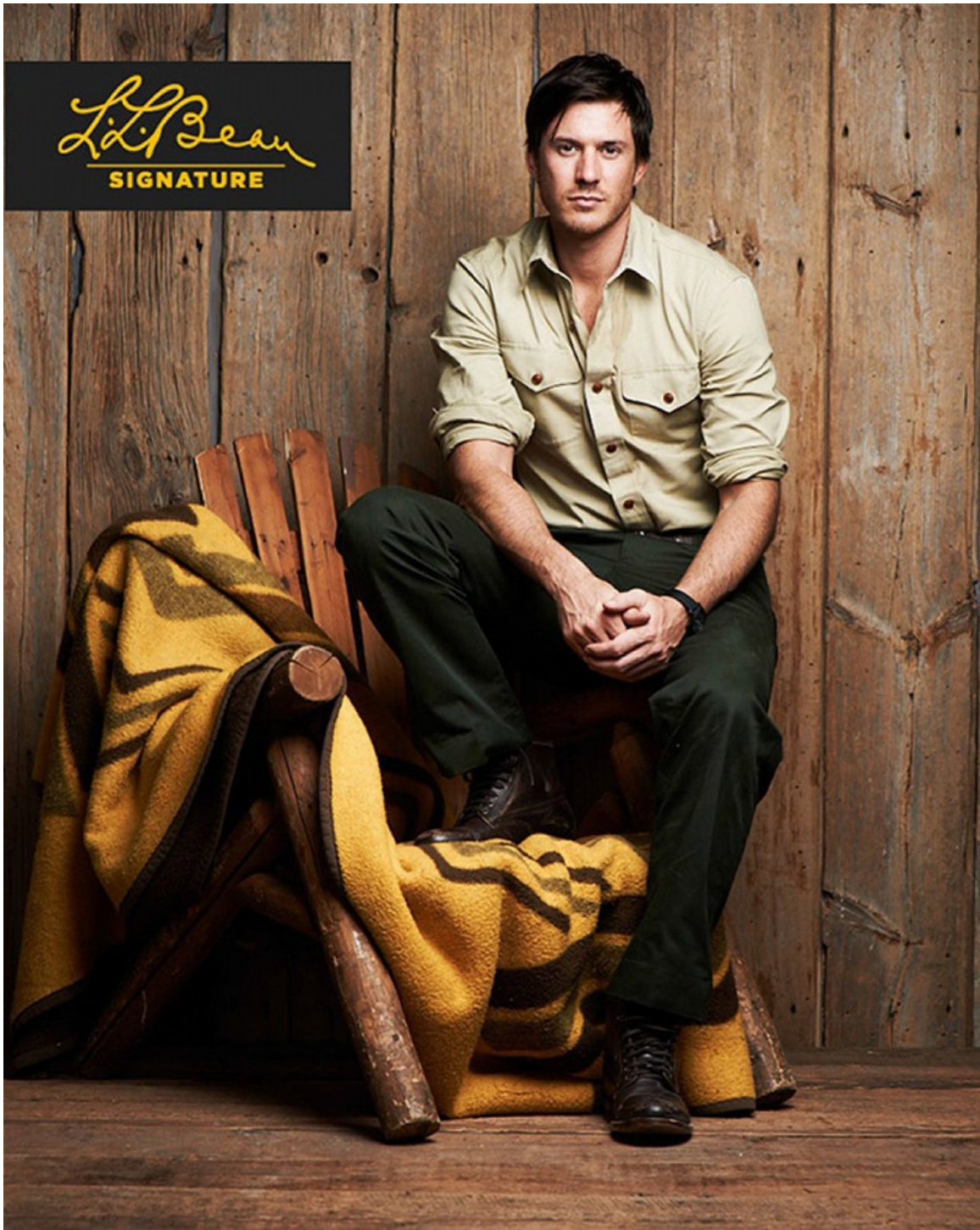
# Art Department



Zac Mitchell

[www.art-dept.com](http://www.art-dept.com)

# Art Department



Zac Mitchell

[www.art-dept.com](http://www.art-dept.com)

# Art Department



**OPPOSITE PAGE:**

**HOODED FIELD COAT**

COLOR: Marshwood. FABRIC: Cotton, Imported. Machine wash. SIZE: S-XXL. \$249 / cf275032

**WASHED TWILL CHINO SHIRT**

SEE PAGE 25

**SHORT-SLEEVE SPORT CREW**

COLOR: Gray Heather (on him, left), Antique Red (on him, right), Ebony. FABRIC: Cotton and polyester, Imported. Machine wash. SIZE: S-XXL. \$69 / cf275036

**WASHED FATIGUE SHORT**

COLOR: Pine Bark (on him), Caramel. FABRIC: Cotton, Imported. Machine wash. WAIST: Even 30-42, plus 31, 33, 35. \$59 / cf274997

**THIS PAGE:**

**FIELD CARGO SHORT**

COLOR: Dark Khaki (on him), Dark Navy. FABRIC: Cotton ripstop, Imported. Machine wash. WAIST: Even 30-42, plus 31, 33, 35. \$79 / cf274994

**BEAN'S ZIPPER DUFFEL**

COLOR: Kindling (shown), True Black. Medium and Large also in Bright Navy. MATERIAL: Waxed cotton canvas, leather handles. Imported. MEASURES: small 8 1/2" H x 16" W x 7 1/4" D, medium 12 1/2" H x 25" W x 12 1/2" D, large 14 1/2" H x 27" W x 14 1/2" D. \$125 / small / cf272945. \$150 / medium / cf270232. \$175 / large / cf266751. MEDIUM IN KINDLING NOT AVAILABLE.

**WAXED CANVAS MAINE HUNTING SHOE\***

COLOR: Marsh Brown/Brown (on him), Navy/Brown, Deep Forest/Brown. MATERIAL: Waxed canvas upper. Made in Maine. WHOLE SIZE: Medium D 7-14. \$139 / cf262905

## Zac Mitchell

[www.art-dept.com](http://www.art-dept.com)



# Art Department



**THIS PAGE:**  
**CHAMBRAY SHIRT**  
COLOR: Dark Indigo. FABRIC: Cotton chambray. Imported. Machine wash. SIZE: S-XXL.  
\$69 / cf275282

**SIGNATURE BELT**  
SEE ONLINE

**WASHED FATIGUE PANT**  
COLOR: Pine Bark (on him), Caramel. FABRIC: Cotton. Imported. Machine wash. WAIST: Even 30-42, plus 31, 33, 35. INSEAM: 29", 32", 34", 36". 36" inseams only available in 34 waist and larger.  
\$69 / cf276132

**LEATHER MAINE HUNTING SHOE**  
COLOR: Brown/Brown. MATERIAL: Leather. Made in Maine. Measures 12" in height. WHOLE SIZE: Medium D 7-14.  
\$185 / cf272944

**OPPOSITE PAGE:**  
**EASTPORT HANDSEWN BLUCHER MOC, RANGER MOC AND RANGER BOOT**  
COLOR: Brown (shown in Ranger Moc), Black. MATERIAL: Leather. Imported. SIZE: Medium D 7-12, 13, 14.  
\$69 / blucher moc / cf262923  
\$79 / ranger moc / cf262949  
\$99 / ranger boot / cf270122  
*BLUCHER MOC IN BROWN NOT AVAILABLE*

**SIGNATURE FIELD WATCH**  
COLOR: Black. MATERIAL: Nylon straps with leather backing. Made in Switzerland. One size.  
\$129 / cf276039

**VINTAGE METAL FIELD WATCH**  
COLOR: Silver (shown), Gold. MATERIAL: Polished brushed metal, stainless-steel case. Made in Switzerland. One size.  
\$225 / cf270171

**CANVAS WORK JACKET**  
COLOR: Saddle. FABRIC: Cotton. Imported. Machine wash. SIZE: S-XXL.  
\$129 / cf275033

**HUNTER'S PLAID SHIRT**  
COLOR: Royal Blue/Adobe Red (on him), Mountain Blue. FABRIC: Cotton. Imported. Machine wash. SIZE: S-XXL.  
\$69 / cf266777

© LLBEANSIGNATURE.COM / 800-650-5975

## Zac Mitchell

www.art-dept.com

# Art Department



Zac Mitchell

[www.art-dept.com](http://www.art-dept.com)

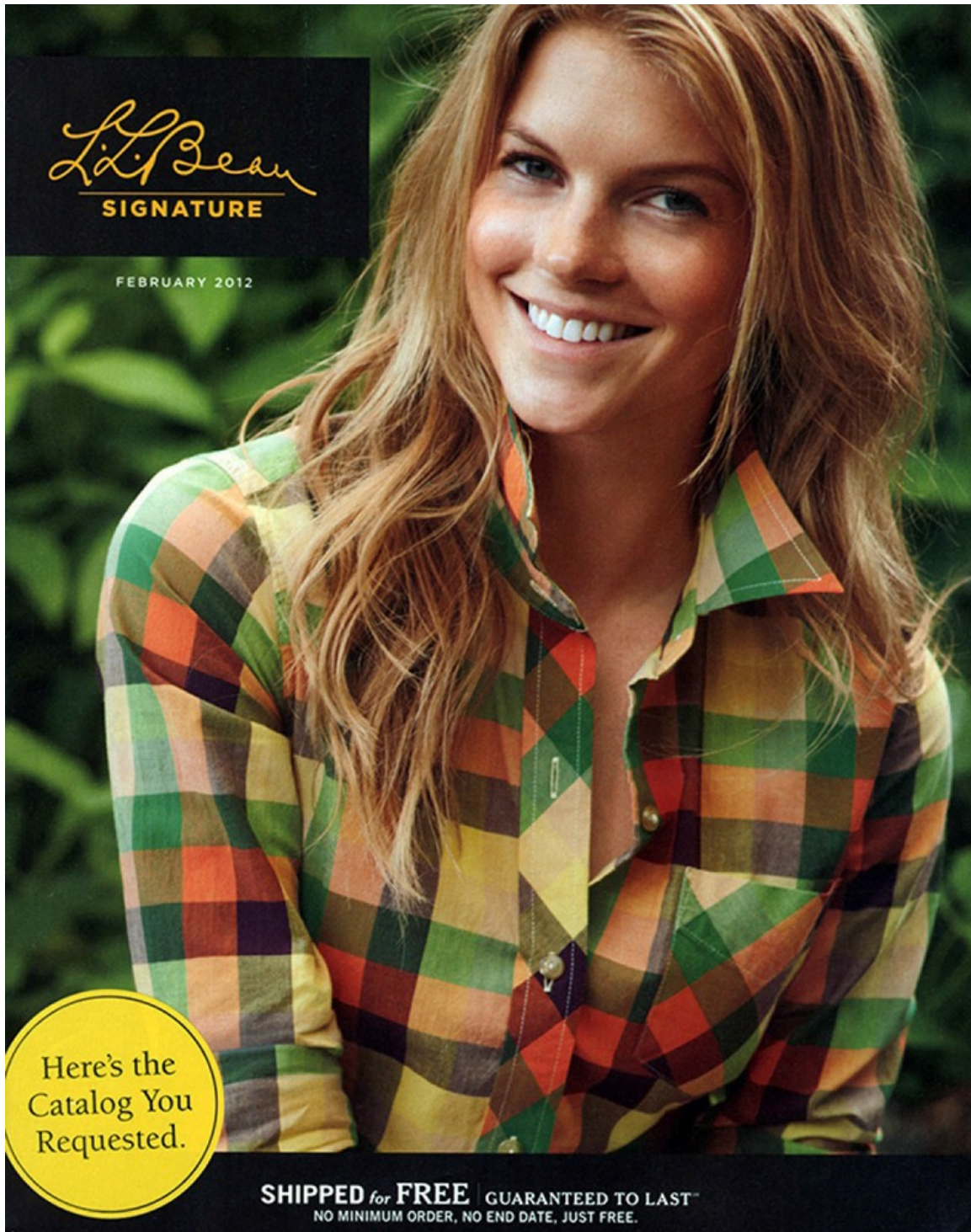
# Art Department



Zac Mitchell

[www.art-dept.com](http://www.art-dept.com)

# Art Department



L.L. Bean  
SIGNATURE

FEBRUARY 2012

Here's the  
Catalog You  
Requested.

SHIPPED for FREE | GUARANTEED TO LAST™  
NO MINIMUM ORDER, NO END DATE, JUST FREE.

Zac Mitchell

[www.art-dept.com](http://www.art-dept.com)


# Art Department



Zac Mitchell

[www.art-dept.com](http://www.art-dept.com)

# Art Department



FREE \$10  
GIFT CARD  
WITH PURCHASE  
OF \$50 OR MORE  
SEE PAGE 2

*L.L. Bean*

**SIGNATURE**

**N° 1** | OUR SIGNATURE MARKS A NEW COLLECTION | **SPRING**  
2010

Zac Mitchell

[www.art-dept.com](http://www.art-dept.com)

# Art Department



Zac Mitchell

[www.art-dept.com](http://www.art-dept.com)

# Art Department

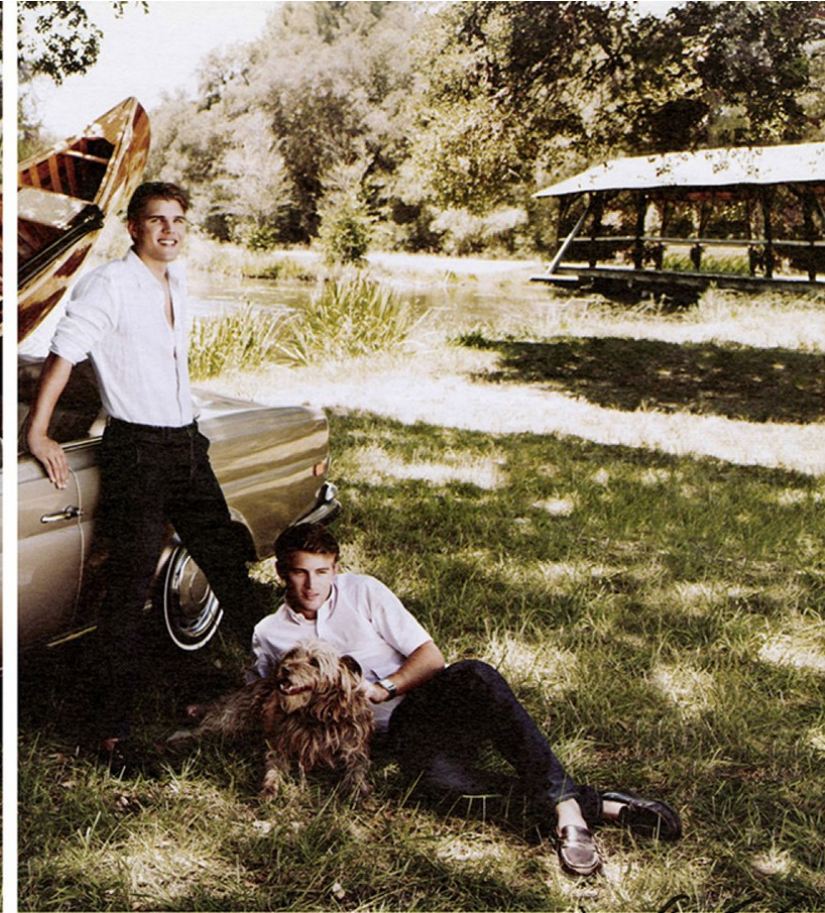


Zac Mitchell

[www.art-dept.com](http://www.art-dept.com)



# Art Department



*Ward + Taylor*

Zac Mitchell

[www.art-dept.com](http://www.art-dept.com)

# Art Department

**crewcuts**  
for ages 2-10.

MAKE YOUR LIST. check it twice...  
something for the little ones,  
naughty and nice... something for  
everyone at [crewcutkids.com](http://crewcutkids.com).

**LOOK 1**  
cotton-cashmere cardigan  
Cotton-cashmere cardigan. Imported. Depot. 40-XXL.  
\$125.00 \$65.00

**LOOK 2**  
rightweight flannel shirt  
Rightweight flannel shirt. Imported. Depot. 40-XXL.  
\$33.00 \$19.00

**LOOK 3**  
solid wool dress pant  
Solid wool dress pant. Imported. Depot. 2-8, 10-12.  
\$74.00 \$36.00

**LOOK 4**  
cashmere baby dress  
Cashmere baby dress.  
Soft, luxurious. Made in Italy. Imported. Depot.  
20-30. \$100.00 \$19.00

**LOOK 5**  
polka-dot earflap hat  
Polka-dot earflap hat. Imported. Depot. 2-8, 10-12.  
\$18.00 \$10.00

**LOOK 6**  
grey wool legacy jacket  
Grey wool legacy jacket. Imported. Depot. 40-XXL.  
\$145.00 \$75.00

**LOOK 7**  
secret wash banker-stripe shirt  
Secret wash banker-stripe shirt. Imported. Depot. 40-XXL.  
\$39.00 \$21.00

**LOOK 8**  
paint-splatter jean  
Paint-splatter jean. Imported. Depot. 2-8, 10-12.  
\$58.00 \$31.00

**LOOK 9**  
black watch tweed jacket  
Black watch tweed jacket. Imported. Depot. 40-XXL.  
\$112.00 \$58.00

**LOOK 10**  
cashmere v-neck sweater  
Cashmere v-neck sweater. Imported. Depot. 40-XXL.  
\$70.00 \$38.00

**LOOK 11**  
banker-stripe oxford shirt  
Banker-stripe oxford shirt. Imported. Depot. 40-XXL.  
\$34.00 \$19.00

**LOOK 12**  
wool herringbone suit pant  
Wool herringbone suit pant. Imported. Depot. 2-8, 10-12.  
\$100.00 \$55.00

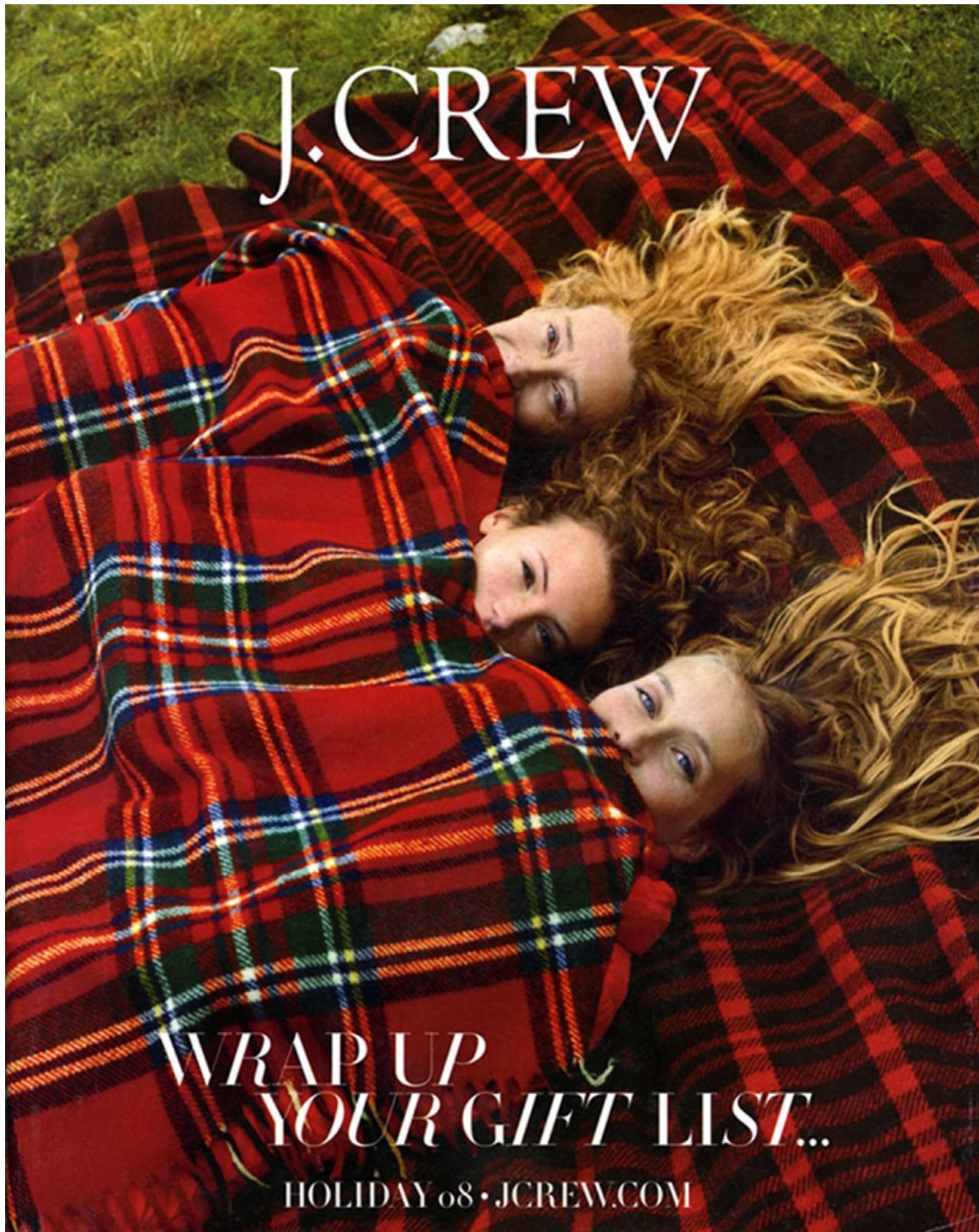
**LOOK 13**  
brown dot jack purcell sneakers  
Brown dot jack purcell sneakers. Imported. Depot. 2-8, 10-12.  
\$35.00 \$19.00

© 2011 crewcutkids.com

Zac Mitchell

[www.art-dept.com](http://www.art-dept.com)

# Art Department



Zac Mitchell

[www.art-dept.com](http://www.art-dept.com)

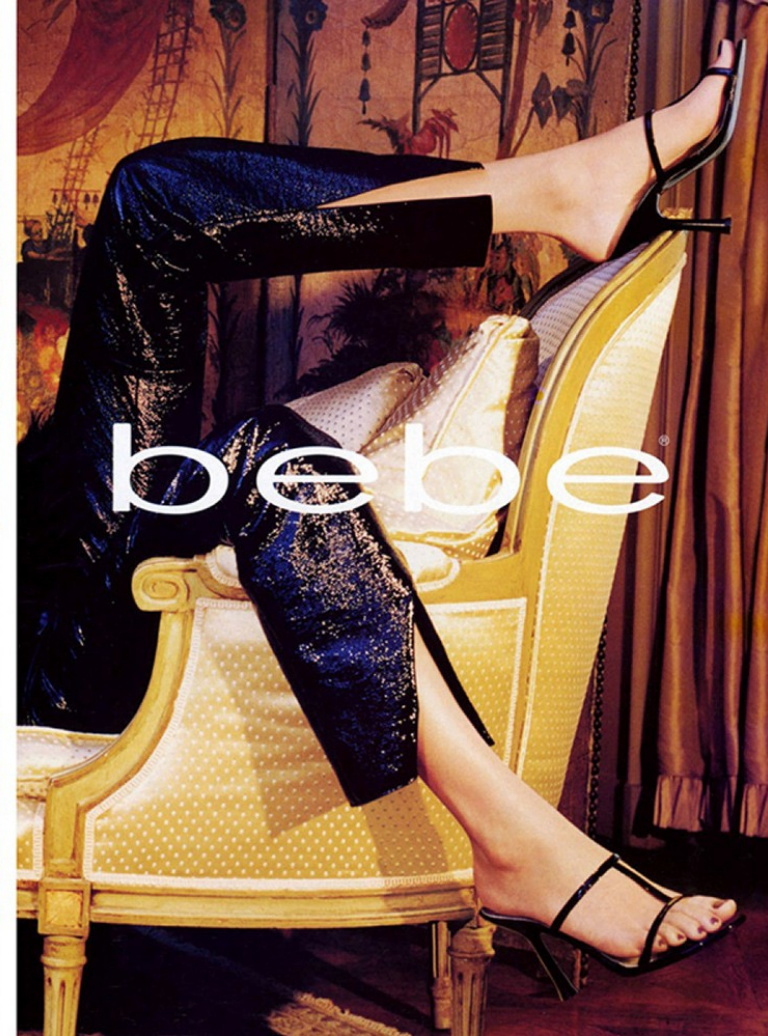
# Art Department



Zac Mitchell

[www.art-dept.com](http://www.art-dept.com)

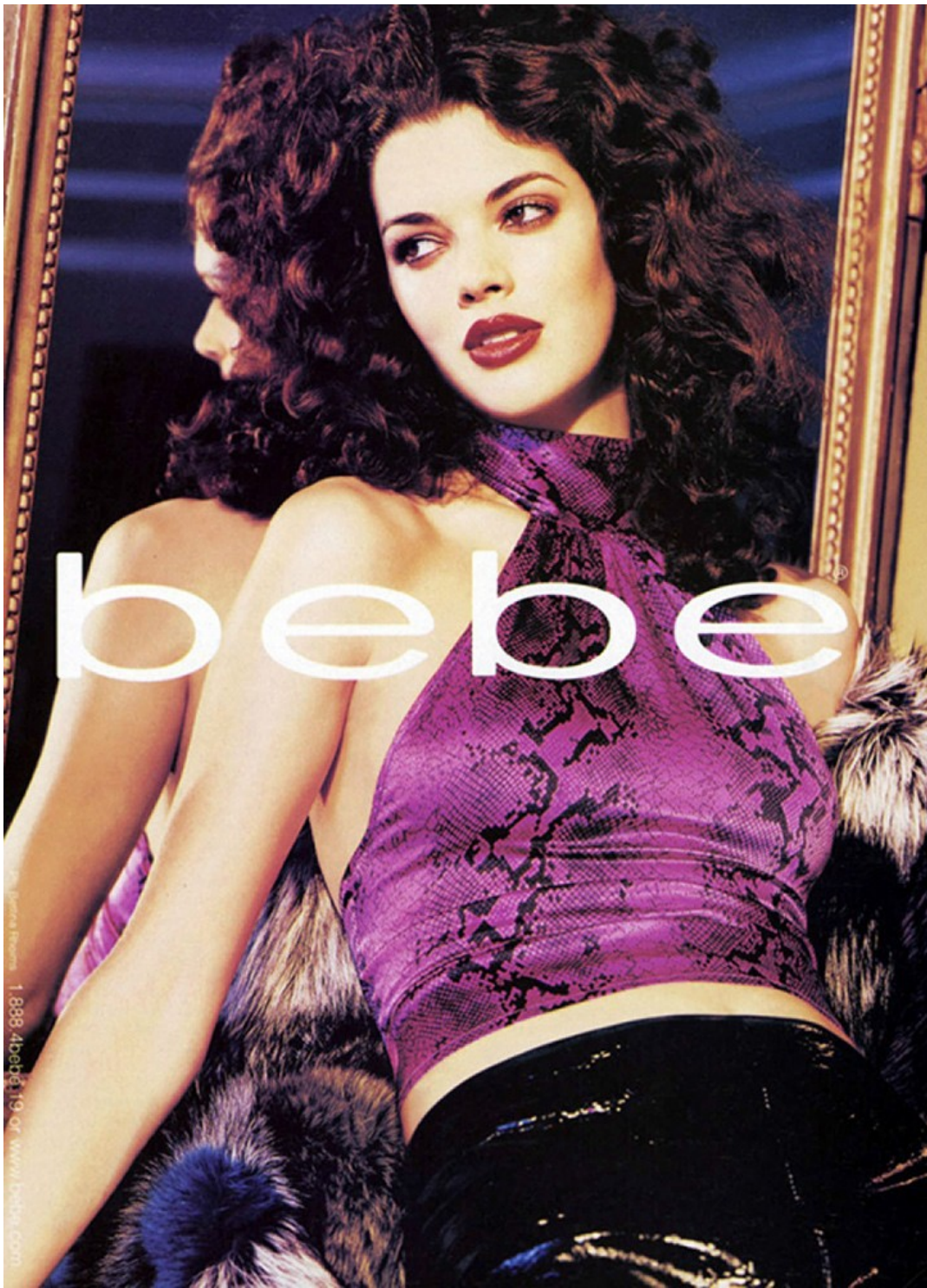
# Art Department



Zac Mitchell

[www.art-dept.com](http://www.art-dept.com)

# Art Department



Zac Mitchell

[www.art-dept.com](http://www.art-dept.com)

# Art Department



Zac Mitchell

[www.art-dept.com](http://www.art-dept.com)

# Art Department



Zac Mitchell

[www.art-dept.com](http://www.art-dept.com)



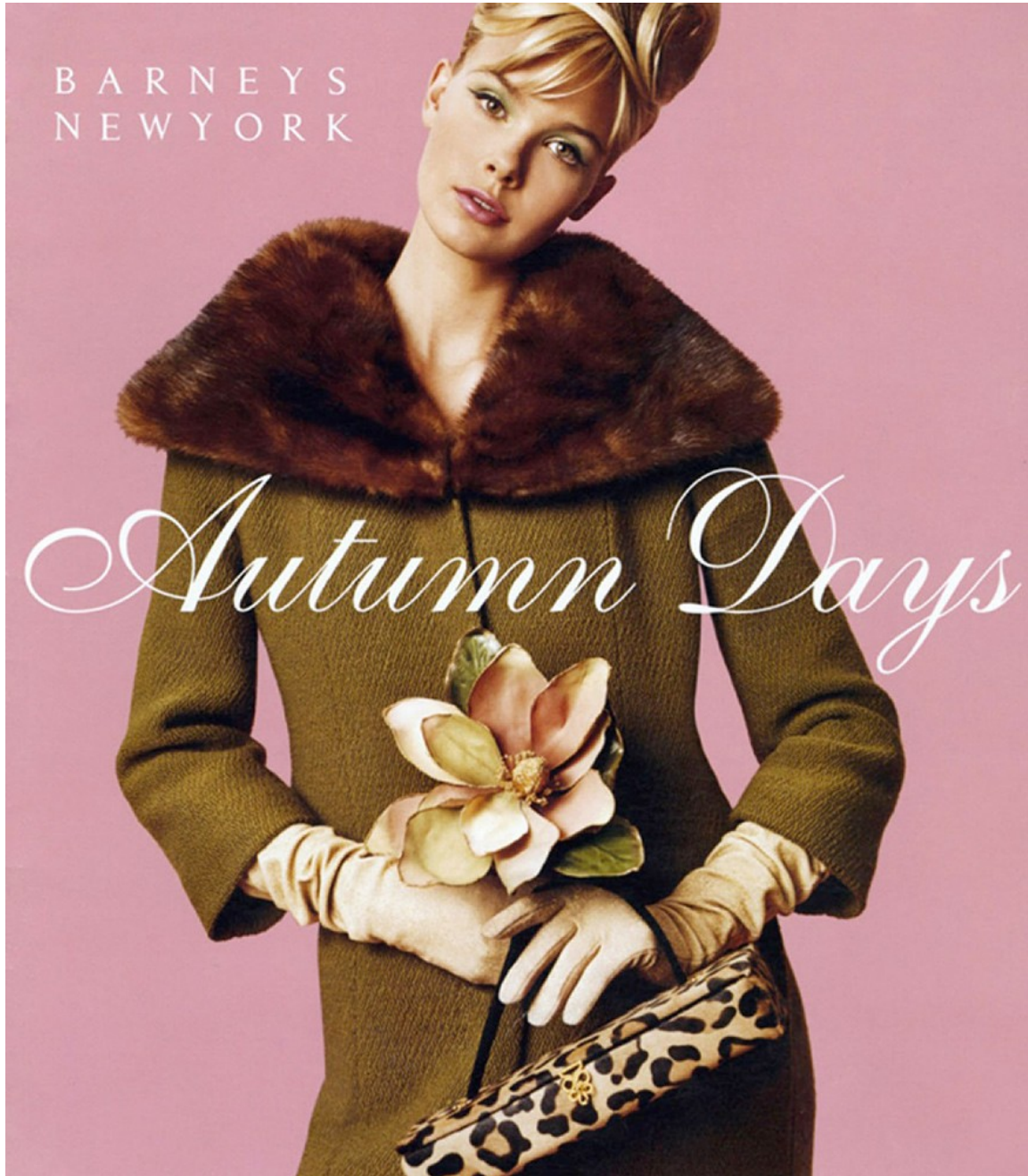
# Art Department



Zac Mitchell

[www.art-dept.com](http://www.art-dept.com)

# Art Department



Zac Mitchell

[www.art-dept.com](http://www.art-dept.com)

# Art Department



Zac Mitchell

[www.art-dept.com](http://www.art-dept.com)

# Art Department



Zac Mitchell

[www.art-dept.com](http://www.art-dept.com)

# Art Department



Zac Mitchell

[www.art-dept.com](http://www.art-dept.com)

# Art Department



happy to unwind

thermos®  
14000 gas grill 139.99  
mosaic bistro table and  
(2) chair set 149.99  
decorative cranes  
39.99

copper finish  
oil lamps 9.99  
fire bowl 59.99  
fire pit bench 29.99  
string lights 8.88  
copper finish torch  
light 14.99

happy  
inside



shop in-store or online  
at target.com

## Zac Mitchell

[www.art-dept.com](http://www.art-dept.com)

# Art Department



happy  
to dash

burnt rattan  
accent furniture collection:  
folding screen 79.99  
plant stand 39.99  
bench with 2 drawers 99.99  
Metropolis phone  
19.99

green planter 14.99  
Global Influences  
chest 14.99  
framed art 29.99  
mimo table lamp  
24.99

happy  
inside



shop in-store or online  
at target.com

## Zac Mitchell

[www.art-dept.com](http://www.art-dept.com)

# Art Department



Zac Mitchell

[www.art-dept.com](http://www.art-dept.com)



# Art Department



Zac Mitchell

[www.art-dept.com](http://www.art-dept.com)

# Art Department



Zac Mitchell

[www.art-dept.com](http://www.art-dept.com)