

Art Department



Natalie Shriver

www.art-dept.com

Art Department



Natalie Shriver

www.art-dept.com

Art Department



Natalie Shriver

www.art-dept.com

Art Department



Natalie Shriver

www.art-dept.com

Art Department



Natalie Shriver

www.art-dept.com

Art Department



Natalie Shriver

www.art-dept.com

Art Department



Natalie Shriver

www.art-dept.com

Art Department



Natalie Shriver

www.art-dept.com

Art Department



Natalie Shriver

www.art-dept.com

Art Department



Natalie Shriver

www.art-dept.com

Art Department



Natalie Shriver

www.art-dept.com

Art Department



Natalie Shriver

www.art-dept.com

Art Department



Natalie Shriver

www.art-dept.com

Art Department



Natalie Shriver

www.art-dept.com

Art Department



Natalie Shriver

www.art-dept.com

Art Department



Natalie Shriver

www.art-dept.com

Art Department



Natalie Shriver

www.art-dept.com

Art Department

[SHOES]

"a menswear-inspired oxford,
a pretty lace dress.
it's boy meets girl,
in a fashion sense."



COLE HAAN
"Gramercy" oxford, soft
nubuck upper, leather
lining and EVA outsole,
rooftop/sunlight or
sandstone/orange
pop, imported, 5-11b,
618334 \$198
Women's Shoes

Natalie Shriver

www.art-dept.com

Art Department



Natalie Shriver

www.art-dept.com

Art Department



Natalie Shriver

www.art-dept.com

Art Department



Natalie Shriver

www.art-dept.com

Art Department



Natalie Shriver

www.art-dept.com

Art Department



Natalie Shriver

www.art-dept.com

Art Department

VINCE CAMUTO
"Hallee" pointy-toe
pump, coral or
peacock smooth
leather, or mixed
party snake-
embossed leather,
imported. 4-12M.
620976 \$97.95
Women's Shoes.



"these pointy-toe pumps are perfect for spring.
ideal for a day at the office...and after."

Natalie Shriver

www.art-dept.com

Art Department



Natalie Shriver

www.art-dept.com

Art Department



Natalie Shriver

www.art-dept.com

Art Department



Natalie Shriver

www.art-dept.com

Art Department



Do the d'Orsay.
A cooler take on the classic, now with the midi heel and a leg-lengthening mix of tan and shine.

ENZO ANGIOLINI
GABRINO TWO-PIECE
PUMP. Leather upper.
Natural/taupe (metallic
back), also in black/pewter
(snakeskin-embossed back)
or ivory/black (snakeskin-
embossed front). Imported.
4-11.5M. **949841 \$98.95**
Women's Shoes.

BROWSE, SHOP, GET INSPIRED—ON THE GO | DOWNLOAD OUR FREE APPS FOR IPHONE, IPAD AND ANDROID | 59

Natalie Shriver

www.art-dept.com

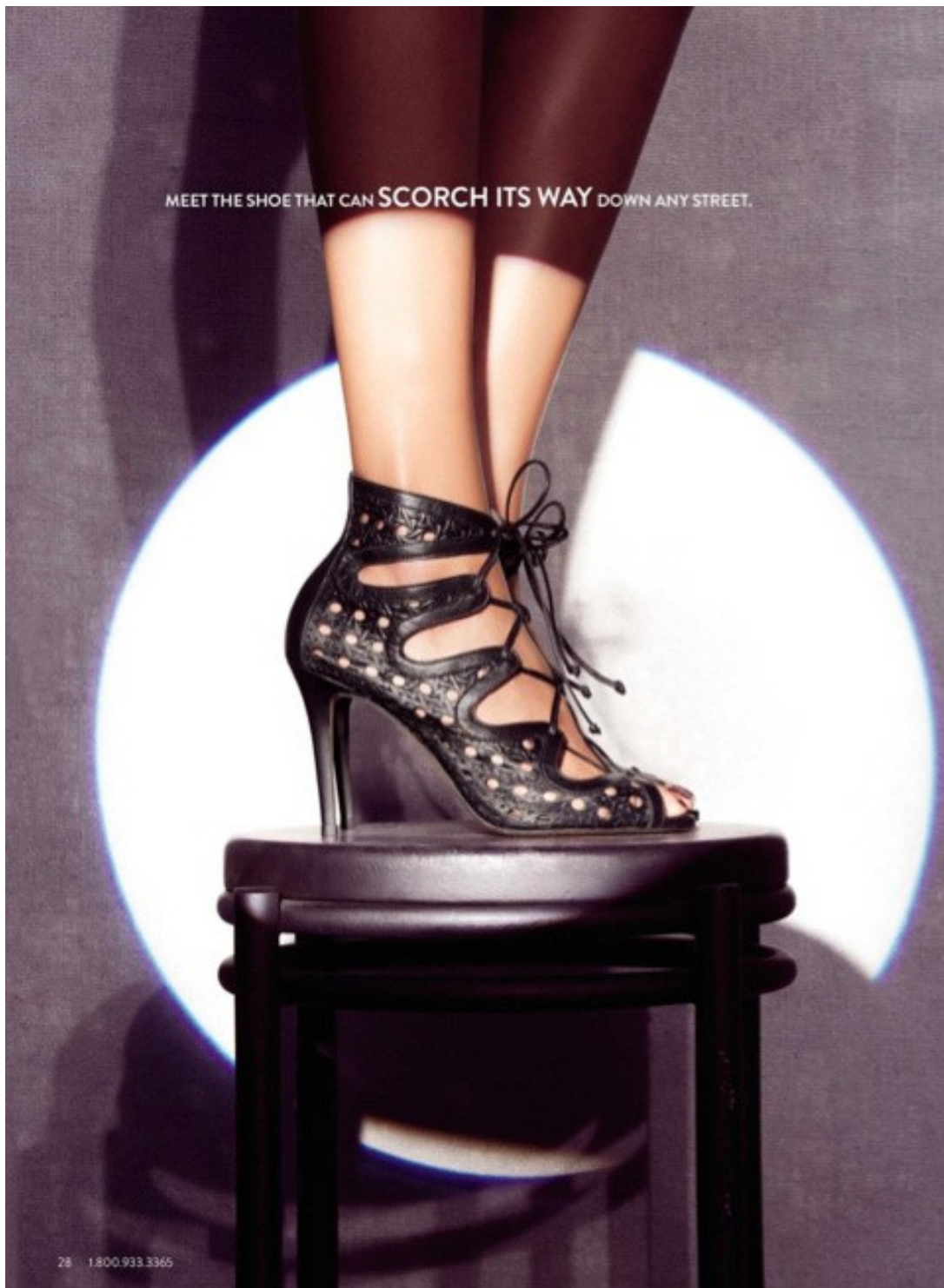
Art Department



Natalie Shriver

www.art-dept.com

Art Department



Natalie Shriver

www.art-dept.com

Art Department



Natalie Shriver

www.art-dept.com

Art Department

Power up a lean cropped pant with this **chic collision** of silver and suede.



Natalie Shriver

www.art-dept.com

Art Department



Natalie Shriver

www.art-dept.com

Art Department



Natalie Shriver

www.art-dept.com

Art Department



Natalie Shriver

www.art-dept.com

Art Department



Natalie Shriver

www.art-dept.com

Art Department



Natalie Shriver

www.art-dept.com

Art Department



Natalie Shriver

www.art-dept.com

Art Department

BURBERRY WATCHES
Swiss-made watches with sunray dials that feature the signature Burberry Check design.

34 mm, gold-tone plating/stainless steel, gold. 532041 \$650
26 mm with gold stick indexes, gold-tone plating/stainless steel, gold. 543986 \$600

34 mm, stainless steel. 532041 \$495
26 mm with diamond indexes, stainless steel/diamonds (0.058 ct. t.w.), silver. 584975 \$795

34 mm, rose gold-tone plating/stainless steel, rose gold/silver. 532041 \$595
26 mm with diamond indexes, rose gold-tone plating/stainless steel/diamonds (0.058 ct. t.w.), rose gold/silver. 584975 \$895

Fashion Jewelry.



FOR MORE FROM
BURBERRY,
VISIT NORDSTROM.COM.

Virtual gift giving. Go to nordstrom.com to email a Nordstrom e-Gift Card, instantly. 774

Natalie Shriver

www.art-dept.com

Art Department



Natalie Shriver

www.art-dept.com

Art Department



Natalie Shriver

www.art-dept.com

Art Department



Natalie Shriver

www.art-dept.com

Art Department



Natalie Shriver

www.art-dept.com

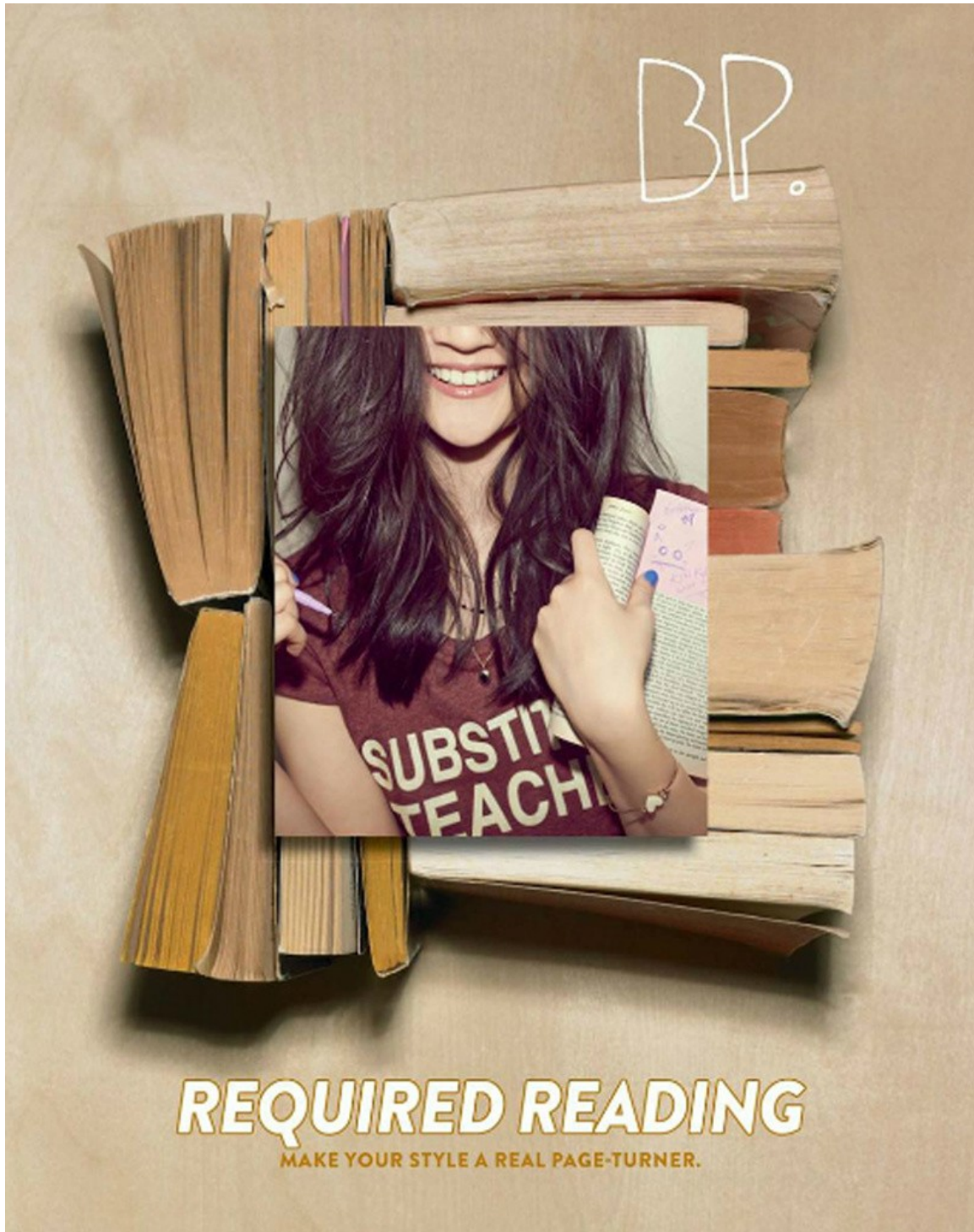
Art Department



Natalie Shriver

www.art-dept.com

Art Department



Natalie Shriver

www.art-dept.com

Art Department



Natalie Shriver

www.art-dept.com

Art Department



Natalie Shriver

www.art-dept.com

Art Department



Natalie Shriver

www.art-dept.com

Art Department



Natalie Shriver

www.art-dept.com

Art Department



Natalie Shriver

www.art-dept.com

Art Department



Natalie Shriver

www.art-dept.com

Art Department



Natalie Shriver

www.art-dept.com

Art Department



Natalie Shriver

www.art-dept.com

Art Department



Natalie Shriver

www.art-dept.com

Art Department



Natalie Shriver

www.art-dept.com

Art Department



Natalie Shriver

www.art-dept.com

Art Department



Natalie Shriver

www.art-dept.com

Art Department



Natalie Shriver

www.art-dept.com

Art Department



Natalie Shriver

www.art-dept.com

Art Department



Natalie Shriver

www.art-dept.com

Art Department



Natalie Shriver

www.art-dept.com

Art Department



Natalie Shriver

www.art-dept.com

Art Department



Natalie Shriver

www.art-dept.com

Art Department



Natalie Shriver

www.art-dept.com

Art Department



Natalie Shriver

www.art-dept.com

Art Department



Natalie Shriver

www.art-dept.com

Art Department



Natalie Shriver

www.art-dept.com

Art Department



Natalie Shriver

Art Department



Natalie Shriver

www.art-dept.com

Art Department



Natalie Shriver

www.art-dept.com

Art Department



Natalie Shriver

www.art-dept.com

Art Department



Natalie Shriver

www.art-dept.com

Art Department



Natalie Shriver

www.art-dept.com

Art Department



Natalie Shriver

www.art-dept.com

Art Department



Natalie Shriver

www.art-dept.com

Art Department



Natalie Shriver

www.art-dept.com

Art Department



Natalie Shriver

www.art-dept.com

Art Department



Natalie Shriver

www.art-dept.com