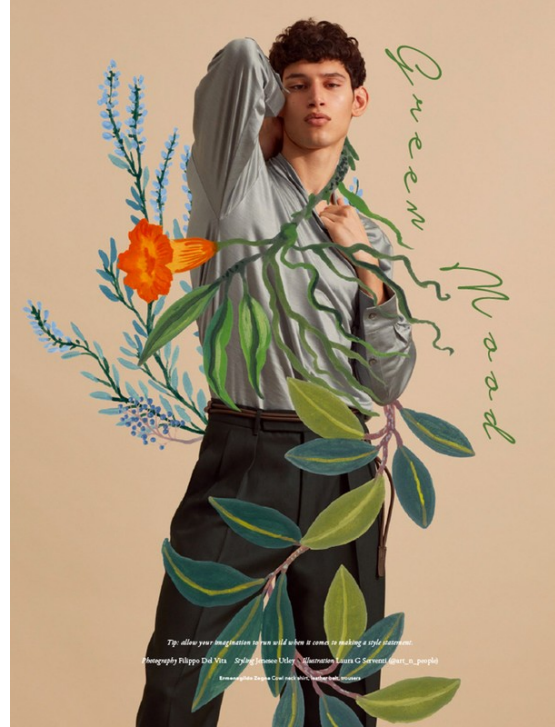


# Art Department



Jenese Utley



# Art Department



Jenese Utle

[www.art-dept.com](http://www.art-dept.com)

# Art Department



Jenese Utley

[www.art-dept.com](http://www.art-dept.com)



# Art Department

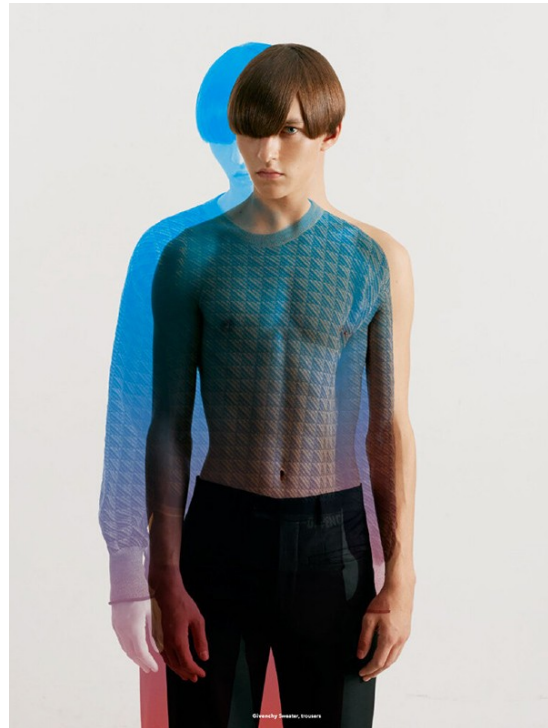


Jenese Utle

[www.art-dept.com](http://www.art-dept.com)



# Art Department



Jenese Utle

[www.art-dept.com](http://www.art-dept.com)

# Art Department



Jenese Utley

[www.art-dept.com](http://www.art-dept.com)



# Art Department



Jenese Utley

[www.art-dept.com](http://www.art-dept.com)

# Art Department



Jenese Utle

[www.art-dept.com](http://www.art-dept.com)



# Art Department



Jenese Utley

[www.art-dept.com](http://www.art-dept.com)

# Art Department



Jeneese Utley

[www.art-dept.com](http://www.art-dept.com)



# Art Department



Reference: Michael Sabini suit, cushions by Hirsch, leather shoes, gold balloon



Reference: Edie sweater, leather trousers



Jenesee Utley

[www.art-dept.com](http://www.art-dept.com)



# Art Department



Jenese Utle

[www.art-dept.com](http://www.art-dept.com)



# Art Department



Jenese Utley

[www.art-dept.com](http://www.art-dept.com)



# Art Department



Jenese Utley

[www.art-dept.com](http://www.art-dept.com)



# Art Department



Jenese Utley

[www.art-dept.com](http://www.art-dept.com)



# Art Department



Jenese Utley

[www.art-dept.com](http://www.art-dept.com)



# Art Department



Jenese Utley

[www.art-dept.com](http://www.art-dept.com)



# Art Department



Jenese Utlej

[www.art-dept.com](http://www.art-dept.com)



# Art Department



Jenese Utley

[www.art-dept.com](http://www.art-dept.com)

# Art Department



Jenesee Utley

[www.art-dept.com](http://www.art-dept.com)



# Art Department



Jenesee Utley

[www.art-dept.com](http://www.art-dept.com)



# Art Department



Jenesee Utley

[www.art-dept.com](http://www.art-dept.com)

# Art Department



## HARDIOR

With this Fall 17 collection, Kris Van Assche is taking inspiration from the New Wave period. Emerging at the end of the 1970's in Europe and the USA, this movement is an "offshoot" of Rock 'n Roll music, characterized by the use of electronic devices to complete guitar riffs. Paying tribute to the House Savoir-Faire and its heritage, Kris Van Assche is also re-interpreting traditional tailoring in the light of underground inspirations, creating contrasting combinations which are the base of the new Dior Homme spirit.

Photographer *FILIPPO DEL VITA*  
Stylist *JENESEE UTLEY*

Black wool and cashmere sweater with flat metal bands. "Cropped" trousers in red velvet. Leather gloves. Nylon rucksack with mesh pills pile and black callain. Bear keyring with "Hardior" strap. DIOR HOMME



Coat with sheepskin collar, black wool and cashmere. DIOR HOMME



Duffel coat in black wool and cashmere, webbing applications with orange topstitching. Polo-neck jumper in orange cashmere knit. DIOR HOMME

## Jenese Utley

[www.art-dept.com](http://www.art-dept.com)



# Art Department



Jenesee Utley

[www.art-dept.com](http://www.art-dept.com)

# Art Department



## YEARBOOK



EDITION #12



# Jenessee Utley

www.art-dept.com



# Art Department



Jenese Utle

[www.art-dept.com](http://www.art-dept.com)

# Art Department



Jenese Utle

[www.art-dept.com](http://www.art-dept.com)



# Art Department



Jenese Utley

[www.art-dept.com](http://www.art-dept.com)

# Art Department



Jeneese Utley

[www.art-dept.com](http://www.art-dept.com)



# Art Department



LEFT: Jacket: Yanjun  
Pants: Yanjun  
Socks: REI  
Shoes: Michael Kors  
RIGHT: Coat: Michael Kors  
Vest: Yanjun



Jenese Utle

[www.art-dept.com](http://www.art-dept.com)

# Art Department



Jenesee Utley

[www.art-dept.com](http://www.art-dept.com)



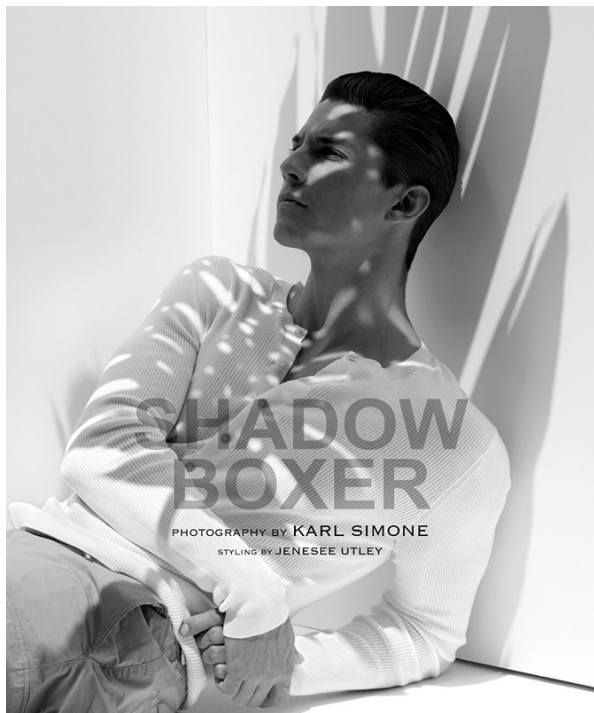
# Art Department



Jenesee Utley

[www.art-dept.com](http://www.art-dept.com)

# Art Department



Jenesee Utley

[www.art-dept.com](http://www.art-dept.com)



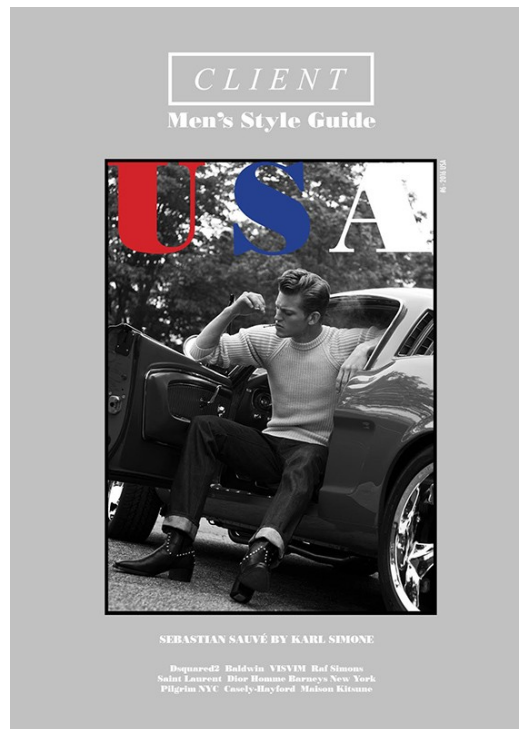
# Art Department



Jenese Utley

[www.art-dept.com](http://www.art-dept.com)

# Art Department



Jenese Utle

[www.art-dept.com](http://www.art-dept.com)



# Art Department



Jenese Uley

[www.art-dept.com](http://www.art-dept.com)

# Art Department



Jenese Utley

[www.art-dept.com](http://www.art-dept.com)



# Art Department



Jenese Utle

[www.art-dept.com](http://www.art-dept.com)



# Art Department

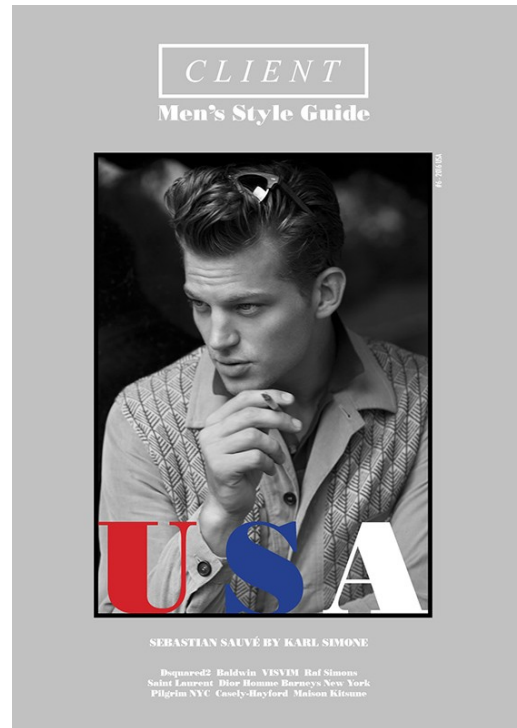


Jenese Utley

[www.art-dept.com](http://www.art-dept.com)



# Art Department

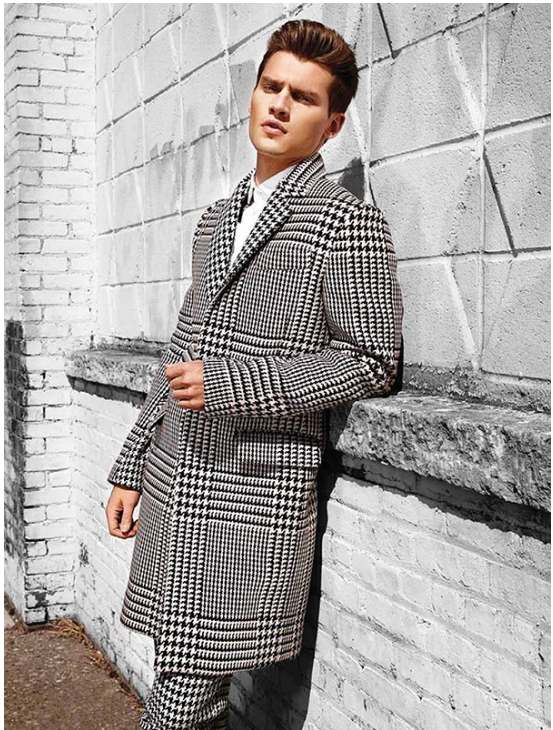
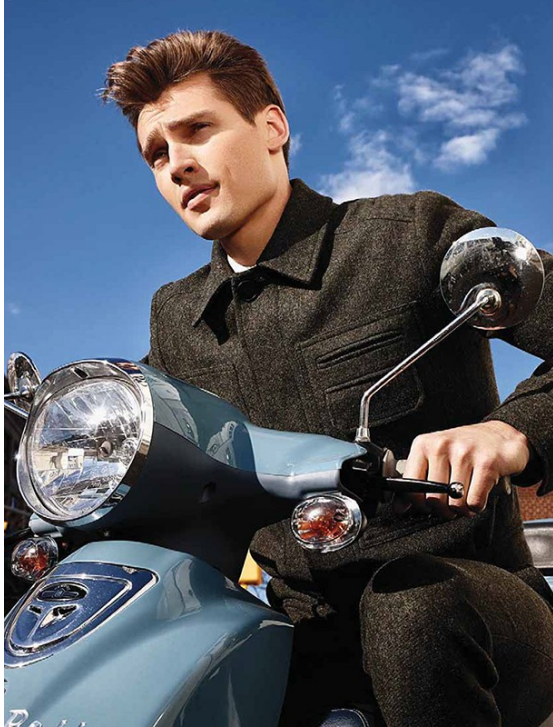


Jenesee Utley

[www.art-dept.com](http://www.art-dept.com)



# Art Department



Trench coat by OFFICINE  
GENERAL, shirt, vest and tie by TOLK,  
trousers by GÖKLEN

OPPOSITE PAGE  
Coat, shirt, trousers,  
sneaker trousers  
and platform shoes  
by PRAGA

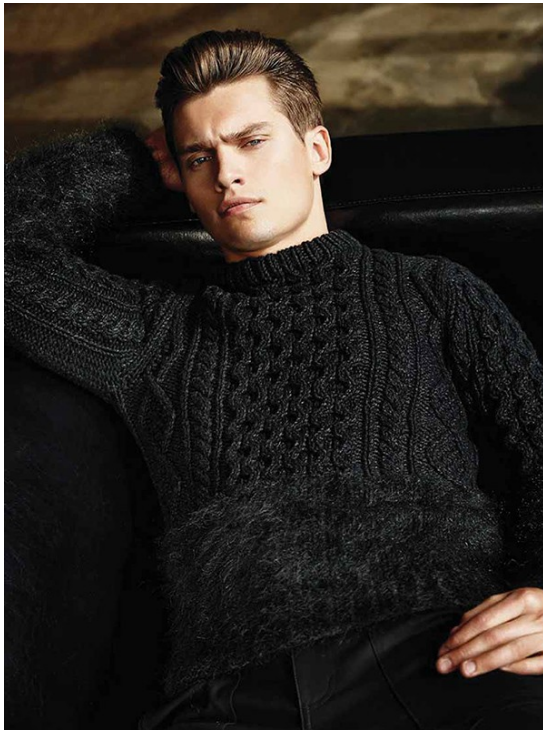
PHOTOS BY  
ASSISTANT BRIAN  
OPTIMAL, DIGITAL TECH  
HENRY KING, STYLING  
BY MOE LEM, HAIR  
BY PAUL MCNEIL  
BRIAN GANTNER, MAKE-UP  
ASSISTANT JASHINE  
FROE, HAIR UP TO  
JENNIFER CHEN  
MODEL: VLADYMYR  
MODEL MANAGEMENT

## Jenese Utley

[www.art-dept.com](http://www.art-dept.com)



# Art Department

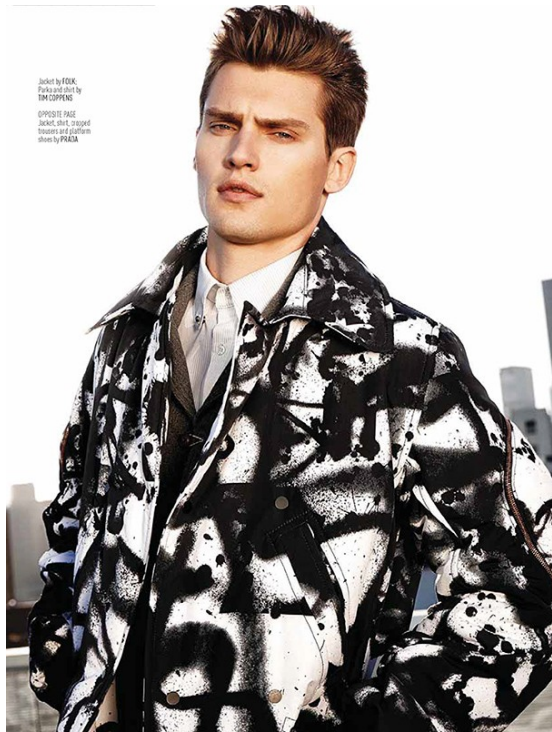


Jenese Utley

[www.art-dept.com](http://www.art-dept.com)



# Art Department



Jenese Utey

[www.art-dept.com](http://www.art-dept.com)