

# Art Department



## SUMMER BLOOM

The fresh and striking mix of colour for the sunny season.  
*Photography* Filippo Del Vita *Styling* Jenesee Utley

Willy Chavarria Oversized shirt, wide leg trousers

## Jenesee Utley

[www.art-dept.com](http://www.art-dept.com)

# Art Department



Balenciaga Le Cagole bag; Willy Chavarria Wide leg trousers

## Jenese Utley

[www.art-dept.com](http://www.art-dept.com)

# Art Department



Jenese Utey

[www.art-dept.com](http://www.art-dept.com)



# Art Department



Jenese Utley

[www.art-dept.com](http://www.art-dept.com)



# Art Department



Jenese Utley

[www.art-dept.com](http://www.art-dept.com)

# Art Department



Jenese Utley

[www.art-dept.com](http://www.art-dept.com)

# Art Department



Jenesee Utley

[www.art-dept.com](http://www.art-dept.com)



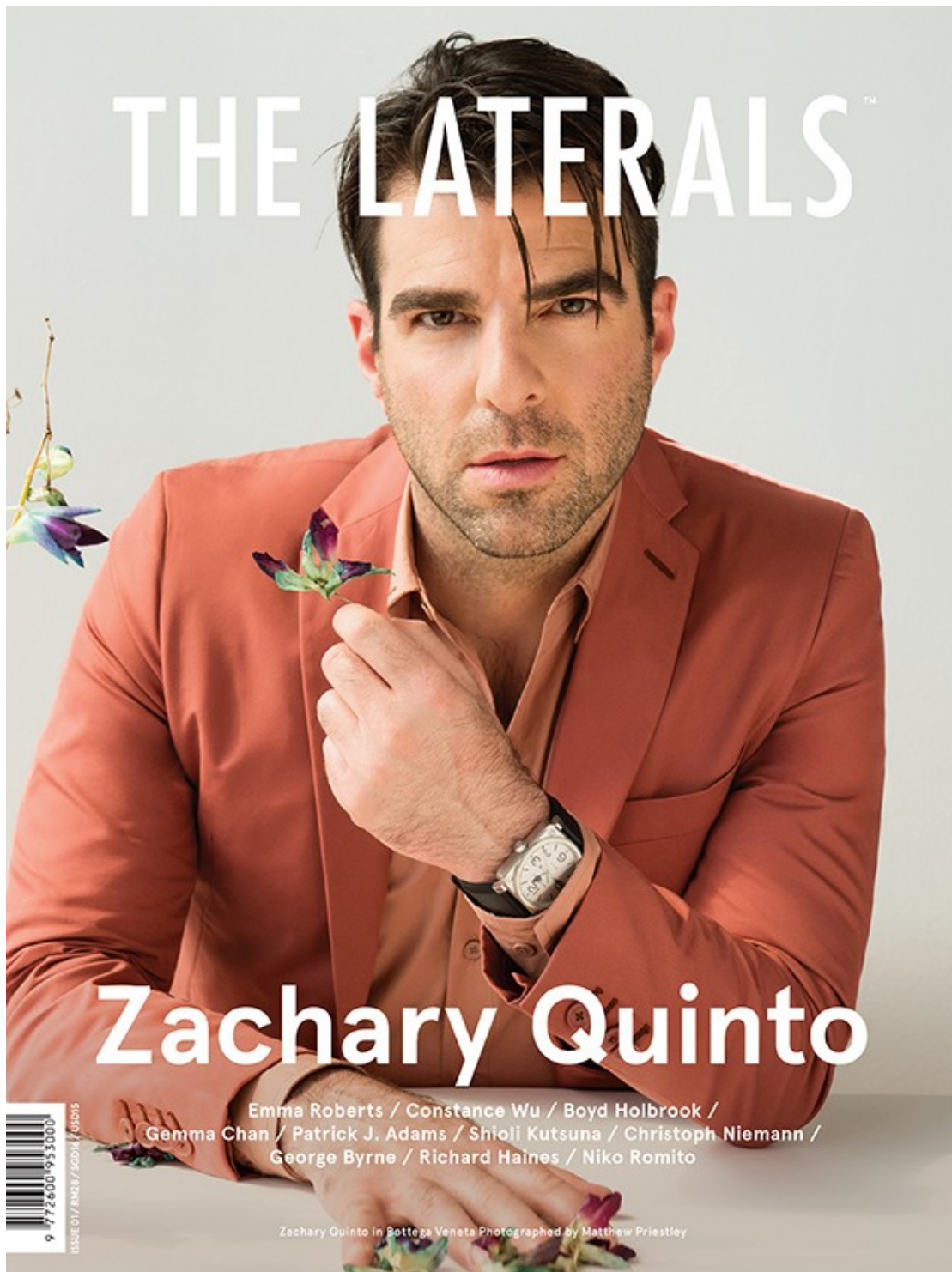
# Art Department



Jenese Utle

[www.art-dept.com](http://www.art-dept.com)

# Art Department



Jenese Utle

[www.art-dept.com](http://www.art-dept.com)

# Art Department



Jenessé Utley

[www.art-dept.com](http://www.art-dept.com)



# Art Department



Jenesee Utley

[www.art-dept.com](http://www.art-dept.com)

# Art Department



Jenese Utley

[www.art-dept.com](http://www.art-dept.com)

# Art Department



Jenese Utle

[www.art-dept.com](http://www.art-dept.com)



# Art Department



Jenese Utley

[www.art-dept.com](http://www.art-dept.com)

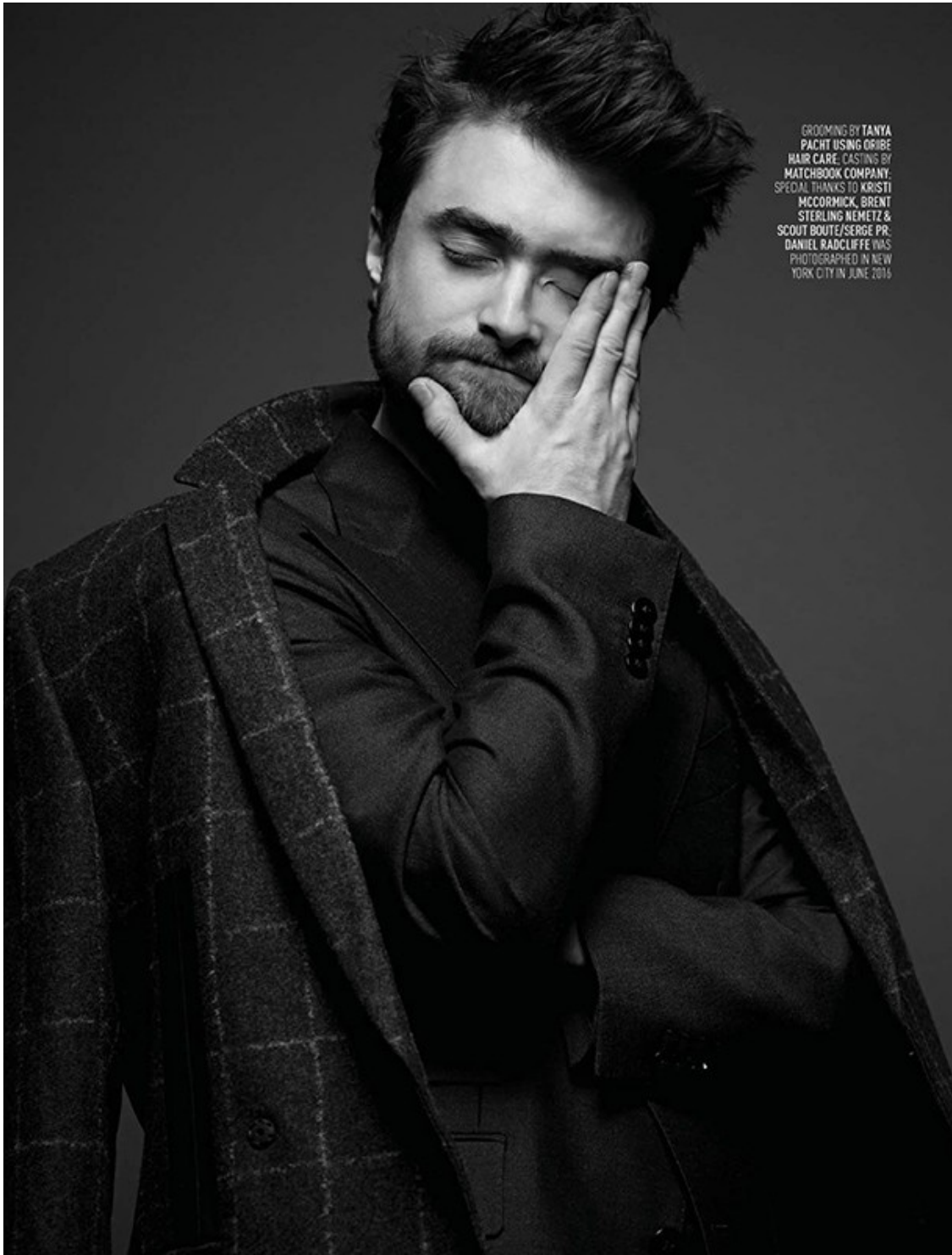
# Art Department



Jenese Utle

[www.art-dept.com](http://www.art-dept.com)

# Art Department



GROOMING BY TANYA  
PACHT USING GRIBE  
HAIR CARE. CASTING BY  
MATCHBOOK COMPANY.  
SPECIAL THANKS TO KRISTI  
MCCORMICK, BRENT  
STERLING NEMETZ &  
SCOUT BOUTE/SERGE PR.  
DANIEL RADCLIFFE WAS  
PHOTOGRAPHED IN NEW  
YORK CITY IN JUNE 2016

Jenese Utle

[www.art-dept.com](http://www.art-dept.com)



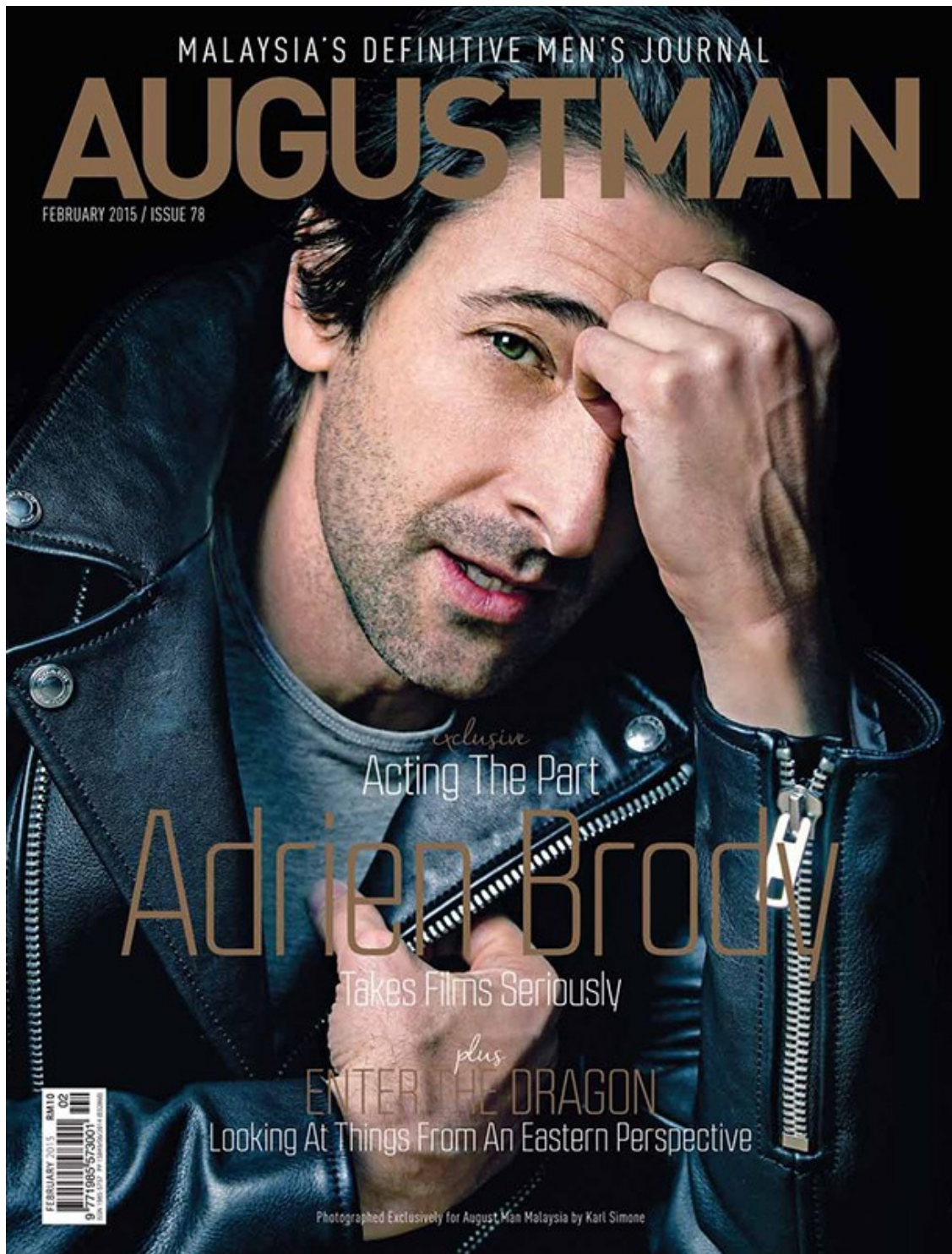
# Art Department



Jenesee Utley

[www.art-dept.com](http://www.art-dept.com)

# Art Department



Jenesee Utley

[www.art-dept.com](http://www.art-dept.com)



# Art Department



Jenesee Utley

[www.art-dept.com](http://www.art-dept.com)



# Art Department



Jeneese Utley

[www.art-dept.com](http://www.art-dept.com)

# Art Department



Jenese Utley

[www.art-dept.com](http://www.art-dept.com)



# Art Department



Jenese Utley

[www.art-dept.com](http://www.art-dept.com)



# Art Department



Jenese Utley

[www.art-dept.com](http://www.art-dept.com)

# Art Department



Jenese Utley

[www.art-dept.com](http://www.art-dept.com)

# Art Department



Jenesee Utley

[www.art-dept.com](http://www.art-dept.com)



# Art Department



Jenesee Utley

[www.art-dept.com](http://www.art-dept.com)

# Art Department



Jenese Utley

[www.art-dept.com](http://www.art-dept.com)

# Art Department



Jenessa Utley

[www.art-dept.com](http://www.art-dept.com)



# Art Department



Jenese Utley

[www.art-dept.com](http://www.art-dept.com)

# Art Department



Jenese Utley

[www.art-dept.com](http://www.art-dept.com)



# Art Department

Black suit, shirt,  
sweater, sneakers,  
tie, belt and chain,  
**DIOR HOMME**

Photographer Filippo del Vita  
Stylist Jenesee Utley  
Grooming Eloise Cheung  
for Mac cosmetics  
Model Dillon at Wilhelmina NYC



Jenesee Utley

[www.art-dept.com](http://www.art-dept.com)



# Art Department



Jenese Utley

[www.art-dept.com](http://www.art-dept.com)

# Art Department

# YEARBOOK



EDITION #12

Jenesee Utley

[www.art-dept.com](http://www.art-dept.com)


# Art Department

MODA

Casaco, suéter  
e calça Bottega  
Veneta

SIMPLE  
CHIC

A ALFAIATARIA ASSUME LINHAS RELAXADAS  
PARA DAR FORMA A UMA ELEGÂNCIA  
DESCONSTRUÍDA E SEM ESFORÇO  
Fotos **KARL SIMONE** Styling **JENESEE UTLEY**

142 ||  || OUTUBRO 2016

Jenesee Utley

[www.art-dept.com](http://www.art-dept.com)



# Art Department



Jenese Utley

[www.art-dept.com](http://www.art-dept.com)

# Art Department



Jenese Utley

[www.art-dept.com](http://www.art-dept.com)



# Art Department



Jenese Utley

[www.art-dept.com](http://www.art-dept.com)



# Art Department



62 Fall 2013 PEOPLE Gorgeous At Any Age

HAIR: NICK CONNOR; MAKEUP: JESSICA WILSON; STYLING: JENESSEE UTLEY; MANAGEMENT: JENESSEE UTLEY

Jenesee Utley

[www.art-dept.com](http://www.art-dept.com)

# Art Department



Jenesee Utley



# Art Department

ON ROSE SMITH TBI DRESS  
AVAILABLE AT SAKS FIFTH  
AVENUE AT BAL HARBOUR  
SHOPS, TRICOM ZELLA  
LEGGINGS, AVAILABLE AT  
NORDSTROM AT AVENTURA  
MALL, NORDSTROM.COM  
TON SANDALS, AVAILABLE AT  
NORDSTROM AT AVENTURA  
MALL, TENA.COM

ON MARGARITA BROADWATER  
COACH PURSE, AVAILABLE  
AT BRICKELL CITY CENTRE,  
COACH.COM

148 vnicomagf1.com

**DOUBLE TROUBLE**

Traditional sportswear has noticeably turned up its fashion quotient, making it the perfect complement to this season's hottest ready-to-wear pieces.

PHOTOGRAPHY BY FILIPPO DEL VITA STYLED BY JENESEE UTLEY

vnicomagf1.com 149

Jenese Utley

[www.art-dept.com](http://www.art-dept.com)



# Art Department



Jenesee Utley

[www.art-dept.com](http://www.art-dept.com)

# Art Department



Louis Vuitton leather shirt, skirt & jacket Giuseppe Zanotti lace-up pumps



Coach 64 leather vest, skirt, armband & leather pants

Jenese Utley

[www.art-dept.com](http://www.art-dept.com)

# Art Department



Jenessee Utley

[www.art-dept.com](http://www.art-dept.com)



# Art Department



Jenese Utley

[www.art-dept.com](http://www.art-dept.com)

# Art Department



Jeneese Utley

[www.art-dept.com](http://www.art-dept.com)

# Art Department



Jenesee Utley

[www.art-dept.com](http://www.art-dept.com)



# Art Department



Jenese Utley

[www.art-dept.com](http://www.art-dept.com)

# Art Department



Jenese Utley

[www.art-dept.com](http://www.art-dept.com)

# Art Department

## DEEP EMOTION

Photography  
FILIPPO DEL VITA

Styling  
JENESEE UTLEY



Foundation: Kevin Aucoin Sensual  
Skin Enhancer in SX 03  
Eyes: Dior Eyeliner Long Wear  
Waterproof in 254 Captivating  
Blue, Shu Uemura False  
Lashes in Smoky Layers  
Blush: Yves Saint Laurent  
Terre Saharienne Powder  
in 3 Golden Sand  
Lips: Tom Ford Lip Color  
Matte Flame  
Nails: Christian Louboutin  
in La Favorita nude

Pink sequin gown, PREEN by  
THORNTON BREGAZZI



Skin: La Mer The Moisturizing  
Soft Cream  
Foundation: Dior Skin Nude Air  
Serum in 020 Light Beige  
Eyebrows: Anastasia Beverly  
Hills Clear Brow Gel  
Eyes: Chanel Les 4 Ombres in 79  
Spices, Le Volume the Chanel  
Waterproof mascara in 10 Noir  
Blush: Estee Lauder Genuine  
Glow in Peachy Keen  
Lips: Christian Louboutin lipstick  
in Ron Ron and Miss Clichy

White button down shirt, SAINT  
LAURENT. Striped bowtie, DIOR

Just like an artist  
on her canvas, you  
must look at your  
eyes, lips, contours,  
cheekbones and  
even neckline to  
create your own  
masterpiece. From  
glitter eyes to arty  
liner and neon  
lips, your makeup  
will be the one  
thing other than  
your clothing  
itself that stands  
out the most.

## Jenessee Utley

[www.art-dept.com](http://www.art-dept.com)



# Art Department



## SNOW PATROL

PHOTOGRAPHY KARL SIMONE  
STYLE EDITOR JENESEE UTLEY  
TALENT CALEB ELUAH, IMG

Jacket: Yajun  
Pant: Willy Chavarria  
Belt: Willy Chavarria  
Socks: REL  
Shoes: Michael Kors

## Jeneese Utley

[www.art-dept.com](http://www.art-dept.com)

# Art Department



Jenese Utle

[www.art-dept.com](http://www.art-dept.com)

# Art Department



Jenese Utley

[www.art-dept.com](http://www.art-dept.com)



# Art Department



Jenese Utley

[www.art-dept.com](http://www.art-dept.com)

# Art Department



Jenesee Utley

[www.art-dept.com](http://www.art-dept.com)



# Art Department

Blue cable knit angora sweater, teal high waisted pants, suede ruffled socks, leather mules and sunglasses, FENDI

Pantsuits are among the fall fashion trends that automatically have us wanting to update our work wardrobe, but with something more hip and cool. Here are some of our suggestions.



## INTRIGUING ENSEMBLES

Photography  
FILIPPO DEL VITA

Styling  
JENESEE UTLEY

Jenesee Utley

[www.art-dept.com](http://www.art-dept.com)



# Art Department



Jenesee Utley

[www.art-dept.com](http://www.art-dept.com)

# Art Department



Jenese Utley

[www.art-dept.com](http://www.art-dept.com)

# Art Department



Jenesee Utley

[www.art-dept.com](http://www.art-dept.com)



# Art Department



Jenese Utley

[www.art-dept.com](http://www.art-dept.com)

# Art Department



Jenese Utley

[www.art-dept.com](http://www.art-dept.com)

# Art Department



Jenese Utle

[www.art-dept.com](http://www.art-dept.com)



# Art Department



Jenese Utle

[www.art-dept.com](http://www.art-dept.com)

# Art Department



Jenese Utley

[www.art-dept.com](http://www.art-dept.com)



# Art Department



Black wool and cashmere sweater with flat metal beads. "Cropped" trousers in red velvet. Leather gloves. Nylon rucksack with mosh pits print and black calfskin. Bear key ring with "hardior" strap. DIOR HOMME

## HARDIOR

With this Fall 17 collection, Kris Van Assche is taking inspiration from the New Wave period. Emerging at the end of the 1970's in Europe and the USA, this movement is an "offshoot" of Rock 'n Roll music, characterized by the use of electronic devices to complete guitar riffs. Paying tribute to the House Savoir-Faire and its heritage, Kris Van Assche is also re-interpreting traditional tailoring in the light of underground inspirations, creating contrasting combinations which are the base of the new Dior Homme spirit.

Photographer *FILIPPO DEL VITA*  
Stylist *JENESEE UTLEY*

## Jenesee Utley

[www.art-dept.com](http://www.art-dept.com)



# Art Department



PRADA JACKET, SKIRT, TOP BAG  
AND SHOES, AVAILABLE AT BAL  
HARBOUR SHOPS, PRADA.COM.

## Jenese Utley

[www.art-dept.com](http://www.art-dept.com)

# Art Department



CHANEL DRESS, BAG AND SHOES,  
AVAILABLE AT BAL HARBOUR SHOPS,  
CHANEL.COM; STOCKINGS ARE  
STYLIST'S OWN.

PHOTOGRAPHER: FILIPPO DEL VITA  
STYLIST: JENESEE UTLEY  
HAIR: ELOISE CHEUNG/ART DEPARTMENT  
USING RENE FURTERER  
MAKEUP: CHICHI SAITO/ART DEPARTMENT  
USING SMASHBOX  
MODEL: SAMANTHA ARCHIBALD/MARILYN NYC

venicemagfl.com 149

## Jeneese Utley

[www.art-dept.com](http://www.art-dept.com)

# Art Department



Jenese Utley

[www.art-dept.com](http://www.art-dept.com)



# Art Department



Jenese Utley

[www.art-dept.com](http://www.art-dept.com)

# Art Department



Jenese Utley

[www.art-dept.com](http://www.art-dept.com)



# Art Department



Jenese Utley

[www.art-dept.com](http://www.art-dept.com)



# Art Department



Jenese Utlej

[www.art-dept.com](http://www.art-dept.com)