

# Art Department



Lara Backmender

[www.art-dept.com](http://www.art-dept.com)

# Art Department



Lara Backmender

[www.art-dept.com](http://www.art-dept.com)

# Art Department



Lara Backmender

[www.art-dept.com](http://www.art-dept.com)

# Art Department



Lara Backmender

[www.art-dept.com](http://www.art-dept.com)

# Art Department



JILLIAN BELL • MANNY JACINTO • JUNE DIANE RAPHAEL • IS FATPHOBIA RACIST?

FOR  
WOMEN  
WITH  
SOMETHING  
TO GET OFF  
THEIR CHESTS

# BUST

FALL  
FASHION

DEATH METAL  
MEETS PRAIRIE

DIY ROPE  
NECKLACES

FANTASTIC  
HOLOGRAPHICS

PATRICIA  
ARQUETTE

LAW & ORDER: SVU'S

MARISKA  
HARGITAY

Lara Backmender

[www.art-dept.com](http://www.art-dept.com)

# Art Department



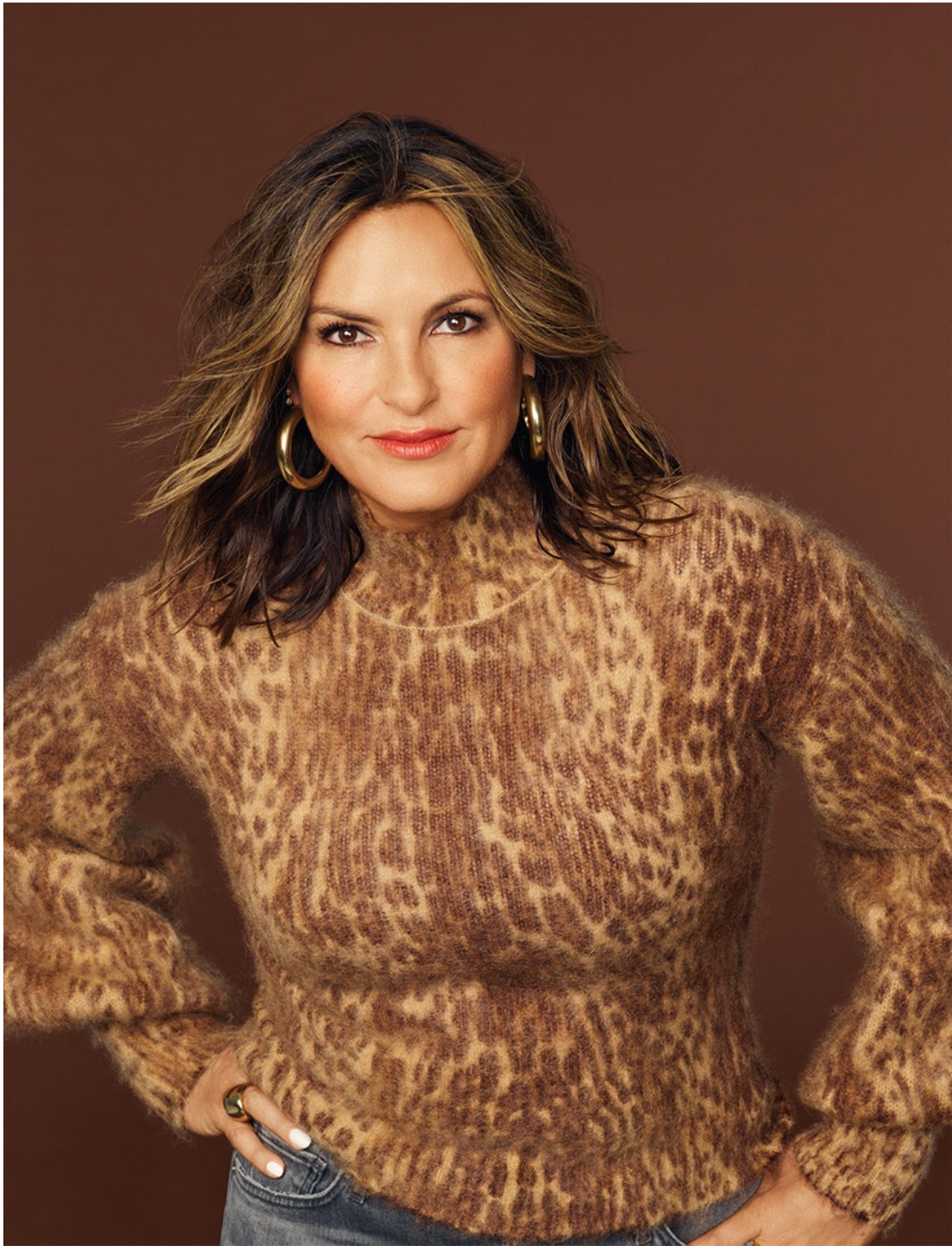
36 • SEPT/OCT 2019 • BUST

DRESS: ZIMMERMAN; COAT: LAFAYETTE 148; SHOES: SANTINI; EARRINGS: LAURA LOMBARDI

## Lara Backmender

[www.art-dept.com](http://www.art-dept.com)

# Art Department



Lara Backmender

[www.art-dept.com](http://www.art-dept.com)

# Art Department



Lara Backmender



# Art Department



Lara Backmender

[www.art-dept.com](http://www.art-dept.com)

# Art Department



Lara Backmender

[www.art-dept.com](http://www.art-dept.com)

# Art Department



Lara Backmender

[www.art-dept.com](http://www.art-dept.com)

# Art Department



STRIPED LONG-SLEEVED CREWNECK: JOOS TRICOT; MIXED METAL AND ACRYLIC EARRINGS: RACHEL COMEY

Lara Backmender

[www.art-dept.com](http://www.art-dept.com)

# Art Department



Lara Backmender

[www.art-dept.com](http://www.art-dept.com)

# Art Department



SELF-PORTRAIT WHITE POLYESTER BOW BLOUSE; JILL  
STUART BLACK POLYESTER BELL-SLEEVED DRESS;  
FALKE NYLON BLACK TIGHTS; NICHOLAS KIRKWOOD  
BLACK LEATHER BOOTS WITH PEARL DETAIL.

76 • OCT/NOV 2017 • BUST

## Lara Backmender

[www.art-dept.com](http://www.art-dept.com)

# Art Department



JILL STUART KNIT METALLIC SWEATER AND  
DARK GRAY TAFFETA DRESS; PALKE NYLON  
BLACK TIGHTS; SERGIO ROSSI BLACK  
LEATHER BOOTS WITH STUD DETAIL.

STYLIST ASST: YEOWAN LEE  
PRODUCTION ASST: COURTNEY  
BISSONETTE

SPECIAL THANK YOU FOR LOCATION:  
CYNTHIA VON BUHLER

77

## Lara Backmender

[www.art-dept.com](http://www.art-dept.com)

# Art Department



Lara Backmender

[www.art-dept.com](http://www.art-dept.com)



# Art Department



Lara Backmender

[www.art-dept.com](http://www.art-dept.com)

# Art Department



Lara Backmender

[www.art-dept.com](http://www.art-dept.com)

# Art Department



Lara Backmender

[www.art-dept.com](http://www.art-dept.com)

# Art Department



Lara Backmender

[www.art-dept.com](http://www.art-dept.com)

# Art Department



Lara Backmender

[www.art-dept.com](http://www.art-dept.com)

# Art Department



Lara Backmender

[www.art-dept.com](http://www.art-dept.com)

# Art Department



Lara Backmender

[www.art-dept.com](http://www.art-dept.com)

# Art Department



Lara Backmender

[www.art-dept.com](http://www.art-dept.com)



# Art Department



Lara Backmender

[www.art-dept.com](http://www.art-dept.com)

# Art Department



Lara Backmender

[www.art-dept.com](http://www.art-dept.com)

# Art Department



Lara Backmender

[www.art-dept.com](http://www.art-dept.com)

# Art Department



Lara Backmender

[www.art-dept.com](http://www.art-dept.com)

# Art Department



Lara Backmender

[www.art-dept.com](http://www.art-dept.com)

# Art Department

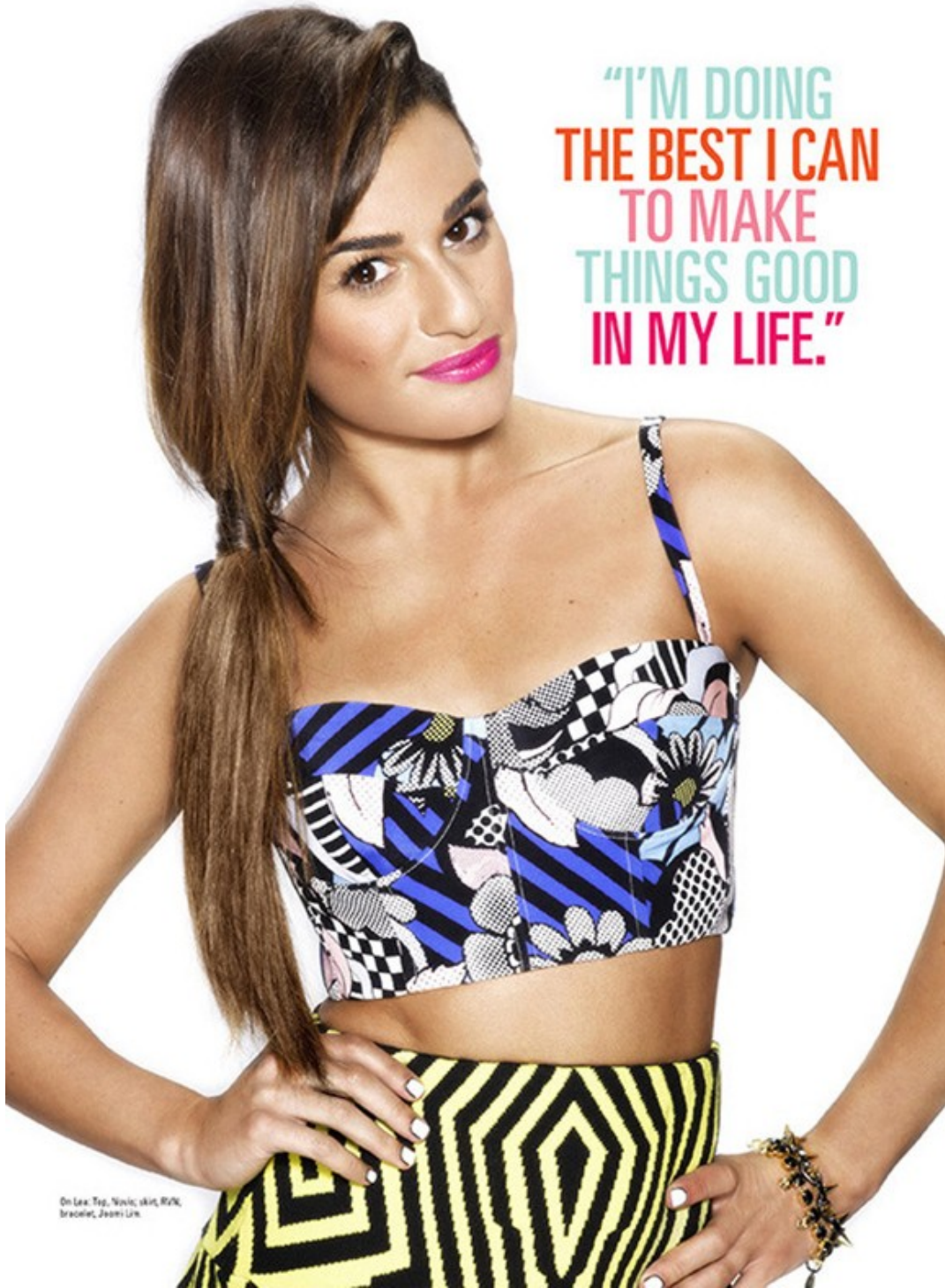


MADWELL DENIM OVERALLS; CANDY PUNK @ FEMINIST APPAREL; T-SHIRT; PAUL ANDREWS SHOES; LULU FROST EARRINGS; GILLIAN CONROY 14K GOLD NECKLACES; STYLIST'S INTERN; AMANDA PRICE

Lara Backmender

[www.art-dept.com](http://www.art-dept.com)

# Art Department



On Lex: Top, Nivvic; skirt, RVK; bracelet, Jessie Lin.

Lara Backmender

# Art Department



Lara Backmender

[www.art-dept.com](http://www.art-dept.com)



# Art Department



Lara Backmender

[www.art-dept.com](http://www.art-dept.com)

# Art Department



Lara Backmender

[www.art-dept.com](http://www.art-dept.com)

# Art Department



Lara Backmender

[www.art-dept.com](http://www.art-dept.com)

# Art Department



Lara Backmender

[www.art-dept.com](http://www.art-dept.com)

# Art Department



Lara Backmender

# Art Department



Lara Backmender

[www.art-dept.com](http://www.art-dept.com)

# Art Department



Lara Backmender

[www.art-dept.com](http://www.art-dept.com)

# Art Department



Lara Backmender

[www.art-dept.com](http://www.art-dept.com)



# Art Department



ON LUCY: Top,  
Michael Kors;  
Headband, Lora  
Mats; earrings,  
Bing Bong;  
necklace, Emily  
Elizabeth.

Lara Backmender

[www.art-dept.com](http://www.art-dept.com)

# Art Department



ON LUCY: Top,  
Wolfox; sunglasses,  
Kater Walker;  
necklace, L.A. Post.

Lara Backmender

[www.art-dept.com](http://www.art-dept.com)

# Art Department



Lara Backmender

[www.art-dept.com](http://www.art-dept.com)

# Art Department



Lara Backmender

[www.art-dept.com](http://www.art-dept.com)

# Art Department



Lara Backmender

[www.art-dept.com](http://www.art-dept.com)

# Art Department



Lara Backmender

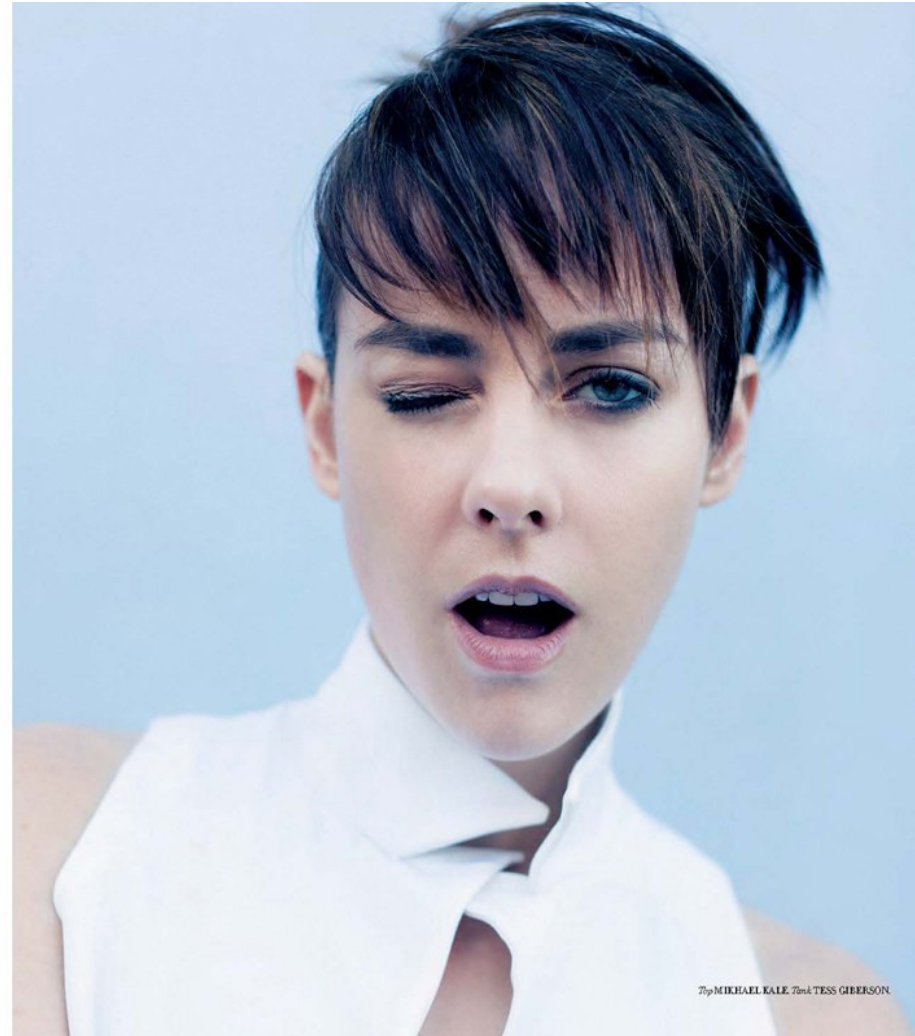
# Art Department

## JENA MALONE O

*"HUNGRY"*

Photography CAMERON KRONE  
Styling LARA BACKMENDER

*Building on the success of over eighteen years of acting, and now fanning the flames with her role in the second installment of The Hunger Games film trilogy, The Hunger Games: Catching Fire, Jena Malone sits down with TWELV and discusses past, present, and what is in store for one of Hollywood's brightest flames.*



Top: MIKHAELEALE. Hair: TESS GIBERSON.

## Lara Backmender

[www.art-dept.com](http://www.art-dept.com)

# Art Department



Lara Backmender

[www.art-dept.com](http://www.art-dept.com)



# Art Department



Lara Backmender

[www.art-dept.com](http://www.art-dept.com)

# Art Department



Lara Backmender

[www.art-dept.com](http://www.art-dept.com)

# Art Department



Lara Backmender

# Art Department



Lara Backmender

[www.art-dept.com](http://www.art-dept.com)