

Art Department



Samantha Traina

www.art-dept.com

Art Department



Samantha Traina

www.art-dept.com

Art Department



Samantha Traina

www.art-dept.com

Art Department



Samantha Traina

www.art-dept.com

Art Department



Samantha Traina

www.art-dept.com

Art Department



Samantha Traina

www.art-dept.com

Art Department



Samantha Traina

www.art-dept.com

Art Department



Samantha Traina

www.art-dept.com

Art Department



Samantha Traina

www.art-dept.com

Art Department



Samantha Traina

www.art-dept.com

Art Department



Samantha Traina

www.art-dept.com

Art Department



Samantha Traina

www.art-dept.com

Art Department



Samantha Traina

www.art-dept.com

Art Department



Samantha Traina

www.art-dept.com

Art Department



Samantha Traina

www.art-dept.com

Art Department



Samantha Traina

www.art-dept.com

Art Department



Samantha Traina

www.art-dept.com

Art Department



Samantha Traina

www.art-dept.com

Art Department



Samantha Traina

www.art-dept.com

Art Department



Samantha Traina

www.art-dept.com

Art Department



Samantha Traina

www.art-dept.com

Art Department



Gucci top, \$1,350,
and pants, \$1,950.
David Webb bracelet.
OPPOSITE Balenciaga
by Nicolas Ghesquière
top, \$1,765, skirt, heels,
\$795, necklace, \$415,
and rings, \$555/set of 5.

Samantha Traina

www.art-dept.com

Art Department



Louis Vuitton dress, price upon request.
Manolo Blahnik pumps, \$695, Barneys
New York. Rag & Bone hat, \$175, Cartier
necklace, David Webb bracelet, and ring,
OPPOSITE Bottega Veneta dress.

Samantha Traina

www.art-dept.com

Art Department



Samantha Traina

www.art-dept.com

Art Department



Reese Witherspoon wears cotton, silk and cashmere top, about £700; cotton skirt, about £600, both Nina Ricci. Patent heels, £375, Jimmy Choo. Platinum and diamond earrings; white gold ring; platinum and diamond bracelet, all from a selection, Chopard

WILD AT HEART

Far from the cliché of the all-American blonde,

Reese Witherspoon is a sophisticated, intelligent star who revels in making tough choices, in work and in life

BY AJESH PATALAY

PHOTOGRAPHS BY ALEXI LUBOMIRSKI

STYLED BY SAMANTHA TRAINA

Samantha Traina

www.art-dept.com

Art Department



Samantha Traina

www.art-dept.com

Art Department



THIS PAGE: beaded crepe dress, £5,150, Balenciaga. Platinum and diamond bracelet (just seen), from a selection, Chopard. OPPOSITE: cotton and lace shirt, about £860, Nina Ricci. Organza skirt, £7,200, Michael Kors. Patent heels, £450, Jimmy Choo. Platinum and diamond earrings; platinum and diamond bracelet, both from a selection, Chopard

ALEXI LUBOMIRSKI

Samantha Traina

www.art-dept.com

Art Department



Tulle gown, £8,500, Ralph
Lauren Collection. White, yellow
and rose gold and diamond ring,
£12,600, Cartier

© EXILUBOMIRSKI

Samantha Traina

www.art-dept.com

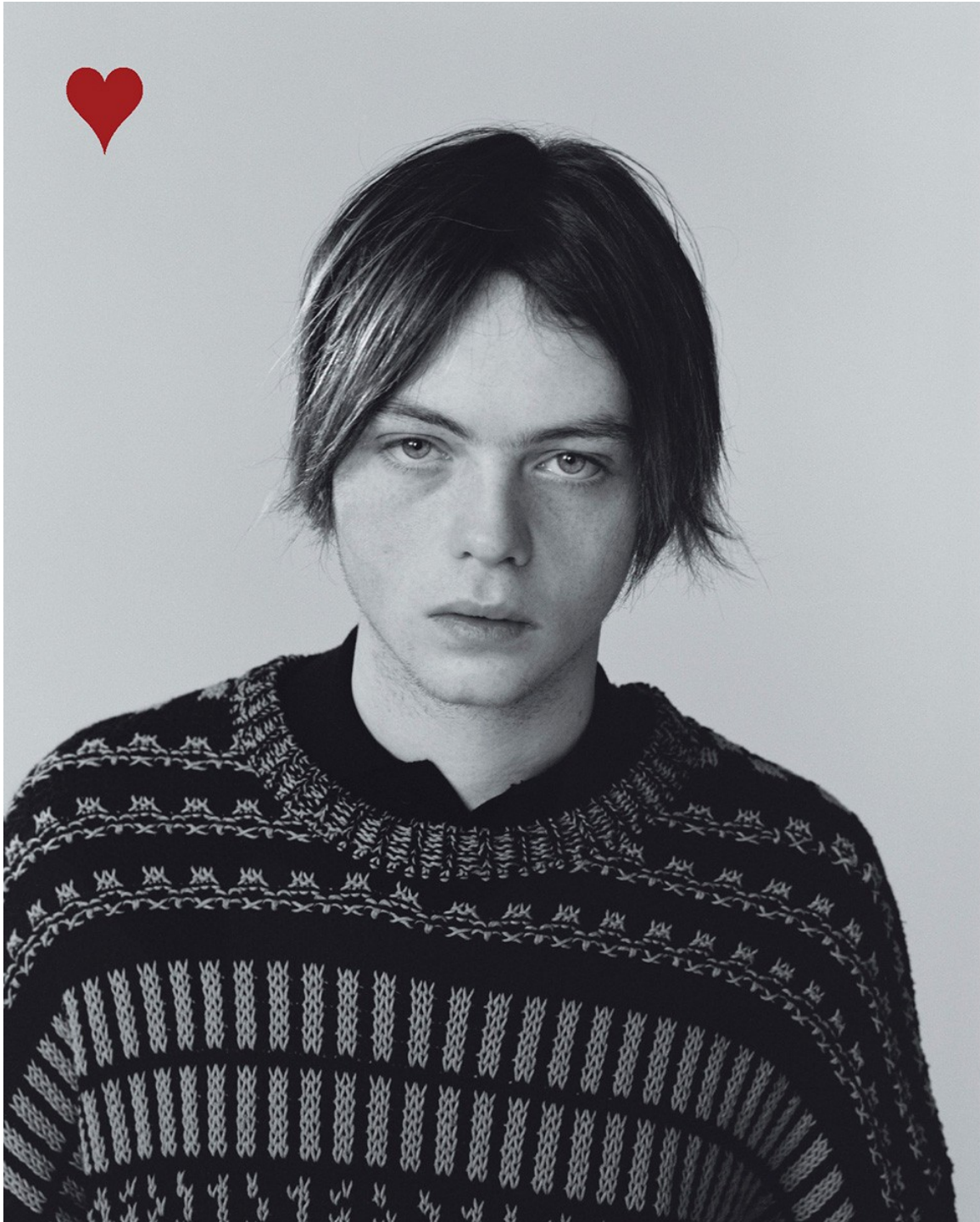
Art Department



Samantha Traina

www.art-dept.com

Art Department



Samantha Traina

www.art-dept.com

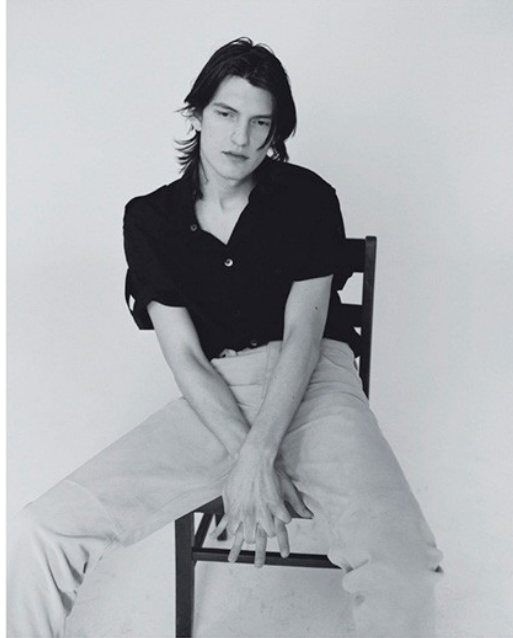
Art Department



Samantha Traina

www.art-dept.com

Art Department



NELLA PAGINA ACCANTO:
MAGLIA AMI, CAMICIA NAVIGARE.

CAMICIA SALVATORE FERRAGAMO,
PANTALONI ACNE STUDIOS.

207

Samantha Traina

www.art-dept.com

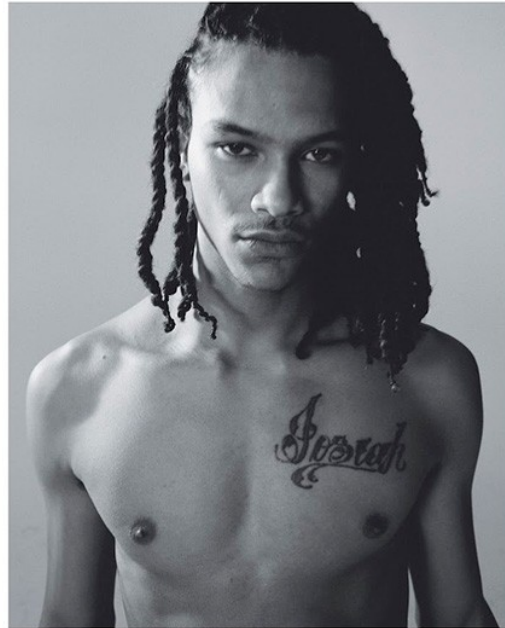
Art Department



Samantha Traina

www.art-dept.com

Art Department



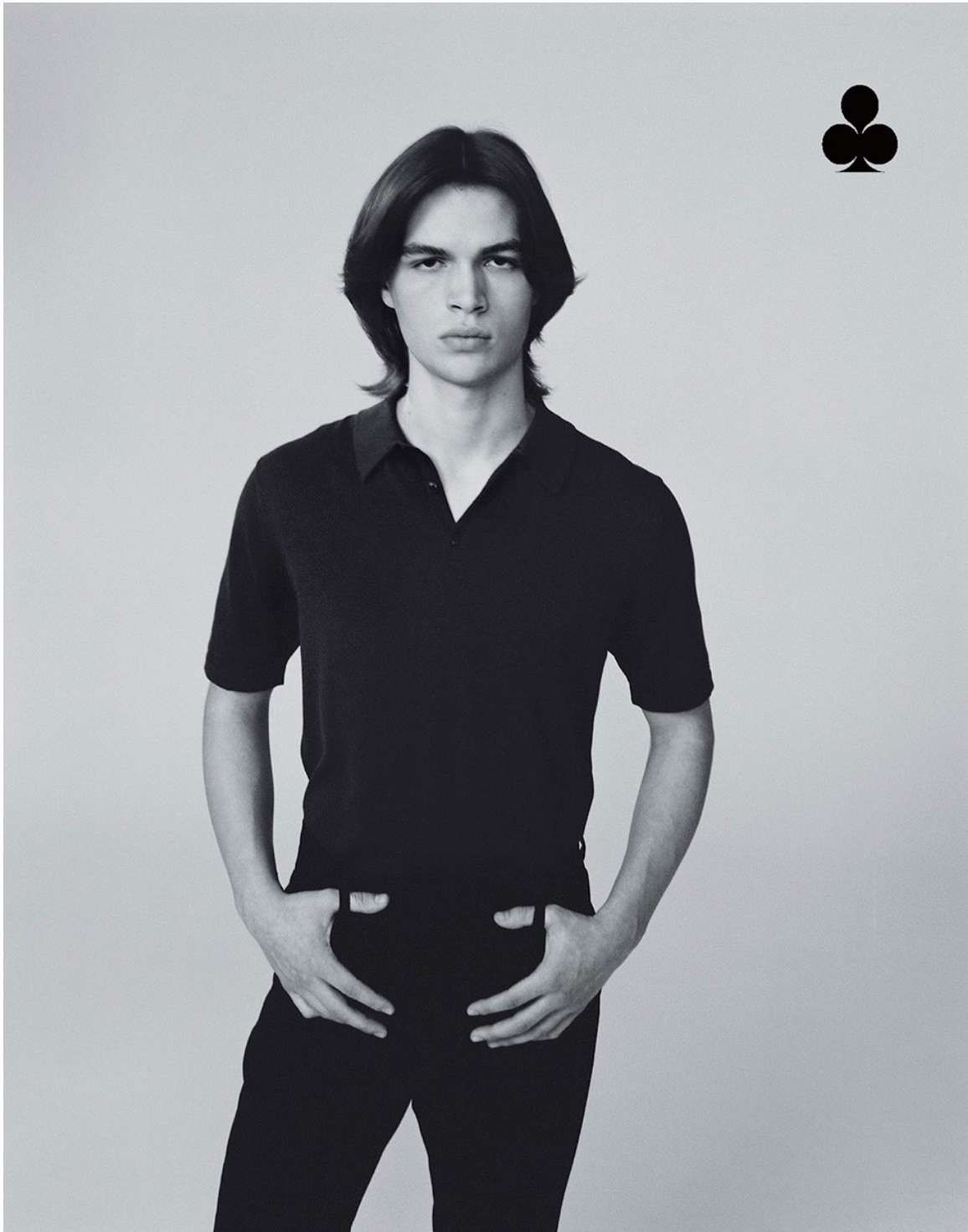
PANTALONI LEO JO BOSCO, SCARPE
NEBOGIARDINI, ANELLO A.P.C.
NELLA PAGINA ACCANTO:
POLO MARCEL REYZ, PANTALONI
DRIES VAN NOTER.

MODELLI: LINCOLN WOELK @ SOHL,
OLA JUWON ANDERSON @ HERDES,
RYAN EGGER, JULIEN OLIVER
@ CLICK, ASHTON SMITH @ STATE.
GROOMING: LUCAS WILSON @
HOME AGENCY. STYLING ASSISTANT:
DIANA DOUGLAS.

Samantha Traina

www.art-dept.com

Art Department



Samantha Traina

www.art-dept.com

Art Department



Samantha Traina

www.art-dept.com

Art Department



Samantha Traina

www.art-dept.com

Art Department



Samantha Traina

www.art-dept.com

Art Department



Samantha Traina

www.art-dept.com

Art Department



Samantha Traina

www.art-dept.com

Art Department



Samantha Traina

www.art-dept.com

Art Department



Samantha Traina

www.art-dept.com

Art Department



Samantha Traina

www.art-dept.com

Art Department



Samantha Traina

www.art-dept.com

Art Department



Samantha Traina

www.art-dept.com

Art Department



above, left to right
jeans from A.P.C.
sweater by KRIS VAN ASSCHE FW15
opposite
jeans from A.P.C.; boots from RED WING

Samantha Traina

www.art-dept.com

Art Department



Samantha Traina

www.art-dept.com

Art Department



Samantha Traina

www.art-dept.com

Art Department



Samantha Traina

www.art-dept.com

Art Department



Samantha Traina

www.art-dept.com

Art Department



Samantha Traina

www.art-dept.com

Art Department



Samantha Traina

www.art-dept.com

Art Department



Samantha Traina

www.art-dept.com

Art Department



Samantha Traina

www.art-dept.com

Art Department



Samantha Traina

www.art-dept.com

Art Department



Samantha Traina

www.art-dept.com

Art Department



Samantha Traina

www.art-dept.com

Art Department



Samantha Traina

www.art-dept.com

Art Department



Samantha Traina

www.art-dept.com

Art Department



Samantha Traina

www.art-dept.com