

# Art Department



Sharon Williams

[www.art-dept.com](http://www.art-dept.com)

# Art Department



Sharon Williams

[www.art-dept.com](http://www.art-dept.com)

# Art Department



Sharon Williams

[www.art-dept.com](http://www.art-dept.com)

# Art Department



Sharon Williams

[www.art-dept.com](http://www.art-dept.com)

# Art Department



Sharon Williams

[www.art-dept.com](http://www.art-dept.com)

# Art Department



Sharon Williams

[www.art-dept.com](http://www.art-dept.com)

# Art Department



Sharon Williams

[www.art-dept.com](http://www.art-dept.com)

# Art Department



Sharon Williams

[www.art-dept.com](http://www.art-dept.com)



# Art Department



Sharon Williams

[www.art-dept.com](http://www.art-dept.com)

# Art Department



Sharon Williams

[www.art-dept.com](http://www.art-dept.com)

# Art Department



Sharon Williams

[www.art-dept.com](http://www.art-dept.com)

# Art Department



Sharon Williams

[www.art-dept.com](http://www.art-dept.com)

# Art Department



Sharon Williams

[www.art-dept.com](http://www.art-dept.com)

# Art Department



Sharon Williams

[www.art-dept.com](http://www.art-dept.com)

# Art Department



Sharon Williams

[www.art-dept.com](http://www.art-dept.com)

# Art Department



Sharon Williams

[www.art-dept.com](http://www.art-dept.com)



# Art Department



Sharon Williams

[www.art-dept.com](http://www.art-dept.com)

# Art Department



Sharon Williams

[www.art-dept.com](http://www.art-dept.com)

# Art Department



Sharon Williams

[www.art-dept.com](http://www.art-dept.com)

# Art Department



Sharon Williams

[www.art-dept.com](http://www.art-dept.com)

# Art Department



Sharon Williams

[www.art-dept.com](http://www.art-dept.com)

# Art Department



Sharon Williams

[www.art-dept.com](http://www.art-dept.com)

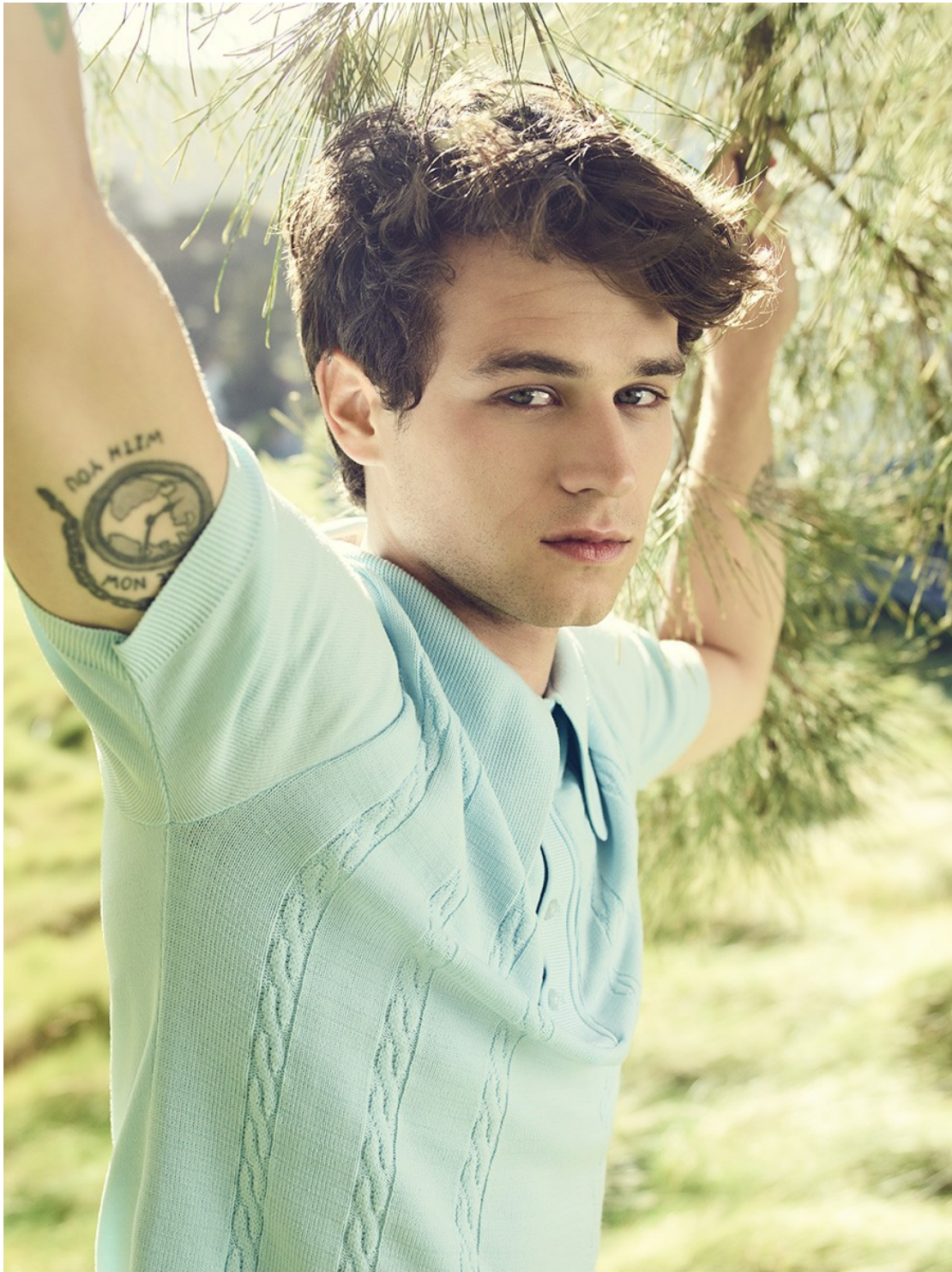
# Art Department



Sharon Williams

[www.art-dept.com](http://www.art-dept.com)

# Art Department



Sharon Williams

[www.art-dept.com](http://www.art-dept.com)



# Art Department



Sharon Williams

[www.art-dept.com](http://www.art-dept.com)

# Art Department



## Sharon Williams

[www.art-dept.com](http://www.art-dept.com)

# Art Department



Sharon Williams

[www.art-dept.com](http://www.art-dept.com)

# Art Department



Sharon Williams

[www.art-dept.com](http://www.art-dept.com)

# Art Department



Sharon Williams

[www.art-dept.com](http://www.art-dept.com)

# Art Department



Sharon Williams

[www.art-dept.com](http://www.art-dept.com)

# Art Department



Sharon Williams

[www.art-dept.com](http://www.art-dept.com)

# Art Department



Sharon Williams

[www.art-dept.com](http://www.art-dept.com)



# Art Department



Sharon Williams

[www.art-dept.com](http://www.art-dept.com)

# Art Department



**CAN SILICON VALLEY  
SAVE SILICON VALLEY?**

**ON SET WITH HBO'S SAVAGE STARTUP  
SATIRE AS THE CREATORS CONTENT  
WITH A 'DARKER SIDE' OF TECH CULTURE  
AND STAR T.J. MILLER'S MESSY EXIT:  
'T.J. WASN'T LEBRON'**

BY LACEY ROSE • PHOTOGRAPHED BY SAMI DRASIN

"Their running joke is about how this is the one show where when the stand-ins go in, the show gets better-looking," he always. Oh that's a handsome bunch, why don't you shoot those guys?" says co-showrunner Alec Berg of stars (from left) Nathan Kress, Modestep and Starz, who were photographed Feb. 12 at Culicchi Studios in Los Angeles.

Styling by Sharon Williams. On Nathan: Tomen suit, vintage hat, Stone Island shoes. On Kress: Vince sweater, vintage shirt, Ace jeans, Cole Haan shoes. On Modestep: Versace shirt, Dolce and Gabbana pants, Cole Haan shoes. On Starz: Tomen shirt, vintage vest and pants, Allen Edmonds shoes.

## Sharon Williams

[www.art-dept.com](http://www.art-dept.com)

# Art Department



Sharon Williams

[www.art-dept.com](http://www.art-dept.com)

# Art Department



Sharon Williams

[www.art-dept.com](http://www.art-dept.com)

# Art Department



Sharon Williams

[www.art-dept.com](http://www.art-dept.com)

# Art Department



Sharon Williams

[www.art-dept.com](http://www.art-dept.com)

# Art Department



Sharon Williams

[www.art-dept.com](http://www.art-dept.com)

# Art Department



Sharon Williams

[www.art-dept.com](http://www.art-dept.com)



# Art Department



Sharon Williams

[www.art-dept.com](http://www.art-dept.com)

# Art Department

**+** **THE GORE PRESIDENCY:** 10 YEARS AFTER BUSH V. GORE, A COUNTER-HISTORY OF AMERICA, by KURT ANDERSEN, JANE SMILEY, WALTER KIRN, KEVIN BAKER—and GLENN BECK

THE YEAR IN CULTURE

NEW YORK

THE NUMBER

**1**

**MOVIE, TV SHOW, ALBUM, NOVEL, PLAY, PAINTING, OPERA, ETC. OF THE YEAR**

BY DAVID EDELSTEIN, EMILY NUSSBAUM, NITSUH ABEBE, SAM ANDERSON, SCOTT BROWN, JERRY SALTZ & JUSTIN DAVIDSON

**AND: RYAN GOSLING & THE NEW (BRAINY) LEADING MEN. MARINA ABRAMOVIC, AVATAR, GATZ—THE YEAR IN HUGE**

WHAT PATTI SMITH, ANNETTE BENING, JAKE GYLLENHAAL, MARY J. BLIGE, MATTHEW WENNER, SUFJAN STEVENS, FRAN LEBOWITZ, AND OTHERS WENT NUTS FOR IN 2010.

\$4.99 USA/CANADA

0 74808 01912 0 5 1

NYMAG.COM

Sharon Williams

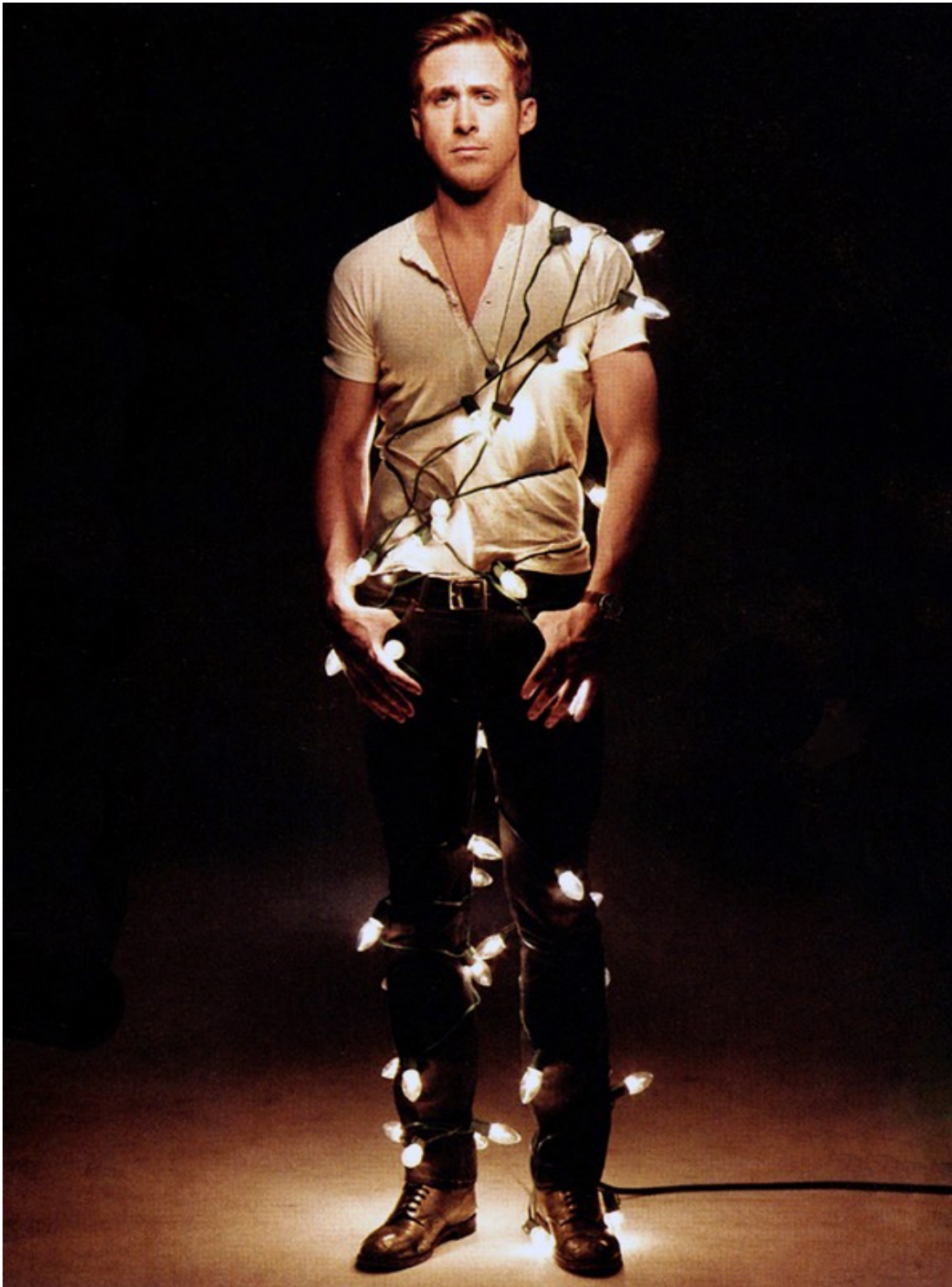
# Art Department



Sharon Williams

[www.art-dept.com](http://www.art-dept.com)

# Art Department



Sharon Williams

[www.art-dept.com](http://www.art-dept.com)

# Art Department



Sharon Williams

[www.art-dept.com](http://www.art-dept.com)

# Art Department



## NOT AN ACTION FIGURE

This year, Ryan Gosling and a band of similarly arty, polymathic weirdos are leading a revolt against the plastic leading man. **By Logan Hill**

**THE MOLOTOV COCKTAIL**—a Stolli bottle filled with flammable strawberry liqueur—was his idea. He wanted it to look legit, so he studied James Nachtwey's documentary photos of rioters in Gaza to get the position of his hand on the bottle just right. The original plan was to toss it at a blown-up photo of himself, but the necessary printer wasn't available. Also, there was the possibility of burning the building down. So he found a target at the end of the Culver City alleyway behind the photographer's studio, practicing for a while with empty bottles. Then, as the camera clicked away, Ryan Gosling lit up and hurried, laughing dermately at the subsequent explosion, before blowing it all out with a fire extinguisher. (Recorded for your pleasure, on the next page.)

Playing the ukulele was Gosling's idea, too.

Like a lot of men in their twenties and thirties (and he's just 30), Gosling is meandering toward adulthood. He has a boyish enthusiasm for risk and danger, and some of his affectations can border on precious. But his charm is too inexorable for us to care. (How else to explain that, even when the Canadian admits to faking his gravelly Brooklyn accent, you like him all the more.) "Ryan is kind and adorable," says actress Kirsten Dunst, "yet also really dark and weird and manipulative. Everything you'd want in an actor."

But in a leading man? Dark and weird have not, historically, been Hollywood's go-to qualities for its top stars. Yet thanks to a new crop of brains, complicated, and highly autonomous actors—James Franco (*Hold, 127 Hours*), Jesse Eisenberg (*The Social Network*), and Joseph Gordon-Livitt (*[500] Days of Summer*, *Hesher*) in America; Tom Hardy (*Bronson*, *Inception*) and Michael Fassbender (*Hunger*, *Fish Tank*) in Europe—a new prototype is seeping into the mainstream. "Some of us are tired of all the sissies

Photographs by Art Streiber

51

## Sharon Williams

[www.art-dept.com](http://www.art-dept.com)

# Art Department



Sharon Williams

[www.art-dept.com](http://www.art-dept.com)

# Art Department



Sharon Williams

[www.art-dept.com](http://www.art-dept.com)



# Art Department



Sharon Williams

[www.art-dept.com](http://www.art-dept.com)

# Art Department



Sharon Williams

[www.art-dept.com](http://www.art-dept.com)

# Art Department



Sharon Williams

[www.art-dept.com](http://www.art-dept.com)

# Art Department



Sharon Williams

[www.art-dept.com](http://www.art-dept.com)

# Art Department



## Sharon Williams

[www.art-dept.com](http://www.art-dept.com)

# Art Department

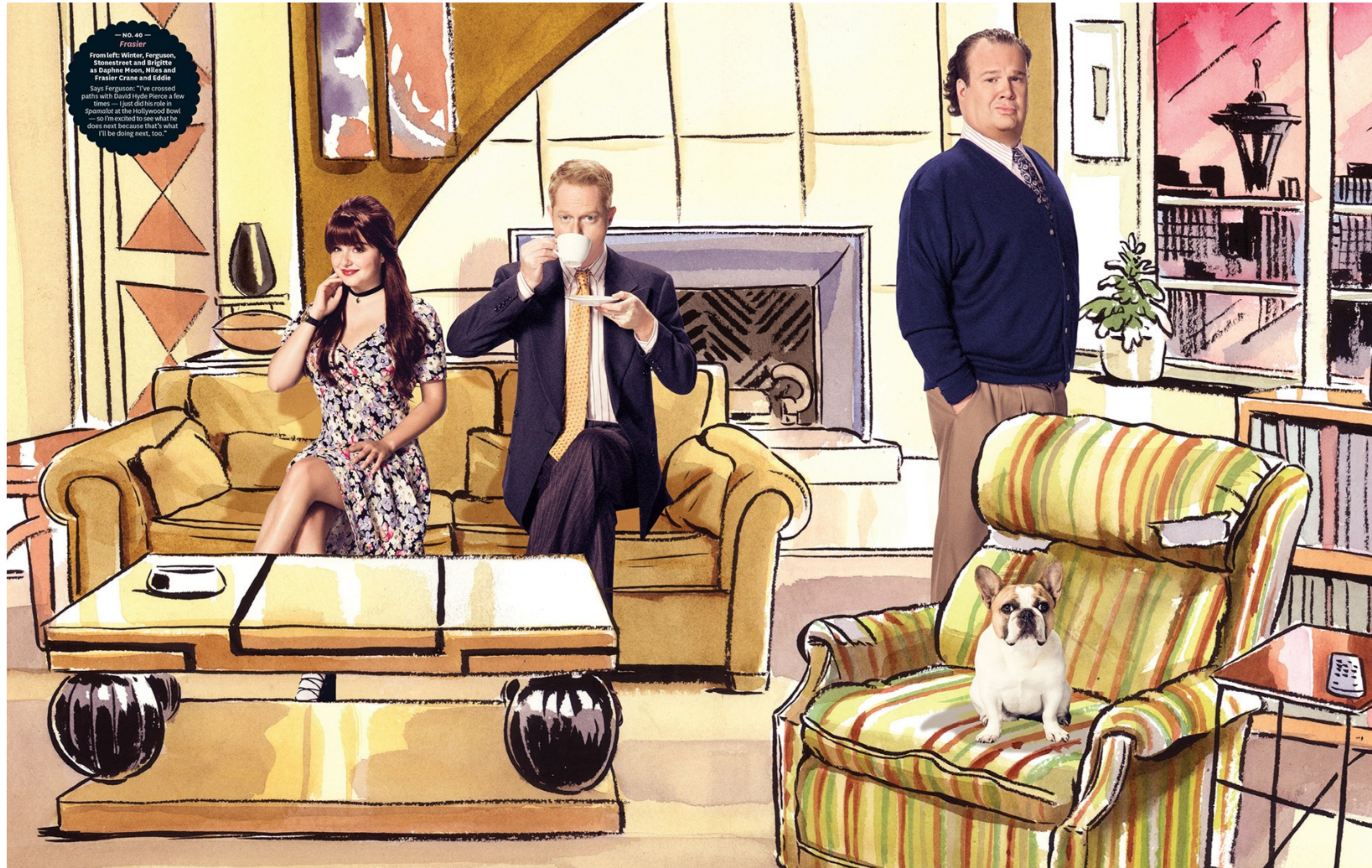


— No. 2 —  
*Breaking Bad*  
Eric Stonestreet (left) as Walter White and Jesse Tyler Ferguson as Jesse Pinkman  
"Anytime you get to see Bry-Bry in his underwear blazing across the desert — ha! — jokes Stonestreet about his favorite *Breaking Bad* scene, referring to the pilot's infamous opening of Bryan Cranston in his tighty-whities."

Sharon Williams

[www.art-dept.com](http://www.art-dept.com)

# Art Department



Sharon Williams

[www.art-dept.com](http://www.art-dept.com)

# Art Department



Sharon Williams

[www.art-dept.com](http://www.art-dept.com)



# Art Department



— NO. 70 —  
*I Dream of Jeannie*  
Gould and Sarah Hyland  
as Major Nelson and Jeannie  
"I wouldn't trust myself with  
a genie," says Gould.  
"As a teenage boy who is very  
irresponsible, I probably  
wouldn't ask for  
world peace. I'd ask  
for a yacht."

## Sharon Williams

[www.art-dept.com](http://www.art-dept.com)

# Art Department



Sharon Williams

[www.art-dept.com](http://www.art-dept.com)

# Art Department



Sharon Williams

[www.art-dept.com](http://www.art-dept.com)

# Art Department



Sharon Williams

[www.art-dept.com](http://www.art-dept.com)

# Art Department



Sharon Williams

[www.art-dept.com](http://www.art-dept.com)

# Art Department



Sharon Williams

[www.art-dept.com](http://www.art-dept.com)

# Art Department



Trench en denim,  
**Burberry**. Top,  
**Alice and Olivia**.

Mise en beauté par  
**Collier Strong** pour  
**L'Oréal Paris** avec  
la crème Age Perfect  
Renaissance  
Cellulaire, le Fond de  
Teint Infaillible Mat  
24h Sable n°20, la  
Mascara False Cils  
Superstar, le Super  
Liner Smokissime  
Taupe et le Rouge à  
Lèvres Color Riche  
rose glacé n°226.  
Coiffure **Steeve**  
**Daviault** pour **L'Oréal**  
**Paris** avec le Spray  
Studio Line Hot&Go  
et la Laque Elnett  
Volume Excess.

Los Angeles,  
avril 2015.

## Sharon Williams

[www.art-dept.com](http://www.art-dept.com)

# Art Department



Los Angeles,  
avril 2015.  
Veste, A.L.C.  
Débardeur, Theory.  
Jupes superposées,  
Leanne Marshall.

## Sharon Williams

[www.art-dept.com](http://www.art-dept.com)



# Art Department



Sharon Williams

[www.art-dept.com](http://www.art-dept.com)

# Art Department



Sharon Williams

[www.art-dept.com](http://www.art-dept.com)

# Art Department



Sharon Williams

[www.art-dept.com](http://www.art-dept.com)

# Art Department



Sharon Williams

# Art Department



Sharon Williams

[www.art-dept.com](http://www.art-dept.com)

# Art Department



Sharon Williams

[www.art-dept.com](http://www.art-dept.com)

# Art Department



Sharon Williams

[www.art-dept.com](http://www.art-dept.com)

# Art Department



Sharon Williams

[www.art-dept.com](http://www.art-dept.com)



# Art Department



Sharon Williams

# Art Department



Sharon Williams

[www.art-dept.com](http://www.art-dept.com)

# Art Department



Sharon Williams

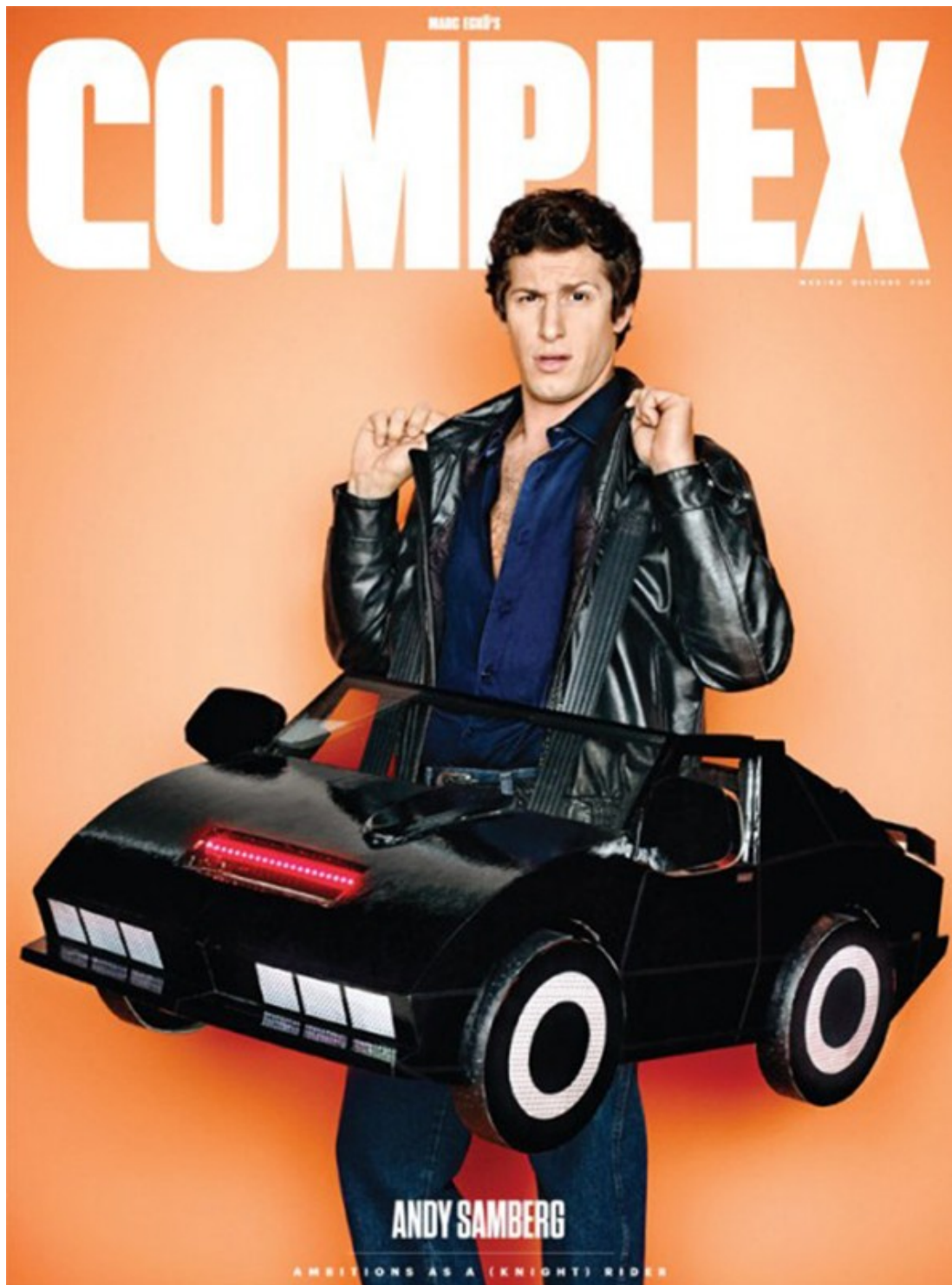
# Art Department



Sharon Williams

[www.art-dept.com](http://www.art-dept.com)

# Art Department



Sharon Williams

# Art Department



Sharon Williams

[www.art-dept.com](http://www.art-dept.com)

# Art Department



Sharon Williams

# Art Department



Sharon Williams

[www.art-dept.com](http://www.art-dept.com)



# Art Department



Sharon Williams

[www.art-dept.com](http://www.art-dept.com)

# Art Department



Sharon Williams

[www.art-dept.com](http://www.art-dept.com)

# Art Department



Sharon Williams

[www.art-dept.com](http://www.art-dept.com)

# Art Department



Sharon Williams

[www.art-dept.com](http://www.art-dept.com)

# Art Department



**VANITY NO LIMITS**

Thomas Jane, 41 anni, protagonista nei panni del gigolò Ray Drecker del telefilm *Hung* - *Ragazzo squillo*: la seconda stagione è in onda su Sky Uno al venerdì in prima serata.

**NON  
CI SONO  
PIÙ  
mezze  
MISURE**

**Thomas Jane**  
non sa davvero che cosa siano. Nel linguaggio (leggete quello che dice su Angelina Jolie, su Julia Roberts e su un suo vecchio amico greco in questa intervista) ma non solo. Se vi ricordiamo, per esempio, che in *Hung*, è un gigolò superdotato, voi a che cosa pensate?

DI ANDREA CARUGATI • FOTO ART STREIBER

Sharon Williams

# Art Department



Sharon Williams

# Art Department



Sharon Williams

[www.art-dept.com](http://www.art-dept.com)

# Art Department



Sharon Williams

[www.art-dept.com](http://www.art-dept.com)



# Art Department

SPECIAL ADVERTISING SECTION

**MARIA BELLO**  
ACTOR, ACTIVIST, LEADER

With powerhouse turns in critically acclaimed films such as *The Cooler* and *A History of Violence*, Maria Bello is well known for her on-screen tenacity—but to learn that the actor's passion translates offscreen as a social justice activist for women's causes is an unveiling of her true spirit. "I accept the Unlimited Spirit Award on behalf of the real heroes—the women all over the world, fighting tirelessly for peace and justice." Up next for Bello: the movie *The Company Men* and continuing to give "a voice to the voiceless" through her work with the Haitian organization Femmes en Democratie.

RADO SWITZERLAND presents

## UNLIMITED SPIRIT

INNOVATIVE. INSPIRATIONAL. UNLIMITED. ON THE FOLLOWING PAGES, RADO CELEBRATES THREE CULTURAL LUMINARIES WHO ARE DEFINED BY NOT DEFINING THEMSELVES AT ALL.

## Sharon Williams

[www.art-dept.com](http://www.art-dept.com)

# Art Department



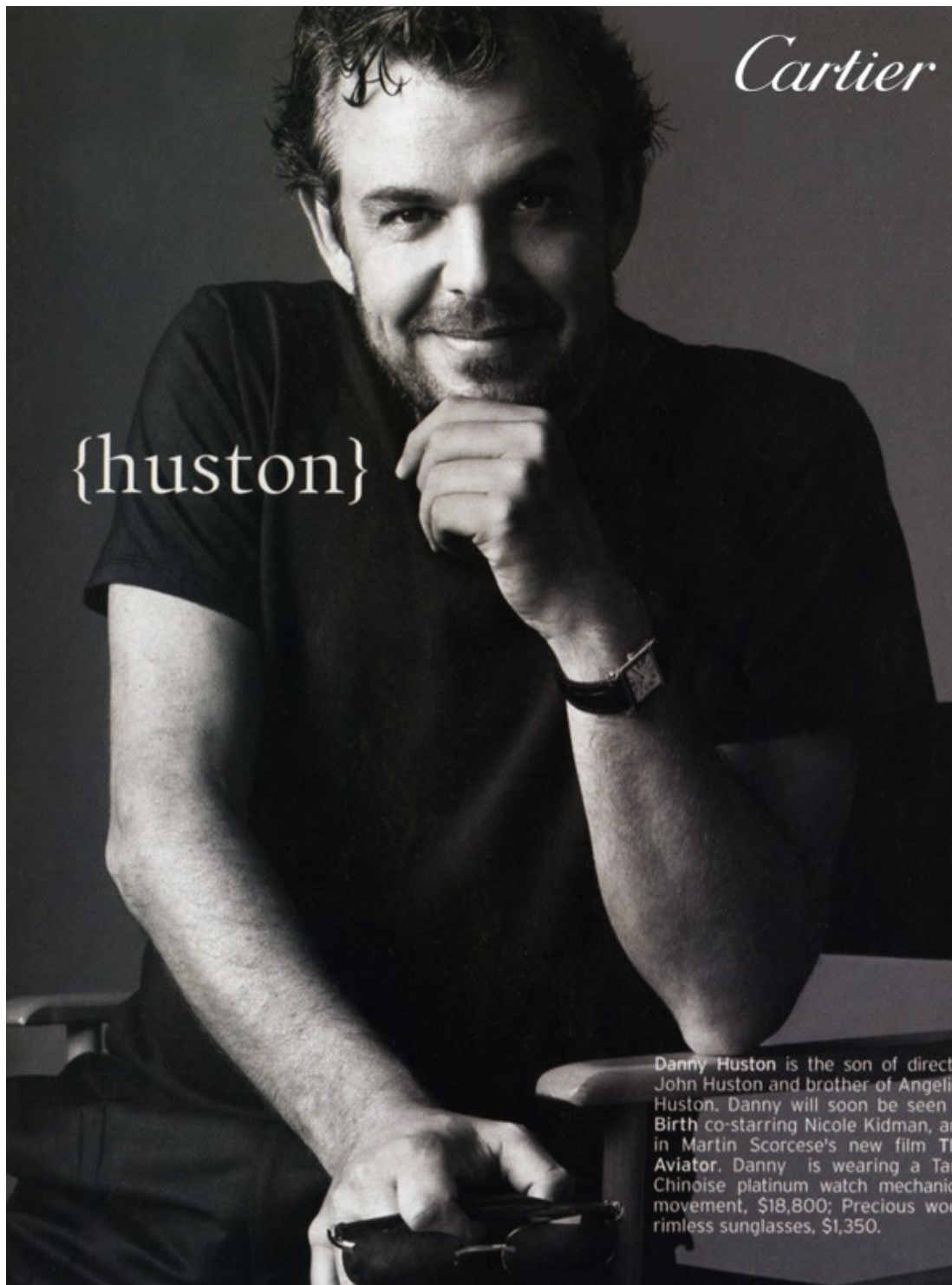
**PAUL HAGGIS**  
FILMMAKER, RISK TAKER, CHAMPION

When a filmmaker draws inspiration "from questions I can't answer, from things that trouble me," unrestrained, no-holds-barred honesty is sure to follow. Indeed, whether writer-director-producer Paul Haggis is tackling the messiness of life in screenplays such as the Oscar® winners *Crash* and *Million Dollar Baby*, or advocating for the children of Haiti, authenticity is his objective. "We as artists look for freedom to do the things we really want to do and express the ideas that might be unpopular or unsettling. That spirit is something we all strive to protect and project with our work." His latest project, the thriller *The Next Three Days*, hits theaters in November.

## Sharon Williams

[www.art-dept.com](http://www.art-dept.com)

# Art Department

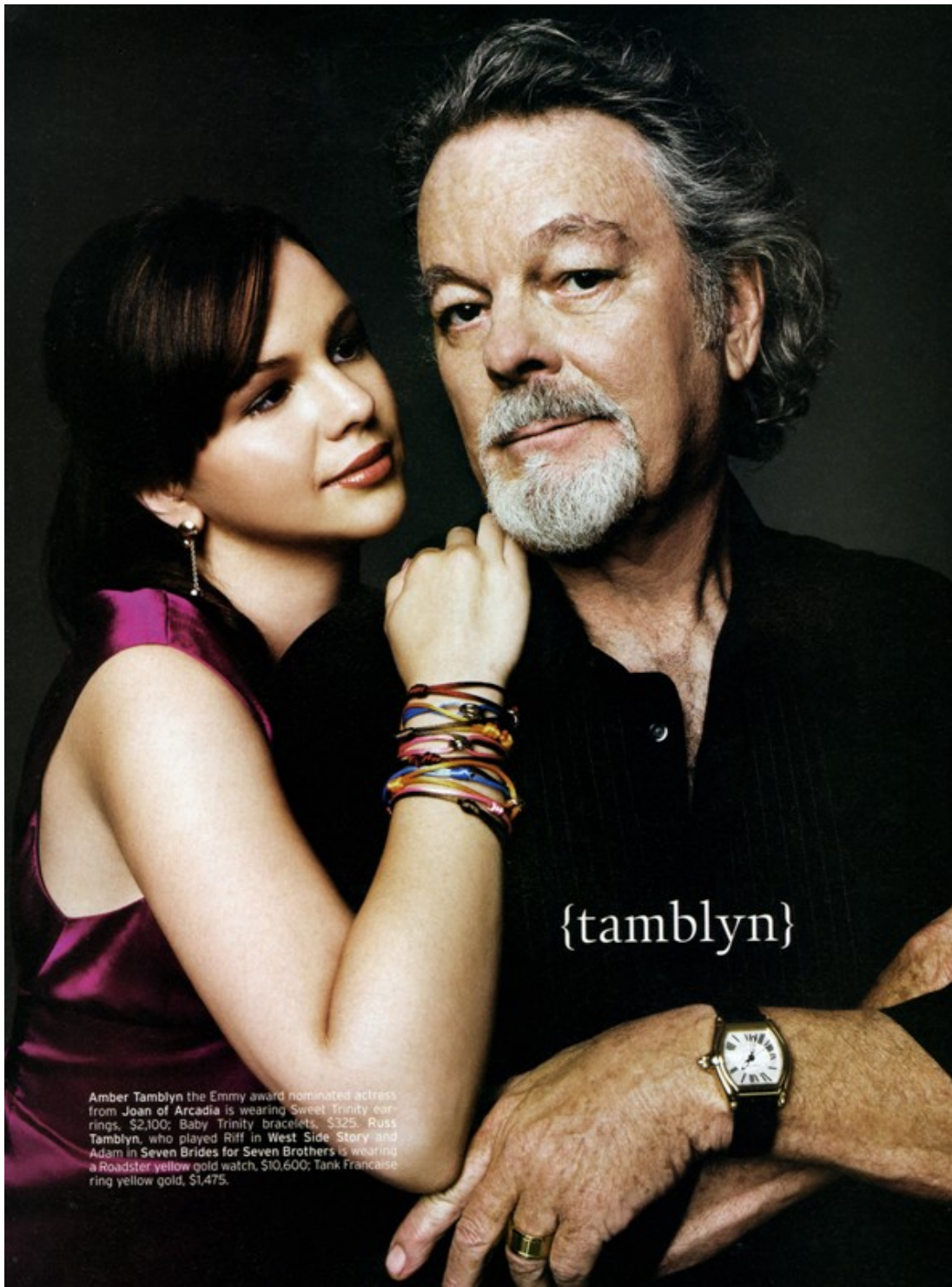


Danny Huston is the son of director John Huston and brother of Angelic Huston. Danny will soon be seen in *Birth* co-starring Nicole Kidman, and in Martin Scorsese's new film *The Aviator*. Danny is wearing a Cartier Chinoise platinum watch mechanical movement, \$18,800; Precious wood rimless sunglasses, \$1,350.

## Sharon Williams

[www.art-dept.com](http://www.art-dept.com)

# Art Department



## Sharon Williams

[www.art-dept.com](http://www.art-dept.com)

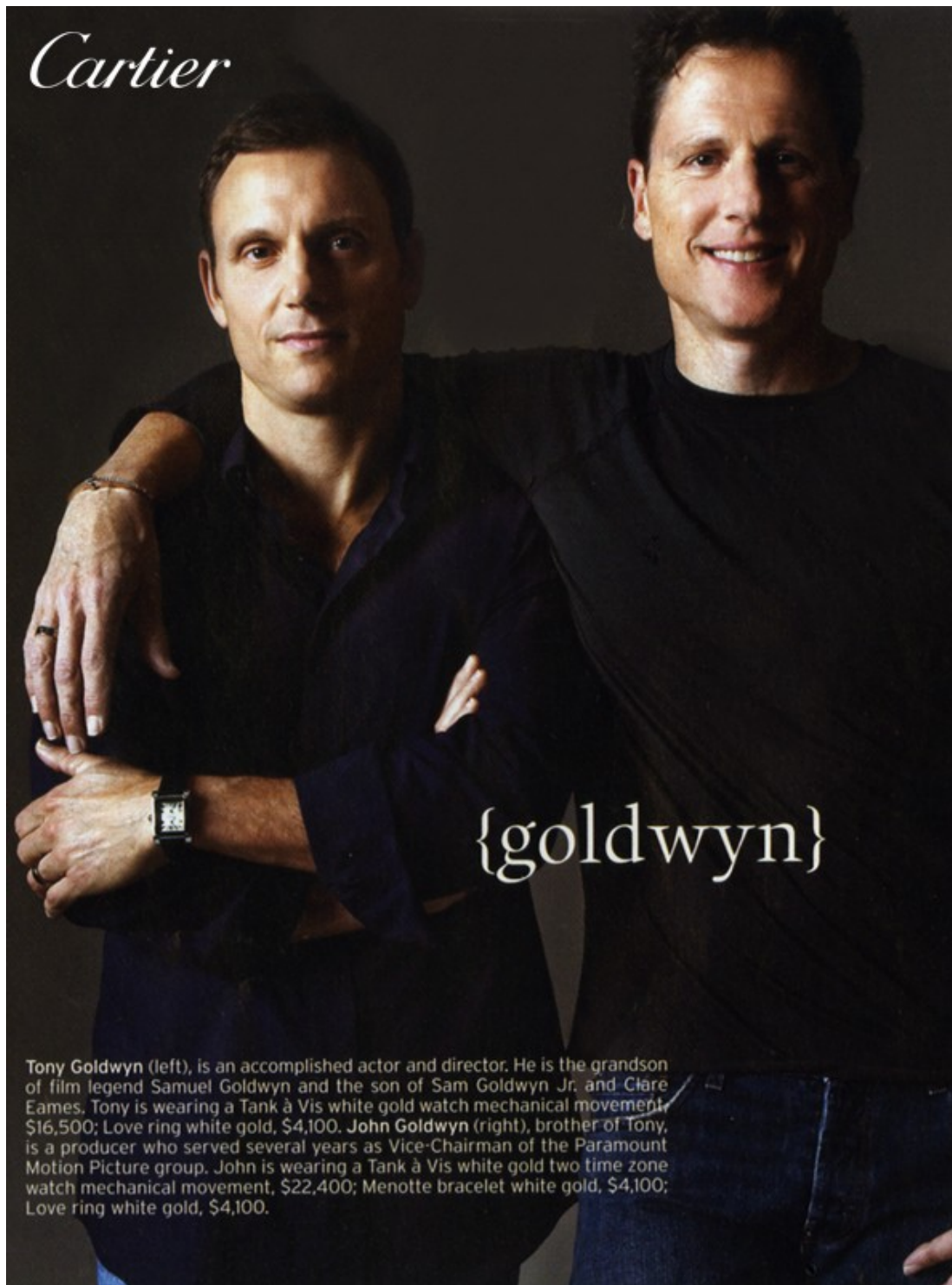
# Art Department



## Sharon Williams

[www.art-dept.com](http://www.art-dept.com)

# Art Department



*Cartier*

{goldwyn}

Tony Goldwyn (left), is an accomplished actor and director. He is the grandson of film legend Samuel Goldwyn and the son of Sam Goldwyn Jr. and Clare Eames. Tony is wearing a Tank à Vis white gold watch mechanical movement, \$16,500; Love ring white gold, \$4,100. John Goldwyn (right), brother of Tony, is a producer who served several years as Vice-Chairman of the Paramount Motion Picture group. John is wearing a Tank à Vis white gold two time zone watch mechanical movement, \$22,400; Menotte bracelet white gold, \$4,100; Love ring white gold, \$4,100.

Sharon Williams

[www.art-dept.com](http://www.art-dept.com)

# Art Department



## Sharon Williams

[www.art-dept.com](http://www.art-dept.com)

# Art Department



Sharon Williams



# Art Department



Sharon Williams

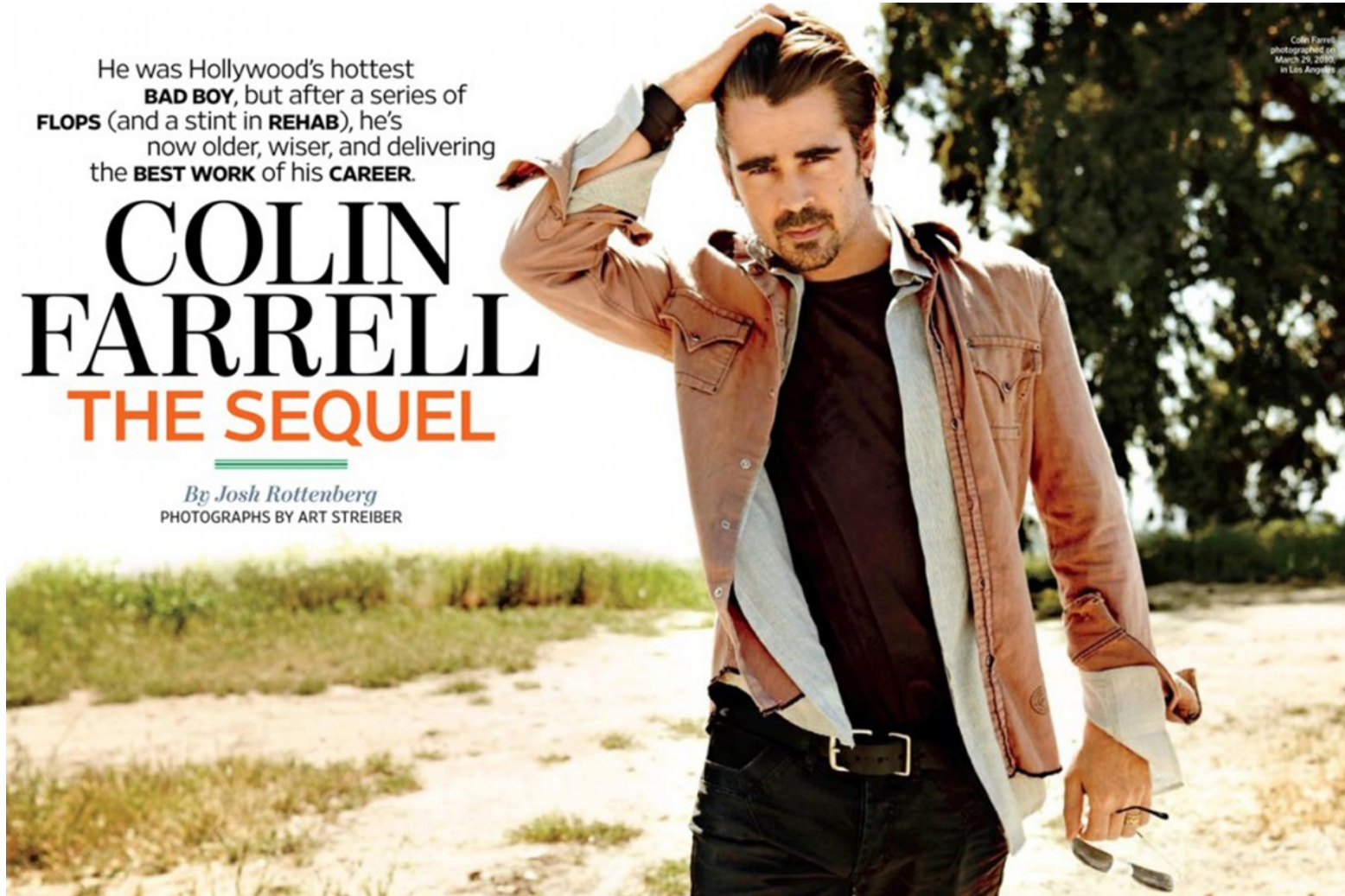
[www.art-dept.com](http://www.art-dept.com)

# Art Department

He was Hollywood's hottest  
**BAD BOY**, but after a series of  
**FLOPS** (and a stint in **REHAB**), he's  
now older, wiser, and delivering  
the **BEST WORK** of his **CAREER**.

## COLIN FARRELL THE SEQUEL

*By Josh Rottenberg*  
PHOTOGRAPHS BY ART STREIBER



## Sharon Williams

[www.art-dept.com](http://www.art-dept.com)

# Art Department



Sharon Williams

[www.art-dept.com](http://www.art-dept.com)

# Art Department



Sharon Williams

[www.art-dept.com](http://www.art-dept.com)

# Art Department



Sharon Williams

[www.art-dept.com](http://www.art-dept.com)

# Art Department



Sharon Williams

[www.art-dept.com](http://www.art-dept.com)

# Art Department



Sharon Williams

[www.art-dept.com](http://www.art-dept.com)

# Art Department



Sharon Williams

[www.art-dept.com](http://www.art-dept.com)



# Art Department

**HOT**  
IN  
CLEVELAND

Do time with friends.

6'0"  
5'0"  
4'0"  
3'0"

All New Episodes  
Weds 10/9c **June 15**

**TV LAND**  
Laugh More

Sharon Williams

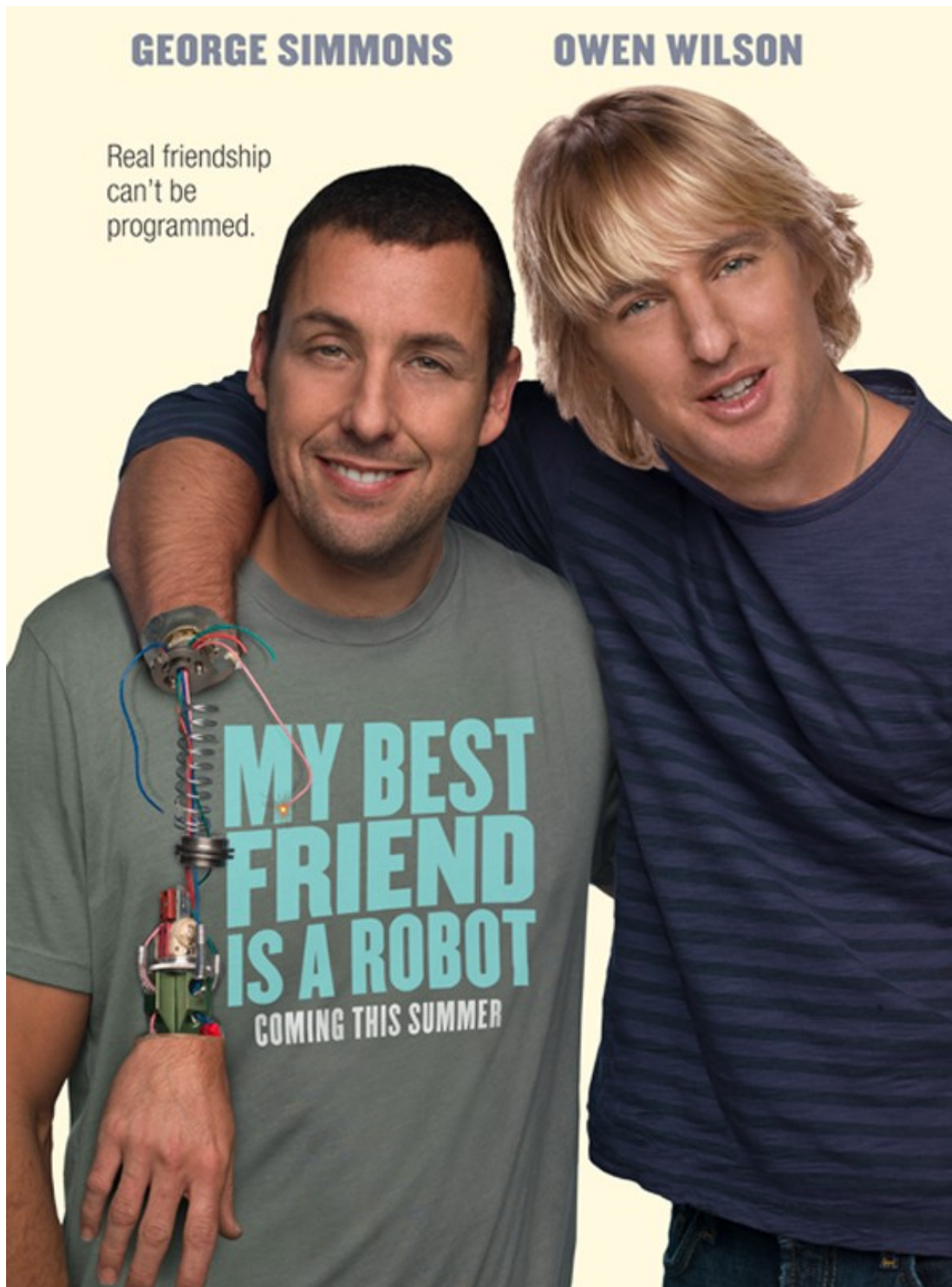
[www.art-dept.com](http://www.art-dept.com)

# Art Department



Sharon Williams

# Art Department



Sharon Williams

# Art Department



Sharon Williams

[www.art-dept.com](http://www.art-dept.com)

# Art Department



Sharon Williams

[www.art-dept.com](http://www.art-dept.com)

# Art Department

## AND RECREATION

C in April 2009, it difference (do we vice-style mock-ratching (an entire it into a park?). uring the comedy and nts in season 2 ler; hello, Rob Lowe s—which follows nope and other the Indiana burg of tics and viewers er yet sweetly then NBC left the le. While fans were g may have proved When *Parks* nabbed the 30 p.m. slot s frustrat-l shows

n  
e  
;

re  
ls is  
p  
the  
Dwyer:  
e Bad News  
quad of misfits  
in the life of our  
re sort of trick play  
e. Don't count us  
. We'll eye-gouge.  
kill us dead!" It's  
t makes us love  
e 101 other things.



REASONS WE LOVE...

AMY POEHLER AS

**Leslie Knope**

**1.** The parks department deputy director might be prime time's most idealistic and, yes, committed character. "What's so fun about playing Leslie is she gets to be really sharply focused on things," notes Poehler. "And like a terrier, she won't let them go."

**2.** Leslie's drab wardrobe feels just right for a small-town

## Sharon Williams

www.art-dept.com

# Art Department

wouldn't feel  
/s you've seen  
e *The Office*,"  
l one of the  
oofy grin."  
sartorial  
which have  
n cap,  
at, and  
boys' suits.  
fused an iPod  
tic vacuum  
DJ Roomba.  
ace a hip-hop/  
erence into  
ng identify-  
! Thugs-  
).  
cere

"Aziz  
stone-  
ghing  
ed

e  
n  
s  
-  
1-



## Sharon Williams

[www.art-dept.com](http://www.art-dept.com)

# Art Department

**45.** to look forward to this: “I have a little bit of an empowered-slut story line,” says Jones. “There are some times where I really just go for it.”

**46.** Watching Ann, who was firmly in control of her previous relationships, get swept off her feet by Chris. “One of our goals this year was to really show off Rashida’s comedy chops,” says Schur. “Rashida is a very intelligent and attractive woman, and it’s hard to knock someone like that off balance. And the way to knock that person off balance is to get Rob Lowe in a relationship with you.”

**47.** How her endearing insecurities surface during her camera chats. “That’s just Rashida awkwardness,” admits Jones. “I end up second-

was one time I thought he farted, but it was me.”



## Sharon Williams



# Art Department



Hollywood's  
Greatest  
UNTOLD  
STORIES

Was it all just a dream? Bob Newhart, the cast, and the writers of *Newhart* revisit the famous finale twist of the beloved comedy.  
by LYNETTE RICE @LYNETTERICE  
photographs by ART STREIBER

William Sanderson,  
Bob Newhart, and Julia Duffy

MAY 11, 2018 EW.COM 20

## Sharon Williams

[www.art-dept.com](http://www.art-dept.com)

# Art Department



Sharon Williams

[www.art-dept.com](http://www.art-dept.com)

# Art Department



Sharon Williams

[www.art-dept.com](http://www.art-dept.com)

# Art Department



Sharon Williams

[www.art-dept.com](http://www.art-dept.com)

# Art Department



Sharon Williams

[www.art-dept.com](http://www.art-dept.com)

# Art Department



Sharon Williams

[www.art-dept.com](http://www.art-dept.com)

# Art Department



Sharon Williams

[www.art-dept.com](http://www.art-dept.com)

# Art Department



Sharon Williams

[www.art-dept.com](http://www.art-dept.com)