

Art Department



Alex T.

www.art-dept.com

Art Department



Alex T.

www.art-dept.com

Art Department



Alex T.

www.art-dept.com

Art Department



Alex T.

www.art-dept.com

Art Department



Alex T.

www.art-dept.com

Art Department



Alex T.

www.art-dept.com

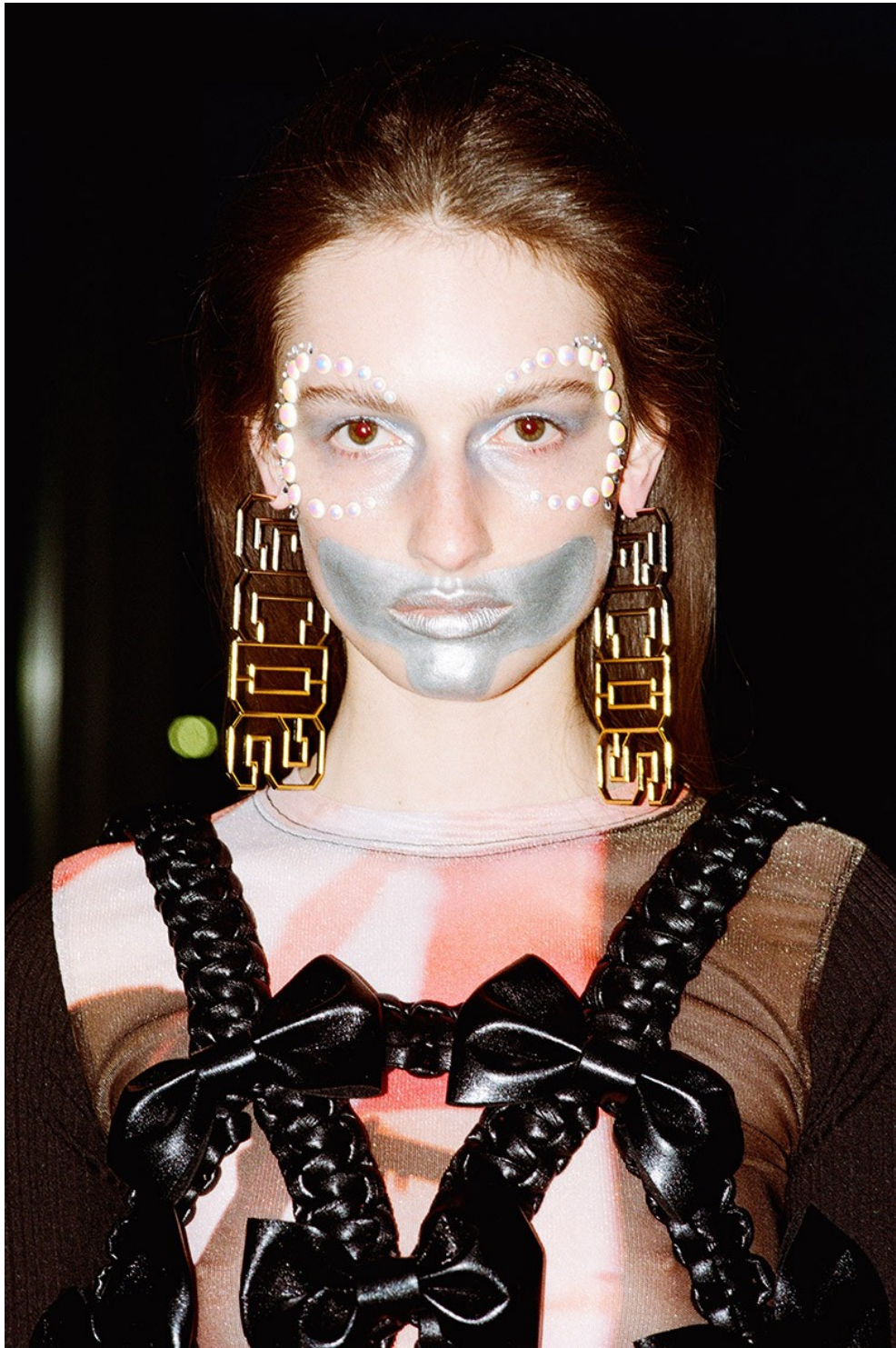
Art Department



Alex T.

www.art-dept.com

Art Department



Alex T.

www.art-dept.com

Art Department



Alex T.

www.art-dept.com

Art Department



Alex T.

www.art-dept.com

Art Department



Alex T.

www.art-dept.com

Art Department



Alex T.

www.art-dept.com

Art Department



Alex T.

www.art-dept.com

Art Department



Alex T.

www.art-dept.com

Art Department

萬中選一
One In The Million

撰文 | Toby Hsu 攝影 | Brendan Wixted 製作 | Alex T 造型 | Virginia Roy
化妝 | Alex T 髮型 | Drew Schaefering for Cruze @cruzebrand 模特兒 | Amira Pinheiro @ Elite NYC

石頁：白色縐紗、灰色毛料西裝外套、灰色毛料及縐紗、麂皮長靴 - all by Michael Kors Collection；金屬戒指 - Lady Grey -



Alex T.

www.art-dept.com

Art Department



Alex T.

www.art-dept.com

Art Department



Alex T.

www.art-dept.com

Art Department



黑色洋裝・Dior；金屬耳環・Lady Grey

Alex T.

www.art-dept.com

Art Department



Alex T.

www.art-dept.com

Art Department



Alex T.

www.art-dept.com

Art Department



Alex T.

www.art-dept.com

Art Department



Alex T.

www.art-dept.com

Art Department



Alex T.

www.art-dept.com

Art Department



Alex T.

www.art-dept.com

Art Department



Alex T.

www.art-dept.com

Art Department



foto
Coni Tarallo

fashion director
Milena Žuravljova

styling
Stefania Chekalina

talent
Róisín Murphy

make-up a vlasy
Alex T

produkce
Lola Balazstena

producent
Alex Diaz

asistent fotografky
Juan Hernandez

asistentky stylistky
Regina Urzaeva, Tyanna
Greenee, Leah David

studio
Riverset Studios

Kabát, HYKE; boty, 31 PHILLIP LIM

Alex T.

www.art-dept.com

Art Department



Alex T.

www.art-dept.com

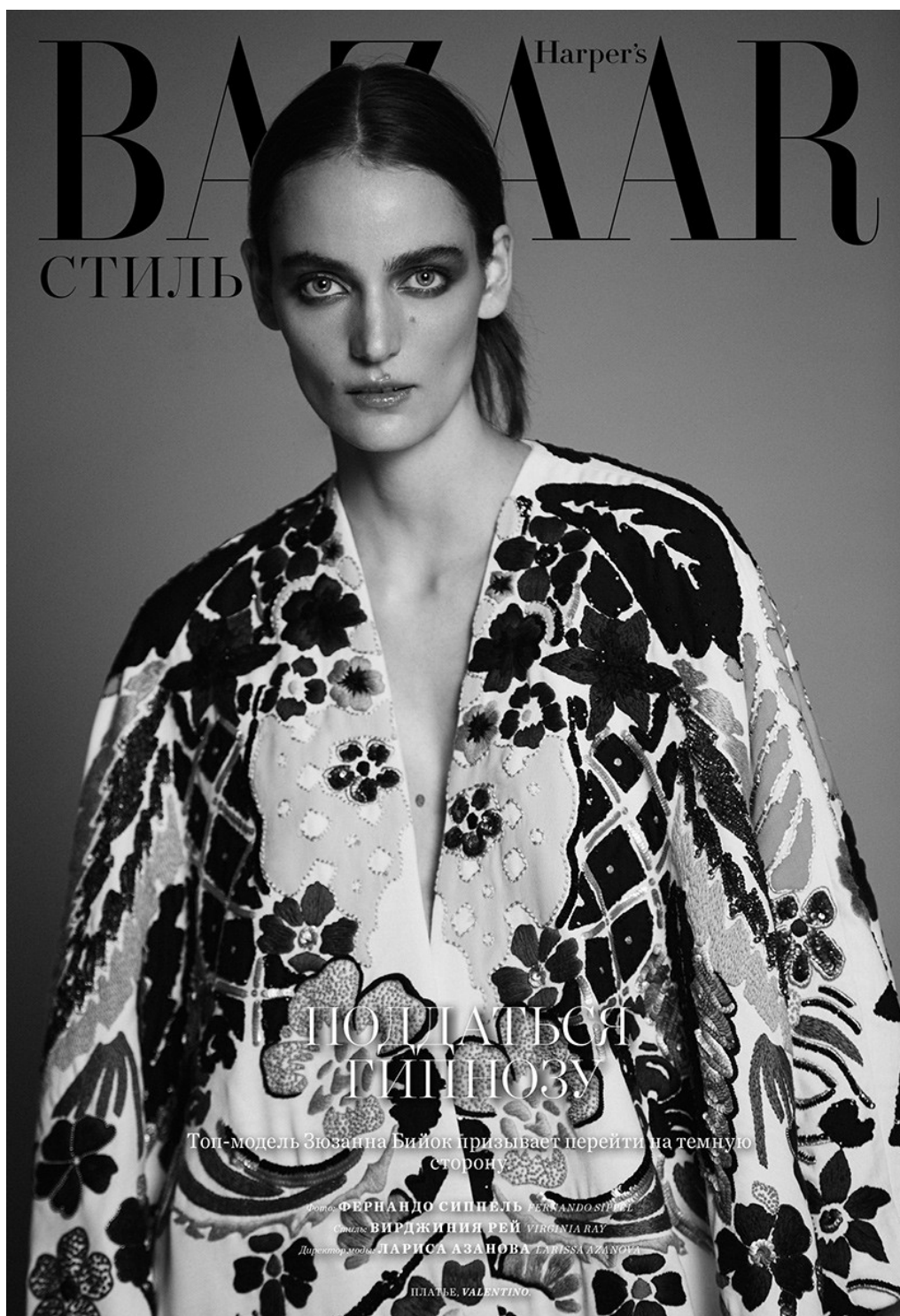
Art Department



Alex T.

www.art-dept.com

Art Department



Alex T.

www.art-dept.com

Art Department



Alex T.

www.art-dept.com

Art Department



На этой странице:
ПЛАТЬЕ, BOTTEGA VENETA;
КОЛЬЦО, LADY GREY.
На странице справа:
ЖАКЕТ, MICHAEL KORS
COLLECTION; ШОРТЫ,
VERSACE; ТУФЛИ, MAX MARA;
КОЛЬЦО, LADY GREY.

Alex T.

www.art-dept.com

Art Department



Alex T.

www.art-dept.com

Art Department

Vpravo: košile, svetr, sako, vše
Maison Margiela; boty, Miu
Miu; náušnice, Erickson
Beamon.



VOGUE

Alex T.

www.art-dept.com

Art Department

Vlevo: top, Dries Van Noten,
náušnice, Erickson Beamon.



Alex T.

www.art-dept.com

Art Department



Alex T.

www.art-dept.com

Art Department



Alex T.

www.art-dept.com

Art Department



Alex T.

www.art-dept.com

Art Department



Alex T.

www.art-dept.com

Art Department



Alex T.

www.art-dept.com

Art Department



Alex T.

www.art-dept.com

Art Department



Alex T.

www.art-dept.com

Art Department



Alex T.

www.art-dept.com

Art Department



Alex T.

www.art-dept.com

Art Department



Alex T.

www.art-dept.com

Art Department



Alex T.

www.art-dept.com

Art Department



Alex T.

www.art-dept.com

Art Department



Alex T.

www.art-dept.com

Art Department



Alex T.

www.art-dept.com

Art Department



Alex T.

www.art-dept.com

Art Department



Alex T.

www.art-dept.com

Art Department



Alex T.

www.art-dept.com

Art Department



Alex T.

www.art-dept.com

Art Department



Alex T.

www.art-dept.com

Art Department



Alex T.

www.art-dept.com

Art Department



Alex T.

www.art-dept.com

Art Department



Alex T.

www.art-dept.com

Art Department



Alex T.

www.art-dept.com

Art Department



Alex T.

www.art-dept.com

Art Department



Alex T.

www.art-dept.com

Art Department



Alex T.

www.art-dept.com

Art Department



Alex T.

www.art-dept.com

Art Department



Alex T.

www.art-dept.com

Art Department



Alex T.

www.art-dept.com

Art Department



Alex T.

www.art-dept.com

Art Department



Alex T.

www.art-dept.com

Art Department



Alex T.

www.art-dept.com

Art Department



Alex T.

www.art-dept.com

Art Department



Alex T.

www.art-dept.com

Art Department



Alex T.

www.art-dept.com

Art Department



Alex T.

www.art-dept.com

Art Department



Alex T.

www.art-dept.com

Art Department



Alex T.

www.art-dept.com

Art Department



Alex T.

www.art-dept.com

Art Department



Alex T.

www.art-dept.com

Art Department



Alex T.

www.art-dept.com

Art Department



Alex T.

www.art-dept.com

Art Department



Alex T.

www.art-dept.com

Art Department



Alex T.

www.art-dept.com

Art Department



Alex T.

www.art-dept.com

Art Department



Alex T.

www.art-dept.com

Art Department



Alex T.

www.art-dept.com

Art Department



Alex T.

www.art-dept.com

Art Department



Alex T.

www.art-dept.com

Art Department



Alex T.

www.art-dept.com

Art Department



Alex T.

www.art-dept.com

Art Department



Alex T.

www.art-dept.com

Art Department



Alex T.

www.art-dept.com

Art Department



Alex T.

www.art-dept.com

Art Department



Alex T.

www.art-dept.com

Art Department



Alex T.

www.art-dept.com

Art Department



Alex T.

www.art-dept.com

Art Department



Alex T.

www.art-dept.com

Art Department



Alex T.

www.art-dept.com

Art Department



Alex T.

www.art-dept.com

Art Department



Alex T.

www.art-dept.com

Art Department



Alex T.

www.art-dept.com

Art Department



Alex T.

www.art-dept.com

Art Department



Women's Fashion Magazine of the Year 2017

SINGAPORE **ELLE** APRIL 2018

REAL SKINCARE SECRETS FROM **CARA DELEVINGNE**

TWO GOOD TO BE TRUE
WHEN FASHION MEETS ART

5
FRIEND REQUESTS TO HIT DELETE

TABITHA NAUSER
BACK IN THE GAME

CAN A **FULLER FOREHEAD** BRING YOU **FAME?**

STYLE'S **NEW TRIBES**
CHOOSE YOURS NOW

8 9867457 031908 >
\$5.50

Alex T.

www.art-dept.com

Art Department



Tweed bralette with fringe, and polyvinyl bobble bracelet with silver-tone chain, both by CHANEL.
Denim skinny jeans, by SANDRO.

Alex T.

www.art-dept.com

Art Department



Jersey-blend
sweatshirt with
crest embroidery
and matching
pants, wool
checked scarf, and
checked rubber
slides, all by
BURBERRY.
Coco Crush
white gold rings,
by CHANEL.

Alex T.

www.art-dept.com

Art Department

“
I DIDN'T
WANT
PEOPLE
TELLING ME
WHO
I SHOULD
BE OR
HOW I
SHOULD
TALK OR
DRESS.
I KNEW I
HAD TO
EXPERIENCE
A FEW
MORE
THINGS,
TO FIGURE
OUT WHO
I WANTED
TO BE.”

Cotton bodysuit with contrasting panels and piping, and detachable tulle midi skirt, both by DIOR.



Alex T.

www.art-dept.com

Art Department



Alex T.

www.art-dept.com

Art Department



皮革袖口装饰紧身针织上衣
黑色皮质短裤
黑色过膝长靴
金属项链
金属腰链
(均为 Saint Laurent)

Alex T.

www.art-dept.com

Art Department



Alex T.

www.art-dept.com

Art Department



WITH THE XXXII
OLYMPIC SUMMER
GAMES FAST
APPROACHING, WE'VE
GOT SPORTS FRONT
OF MIND. THESE
ATHLETIC-INSPIRED
SEPARATES WILL
KEEP YOU LOOKING
COMFORTABLE
AND CONFIDENT

PHOTOGRAPHY BY
JASON LASSWELL

STYLING BY
PAUL FREDERICK

GAME ON

Alex T.

www.art-dept.com

Art Department



Alex T.

www.art-dept.com

Art Department



Alex T.

www.art-dept.com

Art Department



Alex T.

www.art-dept.com

Art Department



Alex T.

www.art-dept.com

Art Department



Alex T.

www.art-dept.com

Art Department



Alex T.

www.art-dept.com

Art Department



Alex T.

www.art-dept.com

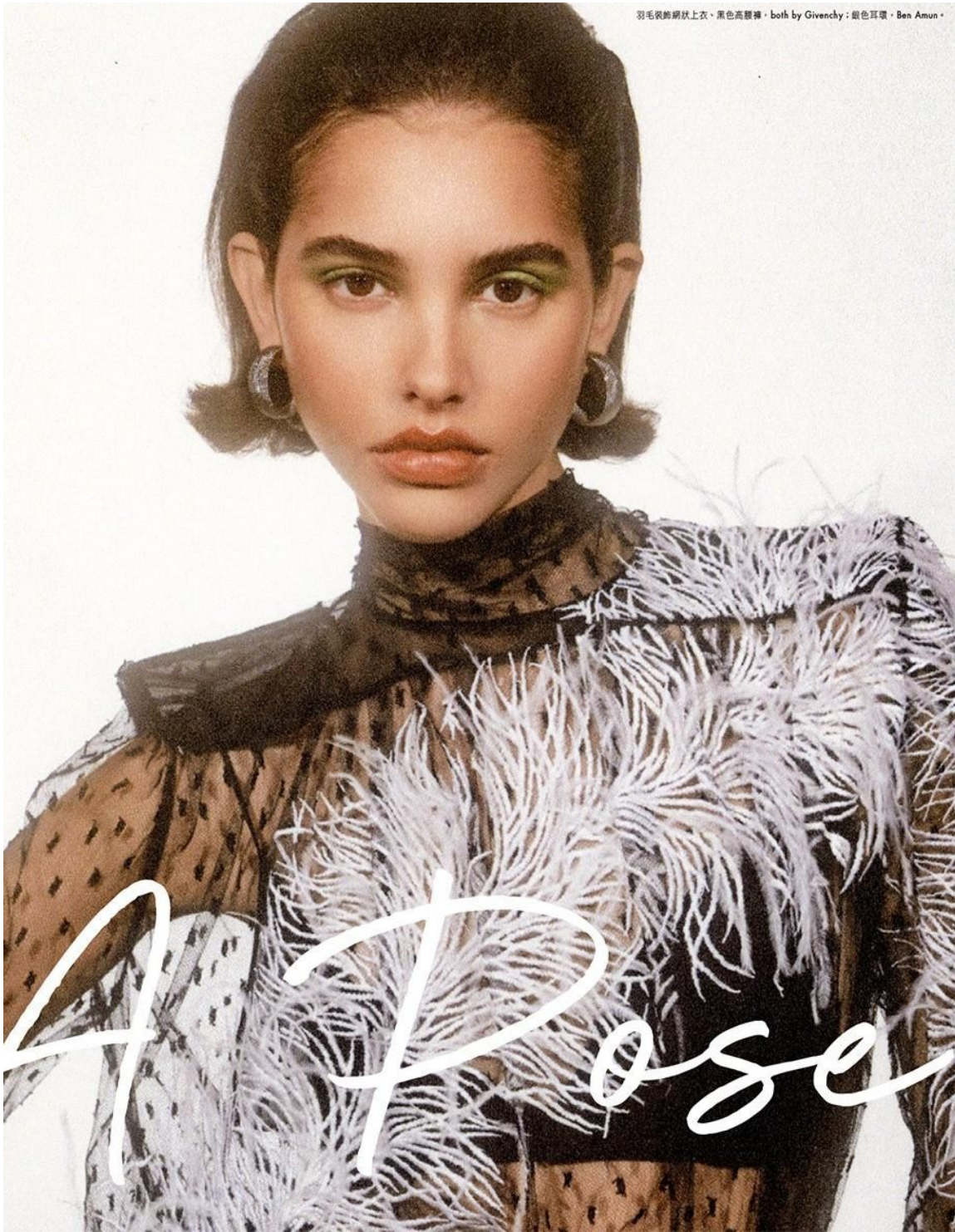
Art Department



Alex T.

www.art-dept.com

Art Department



Alex T.

www.art-dept.com

Art Department



Alex T.

www.art-dept.com

Art Department



Alex T.

www.art-dept.com

Art Department



Alex T.

www.art-dept.com

Art Department



Alex T.

www.art-dept.com

Art Department



Alex T.

www.art-dept.com

Art Department



Alex T.

www.art-dept.com

Art Department



Alex T.

www.art-dept.com

Art Department



Alex T.

www.art-dept.com

Art Department



Alex T.

www.art-dept.com

Art Department



Alex T.

www.art-dept.com

Art Department



Alex T.

www.art-dept.com

Art Department



Alex T.

www.art-dept.com

Art Department



Alex T.

www.art-dept.com

Art Department



Alex T.

www.art-dept.com

Art Department



Alex T.

www.art-dept.com

Art Department



Alex T.

www.art-dept.com

Art Department



Alex T.

www.art-dept.com

Art Department



Alex T.

www.art-dept.com

Art Department



Alex T.

www.art-dept.com

Art Department



Alex T.

www.art-dept.com

Art Department



Alex T.

www.art-dept.com

Art Department



Alex T.

www.art-dept.com

Art Department



Alex T.

www.art-dept.com

Art Department



Alex T.

www.art-dept.com

Art Department



Alex T.

www.art-dept.com

Art Department



Alex T.

www.art-dept.com

Art Department



Alex T.

www.art-dept.com

Art Department



Alex T.

www.art-dept.com

Art Department



Alex T.

www.art-dept.com

Art Department



Alex T.

www.art-dept.com

Art Department



Alex T.

www.art-dept.com

Art Department



Alex T.

www.art-dept.com

Art Department



Alex T.

www.art-dept.com

Art Department



Alex T.

www.art-dept.com

Art Department



Alex T.

www.art-dept.com

Art Department



Alex T.

www.art-dept.com

Art Department



Alex T.

www.art-dept.com

Art Department



Alex T.

www.art-dept.com

Art Department

IN FULL BLOOM

A FRESH *and* CONTEMPORARY TWIST to
FLORAL PATTERNS *from* A BYGONE ERA

PHOTOGRAPHS *by* LENNE CHAI STYLING *by* JENINE OH



THE SUPPORTING ACT

WHEN YOUR BAG
is THE SPOTLIGHT,
MATCH YOUR
CLOTHES IN *the*
SAME TONES

*Jacket, \$3,100, dress, \$995, bag, \$1,100
and boots, \$1,100, by COACH 1941.
Earrings and socks, stylist's own*

Alex T.

www.art-dept.com

Art Department



Alex T.

www.art-dept.com

Art Department



Alex T.

www.art-dept.com

Art Department



Alex T.

www.art-dept.com

Art Department



Alex T.

www.art-dept.com

Art Department



Alex T.

www.art-dept.com

Art Department



Alex T.

www.art-dept.com

Art Department



Alex T.

www.art-dept.com

Art Department



Alex T.

www.art-dept.com

Art Department



Alex T.

www.art-dept.com

Art Department



Alex T.

www.art-dept.com

Art Department



Alex T.

www.art-dept.com

Art Department

ELLE FASHION

YOUR PERSONAL PLAYBOOK ON WHAT TO WEAR... AND JUST HOW TO WEAR IT

PHOTOGRAPHY SHAWN PAUL TAN STYLING DARYL ALEXIUS YEO MAKEUP ALEX T USING NUDESTIX HAIR JUNZ LOKE/HAIRLOOM SALON DIGITAL OPERATOR YANN CLOITRE/ATTIC DIGITAL PHOTOGRAPHY ASSISTANCE MEVIN LEONG FASHION ASSISTANCE ELIUE TAN & JEREMY TAN MODELS NANA/MANNIGUIN & KARIN/AVE



EURO CLASH

By distorting our notion of uncool, Demna Gvasalia continues to earn top (dollar) billing with his abstract euro-printed two-piece shirts at Balenciaga. Money, indeed, makes the world go around.

Silk printed short-sleeved shirt with attached long-sleeved shirt, and brass hoop earrings, both by **BALENCIAGA**. Rubber boots, stylist's own.

Alex T.

www.art-dept.com

Art Department



Pleated high-collar cotton blouse with metal details, and resin earring with gold-tone chain, both by CHLOÉ.

Alex T.

www.art-dept.com

Art Department



Zip-front nylon top,
nylon trousers, jacquard
floral-motif coat with mink
collar, and New Minibag
calfskin crossbody with
gold-tone chain sling,
all by **BALLY**.

Alex T.

www.art-dept.com

Art Department



Alex T.

www.art-dept.com

Art Department



Alex T.

www.art-dept.com

Art Department



Alex T.

www.art-dept.com

Art Department



Alex T.

www.art-dept.com

Art Department



Alex T.

www.art-dept.com

Art Department



Silk jacquard V-necked maxi dress with contrasting collar, by **FENDI**.

(Opposite) Tweed open coat with fringing, by **CHANEL**. Cotton leggings and calfskin kitten-heeled mules, both by **BALENCIAGA**.

Alex T.

www.art-dept.com

Art Department



Nylon-blend multi-tiered
ruffled knee-length
dress, by **MSGM**.
Rubber wire earrings,
by **BALENCIAGA**.

Alex T.

www.art-dept.com

Art Department



Silk tie-dye
shirt-dress,
by CÉLINE.
Elastane cap
with glass-pearl
embellishments
and gold-tone
chain strap,
by GUCCI.

Alex T.

www.art-dept.com

Art Department



大尺寸的手袋、运动感鞋袜，
新概念的珠宝腕表，
这些青春又独具态度的配饰在
年轻纽约客的穿搭中真实存在，
点亮着她们的日常细节。
在新晋维密超模Frida Aasen的
演绎下，时髦配饰完美
融入纽约下城和布鲁克林的
活力气氛中，呈现出活力面貌。

摄影/摄像：PRIMO XUE 造型/编采：莫文杰
模特：FRIDA AASEN (WOMEN)
化妆：ALEX T 发型：GONN KINOSHITA
美甲：YUKO (ATEJER)
制片/选角：ALEX T 视觉剪辑：小文

Frida Aasen
YOUNG
New Yorker
青春在纽约

100 | MING

Alex T.

www.art-dept.com

Art Department



Alex T.

www.art-dept.com

Art Department



Alex T.

www.art-dept.com

Art Department



Alex T.

www.art-dept.com

Art Department



Alex T.

www.art-dept.com

Art Department



Alex T.

www.art-dept.com

Art Department



Alex T.

www.art-dept.com

Art Department

ELLE FASHION

YOUR PERSONAL PLAYBOOK ON WHAT TO WEAR... AND JUST HOW TO WEAR IT

PHOTOGRAPHY SHAWN PAUL TAN STYLING DARYL ALEXIUS YEO HAIR JUNZ LOKE/HAIRLOOK MAKEUP ALEX T USING NUDESTIX PHOTOGRAPHY ASSISTANCE MELVIN LEONG & TEO REN JIE FASHION ASSISTANCE JEREMY TAN, ONG HUIYING & LOW RIN MODEL NODA/MANNEQUIN



GARDEN OF EDEN

Alessandro Michele's Fall/Winter collection took on an otherworldly touch with this sheer garment bag-inspired netting to protect your ensemble.

Tulle garment bag-inspired overcoat with zipper, by **GUCCI**.

Alex T.

www.art-dept.com

Art Department

Cashmere ribbed turtleneck pullover, by **SALVATORE FERRAGAMO**. Lycra bikini bottom, by **H&M**.

(Opposite) Cotton ribbed tank, and wool wide-legged trousers, both by **SALVATORE FERRAGAMO**. Calfskin earrings with cotton top-stitching, by **LOEWE**.



Alex T.

www.art-dept.com

Art Department



Wool knit backless turtleneck top, by **COS**. Calfskin earrings with cotton top-stitching, by **LOEWE**.

(Opposite) Silk dress with fringing and lace panels, by **GIVENCHY**.

Alex T.

www.art-dept.com

Art Department



Alex T.

www.art-dept.com

Art Department



Alex T.

www.art-dept.com

Art Department



Alex T.

www.art-dept.com

Art Department



Alex T.

www.art-dept.com

Art Department



Alex T.

www.art-dept.com

Art Department



Alex T.

www.art-dept.com

Art Department



Silk top with ruffled
sleeves, by NOTES DU
NORD. Cotton lace
pinafore, by CHANEL.

Alex T.

www.art-dept.com

Art Department



Alex T.

www.art-dept.com

Art Department

B la Fashion

無造作

隨性是一種風格，女人不做作，最美。

撰文 | Toby Hsu 造型 | Cheryl Tan 化妝 | Alex T @alexbeauty 髮型 | Cara Clyne
攝影 | Jeremy Choh 模特兒 | Fu Yao @IMG 製作 | Alex T @alexbeauty
幾何圖形長大衣、白色皮革字母裝飾肩帶、字母寬肩帶，all by Dior

Alex T.

www.art-dept.com

Art Department



Alex T.

www.art-dept.com

Art Department



Alex T.

www.art-dept.com

Art Department



Alex T.

www.art-dept.com

Art Department



Alex T.

www.art-dept.com

Art Department



For Spring/Summer 2018, we're dreaming up an escape into the wild with luxurious textures in the guises of lightweight kaftans, pastel gingham prints and embellished knitwear.

PHOTOGRAPHY SHAWN PAUL TAN

STYLING DARYL ALEXIUS YEO

Alex T.

www.art-dept.com

Art Department



(From left) Nylon windbreaker jacket with hood, silk trousers, scarf top with woven calfskin ties, and silk trousers, all by **TOD'S**.

Alex T.

www.art-dept.com

Art Department



Alex T.

www.art-dept.com

Art Department



Bella

Fashion

經典格紋

格紋不敗，是你衣櫃裡必備的經典元素。

撰文 | Toby 攝影 | Danyil Alexus Yoo & Serina Chan 格紋及髮型 | Alex T. @ alextobias
攝影 | Sharan Paul Tan @ sharynpaultan 製作 | Alex T. @ alextobias | 模特兒 | Njaya Dong / Marnie.com 攝影助理 | Malyn Lopez
高領上衣、格紋西裝外套、格紋裙 by Fendi

Alex T.

www.art-dept.com

Art Department



Alex T.

www.art-dept.com

Art Department



Alex T.

www.art-dept.com

Art Department



Cotton shirt, and
cotton wide-legged
trousers, both
by **HERMÈS**.
Wool-blend open
vest with side
front pockets, by
CÉLINE. Gold-
tone monkey ring,
by **GUCCI**. Wool
tie, stylist's own.

Alex T.

www.art-dept.com

Art Department



White pinstriped cotton cropped shirt, by **OFF-WHITE**. Black cotton-blend boiler suit with contrasting nylon patchwork, by **PRADA**. Black cotton neck scarf, by **DIOR HOMME**.

(Opposite, from left) Cotton shirt, checked wool-blend blazer, and matching cropped trousers, all by **GUCCI**. Calfskin loafers with beaded embellishments, by **DOLCE & GABBANA**. Cotton shirt with contrasting collar, by **PRADA**. Wool windowpane checked double-breasted coat, and matching trousers, both by **DIOR HOMME**. Calfskin lace-up high-top sneakers with croc-effect, by **LOEWE**. Cotton-blend checked blazer, and matching trousers, both by **SANDRO**. Calfskin Oxford shoes, by **PRADA**. Cotton socks (worn throughout), stylist's own.

Alex T.

www.art-dept.com

Art Department



Alex T.

www.art-dept.com

Art Department



(From left) White cotton shirt, by **ACNE STUDIOS** from **Net-a-porter.com**. Grey windowpane checked cotton trousers, by **OFF-WHITE**. Maroon elastane suspenders, by **FENDI**. Maroon shirt with zip-front closure, by **HERMÈS**. Black cotton trousers with black chain link detail, by **OFF-WHITE**. Silver-tone chain necklace, by **GUCCI**.

Alex T.

www.art-dept.com

Art Department



Sheer silk-chiffon dress with thigh-high slit, cotton bra and matching underwear, and calfskin waist belt, all by **DIOR**. Gold-tone nail earring, by **GIVENCHY**. Calfskin pump with mesh netting, by **JIMMY CHOO**.

Alex T.

www.art-dept.com

Art Department



Cotton-blend hooded
jacket with zipped
front, by CHANEL.
Glass-stone embellished
necklace, by GUCCI.

Alex T.

www.art-dept.com

Art Department



Lambskin toga
dress with gathered
detail, by **STELLA
MCCARTNEY**. Glass-
pearl beaded earring with
glass-stone embellishments,
by **CHANEL**. Polyester
fringed knee boots,
by **JIMMY CHOO**.

Alex T.

www.art-dept.com

Art Department



(From left) Wool-blend tapered trousers, by **DIOR HOMME**. Lambskin blouse with box-pleated ruffled front, and lambskin shorts, both by **SAINT LAURENT BY ANTHONY VACCARELLO**. Glass-pearl beaded earring with glass-stone embellishments, by **CHANEL**.

HAIR: **KEN HONG / VOLVE**, USING **GO DWELL MAKEUP ALEX T.** USING **NUDESTY DIGITAL**. PHOTOGRAPHY: ASSISTANCE: **MELVIN LEONG**. HAIR ASSISTANCE: **AGE CHAI**. FASHION ASSISTANCE: **RIN LOW, IWAN TAN & JEREMY TAN**. MODELS: **AMY & ELIZA / MANNING / ANKA, QUENTIN & GYLES / AVE**. LOCATION: **DE DIAMONDS**

Alex T.

www.art-dept.com

Art Department



Alex T.

www.art-dept.com

Art Department



Alex T.

www.art-dept.com

Art Department



Alex T.

www.art-dept.com

Art Department



Alex T.

www.art-dept.com

Art Department



粉紅色西裝外套、粉紅色西裝寬褲，both by S. J. Philip Lim

Alex T.

www.art-dept.com

Art Department



水鑽裝飾刑刑連身褲裝、寬版腰帶、酒紅色皮草大衣，all by Michael Kors Collection；
深藍色高筒襪靴，Giuseppe Zanotti Design。



皮草背心，23區。

Alex T.

www.art-dept.com

Art Department



高紅色絨呢大衣、深紅色羊羔毛大衣 - both by Michael Kors Collection | 高筒靴 - Giuseppe Zanotti Design

Alex T.

www.art-dept.com

Art Department



Alex T.

www.art-dept.com

Art Department



Alex T.

www.art-dept.com

Art Department



亮片装饰洋装 · Diane Von Furstenberg

Alex T.

www.art-dept.com

Art Department



Alex T.

www.art-dept.com

Art Department



黑色皮革肩帶、黑色毛料水手領洋裝、
棕色鍊帶包，all by Dior



翻毛絨裙外套，Coach

Alex T.

www.art-dept.com

Art Department



Alex T.

www.art-dept.com

Art Department



Alex T.

www.art-dept.com

Art Department



Alex T.

www.art-dept.com

Art Department



Alex T.

www.art-dept.com

Art Department



Alex T.

www.art-dept.com

Art Department



Alex T.

www.art-dept.com

Art Department



Alex T.

www.art-dept.com

Art Department



Alex T.

www.art-dept.com

Art Department



Alex T.

www.art-dept.com

Art Department



Alex T.

www.art-dept.com

Art Department



Alex T.

www.art-dept.com

Art Department



Alex T.

www.art-dept.com

Art Department



Alex T.

www.art-dept.com

Art Department



Alex T.

www.art-dept.com

Art Department



Alex T.

www.art-dept.com

Art Department



Alex T.

www.art-dept.com

Art Department



Alex T.

www.art-dept.com

Art Department



Alex T.

www.art-dept.com

Art Department



Alex T.

www.art-dept.com

Art Department



Alex T.

www.art-dept.com

Art Department



Alex T.

www.art-dept.com