

Art Department



April Greaves

www.art-dept.com

Art Department



April Greaves

www.art-dept.com

Art Department



SPOTLIGHT

TRIPLE THREAD

Among the most autobiographical of Edward Albee's plays, *Three Tall Women* makes its Broadway debut this spring. The production—directed by Joe Mantello and produced by Scott Rudin—is an aching reflection, featuring Alison Pill, Laurie Metcalf, and the inimitable Glenda Jackson, who is returning to the Great White Way after a 20-year absence, during which she served as a member of the British Parliament. “It is so uncommon to have ‘three tall women’ exist in the theater,” Metcalf observes. “It’s interesting because built into this play is a kind of hierarchy. We all bow to Glenda Jackson—I just want to be present to observe what she’s doing.”

The Pulitzer Prize–winning play captures three women in various stages of life: youth, middle age, and old age. It is a surgically precise portrait of a woman’s relationship with herself—an excavation turned meditation on life as it nears its end. “Who we are, who we have become, and how we remember ourselves,” Pill says.

Albee famously wrote fiercely strong, if sometimes terrifying, female characters, drawing inspiration from his adoptive mother, Frances, who was both his monster and, in-

evitably, his muse. The playwright, who died in 2016 at age 88, allows for the darkly comic respect of a mother’s vulnerability and the burden of a life spent being vilified for her indomitable spirit. “He and his adoptive mother didn’t get on,” says Jackson. “I think I’m putting it rather mildly. In fact, Albee’s introduction to the play terminates with him saying he only met anyone who could abuse her, though many who have seen the play find her fascinating. He catinotes by saying, ‘Heaven, what have I done!’” —A. M. HOWES

PHOTOGRAPH BY MACKENZIE STROM

Laurie Metcalf, Glenda Jackson, and Alison Pill, photographed at Tom Jack City.

Metcalf wears a dress by Beebe, designed by Jeffrey G. Co. Jackson wears a top by Beebe. Metcalf wears a top by Jimmy Choo, shoes by Stephen Burrows. Pill wears a dress by Oscar de la Renta, shoes by Anne Corbelli.

PHOTOGRAPH BY MACKENZIE STROM

April Greaves

www.art-dept.com

Art Department



April Greaves

www.art-dept.com

Art Department



April Greaves

www.art-dept.com

Art Department



April Greaves

www.art-dept.com

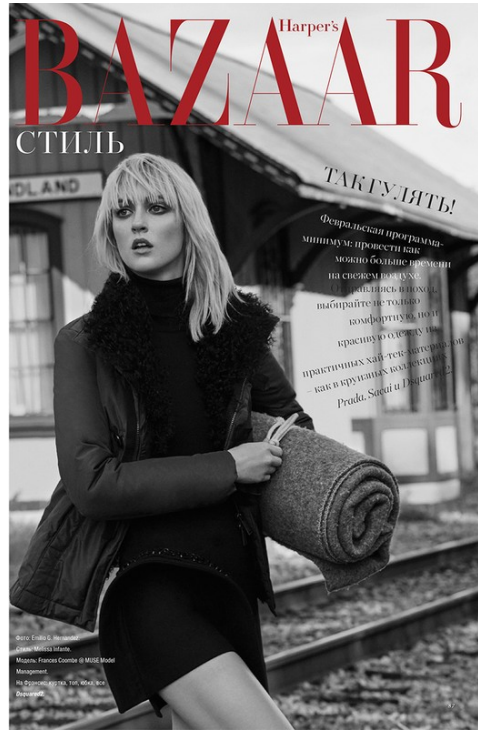
Art Department



April Greaves

www.art-dept.com

Art Department



April Greaves

www.art-dept.com

Art Department



April Greaves

www.art-dept.com

Art Department



April Greaves

www.art-dept.com

Art Department



April Greaves

www.art-dept.com

Art Department



April Greaves

www.art-dept.com

Art Department



April Greaves

www.art-dept.com

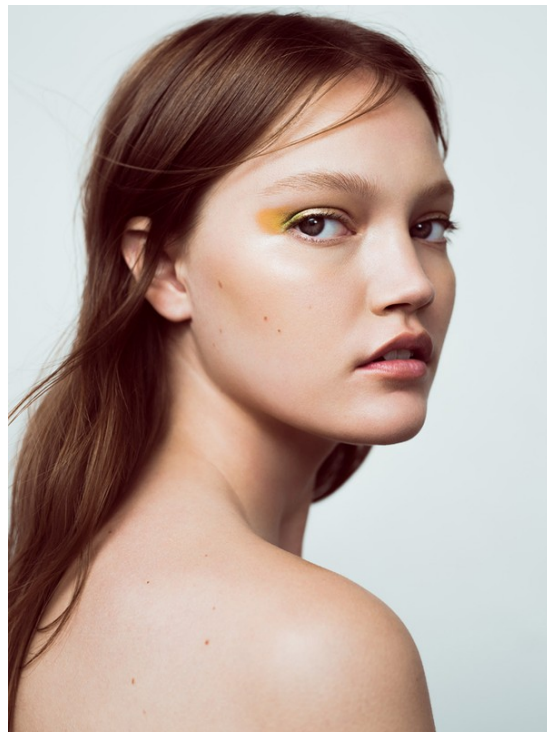
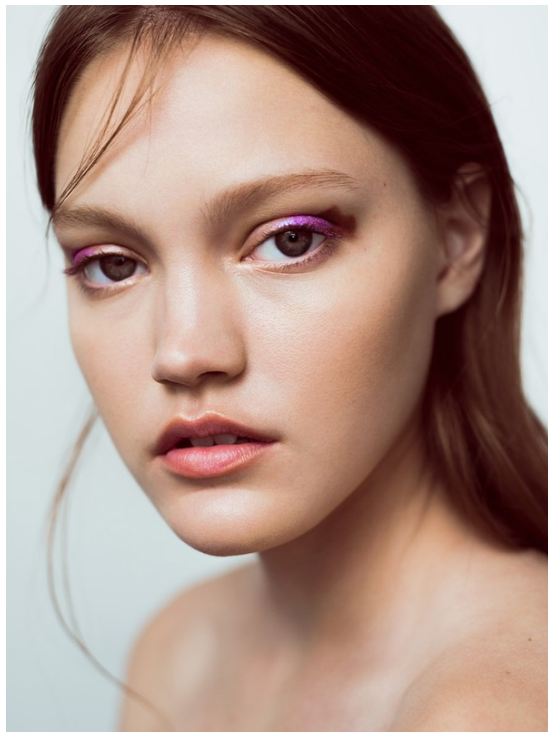
Art Department



April Greaves

www.art-dept.com

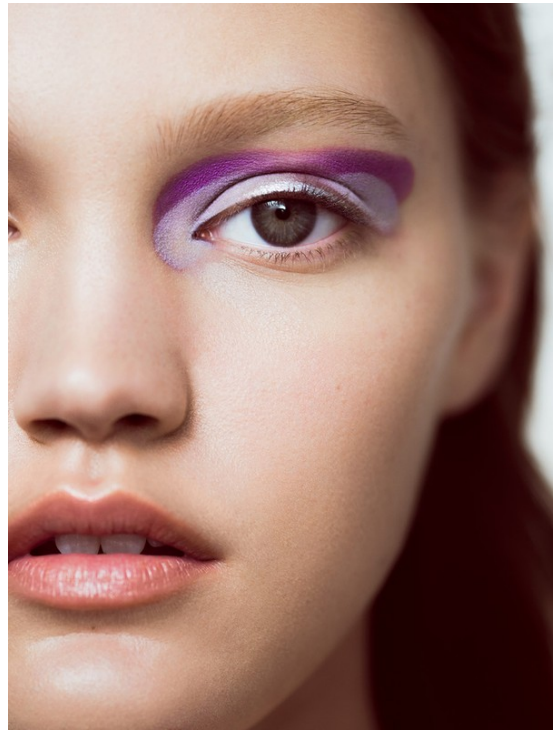
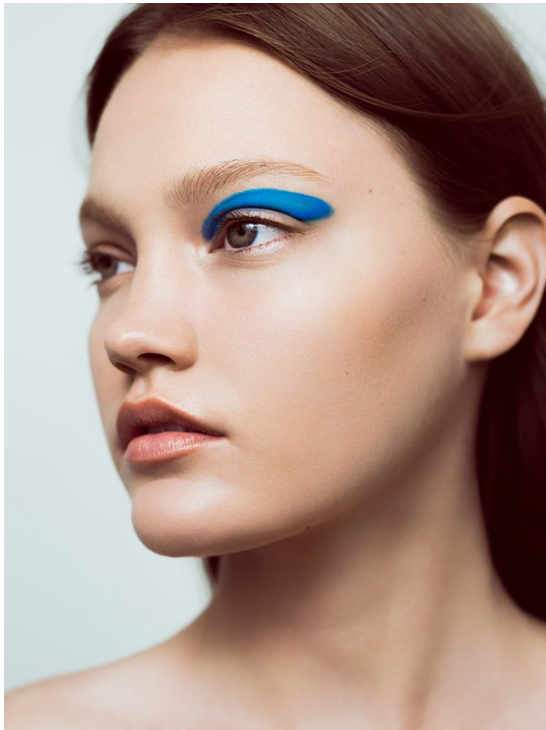
Art Department



April Greaves

www.art-dept.com

Art Department



April Greaves

www.art-dept.com

Art Department



April Greaves

www.art-dept.com

Art Department



April Greaves

www.art-dept.com

Art Department



April Greaves

www.art-dept.com

Art Department



April Greaves

www.art-dept.com

Art Department



April Greaves

www.art-dept.com

Art Department



Jacket, \$120. Adidas, adidas.com.au;
 necklace, \$285. We Are Handmade,
 wearehandmade.com; shoes, \$195,
 Oakley, oakley.com.au; sunglasses,
 \$105. Le Specs, lespcs.com.au;
 chain necklace, \$169. colored this
 bracelet on model's right arm, \$9 each,
 all Kinetic Ash, kinetich.com; watch,
 \$95.50. Kameron, kameron.com
 (evenly throughout) yellow bracelet
 on right arm, \$15. Love O'Hara's,
 loveoharasjewelry.com; bracelet
 on left arm, \$65. Celeste, celestefans,
 celestefans.com



GET IT ON

It's PARTY season, but what to wear?
 Strapless, bright, simple black and white:
 the choices are YOURS to make.

Styling by JACQUE SHAW
 Photography by PIERRE D'ISSAINT

Ariella Castella leather
 dress, \$700. Urban Sea
 Collection "Urban Sea"
 dress, \$2,995. Borewell
 ring, gold and blue gem
 stones, \$500. and
 "Forever" ring, \$120
 (across the board)

MYER Emporium, 599

April Greaves

www.art-dept.com

Art Department



April Greaves

www.art-dept.com

Art Department



April Greaves

www.art-dept.com

Art Department



April Greaves

www.art-dept.com

Art Department



April Greaves

www.art-dept.com

Art Department



April Greaves

www.art-dept.com

Art Department



April Greaves

www.art-dept.com

Art Department



April Greaves

www.art-dept.com

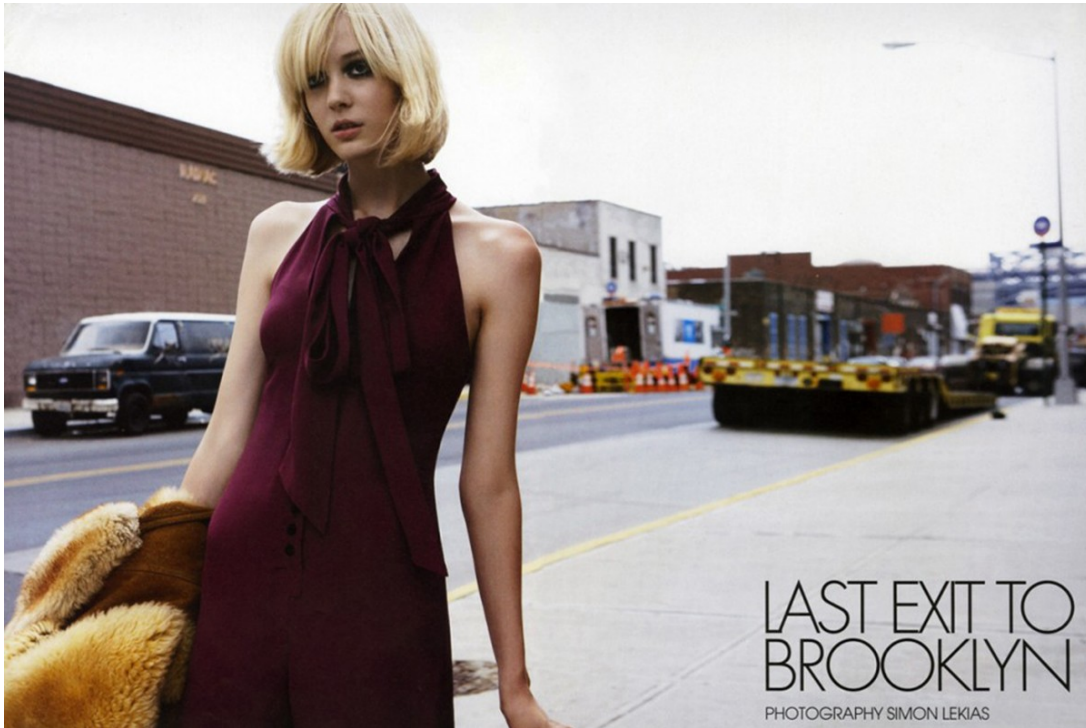
Art Department



April Greaves

www.art-dept.com

Art Department



April Greaves

www.art-dept.com

Art Department



April Greaves

www.art-dept.com