

Art Department



April Greaves

www.art-dept.com

Art Department



April Greaves

www.art-dept.com

Art Department



April Greaves

www.art-dept.com

Art Department



April Greaves

www.art-dept.com

Art Department



April Greaves

www.art-dept.com

Art Department



April Greaves

www.art-dept.com

Art Department



April Greaves

www.art-dept.com

Art Department



April Greaves

www.art-dept.com

Art Department

おしゃれを全力で楽しむ、10のキーワード

SPUR

4
April
2022
シュプール

大平修蔵
「ミステリアスな
エージェント」

COVER GIRL
ココ・ゴードン・ムーア

/新連載/
ブレイディみかこ
オカモトレイジ
佐久間宣行

一周回って、
「トレンド」はある!

ドレスで走る／ジャケットの中は享楽主義
蒔田彩珠×キラキラ／シトラス・パーティー
モダン・カウガール／プレッピーはフェティッシュに
クラフト熱は続く／ニッチなジュエリー
春のサイハイ・ブーツ／大きすぎるバッグ

<https://spur.hpplus.jp/>

April Greaves

www.art-dept.com

Art Department



Blooming

ココ・ゴードン・ムーア、
春を待ちわびて

モデルであり、アーティストとしても活動するココ・ゴードン・ムーアが初登場。ロマンティックな装飾から、センシュアルなデザインまで。心地よく美しいホーム・ドレスとともに、新たな季節の到来を迎えよう

model: Coco Gordon Moore
photography: Nick Hudson
styling: Alexis Badiyi hair: Roberto Di Cuia
using ORIBE at L'Atelier NYC
make-up: April Greaves for Art Department
coordination: Yasuyo Hibino (fish*co.)
interview & text: Akemi Nakamura

かすみ草とともに
黒のドレスアップ

ソフトラムスキンのバイカージャケットに、90年代風のトップスを。胸元のカットイングが今らしい肌見せをかなえる。贅沢なダブルサテンをボリュームたっぷりに重ねたスカートは日常をドラマティックに演出する。「このルックでドレスアップできるのがすごく楽しかった。普段のスタイルとは違って、バイブスがいい意味で変えてくれる原だと思う」。トップス・ジャケット・スカート(すべて参考商品)/シリーズ ジャパン(シリーズ)

※S1=約116円です(1月31日現在)。 36

April Greaves

www.art-dept.com

Art Department



April Greaves

www.art-dept.com

Art Department



肌に寄り添う
ブラとビスチェを主役に

「アンティークな空気感もある、エッジのきいたピンナップって気分だった。写真では見えないけれど、中にはいるグッチのアンダーウェアが一番可愛かったの。最初はそれだけで撮影したんだけど、ちょっとセクシーになりすぎてしまったから断念」。体に添うビスチェと繊細なレースからやわらかく肌が透けるブラを纏う。エンブroidアリー・GG/パターンのペンシルスカートとバラクラバを合わせて、どこかアンバランスさを楽しみたい。ブラ・ビスチェ・スカート・ソックス・靴(すべて参考商品)/グッチ・ジャパン(グッチ)バラクラバ/スタイリスト私物

April Greaves

www.art-dept.com

Art Department



ホワイトドレスで
新しい季節を迎える

「Sandy Liangのスタイルは普段から大好き。エッジがきいていて、セクシーで、キュートだから」。ココもお気に入りのブランドのコットンドレスを着て。サイドからバックにかけて生地が切り替えられ、可憐なだけではなくモダンなひねりを加えている。やわらかな風合いを感じたら、春はもうすぐそこ。ドレス\$1,950(3月発売予定) / Sandy Liang イヤリング\$270 / Jasmin Sparrow ローファー\$210 / G.H. Bass

Profile

Coco Gordon Moore

1994年、NY生まれ。モデルとしてマーク・ジェイコブスのキャンペーンほか、マリアム・ナッシャーザデーなどのランウェイで活躍。アーティストとしても活躍し、詩作やペインティングも行う。短編映画「Lucan Asks Why」、キム・ゴードンのMV「Hungry Baby」にも登場。

April Greaves

www.art-dept.com

Art Department



フェザーと揺れて、戯れて

天使や草花、虫などブレイフルなイラストが配されたドレス。どこか力の抜けた落書きのようなタッチがユーモラスな遊び心を感じさせる。ボトム部分にはシュガートーンのフェザーが大胆にあしらわれ、動くたびに軽やかに揺れる。涼く夢見心地なグラデーションのうちに確かな意思を感じさせて。「このドレスはデザイナーが一番楽しいと思った。こちらも普段は選ばない服だけれど、「こういう服を着そうな人」を想像しながら着たの」。ドレス\$3,495/Dauphinette 靴\$435/Dubie アームカフ/スタイリスト私物

April Greaves

www.art-dept.com

Art Department



April Greaves

www.art-dept.com

Art Department



April Greaves

www.art-dept.com

Art Department



April Greaves

www.art-dept.com

Art Department



April Greaves

www.art-dept.com

Art Department



April Greaves

www.art-dept.com

Art Department



April Greaves

www.art-dept.com

Art Department



April Greaves

www.art-dept.com

Art Department



April Greaves

www.art-dept.com

Art Department



April Greaves

www.art-dept.com

Art Department



April Greaves

www.art-dept.com

Art Department



April Greaves

www.art-dept.com

Art Department



April Greaves

www.art-dept.com

Art Department



April Greaves

www.art-dept.com

Art Department



April Greaves

www.art-dept.com

Art Department



April Greaves

www.art-dept.com

Art Department



April Greaves

www.art-dept.com

Art Department



April Greaves

www.art-dept.com

Art Department

SPOTLIGHT

TRIPLE THREAD

Among the most autobiographical of Edward Albee's plays, *Three Tall Women* makes its Broadway debut this spring. The production—directed by Joe Mantello and produced by Scott Rudin—is an all-star trifecta, featuring Alison Pill, Laurie Metcalf, and the inimitable Glenda Jackson, who is returning to the Great White Way after a 30-year absence, during which she served as a member of the British Parliament. “It is so uncommon to have ‘three tall women’ exist in the theater,” Metcalf observes. “It’s interesting because

built into this play is a kind of hierarchy. We all bow to Glenda Jackson—I just want to be present to absorb what she’s doing.” The Pulitzer Prize-winning play captures three women in various stages of life: youth, middle age, and old age. It is a surgically precise portrait of a woman’s relationship with herself—an excavation turned meditation on life as it nears its end: “Who we are, who we have become, and how we remember ourselves,” Pill says. Albee famously wrote fiercely strong, if sometimes terrifying, female characters, drawing inspiration from his adoptive mother, Frances, who was both his monster and, in-

evitably, his muse. The playwright, who died in 2016 at age 88, allows for the darkly comic unpacking of a matriarch’s vulnerability and the burden of a life spent being vilified for her indomitable spirit. “He and his adoptive mother didn’t get on,” says Jackson. “I think I’m putting it rather mildly. In fact, Albee’s introduction to the play terminates with him saying he rarely met anyone who could abide her, though many who have seen the play find her fascinating. He culminates by saying, ‘Heavens, what have I done?’” —A. M. HOMES

STYLING: LARRY SCHIMM; HAIR: KATHARINE MATTHEO; MAKEUP: APRIL GREAVES; METCALF, PILL, AND JACKSON STARRING JACKSON; SET DESIGN: GILL MILLS; FOR DETAILS GO TO VFCOR.COM

Laurie Metcalf, Glenda Jackson, and Alison Pill, photographed in New York City.

Metcalf wears a dress by Rochas; earrings by Tiffany & Co.; Jackson wears a top by Stella McCartney; pants by Miu Miu; shoes by Jimmy Choo; necklace from Stephen Russell. Pill wears a dress by Gucci; shoes by René Caovilla; ring by Mikimoto; necklace from Stephen Russell. Hair products by Bumble and Bumble; makeup by Chanel.

PHOTOGRAPH BY MACKENZIE STROH

VANITY FAIR | www.vanityfair.com

www.vanityfair.com | VANITY FAIR | 131

April Greaves

www.art-dept.com

Art Department



April Greaves

www.art-dept.com

Art Department



April Greaves

www.art-dept.com

Art Department



April Greaves

www.art-dept.com

Art Department



April Greaves

www.art-dept.com

Art Department



April Greaves

www.art-dept.com

Art Department



April Greaves

www.art-dept.com

Art Department



April Greaves

www.art-dept.com

Art Department



April Greaves

www.art-dept.com

Art Department



April Greaves

www.art-dept.com

Art Department



SIR JAMES DYSON
HOW THE
BILLIONAIRE
INVENTOR
BUILT HIS EMPIRE

**WINTER
OLYMPICS
2018**
AMERICA'S
BEST ATHLETES

*1st
Contest Winner*
Olivia Burns
**VOTED
MAXIM'S
COVER GIRL**

Experience
LONDON
CITY OF
STYLE

BEN O'TOOLE
GOES TO
BATTLE IN
12 STRONG

LEXUS
THE FUTURE
OF LUXURY

April Greaves

www.art-dept.com

Art Department



*Jacket, PHILIPP PLEIN.
Jeans, LEVITS. Necklace,
CHROME HEARTS.*

April Greaves

www.art-dept.com

Art Department



April Greaves

www.art-dept.com

Art Department



*Silver pants, EACH X OTHER.
Jewelry, SYDNEY EVAN. Opposite:
Sheer dress, ASHISHI. Shoes,
GIUSEPPE ZANOTTI.*

April Greaves

www.art-dept.com

Art Department

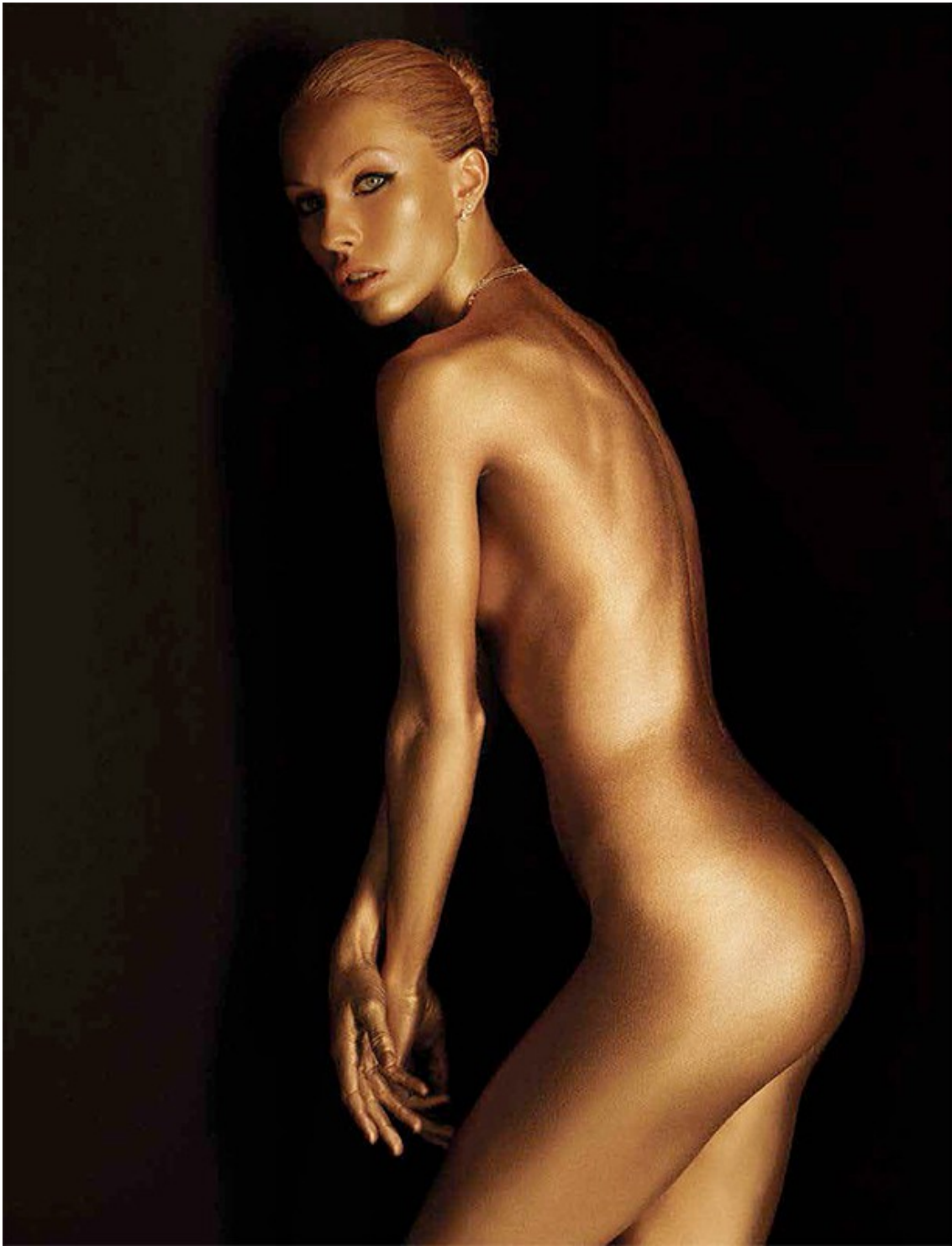


*Top, TOPSHOP. Opposite: Fringe choker
and chain choker, THE M JEWELERS. Mini
diamond hoop earrings, SYDNEY EVAN.
For more information, see page 106.
Makeup, April Greaves for Art Department.
Hair, Eric Jamieson for R+Co @ Art
Department. Nails, Yuko Wada using Dior
Vernis for Atelier Management.*

April Greaves

www.art-dept.com

Art Department



April Greaves

www.art-dept.com

Art Department



April Greaves

www.art-dept.com

Art Department



April Greaves

www.art-dept.com

Art Department



April Greaves

www.art-dept.com

Art Department



April Greaves

www.art-dept.com

Art Department



April Greaves

www.art-dept.com

Art Department



April Greaves

www.art-dept.com

Art Department



April Greaves

www.art-dept.com

Art Department



April Greaves

www.art-dept.com

Art Department



April Greaves

www.art-dept.com

Art Department



April Greaves

www.art-dept.com

Art Department



April Greaves

www.art-dept.com

Art Department



April Greaves

www.art-dept.com

Art Department



April Greaves

www.art-dept.com

Art Department



April Greaves

www.art-dept.com

Art Department



April Greaves

www.art-dept.com

Art Department



April Greaves

www.art-dept.com

Art Department



April Greaves

www.art-dept.com

Art Department



April Greaves

www.art-dept.com

Art Department



April Greaves

www.art-dept.com

Art Department



April Greaves

www.art-dept.com

Art Department



April Greaves

www.art-dept.com

Art Department

Harper's
BAZAAR
СТИЛЬ

ТАК ГУЛЯТЬ!

Февральская программа-минимум: провести как можно больше времени на свежем воздухе. Отправляясь в поход, выбирайте не только комфортную, но и красивую одежду из практичных хай-тек-материалов – как в круизных коллекциях Prada, Sacai и Dsquared2.

Фото: Emilio G. Hernandez
Стиль: Melissa Infante.
Модель: Frances Coombe @ MUSE Model Management.
На Франсис: куртка, топ, юбка, все Dsquared2.

87

April Greaves

www.art-dept.com

Art Department



ДОРОГА ПЕРЕМЕН

Во времена, когда границы между офисной униформой, коктейльными нарядами и одеждой для активного отдыха стираются, дизайнеры делают ставку на образ смелой и спонтанной женщины. Разбираем утилитарный гардероб современной героини на примере зимней коллекции Dsquared2.

Фото: ЭМИЛИО ЭРНАНДЕЗ EMILIO G. HERNANDEZ
Стили: МЕЛИССА ИНФАНТЕ MELISSA INFANTE

152

April Greaves

www.art-dept.com

Art Department



April Greaves

www.art-dept.com

Art Department



April Greaves

www.art-dept.com

Art Department



April Greaves

www.art-dept.com

Art Department



April Greaves

www.art-dept.com

Art Department



April Greaves

www.art-dept.com

Art Department



МОДЕЛИ: FRANCES
COOMBE, MIRIAM HANEY @
MUSE MODELS NEW YORK;
МАКИЯЖ: APRIL GREAVES
@ ART DEPARTMENT;
ПРИЧЕСКИ: TAICHI SAITO
С ИСПОЛЬЗОВАНИЕМ JOHN
MASTERS ORGANICS.

158

April Greaves

www.art-dept.com

Art Department



April Greaves

www.art-dept.com

Art Department



April Greaves

www.art-dept.com

Art Department



April Greaves

www.art-dept.com

Art Department



April Greaves

www.art-dept.com

Art Department



April Greaves

www.art-dept.com

Art Department



April Greaves

www.art-dept.com

Art Department



April Greaves

www.art-dept.com

Art Department



April Greaves

www.art-dept.com

Art Department



April Greaves

www.art-dept.com

Art Department



April Greaves

www.art-dept.com

Art Department



April Greaves

www.art-dept.com

Art Department



April Greaves

www.art-dept.com

Art Department



April Greaves

www.art-dept.com

Art Department



April Greaves

www.art-dept.com

Art Department



April Greaves

www.art-dept.com

Art Department



April Greaves

www.art-dept.com

Art Department



April Greaves

www.art-dept.com

Art Department



April Greaves

www.art-dept.com

Art Department



April Greaves

www.art-dept.com

Art Department



April Greaves

www.art-dept.com

Art Department



April Greaves

www.art-dept.com

Art Department



April Greaves

www.art-dept.com

Art Department



April Greaves

www.art-dept.com

Art Department



April Greaves

www.art-dept.com

Art Department



April Greaves

www.art-dept.com

Art Department



Swimsuit, \$350, Zimmermann,
zimmermannwear.com;
earrings, \$119, PetiteGrand,
petitegrand.com; star ear cuff, \$9.99
for set of six, Lovisa, lovisa.com.au

191

April Greaves

www.art-dept.com

Art Department



April Greaves

www.art-dept.com

Art Department

Bikini top: \$89.95, Tahulah,
tahulah.com.au; jacket: \$100, Nike,
nikestore.com.au; board shorts,
\$49.99, Roxy, roxyaustralia.com.au;
sunglasses, \$140, Sherill & Cherry,
anotherlove.com.au; earrings, \$119,
silver stack ring on model's right hand,
\$68 for set of three, both PetiteGrand,
petitegrand.com (worn throughout);
headphones (worn in various colours
throughout), \$99.95, Urbanears,
myer.com.au; pink watch, \$149,
blue watch, \$159, both Ice-Watch,
ice-watch.com.au; bracelet on left wrist,
\$300, Alex Monroe, (03) 5962 5535

BEAUTY NOTE
Moisturise and protect lips
with an SPF lip balm.
Ultra Moisturizing Lip Balm
Sunscreen Stick, \$3.50, Palmer's,
palmerusastralia.com

187

April Greaves

www.art-dept.com

Art Department



Jacket, \$120, **Adidas**, adidas.com.au;
swimsuit, \$285, **We Are Handsome**,
wearehandsome.com; visor, \$19.95,
Oakley, oakley.com.au; sunglasses,
\$59.95, **Le Specs**, lespecs.com.au;
charm necklace, \$169, coloured thin
bracelets on model's right arm, \$39 each,
all **Kirstin Ash**, kirstinash.com; watch,
\$99.95, **Komono**, surfstitch.com
(worn throughout); yellow bracelet
on right arm, \$49, **Love Obsessed**,
loveobsessedjewelry.com; bracelet
on left arm, \$80, **Celeste Tesoriero**,
celestetesoriero.com

April Greaves

www.art-dept.com

Art Department



April Greaves

www.art-dept.com

Art Department



By Johnny "Oil Art" mini
bustier, \$180, and wide
A-Line skirt, \$260 (limited
stock available)

MYER emporium 1005

April Greaves

www.art-dept.com

Art Department



April Greaves

www.art-dept.com

Art Department



April Greaves

www.art-dept.com

Art Department



April Greaves

www.art-dept.com

Art Department



April Greaves

www.art-dept.com

Art Department



April Greaves

www.art-dept.com

Art Department



April Greaves

www.art-dept.com

Art Department



April Greaves

www.art-dept.com

Art Department



April Greaves

www.art-dept.com

Art Department



April Greaves

www.art-dept.com

Art Department



Top, \$610, trousers, \$515,
cap, \$240, all Max Mara,
maxmara.com; sandals,
\$165, Eska Alikai,
eskaalikai.com.au

April Greaves

www.art-dept.com

Art Department



April Greaves

www.art-dept.com

Art Department



April Greaves

www.art-dept.com

Art Department



April Greaves

www.art-dept.com

Art Department



April Greaves

www.art-dept.com

Art Department



April Greaves

www.art-dept.com

Art Department



April Greaves

www.art-dept.com

Art Department



Dress, \$800, Scanlan Theodore,
scanlantheodore.com.au;
short rose-gold necklace, \$400,
Vanrycke, (03) 5962 5535; gold
necklace, \$285, Alex Monroe,
(03) 5962 5535 (worn throughout)

April Greaves

www.art-dept.com

Art Department



Lace dress, \$1,800,
Zimmermann,
zimmermannwear.com;
earrings, \$7.99, **Lovisa**,
lovisa.com.au

April Greaves

www.art-dept.com

Art Department



Top, \$2149; trousers,
\$1,519, both Michael Kors,
michaelkors.com; bracelet,
\$300, Alex Monroe,
(65) 5962 5533

BEAUTY NOTE

Get Bambi's groomed brows by using
Essential Brow Set, \$29; NP Set,
npetcosmetics.com

April Greaves

www.art-dept.com

Art Department



April Greaves

www.art-dept.com

Art Department



(this page) **ZIPPY WEARS** Prada dress, and scarf, \$339; (2) 9223 1688; Max Mara boots, \$640, (67) 8084 9113

(opposite page, from left) **ERIN WEARS** Bro & Bridge jumpsuit, \$790; (2) 9310 4230; Sol Sana shoes, \$149.95; (3) 8339 8777 **BAMBI WEARS** Gucci top, \$980, and skirt, \$1320, 1300 442 678; Hatsmaker hat, \$790, hatsmaker.com.au; H&M boots, \$199, h&m.com.au

April Greaves

www.art-dept.com

Art Department



April Greaves

www.art-dept.com

Art Department



April Greaves

www.art-dept.com

Art Department



April Greaves

www.art-dept.com

Art Department



April Greaves

www.art-dept.com

Art Department



April Greaves

www.art-dept.com

Art Department



April Greaves

www.art-dept.com

Art Department



April Greaves

www.art-dept.com

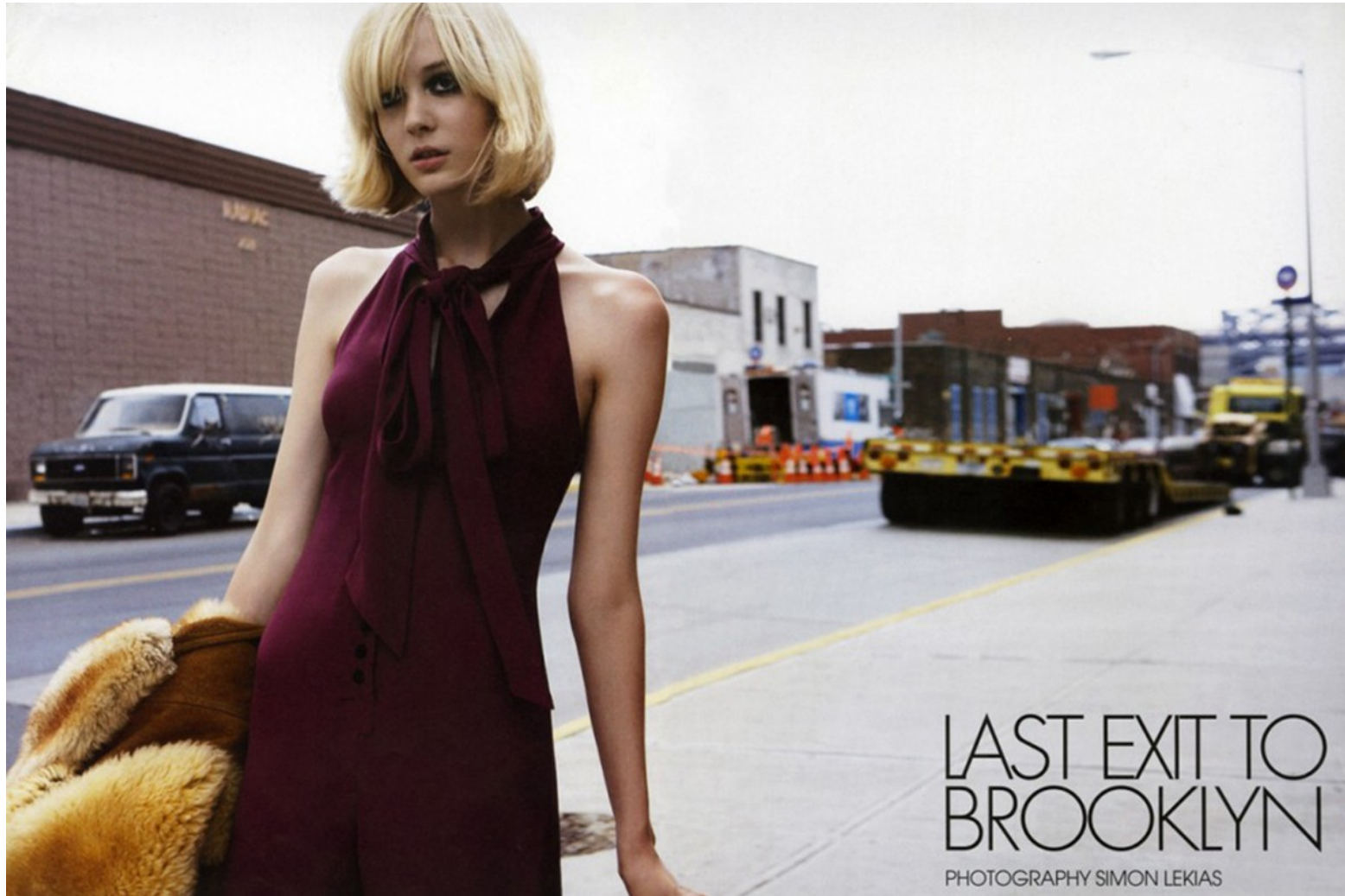
Art Department



April Greaves

www.art-dept.com

Art Department



April Greaves

www.art-dept.com

Art Department



April Greaves

www.art-dept.com

Art Department



April Greaves

www.art-dept.com

Art Department



April Greaves

www.art-dept.com