

# Art Department



April Greaves

[www.art-dept.com](http://www.art-dept.com)

# Art Department



April Greaves

[www.art-dept.com](http://www.art-dept.com)



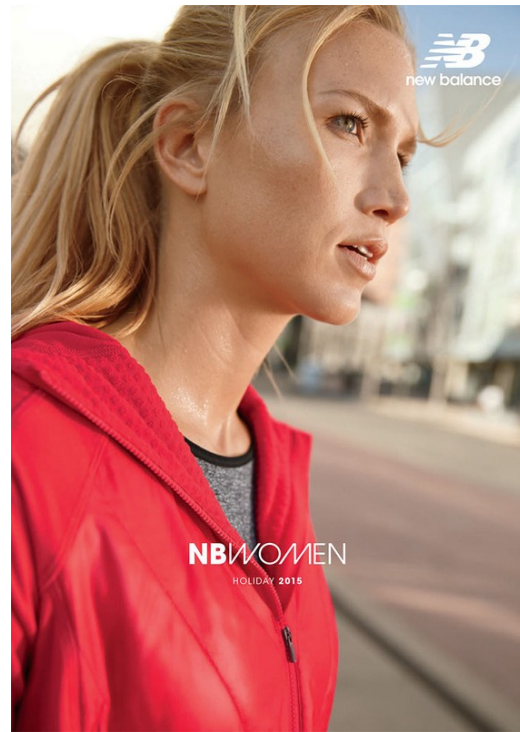
# Art Department



April Greaves

[www.art-dept.com](http://www.art-dept.com)

# Art Department

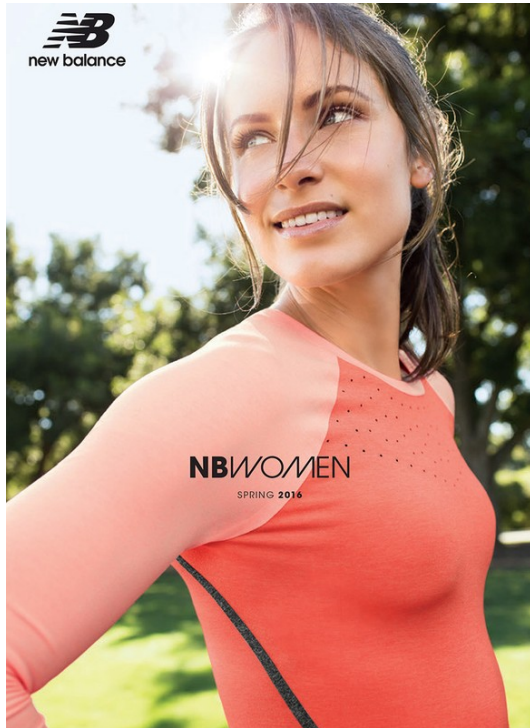


April Greaves

[www.art-dept.com](http://www.art-dept.com)



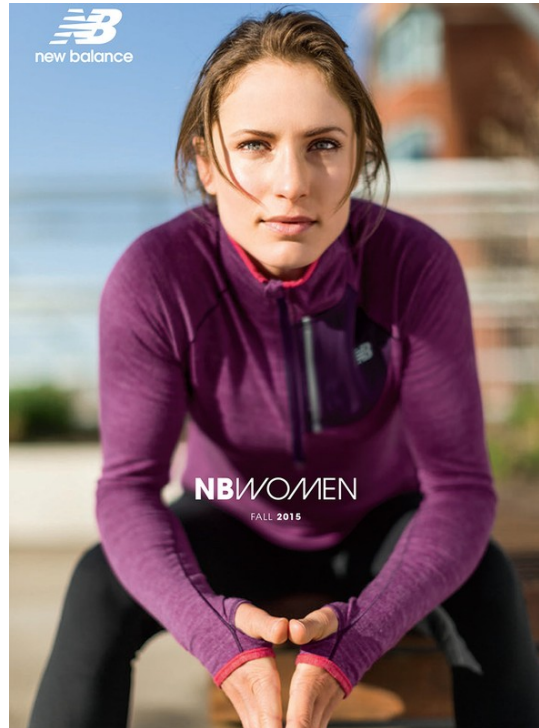
# Art Department



## April Greaves

[www.art-dept.com](http://www.art-dept.com)

# Art Department



April Greaves

[www.art-dept.com](http://www.art-dept.com)



# Art Department



April Greaves

[www.art-dept.com](http://www.art-dept.com)

# Art Department



ATHLETA

April Greaves

[www.art-dept.com](http://www.art-dept.com)



# Art Department



April Greaves

[www.art-dept.com](http://www.art-dept.com)

# Art Department



April Greaves

[www.art-dept.com](http://www.art-dept.com)



# Art Department



Beauty Buzz



**The (Zip) Code to Beautiful Skin**

Location, location, location! Dermatologists now believe where you live should be a key factor in determining your skin-care routine. This road map will help you navigate your way to a dream complexion.

*By Kayleigh Donahue*

Hit a drugstore in Portland, Minneapolis, or Austin, and chances are the skin-care aisles will all look the same. But there's a new argument for why they should be more tailored: After figuring out your skin type, "your climate should be the next determining factor in the products you use," says dermatologist Jeannette Graf, M.D., an assistant clinical professor of dermatology at Mount Sinai Medical Center. Sure, you could deal with acne or wrinkles anywhere in the country, but certain climates are more likely to cause specific skin problems. We polled derms from coast to coast for the top issues in each region. On the following pages, you'll find a customized plan to ensure amazing skin.

Beauty Buzz



**ONE SPF FITS ALL**

Almost every derm in this story raved about E!taMD UV Clear Broad-Spectrum SPF 46 (\$30, [eltamd.com](http://eltamd.com)). "You actually don't want to go any higher than 50—titanium chemicals in a really high SPF can convert sunlight into heat, which could instigate a heat rash," says Kim. "Just make sure

## April Greaves

[www.art-dept.com](http://www.art-dept.com)



# Art Department



April Greaves



# Art Department



April Greaves

# Art Department



April Greaves