

# Art Department



MAX MARA  
velvet dress.

Reign  
over Me

Starring  
Painsford

Photography by Tatijana Shoon  
Styled by Mane Duplan  
Stylist Assistant Kristopher Fraser  
Hair by Blake Burkholder  
Makeup by Charlotte Day  
with Art Department  
using Chanel Beauty

## Charlotte Day

[www.art-dept.com](http://www.art-dept.com)

# Art Department



**CHANEL**

< BOTH PAGES >

cashmere pullover,  
lambskin pants, metal  
bracelet, metal and  
resin necklace with  
strass, goatskin and  
metal belt with strass,  
and calfskin boots.

Charlotte Day

[www.art-dept.com](http://www.art-dept.com)



# Art Department



**DOLCE&GABBANA**  
white cotton shirt,  
pinstripe wool tie, pinstripe  
wool pants, pinstripe  
leather oxfords.

**AUDEMARS PIGUET**  
Code #1.59 self-winding  
chronograph, 18k white  
gold case, and smoked  
lacquered burgundy dial.

## Charlotte Day

[www.art-dept.com](http://www.art-dept.com)



# Art Department



LOUIS VUITTON  
taffeta dress with  
calfskin, sheepskin  
and lambskin belt  
with strass, polyester  
elastane cotton tights,  
and calfskin boots.

## Charlotte Day

[www.art-dept.com](http://www.art-dept.com)

# Art Department



Charlotte Day

[www.art-dept.com](http://www.art-dept.com)



# Art Department



Charlotte Day

[www.art-dept.com](http://www.art-dept.com)



# Art Department



Charlotte Day

[www.art-dept.com](http://www.art-dept.com)

# Art Department



Charlotte Day

[www.art-dept.com](http://www.art-dept.com)



# Art Department



Charlotte Day

[www.art-dept.com](http://www.art-dept.com)

# Art Department



Charlotte Day

[www.art-dept.com](http://www.art-dept.com)



# Art Department



Charlotte Day

[www.art-dept.com](http://www.art-dept.com)

# Art Department



## LASHINGS OF *Lashes*

"I don't bother with false lashes during the day. I don't really like anything fake. I feel like I'm lying and it just seems unnatural," says Alexa. While a full row of falsies is a no-no, "for events I will sometimes add a few little individual lashes just to intensify my eyes." For a natural look that still makes a great impact, we added two half lashes to the middle of her upper lashline (**Lash Wardrobe** £18 [eyeko.com](http://eyeko.com)). Contrast them with a flushy blush (**Blush in Ashes Of Roses** £7.49 [Bourjois](http://Bourjois.com)) and pretty baby-pink lips (**Velvet Matte Lip Pencil in Bolero** £17.50 [narscosmetics.co.uk](http://narscosmetics.co.uk)). 

Styled by Alessandra Steinherr  
Hair: Harry Josh at Jed Root  
Make-up: Charlotte Day at See Management  
Manicure: Elle at Art Department  
Still lifes: Jody Todd

Blouse Chloé

191

## Charlotte Day

[www.art-dept.com](http://www.art-dept.com)



# Art Department



## THE DAYTIME Smoky

"A bronzy smoked eye is so flattering on everybody," says Alexa. "I like to use cream sticks for this, I can't be bothered with powder eyeshadows that you have to blend, blend, blend. It takes skill and patience, I would rather just draw it on and smudge." Alexa is wearing **Me And My Shadow in 2** £15 [eyeko.com](http://eyeko.com), blended all around her eyes, and **Me And My Shadow in 4** £15 [eyeko.com](http://eyeko.com) dabbed close to lashes. It's teamed with a creamy nude pout, **Lip Stylo in Nude 2** £22 Hourglass. ▶

186

Coat [topshop.com](http://topshop.com)

## Charlotte Day

[www.art-dept.com](http://www.art-dept.com)

# Art Department



Charlotte Day

[www.art-dept.com](http://www.art-dept.com)



# Art Department



Charlotte Day

[www.art-dept.com](http://www.art-dept.com)

# Art Department



Charlotte Day

[www.art-dept.com](http://www.art-dept.com)



# Art Department



Alexa Chung, shot exclusively for FN, at PMC headquarters in NYC, last month.

## Charlotte Day

[www.art-dept.com](http://www.art-dept.com)

# Art Department

FOOTWEARNEWS.COM / SEPTEMBER 4, 2017 / @FOOTWEARNEWS

THE NYFW ISSUE

**Perfect Pairing**  
Why the Minkoffs are getting a footwear refresh with Camuto Group

**Right Off The Bat**  
Former Red Sox slugger "Big Papi" hits on the little things in life

**Taking It Zizi**  
How one L.A. brand pairs old Hollywood glamour with '80s excess



## Asking Alexa

Whip-smart, effortlessly cool and quirky, **Alexa Chung** is infusing that signature style with a new collection that is all her own.

## Charlotte Day

[www.art-dept.com](http://www.art-dept.com)



# Art Department



## QUEEN OF COOL

With her captivating style and far-reaching fan base, Alexa Chung spent years as fashion's go-to collaborator. Now her solo design career is ready for takeoff.

By MOSHA LUNDSTROM HALBERT  
Photographed by LESLIE KIRCHHOFF

17

## Charlotte Day

[www.art-dept.com](http://www.art-dept.com)

# Art Department



## DOMINANT

PHOTOGRAPHY BY BETINA LA PLANTE STYLING BY MARY FELLOWES  
WORDS BY KEVIN EG PERRY

*Mad Men, Sons of Anarchy and Billions* – actress *Maggie Siff* usually lives in very masculine worlds both on and off screen, but that doesn't mean she's just going to accept the status quo

## Charlotte Day

[www.art-dept.com](http://www.art-dept.com)



# Art Department



Charlotte Day

[www.art-dept.com](http://www.art-dept.com)

# Art Department



COAT BY WHIT  
HAIR: MATTHEW MONZON AT JED ROOT USING IGK  
MAKE-UP: CHARLOTTE DRY USING DERMALOGICA  
NAIL TECHNICIAN: NORR AT ARTLIST USING DIOR  
STYLIST'S ASSISTANT: JAMES GALLAGHER  
PRODUCTION: THE LOVELY WORKS  
LOCATION: TRIBECA JOURNAL STUDIO, NYC

## Charlotte Day

[www.art-dept.com](http://www.art-dept.com)



# Art Department



**FEELING**  
*blue*

"I'm not so keen on too much colour, I don't think I've ever worn blue eye make-up," says Alexa.  
"But I quite like the contrast of a classic liner shape in navy – it's a bit Princess Diana." Here we matched the liner and mascara with **Skinny Liquid Eyeliner in Blue** £10 [eyeko.com](http://eyeko.com) and **Black Magic Mascara in Midnight Blue** £18 [eyeko.com](http://eyeko.com)

Sweater [americanapparel.co.uk](http://americanapparel.co.uk);  
cap [befmstockspeirs.com](http://befmstockspeirs.com)

Charlotte Day

[www.art-dept.com](http://www.art-dept.com)

# Art Department

VOGUE girl

MARCH 2014  
www.voguegrl.co.kr

**PINK WINGS**  
핑크 윙즈 캠페인의 전영사가 된 박형식, 바로, 임시완, 박보영, 김지원, 한선화와 전효성

**VOGUE GIRL'S ARCHIVE**  
(보그 걸) 144원으로  
쏟아 올린  
12년의 기록들

**開花**  
이제 막 피어나는,  
꽃 같은  
12명의 소녀들

**ONLY 2 WEEKS!**  
망가진 몸매를  
단 14일 만에  
재정비하는 비법

12th ANNIVERSARY

ISSN 1599-4945  
9 771599 494900

Charlotte Day

www.art-dept.com



# Art Department



Charlotte Day

[www.art-dept.com](http://www.art-dept.com)

# Art Department



Charlotte Day

[www.art-dept.com](http://www.art-dept.com)



# Art Department



Charlotte Day

[www.art-dept.com](http://www.art-dept.com)

# Art Department



Charlotte Day

[www.art-dept.com](http://www.art-dept.com)



# Art Department



Charlotte Day

[www.art-dept.com](http://www.art-dept.com)

# Art Department



Charlotte Day

[www.art-dept.com](http://www.art-dept.com)



# Art Department



## Charlotte Day

[www.art-dept.com](http://www.art-dept.com)

# Art Department



Charlotte Day

[www.art-dept.com](http://www.art-dept.com)



# Art Department



Charlotte Day

[www.art-dept.com](http://www.art-dept.com)

# Art Department

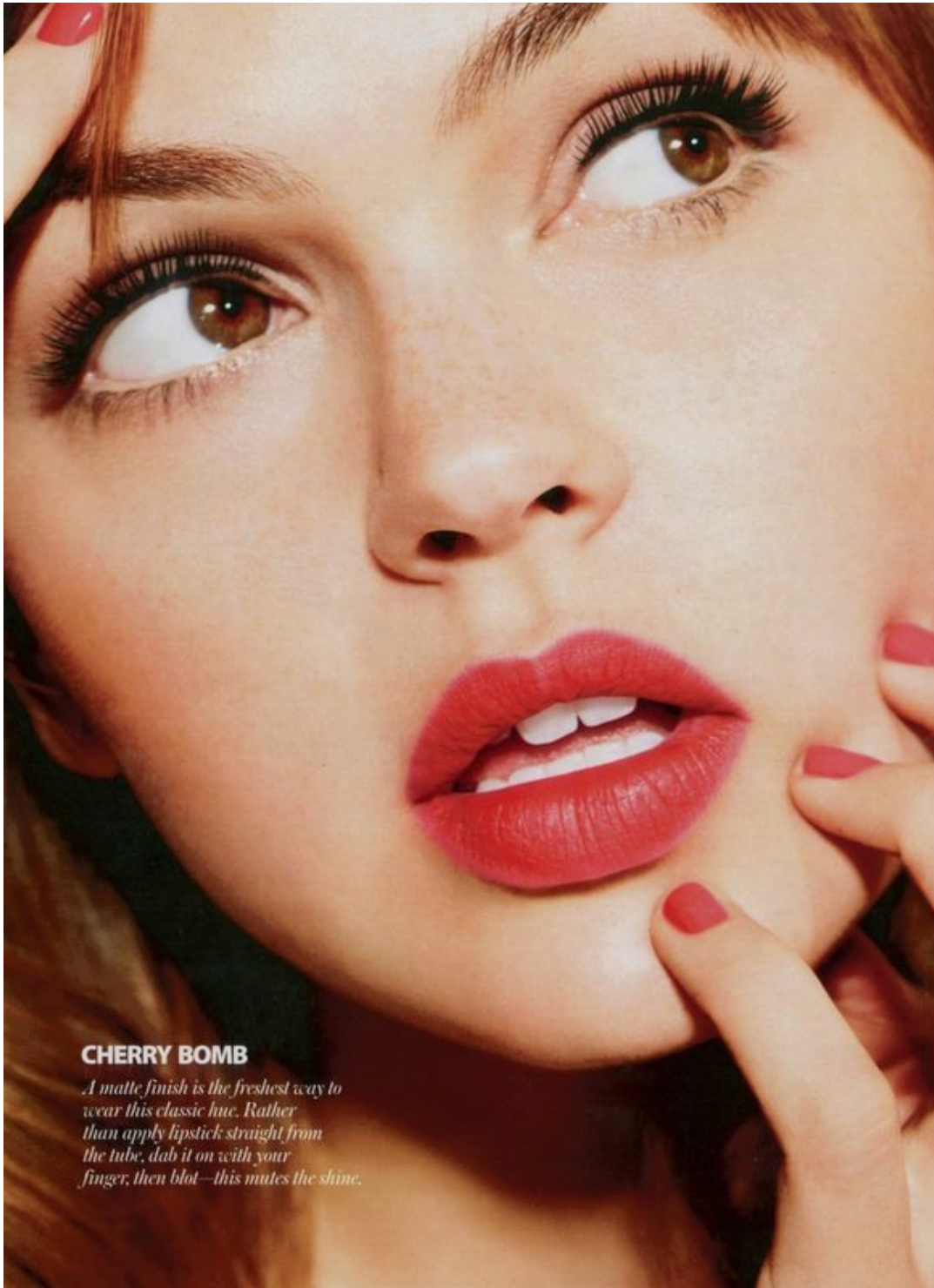


Charlotte Day

[www.art-dept.com](http://www.art-dept.com)



# Art Department



## **CHERRY BOMB**

*A matte finish is the freshest way to wear this classic hue. Rather than apply lipstick straight from the tube, dab it on with your finger, then blot—this mutes the shine.*

## Charlotte Day

[www.art-dept.com](http://www.art-dept.com)

# Art Department



## **SO-NAUGHTY NUDE**

*For a truly naked look, prep lips with concealer to get rid of your natural pink tones, then swipe on a creamy lipstick. For the lip-enlarging metallic effect here, use a small shadow brush to dust a shimmery gold powder on the center of lips only.*

H&M American Apparel

## Charlotte Day

[www.art-dept.com](http://www.art-dept.com)



# Art Department



Charlotte Day

[www.art-dept.com](http://www.art-dept.com)

# Art Department



Previous page: Dress by Dolce & Gabbana; cat hat  
by Marie Mercier. This page: T-shirt and skirt by DAG

## Charlotte Day

[www.art-dept.com](http://www.art-dept.com)



# Art Department



BRITAIN'S No 1 WOMEN'S MAGAZINE

# GLAMOUR

ONLY £2

www.glamour.com AUGUST 2011

**BRING ON THE BEACH**

## 659 SUMMER STEALS

**Jessie J**  
"What no one knows about my love life"

**30,000 women's SEX SECRETS**  
Hot, honest, 100% stealable!

**Cut 350 calories a day – without going hungry**

**EXCLUSIVE**  
The wedding pics you didn't see  
By **Lily Allen**

**The GLAMOUR Women of the Year Awards**  
What really happened

"Married at 22. Pregnant and a widow by 24"

Charlotte Day

# Art Department



## Charlotte Day

[www.art-dept.com](http://www.art-dept.com)



# Art Department



## Devon Aoki

"When it's a million degrees, you've gotta be comfy. An airy little dress always works."

In addition to starring in the upcoming film *The Mutant Chronicles*, Aoki also moonlights as a designer for Levi's. Dress, Chloé. See Go Shopping for more information.

Editor: Maggie Mann; hair: Felix Fischer for Eiji Salon New York; makeup: Charlotte Day at seemanagement.com; manicure: Beth Fricke at artistsbytimothyprano.com; set design: Thomas Thurnauer for supercube.net; production: thefocusstudio.com.

167

## Charlotte Day

[www.art-dept.com](http://www.art-dept.com)

# Art Department



**Petra Nemcova**  
"My style is hippie chic, but I do have a job. This peasant dress goes easily from work to play!"

Nemcova, a model and survivor of the 2004 Asian tsunami, founded the Happy Hearts Fund to support disaster victims. Her show, *A Model Life With Petra Nemcova*, is now on TLC. Tunic dress, Samantha Treacy. Jewelry, her own. See Go Shopping for more information.

## Charlotte Day

[www.art-dept.com](http://www.art-dept.com)



# Art Department



## Cassie

"I'm a total tomboy; I love jeans and tees. How I mix them up now? With high-tops—I wear them every day!"

R&B singer Cassie's sophomore album hits stores in October. T-shirt, C&C California; jeans, Cheap Monday; hat, Adidas; sneakers, Converse; jewelry, her own. See Go Shopping for more information.

## what stars wear all summer

They're hot new names who can get their hands on any ball gown or bling they want—but when it's sweltering, here's what they choose to wear instead. Looks good, doesn't it?

Photographs by  
Pamela Hanson

164

## Charlotte Day

[www.art-dept.com](http://www.art-dept.com)

# Art Department



Charlotte Day

[www.art-dept.com](http://www.art-dept.com)