

Art Department



Chris Colbeck

www.art-dept.com

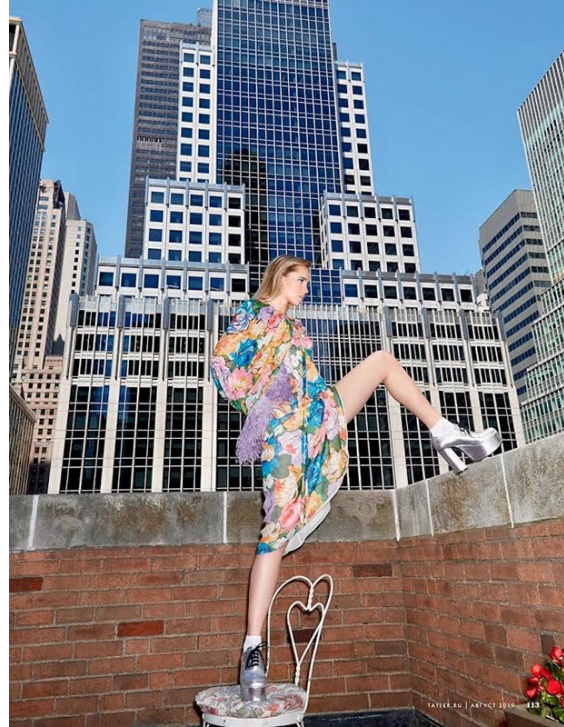
Art Department



Chris Colbeck

www.art-dept.com

Art Department



Chris Colbeck

www.art-dept.com

Art Department



Chris Colbeck

www.art-dept.com

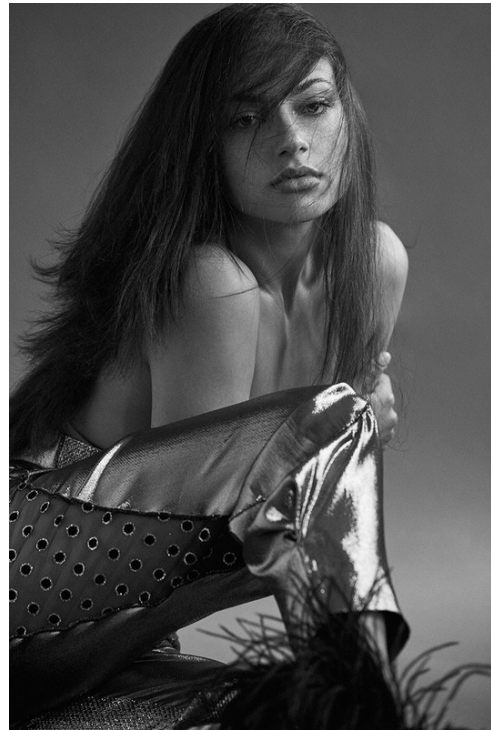
Art Department



Chris Colbeck

www.art-dept.com

Art Department



Chris Colbeck

www.art-dept.com

Art Department



Chris Colbeck

www.art-dept.com

Art Department



Chris Colbeck

www.art-dept.com

Art Department



Camicia di modal, Pizazz
Santolina, maglione
tutto multicolore, Chanel
190 euro, camicia con
turbante, Falpa
Foto: Ralph Lorenz
125 euro di stile, nuovo
per capelli, Armani
Western, colore vintage



Giacca a vento con
stampo grafico, K.Way
160,00 euro, maglione
fantasia, H&M
19,99 euro, jeans
Nimbu (140 euro), camicia
di cotone, Giannini
(35 euro), sandali
intrecciati Alberto Ferreri
(275 euro)
Nella pagina accanto
Abito con stampo grafico
(149 euro) e falpa
di cotone con cappuccio
(49,99 euro), tutto H&M

Chris Colbeck

www.art-dept.com

Art Department



Chris Colbeck

www.art-dept.com

Art Department

working girl

Hommage au tailoring fort, celui qui fait les épaules larges et les femmes puissantes. Emprunt aux codes masculins, qu'il est toujours temps de rendre féminins.
 Photographie: Miki Kasch
 Styliste: Virginie D'heco



Veste en laine et chanvre en
 coupe décontractée, avec poches, boutons
 PRADA. Chemise SAGIO & VOLTARE.
 Manches d'inspiration "Vintage" en soie,
 avec boutons, VERNER.

164 / AIR FRANCE MADAME



Portance en soie et
 body en jacquard, avec
 glands pour JORDAN
 BROWN. PRADA. Veste
 de cérémonie en laine, avec
 une patte BRUNELLO
 CUCINELLI. Soutien-
 gorge en maille noire,
 plissé et en soie, C&A
 pour BURMA. Escarpin
 en soie avec talon,
 JIMMY CHOO.
 Drapeau graphique, imprimé
 en soie, T-shirt en jersey
 de coton, pull en laine
 d'origine, pantalon en
 soie, chemise en soie, veston,
 manteau et LOUIS
 VUITTON. Manches
 d'inspiration "Vintage"
 en soie, avec boutons,
 VERNER.

AIR FRANCE MADAME / 165

Chris Colbeck

www.art-dept.com

Art Department

THE CULTURE OF STYLE

ON ELLA RICHARDS: HANNI
COAT (D&G), DRESS
GELATI, AND SHOES
BY JIL SANDER
GARDNER: PRINCE OF
WALLES; BOB FINE
JEWELRY: MISS PRINCE OF
WALLES; MAYBELLINE COSMETICS
FOR DETAILS SEE PAGE 171

Hair by Didier Maligou. Makeup by Chris Colbeck using
Chanel Petite Etoile/Bele at Art Department. Nails by
Kelly B. using Dior Vernis. Set design by Jeffrey Miller at the
Magent Agency. Choreography by Alexandra Berger.
Produced by Kinsey Productions. Tailoring by
Yasmine Ozeili for Lars Nord. Location courtesy
Maison Margiela USA. Casting by Steve Brown.



Chris Colbeck

www.art-dept.com

Art Department



Chris Colbeck

www.art-dept.com

Art Department



Chris Colbeck

www.art-dept.com

Art Department

THE GROUP A JUSTICE LEAGUE OF DESIGNERS SEES THE FUTURE IN DOWN.

By Erik Maas
Photograph by Victor Demarchelier
Styled by Nicoletta Santoro

The charm was in the details. Earlier this year, Mosler staged a grand production in Milan, the sort of theater a jaded fashion crowd expects from chairman and CEO Remo Ruffini. Inside the Palazzo delle Scintille were seven towering silver tents circled by onlookers restless to see the treasures underneath, wondering if the big reveal would live up to the hype. And then flaps parted and small domains came into view, immaculately appointed cells, each brimming with creations by some of the world's most acclaimed designers, including Valentino's Pierpaolo Piccolini, the romantic Simone Rocha, Ken Nisomura (backed by Comme des Garçons) and Japanese streetwear powerhouse Hiroshi Fujiwara. They were, to use Piccolini's phrase, "a hub of inventors," a Fashion Justice League convened to reinterpret the classic Moncler down jacket. "Consumers are changing radically," Ruffini said, and the Genius project meets them halfway, giving them curated drops that hit boutiques and pop-ups strategically, rather than once a season: Rocha will be out in September, followed by Piccolini in October, when a pop-up in New York will carry all the Genius collections. For the designers, Ruffini's call was a challenge. Nisomura's all-black ensembles underlined his inventive use of fabric, while Piccolini's colorful nylon capes suggested ecclesiastical astronauts. Rocha didn't shy from making a practical staple her own, embellishing her down jackets with sequin flowers and frills in feminine pinks and reds. She told *FORC*: "She imagined the looks on 'female Victorian mountain climbers who would bring cake and champagne with them up the mountain.' But they'll work just fine in Gstaad."



ALL CLOTHING: MONCLER; HAIR: KIMMO; MAKEUP: GINA VINCIGUERRA; STYLING: NICOLETTA SANTORO; SET DESIGN: JIMMY KIMBLE; HAIR BY: ROMANA MANNI; MAKEUP: MARIU; HAIRBY: CHRIS COLBECK; JEWELRY: DIAMOND STAR; MANICURE: GINA VINCIGUERRA; CHANEL LE VERTIC.

06

07

TOWARDSCENTRAL.COM

06

07

TOWARDSCENTRAL.COM



Manteau en denim, *Denim coat*, BALENCIAGA. Baskets "Sk8-Hi" en toile, *canvas sneakers*, VANS. Collier "Manette" en or jaune, *gold necklace*, SPALLANZANI. MILANO 1980. Brosche d'ossettes "Bambino" en métal doré ornée, *gold metal brooch*, K&F. CHEZ CRO pour BURMA. Page de droite, *opposite page*: veste en laine et soie, *parablen en denim et cuir*, "Saddle", en nylon et laina, *wool and silk jacket*, denim trousers, *nylon and faux fur*, DIOR. Bandana en soie, *silk bandana*, HERMÈS. Baskets en toile, *canvas sneakers*, CONVERSE. Collier et boucle d'oreille en or jaune, bagues en or jaune et diamants, collection "Manette", *gold necklace and earrings, gold and diamond ring*, SPALLANZANI. MILANO 1980. Brosche vintage '80, en or jaune, *vintage gold brooch*, COLLECTOR SQUARE. Manicure "Manette", en or jaune, *gold nail polish*, DINH VAN.



Chris Colbeck

www.art-dept.com

Art Department



AIR FRANCE MARBANE / 139



Chris Colbeck

www.art-dept.com

Art Department



Chris Colbeck

www.art-dept.com

Art Department



Chris Colbeck

www.art-dept.com

Art Department



Chris Colbeck

www.art-dept.com

Art Department



Chris Colbeck

www.art-dept.com

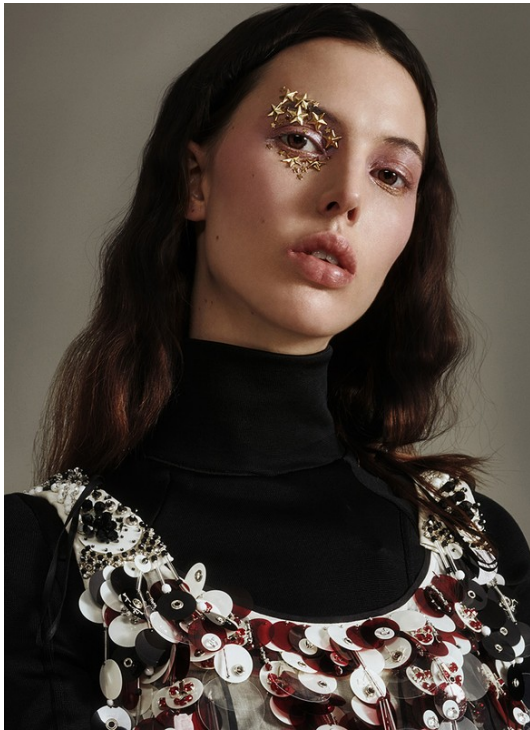
Art Department



Chris Colbeck

www.art-dept.com

Art Department



Chris Colbeck

www.art-dept.com

Art Department



Chris Colbeck

www.art-dept.com

Art Department



Chris Colbeck

www.art-dept.com

Art Department



Chris Colbeck

www.art-dept.com

Art Department



Chris Colbeck

www.art-dept.com

Art Department



Chris Colbeck

www.art-dept.com

Art Department



*Hair by Didier Malige
 Makeup by Chris Colbeck
 Hair: Chanel Le Bonnet
 Fluid: Marc Jacobs by Proenza
 Simmons using Chanel
 Le Vernis. Set design by
 North Westhoff Studio.*

PAINTED LADY
 Patterns and prints are now
 seasonless. Marni dress
 (\$2,300) and fur stole
 (\$3,590); LaCraie gloves
 (\$300); Mokuba belt (price
 on request); Marni earrings
 (top, \$525; bottom, \$400).
 For details see page 156.

GET THE LOOK
 To get into an Edward
 Hopper-inspired frame of
 mind, makeup artist Chris
 Colbeck drew from the
 painter's work and the recent
 fashion collections. "New
 realism is the zeitgeist for fall/
 winter," he says. Here, that
 translates into a muted
 copper palette using Chanel
 Les 4 Ombres eye shadow in
 Spices and Joues Contraste
 blush in Fardango.

JUNE/JULY 2014 | 85

BETWEEN THE LINES

MUTED PALETTES, FUR TRIM, LOOSELY CINCHED WAISTS: AN ARTFUL INTERPRETATION OF THE PRE-FALL COLLECTIONS REVEALS THE SHAPE OF THINGS TO COME.

PHOTOGRAPHS BY PAUL WETHERELL



SHARDED AREAS
 Pink, a color once reserved
 for dolls and little girls,
 has matured (pinkish-
 black).
 Neck Bow (dress, \$4,700);
 Colored Canvas for
 cuff (\$250); Semtex
 gloves (\$500); Mokuba
 belt (price on request);
 Fred Topline earrings
 (price on request).
 Styled by Nicoletta Santoro

JUNE/JULY 2014 | 127

Chris Colbeck

www.art-dept.com

Art Department



Chris Colbeck

www.art-dept.com

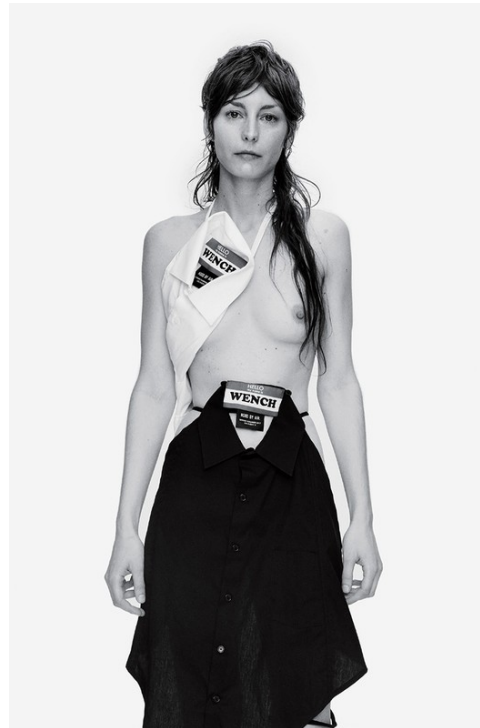
Art Department



Chris Colbeck

www.art-dept.com

Art Department



Chris Colbeck

www.art-dept.com

Art Department



Polyester-rins jacket, silk dress and leather boots all Louis Vuitton. Cotton socks. Make-up: For shopping details, see Address Book. Hair: Roberto Di Carlo at L'Oréal. NYC using Oribe Hair Care. Make-up for Chris Colbeck for Art Department using Nars. Makeup: Rosanna Spigolon for Art Department. Set Production: Victoria Craven for Urban NYC/LA.

Kai Z Feng



'I THINK I'M BETTER NOW THAT I'M MY OWN MASTER'

The open black and white dress and black jacket, Coach black and tan bag, Alexander McQueen Gold earrings worn throughout. Louis Vuitton Opposite. Black silk dress, Burberry black leather boots and metal ring, both Louis Vuitton. Silver hoop nose studs, Maria La Rosa.

154

Kai Z Feng

Chris Colbeck

www.art-dept.com

Art Department



Chris Colbeck

www.art-dept.com

Art Department



Chris Colbeck

www.art-dept.com

Art Department



Chris Colbeck

www.art-dept.com

Art Department



Chris Colbeck

www.art-dept.com

Art Department



Chris Colbeck

www.art-dept.com

Art Department



Chris Colbeck

www.art-dept.com

Art Department



Ann Wilkens

261



The paper Silk-mix jacket, price on request, and sequined cotton-wool blouse on request, both Maison Martin Margiela. **Opposite** Printed organza washcoat, £245, Chanel. Black leather dress, £650, Zouj & Vittoria



let loose

THIS PAGE: JACKET, £4,995; T-SHIRT, £695; GROOMING: ARMANI NEW NORMAL; COY WIGS, £104; TOP, SMILE; JEWELRY: 1755; JOHN HARRIS; SHAYH CHERI; BRACELETS: 800; DAVID YURMAN; TIE: RINGLES; £135; FLEX DOT; CUFF: 8005; WIRE: 8005; CUFF: 8005; T-SHIRT: 8005; BRACELET: 8495; SCALD; SERPENT CUFF; FLEX DOT; BRACELET: 800; HERICE; SHERCHAM; BRACELET: 800; JOHN HARRIS.

OPPOSITE PAGE: ISABEL PARIS; PROUDLY; FANTASION; INCONIA; **OPPOSITE PAGE:** BRACELET: 8495; PANTS: 8005; GROOMING: ARMANI NEW NORMAL; TWIST; CHAIN: BUNCEZ; 8005; CUFF: 8005; JOHN HARRIS; FISH STORES; SHERCHAM; HERICE; TIE: RINGLES.

Hair: Todd Zimmerman and Art Department
Makeup: Chris Colbeck and Art Department
Styling: Ina Schabert
Photography: Estelle and The Magnet Agency
Model: Jani Roberts of Management group

MARIECLAIRE.COM 271



to a tee

THIS PAGE: COAT, 800; T-SHIRT, 800; GROOMING: ARMANI NEW NORMAL; TOP, 800; TIE, 800; HAIR: PRICE; T-SHIRT: 800; BRACELET: 800; CUFF: 800; PARIS: 800; MEXICO: 800; LEQUIN: 800; HUNTER: 800; IN GOLDEN.

OPPOSITE PAGE: JACKET: 8295; PANTS: 8005; GROOMING: ARMANI NEW NORMAL; FABRIC: 800; T-SHIRT: 800; TIE: 800; DIAMOND: 800; DAVID YURMAN; SHER: 800; AHEAD; ORIGINALS.

Fashion Editor: EMERIE CAMPOS

160 MARIECLAIRE.COM

Chris Colbeck

www.art-dept.com

Art Department



Chris Colbeck

www.art-dept.com

Art Department



Chris Colbeck

www.art-dept.com

Art Department



Chris Colbeck

www.art-dept.com

Art Department



Chris Colbeck

www.art-dept.com

Art Department



Chris Colbeck

www.art-dept.com

Art Department



Chris Colbeck

www.art-dept.com

Art Department



Chris Colbeck

www.art-dept.com

Art Department



Chris Colbeck

www.art-dept.com

Art Department



Chris Colbeck

www.art-dept.com

Art Department



Chris Colbeck

www.art-dept.com

Art Department



Chris Colbeck

www.art-dept.com

Art Department



Chris Colbeck

www.art-dept.com

Art Department



Chris Colbeck

www.art-dept.com

Art Department



Chris Colbeck

www.art-dept.com

Art Department



В Д В И Ж Е Н И И

ЯРКИЕ КУРТКИ,
КОРОТКИЕ ТОПЫ,
АСИММЕТРИЧНЫЕ КУПАЛЬНИКИ
И ВЫСОКИЕ КРОССОВКИ
ТРЕБУЮТ СПОРТИВНОЙ ФИГУРЫ
И БОДРОГО НАСТРОЕНИЯ.
НА СТАРТ, ВНИМАНИЕ, МАРШ!

Фото: DAVID BELLEMERE
Стили: KATERINA ZOLOTOTRUBOVA

ВЫШЕ ВПЛОТНУ И ПО
ВИДЕРСКИИ В ПЛОТНУ,
И СЕ ПЕРИВЕРСАД,
ТОПИЗ УЛОЖКА С АТАС-
ТАНОС, КОЖИ И ПЛОТНУ,
БОСОНОЖИ И ПЛОТНУ,
ТОПИЗ И ПЛОТНУ
FERRAGAMO

Chris Colbeck

www.art-dept.com

Art Department



Chris Colbeck

www.art-dept.com

Art Department



Chris Colbeck

www.art-dept.com

Art Department



Chris Colbeck

www.art-dept.com

Art Department



Chris Colbeck

www.art-dept.com