

Art Department



Chris Colbeck

www.art-dept.com

Art Department



Платье из кружева,
ботфорты из кожи, все
ERMANNO SCERVINO.

210 СЕНТЯБРЬ 2019 | TATLER.RU

PHOTO: CLAIRE FOTSTEIN

Chris Colbeck

www.art-dept.com

Art Department



Платье из кружева, расшитое бисером, **SAINT LAURENT BY ANTHONY VACCARELLO**; пластиковая шляпа, **STEPHEN JONES FOR ROCHAS**; ботильоны из кожи и кружева, **FRANCESCO RUSSO**; серьги и браслет High Jewellery из белого золота с бриллиантами, все **GRAFF**.

Chris Colbeck

www.art-dept.com

Art Department



Chris Colbeck

www.art-dept.com

Art Department



Chris Colbeck

www.art-dept.com

Art Department



Chris Colbeck

www.art-dept.com

Art Department



Chris Colbeck

www.art-dept.com

Art Department



Chris Colbeck

www.art-dept.com

Art Department



Chris Colbeck

www.art-dept.com

Art Department



Шелковый жакет, расшитый пайетками, **SAINT LAURENT BY ANTHONY VACCARELLO**; солнцезащитные очки из пластика и металла, **CARRERA**; платиновые серьги с бриллиантами, **CARTIER**; кольцо High Jewellery из белого золота с бриллиантами, **JACOB & CO**.
Здесь и далее: шелковые манжеты с серебряными запонками, **KITON**.

192 СЕНТЯБРЬ 2019 | VESTI.RU

Chris Colbeck

www.art-dept.com

Art Department



Chris Colbeck

www.art-dept.com

Art Department



Chris Colbeck

www.art-dept.com

Art Department



Chris Colbeck

www.art-dept.com

Art Department



Chris Colbeck

www.art-dept.com

Art Department



Chris Colbeck

www.art-dept.com

Art Department



Chris Colbeck

www.art-dept.com

Art Department



Chris Colbeck

www.art-dept.com

Art Department



Chris Colbeck

www.art-dept.com

Art Department



Chris Colbeck

www.art-dept.com

Art Department



Abito in chiffon di seta stampata, **Saint Laurent** by **Anthony Vaccarella**. Turbante di cashmere **Valentino** boutique degli anni '70, **Madame Pauline Vintage**. Maxi orecchini d'ottone con finitura oro giallo e cristalli **Swarovski**, **Col&Leu**. Anello **Serpente** d'argento dorato con quarzo nilitato e madreperla e anello **Cocco** d'argento dorato con quarzo dorato e lapislazzuli, **Giovanni Raspini**. Sandali stampa leopardo bordati di pizzo, **Gianvito Rossi**. Pagina accanto: abito di seta, **Calvin Klein 205W39NYC**. Cappello di feltro e pelo di coniglio stampato, **Anthony Peto**. Orecchino di bronzo e glitter e orecchino d'oro con charm d'oro, **Strolli**.

Chris Colbeck

www.art-dept.com

Art Department



FRED LEIGHTON
19TH-CENTURY
BROOCHES AND OLD
MINE DIAMOND HAIR
CLIPS (PRICES ON
REQUEST); MIU MIU
DRESS (PRICE ON
REQUEST); COLDWELL
KERASILK STYLE
ENHANCING CURL
CREME (\$34)

MAY 2018

T&E
117

TOWNANDCOUNTRYMAG.COM

Chris Colbeck

www.art-dept.com

Art Department



VINTAGE ALEXANDER CALDER SPIRAL BROOCH, SILVER CUFF LINKS (WORN ON EAR), AND NECKLACE (PRICES ON REQUEST); VINTAGE HARRY BERTOIA SNAKE (\$38,000) AND CRAB (\$55,000) BROOCHES; MAX MARA TANK TOP (\$295); CHANEL LE CRAYON YEUX PRECISION EYE DEFINER IN BRUN-TEAK (\$30)

THE CULTURE OF BEAUTY

*By Sarah Maslin Nir
Photographs by Victor Demarchelier
Styled by Nicoletta Santoro*

MAY 2018

T&C
114

TOWNANDCOUNTRYMAG.COM

Chris Colbeck

www.art-dept.com

Art Department



FRED LEIGHTON
19TH-CENTURY DIAMOND
TIARA (PRICE ON
REQUEST); CARTIER
HIGH JEWELRY DIAMOND
EARRINGS (PRICE ON
REQUEST); STONE ISLAND
FOX SLIP (\$350);
BUMBLE AND BUMBLE
BB COLOR GLOSS IN
UNIVERSAL RED (\$34)

MAY 2018

T&C
118

TOWNANDCOUNTRYMAG.COM

Chris Colbeck

www.art-dept.com

Art Department



REPOSSI WHITE GOLD
AND DIAMOND EARRING
(PRICE ON REQUEST);
TOM BINNS HANDMADE
NECKLACE (PRICE ON
REQUEST); COVERGIRL
EASY BREEZY BROW
SHAPE + DEFINE
MASCARA (\$7). FOR
DETAILS SEE PAGE 147.

THE CULTURE OF BEAUTY

*Hair by Didier Malige. Makeup by
Chris Colbeck using Diorskin Star at
Art Department. Manicure by Gina Viviano
using Zoya. Casting by Steven Brown.*

MAY 2018 150 179 WWW.ART-DEPT.COM

Chris Colbeck

www.art-dept.com

Art Department



Chris Colbeck

www.art-dept.com

Art Department



Chris Colbeck

www.art-dept.com

Art Department



Chris Colbeck

www.art-dept.com

Art Department



Chris Colbeck

www.art-dept.com

Art Department



Chris Colbeck

www.art-dept.com

Art Department



Chris Colbeck

www.art-dept.com

Art Department



Chris Colbeck

www.art-dept.com

Art Department



Chris Colbeck

www.art-dept.com

Art Department



Chris Colbeck

www.art-dept.com

Art Department



Camicia dégradé, Piazza
Sempione, minigonna
frat multicolore, Clonett
(980 euro); seta come
turban, felpa,
Polo Ralph Lauren
(155 euro); al collo, nastro
per capelli, Jessie
Western; coltore vintage.

Chris Colbeck

www.art-dept.com

Art Department



Giacca a vento con
stampa grafica, *KWay*,
R&D Direct, triangolo
fantasia, *H&M*
(19,99 euro), pareo,
Nimbu (140 euro), cloche
di cotone *Gimaguas*
(35 euro), sandali
intrecciati *Alberta Ferretti*
(375 euro).

Nella pagina accanto
Abito con stampa grafica
(149 euro) e felpa
di cotone con cappuccio
(49,99 euro), tutto *H&M*.

Chris Colbeck

www.art-dept.com

Art Department



Chris Colbeck

www.art-dept.com

Art Department



Chris Colbeck

www.art-dept.com

Art Department

working girl

Hommage au tailoring fort,
celui qui fait les épaules larges
et les femmes puissantes.
Emprunt aux codes
masculins, qu'il est toujours
temps de rendre féminins.

Photographe Mel Karch
Styliste Virginie Dhello



Veste en laine et chemise en
popeline de coton, wool jacket, coton
poplin blouse, ZADIG & VOLTAIRE.
Moulti d'oreille, "Vogue", en or rose,
rose gold earring, VERNIER.

160 / AIR FRANCE MADAME

Chris Colbeck

www.art-dept.com

Art Department



Pantacourt en satin et body en jacquard, *satin gaucho pants, jacquard leotard*, PRADA. Veste de costume en laine, *wool suit jacket*, BRUNELLO CUCINELLI. Boucle d'oreille en métal doré, *gilded metal earring*, CIRO pour BURMA. Escarpins en satin, *satin pumps*, JIMMY CHOO.
Page de gauche, *opposite page* veste en laine et soie, T-shirt en jersey de coton, jupe en cuir d'agneau, *wool and silk jacket, cotton jersey tee-shirt, lambskin skirt*, LOUIS VUITTON. Motifs d'oreilles "Tonneau", en or rose, *rose gold earrings*, VHERNIER.

AIR FRANCE MADAME / 163

Chris Colbeck

www.art-dept.com

Art Department



Veste, pull en laine
et chemise en nylon,
wool jacket and sweater,
nylon blouse, MIU MIU.

166 / AIR FRANCE MADAME

AIR FRANCE MADAME / 167

Chris Colbeck

www.art-dept.com

Art Department



ON TALITA VON FURSTENBERG,
CHANEL DRESS (PRICE ON REQUEST);
MESSIKA PARIS HOOP EARRINGS
(\$2,960); YEPEM RING (\$1,900);
FOR DETAILS SEE PAGE 138.

*Hair by Michael Silva for
Leonor Greyl at the Wall Group
(Diane); Brian Buenaventura at
the Wall Group (Talita). Makeup
by Georgi Sandev for Estée Lauder
at Forward Artists (Diane);
Chris Colbeck for Chanel Beauty
at Art Department (Talita).
Manicures by Gina Viviano at
TraceyMattingly.com. Set design
by Cooper Vasquez for Cooper
Vasquez Studio. Flowers by
Designs by Ahn.*

Chris Colbeck

www.art-dept.com

Art Department



Chris Colbeck

www.art-dept.com

Art Department

THE CULTURE OF STYLE

ON ELLA RICHARDS: **MARNI** COAT (\$40,710), DRESS (\$11,470), AND SHOES (\$1,090); **BUCCELLATI** EARRINGS (PRICE ON REQUEST); **DIOR FINE** JEWELRY RINGS (PRICES ON REQUEST); **MAYBELLINE** TOTAL TEMPTATION MASCARA (\$10). FOR DETAILS SEE PAGE 171.

Hair by Didier Malige. Makeup by Chris Colbeck using Chanel Palette Essentielle at Art Department. Nails by Kelly B. using Dior Vernis. Set design by Jeffrey Miller at the Magnet Agency. Choreography by Alexandra Berger. Produced by Kranky Productions. Tailoring by Yasmine Ozelli for Lars Nord. Location courtesy Maison Margiela USA. Casting by Steven Brown.



MARCH 2010

T&C
143

TOWNANDCOUNTRYMAG.COM

Chris Colbeck

www.art-dept.com

Art Department



Chris Colbeck

www.art-dept.com

Art Department



Chris Colbeck

www.art-dept.com

Art Department



Chris Colbeck

www.art-dept.com

Art Department



Chris Colbeck

www.art-dept.com

Art Department



Chris Colbeck

www.art-dept.com

Art Department



All clothing and jewelry
by Gucci.

*Hair by Didier Malige.
Makeup by Chris Colbeck
at Art Department using
Chanel Rouge Coco.
Manicure by Tatyana
Molot for Marc Jacobs
Beauty. Casting by DM
Fashion Studio at Exposure
NY. Set design by Stefan
Beckman Studio.*

Chris Colbeck

www.art-dept.com

Art Department

THE GROUP A JUSTICE LEAGUE OF DESIGNERS *SEES THE FUTURE IN DOWN.*

By Erik Maza
Photograph by Victor Demarchelier
Styled by Nicoletta Santoro

The charm was in the details. Earlier this year, Moncler staged a grand production in Milan, the sort of theater a jaded fashion crowd expects from chairman and CEO Remo Ruffini. Inside the Palazzo delle Scintille were seven towering silver tents circled by onlookers restless to see the treasures underneath, wondering if the big reveal would live up to the hype. And then flaps parted and small domains came into view, immaculately appointed cells, each brimming with creations by some of the world's most acclaimed designers, including Valentino's Pierpaolo Piccioli, the romantic Simone Rocha, Kei Ninomiya (backed by Comme des Garçons), and Japanese streetwear powerhouse Hiroshi Fujiwara.

They were, to use Piccioli's phrase, "a hub of inventors," a fashion Justice League convened to reinterpret the classic Moncler down jacket. "Consumers are changing radically," Ruffini said, and the Genius project meets them halfway, giving them curated drops that hit boutiques and pop-ups strategically, rather than once a season: Rocha will be out in September, followed by Piccioli in October, when a pop-up in New York will carry all the Genius collections.

For the designers, Ruffini's call was a challenge. Ninomiya's all-black ensembles underlined his inventive use of fabric, while Piccioli's colorful nylon capes suggested ecclesiastical astronauts. Rocha didn't shy from making a practical staple her own, embellishing her down jackets with sequin flowers and frills in feminine pinks and reds. She told *T&C* she imagined the looks on "female Victorian mountain climbers who would bring cake and champagne with them up the mountain." But they'll work just fine in Gstaad. <



ALL CLOTHING
MONCLER. ALL
EARRINGS SIMONE
ROCHA. FOR DETAILS
SEE PAGE 95.

Hair by Romina Mancini with
Maya 11. Makeup by Chris Colbeck
for Diorskin Star. Manicure by
Gina Viviano for Chanel Le Vernis.

AUGUST 2018 T&C 66 TOWNANDCOUNTRYMAG.COM

AUGUST 2018 T&C 67 TOWNANDCOUNTRYMAG.COM

Chris Colbeck

www.art-dept.com

Art Department



Manteau en denim, *denim coat*,
BALENCIAGA. Baskets "Sk8-HI",
en toile, *canvas sneakers*, **VANS**.
Collier "Manette", en or jaune,
gold necklace, **SPALLANZANI**
MILANO 1880. Boucles d'oreilles
"Bamboo", en métal doré satiné,
gilded metal earrings, **KJL** chez
CIRO pour **BURMA**.

Page de droite, *opposite page*:
veste en laine et soie, pantalon
en denim et ceinture "Saddle",
en nylon et laiton, *wool and silk*
jacket, denim trousers, nylon and brass
belt, **DIOR**. Bandana en soie, *silk*
bandana, **HERMÈS**. Baskets en
toile, *canvas sneakers*, **CONVERSE**.

Collier et boucle d'oreille en
or jaune, bague en or jaune et
diamants, collection "Manette",
gold necklace and earrings, gold and
diamond ring, **SPALLANZANI**
MILANO 1880. Bracelet vintage
80's, en or jaune, *vintage gold*
bracelet, **COLLECTOR SQUARE**.
Manchette "Menottes", en or
jaune, *gold cuff bracelet*, **DINH VAN**.

Chris Colbeck

www.art-dept.com

Art Department



AIR FRANCE MADAME / 132

Chris Colbeck

www.art-dept.com

Art Department



Trench en denim, *denim trench coat*, MICHAEL MICHAEL KORS.
Boucles d'oreilles petit et grand modèle "Juste un Clou", en or jaune et diamants, *gold and diamond earring*, CARTIER. Collier "Tiffany City HardWear" et pendentif "Open Heart", en or jaune, *gold necklace and pendant*, TIFFANY & CO et ELSA PERETTI pour TIFFANY & CO.

Page de droite, *opposite page* cardigan en cachemire, *cashmere cardigan*, BARRIE. Pantalon en denim, *denim trousers*, STELLA MCCARTNEY. Baskets "SK8-HI", en toile, *canvas sneakers*, VANS. Bracelets et manchette "Coco Crush", en or jaune, *gold bracelets*, CHANEL JOAILLERIE. Créoles "Lilly Hoops", plaqué or, *gold plate earrings*, JENNIFER FISHER.

Mannequin : YSAUNNY BRITO c/o Elite.
Maquillage : CHRIS COLBECK c/o Art Department.
Coiffure : DENNIS DEVOY c/o Art Department.
Assistant photo : SUNNY FACER.
Opérateur digital : KRISTOFFER OLHSSON.
Assistante styliste : ANNABELLE SANGIN.

Chris Colbeck

www.art-dept.com

Art Department



AIR FRANCE MADAME / 159

Chris Colbeck

www.art-dept.com

Art Department



Chris Colbeck

www.art-dept.com

Art Department



Chris Colbeck

www.art-dept.com

Art Department



Chris Colbeck

www.art-dept.com

Art Department



Chris Colbeck

www.art-dept.com

Art Department



Chris Colbeck

www.art-dept.com

Art Department



Chris Colbeck

www.art-dept.com

Art Department



Chris Colbeck

www.art-dept.com

Art Department



MAXMARA
Джемпер из мохера, брюки
из шерсти, все — Max Mara

BEN MCCREIS

66 WWW.ELLE.RU

Chris Colbeck

www.art-dept.com

Art Department



HERMÈS
Водолазка из шелка, юбка-платье
из шелка и шелкового жаккарда,
все — Hermès; чокер, Saint Laurent

WWW.ELLE.RU 69

Chris Colbeck

www.art-dept.com

Art Department



Chris Colbeck

www.art-dept.com

Art Department



Chris Colbeck

www.art-dept.com

Art Department



Chris Colbeck

www.art-dept.com

Art Department



Chris Colbeck

www.art-dept.com

Art Department



Кожаный жакет, шелковое платье, все **ALEXANDER MCQUEEN**; хлопковое бра, **MIU MIU**; кожаные ботильоны, **ISABEL MARANT**; кольцо Summer in New York из белого золота с бриллиантами, **CHANEL FINE JEWELRY**.

ФЕВРАЛЬ 2019 | TATLER.RU 115

Chris Colbeck

www.art-dept.com

Art Department



Chris Colbeck

www.art-dept.com

Art Department



ХЕЛЕНА КРИСТЕНСЕН ОТМЕТИЛА ЮБИЛЕЙ
НА ФЕРМЕ В ГОРАХ ПОД НЬЮ-ЙОРКОМ. ВМЕСТЕ
С СОБАКОЙ, СЫНОМ И МЯСНЫМ РАГУ. «ТАТЛЕР»
ВЫЯСНИЛ, КАК И, ГЛАВНОЕ, ЗАЧЕМ СУПЕРМОДЕЛЬ
ДОШЛА ДО ИСТИННЫХ ЦЕННОСТЕЙ.

ТЕКСТ: ЖАННА ПРИСЯЖНАЯ

ФОТОГРАФ: JAN WELTERS

СТИЛЬ: РЕНАТА ХАРЬКОВА

ФЕВРАЛЬ 2019 | TATLER.RU 113

Chris Colbeck

www.art-dept.com

Art Department



CHANEL SLIP DRESS
(\$1,750); ERES BRA
(\$375) AND BRIEFS
(\$255); ASSAEL
NECKLACE (\$800)

MARCH 2017

T&C
173

TOWNANDCOUNTRYMAG.COM

Chris Colbeck

www.art-dept.com

Art Department



FENDI DRESS
(\$2,500); ERES BRA
(\$275) AND BRIEFS
(\$160); MONICA
RICH KOSANN
BRACELET (\$995).

OPPOSITE:
GIAMBATTISTA VALLI
DRESS (PRICE ON
REQUEST); CLINIQUE
BLEND IT YOURSELF
PIGMENT DROPS
(\$33). FOR DETAILS
SEE PAGE 216.

MARCH 2017

T&C
178

TOWNANDCOUNTRYMAG.COM

Chris Colbeck

www.art-dept.com

Art Department



Chris Colbeck

www.art-dept.com

Art Department



Chris Colbeck

www.art-dept.com

Art Department



Chris Colbeck

www.art-dept.com

Art Department



Chris Colbeck

www.art-dept.com

Art Department



Chris Colbeck

www.art-dept.com

Art Department



Chris Colbeck

www.art-dept.com

Art Department



Джемпер, David
Котэ; куртка из
лакированной
кожи и pony skin,
Isabel Marant;
платье из
бархата, Etro

WWW.ELLE.RU 93

Chris Colbeck

www.art-dept.com

Art Department



Пальто из шер-
сти и нейлона,
Undercover; худи,
adidas Originals;
платье из жаккар-
да, Ralph Lauren
Collection; носки,
Calzedonia; серь-
ги Love, Гелсе
золото, Cartier

Chris Colbeck

www.art-dept.com

Art Department



Chris Colbeck

www.art-dept.com

Art Department



MARCH 2016 THE 150 TOWNANDCOUNTRYMAG.COM

Chris Colbeck

www.art-dept.com

Art Department



Chris Colbeck

www.art-dept.com

Art Department



Chris Colbeck

www.art-dept.com

Art Department



Chris Colbeck

www.art-dept.com

Art Department



Chris Colbeck

www.art-dept.com

Art Department



Chris Colbeck

www.art-dept.com

Art Department



GET THE LOOK
Hair stylist Benoit Moynart created a romantic chignon with Phyto 9, a leave-in conditioner. The Marie Antoinette-esque twist gets its shine from Phyto Subtil Elixir and Haute Soyance.

Chris Colbeck

www.art-dept.com

Art Department



Chris Colbeck

www.art-dept.com

Art Department



Chris Colbeck

www.art-dept.com

Art Department



ROBERTO CAVALLI

Silk shirt, £960, and embossed leather trousers, £14,245, all Roberto Cavalli. Silk and lurex-mix shoes, £415, Dolce & Gabbana. For shopping details, see Address Book. Hair: Romina Maranti at See Management using Leonor Grey. Make-up: Chris Colbeck at Art Department. Using Chanel Le Lift and/s/s 2014. Manicure: Natalie Ly. Producer: Christopher Charlton. Production: BaM Production. Models: Cameron Russell at Models 1 and Kenal at LA Models. Child casting: Shay Nielsen. The ELLE team stayed at the Parker Palm Springs (theparkerpalm-springs.com)

Kal Z Feng

159

Chris Colbeck

www.art-dept.com

Art Department



Chris Colbeck

www.art-dept.com

Art Department

SALVATORE FERRAGAMO
BLAZER (\$3,200) AND PANTS
(\$1,590); **SPINELLI KILCOLLIN**
HOOP EARRINGS (PRICES ON
REQUEST) AND RINGS (FROM
\$2,400). *OPPOSITE:* **HERMES**
JACKET (\$4,200), BRALETTE
(\$910), AND PANTS (\$2,575);
CHARLOTTE CHESNAIS
EARRINGS (FROM \$3,390);
BREGUET WATCH (\$21,000);
LANCÔME ABSOLUE
REVITALIZING & BRIGHTENING
SOFT CREAM (\$208). FOR
DETAILS SEE PAGE 138.

*Hair by Leon Gorman at
Art Department. Makeup by
Chris Colbeck at Art Department.
Manicure by Gina Viviano at
Tracey Mattingly. Tailoring by
Yasmine Ozeelli.*



Chris Colbeck

www.art-dept.com

Art Department



Chris Colbeck

www.art-dept.com

Art Department



**This page and
opposite:** Cotton-mix
jacket, Richard Nicoll.
Silk shirt and matching
shorts, both Rochas.
Metallic leather
trainers, Hogan

Kai Z Feng

Chris Colbeck

www.art-dept.com

Art Department



Chris Colbeck

www.art-dept.com

Art Department



Hair by Didier Malige
Makeup by Chris Colbeck
using Chanel Les Beiges
Fluid Mascara by Negami
Yamanoto using Chanel
Le Vernis. Set design by
Marla Weinhoff Studio.

PAINTED LADY
Patterns and prints are now seasonless. Marni dress (\$2,300) and fur stole (\$3,590); LaCrasia gloves (\$300); Mokuba belt (price on request); Marni earrings (top, \$520; bottom, \$400). For details see page 156.

GET THE LOOK
To get into an Edward Hopper-inspired frame of mind, makeup artist Chris Colbeck drew from the painter's work and the recent fashion collections. "New realism is the zeitgeist for fall/winter," he says. Here, that translates into a muted copper palette using Chanel Les 4 Ombres eye shadow in Spices and Jones Contrast blush in Fandango.

JUNE/JULY 2014 | 125

Chris Colbeck

www.art-dept.com

Art Department

BETWEEN THE LINES

MUTED PALETTES, FUR TRIM, LOOSELY CINCHED WAISTS: AN ARTFUL INTERPRETATION OF THE PRE-FALL COLLECTIONS REVEALS THE SHAPE OF THINGS TO COME.

PHOTOGRAPHS BY PAUL WETHERELL



SHADED AREAS
Pink, a color once reserved for dolls and little girls, has matured quite well. Nina Ricci dress (\$4,290); Gabriele Colangelo fur cuff (\$230); Sermoneta gloves (\$500); Moluba belt (price on request); Fred Leighton earrings (price on request).

Styled by Nicoletta Santoro

JUNE/JULY 2014 | 117

Chris Colbeck

www.art-dept.com

Art Department



Chris Colbeck

www.art-dept.com

Art Department



THE T&C 50

BRUNELLO
CUCINELLI
SWEATER (\$2,245);
OLIVIA VON HALLE
DRESS (\$390);
TED MUEHLING
EARRINGS (\$350);
L'OREAL PARIS
LASH PARADISE
MASCARA (\$10)

SEPTEMBER 2018

T&C
167

TOWHANDCOUNTRYMAG.COM

Chris Colbeck

www.art-dept.com

Art Department



Chris Colbeck

www.art-dept.com

Art Department



Chris Colbeck

www.art-dept.com

Art Department



Chris Colbeck

www.art-dept.com

Art Department



Chris Colbeck

www.art-dept.com

Art Department



Chris Colbeck

www.art-dept.com

Art Department



*Madeline wears a cotton shirt tucked
into nylon pants HOOD BY AIR*

*OPPOSITE PAGE: Jared wears double
head snakeskin thigh-high boots
HOOD BY AIR*

Chris Colbeck

www.art-dept.com

Art Department



Chris Colbeck

www.art-dept.com

Art Department



Tawan wears a folded display plastic apron with black nylon Double Entry pants HOOD BY AIR

*OPPOSITE PAGE:
Whitney wears cotton Handkerchief
halters HOOD BY AIR*

Chris Colbeck

www.art-dept.com

Art Department



Chris Colbeck

www.art-dept.com

Art Department



Chris Colbeck

www.art-dept.com

Art Department



Chris Colbeck

www.art-dept.com

Art Department

Polyester-mix jacket, silk dress and leather boots, all Louis Vuitton. Cotton socks, Falke. For shopping details, see Address Book. Hair: Roberto Di Cuia at L'Atelier NYC using Oribe Hair Care. Make-Up: Chris Colbeck for Art Department using Nars. Manicure: Roseann Singleton for Art Department. Set Production: Victoria Craven for Urban NYC/LA



Kal Z Feng

Chris Colbeck

www.art-dept.com

Art Department



'I THINK I'M
BETTER NOW
THAT I'M MY
OWN
MASTER'

This page: Black and cream shearling and leather jacket, Coach. Black silk jumpsuit, Alexander McQueen. Gold earrings (worn throughout) Louis Vuitton
Opposite: Black silk dress, Burberry. Black leather boots and metal ring, both Louis Vuitton. Silver nylon-mix socks, Maria La Rosa

Kai Z Feng

154

Chris Colbeck

www.art-dept.com

Art Department



Silk shirt and matching skirt, both Givenchy by Riccardo Tisci. Brass earrings, Celine

Kal Z Feng

Chris Colbeck

www.art-dept.com

Art Department



Chris Colbeck

www.art-dept.com

Art Department



Chris Colbeck

www.art-dept.com

Art Department



Chris Colbeck

www.art-dept.com

Art Department



Chris Colbeck

www.art-dept.com

Art Department



Chris Colbeck

www.art-dept.com

Art Department



Chris Colbeck

www.art-dept.com

Art Department



Платье из полиэстера
с отделкой из кожи
и металла, **CELINE**;
серьги из желтого и
белого золота с цавори-
тами и бриллиантами,
VAN CLEEF & ARPELS.

124 август 2017 / TATLER.RU

ФОТО: JASON KIM

Chris Colbeck

www.art-dept.com

Art Department



Chris Colbeck

www.art-dept.com

Art Department



Chris Colbeck

www.art-dept.com

Art Department



Chris Colbeck

www.art-dept.com

Art Department



Chris Colbeck

www.art-dept.com

Art Department

dress, bib, and rings
on right middle and
ring finger by gucci,
beret by graham tyler,
earrings, cuff on right
wrist, and rings on left
hand by stephen web-
ster, choker worn as
bracelet on left wrist
by moutton collet.



Chris Colbeck

www.art-dept.com

Art Department



This page: From left: Wool-mix coat, £830, 3.1 Phillip Lim. Lip ring, stylist's own. Cotton-mix sequined dress, £3,500, Mulberry. Black gold and diamond earrings (just seen), price on request, Reppsi. Silk top, £530, 3.1 Phillip Lim. Ear cuffs, from top: White gold and diamond, £325, white gold and diamond, £690, white gold and diamond, £368, all Venus by Maria Tash

Chris Colbeck

www.art-dept.com

Art Department



Chris Colbeck

www.art-dept.com

Art Department



JAMIE BOCHERT,
model

Celine dress. Opposite: Lanvin
dress and necklaces.

Chris Colbeck

www.art-dept.com

Art Department



Chris Colbeck

www.art-dept.com

Art Department



Chris Colbeck

www.art-dept.com

Art Department



Chris Colbeck

www.art-dept.com

Art Department



Chris Colbeck

www.art-dept.com

Art Department



Chris Colbeck

www.art-dept.com

Art Department



Chris Colbeck

www.art-dept.com

Art Department



Chris Colbeck

www.art-dept.com

Art Department



Chris Colbeck

www.art-dept.com

Art Department



This page: Satin corset, £514, La Perla. Rayon-mix bra, £706, Hervé L'èger. Nylon-mix knickers, £235, Lisa Marie Fernandez. Feather headpiece, price on request, Louis Vuitton
Opposite: Sequined silk-mix dress, price on request, DSquared2. Patent-leather shoes, £485, Tod's

267

Chris Colbeck

www.art-dept.com

Art Department



Chris Colbeck

www.art-dept.com

Art Department



This page: Silk-mix jacket, price on request, and sequined cotton shorts, price on request, both Maison Martin Margiela
Opposite: Painted grey denim waistcoat, £2,435, Chanel. Black leather dress, £620, Zadig & Voltaire

Chris Colbeck

www.art-dept.com

Art Department



let loose

THIS PAGE:
JACKET, \$1,895,
PANTS, \$1,395,
GIORGIO
ARMANI NEW
NORMAL ON
WRIST: FROM
TOP: SMALL
FLEX CUFF, \$795,
JOHN HARDY;
SILVER CABLE
BRACELET, \$950,
DAVID YURMAN;
TWIST BANGLE,
\$1,295, FLEX DOT
CUFF, \$1,295,
WIDE BAMBOO
CUFF, \$895,
BAMBOO HOOK
BRACELET, \$495,
SCALED
SERPENT CUFF,
PRICE UPON
REQUEST,
SILVER CHAIN
BRACELET, \$795,
JOHN HARDY.

ON FACE:
L'ORÉAL PARIS
INFALLIBLE
PRO GLOW
FOUNDATION
IN COCOA.

OPPOSITE PAGE:
BLAZER, \$2,495,
PANTS, \$1,095,
GIORGIO
ARMANI NEW
NORMAL; TWIST
CHAIN BANGLE,
\$1,295, DOTTED
CUFF, \$1,295,
JOHN HARDY.
FOR STORES,
SEE SHOPPING
DIRECTORY.

Hair:
Yoichi Tomiwa
at Art Department
Makeup:
Chris Colbeck
at Art Department
Manicure:
Yuko Wada
at Atelier
Management
Prop styling:
Kate Stein at The
Magenat Agency
Model:
Lina Kebede at
d'management
group

PRODUCTION: UMBERTO BONICCONTI

MARIECLAIRE.COM 171

Chris Colbeck

www.art-dept.com

Art Department



to a tee

THIS PAGE: COAT,
\$3,295; PANTS,
\$1,495; GIORGIO
ARMANI NEW
NORMAL; TOP,
\$75; VINCE;
HAT, PRICE
UPON REQUEST;
ERIC JAVITS.

ON FACE:
L'ORÉAL
PARIS TRUE
MATCH LUMI
LIQUID GLOW
ILLUMINATOR
IN GOLDEN.

OPPOSITE PAGE:
JACKET, \$3,295,
PANTS, \$1,695,
GIORGIO
ARMANI NEW
NORMAL;
EARRING,
\$117, VENUS BY
MARIA TASH;
WIDE-BAND
RING, \$550,
DIAMOND-BAND
RING, \$4,900,
DAVID YURMAN;
SHOES, \$85,
ADIDAS
ORIGINALS.

Fashion Editor:
ENRIQUE CAMPOS

166 MARIECLAIRE.COM

Chris Colbeck

www.art-dept.com

Art Department



Chris Colbeck

www.art-dept.com

Art Department



Chris Colbeck

www.art-dept.com

Art Department



LIYA KEBEDE

“There’s a saying that when you’re pregnant in Africa you have one foot in the grave already,” Liya Kebede says as she waits to take the stage for a panel on maternal mortality at Tina Brown’s Women in the World Summit in Manhattan this spring. If her life had taken a different turn, the model and mother of two could have been one of the 250,000 women who die every year in Africa from pregnancy and childbirth complications. “I had the opportunity to have my children in New York, in an amazing facility with great doctors, versus what my experience would have been in Ethiopia.”

Since being discovered in her hometown of Addis Ababa as a teen, Kebede has had a whirlwind career, and at 38 she continues to book major campaigns, such as Estée Lauder. A decade ago, while serving as a goodwill ambassador for maternal and child health for the World Health Organization, she decided she wanted to do more than lend her face: “I was raising awareness, but I wanted a program on the ground.” Thus was the Liya Kebede Foundation born. (Two years later, in 2007, she also launched her brand, Lemlem, for which she employs traditional African weavers to craft clothing and accessories, which are sold at Barneys, J. Crew, and Net-A-Porter.)

Her foundation focuses on funding and training healthcare workers; it recently partnered with the NGO Amref Health Africa to train 15,000 midwives. “These women aren’t dying because there’s no cure for their problem. They’re dying from very simple conditions like hemorrhaging or high blood pressure, or the baby being too big,” Kebede says. “And these are all things that we know how to stop, prevent, and treat.” *Sarah Bray*

*Hair by Serge Normant at SergeNormant.com.
Makeup by Chris Colbeck for Art Department.
Nails by Ana-Maria at artistsbytimothypriano.com.
Set design by Jim Gratson at Atelier Management.
Produced by M4 Production.*

JUNE/JULY 2014

T&C
172

TOMANDCOUNTRYMAG.COM

Chris Colbeck

www.art-dept.com

Art Department



Chris Colbeck

www.art-dept.com

Art Department



Chris Colbeck

www.art-dept.com

Art Department



Chris Colbeck

www.art-dept.com

Art Department



Chris Colbeck

www.art-dept.com

Art Department



Chris Colbeck

www.art-dept.com

Art Department



Chris Colbeck

www.art-dept.com

Art Department



Chris Colbeck

www.art-dept.com

Art Department



Chris Colbeck

www.art-dept.com

Art Department



Manteau sans manches en vison sur veste en flanelle DICK, culotte et porte-jarretelles Liza en crêpe de soie stretch AGENT PROVOCATEUR, bas Individual Stay-Up WOLUCAO, collier Blacklight en cristaux cupchâin, métal et résine SWAROVSKI, montre BVLGARI. Page de gauche: manteau en laine mélangée et chemise en cuir TOO'S, mirrijupe en laine mélangée OSQUARED?, collier en or et argent DELFINA DELETTREZ, lunettes de soleil en acétate GRACIE PLASTIC, casquette en python OSQUARED?, boots ouvertes en daim, empèchement en maille et talons métallisés VIC MARTI.

Chris Colbeck

www.art-dept.com

Art Department



Chris Colbeck

www.art-dept.com

Art Department



Emerald chiffon, Swarovski crystal and silk gown, about \$10,675. Charlotte Olympia calf/skin sandals, \$595

Tiffany & Co platinum, diamond and black opal earrings, and platinum, diamond, aquamarine and turquoise Bib necklace, both price on request

howtospendit.com

67

Chris Colbeck

www.art-dept.com

Art Department



Elie Saab silk georgette and silk organza dress with embroidered waistband, £6,675. Giuseppe Zanotti leather shoes, £430

Tiffany & Co platinum, diamond and black opal necklace, and white gold, diamond and South Sea cultured pearl bracelet set, both price on request

howtospenshl.com

77

Chris Colbeck

www.art-dept.com

Art Department



Chris Colbeck

www.art-dept.com

Art Department



Chris Colbeck

www.art-dept.com

Art Department



Chris Colbeck

www.art-dept.com

Art Department



Chris Colbeck

www.art-dept.com

Art Department



Chris Colbeck

www.art-dept.com

Art Department



Chris Colbeck

www.art-dept.com

Art Department



Chris Colbeck

www.art-dept.com

Art Department



Chris Colbeck

www.art-dept.com

Art Department



Chris Colbeck

www.art-dept.com

Art Department



Chris Colbeck

www.art-dept.com

Art Department



Chris Colbeck

www.art-dept.com

Art Department



Chris Colbeck

www.art-dept.com

Art Department



Chris Colbeck

www.art-dept.com

Art Department



Chris Colbeck

www.art-dept.com

Art Department



*Hair by Dennis Devoy at White Room BK
using Kérastase. Makeup by Chris Colbeck at
Art Department using Chanel Les Beiges.
Manicure by Bethany Newell for Bethany
Newell. Tailoring by Maria Del Greco at
Lars Nord. Casting by Arianna Pradarelli at
WM Artist Management. Produced by
Nathalie Akiya at Kranky Productions.*

NOVEMBER 2017

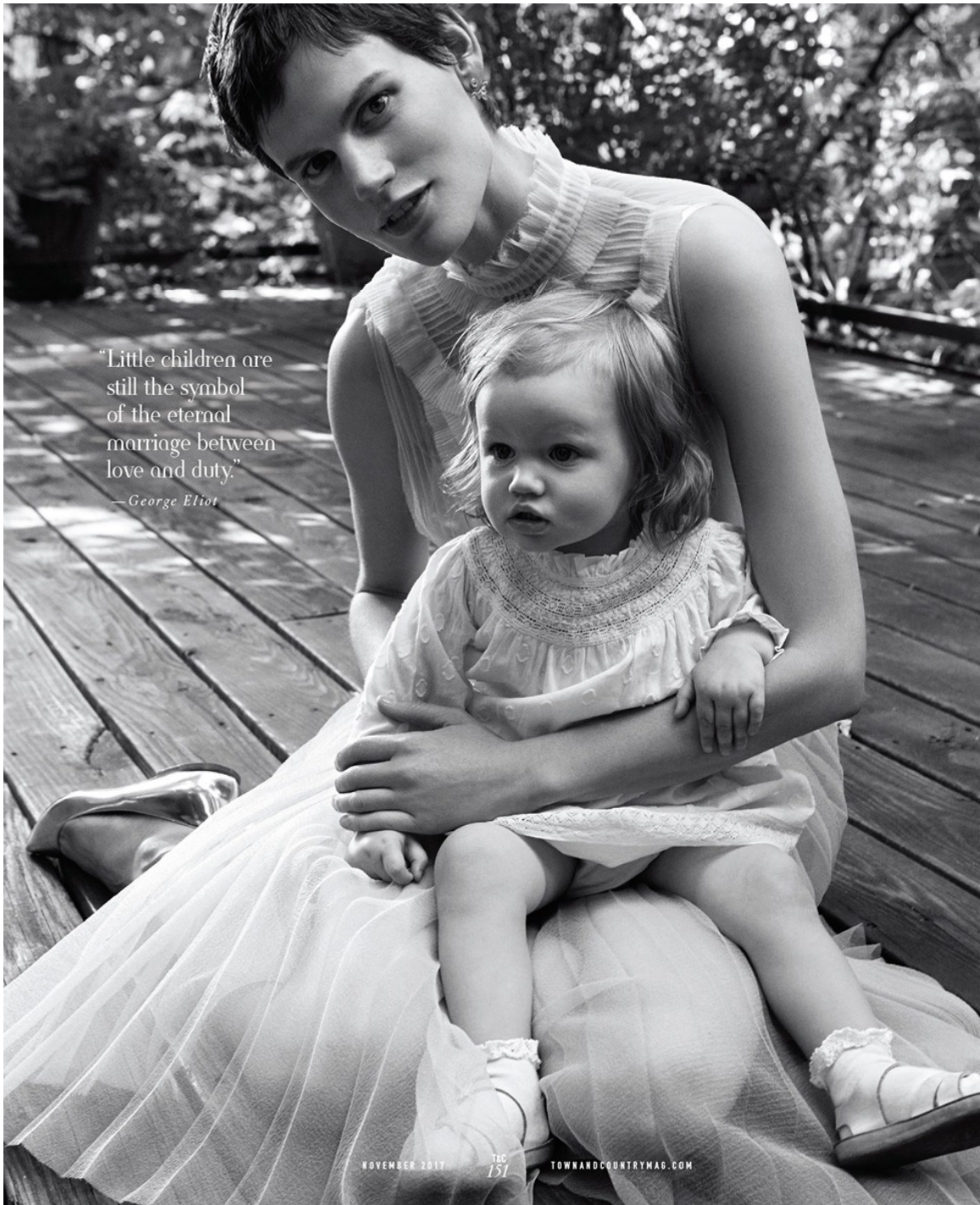
T&C
157

TOWNSANDCOUNTRYMAG.COM

Chris Colbeck

www.art-dept.com

Art Department



Chris Colbeck

www.art-dept.com

Art Department



Chris Colbeck

www.art-dept.com

Art Department



**ISABELLA
ROSSELLINI**

"The advantage of getting old is finding the courage to do what one likes," says the actress, citing her passion for animals. Rossellini has written a book, *My Chickens and I*, chronicling life on her Long Island farm, and she is two courses away from a master's degree in animal behavior and conservation.

CELINE SHIRT (\$1,150); NINA RUNSDORF EARRINGS (\$76,000); FD GALLERY CUFF LINKS (PRICE ON REQUEST); LANGOME COLOR DESIGN LIPSTICK IN WINE PARTY (\$23)

MAY 2017

143

TOWNANDCOUNTRYMAG.COM

Chris Colbeck

www.art-dept.com

Art Department



Chris Colbeck

www.art-dept.com

Art Department



Chris Colbeck

www.art-dept.com

Art Department



Chris Colbeck

www.art-dept.com

Art Department



BRUNELLO CUCINELLI
SHIRT (\$1,375) AND PANTS
(\$775); GEORG JENSEN
EARRINGS (\$350)

FASHION FILE

*Hair by Romina Mancini using May 11 at
Home Agency. Makeup by Chris Colbeck at
Art Department using Chanel Palette
Essentielle. Nails by Bethany for
Bethany Newell. Casting by Steven Brown.
Produced by Una Simone Harris.*

MARCH 2013

T&C
152

TOWNANDCOUNTRYMAG.COM

Chris Colbeck

www.art-dept.com

Art Department



ESCADA SHIRT (\$550)
AND PANTS (\$795);
GEORG JENSEN
EARRINGS (\$1,375). FOR
DETAILS SEE PAGE 171.

MARCH 2018

T&C
153

TOWNANDCOUNTRYMAG.COM

Chris Colbeck

www.art-dept.com

Art Department



SALVATORE
FERRAGAMO LEATHER
DRESS (\$3,900);
GEORG JENSEN
EARRINGS (\$195
PER PAIR)

MARCH 2018

T&C
150

TOWNANDCOUNTRYMAG.COM

Chris Colbeck

www.art-dept.com

Art Department



Chris Colbeck

www.art-dept.com

Art Department



GUCCI SHIRT
(\$1,400), SKIRT
(\$4,500), AND
BELT (\$420);
ARAKS BRA
(\$210); INEZ &
VINOODH
NECKLACE
(\$9,015) AND
RING (\$3,325)

THE T&C 50

AUGUST 2015

T&C
76

TOWARDCOUNTRYMAG.COM

Chris Colbeck

www.art-dept.com

Art Department



Chris Colbeck

www.art-dept.com

Art Department



HILFINGER
COLLECTION
DRESS (\$690),
BELETTEZ
EARRING (RIGHT
EAR, \$2,700),
MAKE UP
FOR EVER ULTRA
HD LIQUID
FOUNDATION (\$43).
FOR DETAILS SEE
PAGE 121.

THE T&E 50

*Hair by Dennis Devoe at Art Department
using Phyto. Makeup by Chris Colbeck
at Art Department using Dior Show. Nails by
Maki Sakamoto at Kate Ryan Inc. for Chanel
Le Vernis. Tailoring by Yasmine Ozzelli
for Lars Nord Studio. Set design by Daryl
McGregor at Lalaland Artists.*

AUGUST 2015  www.art-dept.com

Chris Colbeck

www.art-dept.com

Art Department



Chris Colbeck

www.art-dept.com

Art Department



Chris Colbeck

www.art-dept.com

Art Department



Chris Colbeck

www.art-dept.com

Art Department



Chris Colbeck

www.art-dept.com

Art Department



Dior dress; Fred
Leighton earrings and hair
ornament (on hand).
For details see page 235.

Hair by Didier Malige.
Makeup by Chris Colbeck at
Art Department using Chanel
Quadrax eyeshadow. Manicure
by Rica Romain using Chanel.
Set design by Jeffrey Miller.
Tailoring by Yasmine Orzelli
for Lars Nord Studio

Chris Colbeck

www.art-dept.com

Art Department



Chris Colbeck

www.art-dept.com

Art Department



Chris Colbeck

www.art-dept.com

Art Department



Chris Colbeck

www.art-dept.com

Art Department



Chris Colbeck

www.art-dept.com

Art Department



Chris Colbeck

www.art-dept.com

Art Department



Chris Colbeck

www.art-dept.com

Art Department



Chris Colbeck

www.art-dept.com

Art Department



Chris Colbeck

www.art-dept.com

Art Department



Chris Colbeck

www.art-dept.com

Art Department



Leather jacket, T-shirt, and pants SAINT LAURENT

Chris Colbeck

www.art-dept.com

Art Department



Jacket: SAINT LAURENT. Jumpsuit: STELLA MCCARTNEY.
Makeup by CHRIS COLBECK. Hair by DAVID VON CANNON.
Casting by ANDREW WEIR for ACW WORLDWIDE.

Chris Colbeck

www.art-dept.com

Art Department



杜鹃与刘雯如同
双生花，打动了世界。

白色短上衣
黑色饰边短裤
(均为 Azzedine Alaïa)

发型：Peter Gray using

L'Oréal Kinestase

化妆：Chris Colbeck

美甲：Maki Sakamoto

布景设计：Jeffrey Miller

模特：杜鹃、刘雯、

李丹妮、Tao Okamoto、

Ping Hui、康倩雯

Chris Colbeck

www.art-dept.com

Art Department



Chris Colbeck

www.art-dept.com

Art Department



Chris Colbeck

www.art-dept.com

Art Department

В Д В И Ж Е Н И И

ЯРКИЕ КУРТКИ,
КОРОТКИЕ ТОПЫ,
АСИММЕТРИЧНЫЕ КУПАЛЬНИКИ
И ВЫСОКИЕ КРОССОВКИ
ТРЕБУЮТ СПОРТИВНОЙ ФИГУРЫ
И БОДРОГО НАСТРОЕНИЯ.
НА СТАРТ, ВНИМАНИЕ, МАРШ!

Фото DAVID BELLEMERE

Стиль KATERINA ZOLOTOTRUBOVA



ПЛАЩ ИЗ ВИСКОЗЫ И КОЖИ, БЕРУКИ ИЗ ВИСКОЗЫ, БЕСЕ VERSUS VERSACE, ТОП ИЗ ХЛОПКА С ЭЛАСТАНОМ, ТОММУ HILFGER, БОСОНОЖКИ ИЗ ПАРУСИНЫ С ЭЛАСТАНОМ, SALVATORE FERRAGAMO.

Chris Colbeck

www.art-dept.com

Art Department



170

Chris Colbeck

www.art-dept.com

Art Department



Chris Colbeck

www.art-dept.com

Art Department



Chris Colbeck

www.art-dept.com

Art Department



Chris Colbeck

www.art-dept.com

Art Department



Chris Colbeck

www.art-dept.com

Art Department



RAZVEDRAVANJE

Topli dani su pred nama, te funkcionalnu slojevitost konačno (!) možemo da stavimo na pauzu i umesto toga prigrlimo eksperimentisanje formom, teksturom i statement bojama

*Fotografije:
Choi Yong Bin
Stajling:
Elizabeth Cabral*

Haljina **Ellery**,
minđuše **Eddie
Borgo**

Chris Colbeck

www.art-dept.com

Art Department



Chris Colbeck

www.art-dept.com

Art Department



NA OVOJ STRANI: Top
Maison Martin Margiela
Vintage; suknja **Alexander**
Wang; šešir **Gigi Burris**
NA STRANI LEVO: Ogrtač
Nina Ricci Vintage

Chris Colbeck

www.art-dept.com

Art Department



Chris Colbeck

www.art-dept.com

Art Department



Chris Colbeck

www.art-dept.com

Art Department



Chris Colbeck

www.art-dept.com

Art Department



Chris Colbeck

www.art-dept.com