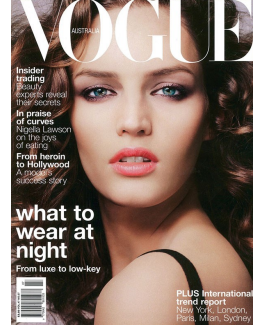


Art Department



Chris Colbeck

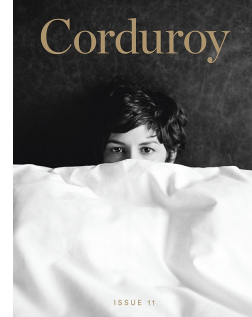
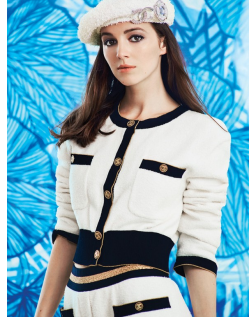
www.art-dept.com

Art Department



Bright Young Things

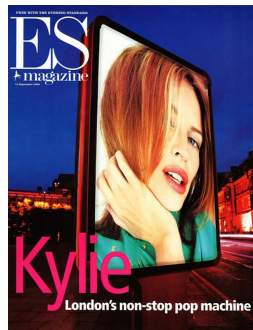
LADY KITTY SPENCER has a weakness for Italians. One in particular.



Chris Colbeck

www.art-dept.com

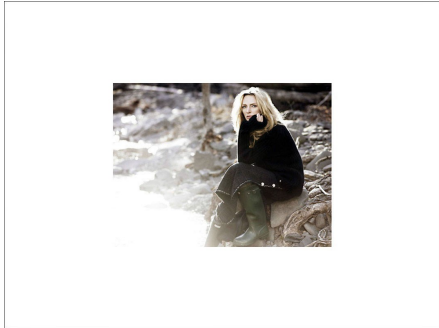
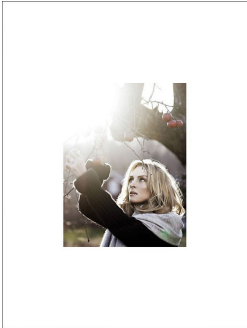
Art Department



Chris Colbeck

www.art-dept.com

Art Department



Cost by Alex Ross for
by Antonia Brown
Photo by Jerry Chin



*"I was RAISED by the
women in my life. That's
made me incredibly
STRONG and resilient"*

Stylist: The Four
Hair by Paris



Top and skirt by
Hugoboss for
Suptvinter



The RULE BREAKER

*From her genre-defining performances on
screen to her redolent Franciscan persona,
JULIETTE LEWIS is the embodiment of the
Hollywood stereotype. But as EYE CLAYTON
finds out, that uniqueness is exactly what
makes her a thoroughly modern lady*

Photographs by TONY D'AMARIZIO
Styling by KAREN GREGOROFF

Dress by Gabriella
Silk dress by Anne
Cheer by Loro



SISTINE STALLONE
Sistine Stallone is the only woman in the world to have a son named Stallone. She is the daughter of Rocky Balboa, the iconic boxer played by Sylvester Stallone. She is a model and actress who has appeared in several films and television shows. She is known for her beautiful features and her ability to carry off a variety of styles.



KIT KEEAN
Kit Kean is a model and actress who has appeared in several films and television shows. She is known for her beautiful features and her ability to carry off a variety of styles.



KIKI LAYNE
Kiki Layne is a model and actress who has appeared in several films and television shows. She is known for her beautiful features and her ability to carry off a variety of styles.

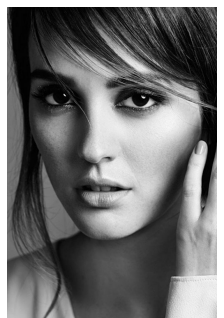
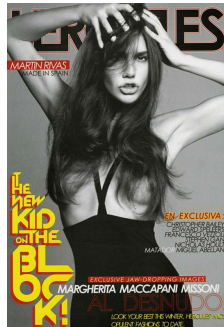


**RESIDENT
MISCHIEF**
SAILOR BRINKLEY-COOK
TAKES FALL'S CASUAL LUXURY
OUT FOR A JOYRIDE

Chris Colbeck

www.art-dept.com

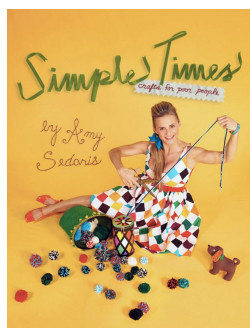
Art Department



Chris Colbeck

www.art-dept.com

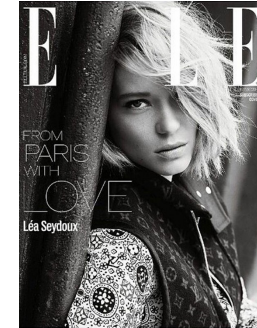
Art Department



Chris Colbeck

www.art-dept.com

Art Department



Chris Colbeck

www.art-dept.com