

Art Department



Devra Kinery

www.art-dept.com

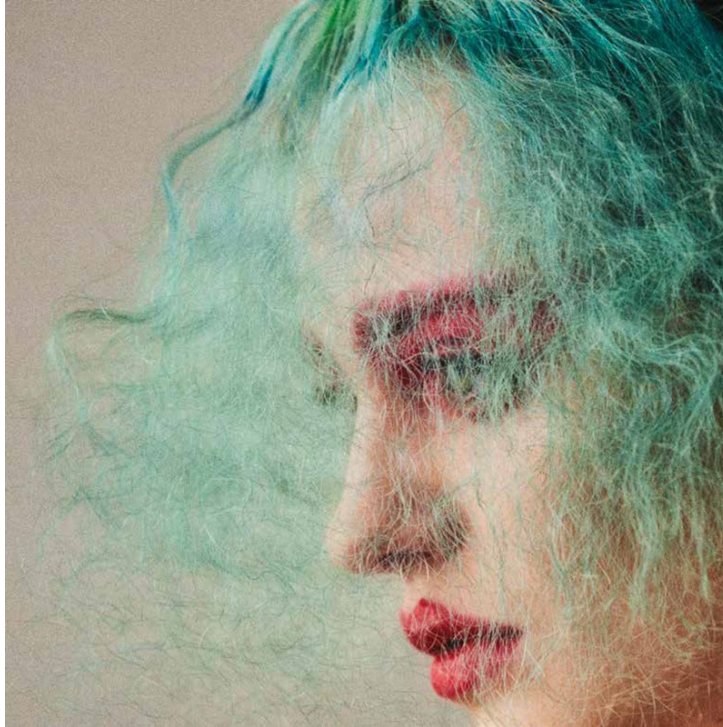
Art Department



Devra Kinery

www.art-dept.com

Art Department



Devra Kinery

www.art-dept.com

Art Department



Devra Kinery

www.art-dept.com

Art Department



Devra Kinery

www.art-dept.com

Art Department



Devra Kinery

www.art-dept.com

Art Department



Devra Kinery

www.art-dept.com

Art Department

Partie de campagne



Devra Kinery

www.art-dept.com

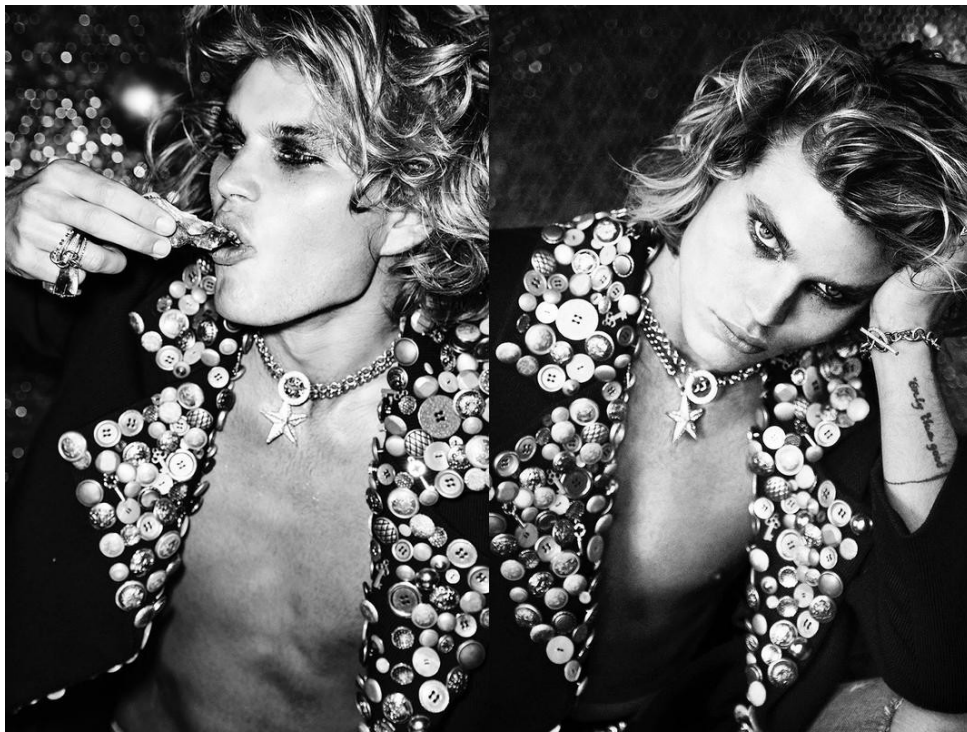
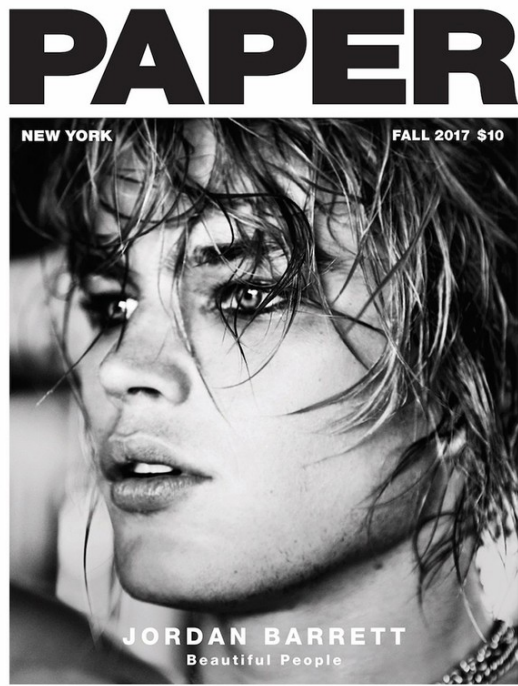
Art Department



Devra Kinery

www.art-dept.com

Art Department



Devra Kinery

www.art-dept.com

Art Department



Devra Kinery

www.art-dept.com

Art Department



Devra Kinery

www.art-dept.com

Art Department



MODELO REAL
Kate Upton, la nueva
imagen del Liverpool
Fashion Fest, apuesta
por la naturalidad y la
sensualidad, pero sin
perder jamás de vista
la esencia de lo que a
ella le sostiene: ser real.



Devra Kinery

www.art-dept.com

Art Department



Devra Kinery

www.art-dept.com

Art Department



Devra Kinery

www.art-dept.com

Art Department



Devra Kinery

www.art-dept.com

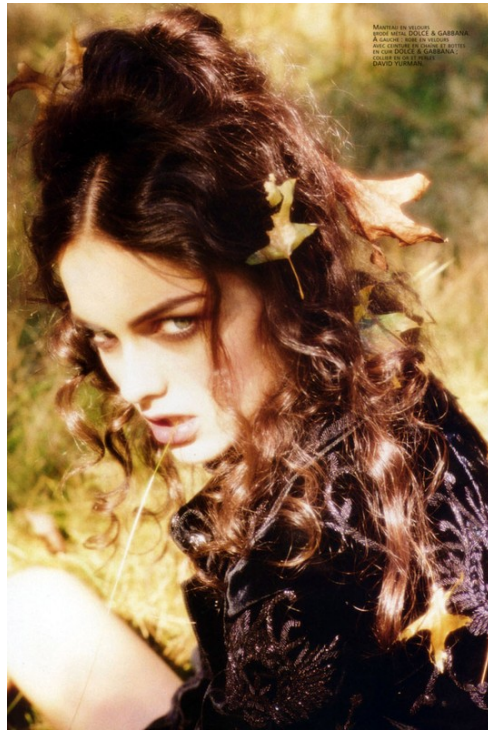
Art Department



Devra Kinery

www.art-dept.com

Art Department



Devra Kinery

www.art-dept.com

Art Department



Devra Kinery

www.art-dept.com

Art Department



Devra Kinery

www.art-dept.com

Art Department



Devra Kinery

www.art-dept.com

Art Department



Devra Kinery

www.art-dept.com

Art Department



Devra Kinery

www.art-dept.com

Art Department



Devra Kinery

www.art-dept.com

Art Department



Devra Kinery

www.art-dept.com

Art Department



Devra Kinery

www.art-dept.com

Art Department



Devra Kinery

www.art-dept.com