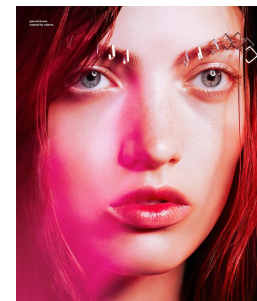
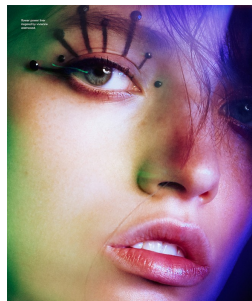
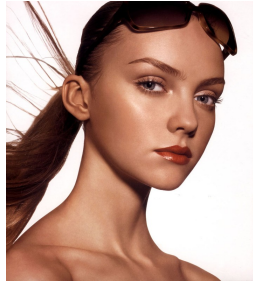


Art Department



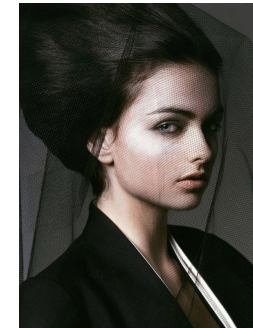
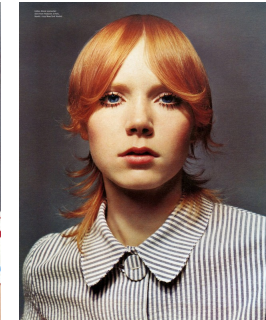
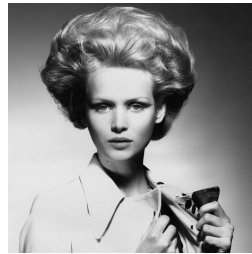
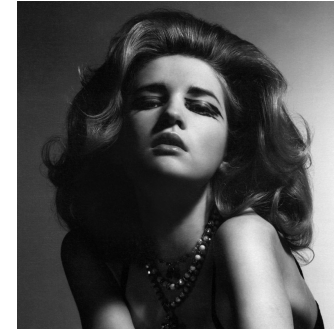
Devra Kinery

www.art-dept.com

Art Department



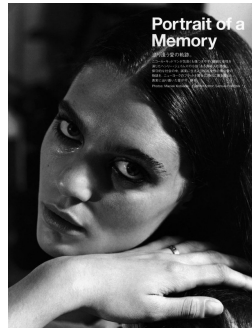
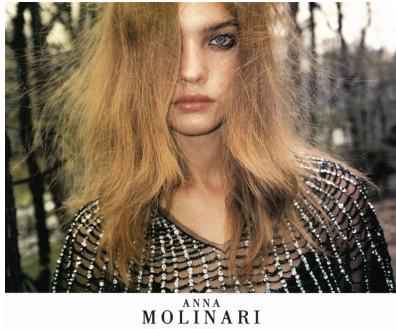
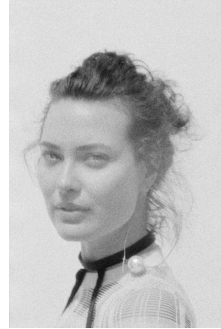
PHOTOGRAPHED BY GUY A ROCH
SPELLBOUND
WHAT IS MORE ALLURING THAN A WOMAN
WITH A WHIFF OF FRANK STILES OF AMBERLOR
ADD A SWATH OF FRANK STILES OF AMBERLOR
COMBINATION BY A COQUETTE EMBROID
The model is wearing a black and white striped top with a white collar. The background is a plain, light color. The lighting is soft, highlighting the model's features.



Devra Kinery

www.art-dept.com

Art Department



Devra Kinery

www.art-dept.com

Art Department



Devra Kinery

www.art-dept.com