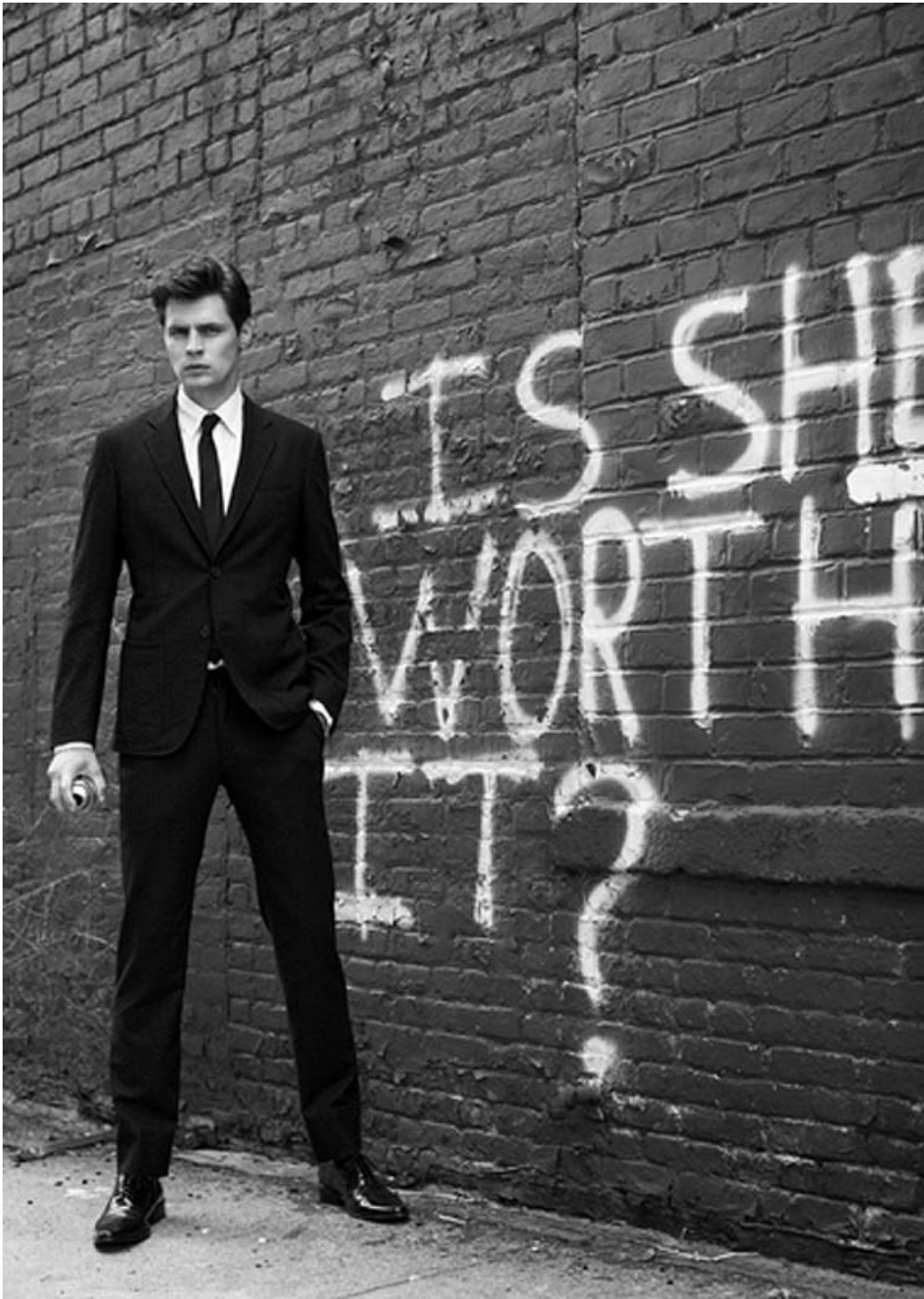


Art Department



Hector Simancas

www.art-dept.com

Art Department



Hector Simancas

www.art-dept.com

Art Department



Hector Simancas

www.art-dept.com

Art Department



Hector Simancas

www.art-dept.com

Art Department

ELLE **MAN**

*Sin embargo, a mí me parece
que debemos reconocer
que el hombre con todos
sus cualidades nobles...
todavía lleva en su mano corporal
el sello indelible de su
origen humilde*

*Fotos Danny Cordozo
estilismo de moda Danny Santiago
producción elle México*

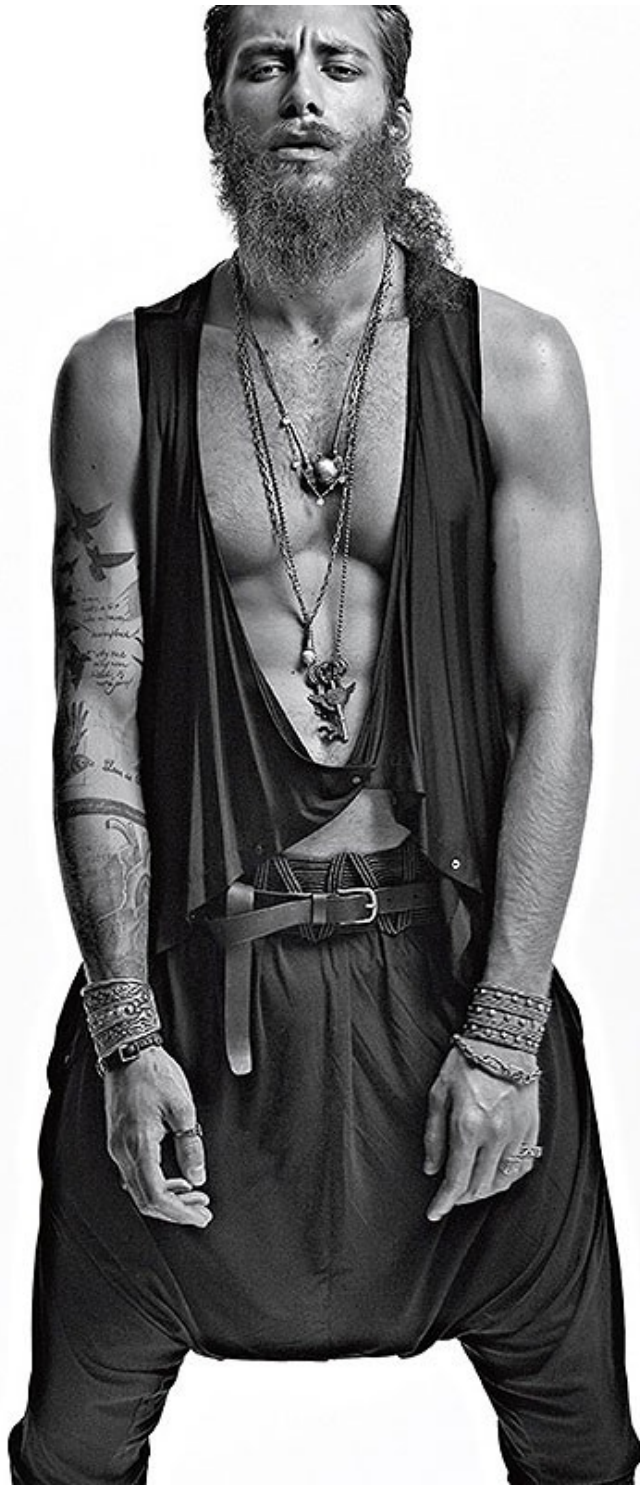


Hector Simancas

www.art-dept.com

Art Department

EN ESTA PAGINA:
Chaleco, **MAISON
MARTIN MARGIELA.**
Pendientes, **SKINORAF.**
PAGINA OPUESTA:
Toda la joyería,
MASHA ARCHER.



Hector Simancas

www.art-dept.com

Art Department

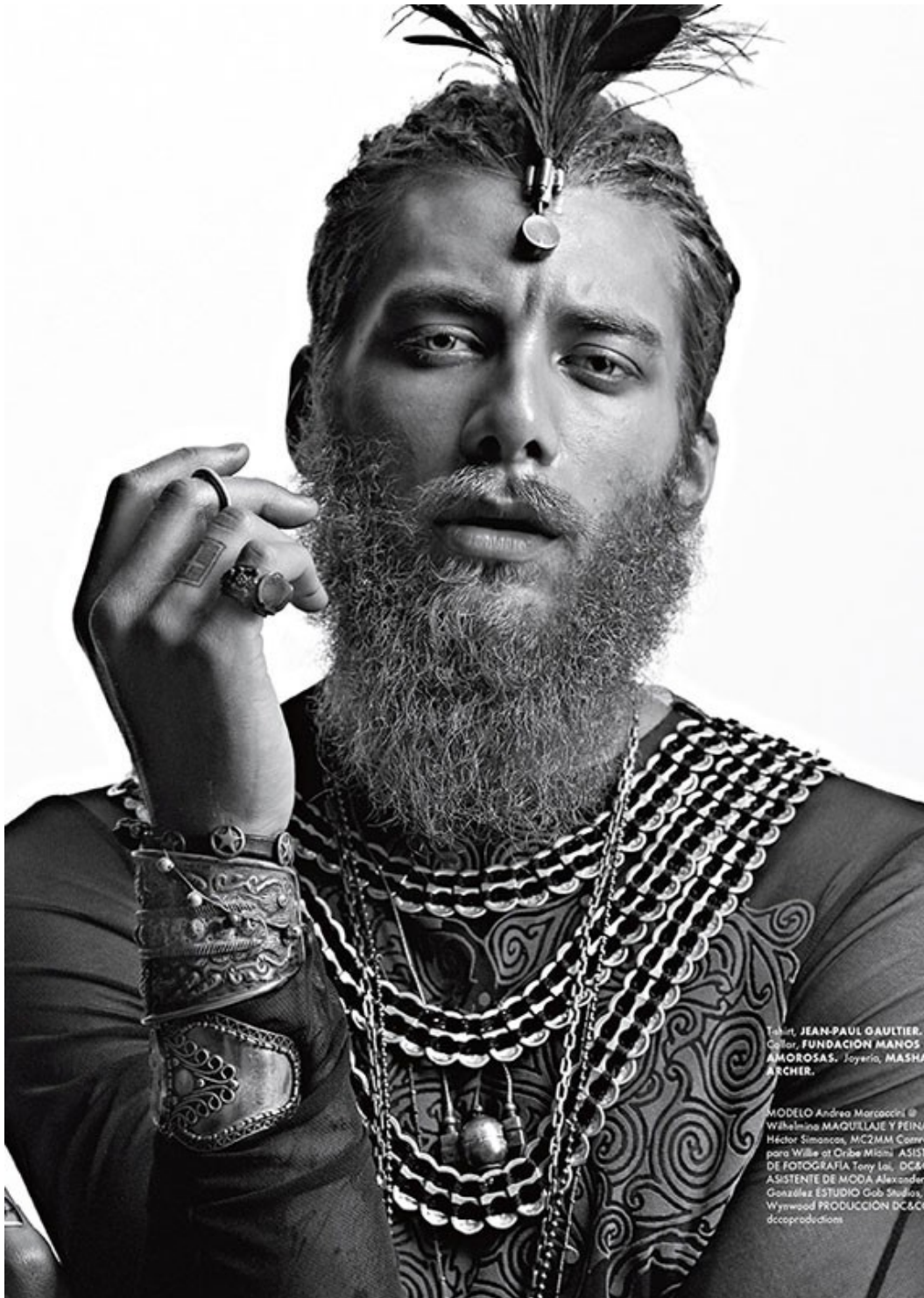


Chamarrá y pantalones,
BOTTEGA VENETA.
Collar, **MASHA ARCHER.**
Cinturón, **RALPH LAUREN.**
Botas, **DIESEL.**

Hector Simancas

www.art-dept.com

Art Department



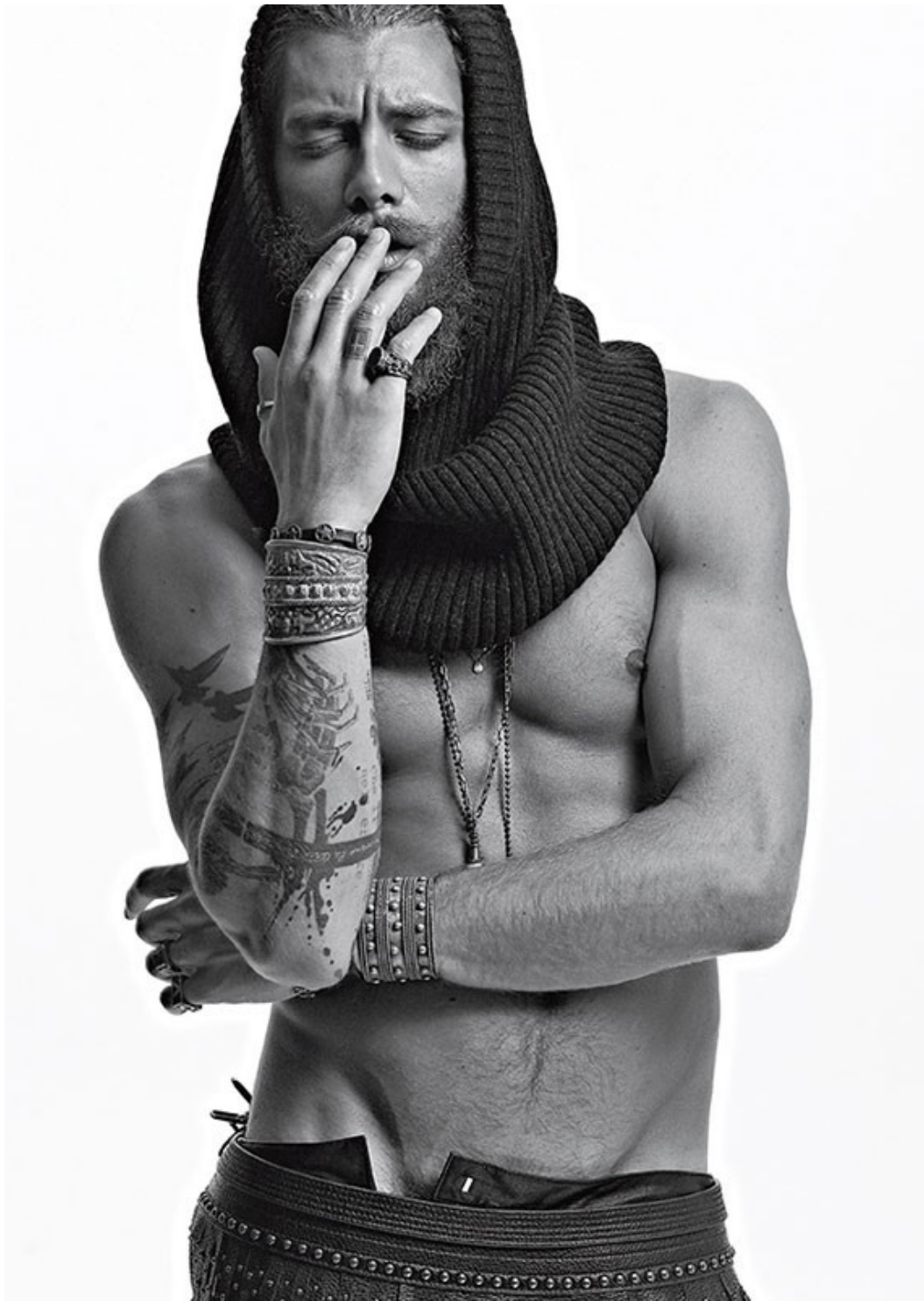
T-shirt, JEAN-PAUL GAULTIER.
Collar, FUNDACION MANOS
AMOROSAS. Joyeria, MASHA
ARCHER.

MODELO Andrea Marcocchini @
Wilhelmina MAQUILLAJE Y PEINA
Héctor Simancas, MC2MM Corro
para Willie at Criba Miami ASISTE
DE FOTOGRAFIA Tony Lal, DC&C
ASISTENTE DE MODA Alexander
González ESTUDIO Gob Studios,
Wynwood PRODUCCION DC&C
dcccproductions

Hector Simancas

www.art-dept.com

Art Department



Hector Simancas

www.art-dept.com

Art Department



Hector Simancas

www.art-dept.com

Art Department



Hector Simancas

www.art-dept.com

Art Department



Hector Simancas

www.art-dept.com

Art Department



Hector Simancas

www.art-dept.com

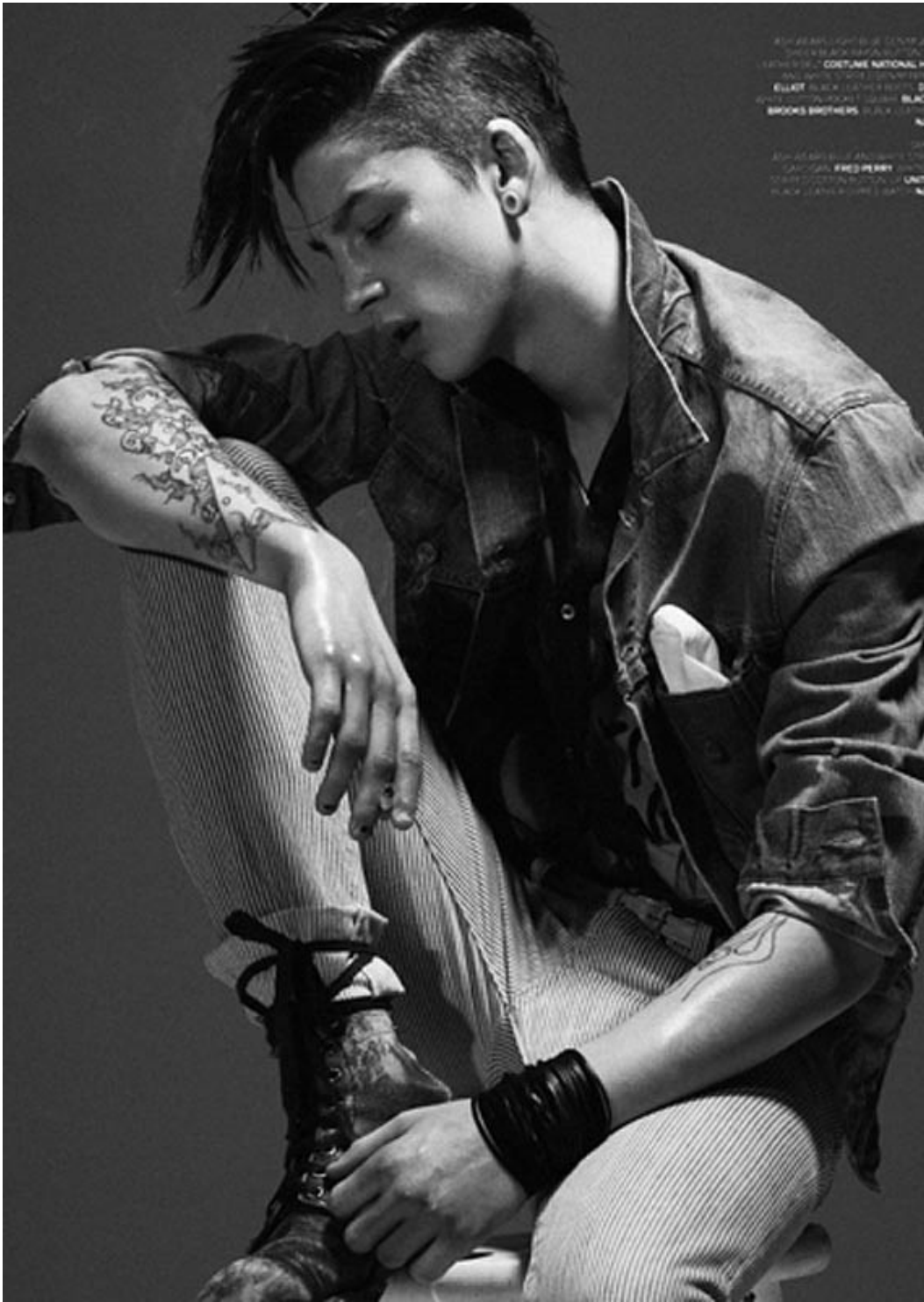
Art Department



Hector Simancas

www.art-dept.com

Art Department



Hector Simancas

www.art-dept.com

Art Department



Hector Simancas

www.art-dept.com

Art Department



Hector Simancas

www.art-dept.com