

Art Department



Keiko Takagi

www.art-dept.com

Art Department



Keiko Takagi

www.art-dept.com

Art Department



Keiko Takagi

www.art-dept.com

Art Department



Keiko Takagi

www.art-dept.com

Art Department



Keiko Takagi

www.art-dept.com

Art Department



Keiko Takagi

www.art-dept.com

Art Department



Keiko Takagi

www.art-dept.com

Art Department



Keiko Takagi

www.art-dept.com

Art Department



Keiko Takagi

www.art-dept.com

Art Department



Keiko Takagi

www.art-dept.com

Art Department



Keiko Takagi

www.art-dept.com

Art Department



Keiko Takagi

www.art-dept.com

Art Department



Keiko Takagi

www.art-dept.com

Art Department



Keiko Takagi

www.art-dept.com

Art Department



Keiko Takagi

www.art-dept.com

Art Department



Keiko Takagi

www.art-dept.com

Art Department



Keiko Takagi

www.art-dept.com

Art Department



Keiko Takagi

www.art-dept.com

Art Department



Keiko Takagi

www.art-dept.com

Art Department



Keiko Takagi

www.art-dept.com

Art Department



Keiko Takagi

www.art-dept.com

Art Department



Keiko Takagi

www.art-dept.com

Art Department



Keiko Takagi

www.art-dept.com

Art Department



Keiko Takagi

www.art-dept.com

Art Department



Keiko Takagi

www.art-dept.com

Art Department



Keiko Takagi

www.art-dept.com

Art Department



Keiko Takagi

www.art-dept.com

Art Department



Keiko Takagi

www.art-dept.com

Art Department



◀
REVLON LUSTROUS EYE SHADOWS

▶
MAYBELLINE
VOLUM' EXPRESS MASCARA

Keiko Takagi

www.art-dept.com

Art Department



Keiko Takagi

www.art-dept.com

Art Department

Look Great



ICE, ICE,
BABY!

White hot

The beauty forecast: a wonderland of winter-white makeup. Turn the page for our favorite frosty finds.

SHAPE.COM JANUARY/FEBRUARY 2014 45

Keiko Takagi

www.art-dept.com

Art Department



Keiko Takagi

www.art-dept.com

Art Department



Keiko Takagi

www.art-dept.com

Art Department



Keiko Takagi

www.art-dept.com

Art Department



Keiko Takagi

www.art-dept.com

Art Department



Keiko Takagi

www.art-dept.com

Art Department



Keiko Takagi

www.art-dept.com

Art Department



Keiko Takagi

www.art-dept.com

Art Department



Keiko Takagi

www.art-dept.com

Art Department



"People with oily skin
have fewer fine lines
and wrinkles because
oil protects skin from
free-radical damage."
—Leslie Baumann, M.D.



142 WOMEN'S HEALTH SEPTEMBER 2009 womenshealthmag.com

Keiko Takagi

www.art-dept.com

Art Department



Keiko Takagi

www.art-dept.com

Art Department



Keiko Takagi

www.art-dept.com

Art Department



124

Keiko Takagi

www.art-dept.com

Art Department



STEP
1
primer

Shadow primers help makeup glide on (and stay on), while hiding any red or blue tones on your lids from veins. "The best ones are opaque, match your skin tone, and dry to a matte finish," says makeup artist Mally Roncal. Using your fingers, pat primer from upper lash line to brow bone...wherever the shadow will go. Try Nars Pro-Prime Smudge Proof Eyeshadow Base, \$24, narscosmetics.com.

Keiko Takagi

www.art-dept.com

Art Department



Keiko Takagi

www.art-dept.com

Art Department



Keiko Takagi

www.art-dept.com

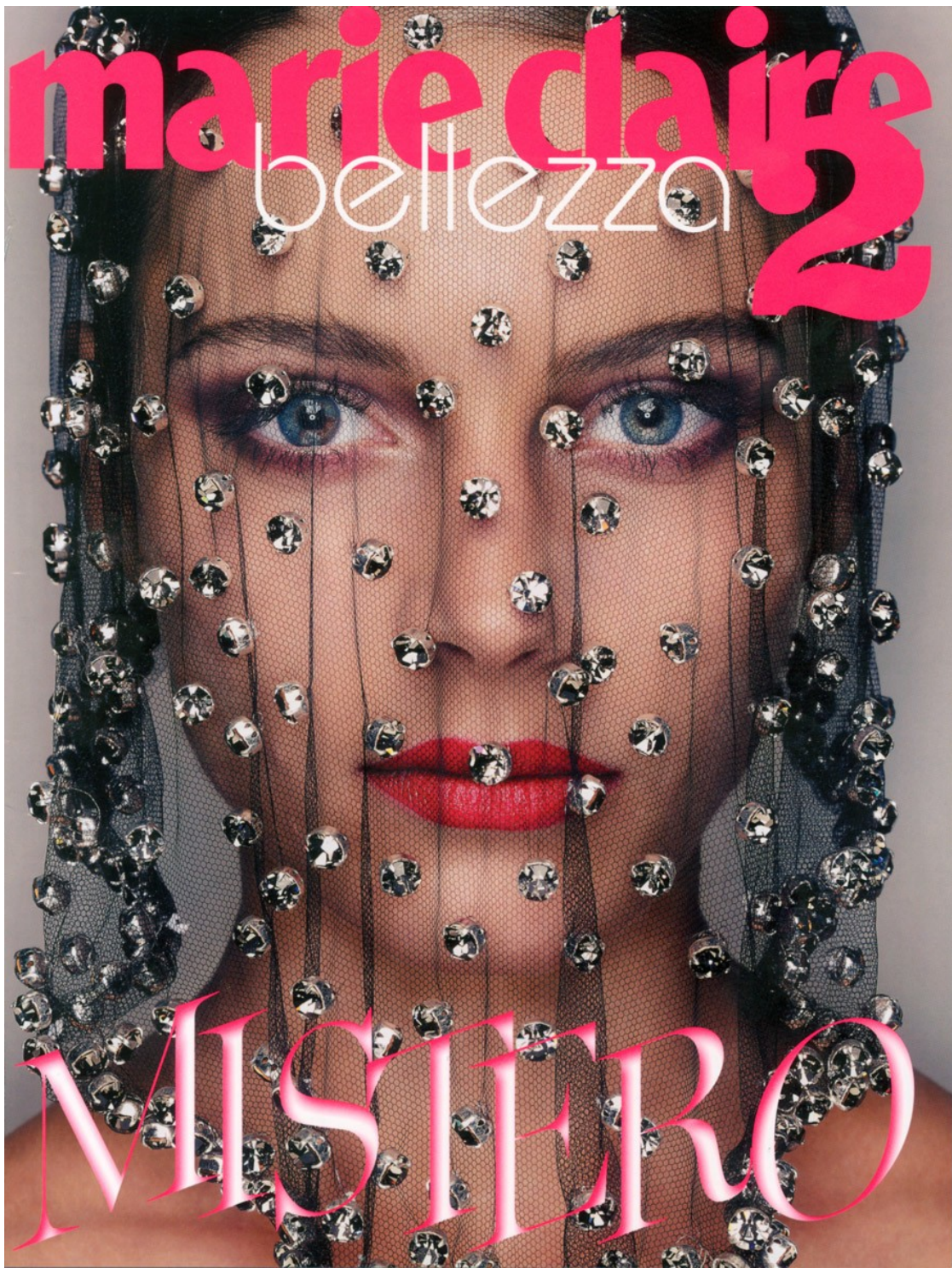
Art Department



Keiko Takagi

www.art-dept.com

Art Department



Keiko Takagi

www.art-dept.com

Art Department



photographed by PHILIPPE SALOMON

108 more.com | JULY/AUGUST 2011



Anti-
AGING
HAIR
COLOR:
WHAT'S
RIGHT
FOR
YOU?



WANT TO KNOCK YEARS OFF
YOUR AGE WITHOUT A SINGLE
INCISION, INJECTION OR BANK
LOAN? TRY A CHANGE OF HAIR
COLOR. TO ILLUMINATE YOUR
COMPLEXION, HIGHLIGHT YOUR
BEST FEATURES AND IMPROVE
YOUR SEX LIFE (UH-HUH), JUST
FOLLOW OUR SHADE-BY-SHADE
GUIDE TO YOUR BEST NEW HUE

by CHRISTINE FELLINGHAM

Keiko Takagi

www.art-dept.com

Art Department



Keiko Takagi

www.art-dept.com

Art Department



Keiko Takagi

www.art-dept.com

Art Department



Keiko Takagi

www.art-dept.com

Art Department



Keiko Takagi

www.art-dept.com

Art Department



Keiko Takagi

www.art-dept.com

Art Department



Keiko Takagi

www.art-dept.com

Art Department



Keiko Takagi

www.art-dept.com

Art Department



Keiko Takagi

www.art-dept.com

Art Department



Keiko Takagi

www.art-dept.com

Art Department



Keiko Takagi

www.art-dept.com

Art Department



Keiko Takagi

www.art-dept.com

Art Department



Keiko Takagi

www.art-dept.com

Art Department



Keiko Takagi

www.art-dept.com

Art Department



Keiko Takagi

www.art-dept.com

КРАСОТА *до*сье

Куда идти и что делать,
чтобы не превратиться
из принцессы в зама-
рашку, когда куранты
пробьют двенадцать?
Фотограф: *Philippe Salomon*

**Полночь
в МОСКВЕ**

100% макияж: крем Infallible, 120,
тональный крем Perfect, 120,
тональный крем, 07, 15, тушь
— Dior; губы: Carbon Black,
Dior; ногти: Shine, 04, лак
— Dior; украшения: Ploest & Shine,
Dior; серьги: L'Oréal Paris.
Украшения с блестками,
Dolce & Gabbana;
Украшения из перьев ма-
монт: Giorgio Armani;
Украшения из золотого
и серебристого золота
и бриллиантами,
Dior Joaillerie.

WWW.TATLER.RU TATLER 100

www.art-dept.com

Art Department



modern matte

Skip the gloss—a bright pink matte lipstick is a fresh spin on statement-making lips.

275

Keiko Takagi

www.art-dept.com

Art Department



ON MODEL: EARRINGS, LULU'S; FLOWER RING, BETSEY JOHNSON; CRYSTAL RING, SWAROVSKI; RING, R.T. GRZANO.

bold burgundy

Leave an unforgettable impression long after the last dance with lips drenched in this rich color.

Senior Fashion Editor:
Annebet Duvall. Hair: Deycke
Heidom for Shu Uemura Art
of Hair at See Management.
Makeup: Keiko Takagi for
Chanel at See Management.
Manicure: Tatyana Molot for
Artistsbytimothypriano.com.

Keiko Takagi

www.art-dept.com

Art Department



Keiko Takagi

www.art-dept.com

Art Department



Keiko Takagi

www.art-dept.com

Art Department



unblemished

photographed by jamie neison

To create the illusion of perfect skin on-screen during the 1920s, film stars such as Jean Harlow, Clara Bow, and Joan Crawford wore products created by the late movie makeup artist Max Factor. Many were so devoted that they appeared in advertisements for the brand, free of charge. Suffice it to say, real women followed their lead, snatching up the products when they hit stores. In the 1930s, the use of color film led to thinner formulas and more shades, and the advent of high-definition video in the early 21st century required further cosmetic breakthroughs, like airbrush applicators and micro-powders, to keep actors looking flawless. Now, hot on the heels of the success of *Avatar*, the arrival of 3-D television is imminent: ESPN plans on launching a station in time for the World Cup in June, and the Discovery Channel has partnered with Sony and Imax to create a 3-D network. Soon, it won't just be soccer stars and families of manatees coming at you from every direction, but stray hairs and blemishes, as well. Who knows what brilliant innovations the beauty world will respond with.

hair: *diana conte* for bumble & bumble. makeup: *keiko takagi* at aee management.
makeup assistant: *sophie ono*. model: *clara* at major.
FOR MAKEUP TRY: hd invisible coverage foundation in marble, hd invisible cover concealer in ivory,
hd microfinish powder, and aqua eyes eyeliner in white 141. all, make up for ever.

147

Keiko Takagi

www.art-dept.com

Art Department



Keiko Takagi

www.art-dept.com