

# Art Department



Misuzu Miyake

[www.art-dept.com](http://www.art-dept.com)

# Art Department



Misuzu Miyake

[www.art-dept.com](http://www.art-dept.com)

# Art Department



Misuzu Miyake

[www.art-dept.com](http://www.art-dept.com)

# Art Department



Misuzu Miyake

[www.art-dept.com](http://www.art-dept.com)

# Art Department



Misuzu Miyake

[www.art-dept.com](http://www.art-dept.com)

# Art Department



Misuzu Miyake

[www.art-dept.com](http://www.art-dept.com)

# Art Department



Misuzu Miyake

[www.art-dept.com](http://www.art-dept.com)

# Art Department



Misuzu Miyake

[www.art-dept.com](http://www.art-dept.com)



# Art Department



Misuzu Miyake

[www.art-dept.com](http://www.art-dept.com)

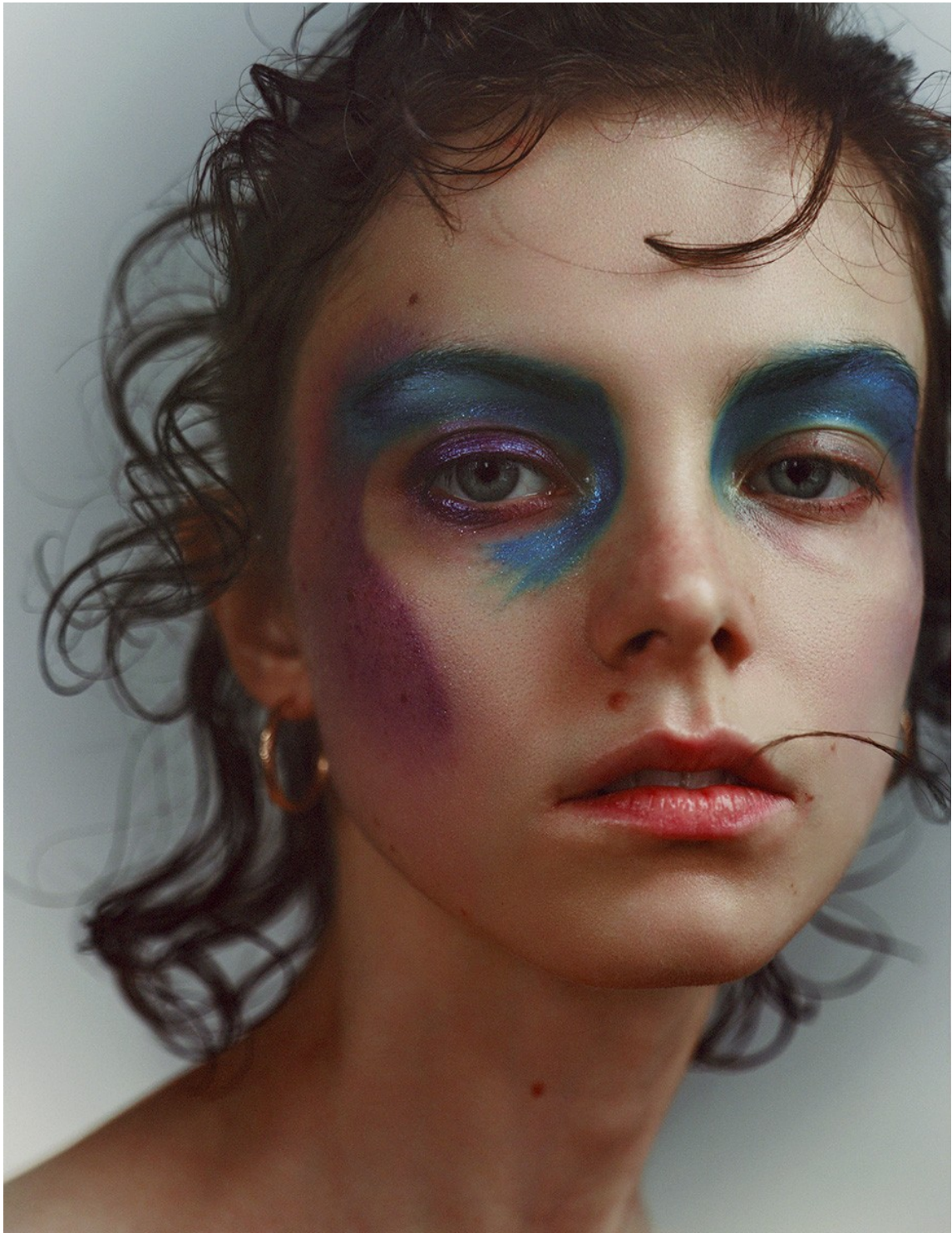
# Art Department



Misuzu Miyake

[www.art-dept.com](http://www.art-dept.com)

# Art Department



Misuzu Miyake

[www.art-dept.com](http://www.art-dept.com)

# Art Department



Misuzu Miyake

[www.art-dept.com](http://www.art-dept.com)

# Art Department



Misuzu Miyake

[www.art-dept.com](http://www.art-dept.com)

# Art Department



Misuzu Miyake

[www.art-dept.com](http://www.art-dept.com)

# Art Department



Misuzu Miyake

[www.art-dept.com](http://www.art-dept.com)

# Art Department



Misuzu Miyake

[www.art-dept.com](http://www.art-dept.com)



# Art Department



Misuzu Miyake

[www.art-dept.com](http://www.art-dept.com)

# Art Department



Misuzu Miyake

[www.art-dept.com](http://www.art-dept.com)

# Art Department



Misuzu Miyake

[www.art-dept.com](http://www.art-dept.com)

# Art Department



Misuzu Miyake

[www.art-dept.com](http://www.art-dept.com)

# Art Department



Misuzu Miyake

[www.art-dept.com](http://www.art-dept.com)

# Art Department



Misuzu Miyake

[www.art-dept.com](http://www.art-dept.com)

# Art Department



Misuzu Miyake

[www.art-dept.com](http://www.art-dept.com)

# Art Department



Misuzu Miyake

[www.art-dept.com](http://www.art-dept.com)



# Art Department



Misuzu Miyake

[www.art-dept.com](http://www.art-dept.com)

# Art Department



Misuzu Miyake

[www.art-dept.com](http://www.art-dept.com)

# Art Department



Misuzu Miyake

[www.art-dept.com](http://www.art-dept.com)

# Art Department



Misuzu Miyake

[www.art-dept.com](http://www.art-dept.com)

# Art Department



Misuzu Miyake

[www.art-dept.com](http://www.art-dept.com)

# Art Department



Misuzu Miyake

[www.art-dept.com](http://www.art-dept.com)

# Art Department



Misuzu Miyake

[www.art-dept.com](http://www.art-dept.com)

# Art Department



Misuzu Miyake

[www.art-dept.com](http://www.art-dept.com)



# Art Department



Misuzu Miyake

[www.art-dept.com](http://www.art-dept.com)

# Art Department



Misuzu Miyake

[www.art-dept.com](http://www.art-dept.com)

# Art Department



Misuzu Miyake

[www.art-dept.com](http://www.art-dept.com)

# Art Department



Misuzu Miyake

[www.art-dept.com](http://www.art-dept.com)

# Art Department



Misuzu Miyake

[www.art-dept.com](http://www.art-dept.com)

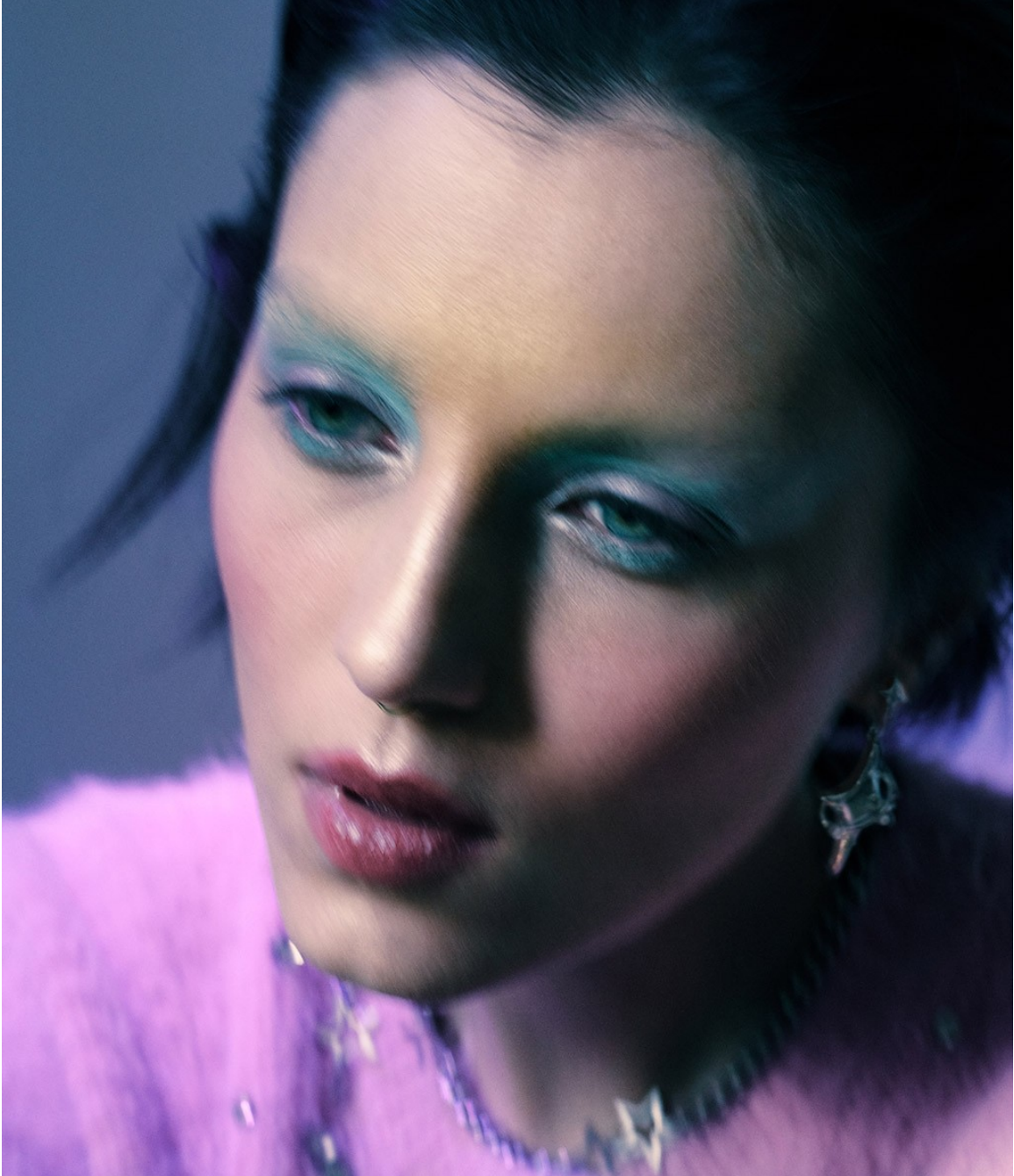
# Art Department



Misuzu Miyake

[www.art-dept.com](http://www.art-dept.com)

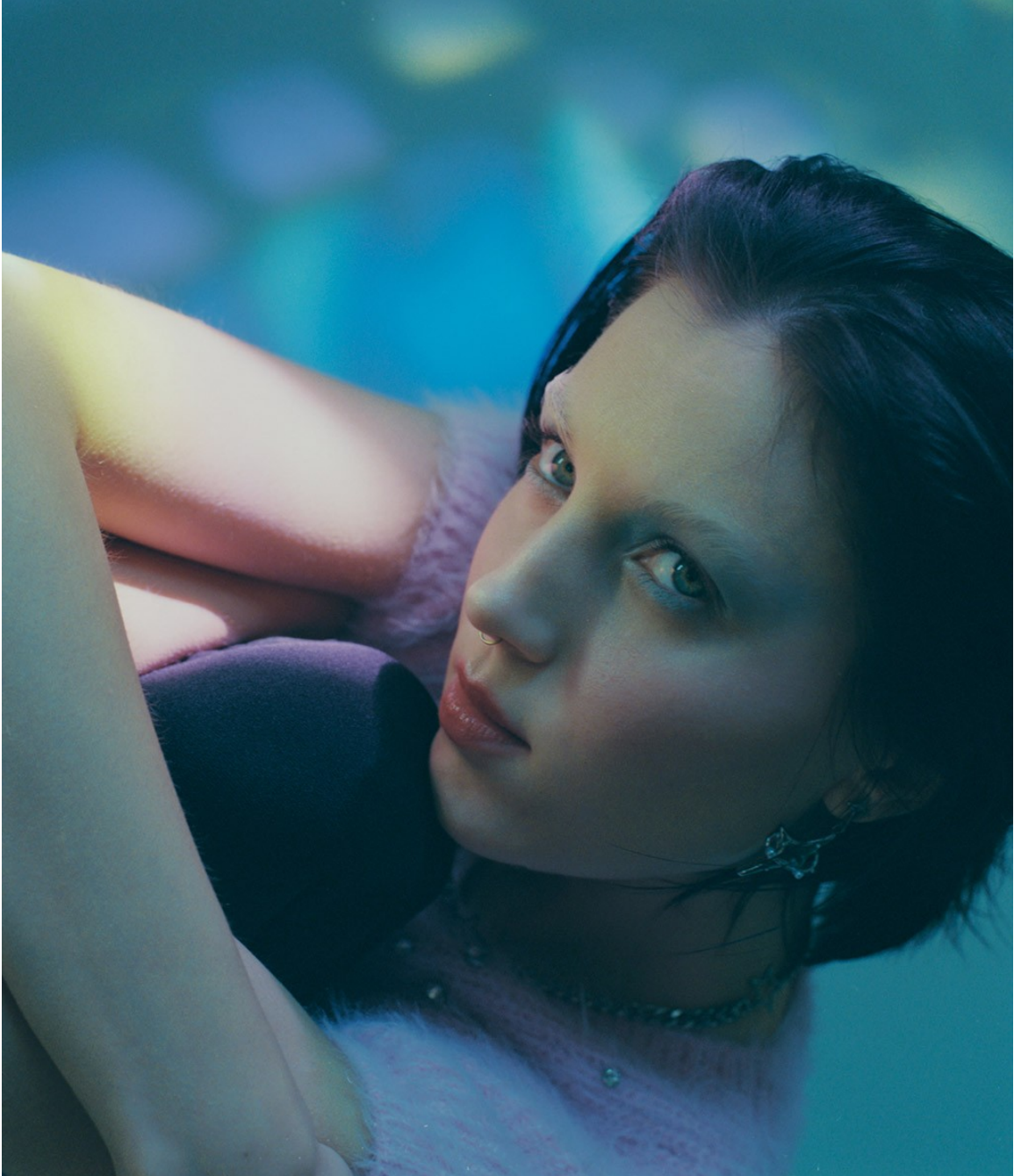
# Art Department



Misuzu Miyake

[www.art-dept.com](http://www.art-dept.com)

# Art Department



Misuzu Miyake

[www.art-dept.com](http://www.art-dept.com)



# Art Department



Misuzu Miyake

[www.art-dept.com](http://www.art-dept.com)

# Art Department



Misuzu Miyake

[www.art-dept.com](http://www.art-dept.com)

# Art Department



Misuzu Miyake

[www.art-dept.com](http://www.art-dept.com)

# Art Department



Misuzu Miyake

[www.art-dept.com](http://www.art-dept.com)

# Art Department



Misuzu Miyake

[www.art-dept.com](http://www.art-dept.com)

# Art Department



Misuzu Miyake

[www.art-dept.com](http://www.art-dept.com)

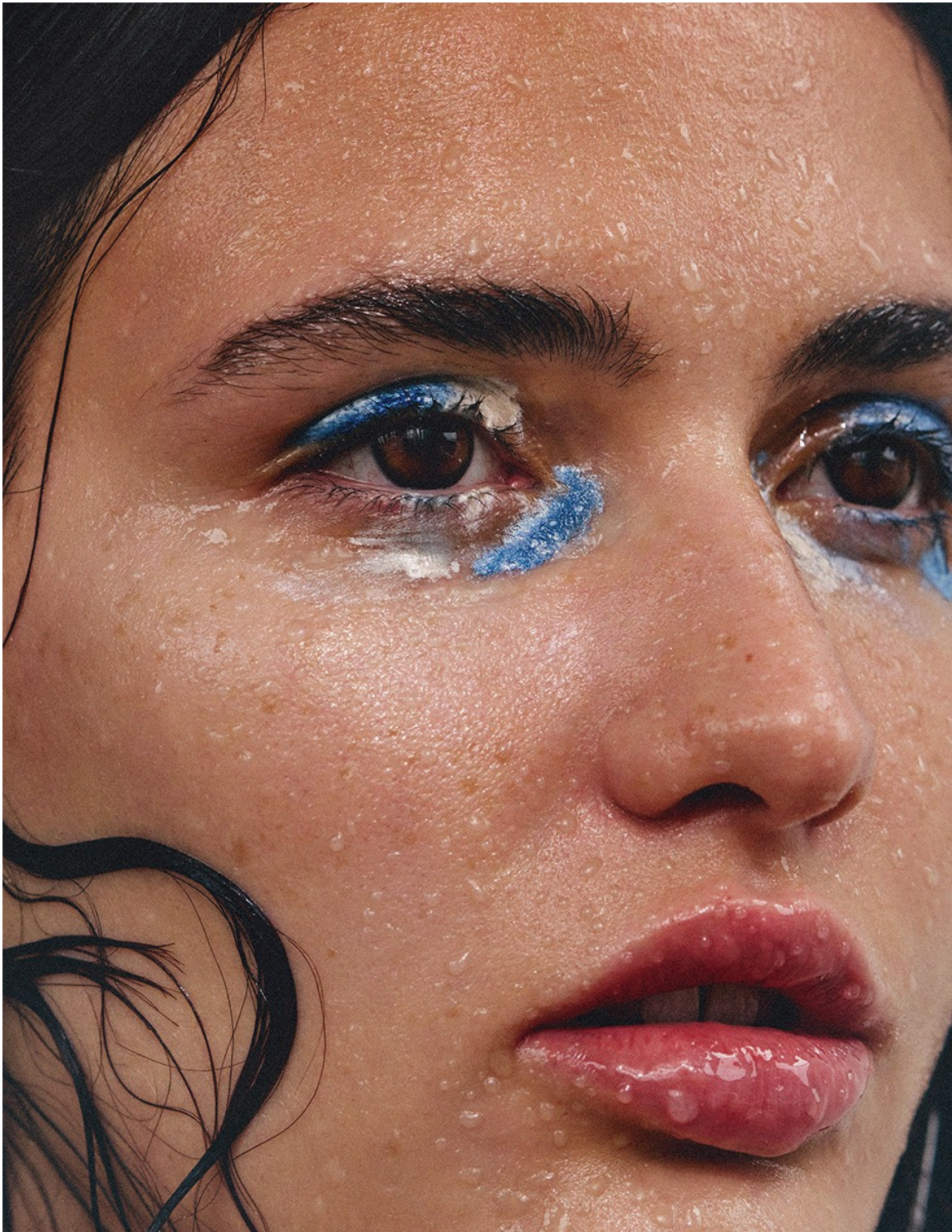
# Art Department



Misuzu Miyake

[www.art-dept.com](http://www.art-dept.com)

# Art Department



Misuzu Miyake

[www.art-dept.com](http://www.art-dept.com)



# Art Department



Misuzu Miyake

[www.art-dept.com](http://www.art-dept.com)

# Art Department



Misuzu Miyake

[www.art-dept.com](http://www.art-dept.com)

# Art Department



Misuzu Miyake

[www.art-dept.com](http://www.art-dept.com)

# Art Department

## *Frost yourself*

Denne måneden er all about parties, og vi er ikke vonde å be. I serien FROSTING ON THE CAKE får vi masse inspirasjon til festantrekk og glitrende tilbehør, kombinert med flere nyanser av nude sminke og en sterkt definert cat eye – en stor trend denne sesongen.

La deg også inspirere av motehusene Dior og Louis Vuitton sine makeup- og hår-looks, og notér deg våre sju life-savers på side 116 før alt braker løs.

ELLE *Skjønnhet*

## Misuzu Miyake

[www.art-dept.com](http://www.art-dept.com)

# Art Department



Misuzu Miyake

[www.art-dept.com](http://www.art-dept.com)

# Art Department



Misuzu Miyake

[www.art-dept.com](http://www.art-dept.com)

# Art Department



Misuzu Miyake

[www.art-dept.com](http://www.art-dept.com)

# Art Department



Misuzu Miyake

[www.art-dept.com](http://www.art-dept.com)



# Art Department



Misuzu Miyake

[www.art-dept.com](http://www.art-dept.com)

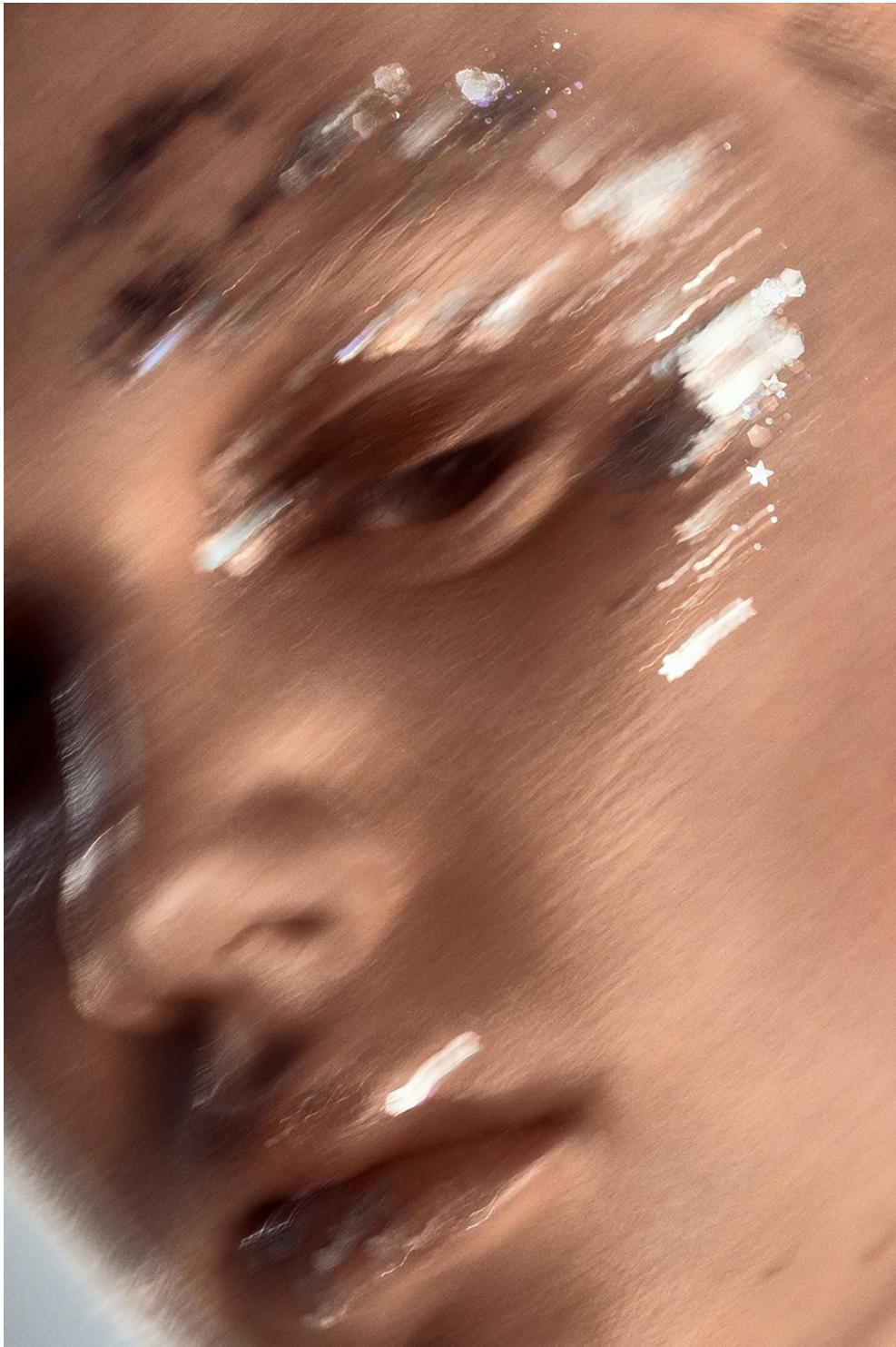
# Art Department



Misuzu Miyake

[www.art-dept.com](http://www.art-dept.com)

# Art Department



Misuzu Miyake

[www.art-dept.com](http://www.art-dept.com)

# Art Department



Misuzu Miyake

[www.art-dept.com](http://www.art-dept.com)

# Art Department



Misuzu Miyake

[www.art-dept.com](http://www.art-dept.com)

# Art Department



Misuzu Miyake

[www.art-dept.com](http://www.art-dept.com)

# Art Department



Misuzu Miyake

[www.art-dept.com](http://www.art-dept.com)

# Art Department



Misuzu Miyake

[www.art-dept.com](http://www.art-dept.com)



# Art Department



Misuzu Miyake

[www.art-dept.com](http://www.art-dept.com)

# Art Department



Misuzu Miyake

[www.art-dept.com](http://www.art-dept.com)

# Art Department



Misuzu Miyake

[www.art-dept.com](http://www.art-dept.com)

# Art Department



Misuzu Miyake

[www.art-dept.com](http://www.art-dept.com)

# Art Department



Misuzu Miyake

[www.art-dept.com](http://www.art-dept.com)

# Art Department



Misuzu Miyake

[www.art-dept.com](http://www.art-dept.com)

# Art Department



Misuzu Miyake

[www.art-dept.com](http://www.art-dept.com)

# Art Department



Misuzu Miyake

[www.art-dept.com](http://www.art-dept.com)



# Art Department



Misuzu Miyake

[www.art-dept.com](http://www.art-dept.com)

# Art Department



Misuzu Miyake

[www.art-dept.com](http://www.art-dept.com)

# Art Department



Misuzu Miyake

[www.art-dept.com](http://www.art-dept.com)

# Art Department



Misuzu Miyake

[www.art-dept.com](http://www.art-dept.com)

# Art Department



Misuzu Miyake

[www.art-dept.com](http://www.art-dept.com)

# Art Department



Misuzu Miyake

[www.art-dept.com](http://www.art-dept.com)

# Art Department



Misuzu Miyake

[www.art-dept.com](http://www.art-dept.com)

# Art Department



Misuzu Miyake

[www.art-dept.com](http://www.art-dept.com)



# Art Department



Misuzu Miyake

[www.art-dept.com](http://www.art-dept.com)

# Art Department



Misuzu Miyake

[www.art-dept.com](http://www.art-dept.com)

# Art Department



Misuzu Miyake

[www.art-dept.com](http://www.art-dept.com)

# Art Department



Harper's  
**BAZAAR**  
BEAUTY

**DODIRTOPLINE**

Zlatni tonovi na očima i nijanse breskve na usnama, suptilni su obrisi leta na osunčanoj koži

*Fotografije: Monika Lis      Šminkerka: Misuzu Miyake*

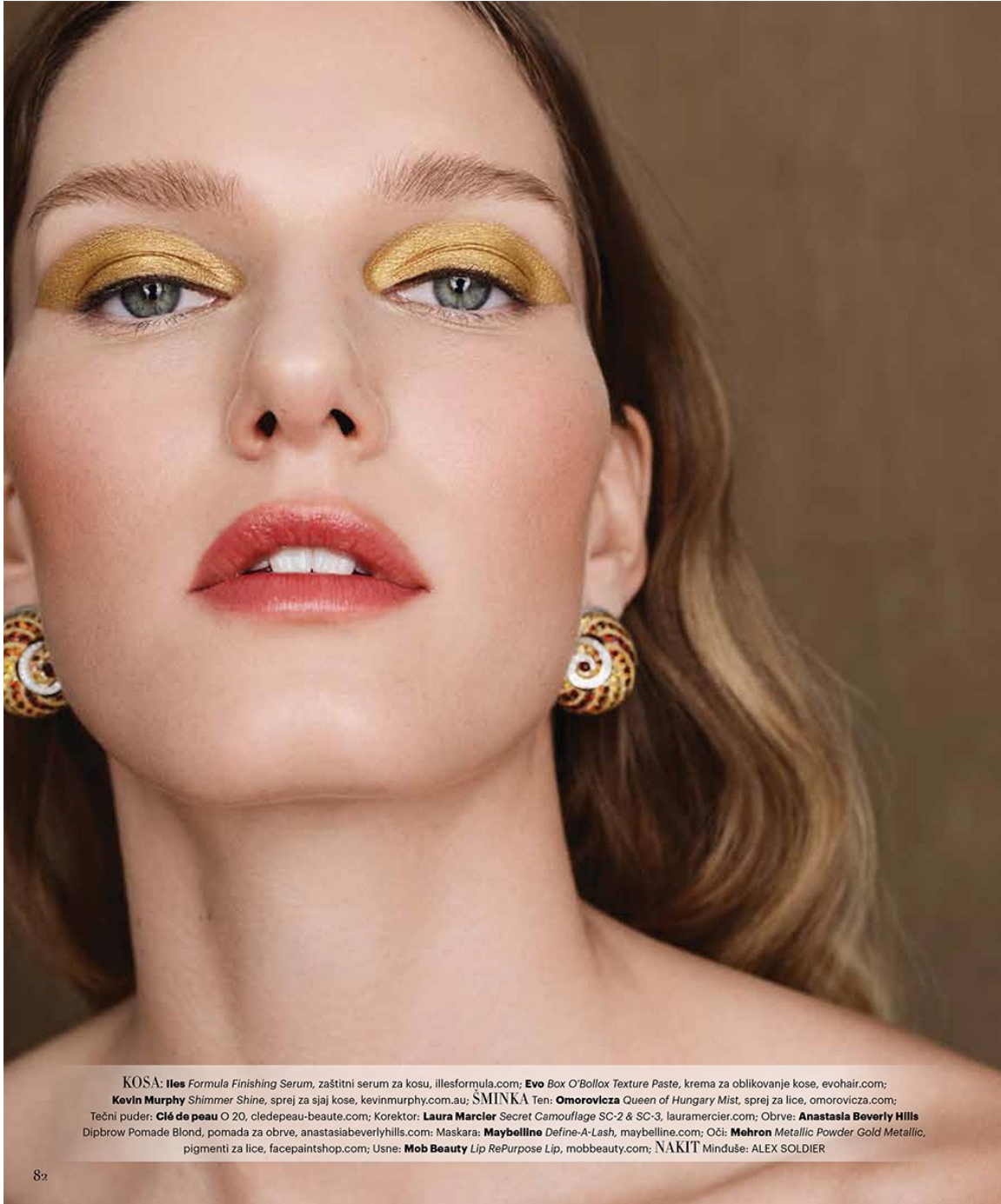
KOSA **Bumble Bumble** Thickening Spray, sprej za volumen kose, [bumbleandbumble.com](http://bumbleandbumble.com); **Kérastase** Volume Mousse, pena za volumen, 3.000 dinara; **L'Oréal** Elnett Hairspray, lak za kosu, 2.100 dinara; **Evo** Water Killer Dry Shampoo, suvi šampon, [evohair.com](http://evohair.com); **ŠMINKA** Ten; **Omorovicza** Queen of Hungary Mist, sprej za lice, [omorovicza.com](http://omorovicza.com); Tečni puder: **Clé de peau** O 20, [cledepeau-beaute.com](http://cledepeau-beaute.com); Korektor: **Laura Mercier** Secret Camouflage SC-2 & SC-3, [lauramercier.com](http://lauramercier.com); Obrve: **Anastasia Beverly Hills** Dipbrow Pomade Blond, pomada za obrve, [anastasiabeverlyhills.com](http://anastasiabeverlyhills.com); Maskara: **Maybelline** Define-A-Lash, [maybelline.com](http://maybelline.com); Usne i oči: **Elizabeth Arden** Eight Hour Cream, višenamenska krema za kožu, [elizabetharden.com](http://elizabetharden.com); **NAKIT** Minduše: DJULA

81

## Misuzu Miyake

[www.art-dept.com](http://www.art-dept.com)

# Art Department



KOSA: **Illes Formula Finishing Serum**, zaštitni serum za kosu, illesformula.com; **Evo Box O'Bollox Texture Paste**, krema za oblikovanje kose, evohair.com;  
**Kevin Murphy Shimmer Shine**, sprej za sijaj kose, kevinmurphy.com.au; ŠMINKA Ten: **Omorovicza Queen of Hungary Mist**, sprej za lice, omorovicza.com;  
Tečni puder: **Clé de peau O 20**, cledepeau-beaute.com; Korektor: **Laura Mercier Secret Camouflage SC-2 & SC-3**, lauramercier.com; Obrve: **Anastasia Beverly Hills**  
Dipbrow Pomade Blond, pomada za obrve, anastasiabeverlyhills.com; Maskara: **Maybelline Define-A-Lash**, maybelline.com; Oči: **Mohron Metallic Powder Gold Metallic**,  
pigmenti za lice, facepaintshop.com; Usne: **Mob Beauty Lip RePurpose Lip**, mobbeauty.com; NAKIT: Minduše: ALEX SOLDIER

82

## Misuzu Miyake

[www.art-dept.com](http://www.art-dept.com)

# Art Department



Misuzu Miyake

[www.art-dept.com](http://www.art-dept.com)

# Art Department



Misuzu Miyake

[www.art-dept.com](http://www.art-dept.com)

# Art Department



Misuzu Miyake

[www.art-dept.com](http://www.art-dept.com)



# Art Department



Lepota **BAZAAR**

**KOSA** *iles Formula Finishing Serum*, zaštitni serum za kosu, [ilesformula.com](http://ilesformula.com); **Kevin Murphy** Bedroom Hair, sprej za teksturu kose, [kevinmurphy.com.au](http://kevinmurphy.com.au);  
**SMINKA** Ten: **Omorovicza** Queen of Hungary Mist, sprej za lice, [omorovicza.com](http://omorovicza.com); Tečni puder: **Clé de Peau** O 20, [cledepeau-beaute.com](http://cledepeau-beaute.com);  
Korektor: **Laura Mercier** Secret Camouflage SC-2 & SC-3, [lauramercier.com](http://lauramercier.com); Obrve: **Anastasia Beverly Hills** Dipbrow Pomade Blond, pomada za obrve, [anastasiabeverlyhills.com](http://anastasiabeverlyhills.com); Maskara: **Maybelline** Define-A-Lash, [maybelline.com](http://maybelline.com); Oči: **M.A.C. Cosmetics** Reflect Antique Gold & Kitshmas Eyeliner; **Chanel** Stylist Eyeliner, [chanel.com](http://chanel.com); Usne: **M.A.C. Cosmetics** lip pencil Whirl, olovka za usne, [maccosmetics.com](http://maccosmetics.com).

## Misuzu Miyake

[www.art-dept.com](http://www.art-dept.com)

# Art Department



Misuzu Miyake

[www.art-dept.com](http://www.art-dept.com)

# Art Department



Fotografirala: Konika Lis, Model: Marique Schimmel za Fusion Models NYC, Šminkarica: Misuzu Miyake, Frizerka: Destiny Venice, Stilizirinja: Ise White, Obrada fotografija: Anastasia Vakhtova

NA OVOJ STRANI: KOSA: **Illes Formula** Finishing Serum, zaštitni serum za kosu, illesformula.com; **Kevin Murphy** Bedroom Hair, sprej za teksturu kose, kevinmurphy.com.au; ŠMINKA Ten: **Omorovicza** Queen of Hungary Mist, sprej za lice, omorovicza.com; Tečni puder: **Clé de Peau** O 20, cledepeau-beaute.com; Korektor: **Laura Mercier** Secret Camouflage SC-2 & SC-3, lauramercier.com; Obrve: **Anastasia Beverly Hills** Dipbrow Pomade Blond, pomada za obrve, anastasiabeverlyhills.com; Maskara: **Maybelline** Define-A-Lash, maybelline.com; Ajlajner: **Chanel** Stylist Eye Liner Pen Noir, chanel.com; Usne: **Mob Beauty** Lip RePurpose Lip, mobbeauty.com; **NAKIT** Minduše: LE VIAN

83

## Misuzu Miyake

[www.art-dept.com](http://www.art-dept.com)

# Art Department



Misuzu Miyake

[www.art-dept.com](http://www.art-dept.com)

# Art Department



Misuzu Miyake

[www.art-dept.com](http://www.art-dept.com)

# Art Department



Misuzu Miyake

[www.art-dept.com](http://www.art-dept.com)

# Art Department



Misuzu Miyake

[www.art-dept.com](http://www.art-dept.com)

# Art Department



Misuzu Miyake

[www.art-dept.com](http://www.art-dept.com)



# Art Department



Misuzu Miyake

[www.art-dept.com](http://www.art-dept.com)

# Art Department



Misuzu Miyake

[www.art-dept.com](http://www.art-dept.com)

# Art Department



Misuzu Miyake

[www.art-dept.com](http://www.art-dept.com)

# Art Department



Misuzu Miyake

[www.art-dept.com](http://www.art-dept.com)

# Art Department



Misuzu Miyake

[www.art-dept.com](http://www.art-dept.com)

# Art Department



Misuzu Miyake

[www.art-dept.com](http://www.art-dept.com)

# Art Department



Misuzu Miyake

[www.art-dept.com](http://www.art-dept.com)

# Art Department



Misuzu Miyake

[www.art-dept.com](http://www.art-dept.com)



# Art Department



Misuzu Miyake

[www.art-dept.com](http://www.art-dept.com)

# Art Department



Misuzu Miyake

[www.art-dept.com](http://www.art-dept.com)

# Art Department



Misuzu Miyake

[www.art-dept.com](http://www.art-dept.com)

# Art Department



Misuzu Miyake

[www.art-dept.com](http://www.art-dept.com)

# Art Department



Misuzu Miyake

[www.art-dept.com](http://www.art-dept.com)

# Art Department



**I SAW RED**

PHOTOGRAPHER: HOLLY PARKER @HOLLYPARKERPHOTO  
MODEL: DELFINA MORBELLI @DELFINAMORBELLI  
AT INDUSTRY NEW YORK @THEINDUSTRYNY  
WARDROBE STYLIST: JESSIE AJLUNI @JESSIEAJLUNISTYLING  
MAKEUP: MISUZU MIYAKE @MISUZUMIYAKI  
AT CREATIVE MANAGEMENT @CREATIVE.MANAGEMENT  
HAIR: DAMIAN MONZILLO @DAMIANMONZILLO  
AT CREATIVE MANAGEMENT @CREATIVE.MANAGEMENT  
LIGHT TECH: FACTORY NYC  
PHOTO ASSISTANTS: BEN KASUN AND MAAZ KHAN  
RETOUCHER: ANNA ISMAGILOVA  
STUDIO: PIER 59 STUDIOS NYC

Misuzu Miyake

[www.art-dept.com](http://www.art-dept.com)

# Art Department



Misuzu Miyake

[www.art-dept.com](http://www.art-dept.com)

# Art Department



Misuzu Miyake

[www.art-dept.com](http://www.art-dept.com)



# Art Department



Misuzu Miyake

[www.art-dept.com](http://www.art-dept.com)

# Art Department



Misuzu Miyake

[www.art-dept.com](http://www.art-dept.com)

# Art Department



Misuzu Miyake

[www.art-dept.com](http://www.art-dept.com)

# Art Department



Misuzu Miyake

[www.art-dept.com](http://www.art-dept.com)

# Art Department

LUCY'S 174



Misuzu Miyake

[www.art-dept.com](http://www.art-dept.com)

# Art Department



Misuzu Miyake

[www.art-dept.com](http://www.art-dept.com)

# Art Department



Misuzu Miyake

[www.art-dept.com](http://www.art-dept.com)

# Art Department



Misuzu Miyake

[www.art-dept.com](http://www.art-dept.com)



# Art Department



Misuzu Miyake

[www.art-dept.com](http://www.art-dept.com)

# Art Department



Misuzu Miyake

[www.art-dept.com](http://www.art-dept.com)

# Art Department



Misuzu Miyake

[www.art-dept.com](http://www.art-dept.com)

# Art Department



Misuzu Miyake

[www.art-dept.com](http://www.art-dept.com)

# Art Department



Misuzu Miyake

[www.art-dept.com](http://www.art-dept.com)

# Art Department



Misuzu Miyake

[www.art-dept.com](http://www.art-dept.com)

# Art Department



Misuzu Miyake

[www.art-dept.com](http://www.art-dept.com)

# Art Department



Misuzu Miyake

[www.art-dept.com](http://www.art-dept.com)



# Art Department



Misuzu Miyake

[www.art-dept.com](http://www.art-dept.com)

# Art Department



Misuzu Miyake

[www.art-dept.com](http://www.art-dept.com)

# Art Department



Misuzu Miyake

[www.art-dept.com](http://www.art-dept.com)

# Art Department



Misuzu Miyake

[www.art-dept.com](http://www.art-dept.com)

# Art Department



Misuzu Miyake

[www.art-dept.com](http://www.art-dept.com)

# Art Department



Misuzu Miyake

[www.art-dept.com](http://www.art-dept.com)

# Art Department



Misuzu Miyake

[www.art-dept.com](http://www.art-dept.com)

# Art Department



Misuzu Miyake

[www.art-dept.com](http://www.art-dept.com)



# Art Department



Misuzu Miyake

[www.art-dept.com](http://www.art-dept.com)

# Art Department



Misuzu Miyake

[www.art-dept.com](http://www.art-dept.com)

# Art Department



Misuzu Miyake

[www.art-dept.com](http://www.art-dept.com)

# Art Department



Misuzu Miyake

[www.art-dept.com](http://www.art-dept.com)

# Art Department



Misuzu Miyake

[www.art-dept.com](http://www.art-dept.com)

# Art Department



Misuzu Miyake

[www.art-dept.com](http://www.art-dept.com)

# Art Department



Misuzu Miyake

[www.art-dept.com](http://www.art-dept.com)

# Art Department



Misuzu Miyake

[www.art-dept.com](http://www.art-dept.com)



# Art Department



Misuzu Miyake

[www.art-dept.com](http://www.art-dept.com)

# Art Department

## SHOWSTOPPER

Trade the 2020 party mask for these next-level gold-flecked eyes. First, apply Lancôme Ombre Hypnôse Stylo Shadow Stick in Monogold (\$25, lancome-usa.com) on top of and underneath lids. Then smooth Elizabeth Arden Eight Hour Cream (\$24, elizabetharden.com) onto lids and cheekbones. "This balm acts like a glue to hold the gold foil on the skin," says Misuzu Miyake, the makeup artist who created the looks in this story. Now use tweezers to artfully scatter Kryolan Metallic Flakes (\$11, us.kryolan.com).

*eyes that*  
**POP**

OUR PLAN FOR PARTY  
MAKEUP: JUST DO  
THE EYES. WHEN THEY  
LOOK THIS FIERCE,  
THEY'RE ALL YOU NEED TO  
MAKE A STATEMENT.

by KATE SANDOVAL BOX  
photographs by KOUROSH SOTOODEH

100

## Misuzu Miyake

[www.art-dept.com](http://www.art-dept.com)

# Art Department



## MODERN MYSTIC

The intrigue is in the details: Miyake stacked two different blue shadows to create depth and staying power; BareMinerals Loose Mineral Eyecolor in Chameleon (\$15, [bareminerals.com](http://bareminerals.com)) and MAC Cosmetics Glitter in Teal Hologram (\$22, [maccosmetics.com](http://maccosmetics.com)). Then she lined up crystals (four medium, three small)—find face gems on Amazon—along lower lashes.

## Misuzu Miyake

[www.art-dept.com](http://www.art-dept.com)

# Art Department



## THE RED QUEEN

A good philosophy for party clothes and red eye shadow: the bolder the better. Sheer washes of red are known for causing a sickly effect. This strong crimson drawn with a precise flick has the opposite effect. Wet your liner brush before dipping it in Melt Cosmetics shadow in Love Sick (\$17, [meltcosmetics.com](http://meltcosmetics.com)).

## Misuzu Miyake

[www.art-dept.com](http://www.art-dept.com)

# Art Department

## COUPLE GOALS

Pairing up warm copper and cool purple shadows creates a can't-look-away contrast. Press MAC Cosmetics Pigment in Copper (\$22, [maccosmetics.com](http://maccosmetics.com)) into the inner corners of the eyes and along the lower lashes, then add a purple cream shadow (like Flower Beauty Pop Fanatic Eye Pigment in Fizz, \$9, [flowerbeauty.com](http://flowerbeauty.com)) on most of the upper lid. "Blend the two with a fluffy brush, but only a bit. The casualness makes it look like they melt into each other," Miyake says.

Brixton Piper Fedora (\$75, [brixton.com](http://brixton.com)). Opposite page: Sally LaPointe Oxblood alpaca turtleneck (\$1,550, [sallylapointe.com](http://sallylapointe.com)).



## Misuzu Miyake

[www.art-dept.com](http://www.art-dept.com)

# Art Department



Misuzu Miyake

[www.art-dept.com](http://www.art-dept.com)

# Art Department



## THE OUTLINERS

Making your black eyeliner this distinctive requires a tiny, short-bristled makeup brush, black cream eyeliner (like Chanel Calligraphie de Chanel Longwear Intense Cream Eyeliner in Hyperblack, \$35, [chanel.com](http://chanel.com)), and a steady hand. Swirl the brush in your liner, then sketch a half circle around each eye, staying above your crease.

Ramy Brook Dahlia jacket (\$595, [ramybrook.com](http://ramybrook.com)).  
Opposite page: Ganni Sequin Mesh top (\$450, [ganni.com](http://ganni.com)).

## Misuzu Miyake

[www.art-dept.com](http://www.art-dept.com)

# Art Department



Misuzu Miyake

[www.art-dept.com](http://www.art-dept.com)



# Art Department



Misuzu Miyake

[www.art-dept.com](http://www.art-dept.com)

# Art Department



Misuzu Miyake

[www.art-dept.com](http://www.art-dept.com)

# Art Department



Misuzu Miyake

[www.art-dept.com](http://www.art-dept.com)

# Art Department



Misuzu Miyake

[www.art-dept.com](http://www.art-dept.com)

# Art Department



Misuzu Miyake

[www.art-dept.com](http://www.art-dept.com)

# Art Department



Misuzu Miyake

[www.art-dept.com](http://www.art-dept.com)

# Art Department



Misuzu Miyake

[www.art-dept.com](http://www.art-dept.com)

# Art Department



Misuzu Miyake

[www.art-dept.com](http://www.art-dept.com)



# Art Department



Shirt Vintage SONIA RYKIEL at ohr.nyc  
Earrings customized st ohr.nyc

## Misuzu Miyake

[www.art-dept.com](http://www.art-dept.com)

# Art Department



Top Laurence & Chico

Photographer TAKAHIRO OGAWA at Factory Downtown

Stylist NADIA RATH at Holly Corbett Represents

Hair Stylist KABUTO OKUZAWA

Makeup Artist MISUZU MIYAKE using M.A.C Cosmetics at Art Department

Models ALICIA HOLTZ, ANA CRISTINA, ALECIA RODRIGUEZ, BRUNA

TENORIO, LUZ PAVON at New York Model Management

## Misuzu Miyake

[www.art-dept.com](http://www.art-dept.com)

# Art Department



Misuzu Miyake

[www.art-dept.com](http://www.art-dept.com)

# Art Department



Misuzu Miyake

[www.art-dept.com](http://www.art-dept.com)

# Art Department



Misuzu Miyake

[www.art-dept.com](http://www.art-dept.com)

# Art Department



Misuzu Miyake

[www.art-dept.com](http://www.art-dept.com)

# Art Department



Misuzu Miyake

[www.art-dept.com](http://www.art-dept.com)

# Art Department



Misuzu Miyake

[www.art-dept.com](http://www.art-dept.com)



# Art Department



Misuzu Miyake

[www.art-dept.com](http://www.art-dept.com)

# Art Department



Misuzu Miyake

[www.art-dept.com](http://www.art-dept.com)

# Art Department



Misuzu Miyake

[www.art-dept.com](http://www.art-dept.com)

# Art Department



Misuzu Miyake

[www.art-dept.com](http://www.art-dept.com)

# Art Department



Misuzu Miyake

[www.art-dept.com](http://www.art-dept.com)

# Art Department



Misuzu Miyake

[www.art-dept.com](http://www.art-dept.com)

# Art Department



Misuzu Miyake

[www.art-dept.com](http://www.art-dept.com)

# Art Department



Misuzu Miyake

[www.art-dept.com](http://www.art-dept.com)



# Art Department



Misuzu Miyake

[www.art-dept.com](http://www.art-dept.com)

# Art Department



Misuzu Miyake

[www.art-dept.com](http://www.art-dept.com)

# Art Department



Misuzu Miyake

[www.art-dept.com](http://www.art-dept.com)

# Art Department



Misuzu Miyake

[www.art-dept.com](http://www.art-dept.com)

# Art Department



Misuzu Miyake

[www.art-dept.com](http://www.art-dept.com)

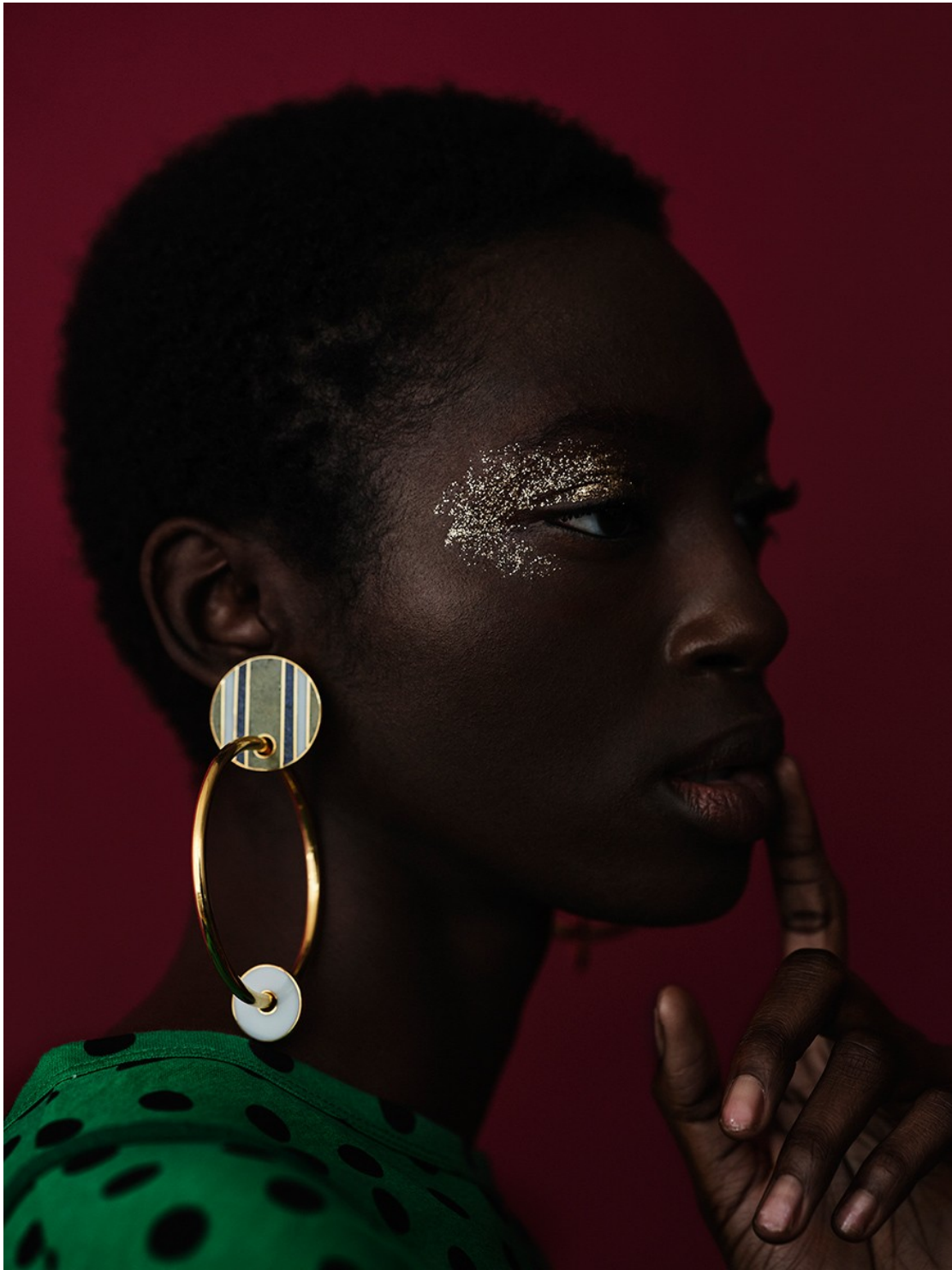
# Art Department



Misuzu Miyake

[www.art-dept.com](http://www.art-dept.com)

# Art Department



Misuzu Miyake

[www.art-dept.com](http://www.art-dept.com)

# Art Department



Misuzu Miyake

[www.art-dept.com](http://www.art-dept.com)



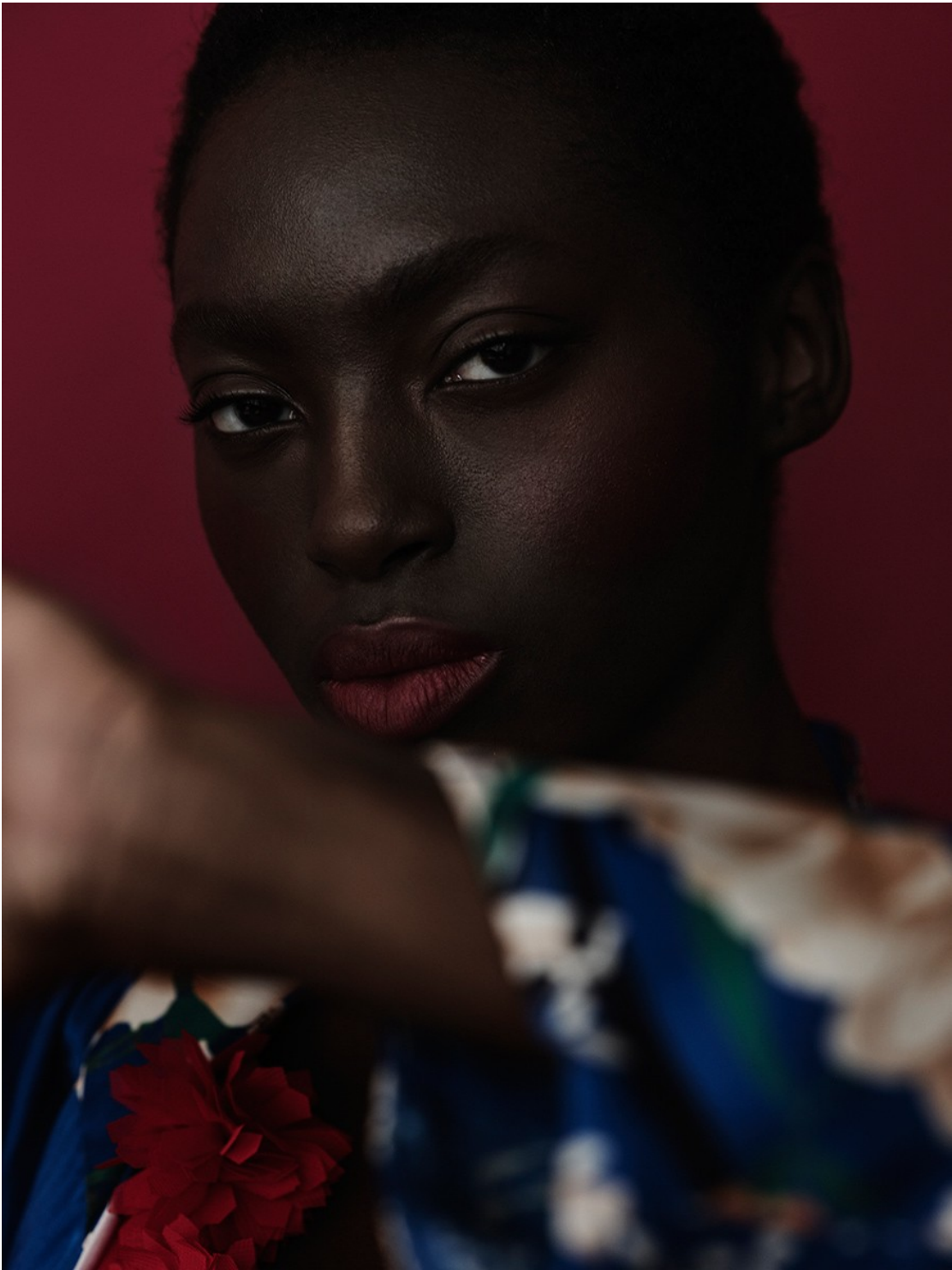
# Art Department



Misuzu Miyake

[www.art-dept.com](http://www.art-dept.com)

# Art Department



Misuzu Miyake

[www.art-dept.com](http://www.art-dept.com)

# Art Department



Misuzu Miyake

[www.art-dept.com](http://www.art-dept.com)

# Art Department



Misuzu Miyake

[www.art-dept.com](http://www.art-dept.com)

# Art Department



Misuzu Miyake

[www.art-dept.com](http://www.art-dept.com)

# Art Department



Misuzu Miyake

[www.art-dept.com](http://www.art-dept.com)

# Art Department



Misuzu Miyake

[www.art-dept.com](http://www.art-dept.com)

# Art Department



Misuzu Miyake

[www.art-dept.com](http://www.art-dept.com)



# Art Department



Misuzu Miyake

[www.art-dept.com](http://www.art-dept.com)

# Art Department



Misuzu Miyake

[www.art-dept.com](http://www.art-dept.com)

# Art Department



Misuzu Miyake

[www.art-dept.com](http://www.art-dept.com)

# Art Department



Misuzu Miyake

[www.art-dept.com](http://www.art-dept.com)

# Art Department



Misuzu Miyake

[www.art-dept.com](http://www.art-dept.com)

# Art Department



Misuzu Miyake

[www.art-dept.com](http://www.art-dept.com)

# Art Department



Misuzu Miyake

[www.art-dept.com](http://www.art-dept.com)

# Art Department



Misuzu Miyake

[www.art-dept.com](http://www.art-dept.com)



# Art Department



Misuzu Miyake

[www.art-dept.com](http://www.art-dept.com)

# Art Department



Misuzu Miyake

[www.art-dept.com](http://www.art-dept.com)

# Art Department



Misuzu Miyake

[www.art-dept.com](http://www.art-dept.com)

# Art Department



Misuzu Miyake

[www.art-dept.com](http://www.art-dept.com)

# Art Department



Misuzu Miyake

[www.art-dept.com](http://www.art-dept.com)

# Art Department



Misuzu Miyake

[www.art-dept.com](http://www.art-dept.com)

# Art Department



Misuzu Miyake

[www.art-dept.com](http://www.art-dept.com)

# Art Department



Misuzu Miyake

[www.art-dept.com](http://www.art-dept.com)



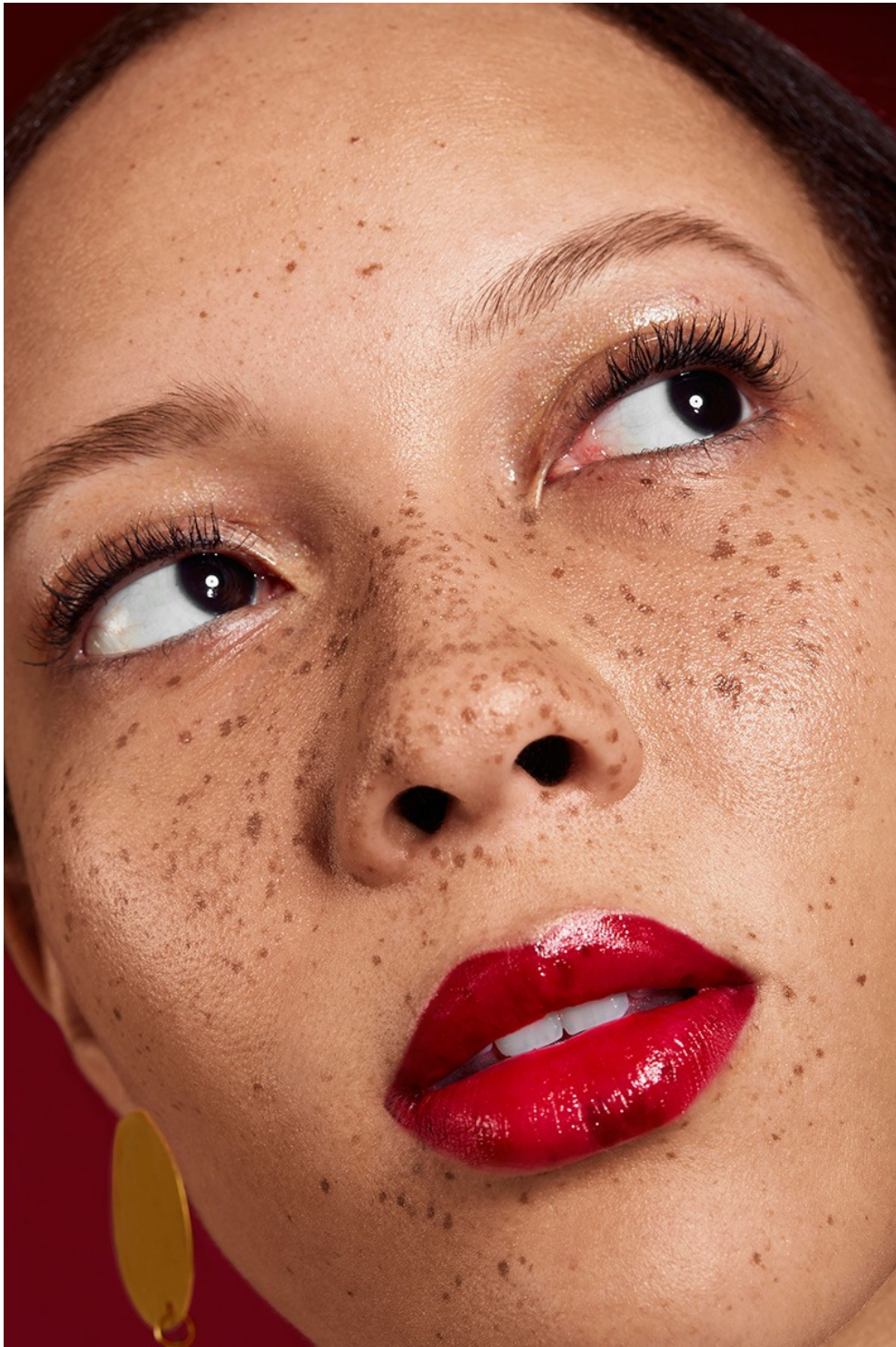
# Art Department



Misuzu Miyake

[www.art-dept.com](http://www.art-dept.com)

# Art Department



Misuzu Miyake

[www.art-dept.com](http://www.art-dept.com)

# Art Department



Misuzu Miyake

[www.art-dept.com](http://www.art-dept.com)

# Art Department



Misuzu Miyake

[www.art-dept.com](http://www.art-dept.com)

# Art Department



Misuzu Miyake

[www.art-dept.com](http://www.art-dept.com)

# Art Department



Misuzu Miyake

[www.art-dept.com](http://www.art-dept.com)

# Art Department



Misuzu Miyake

[www.art-dept.com](http://www.art-dept.com)

# Art Department

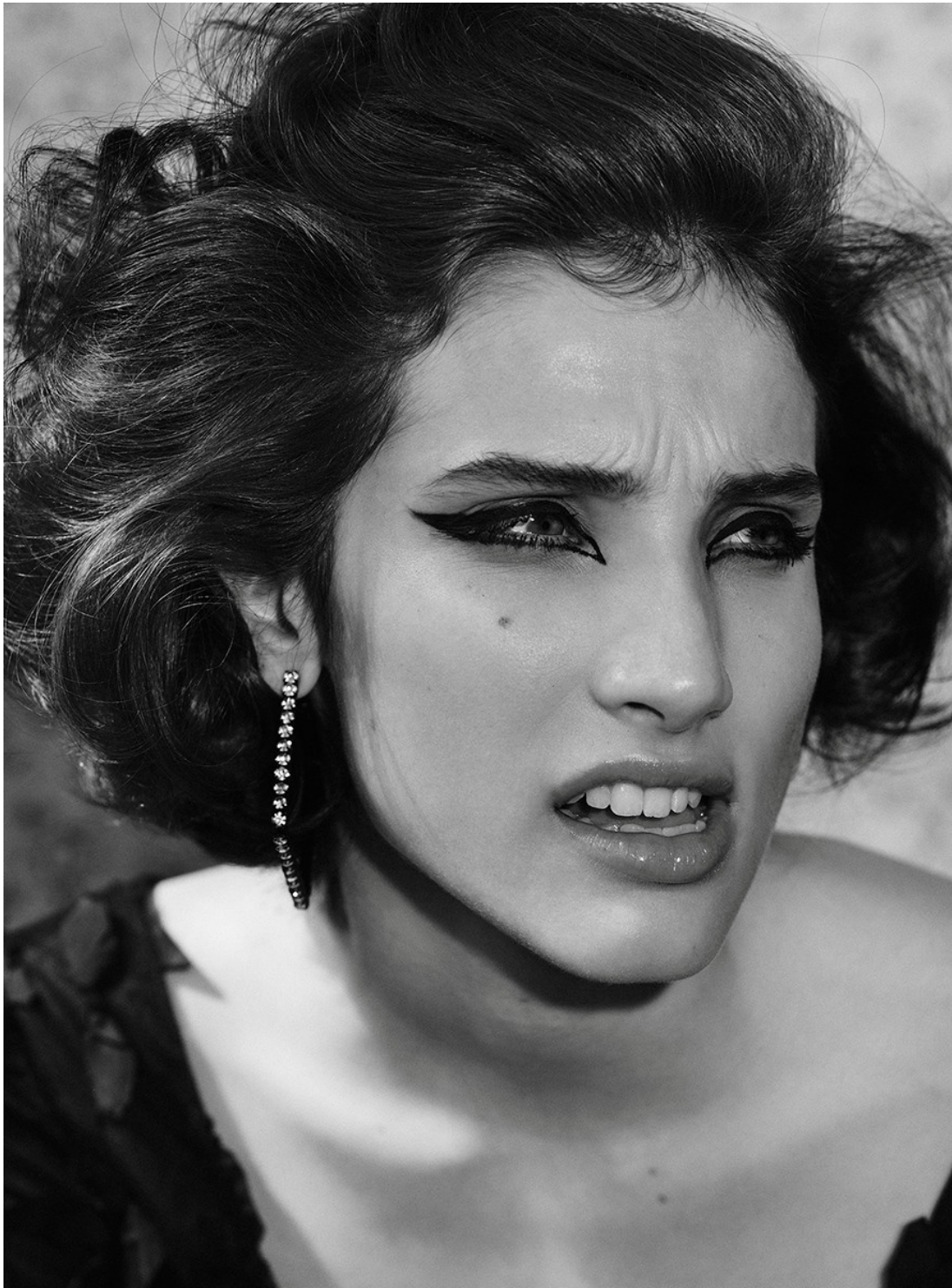


Misuzu Miyake

[www.art-dept.com](http://www.art-dept.com)



# Art Department



Misuzu Miyake

[www.art-dept.com](http://www.art-dept.com)

# Art Department



Misuzu Miyake

[www.art-dept.com](http://www.art-dept.com)

# Art Department



Misuzu Miyake

[www.art-dept.com](http://www.art-dept.com)

# Art Department



Misuzu Miyake

[www.art-dept.com](http://www.art-dept.com)

# Art Department



Misuzu Miyake

[www.art-dept.com](http://www.art-dept.com)

# Art Department



Misuzu Miyake

[www.art-dept.com](http://www.art-dept.com)

# Art Department



Misuzu Miyake

[www.art-dept.com](http://www.art-dept.com)

# Art Department



Misuzu Miyake

[www.art-dept.com](http://www.art-dept.com)



# Art Department



Misuzu Miyake

[www.art-dept.com](http://www.art-dept.com)

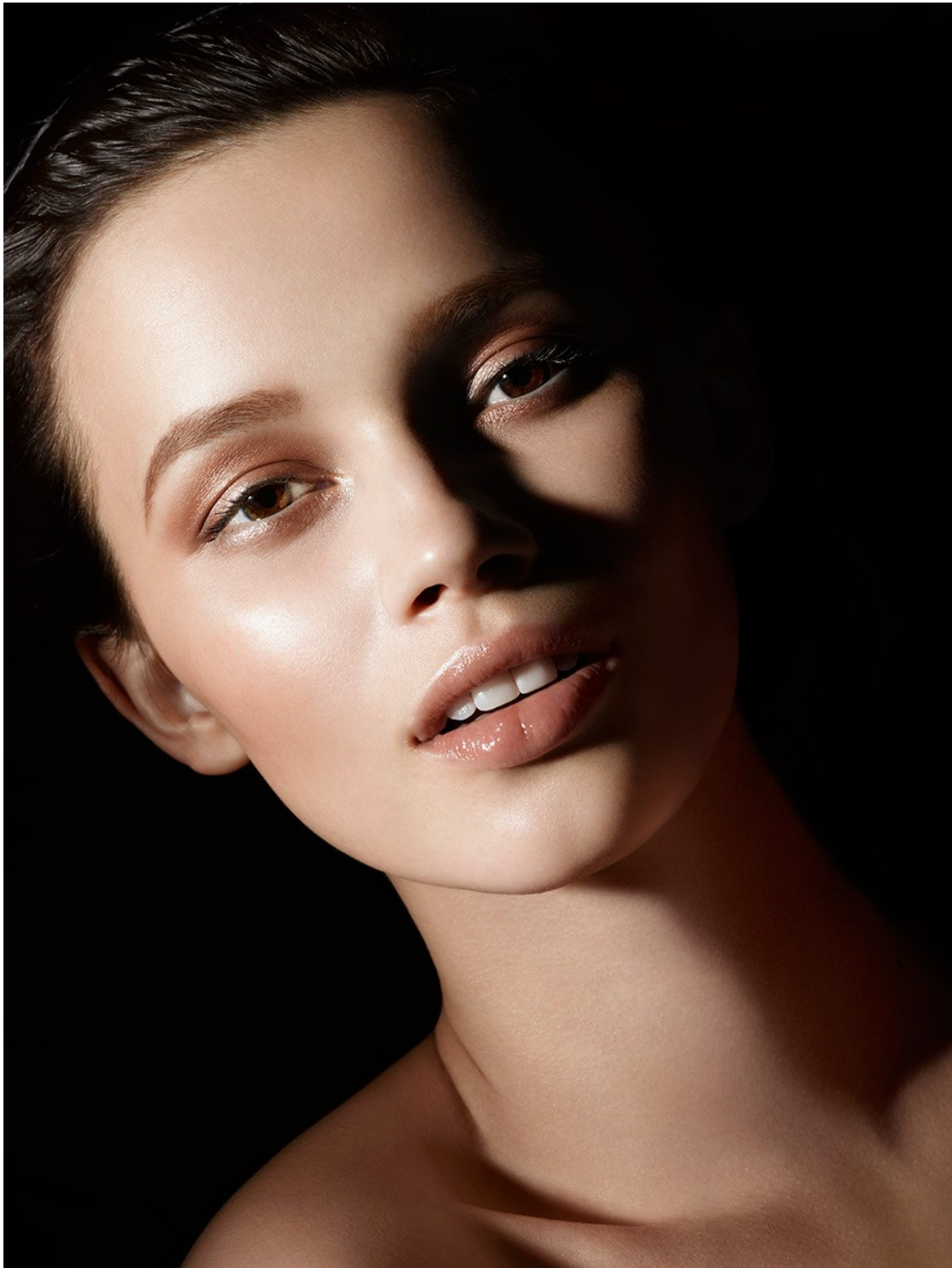
# Art Department



Misuzu Miyake

[www.art-dept.com](http://www.art-dept.com)

# Art Department



Misuzu Miyake

[www.art-dept.com](http://www.art-dept.com)

# Art Department



Misuzu Miyake

[www.art-dept.com](http://www.art-dept.com)

# Art Department



Misuzu Miyake

[www.art-dept.com](http://www.art-dept.com)

# Art Department



Misuzu Miyake

[www.art-dept.com](http://www.art-dept.com)

# Art Department



Misuzu Miyake

[www.art-dept.com](http://www.art-dept.com)

# Art Department



Face, Cé de Peau  
Foundation, Lips,  
Chanel Lip Balm,  
Eyes, Mehron metallic  
powder by Gold,  
M.A.C black eye pencil  
and Make Up For  
Ever color cream.

Misuzu Miyake

[www.art-dept.com](http://www.art-dept.com)



# Art Department



Misuzu Miyake

[www.art-dept.com](http://www.art-dept.com)

# Art Department



Misuzu Miyake

[www.art-dept.com](http://www.art-dept.com)

# Art Department

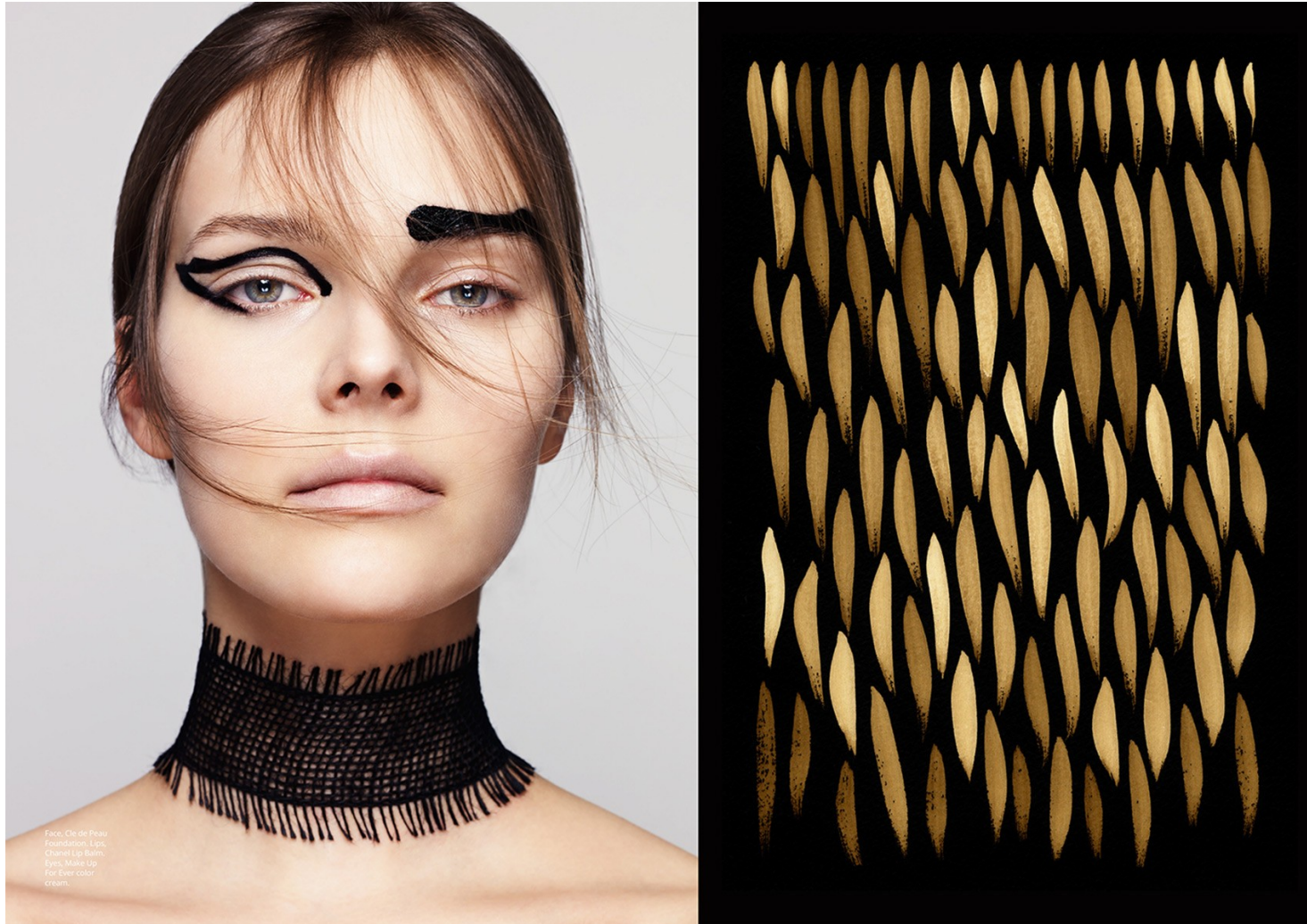


Face: Clé de Peau  
Foundation, Lip,  
Chanel's Baïn,  
Eyes, Make Up  
For Ever color cream  
Lips, MAC Russian  
red lipstick.

## Misuzu Miyake

[www.art-dept.com](http://www.art-dept.com)

# Art Department



Misuzu Miyake

[www.art-dept.com](http://www.art-dept.com)

# Art Department



Misuzu Miyake

[www.art-dept.com](http://www.art-dept.com)

# Art Department



Face: Cio de Peau  
Foundation, Lips,  
Chanel Lip Balm  
Eyes: Makeup  
Forever color cream,  
Lips: M.A.C Russian  
red lipstick

Makeup: Misuzu  
Miyake for M.A.C  
Hair: Bennett Grey  
using Oribe Hair Care  
Model: Julia Vallimaki  
at New York Model  
Management

## Misuzu Miyake

[www.art-dept.com](http://www.art-dept.com)

# Art Department



Misuzu Miyake

[www.art-dept.com](http://www.art-dept.com)

# Art Department



Misuzu Miyake

[www.art-dept.com](http://www.art-dept.com)



# Art Department



Misuzu Miyake

[www.art-dept.com](http://www.art-dept.com)

# Art Department



Misuzu Miyake

[www.art-dept.com](http://www.art-dept.com)

# Art Department



Misuzu Miyake

[www.art-dept.com](http://www.art-dept.com)

# Art Department



Misuzu Miyake

[www.art-dept.com](http://www.art-dept.com)

# Art Department



Misuzu Miyake

[www.art-dept.com](http://www.art-dept.com)

# Art Department

## ELLE beauty

фотосесия LARA ROSE с макияж MARISSA ADELE спон. MIZUZI MIYAKE с M.A.C. COSMETICS лока YUKIKO TAJIMA © WM ARTIST MANAGEMENT с фризури на ORBEE HAIR CARE  
манкиор MICHELLE MATTHEWS с фризури на ZOYA NAIL POLISH и космет. NELLI © WOMEN/360 MANAGEMENT фризури PARI KANG

Защото е цветна,  
защото е красива,  
защото е зареждаща...

Риза и брошулка  
VINTAGE илал  
VINTAGE DIANE  
VON FURSTENBERG  
очила АРХИВ НА  
СТИМИСТА

Об(л)ича ме  
пролетта!

## Misuzu Miyake

[www.art-dept.com](http://www.art-dept.com)

# Art Department



Рокля VINTAGE обеци  
АРХИВ НА СТИЛИСТА  
текстилно колие  
MIU MIU шал  
VINTAGE EVAN  
PICENO

НОВАТА ХИПИ ВИЗИЯ  
Големите обеци и тюрба-  
нът предлагат минимално  
количество цвят върху лице-  
то – добра основа плюс соч-  
ни устни в розов или праско-  
вен отенък и приключват.

**ГОЛЕМИЯТ ЕФЕКТ  
е в малките детайли**

Misuzu Miyake

[www.art-dept.com](http://www.art-dept.com)

# Art Department



## ЦВЕТНИ КОНТРАСТИ

С две ръце гласуваме за комбинацията от лазурно синьо за очите (използвайте целия арсенал от сенки, моливи, спирали...), страстни устни в червено и... слънчев маникюр в слънчево жълто.

Рокля VINTAGE  
уши VINTAGE  
OSCAR DE LA  
RENTA

## Misuzu Miyake

[www.art-dept.com](http://www.art-dept.com)



# Art Department



ELLE красота

**ELLE стайлинг**  
**идея:** шальт Върху спортна шапка е гениално решение!

**Грим съвет:** ако ще експериментирате с жълт маниюор, оставете той да е акцентът и за лицето изберете цветовете в гамата на дрехите и аксесоарите, които просто да подчертават, без да се открояват.

Богу VINTAGE  
тренкот VALENTINA  
KOVA шапка АРХИВ  
НА СТИВИСТА шал  
VINTAGE SILDARINI

## Misuzu Miyake

[www.art-dept.com](http://www.art-dept.com)

# Art Department



Misuzu Miyake

[www.art-dept.com](http://www.art-dept.com)

# Art Department



Misuzu Miyake

[www.art-dept.com](http://www.art-dept.com)

# Art Department



Misuzu Miyake

[www.art-dept.com](http://www.art-dept.com)

# Art Department



Misuzu Miyake

[www.art-dept.com](http://www.art-dept.com)

# Art Department



Misuzu Miyake

[www.art-dept.com](http://www.art-dept.com)

# Art Department



Misuzu Miyake

[www.art-dept.com](http://www.art-dept.com)

# Art Department



Misuzu Miyake

[www.art-dept.com](http://www.art-dept.com)



# Art Department



Misuzu Miyake

[www.art-dept.com](http://www.art-dept.com)

# Art Department



Misuzu Miyake

[www.art-dept.com](http://www.art-dept.com)

# Art Department



Misuzu Miyake

[www.art-dept.com](http://www.art-dept.com)

# Art Department

永久保存版 | ナイロニスタ HAIR カタログ / 水原希子、夏のビューティフルガール

# NYLON

オンリーワン  
おしゃれ  
スクラップ  
マガジン

JAPAN  
[ナイロン ジャパン]

**contents**  
今、流行ってるストリートヘア大特集  
ボブ/ショート/ミディアム/ロング  
ワールドItヘア SNAP  
NEW YORK LONDON PARIS  
MADRID MILAN SEOUL  
BANGKOK TAIPEI  
It girlの使える夏アイテムをpin!  
夢見る夏のコスメとポーチ  
中森あやみのアイコンックなストリート  
簡単おしゃれな最新ヘアアレンジ  
夏のkawaii美容プロダクト大解剖

special issue  
**水原希子**  
サマーストリート  
STYLE大特集

## new my hair

ヘアスタイル、ちょっと変えてみない?

8  
AUG 2015  
毎月28日発売  
NYLON.JP

Misuzu Miyake

[www.art-dept.com](http://www.art-dept.com)

# Art Department



アンドロイドのように。  
2009年にランウェイデビューしたばかりなのに、中世的な魅力で、早くも存在感を発揮しているロシア人モデル、ラニヤ・モルダノヴァ。ファニーなショートヘアとイノセントフェイスに目を奪われる。とりわけ特徴的なのは、瞳の色以上に黒いブラックヘア。この無機質なヘアが、アンドロイドのような不思議なニュアンスを醸し出している。

Ranya X  
Short

個性を主張するなら、モードコンシャスなショートで!

トランスジェンダーなファニー系から、キュート系、

エッジ系までお手本は多数。あなたならどれを狙う?

## Misuzu Miyake

[www.art-dept.com](http://www.art-dept.com)

# Art Department



Misuzu Miyake

[www.art-dept.com](http://www.art-dept.com)

# Art Department



Misuzu Miyake

[www.art-dept.com](http://www.art-dept.com)

# Art Department



Misuzu Miyake

[www.art-dept.com](http://www.art-dept.com)



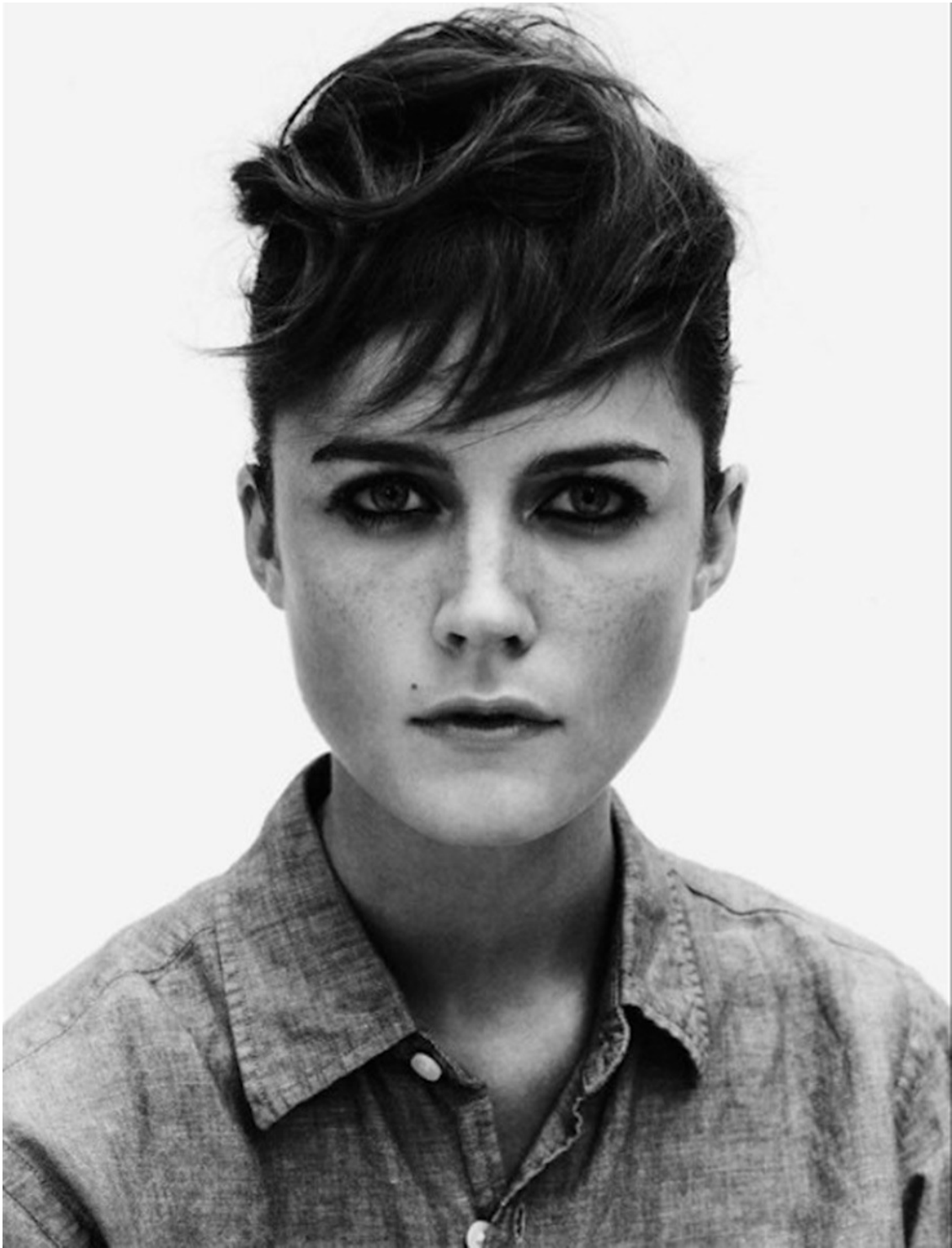
# Art Department



Misuzu Miyake

[www.art-dept.com](http://www.art-dept.com)

# Art Department



Misuzu Miyake

[www.art-dept.com](http://www.art-dept.com)

# Art Department



Misuzu Miyake

[www.art-dept.com](http://www.art-dept.com)

# Art Department



Misuzu Miyake

[www.art-dept.com](http://www.art-dept.com)