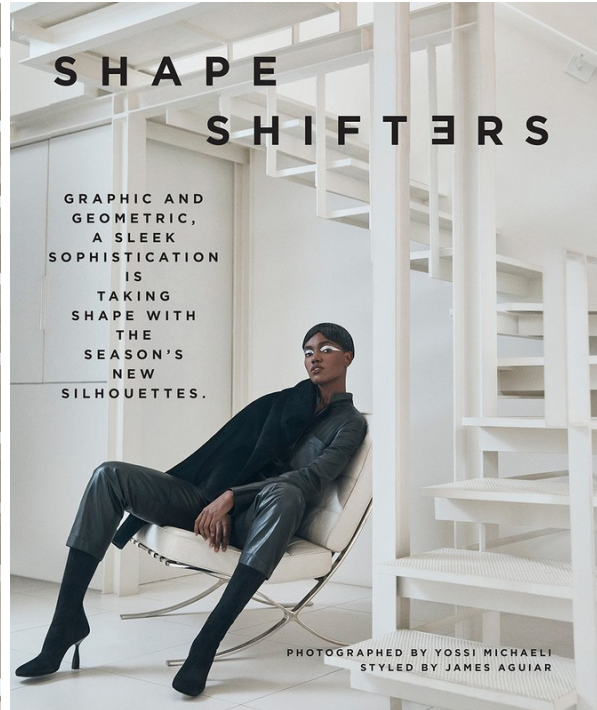


# Art Department



Misuzu Miyake

[www.art-dept.com](http://www.art-dept.com)

# Art Department



Misuzu Miyake

[www.art-dept.com](http://www.art-dept.com)

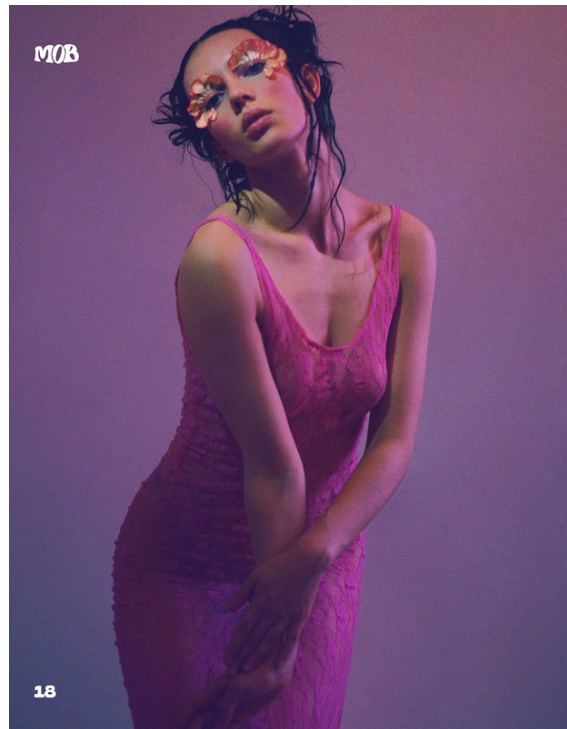
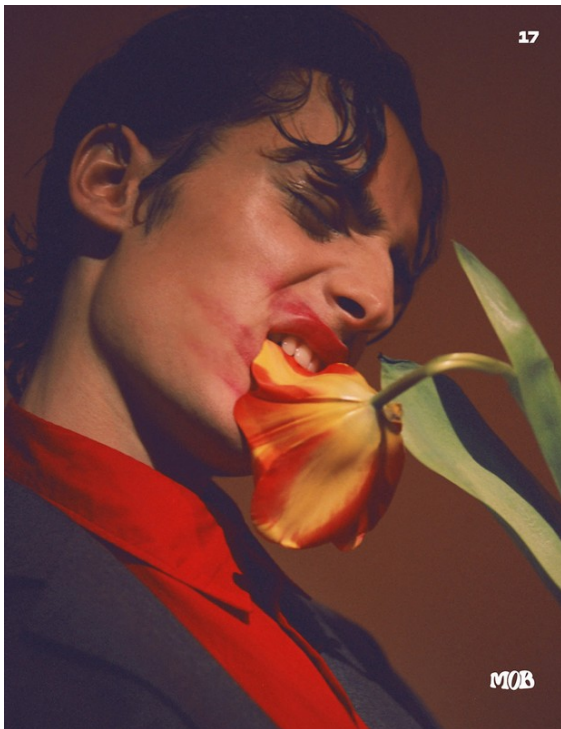
# Art Department



Misuzu Miyake

[www.art-dept.com](http://www.art-dept.com)

# Art Department



Misuzu Miyake

[www.art-dept.com](http://www.art-dept.com)

# Art Department



Misuzu Miyake

[www.art-dept.com](http://www.art-dept.com)

# Art Department



Misuzu Miyake

[www.art-dept.com](http://www.art-dept.com)

# Art Department



Misuzu Miyake

[www.art-dept.com](http://www.art-dept.com)

# Art Department

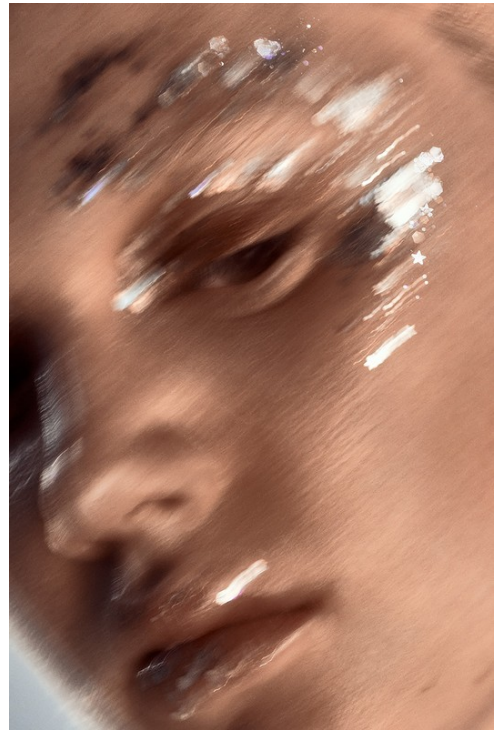
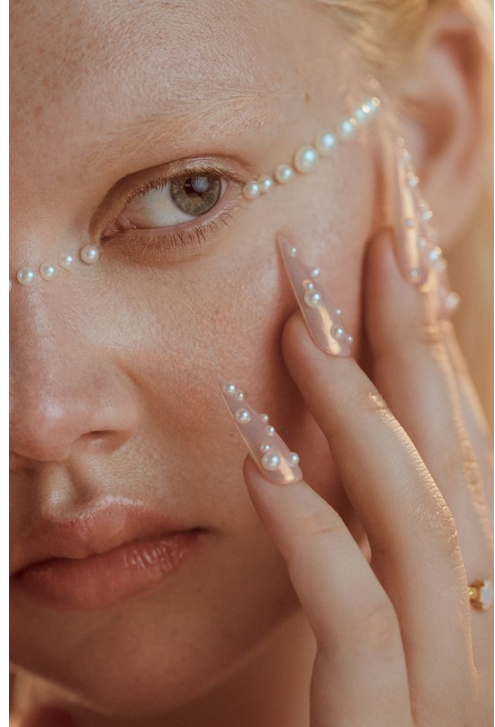


Misuzu Miyake

[www.art-dept.com](http://www.art-dept.com)



# Art Department



Misuzu Miyake

[www.art-dept.com](http://www.art-dept.com)

# Art Department



Misuzu Miyake

[www.art-dept.com](http://www.art-dept.com)

# Art Department



Misuzu Miyake

[www.art-dept.com](http://www.art-dept.com)

# Art Department



## Misuzu Miyake

[www.art-dept.com](http://www.art-dept.com)

# Art Department



## Misuzu Miyake

[www.art-dept.com](http://www.art-dept.com)

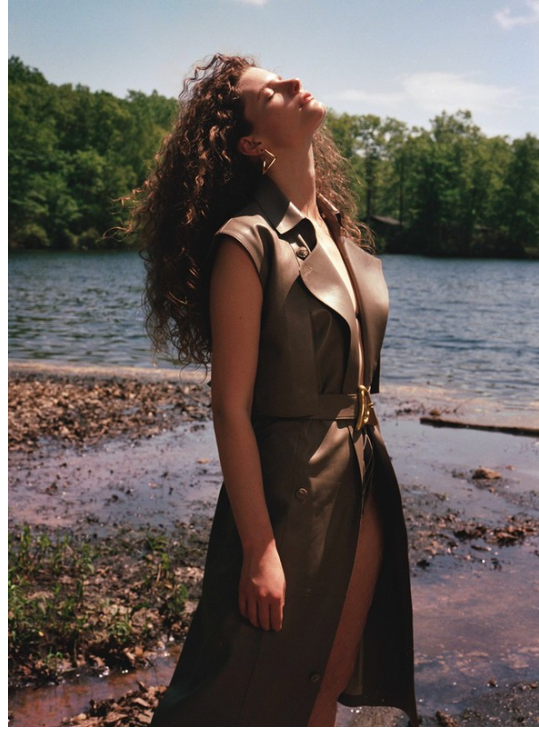
# Art Department



## Misuzu Miyake

[www.art-dept.com](http://www.art-dept.com)

# Art Department



Misuzu Miyake

[www.art-dept.com](http://www.art-dept.com)

# Art Department



Misuzu Miyake

[www.art-dept.com](http://www.art-dept.com)



# Art Department



## Misuzu Miyake

[www.art-dept.com](http://www.art-dept.com)

# Art Department



EN PORTADA  
Bombas: Heather Husy,  
Blusa: Cinessema,  
Quintas: Amato New York,  
Aros: Jennifer Fisher

## Pretty, cool and witty

Con el paso del tiempo, la moda vuelve a validarse como la máxima declaración de expresión. Esta temporada lo hace rindiendo homenaje a la esencia de lo natural y sus colores, a través de prendas oversize y volúmenes abultados, donde los accesorios como los maxi aretes y gafas cobran identidad propia.

Por Paola Sánchez

Producción: Marie Claire México.  
Fotografía: Fernando Sippel.  
Realización: Tatiana Cingolano - Art Department

103



Vestido de encaje  
y perlas: Gucci,  
Quintas: Amato New York



## Misuzu Miyake

[www.art-dept.com](http://www.art-dept.com)

# Art Department



Misuzu Miyake

[www.art-dept.com](http://www.art-dept.com)

# Art Department



Misuzu Miyake

[www.art-dept.com](http://www.art-dept.com)

# Art Department



Misuzu Miyake

[www.art-dept.com](http://www.art-dept.com)

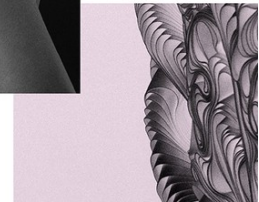
# Art Department



Misuzu Miyake

[www.art-dept.com](http://www.art-dept.com)

# Art Department



Misuzu Miyake

[www.art-dept.com](http://www.art-dept.com)

# Art Department

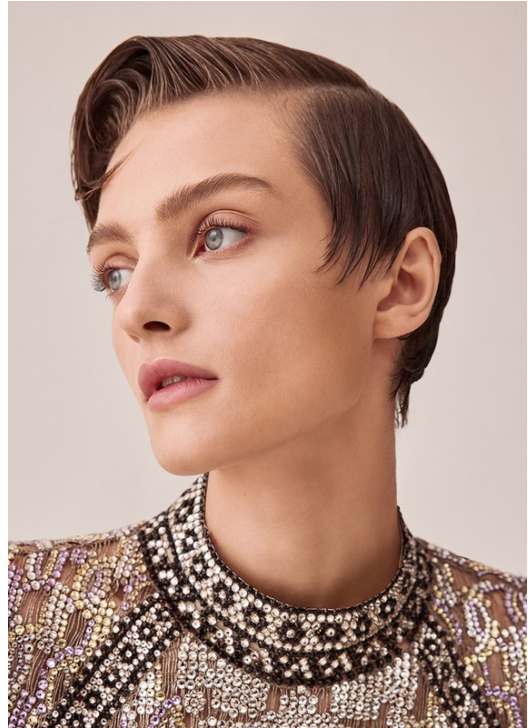


Misuzu Miyake

[www.art-dept.com](http://www.art-dept.com)



# Art Department



Misuzu Miyake

[www.art-dept.com](http://www.art-dept.com)

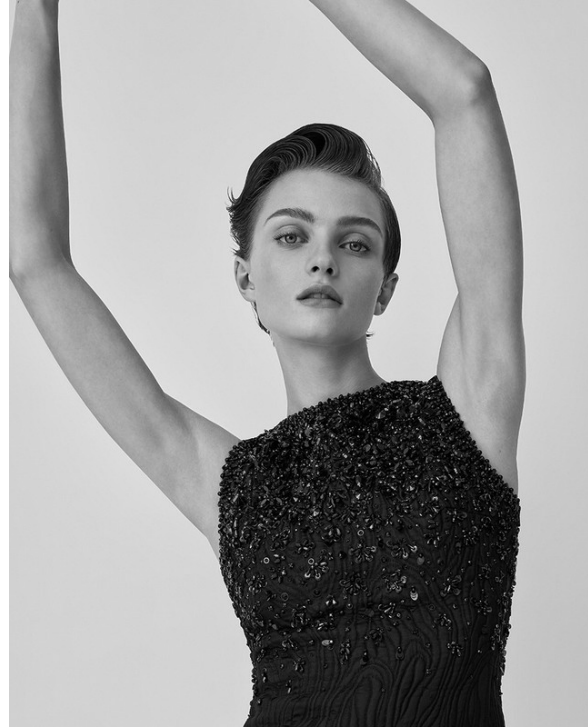
# Art Department



Misuzu Miyake

[www.art-dept.com](http://www.art-dept.com)

# Art Department



Misuzu Miyake

[www.art-dept.com](http://www.art-dept.com)

# Art Department



Misuzu Miyake

[www.art-dept.com](http://www.art-dept.com)

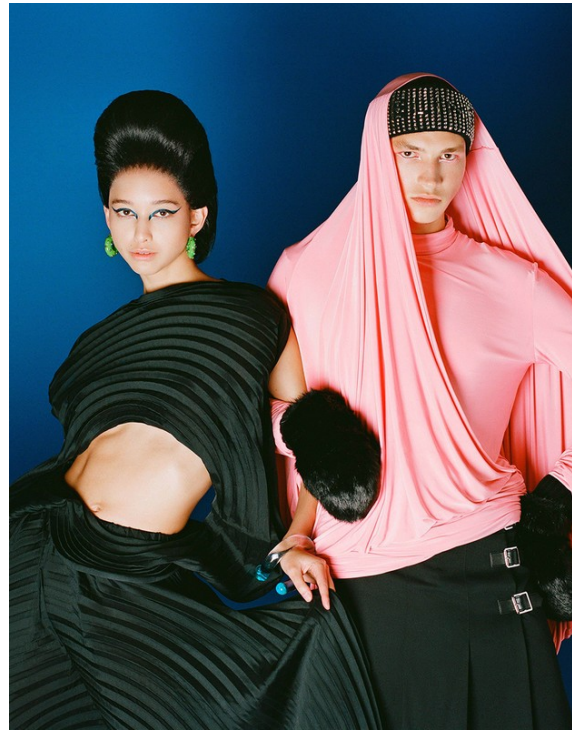
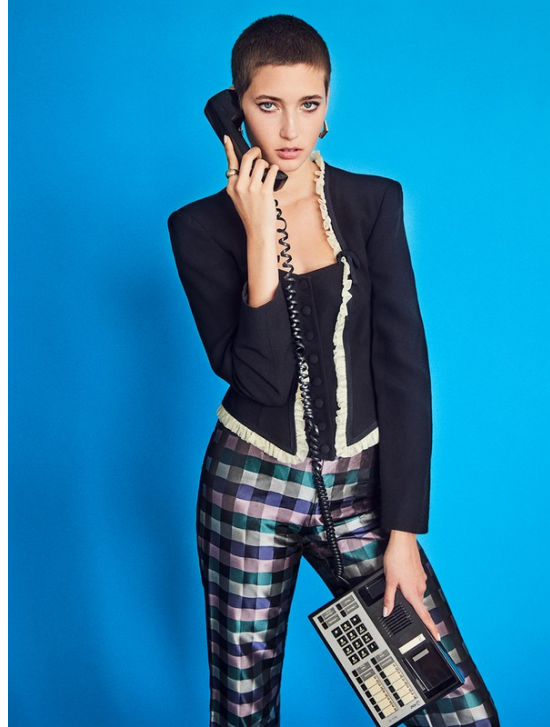
# Art Department



Misuzu Miyake

[www.art-dept.com](http://www.art-dept.com)

# Art Department



Misuzu Miyake

[www.art-dept.com](http://www.art-dept.com)

# Art Department



Misuzu Miyake

[www.art-dept.com](http://www.art-dept.com)

# Art Department



Misuzu Miyake

[www.art-dept.com](http://www.art-dept.com)



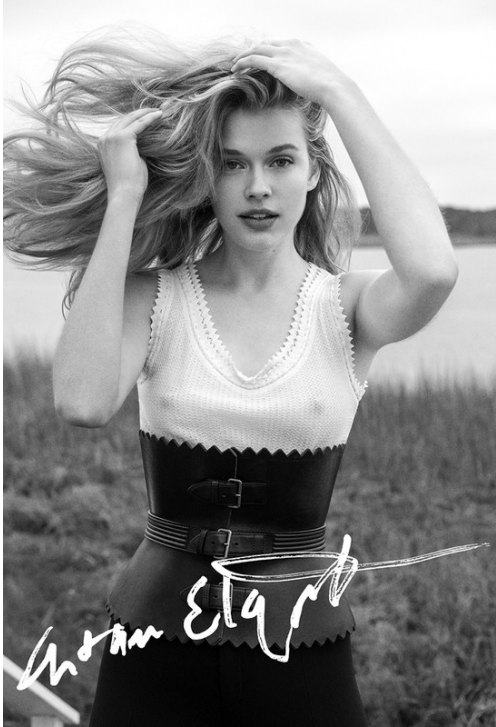
# Art Department



Misuzu Miyake

[www.art-dept.com](http://www.art-dept.com)

# Art Department



**PERMANENT  
PAPER** #1  
*Reconnection*



Victoria Lee  
By  
Arthur Elgort



## Misuzu Miyake

[www.art-dept.com](http://www.art-dept.com)

# Art Department



Misuzu Miyake

[www.art-dept.com](http://www.art-dept.com)

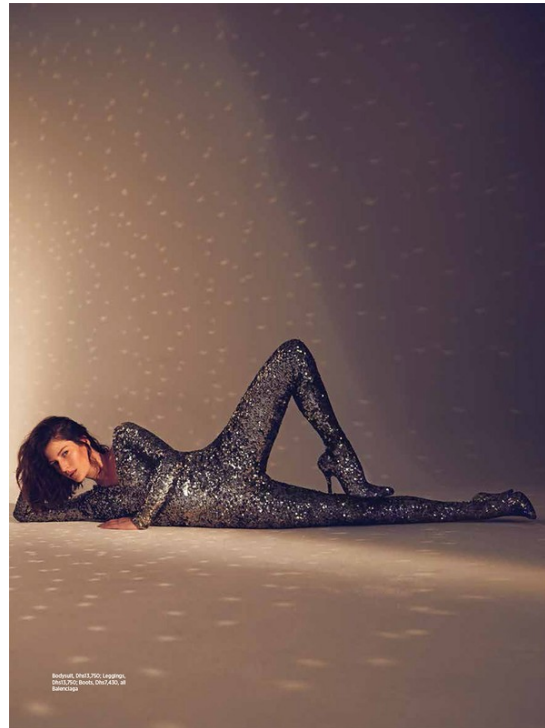
# Art Department



## Misuzu Miyake

[www.art-dept.com](http://www.art-dept.com)

# Art Department



## Misuzu Miyake

[www.art-dept.com](http://www.art-dept.com)

# Art Department



Misuzu Miyake

[www.art-dept.com](http://www.art-dept.com)

# Art Department



Misuzu Miyake

[www.art-dept.com](http://www.art-dept.com)

# Art Department



## Misuzu Miyake

[www.art-dept.com](http://www.art-dept.com)



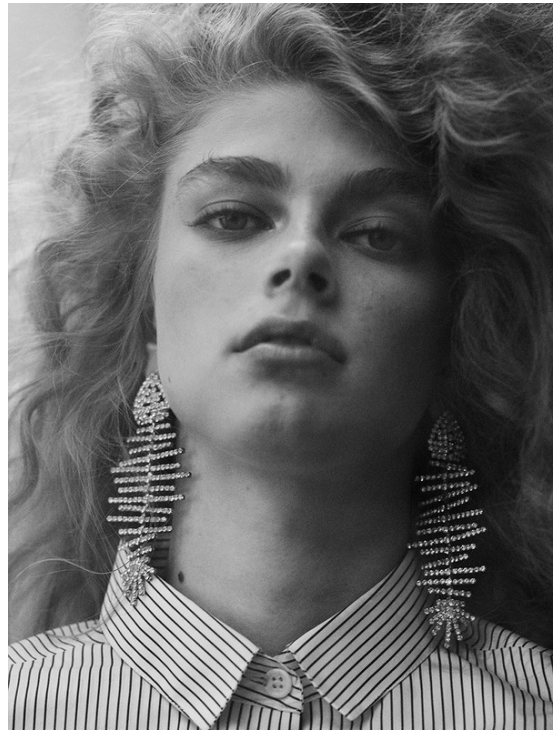
# Art Department



## Misuzu Miyake

www.art-dept.com

# Art Department



Misuzu Miyake

[www.art-dept.com](http://www.art-dept.com)

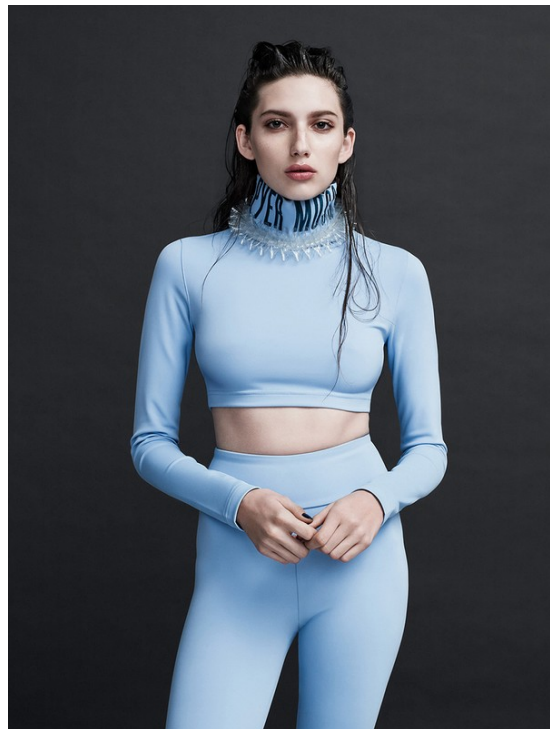
# Art Department



Misuzu Miyake

[www.art-dept.com](http://www.art-dept.com)

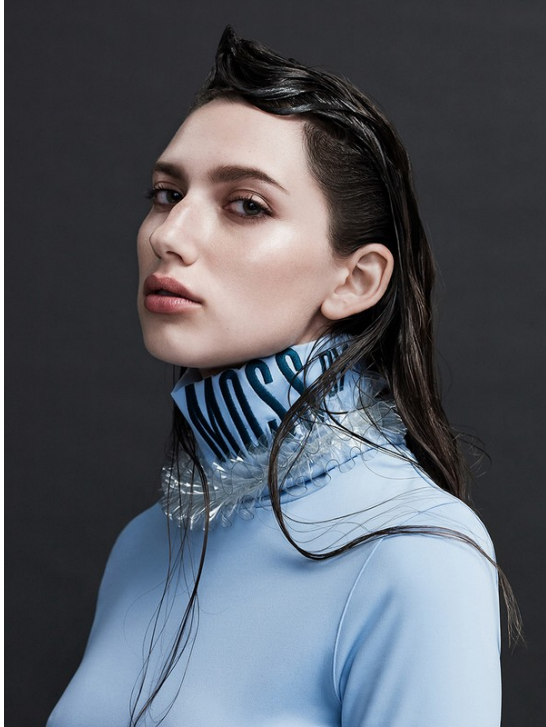
# Art Department



Misuzu Miyake

[www.art-dept.com](http://www.art-dept.com)

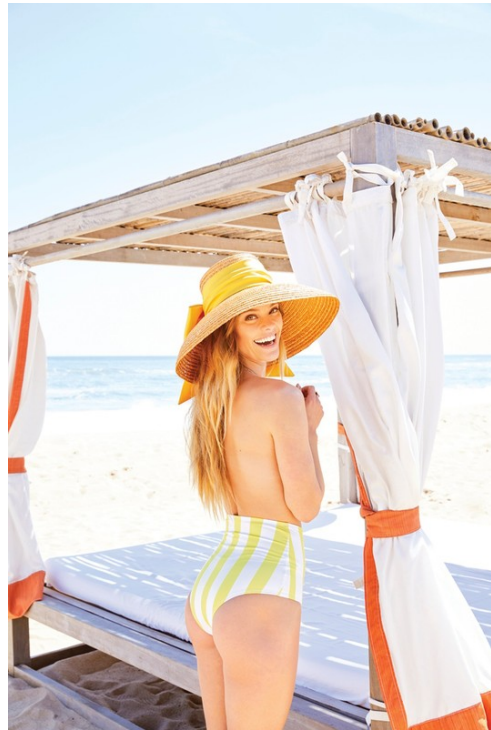
# Art Department



Misuzu Miyake

[www.art-dept.com](http://www.art-dept.com)

# Art Department



Misuzu Miyake

[www.art-dept.com](http://www.art-dept.com)

# Art Department



Misuzu Miyake

[www.art-dept.com](http://www.art-dept.com)

# Art Department



Misuzu Miyake

[www.art-dept.com](http://www.art-dept.com)



# Art Department



Misuzu Miyake

[www.art-dept.com](http://www.art-dept.com)

# Art Department



Misuzu Miyake

[www.art-dept.com](http://www.art-dept.com)

# Art Department



Misuzu Miyake

[www.art-dept.com](http://www.art-dept.com)

# Art Department



Misuzu Miyake

[www.art-dept.com](http://www.art-dept.com)

# Art Department



Misuzu Miyake

[www.art-dept.com](http://www.art-dept.com)

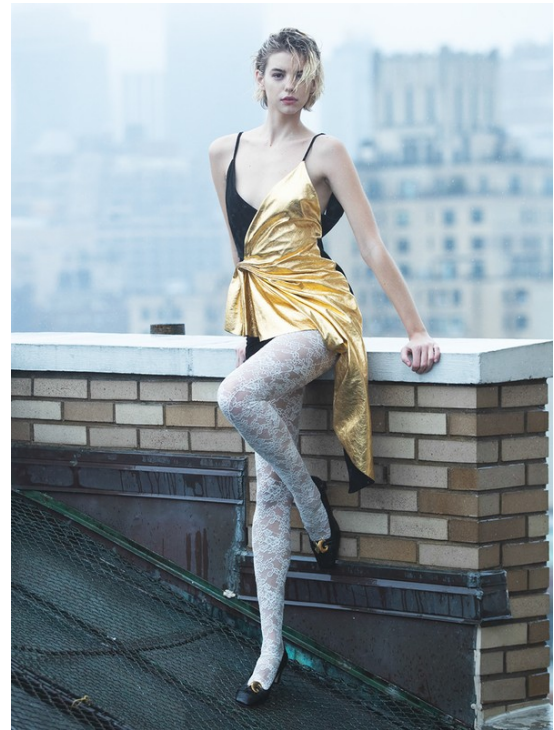
# Art Department



Misuzu Miyake

[www.art-dept.com](http://www.art-dept.com)

# Art Department



Misuzu Miyake

[www.art-dept.com](http://www.art-dept.com)

# Art Department



## Misuzu Miyake

[www.art-dept.com](http://www.art-dept.com)



# Art Department



## Misuzu Miyake

www.art-dept.com

# Art Department



Tropical green brightens up the look, and the ruffles add a touch of drama. The dress is made of silk and is a collaboration with the artist. **STYLING: VAN CLEEF & ARPEL**



Model: Emily Rappaport  
 Hair: Gennepucci  
 Makeup: Maura Meyer  
 Styling: Maura Meyer  
 Art Department: Maura Meyer  
 Factory: Downtown



## SHORE THING

OUR MODEL IS DRESSED IN THE SEASON'S LATEST COLLECTIONS AND TAKES BEACH FUN TO A NEW LEVEL.

PHOTOGRAPHER: HELEN ERICSSON  
 STYLING: LEVINSKY BONDRO  
 MODEL: ALEX ANDERSON IN THE LIONS  
 HAIR: TONY TOSQUE (MILWAUKEE) / LINDSAY ORR  
 MAKE-UP ARTIST: MISUZU MIYAKE (JUNO) / LAURA MERCIER  
 POST-PRODUCTION: KAMARIA GRENAY  
 PRODUCTION: ALEXY GALESKY PRODUCTIONS

HAIR: TONY TOSQUE (MILWAUKEE) / LINDSAY ORR  
 MAKE-UP ARTIST: MISUZU MIYAKE (JUNO) / LAURA MERCIER  
 POST-PRODUCTION: KAMARIA GRENAY  
 PRODUCTION: ALEXY GALESKY PRODUCTIONS

## Misuzu Miyake

# Art Department



Misuzu Miyake

[www.art-dept.com](http://www.art-dept.com)

# Art Department



Misuzu Miyake

[www.art-dept.com](http://www.art-dept.com)

# Art Department



Misuzu Miyake

[www.art-dept.com](http://www.art-dept.com)

# Art Department



## Misuzu Miyake

[www.art-dept.com](http://www.art-dept.com)

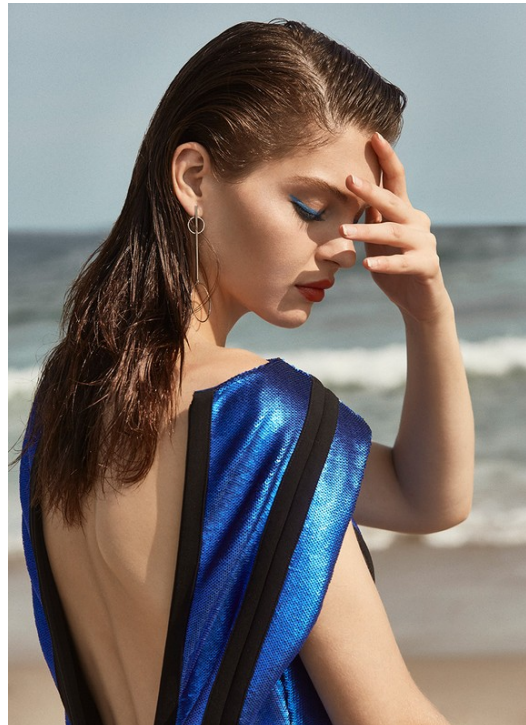
# Art Department



Misuzu Miyake

[www.art-dept.com](http://www.art-dept.com)

# Art Department



## Misuzu Miyake

www.art-dept.com



# Art Department



Misuzu Miyake

[www.art-dept.com](http://www.art-dept.com)

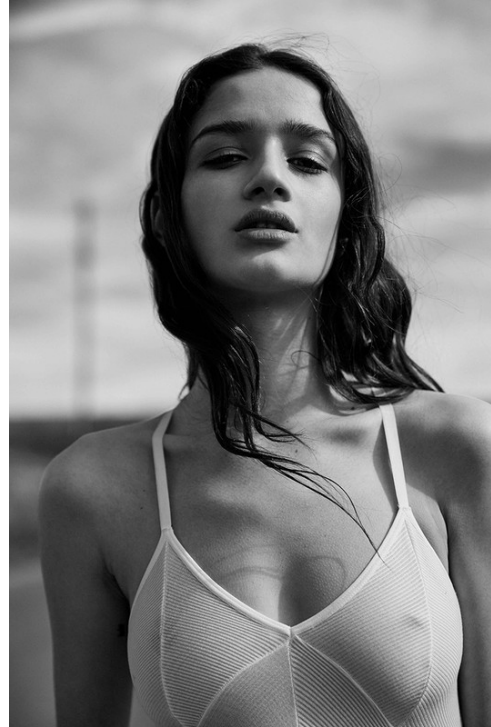
# Art Department



Misuzu Miyake

[www.art-dept.com](http://www.art-dept.com)

# Art Department



Misuzu Miyake

[www.art-dept.com](http://www.art-dept.com)

# Art Department



Misuzu Miyake

[www.art-dept.com](http://www.art-dept.com)

# Art Department



## Misuzu Miyake

[www.art-dept.com](http://www.art-dept.com)



# Art Department



## Misuzu Miyake

[www.art-dept.com](http://www.art-dept.com)

# Art Department



## Misuzu Miyake

[www.art-dept.com](http://www.art-dept.com)



# Art Department



Misuzu Miyake

[www.art-dept.com](http://www.art-dept.com)

# Art Department

PIBE



**FREE  
BY NATURE**

PHOTOGRAPHY SARAI MARI  
STYLING MIMI KIM



dress ODAY SHAKAR, scarf MONA SULTAN



## Misuzu Miyake

[www.art-dept.com](http://www.art-dept.com)

# Art Department



## Misuzu Miyake

[www.art-dept.com](http://www.art-dept.com)

# Art Department



## Misuzu Miyake

[www.art-dept.com](http://www.art-dept.com)

# Art Department



Misuzu Miyake

[www.art-dept.com](http://www.art-dept.com)

# Art Department



Misuzu Miyake

[www.art-dept.com](http://www.art-dept.com)

# Art Department



Misuzu Miyake

[www.art-dept.com](http://www.art-dept.com)

# Art Department



Misuzu Miyake

[www.art-dept.com](http://www.art-dept.com)



# Art Department



Misuzu Miyake

[www.art-dept.com](http://www.art-dept.com)

# Art Department



## Misuzu Miyake

www.art-dept.com

# Art Department



Misuzu Miyake

[www.art-dept.com](http://www.art-dept.com)

# Art Department



Misuzu Miyake

[www.art-dept.com](http://www.art-dept.com)

# Art Department



Misuzu Miyake

[www.art-dept.com](http://www.art-dept.com)

# Art Department



Misuzu Miyake

[www.art-dept.com](http://www.art-dept.com)

# Art Department



Misuzu Miyake

[www.art-dept.com](http://www.art-dept.com)

# Art Department



Misuzu Miyake

[www.art-dept.com](http://www.art-dept.com)



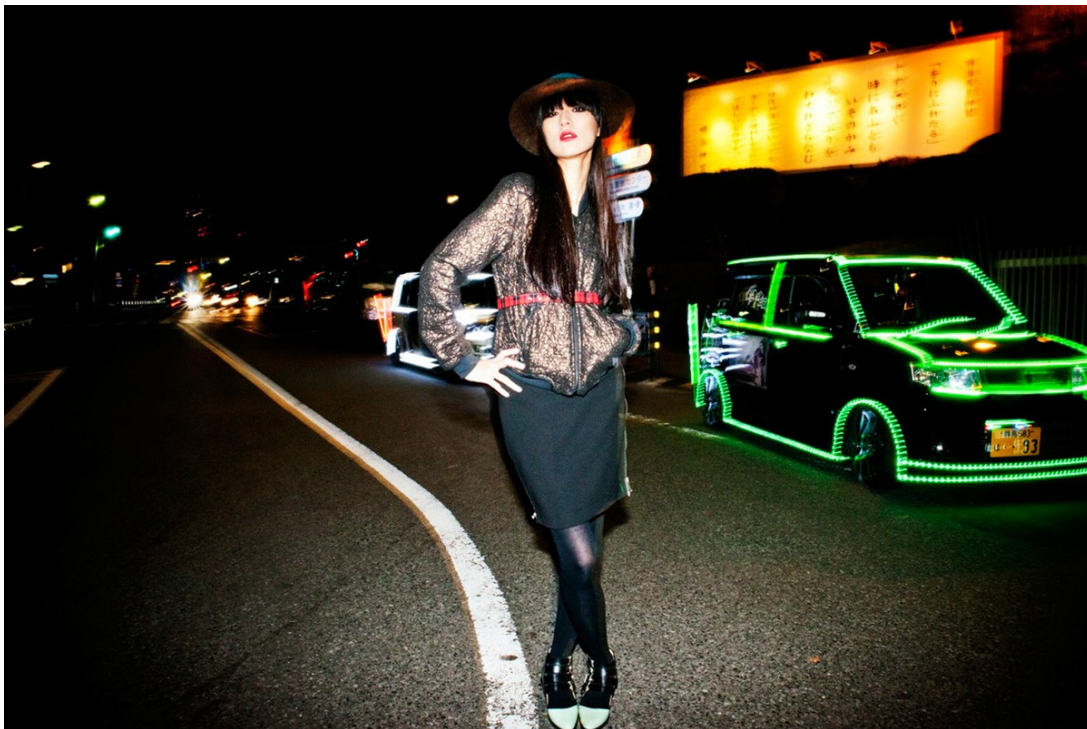
# Art Department



Misuzu Miyake

[www.art-dept.com](http://www.art-dept.com)

# Art Department



Misuzu Miyake

[www.art-dept.com](http://www.art-dept.com)

# Art Department



Misuzu Miyake

[www.art-dept.com](http://www.art-dept.com)

# Art Department



Misuzu Miyake

[www.art-dept.com](http://www.art-dept.com)

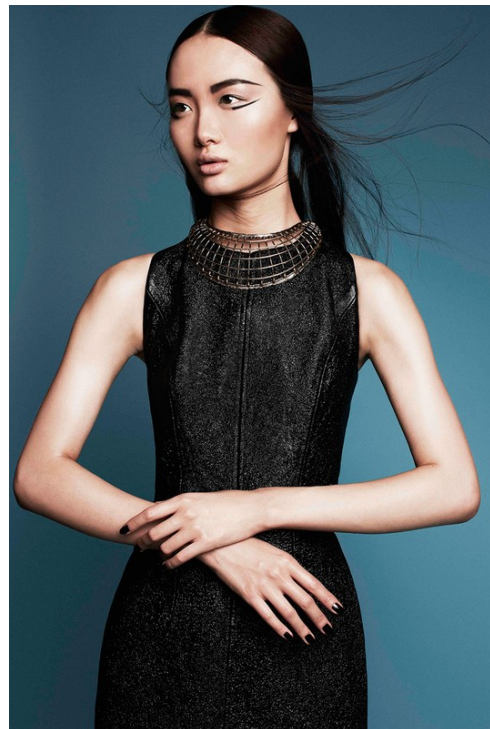
# Art Department



Misuzu Miyake

[www.art-dept.com](http://www.art-dept.com)

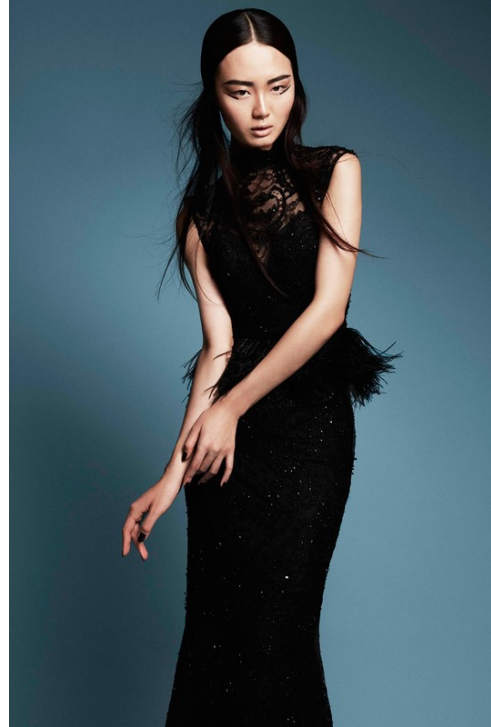
# Art Department



Misuzu Miyake

[www.art-dept.com](http://www.art-dept.com)

# Art Department



Misuzu Miyake

[www.art-dept.com](http://www.art-dept.com)

# Art Department



Misuzu Miyake

[www.art-dept.com](http://www.art-dept.com)



# Art Department



Misuzu Miyake

[www.art-dept.com](http://www.art-dept.com)

# Art Department



Misuzu Miyake

[www.art-dept.com](http://www.art-dept.com)

# Art Department



Misuzu Miyake

[www.art-dept.com](http://www.art-dept.com)

# Art Department



Misuzu Miyake

[www.art-dept.com](http://www.art-dept.com)