

Art Department



Misuzu Miyake

www.art-dept.com

Art Department



Misuzu Miyake

www.art-dept.com

Art Department



Misuzu Miyake

www.art-dept.com

Art Department



Misuzu Miyake

www.art-dept.com

Art Department



Misuzu Miyake

www.art-dept.com

Art Department



Misuzu Miyake

www.art-dept.com

Art Department



Misuzu Miyake

www.art-dept.com

Art Department



Misuzu Miyake

www.art-dept.com

Art Department



Misuzu Miyake

www.art-dept.com

Art Department



Chanel Fantasy Tweed jacket,
Fantasy Tweed skirt, metal resin
earrings, metal resin necklace,
printed calfskin boots and black
patent leather bag, chanel.com.

Misuzu Miyake

www.art-dept.com

Art Department



Misuzu Miyake

www.art-dept.com

Art Department



Misuzu Miyake

www.art-dept.com

Art Department



Misuzu Miyake

www.art-dept.com

Art Department



Misuzu Miyake

www.art-dept.com

Art Department



Misuzu Miyake

www.art-dept.com

Art Department



Misuzu Miyake

www.art-dept.com

Art Department



Misuzu Miyake

www.art-dept.com

Art Department



Misuzu Miyake

www.art-dept.com

Art Department



Misuzu Miyake

www.art-dept.com

Art Department



Misuzu Miyake

www.art-dept.com

Art Department



Misuzu Miyake

www.art-dept.com

Art Department



Misuzu Miyake

www.art-dept.com

Art Department



Misuzu Miyake

www.art-dept.com

Art Department



Misuzu Miyake

www.art-dept.com

Art Department



Misuzu Miyake

www.art-dept.com

Art Department



Misuzu Miyake

www.art-dept.com

Art Department



Misuzu Miyake

www.art-dept.com

Art Department



Misuzu Miyake

www.art-dept.com

Art Department



Misuzu Miyake

www.art-dept.com

Art Department



Misuzu Miyake

www.art-dept.com

Art Department



Misuzu Miyake

www.art-dept.com

Art Department



Misuzu Miyake

www.art-dept.com

Art Department



Misuzu Miyake

www.art-dept.com

Art Department



Misuzu Miyake

www.art-dept.com

Art Department



Misuzu Miyake

www.art-dept.com

Art Department



Misuzu Miyake

www.art-dept.com

Art Department



Misuzu Miyake

www.art-dept.com

Art Department



Misuzu Miyake

www.art-dept.com

Art Department



Misuzu Miyake

www.art-dept.com

Art Department



ELLE

HØST-FAVORITTER
Plagg, tilbehør og makeup vi ønsker oss denne sesongen

EKSTRA! ELLE DECORATION
Over 50 sider inspirerende interiør

ER NUMEROLOGI DEN NYE ASTROLOGIEN?
Finne ditt tall

SYNK HUDPLEIEN MED SYKLUSEN
12 TIPS FOR BEDRE SØVN

MOTE, INTERIØR & REISETIPS FRA

**NEW YORK
OSLO
PARIS**

Misuzu Miyake

www.art-dept.com

Art Department



Misuzu Miyake

www.art-dept.com

Art Department



Misuzu Miyake

www.art-dept.com

Art Department



Misuzu Miyake

www.art-dept.com

Art Department



Misuzu Miyake

www.art-dept.com

Art Department



Misuzu Miyake

www.art-dept.com

Art Department



Misuzu Miyake

www.art-dept.com

Art Department

LIKE A BOSS

SUIT UP IN STYLES FIT FOR THE BOARDROOM OR THE BEDROOM.

PHOTOGRAPHY BY **INGE FONTEYNE** STYLED BY **JENNIFER MAZUR**

Bra by Deborah Marquis.
Shoes by Jimmy Choo.
Blanket by Celine.

A black and white fashion photograph of a woman with dark, wavy hair and bangs, sitting on a dark, draped fabric. She is wearing a dark, lace-trimmed bra and a large, patterned blanket with the word 'CELINE' repeated in a bold, sans-serif font. She is also wearing dark, lace-up boots. The lighting is dramatic, highlighting her face and the texture of the blanket. The background is dark and out of focus.

Misuzu Miyake

www.art-dept.com

Art Department



180 venicemag.it Fall 2022

Dress and corset by Maison
Margiela. Hat by Roger Vivier.
Shoes by Valentino.

Misuzu Miyake

www.art-dept.com

Art Department



Misuzu Miyake

www.art-dept.com

Art Department



Jacket by Dsquared2.
Pants by Frankie.
Shoes by Jimmy Choo.
Jewelry by Chanel.

Misuzu Miyake

www.art-dept.com

Art Department



Lingerie by Deborah Marquit.

Fall 2022 venicemag.tl.com 183

Misuzu Miyake

www.art-dept.com

Art Department



Misuzu Miyake

www.art-dept.com

Art Department



Lingerie by Deborah
Marquitt. Coat and earrings
by Alexander McQueen.

Misuzu Miyake

www.art-dept.com

Art Department



On left: Dress by Valentino.
Socks by Wolford. Heels by
Valentino.
On right: Jacket, pants and
shoes by Dolce & Gabbana.

Crew credits:
Models: Renee Wilkins @ Elite Models
Vanessa Moreira @ IMG Models
Photographer: Inge Fonteyne
Videographer: Jason Riker
Photo Assistant: Anna Campbell
Stylist: Jennifer Mazur
Associate Stylist: Izabella Pesero
Wardrobe Assistant: Kennedy Dickie
Makeup Artist: Misuzu Miyake using M.A.C.
Cosmetics @ Art Department
Hair: Satoshi Ikeda @ Art Department
Special thanks to Laura Mannix at Bergdorf
Goodman Studio Services.

Fall 2022 venicemagftl.com 187

Misuzu Miyake

www.art-dept.com

Art Department



Misuzu Miyake

www.art-dept.com

Art Department



Misuzu Miyake

www.art-dept.com

Art Department



Misuzu Miyake

www.art-dept.com

Art Department



Misuzu Miyake

www.art-dept.com

Art Department



Misuzu Miyake

www.art-dept.com

Art Department



Misuzu Miyake

www.art-dept.com

Art Department



Misuzu Miyake

www.art-dept.com

Art Department



Misuzu Miyake

www.art-dept.com

Art Department



Misuzu Miyake

www.art-dept.com

Art Department



Misuzu Miyake

www.art-dept.com

Art Department



Misuzu Miyake

www.art-dept.com

Art Department



Misuzu Miyake

www.art-dept.com

Art Department



Misuzu Miyake

www.art-dept.com

Art Department



marie claire
marieclaire.com.mx M É X I C O

KYLIE
VONNAHE

+
MODA //
ADIÓS INVIERNO
Tendencias para triunfar
con estilo en este 2022

BEAUTY //
SIEMPRE BELLA
Beauty reset de pies a
cabeza para verte guapa
a cualquier edad

TRUE **LOVE** ISSUE

El mes de los enamorados
RESTAURANTES, VIAJES, REGALOS,
todo para hacer en pareja

**CAMBIO
DE ENFOQUE**
LOS TEMAS QUE
SON IMPORTANTES
Mujeres que cambian el
mundo, masculinidad sana,
relaciones tóxicas

\$69.00 M.N.

7 503034 412199

Misuzu Miyake

www.art-dept.com

Art Department



EN PORTADA

Sombrero, Heather Huey,
Blazer, Zimmerman,
Guantes, Amato New York,
Arecas, Jennifer Fisher.

Pretty, cool and witty

Con el paso del tiempo, la moda vuelve a validarse como la máxima declaración de expresión. Esta temporada lo hace rindiendo homenaje a la esencia de lo natural y sus colores, a través de prendas oversize y volúmenes abullonados, donde los accesorios como los maxi aretes y gafas cobran identidad propia.

Por: Paola Sánchez

Producción: Marie Claire México.
Fotografía: Fernando Sippel.
Realización: Tatiana Cinquino - Art Department

103

Misuzu Miyake

www.art-dept.com

Art Department



Vestido de encaje
y pendientes, **Gucci**,
Guantes, **Amato New York**.

Misuzu Miyake

www.art-dept.com

Art Department



Misuzu Miyake

www.art-dept.com

Art Department

EN PORTADA

Aros samira y aretes,
Jennifer Fisher, Vestido sin
espalda con tirantes de piel,
Saint Laurent, Guantes,
Amato New York.



Misuzu Miyake

www.art-dept.com

Art Department



Misuzu Miyake

www.art-dept.com

Art Department



Misuzu Miyake

www.art-dept.com

Art Department



Misuzu Miyake

www.art-dept.com

Art Department



Misuzu Miyake

www.art-dept.com

Art Department



Misuzu Miyake

www.art-dept.com

Art Department



Misuzu Miyake

www.art-dept.com

Art Department



Misuzu Miyake

www.art-dept.com

Art Department



Misuzu Miyake

www.art-dept.com

Art Department



Misuzu Miyake

www.art-dept.com

Art Department



Misuzu Miyake

www.art-dept.com

Art Department



Misuzu Miyake

www.art-dept.com

Art Department



Misuzu Miyake

www.art-dept.com

Art Department



Misuzu Miyake

www.art-dept.com

Art Department



Misuzu Miyake

www.art-dept.com

Art Department



Misuzu Miyake

www.art-dept.com

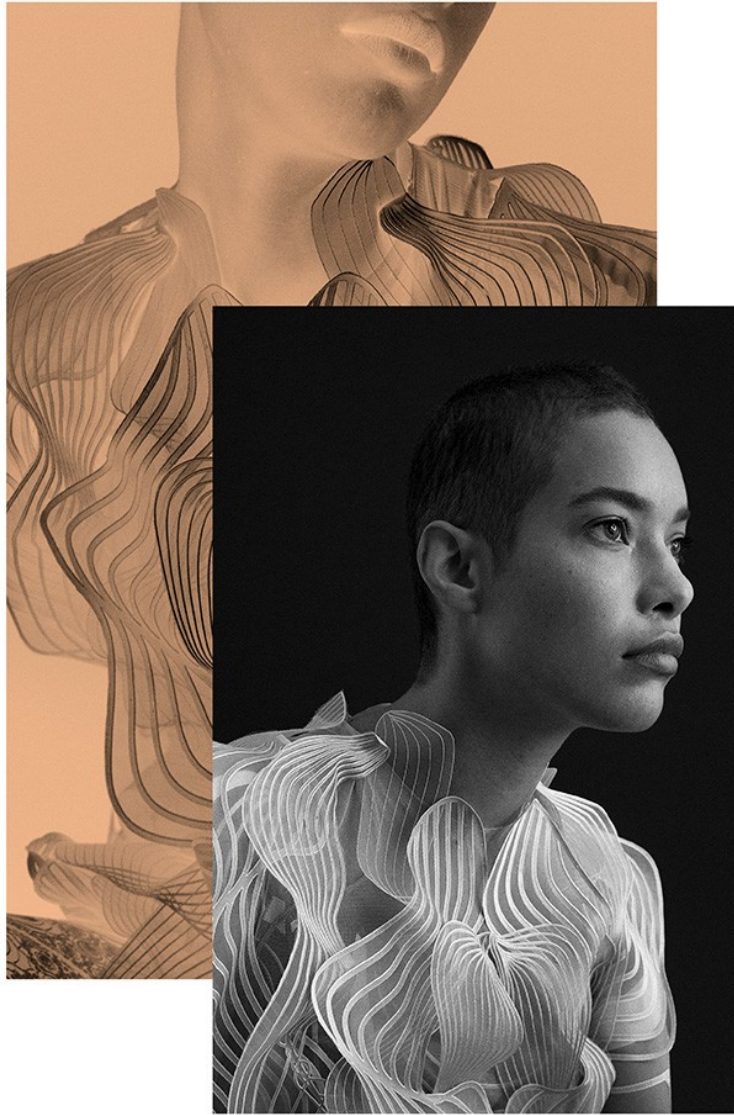
Art Department



Misuzu Miyake

www.art-dept.com

Art Department



Misuzu Miyake

www.art-dept.com

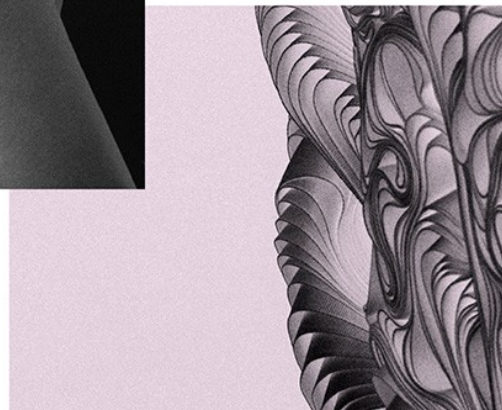
Art Department



Misuzu Miyake

www.art-dept.com

Art Department



Misuzu Miyake

www.art-dept.com

Art Department



Misuzu Miyake

www.art-dept.com

Art Department



Misuzu Miyake

www.art-dept.com

Art Department



Misuzu Miyake

www.art-dept.com

Art Department



Misuzu Miyake

www.art-dept.com

Art Department



Misuzu Miyake

www.art-dept.com

Art Department



Misuzu Miyake

www.art-dept.com

Art Department



Misuzu Miyake

www.art-dept.com

Art Department



Misuzu Miyake

www.art-dept.com

Art Department



Misuzu Miyake

www.art-dept.com

Art Department



Misuzu Miyake

www.art-dept.com

Art Department



Misuzu Miyake

www.art-dept.com

Art Department



Misuzu Miyake

www.art-dept.com

Art Department



Misuzu Miyake

www.art-dept.com

Art Department



Misuzu Miyake

www.art-dept.com

Art Department



Misuzu Miyake

www.art-dept.com

Art Department



Misuzu Miyake

www.art-dept.com

Art Department



Misuzu Miyake

www.art-dept.com

Art Department



Misuzu Miyake

www.art-dept.com

Art Department



Misuzu Miyake

www.art-dept.com

Art Department



Misuzu Miyake

www.art-dept.com

Art Department



Misuzu Miyake

www.art-dept.com

Art Department



Misuzu Miyake

www.art-dept.com

Art Department



Misuzu Miyake

www.art-dept.com

Art Department



Misuzu Miyake

www.art-dept.com

Art Department



Misuzu Miyake

www.art-dept.com

Art Department



Misuzu Miyake

www.art-dept.com

Art Department



Misuzu Miyake

www.art-dept.com

Art Department



Misuzu Miyake

www.art-dept.com

Art Department



Misuzu Miyake

www.art-dept.com

Art Department



Misuzu Miyake

www.art-dept.com

Art Department



Misuzu Miyake

www.art-dept.com

Art Department



Misuzu Miyake

www.art-dept.com

Art Department



Misuzu Miyake

www.art-dept.com

Art Department



Misuzu Miyake

www.art-dept.com

Art Department



Misuzu Miyake

www.art-dept.com

Art Department



Misuzu Miyake

www.art-dept.com

Art Department



Misuzu Miyake

www.art-dept.com

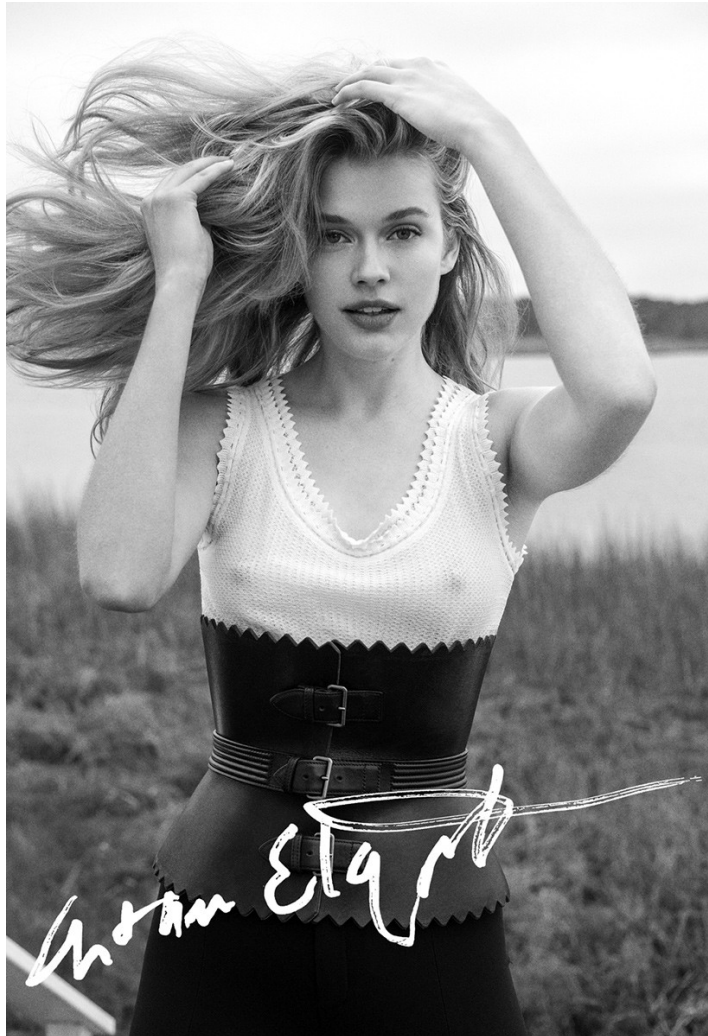
Art Department



Misuzu Miyake

www.art-dept.com

Art Department



PERMANENT
PAPER #1

Reconnection



Victoria Lee
By
Arthur Elgort

Misuzu Miyake

www.art-dept.com

Art Department



Misuzu Miyake

www.art-dept.com

Art Department



Misuzu Miyake

www.art-dept.com

Art Department



Misuzu Miyake

www.art-dept.com

Art Department



Misuzu Miyake

www.art-dept.com

Art Department



Misuzu Miyake

www.art-dept.com

Art Department



Misuzu Miyake

www.art-dept.com

Art Department



Misuzu Miyake

www.art-dept.com

Art Department



Misuzu Miyake

www.art-dept.com

Art Department



Dress, Dhs28,100, Bottega Veneta

Model: Jennae Quisenberry at Muse
Model: Make-up: Misuzu Miyake
at Art Department. Hair: Jerome
Cultrera at L'atelier NYC. Photography
Assistant: Héctor Adalid. Casting: Cano
Casting. Styling Assistant: Inés Itsaso.
Production: Sasha Corban Production
Services & Nicholette Hallis. Prop
styling: Conor Fay

135 HarpersBazaarArabia.com December 2020

Misuzu Miyake

www.art-dept.com

Art Department



Bodysuit, Dhs13,750; Leggings,
Dhs13,750; Boots, Dhs7,490, all
Balenciaga

Misuzu Miyake

www.art-dept.com

Art Department



Misuzu Miyake

www.art-dept.com

Art Department



Misuzu Miyake

www.art-dept.com

Art Department



Misuzu Miyake

www.art-dept.com

Art Department



Misuzu Miyake

www.art-dept.com

Art Department



Misuzu Miyake

www.art-dept.com

Art Department



Misuzu Miyake

www.art-dept.com

Art Department



Misuzu Miyake

www.art-dept.com

Art Department



Golden Flower Earrings Isabella
May Top and Skirt Sienna Li
opposite page Floral Driver Glove
Wing & Welt Gloves Asymmetric
Flocked-Tulle Top Mola Walker

Misuzu Miyake

www.art-dept.com

Art Department



Misuzu Miyake

www.art-dept.com

Art Department



Floral Driver Glove Wing & Weft Gloves
Asymmetric Flocked-Tulle Top Mola
Walker opposite page Rhinestone
Collar Erickson Beamon Francoise
Gown Flor et.al Thyra Heel Jimmy Choo.

Misuzu Miyake

www.art-dept.com

Art Department

LUCY'S 176



Misuzu Miyake

www.art-dept.com

Art Department



Golden Flower Earrings Isabella
May Top and Skirt Sienna Li
opposite page Pearl Drop Earrings
Isabella May Rhode Dress Stine Goya

Misuzu Miyake

www.art-dept.com

Art Department

The magazine cover features a woman in a vibrant red, intricately patterned, flowing garment by Misuzumi Miyake, walking across a city street. The background shows a blurred urban scene with traffic lights and buildings. The text is arranged around the central image, with the 'ELLE' logo at the top and various headlines and teasers throughout.

ELLE
ITALIA
Weekly

Christmas time
WISH LIST
120
IDEE REGALO
DA FARE
e DA CHIEDERE

I SUPERGRIFFATI
DA QUANDO I VESTITI
SONO I MIGLIORI
AMICI DEI RAGAZZI?

**DAISY
RIDLEY**
COME
SOPRAVVIVERE
AL SUCCESSO

**ROSSO
DI GIORNO
E PIUMINI
DA SERA**

MIGRANTI CLIMATICI
GENTE CHE SCAPPA PER IL GLOBAL WARMING

HILARY RHODA

elle.it

9 771120 459224

Misuzu Miyake

www.art-dept.com

Art Department



Misuzu Miyake

www.art-dept.com

Art Department



Cappa di lana
con maxi sciarpa,
Dolce&Gabbana.
Nella pagina accanto
Trench di nappa (2.980
euro) e, sul braccio,
cappotto double di lana
con collo di visone
(2.150 euro), tutto
Ermanno Scervino; gonna
midi d'ecopelle a pieghe,
Luisa Spagnoli (230
euro), stivali Hermès.
IDEA BEAUTY
Per un trucco intenso
ma minimal, perfetti i
colori di Baroque Lights
Holiday Collection
di Dolce & Gabbana
Beauty.

MICHAEL SANDERS

Misuzu Miyake

www.art-dept.com

Art Department



Misuzu Miyake

www.art-dept.com

Art Department



Cappotto in lana d'alpaca con maxi cappuccio (840 euro) e giacca di lana stretch (710 euro), tutto Tagliatore 0205; pullover di lana (350 euro) e gonna longuette (440 euro), tutto Cédric Charlier; cappello di feltro Marzi Firenze (148 euro), borsa di pelle con nappa Il Bisonte (495 euro).
Nella pagina accanto
Giacca di lana e colone pied-de-coq, con profili a contrasto e bottoni dorati, Claudie Pietrol (195 euro).
IDEA BEAUTY
Sul viso, protezione efficace in città: City Block Sheer Spf 25 di Clinique.

Misuzu Miyake

www.art-dept.com

Art Department



Misuzu Miyake

www.art-dept.com

Art Department



Misuzu Miyake

www.art-dept.com

Art Department



Misuzu Miyake

www.art-dept.com

Art Department



Misuzu Miyake

www.art-dept.com

Art Department



Misuzu Miyake

www.art-dept.com

Art Department



Misuzu Miyake

www.art-dept.com

Art Department



Misuzu Miyake

www.art-dept.com

Art Department



Misuzu Miyake

www.art-dept.com

Art Department



Misuzu Miyake

www.art-dept.com

Art Department



Misuzu Miyake

www.art-dept.com

Art Department



Misuzu Miyake

www.art-dept.com

Art Department



Misuzu Miyake

www.art-dept.com

Art Department



Misuzu Miyake

www.art-dept.com

Art Department



Misuzu Miyake

www.art-dept.com

Art Department



Misuzu Miyake

www.art-dept.com

Art Department



Misuzu Miyake

www.art-dept.com

Art Department



Misuzu Miyake

www.art-dept.com

Art Department



Misuzu Miyake

www.art-dept.com

Art Department



Misuzu Miyake

www.art-dept.com

Art Department



Misuzu Miyake

www.art-dept.com

Art Department



Misuzu Miyake

www.art-dept.com

Art Department



Misuzu Miyake

www.art-dept.com

Art Department



Misuzu Miyake

www.art-dept.com

Art Department



Misuzu Miyake

www.art-dept.com

Art Department



Misuzu Miyake

www.art-dept.com

Art Department



Misuzu Miyake

www.art-dept.com

Art Department



Misuzu Miyake

www.art-dept.com

Art Department



Misuzu Miyake

www.art-dept.com

Art Department



Misuzu Miyake

www.art-dept.com

Art Department



Misuzu Miyake

www.art-dept.com

Art Department



Misuzu Miyake

www.art-dept.com

Art Department



Misuzu Miyake

www.art-dept.com

Art Department



Misuzu Miyake

www.art-dept.com

Art Department



Misuzu Miyake

www.art-dept.com

Art Department



Misuzu Miyake

www.art-dept.com

Art Department



Misuzu Miyake

www.art-dept.com

Art Department



Misuzu Miyake

www.art-dept.com

Art Department



Misuzu Miyake

www.art-dept.com

Art Department



Misuzu Miyake

www.art-dept.com

Art Department



Misuzu Miyake

www.art-dept.com

Art Department



Misuzu Miyake

www.art-dept.com

Art Department



Misuzu Miyake

www.art-dept.com

Art Department



Photographed by David Bellemere Styled by Long Nguyen

274

275

Misuzu Miyake

www.art-dept.com

Art Department



Misuzu Miyake

www.art-dept.com

Art Department



Misuzu Miyake

www.art-dept.com

Art Department



Misuzu Miyake

www.art-dept.com

Art Department



Misuzu Miyake

www.art-dept.com

Art Department



Misuzu Miyake

www.art-dept.com

Art Department



Jacquard jacket, \$5,895,
and pant, \$1,295,
DOLCE & GABBANA,
dolcegabbana.com. Silk
printed shirt, \$1,190,
MARNI, marni.com.
Palladium brass and blue
acrylic hoops,
\$550, BALENCIAGA,
balenciaga.com.

Misuzu Miyake

www.art-dept.com

Art Department



Twist tabard, \$1,450, and
cropped trouser, \$1,190,
MARINA MOSCONE,
marinamoscone.com.
Flocked jersey gloves,
price upon request,
ROSIE ASSOULIN,
rosieassoulin.com.
Palladium brass and blue
acrylic hoops,
\$550, **BALENCIAGA**,
balenciaga.com.

Misuzu Miyake

www.art-dept.com

Art Department



Misuzu Miyake

www.art-dept.com

Art Department



Misuzu Miyake

www.art-dept.com

Art Department



Blue painted velvet
pantights, \$2,750, blue
painted velvet stretch
dress, \$3,100, and
palladium brass and
blue acrylic hoops,
\$550, **BALENCIAGA**,
balenciaga.com.

Misuzu Miyake

www.art-dept.com

Art Department



Lady black and cream
silk satin belted dress,
\$2,395, **SIMONE ROCHA**,
bergdorfgoodman.com.
Black tulle bib with flower
embroidery, price upon
request, **SIMONE ROCHA**,
simonerocha.com.
Steel mule in basket,
\$655, **BROTHER VELLIES**,
brothervellies.com.
Elsa Peretti cabochon
ring in 18-karat gold
with green jade, \$2,800,
TIFFANY & CO.,
tiffany.com. Brass and
wood bead Prime
earrings, \$75, **EDAS**,
edasjewels.com.

SPRING 2019 114 DUJOUR.COM

Misuzu Miyake

www.art-dept.com

Art Department



Tropical green ornamental
flower lace long-sleeve,
high-neck gown
with flared cuffs and all-
over ruffle inserts, price
upon request, GUCCI,
gucci.com. Crystal Lotus
mule in yellow satin,
\$850, AQUAZZURA,
aquazzura.com. Bouton
d'or pendant with
chrysoprase, onyx, and
diamonds set in 18-karat
yellow gold, \$43,000,
and earrings, \$29,300,
VAN CLEEF & ARPELS,
vancleefarpels.com.

Misuzu Miyake

www.art-dept.com

Art Department



Multicolor floral printed
silk dress, \$4,950,
VERSACE, versace.com.
Cotton printed shirt, \$650,
MARNI, marni.com. Black
leather belt with
metallic square buckle,
\$1,050, **ROGER VIVIER**,
rogervivier.com.
Crystal Lotus mule in
emerald green satin,
\$850, **AQUAZZURA**,
aquazzura.com.

Model: Emmy Rappe
at IMG. Hair: Gianluca
Mandelli at Art
Department. Makeup:
Misuzu Miyake at Art
Department. Manicure:
Jackie Saulsbery at
Factory Downtown.

Misuzu Miyake

www.art-dept.com

Art Department

FASHION

SHORE THING

OUR MODEL IS DRESSED IN THE SEASON'S LATEST COLLECTIONS AND TAKES BEACH FUN TO A NEW LEVEL.

PHOTOGRAPHER HELEN ERIKSSON
STYLIST LEX ROSE BOIARD
MODEL ALX ANGJELI @ THE LIONS
HAIR STYLIST YOSUKE MIURA USING ORIBE
MAKE-UP ARTIST MISUZU MIYAKE USING LAURA MERCIER
POST-PRODUCTION AMANDA SPERRY
PRODUCTION ALEXEY GALETSKIY PRODUCTIONS

BALENCIAGA
Yellow and blue 'MR. Bouquet
'Athlete' dress, 10,320,000
Blue polka-dot 'MIL FLORES
Panties', 10,420,000
MONDSTO
Cama Special Edition Black
South Sea Cultural Pearl Set,
Price on request
EMILIO CAVALINI
Shirley: Price on request

48 AUGUST 2018 > STYLE < AUGUST 2018 49

Misuzu Miyake

www.art-dept.com

Art Department



Misuzu Miyake

www.art-dept.com

Art Department



Misuzu Miyake

www.art-dept.com

Art Department



Misuzu Miyake

www.art-dept.com

Art Department



Misuzu Miyake

www.art-dept.com

Art Department



Misuzu Miyake

www.art-dept.com

Art Department



Misuzu Miyake

www.art-dept.com

Art Department



Misuzu Miyake

www.art-dept.com

Art Department



Misuzu Miyake

www.art-dept.com

Art Department



Misuzu Miyake

www.art-dept.com

Art Department



Misuzu Miyake

www.art-dept.com

Art Department



Misuzu Miyake

www.art-dept.com

Art Department



Misuzu Miyake

www.art-dept.com

Art Department



FROM LEFT
Barbara wears
Jumpsuit and earrings
Tom Ford
Najiah wears
Dress Adam Selman

Statement dressing with bold accents defines the look of now—where femininity never looked this new!

Photographs by SARAI MARI Fashion by LILLI MILLHISER

Misuzu Miyake

www.art-dept.com

Art Department



Misuzu Miyake

www.art-dept.com

Art Department



Misuzu Miyake

www.art-dept.com

Art Department



Misuzu Miyake

www.art-dept.com

Art Department



Eres bodysuit, eresparis.com;
David Yurman diamond necklace and
diamond rings, available at Bal Harbour
Shops, davidyurman.com.

154 venicemagftl.com

Misuzu Miyake

www.art-dept.com

Art Department



Calvin Klein chemise, available at Aventura Mall, calvinklein.com; Tiffany & Co. platinum necklace with diamonds, available at Aventura Mall, tiffany.com; Bulgari white gold necklace with diamonds, available at Bal Harbour Shops, bulgari.com.

venicemag.it 149

Misuzu Miyake

www.art-dept.com

Art Department



David Yurman white gold necklace with diamonds, white gold ring with diamonds and white gold bracelet with diamonds, available at Bal Harbour Shops, davidyurman.com.

Photographer: Takahiro Ogawa

Stylist: Seppo Tirabassi

Hair: Yukiko Tajima

Makeup: Misuzu Miyake using MAC Cosmetics

Photo assistants: Hayato Takahashi and Vanessa Rojo de la Vega

Model: Celia Becker/One Management

Producer: Annie Campbell/Altered Agency

Shot on location at The Marmara Park Avenue in New York City.

venicemagf1.com 157

Misuzu Miyake

www.art-dept.com

Art Department



Misuzu Miyake

www.art-dept.com

Art Department



Misuzu Miyake

www.art-dept.com

Art Department



Misuzu Miyake

www.art-dept.com

Art Department



Misuzu Miyake

www.art-dept.com

Art Department



Misuzu Miyake

www.art-dept.com

Art Department



Misuzu Miyake

www.art-dept.com

Art Department



Misuzu Miyake

www.art-dept.com

Art Department



Misuzu Miyake

www.art-dept.com

Art Department



Misuzu Miyake

www.art-dept.com

Art Department



Misuzu Miyake

www.art-dept.com

Art Department



Misuzu Miyake

www.art-dept.com

Art Department



Misuzu Miyake

www.art-dept.com

Art Department



Misuzu Miyake

www.art-dept.com

Art Department



Misuzu Miyake

www.art-dept.com

Art Department



Misuzu Miyake

www.art-dept.com

Art Department



Misuzu Miyake

www.art-dept.com

Art Department



Misuzu Miyake

www.art-dept.com

Art Department



Misuzu Miyake

www.art-dept.com

Art Department



Misuzu Miyake

www.art-dept.com

Art Department



自由な発想を楽しむ

アートのようなプリントブラウスで感性を高める。
ブラウス ¥49,000 / Comme des Garçons
(コム デ ギャルソン) ヘアバンド ¥63,000
(参考価格) / Missoni (三喜商事) ピアス
¥9,200 / Bijou R.I (ビジュー アルアイ)

148

pussycat meow
世界が注目！
水原希子というインスピレーション

モデル、女優、クリエイター……さまざまな顔を持ち、海外からも注目を集める水原希子。
しなやかでありながら独自の感性を持ち、かつ発信力のある希有な存在は
まさにポップアイコン。今回の撮影では自身でヴィジュアルもセレクト。
ポップなものが子どもの頃から好きだったという水原希子のポップワールドへ！

Photos: Monika Mogi

Numéro TOKYO 148

Misuzu Miyake

www.art-dept.com

Art Department



センシュアルな誘惑

アシンメトリなシルエットのワンショルダー
ドレスは抽象画のようなプリントで存在感アッ
プ。ドレス ¥389,000 / Marc Jacobs (マー
ク ジェイコブス カスタマーセンター) ピアス
¥19,000 (参考価格) / Kenzo (ケンゾーパ
リ ジャパン) シューズ ¥134,000 / Jimmy
Choo (ジミーチュウ) プレスレット タイツ/
スタイリスト私物

142 Numéro TOKYO

Misuzu Miyake

www.art-dept.com

Art Department



Misuzu Miyake

www.art-dept.com

Art Department



グルーヴを感じて

フラワープリントとドットプリントをシンクロ。グラフィックが躍立つシルエットで魅了する。トップ ¥103,500 / Richard Quinn (ドーバー ストリート マーケット ギンザ) パンツ ¥67,000 / Palomo Spain (グレイプヴァイン バイ ケイスリー) サンドル ¥155,000 / Christian Louboutin (クリスチャン ルブタン ジャパン) ヘアバンド イヤリング/ともにスタイリスト私物

151 Numéro TOKYO

Misuzu Miyake

www.art-dept.com

Art Department



あえて真逆が全部クール！

ボリュームたっぷりのオーバーサイズが可愛いガウンスタイルのコート。ロイヤルブルー1色の深いまでのコートを素肌に纏い、ボトムにはあえて奇抜なグラフィティのレギンスを。このミックス感こそが、今季のバーバリーのムード！ コート¥460,000 レギンス¥50,000 パンプス¥78,000（すべて予定価格）／Burberry（バーバリー・ジャパン）

Misuzu Miyake

www.art-dept.com

Art Department



Misuzu Miyake

www.art-dept.com

Art Department



トレンチコートをいま着るなら

トレンチコートも、オーバーサイズやボ
リュームショルダーで、イメージを一新。90s
レイバーを彷彿とさせるユニークなスタイルは、
ビッグバッグで上品にまとめて。トレンチコ
ート ¥290,000 グリーントール ¥86,000
オレンジニット ¥78,000 レギンス ¥50,000
バッグ ¥220,000 (すべて予定価格) /
Burberry (バーバリー・ジャパン)

Misuzu Miyake

www.art-dept.com

Art Department



古きものと新しきもの

これぞ老舗バーバリー!という正統派ジャケットに合わせたのが、チェックをびっくりするほど大胆にアレンジしたインパクト大なグラフィティのレギンス。正統派バッグを持って、いならずらにミックス感を演出して。ジャケット ¥185,000 カットソー ¥46,000 レギンス ¥50,000 バッグ ¥175,000 (すべて予定価格) / Burberry (バーバリー) ジャパン

Misuzu Miyake

www.art-dept.com

Art Department



バーバリーガールのあり方

オールレッド×バーバリーチェックという新しいスタイル。スポーティかつトロロなパンツが、コートを引き立てる。バーバリーガールの証し「バーバリーチェック」を纏ってポップに着こなそう！ コート¥320,000 ニット¥78,000 パンツ¥68,000 キャップ¥37,000 パンプス¥78,000 (すべて予定価格) / Burberry (バーバリー・ジャパン)

Hair: Yusuke Miura
Makeup: Misuzu Miyake
Casting: Seiko Watanabe
Fashion Assistant: Mariko Tase
Fashion Editor: Aika Kiyohara

168 Numéro TOKYO

Misuzu Miyake

www.art-dept.com

Art Department



Misuzu Miyake

www.art-dept.com

Art Department



Misuzu Miyake

www.art-dept.com

Art Department



Misuzu Miyake

www.art-dept.com

Art Department

PIBE



FREE BY NATURE

PHOTOGRAPHY SARAI MARI
STYLING MIMI KIM

Misuzu Miyake

www.art-dept.com

Art Department



Misuzu Miyake

www.art-dept.com

Art Department



Misuzu Miyake

www.art-dept.com

Art Department



Misuzu Miyake

www.art-dept.com

Art Department

A Real Edge

Berbagai aksesoris *street* yang *loud* bisa menjadi aksentuasi elegan pada siluet konvensional. Aksesoris berelemen *metal* hingga atraksi motif dan detail lipit, menjadi injeksi tren di yang dominan.

Stylis: DONALD HICKS Fotografi: LAURA ROSE

Gaun, Ports 1961.
Anting, Lulu Frost.
Jaket, Lie Sang Bong.
Cincin, Larulcci.

118 JULI 2014

Misuzu Miyake

www.art-dept.com

Art Department



Misuzu Miyake

www.art-dept.com

Art Department



Oversized coat, Céline
Coat, Pleats please
by Issey Miyake
Sabuk, Ports 1961
Sepatu, Kenzo

JULI 2014 119

Misuzu Miyake

www.art-dept.com

Art Department



Gaun, Pleats please
by Issey Miyake
Kalung, Ben-Amin
Sepatu, Céline

JULI 2014 121

Misuzu Miyake

www.art-dept.com

Art Department



Misuzu Miyake

www.art-dept.com

Art Department



Misuzu Miyake

www.art-dept.com

Art Department



Misuzu Miyake

www.art-dept.com

Art Department



Misuzu Miyake

www.art-dept.com

Art Department



Misuzu Miyake

www.art-dept.com

Art Department



Misuzu Miyake

www.art-dept.com

Art Department



Misuzu Miyake

www.art-dept.com

Art Department



Misuzu Miyake

www.art-dept.com

Art Department



Misuzu Miyake

www.art-dept.com

Art Department



Misuzu Miyake

www.art-dept.com

Art Department



Misuzu Miyake

www.art-dept.com

Art Department



Misuzu Miyake

www.art-dept.com

Art Department



Misuzu Miyake

www.art-dept.com

Art Department



Misuzu Miyake

www.art-dept.com

Art Department

秋のファッション大特集 新垣結衣、最高の秋ファッションとの巡り合い / A.B.C-Z 河合郁人

NYLON

ONLINE
おしゃれ
スクラップ
マガジン

JAPAN
[ナイロン ジャパン]

cover girl
新垣結衣
美しすぎる
autumn angel

contents
新垣結衣からナイロニスタに捧ぐ
秋のファッションストーリー
WORLD SNAP @stockholm street
新垣結衣、90sの風に吹かれて
トレンドガールズのスタイルサンプル25
ナイロニスタ 56人の秋のおしゃれ速報
中条あやみ、ノスタルジックガール
CHANEL / miu miu / GUCCI
MARC JACOBS / SONIA RYKIEL
おしゃれアイコンになりきりヘアメイク

I'm lovin' charadinate
kawaiiのスタンダード
#キャラディネート
大特集

DEAR GIRL

この秋、イチバン最初なにが欲しい?

10
OCT 2015
毎月28日発売
NYLON.JP

Misuzu Miyake

www.art-dept.com

Art Department



Misuzu Miyake

www.art-dept.com

Art Department



Misuzu Miyake

www.art-dept.com

Art Department



Misuzu Miyake

www.art-dept.com

Art Department



Misuzu Miyake

www.art-dept.com

Art Department

永久保存版 ナイロニスタ HAIR カタログ / 水原希子、夏のビューティフルガール

NYLON

ONLINE
おしゃれ
スクラップ
マガジン

JAPAN
[ナイロン ジャパン]

contents
今、流行ってるストリートヘア大特集
ボブ/ショート/ミディアム/ロング
ワールドitヘア SNAP
NEW YORK LONDON PARIS
MADRID MILAN SEOUL
BANGKOK TAIPEI
It girlの使える夏アイテムをpin!
夢見る夏のコスメとボーチ
中条あやみのアイコンニックなストリート
簡単おしゃれな最新ヘアアレンジ
夏のkawaii美容プロダクト大解剖

special issue
水原希子
サマーストリート
STYLE大特集

new my hair

ヘアスタイル、ちょっと変えてみない?

8
AUG 2015
毎月28日発売
NYLON.JP

Misuzu Miyake

www.art-dept.com

Art Department



Misuzu Miyake

www.art-dept.com

Art Department



Misuzu Miyake

www.art-dept.com

Art Department



Misuzu Miyake

www.art-dept.com

Art Department



Misuzu Miyake

www.art-dept.com

Art Department



Misuzu Miyake

www.art-dept.com

Art Department



Misuzu Miyake

www.art-dept.com

Art Department



Misuzu Miyake

www.art-dept.com

Art Department



Misuzu Miyake

www.art-dept.com

Art Department



Misuzu Miyake

www.art-dept.com

Art Department



Misuzu Miyake

www.art-dept.com

Art Department



Misuzu Miyake

www.art-dept.com

Art Department



Misuzu Miyake

www.art-dept.com

Art Department



Misuzu Miyake

www.art-dept.com

Art Department



Misuzu Miyake

www.art-dept.com

Art Department



Misuzu Miyake

www.art-dept.com

Art Department



Misuzu Miyake

www.art-dept.com

Art Department



Misuzu Miyake

www.art-dept.com

Art Department



Misuzu Miyake

www.art-dept.com

Art Department



Misuzu Miyake

www.art-dept.com

Art Department



Misuzu Miyake

www.art-dept.com

Art Department



Misuzu Miyake

www.art-dept.com

Art Department



Misuzu Miyake

www.art-dept.com

Art Department



Misuzu Miyake

www.art-dept.com

Art Department



Misuzu Miyake

www.art-dept.com

Art Department



Misuzu Miyake

www.art-dept.com

Art Department



Misuzu Miyake

www.art-dept.com

Art Department



Misuzu Miyake

www.art-dept.com

Art Department



Misuzu Miyake

www.art-dept.com

Art Department



Misuzu Miyake

www.art-dept.com

Art Department



Misuzu Miyake

www.art-dept.com

Art Department



Misuzu Miyake

www.art-dept.com

Art Department



Misuzu Miyake

www.art-dept.com

Art Department



Misuzu Miyake

www.art-dept.com

Art Department



Misuzu Miyake

www.art-dept.com

Art Department



Misuzu Miyake

www.art-dept.com

Art Department



Misuzu Miyake

www.art-dept.com

Art Department



Misuzu Miyake

www.art-dept.com

Art Department



Misuzu Miyake

www.art-dept.com

Art Department



Misuzu Miyake

www.art-dept.com

Art Department



Misuzu Miyake

www.art-dept.com

Art Department



Misuzu Miyake

www.art-dept.com

Art Department



Misuzu Miyake

www.art-dept.com

Art Department



Misuzu Miyake

www.art-dept.com

Art Department



Misuzu Miyake

www.art-dept.com

Art Department



Misuzu Miyake

www.art-dept.com

Art Department



Misuzu Miyake

www.art-dept.com

Art Department



Misuzu Miyake

www.art-dept.com

Art Department



Misuzu Miyake

www.art-dept.com

Art Department



Misuzu Miyake

www.art-dept.com

Art Department



Misuzu Miyake

www.art-dept.com

Art Department



Misuzu Miyake

www.art-dept.com

Art Department



Misuzu Miyake

www.art-dept.com

Art Department



Misuzu Miyake

www.art-dept.com