

# Art Department

GOAT



Author: a setting by SAM FARMORE 2022, photo by ANGEL CHEN 2022, models by NATY LARZ 2022, and makeup by ANDREAS 2022.

GOAT



GOAT



GOAT



## Nancy Sea Siler

[www.art-dept.com](http://www.art-dept.com)

# Art Department

GOAT



Witch is wearing a hat by HELMUT LANG 1997, pants by CANALI GREEN 2005, accessories by A-COLD-WALLZ 2018, a beanie by GUCCI 2002, and a bag by CHARLES JEFFREY LOVEBIRD 2001.

GOAT



KIM MEE HYE  
Antwerp

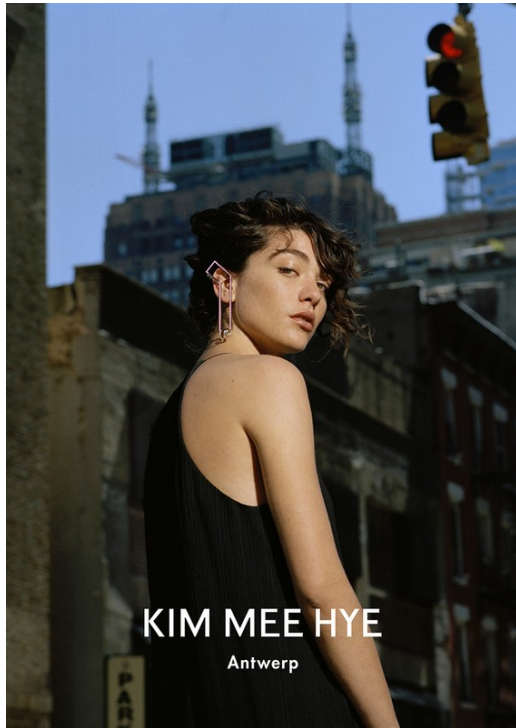


KIM MEE HYE  
Antwerp

## Nancy Sea Siler

[www.art-dept.com](http://www.art-dept.com)

# Art Department



Nancy Sea Siler

[www.art-dept.com](http://www.art-dept.com)



# Art Department



GOAT



Photo: Styling by SAM BROWN (2015), Photo by GUY AROCHA (2015), Photo by ALEXANDER MCCORMICK (2016), Makeup by MARTIN AJU (2017) and VIVIANE WESTWOOD (2018). Hair by TONY FALCO (2017) and employees by FLORENTINE (2018).

Nancy Sea Siler

[www.art-dept.com](http://www.art-dept.com)

# Art Department



Nancy Sea Siler

[www.art-dept.com](http://www.art-dept.com)



# Art Department



Nancy Sea Siler

[www.art-dept.com](http://www.art-dept.com)

# Art Department

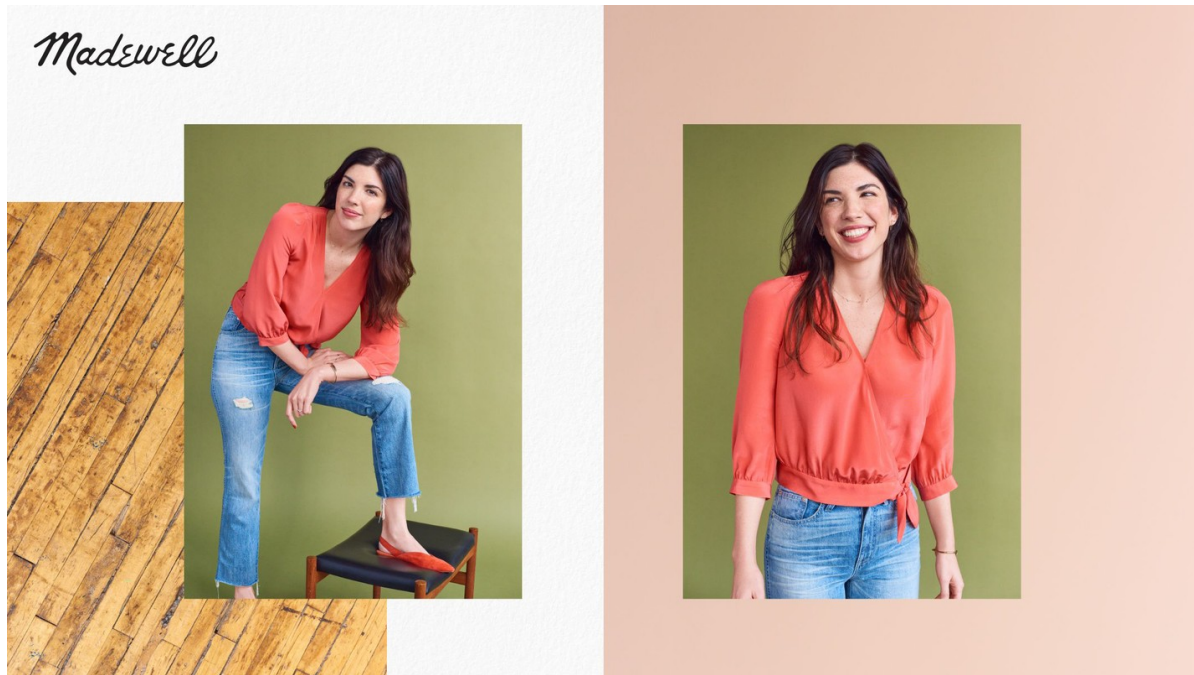


Nancy Sea Siler

[www.art-dept.com](http://www.art-dept.com)



# Art Department



Nancy Sea Siler

[www.art-dept.com](http://www.art-dept.com)



# Art Department



Nancy Sea Siler

[www.art-dept.com](http://www.art-dept.com)