

# Art Department

DEUTSCHE AUSGABE

# ELLE

MÄRZ 2018  
DEUTSCHLAND € 6,00  
ÖSTERREICH € 6,00  
SCHWEIZ SFR 10,00

**DER NEUE GLOW**  
7 TRICKS FÜR DAS WAHRE STRAHLEN

**SPECIAL**  
DAS KOMMT!  
DAS BLEIBT!  
DER GROSSE STYLEGUIDE

**EINE AFFÄRE...**  
MUSS NICHT DAS ENDE DER BEZIEHUNG SEIN

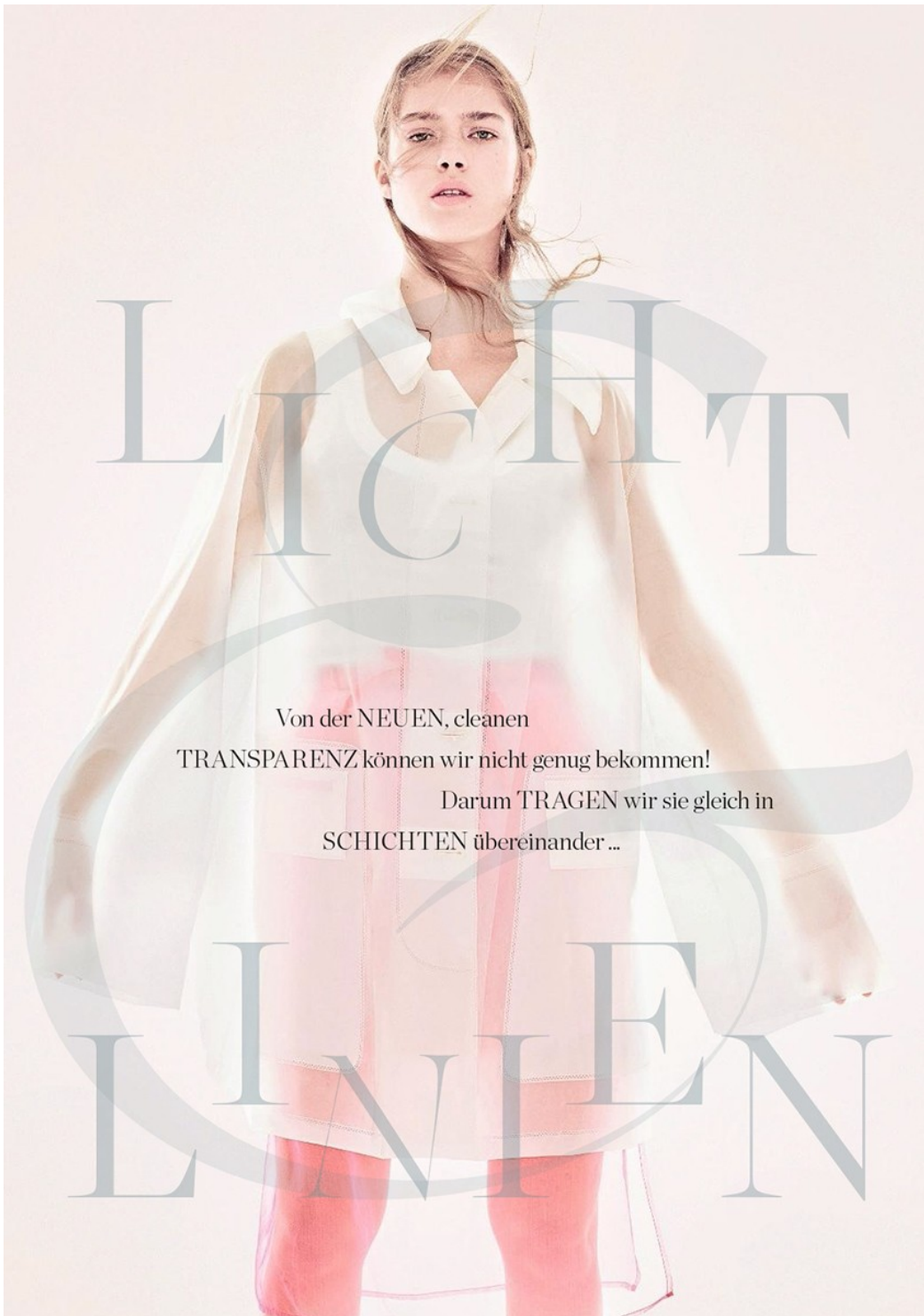
*mode mode*

# MODE

DIE ABSOLUTEN BESTSELLER DER SAISON:  
TRANSPARENZ, PASTELL, POOL-CHIC, BALLERINA

Sandrine Van Slee

# Art Department



Sandrine Van Slee

[www.art-dept.com](http://www.art-dept.com)

# Art Department



**DIESE SEITE:** Weißer Langarmpullover aus Organza, mit Spaghetti-Top, von **KARL LAGERFELD**, um 245 €. Zitronenfarbener Organza-Sweater von **STRENESE**, um 550 €.  
**RECHTE SEITE:** Zartroséfarbene, transparente Bluse mit Lackfinish, um 510 €. Weiße Hose mit überlangem Aufschlag, um 690 €. Alles inkl. Clutch und Kette von **JIL SANDER**. Sandalen: Gianvito Rossi. BH: Wolford

## Sandrine Van Slee

[www.art-dept.com](http://www.art-dept.com)

# Art Department



Sandrine Van Slee

[www.art-dept.com](http://www.art-dept.com)

# Art Department

AN EYE-CATCHING HUE WITH UTILITARIAN ROOTS, SAFETY ORANGE IS EMERGING ON EVERYTHING FROM SLEEK NYLON TO RICH LEATHER, ENSURING THIS SEASON'S ACCESSORIES DON'T FADE INTO THE BACKGROUND

*Photographs by*  
**Ester Grass Vergara**

**range**

**look here**  
THIS PAGE: COAT, \$2,300, BOOTS, \$2,800, BAG, \$2,200, CALVIN KLEIN 205W39NYC.  
OPPOSITE PAGE: SUNGLASSES, PRICE UPON REQUEST, ALTUZARRA.  
ON FACE: AVON ANEW SKIN VINCIBLE DAY LOTION BROAD SPECTRUM SPF 50.

*Fashion Editor: Julia Gall*

Sandrine Van Slee

[www.art-dept.com](http://www.art-dept.com)

# Art Department



## cAn't miss

THIS PAGE: COAT & BELT BAG, PRICES UPON REQUEST, TOD'S.

ON HAIR: KÉRASTASE DISCIPLINE MOUSSE CURL IDÉAL.

OPPOSITE PAGE: JACKET, PRICE UPON REQUEST, BALLY; SKIRT, \$595, R13; BOOTS, \$298, STUART WEITZMAN.

FOR STORES, SEE SHOPPING DIRECTORY.

HAIR & MAKEUP: SANDRINE VAN SLEE FOR CHANEL AT ART DEPARTMENT

MANICURE: KAYO HIGUCHI FOR CHANEL AT BRYAN BANTRY

MODEL: AMELIA RAMI AT HEROES MODEL MANAGEMENT

SET DESIGN: BETTE ADAMS FOR MHS ARTISTS

208

## Sandrine Van Slee

[www.art-dept.com](http://www.art-dept.com)

# Art Department



DEUTSCHE AUSGABE

SEPTEMBER  
2017  
DEUTSCHLAND € 6,00  
ÖSTERREICH € 6,00  
SCHWEIZ SFR 10,00

DIE 19  
TRENDS  
DER  
SAISON  
DAS BRAUCHEN  
SIE JETZT  
WIRKLICH  
(Z.B. CAMEL ...)

ELLE  
LADT EIN  
AUF  
OKTOBERFEST.  
KOMMEN  
SIE MIT!

*Best of*  
GERMANY

VON BAUHAUS-LOOK BIS WANDERLUST:  
WARUM UNSER ZEITGEIST GERADE  
DIE WELT INSPIRIERT

TOPMODEL  
ALISA AHMANN  
IM INTERVIEW

Sandrine Van Slee

[www.art-dept.com](http://www.art-dept.com)

# Art Department



Sandrine Van Slee

[www.art-dept.com](http://www.art-dept.com)



# Art Department



Sandrine Van Slee

[www.art-dept.com](http://www.art-dept.com)

# Art Department



DIESE SEITE: Klassischer Mantel mit steigendem Revers, um 3290 €. Bundfaltenhose, um 990 €. Rollkragenpullover, um 750 €. Alles von RALPH LAUREN COLLECTION. Schuhe: Ralph Lauren. Uhr: Cartier.  
RECHTE SEITE: Klassischer Wollmantel von MARC CAIN, um 480 €. Cashmere-Pullover mit „Fever“-Schriftzug, von ZADIG & VOLTAIRE, um 400 €. Trackpants von IRIS VON ARNIM, um 540 €. Schuhe: Max Mara

## Sandrine Van Slee

[www.art-dept.com](http://www.art-dept.com)

# Art Department



Sandrine Van Slee

[www.art-dept.com](http://www.art-dept.com)

# Art Department



Sandrine Van Slee

[www.art-dept.com](http://www.art-dept.com)

# Art Department



Sandrine Van Slee

[www.art-dept.com](http://www.art-dept.com)

# Art Department



Sandrine Van Slee

[www.art-dept.com](http://www.art-dept.com)

# Art Department



Sandrine Van Slee

[www.art-dept.com](http://www.art-dept.com)

# Art Department



Sandrine Van Slee

[www.art-dept.com](http://www.art-dept.com)



# Art Department



Sandrine Van Slee

[www.art-dept.com](http://www.art-dept.com)

# Art Department



Sandrine Van Slee

[www.art-dept.com](http://www.art-dept.com)

# Art Department



Sandrine Van Slee

[www.art-dept.com](http://www.art-dept.com)

# Art Department



Sandrine Van Slee

[www.art-dept.com](http://www.art-dept.com)

# Art Department



Sandrine Van Slee

[www.art-dept.com](http://www.art-dept.com)

# Art Department



THE ROW  
Langer Mantel aus Seide,  
um 4990 €. Rippstrick-  
Tanktop, um 320 €.  
Anzughose aus Seide,  
um 2590 €. Schmuck:  
Pomellato. Slipper:  
Attilio Giusti Leombruni

## Sandrine Van Slee

[www.art-dept.com](http://www.art-dept.com)

# Art Department



LONGCHAMP  
Mantel aus Lammvelours-  
leder, mit Taillengürtel, um  
1890 €. Ring: Liebeskind.  
Tasche: Longchamp

## Sandrine Van Slee

[www.art-dept.com](http://www.art-dept.com)

# Art Department



Sandrine Van Slee

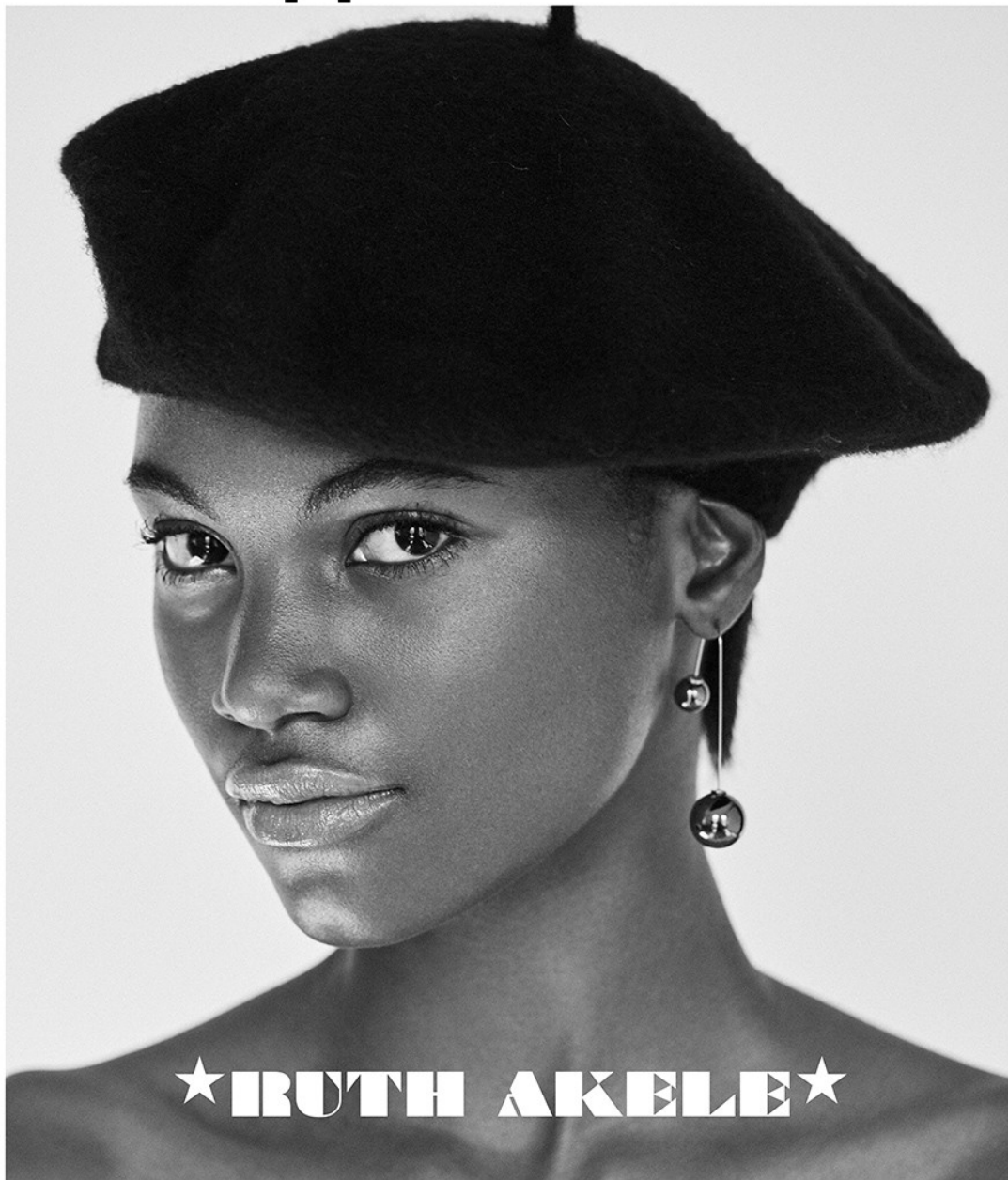
[www.art-dept.com](http://www.art-dept.com)



# Art Department

## Je M'appelle

ZINE 02



Sandrine Van Slee

[www.art-dept.com](http://www.art-dept.com)

# Art Department



Sandrine Van Slee

[www.art-dept.com](http://www.art-dept.com)

# Art Department



Sandrine Van Slee

[www.art-dept.com](http://www.art-dept.com)

# Art Department



Sandrine Van Slee

[www.art-dept.com](http://www.art-dept.com)

# Art Department



Sandrine Van Slee

[www.art-dept.com](http://www.art-dept.com)

# Art Department



Sandrine Van Slee

[www.art-dept.com](http://www.art-dept.com)

# Art Department



Sandrine Van Slee

[www.art-dept.com](http://www.art-dept.com)

# Art Department



Sandrine Van Slee

[www.art-dept.com](http://www.art-dept.com)



# Art Department



Sandrine Van Slee

[www.art-dept.com](http://www.art-dept.com)

# Art Department



Sandrine Van Slee

[www.art-dept.com](http://www.art-dept.com)

# Art Department



Sandrine Van Slee

[www.art-dept.com](http://www.art-dept.com)

# Art Department



Sandrine Van Slee

[www.art-dept.com](http://www.art-dept.com)

# Art Department



Sandrine Van Slee

[www.art-dept.com](http://www.art-dept.com)

# Art Department



Sandrine Van Slee

[www.art-dept.com](http://www.art-dept.com)

# Art Department



Sandrine Van Slee

[www.art-dept.com](http://www.art-dept.com)

# Art Department



Sandrine Van Slee

[www.art-dept.com](http://www.art-dept.com)



# Art Department



Sandrine Van Slee

[www.art-dept.com](http://www.art-dept.com)

# Art Department



Sandrine Van Slee

# Art Department



Sandrine Van Slee

# Art Department



Sandrine Van Slee

[www.art-dept.com](http://www.art-dept.com)

# Art Department



Sandrine Van Slee

[www.art-dept.com](http://www.art-dept.com)

# Art Department



The image shows the cover of the August 2017 issue of ELLE magazine. The cover features a close-up portrait of a woman with light brown hair pulled back, resting her chin on her hand. She is wearing a light blue dress with a vibrant floral and butterfly pattern and a red ribbon at the neckline. A gold watch is visible on her left wrist. The magazine title 'ELLE' is printed in large white letters at the top. The date 'AUGUST 2017' is in the top right. The text 'DEUTSCHE AUSGABE' is on the left. The main headline reads 'TASCHEN FÜRS LEBEN SUPERSCHÖN UND DIE PERFEKTE WERTANLAGE'. Below it, another headline says 'BEST & DRESSED DIE GROSSE ELLE-LISTE DER STILIKONEN 2017'. At the bottom, the slogan 'Be yourself!' is written in a large, elegant script, followed by the text 'HIER KOMMT SIE, DIE NEUE MODE. DIE DESIGNER SETZEN VOLL AUF INDIVIDUALITÄT. WIR AUCH! SCHLUSS MIT PERFEKTIONISMUS'. Pricing information for Germany, Austria, and Switzerland is in the top right, and a barcode is on the right side.

DEUTSCHE AUSGABE

ELLE

AUGUST 2017

DEUTSCHLAND € 6,00  
ÖSTERREICH € 6,00  
SCHWEIZ SFR 10,00

TASCHEN  
FÜRS LEBEN  
SUPERSCHÖN  
UND DIE PERFEKTE  
WERTANLAGE

BEST  
& DRESSED  
DIE GROSSE  
ELLE-LISTE DER  
STILIKONEN 2017

*Be yourself!*

HIER KOMMT SIE, DIE NEUE MODE.  
DIE DESIGNER SETZEN VOLL AUF INDIVIDUALITÄT.  
WIR AUCH! SCHLUSS MIT PERFEKTIONISMUS

Sandrine Van Slee

[www.art-dept.com](http://www.art-dept.com)

# Art Department



EMPORIO ARMANI

Knöchellanger Tweed-  
mantel mit Bow-  
Manschetten und weiter  
Silhouette, um  
1400 €. Stiefeletten:  
Emporio Armani

Sandrine Van Slee

[www.art-dept.com](http://www.art-dept.com)

# Art Department



Sandrine Van Slee

[www.art-dept.com](http://www.art-dept.com)



# Art Department



LUIA CERANO  
Etuikleid mit Trompeten-  
ärmeln, um 300 €.  
Stiefeletten: Gianvito  
Rossi. Uhr: Hermès

Sandrine Van Slee

[www.art-dept.com](http://www.art-dept.com)

# Art Department



FENDI

Transparente Seidengeorgettebluse, um 950 €.  
Body, Preis auf Anfrage.  
Trapezförmiger Midirock aus poliertem Leder, um 3200 €. Stiefel: Fendi

#### STYLINGTIPP

Rot im Komplett-Look darf sinnliche Signale senden – aber dosiert. Heißt: Zur elegant-transparenten Bluse passt ein weiter Rock in Midilänge, aber kein Pencilskirt. Der wiederum (siehe rechts) ist zum lässigen Rolli erlaubt.

## Sandrine Van Slee

[www.art-dept.com](http://www.art-dept.com)

# Art Department



Sandrine Van Slee

[www.art-dept.com](http://www.art-dept.com)

# Art Department



Sandrine Van Slee

[www.art-dept.com](http://www.art-dept.com)

# Art Department



Sandrine Van Slee

[www.art-dept.com](http://www.art-dept.com)

# Art Department



Sandrine Van Slee

[www.art-dept.com](http://www.art-dept.com)

# Art Department



In questa pagina: T-shirt  
**OBESITY & SPEED**,  
boxer **CALVIN KLEIN**  
**UNDERWEAR**, scarpe  
**CONVERSE**. Nella pagina  
accanto: Body **ALEXANDER**  
**WANG**, giacca dello stylist.  
*Hair* Seiji/Wall Group.  
*Make-up* Sandrine Van Slee.  
*Assistente fotografica* Nicolas  
Kern. *Assistenti moda* Robyn  
V. Fernandes & Michael  
Kozak. *Modella* Marloes/  
Next Models, thanks to Beth.  
*Ritocco* Susanne/Taylor Light.  
*Studio* Fast Ashleys.  
*Thanks to* Michael Masse.

## Sandrine Van Slee

[www.art-dept.com](http://www.art-dept.com)

# Art Department



x  
**SCARLET  
FEVER**  
x

x  
CRIMSON,  
CARDINAL,  
FLAME,  
RUBY,  
TOMATO,  
CLARET.  
THIS BOLD,  
FIERY  
HUE DATES  
BACK TO  
CAVE ART,  
AND ITS  
POWER  
ENDURES  
TODAY

x  
PHOTOGRAPHED BY  
PAUL JUNG  
STYLED BY  
JONNY LICHTENSTEIN

## Sandrine Van Slee

[www.art-dept.com](http://www.art-dept.com)



# Art Department



X

**HALSTON HERITAGE**  
*wool coat and asymmetrical gown with belt;*  
[HALSTON.COM](http://HALSTON.COM). OPPOSITE:  
**NARS** Audacious mascara in *Black Moon*; [NARS COSMETICS.COM](http://NARS-COSMETICS.COM). For prices and links to products, go to [more.com/wheretobuy](http://more.com/wheretobuy). ©

X

**HAIR AND MAKEUP:**  
SANDRINE VAN SLEE USING DIORSHOW AND ORIBE HAIR CARE AT ART DEPARTMENT; NAILS: MAYUMI ABUKU USING DIOR VERNIS AT RONA REPRESENTS; PROP STYLIST: SONIA RENTSCH; CASTING: ALINA ZAKAITE; MODEL: ATONG/TRUMP MODELS

X

**WANT TO KNOW MORE ABOUT HOW TO WEAR THIS TREND AT EVERY AGE? TURN TO PAGE 92.**

90  
MORE SEPTEMBER 2013

## Sandrine Van Slee

[www.art-dept.com](http://www.art-dept.com)

# Art Department



Sandrine Van Slee

[www.art-dept.com](http://www.art-dept.com)

# Art Department



**LACOSTE**

Ledershirt mit asymmetrischem Zipper, um 530 Euro. Schmal geschnittene Lederhose um 550 Euro.  
Ring: Saskia Diez. Tasche: Jimmy Choo

Sandrine Van Slee

[www.art-dept.com](http://www.art-dept.com)

# Art Department



Sandrine Van Slee

[www.art-dept.com](http://www.art-dept.com)

# Art Department



## *SLIM-TIPP*

Kombinieren Sie zu einem gerade geschnittenen Mantel einen breiten Gürtel, das formt eine schmale Taille. Reizvolle Alternative: Sie lassen ihn offen stehen – und tragen darunter ein klar geschnittenes, pastellfarbenes Kleid.

## Sandrine Van Slee

[www.art-dept.com](http://www.art-dept.com)

# Art Department



Sandrine Van Slee

[www.art-dept.com](http://www.art-dept.com)

# Art Department



Sandrine Van Slee

[www.art-dept.com](http://www.art-dept.com)

# Art Department



Sandrine Van Slee

[www.art-dept.com](http://www.art-dept.com)



# Art Department



Sandrine Van Slee

[www.art-dept.com](http://www.art-dept.com)

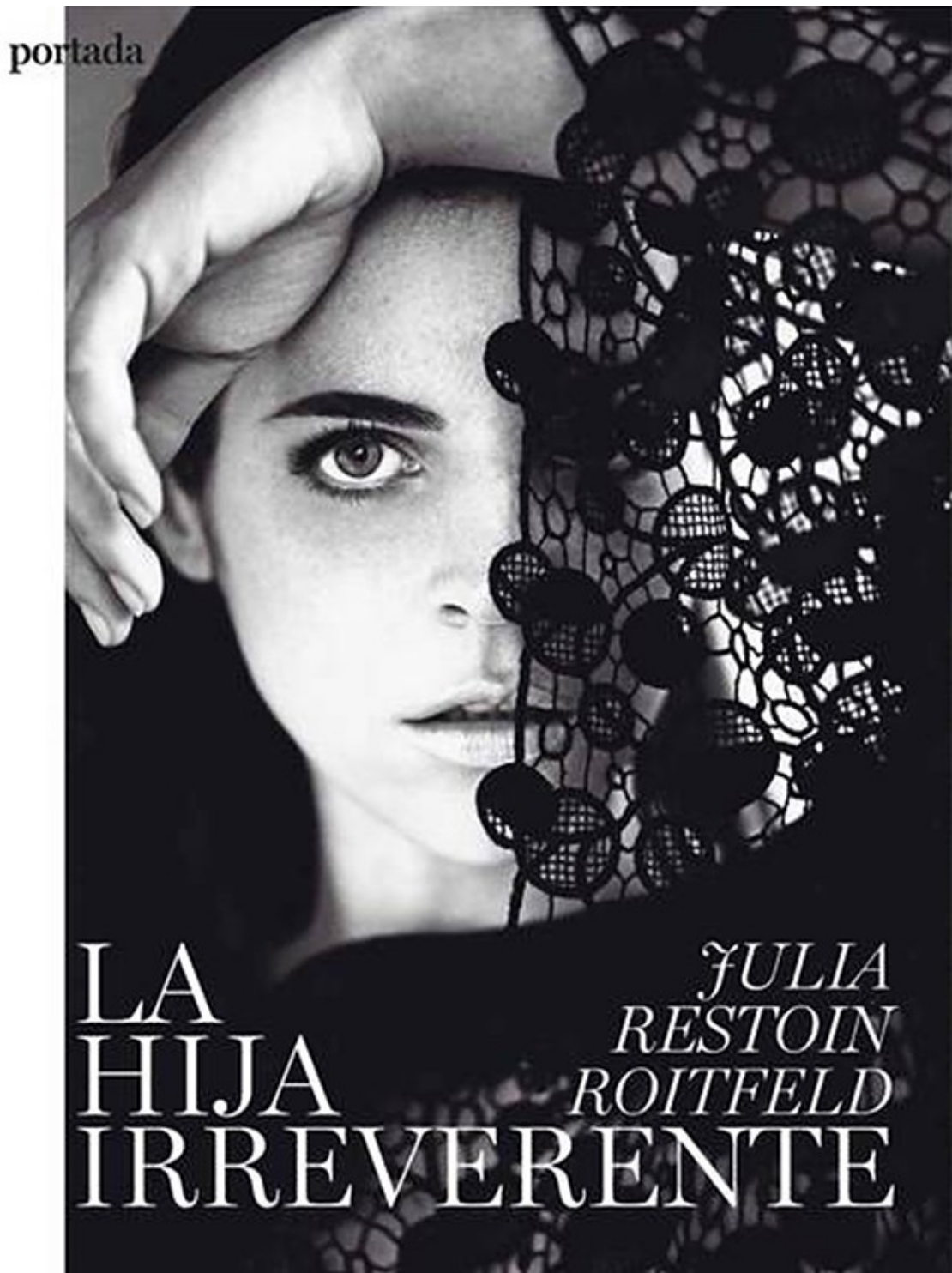
# Art Department



Sandrine Van Slee

[www.art-dept.com](http://www.art-dept.com)

# Art Department



Sandrine Van Slee

# Art Department



Sandrine Van Slee

[www.art-dept.com](http://www.art-dept.com)

# Art Department



Sandrine Van Slee

[www.art-dept.com](http://www.art-dept.com)

# Art Department



## UNWIDERSTEHLICH!

*Egal, ob wir 20 oder 60 Jahre alt sind: Unsere Leidenschaft für Mode wird in jeder Saison neu entfacht. Wir zeigen die schönsten Trend-Looks aus den Herbst-Winter-Kollektionen, raffiniert gestylt für jedes Alter. Lassen Sie sich inspirieren!*

*Fotos: JOSHUA JORDAN Styling: KERSTIN SCHNEIDER*

## Sandrine Van Slee

[www.art-dept.com](http://www.art-dept.com)

# Art Department



## FIFTY SHADES OF GLAMOUR

*Grau macht alt? Ganz falsch: Grau veredelt jeden Stil. Wenn Schnitt, Material und Styling stimmen – und Glanzpunkte gesetzt werden*

Sandrine Van Slee

[www.art-dept.com](http://www.art-dept.com)

# Art Department



DIESE SEITE: Cashmere-pullover von **Allude**, um 390 Euro. Schmal geschnittene Flanellhose von **Fabiana Filippi**, um 295 Euro. Kette: Céline. Armband: Aurélie Bidermann. Schuhe: Church's.

RECHTE SEITE: Wollmantel mit Pattentaschen, um 1780 Euro. Bundfaltenhose, Preis auf Anfrage. Beides von **Stella McCartney**. Feinstrickpullover von Taifun, um 40 Euro. Armband: Ina Beisser. Schuhe: Church's

**STYLING-TIPP**  
Der Teint darf hell, muss aber regelmäßig sein: Ohne Foundation funktioniert Grau also meistens nicht. Schön dazu: Lippen in zartem Rosenholz, kräftig getuschte Wimpern – und silbergraue Haare!

FOTOS: JOSHUA JORDAN STYLING: KERSTIN SCHNEIDER

## Sandrine Van Slee

[www.art-dept.com](http://www.art-dept.com)



# Art Department



*Luftig, transparent und  
lässig: Königinnen des Clean  
Chic lieben die neuen  
Outfits aus FLIESSENDEN*

*STOFFEN. Weil sie  
maximale Bewegungsfreiheit  
schenken – und extrem  
verführerisch sind*

*die neue leichtigkeit*

Fotos: JOSHUA JORDAN Styling: KERSTIN SCHNEIDER

## Sandrine Van Slee

[www.art-dept.com](http://www.art-dept.com)

# Art Department



## STYLINGTIPP



*Lässig-Looks für moderne Feen wirken am schönsten in Weiß oder in raffiniert aufeinander abgestimmten Grau- oder Cremetönen. Auffällige Details – Plissees, Cut-outs – machen weiteren Schmuck überflüssig. Hübsches Finish: perlmuttfarben lackierte Nägel.*

## Sandrine Van Slee

[www.art-dept.com](http://www.art-dept.com)

# Art Department



Sandrine Van Slee

[www.art-dept.com](http://www.art-dept.com)

# Art Department



Sandrine Van Slee

[www.art-dept.com](http://www.art-dept.com)

# Art Department



Sandrine Van Slee

[www.art-dept.com](http://www.art-dept.com)

# Art Department



## Sandrine Van Slee

[www.art-dept.com](http://www.art-dept.com)

# Art Department



Sandrine Van Slee

[www.art-dept.com](http://www.art-dept.com)

# Art Department



## **Une touche de zèbre**

Manteau en peau lainée,  
Boss Hugo Boss.  
T-shirt en coton, Ba&sh.  
Pantalon en  
drap de laine, Maison  
Martin Margiela.  
Sac en vachette imprimée,  
Giuseppe Zanotti.  
Boots en cuir, La Halle.

## **Bordeaux premier cru**

Page de droite, Veste  
et jupe en drap  
de laine, T-shirt en cuir,  
et bottes  
en python, Gucci.

## Sandrine Van Slee

[www.art-dept.com](http://www.art-dept.com)



# Art Department



Sandrine Van Slee

[www.art-dept.com](http://www.art-dept.com)

# Art Department



Sandrine Van Slee

[www.art-dept.com](http://www.art-dept.com)

# Art Department



Sandrine Van Slee

[www.art-dept.com](http://www.art-dept.com)

# Art Department



Sandrine Van Slee

[www.art-dept.com](http://www.art-dept.com)

# Art Department



Sandrine Van Slee

[www.art-dept.com](http://www.art-dept.com)

# Art Department



Sandrine Van Slee

[www.art-dept.com](http://www.art-dept.com)

# Art Department



Sandrine Van Slee

[www.art-dept.com](http://www.art-dept.com)

# Art Department



Sandrine Van Slee

[www.art-dept.com](http://www.art-dept.com)



# Art Department



Sandrine Van Slee

[www.art-dept.com](http://www.art-dept.com)

# Art Department



Sandrine Van Slee

[www.art-dept.com](http://www.art-dept.com)