

Art Department



Sandrine Van Slee

www.art-dept.com

Art Department



Sandrine Van Slee

www.art-dept.com

Art Department



Sandrine Van Slee

Art Department



Sandrine Van Slee

Art Department



Sandrine Van Slee

www.art-dept.com

Art Department



Sandrine Van Slee

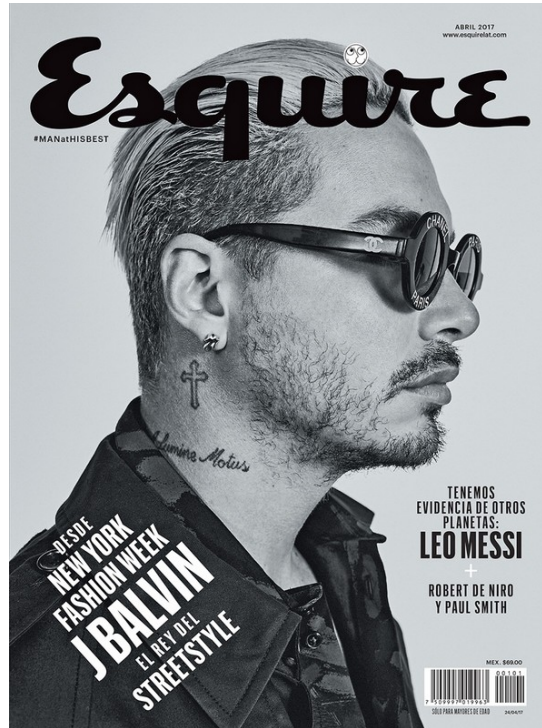
www.art-dept.com

Art Department



Sandrine Van Slee

Art Department



Sandrine Van Slee

Art Department



Sandrine Van Slee

www.art-dept.com

Art Department



Sandrine Van Slee

Art Department



GOOD TIDINGS

COLEHAAN

GREAT SAVINGS TO ALL

50-70% OFF ENTIRE SELECTION*

**Suggested Retail Prices at Cole Haan Outlet Stores*



COLEHAAN



STYLE / Die Mustermänner

TREND

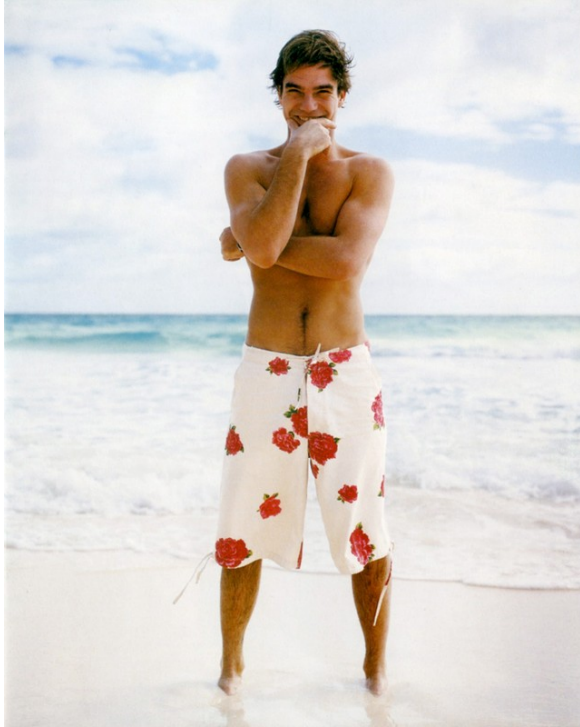
SCHWARZ-WEISS

Das Revival der 90er ist nicht mehr zu übersehen: eine deutliche Hommage an die kühne Ästhetik des ersten Teils des Jahrzehnts sind die schwarz-weißen Looks in vielen Kollektionen. So viel Kontrast war lang nicht mehr

Sandrine Van Slee

www.art-dept.com

Art Department



Sandrine Van Slee

Art Department



Sandrine Van Slee

www.art-dept.com

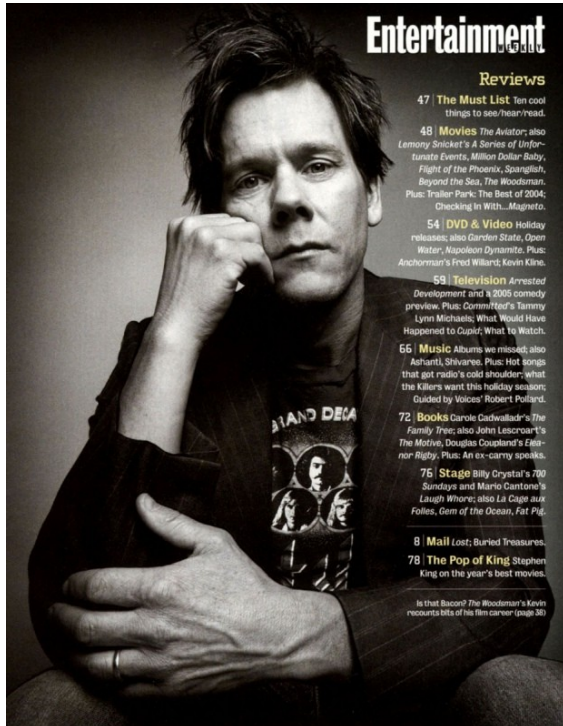
Art Department



Sandrine Van Slee

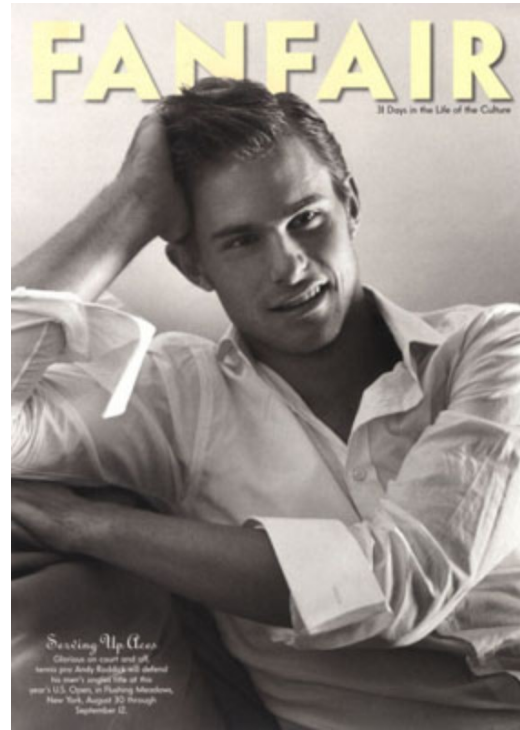
www.art-dept.com

Art Department



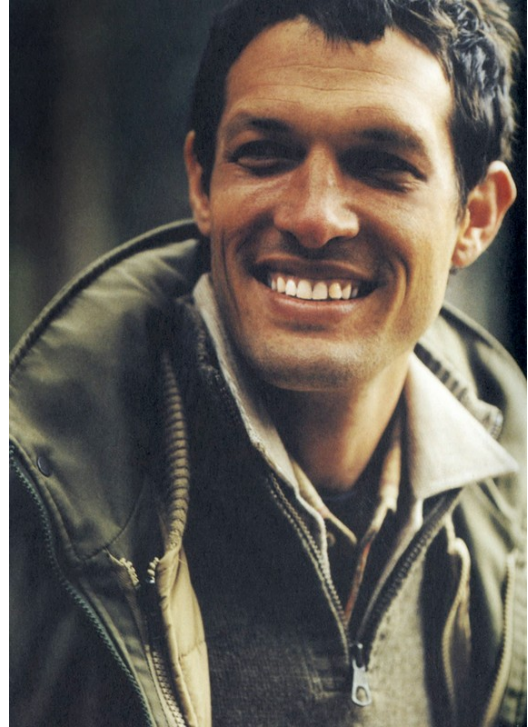
Sandrine Van Slee

Art Department



Sandrine Van Slee

Art Department



Sandrine Van Slee

www.art-dept.com