

Art Department



Sandrine Van Slee

www.art-dept.com

Art Department



Vanity Copertina

LA COSTRUZIONE DI UN UOMO

I modelli che ammira e la mascolinità tossica, il porno, l'amore, la paternità: **ALESSANDRO BORGHI** si mette a nudo come non mai. In una serie e in questa intervista *super*

di SILVIA BOMBINO foto FRANCESCO CARROZZINI servizio MICHAEL PHILOUZE

21 FEBBRAIO 2024

IN CORSA
Alessandro Borghi, 37 anni, è il protagonista di *Strazziera*, dove è il portavoce Rocco Silfredi. La serie è presentata in anteprima mondiale alla 74ª edizione del Festival del Cinema di Berlino e uscirà su Netflix il 6 marzo. Composta da 7 episodi, è stata creata e scritta da Francesca Mameri, ed è diretta da Matteo Rovere, Francesco Carrozzini e Francesca Mazzoleni.

Giacca, camicia e cravatta, **Givenchy**.

34 VANITY FAIR 35

Sandrine Van Slee

www.art-dept.com

Art Department



Sandrine Van Slee

www.art-dept.com

Art Department



Sandrine Van Slee

www.art-dept.com

Art Department



Sandrine Van Slee

www.art-dept.com

Art Department



Sandrine Van Slee

www.art-dept.com

Art Department



Sandrine Van Slee

www.art-dept.com

Art Department



Sandrine Van Slee

www.art-dept.com

Art Department



Sandrine Van Slee

www.art-dept.com

Art Department



Sandrine Van Slee

www.art-dept.com

Art Department



Sandrine Van Slee

www.art-dept.com

Art Department



Sandrine Van Slee

www.art-dept.com

Art Department



Sandrine Van Slee

www.art-dept.com

Art Department



Sandrine Van Slee

www.art-dept.com

Art Department



Sandrine Van Slee

www.art-dept.com

Art Department



Sandrine Van Slee

www.art-dept.com

Art Department



Sandrine Van Slee

www.art-dept.com

Art Department



Sandrine Van Slee

www.art-dept.com

Art Department



Sandrine Van Slee

www.art-dept.com

Art Department



Sandrine Van Slee

www.art-dept.com

Art Department



Sandrine Van Slee

www.art-dept.com

Art Department



Sandrine Van Slee

www.art-dept.com

Art Department



Sandrine Van Slee

www.art-dept.com

Art Department



Sandrine Van Slee

www.art-dept.com

Art Department



Esquire

#MANatHISBEST

ABRIL 2017
www.esquirelat.com

DESDE
NEW YORK
FASHION
WEEK

J BALVIN

EL REY DEL
STREETSTYLE

TENEMOS
EVIDENCIA DE
OTROS PLANETAS:
**LEO
MESSI**

+
ROBERT DE NIRO
Y PAUL SMITH

MEX. \$69.00

0 01101 1

7 4503297 019343

¡SOLICITA AHORA! MIENTRAS SE LEA

2464472

Sandrine Van Slee

www.art-dept.com

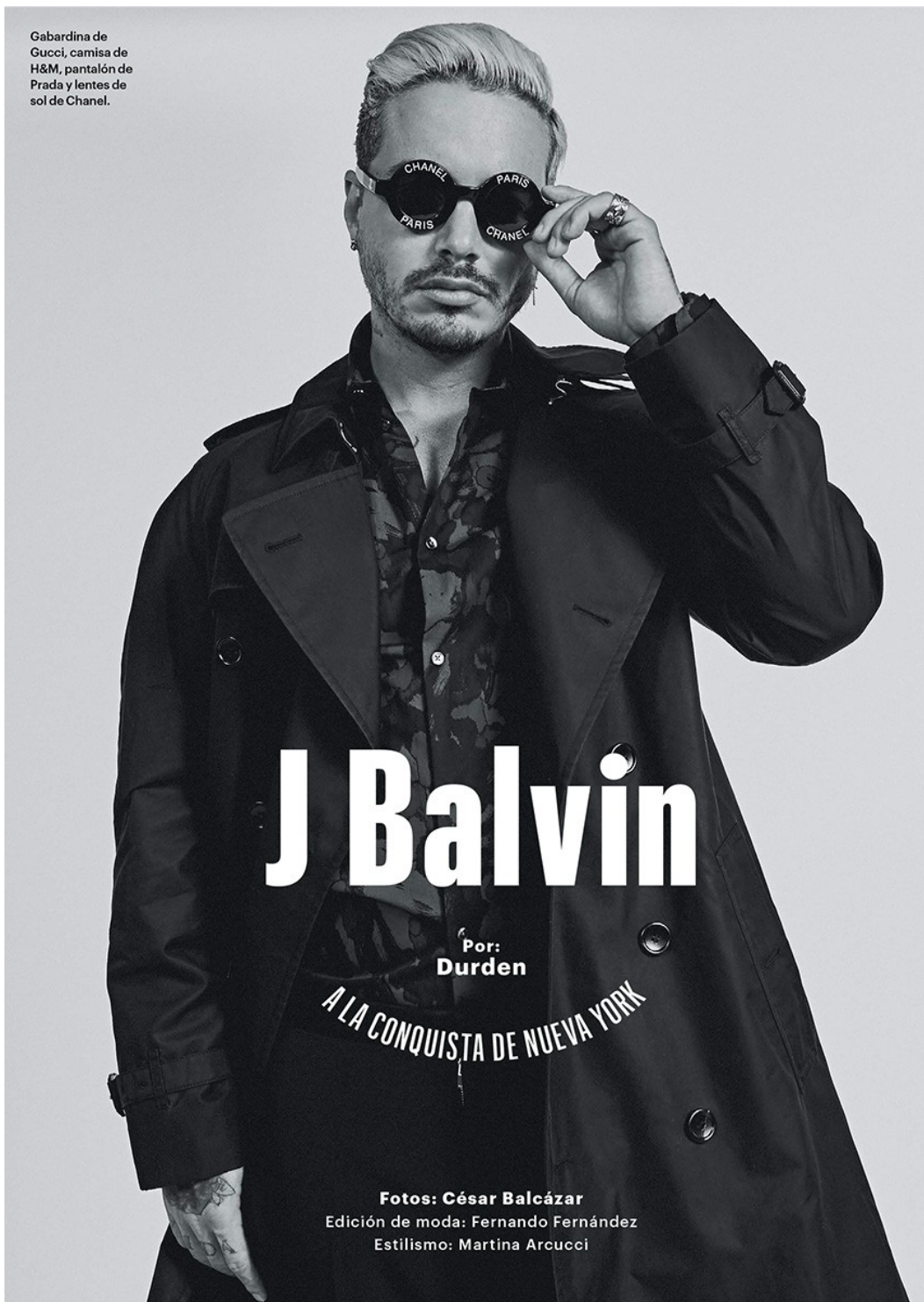
Art Department



Sandrine Van Slee

www.art-dept.com

Art Department



Sandrine Van Slee

www.art-dept.com

Art Department



Sandrine Van Slee

www.art-dept.com

Art Department



Sandrine Van Slee

www.art-dept.com

Art Department



Sandrine Van Slee

www.art-dept.com

Art Department

The New York Times Magazine
NOVEMBER 9, 2003 / SECTION 6

'Tis
the Oscar-scheming, novel-adapting,
release-date-juggling, upper-mid-brow-seducing, period-recreating,
art-budget-breaking,
grown-up-pleasure-making prestige film season.

The Annual Movie Issue

Sandrine Van Slee

www.art-dept.com

Art Department



CÉSAR VEGA
Coffee Entrepreneur

Sandrine Van Slee

www.art-dept.com

Art Department



Sandrine Van Slee

www.art-dept.com

Art Department



GOOD
TIDINGS

COLEHAAN

GREAT
SAVINGS
TO ALL

50-70% OFF
ENTIRE
SELECTION*

**Suggested Retail Prices at
Cole Haan Outlet Stores*

Sandrine Van Slee

www.art-dept.com

Art Department



Sandrine Van Slee

www.art-dept.com

Art Department



► Von links: Anzug, JOOP, 450 Euro. Pullover, BOTTEGA VENETA, 520 Euro.

► Jeansjacke, WRANGLER, 220 Euro. Jeans, WOOLRICH, 150 Euro. Baseballmütze, NEW ERA, 40 Euro. Lederrucksack, TRUSSARDI 1911, 1100 Euro. T-Shirt, AMERICAN APPAREL, 18 Euro.

► Smokingjacke, LAGERFELD, 450 Euro. Hemd, GIVENCHY BY RICCARDO TISCI, 370 Euro. Hose, AGNE, 200 Euro.

► Hemd, POLO RALPH LAUREN, 150 Euro. Jeans, WOOLRICH, 130 Euro. Krawatte, GIVENCHY BY RICCARDO TISCI, 95 Euro. Gürtel, TRUSSARDI 1911, 200 Euro.

► Lederweste, 750 Euro, und Hoodie, 505 Euro, beides PATRIK ERVELL. Längermisshirt, 375 Euro, und Hose, 550 Euro, beides DIOR HOMME.

Februar 2012 - GQ DE 143

Sandrine Van Slee

www.art-dept.com

Art Department



Février 2012 - GQ DE 133

Sandrine Van Slee

www.art-dept.com

Art Department



Sandrine Van Slee

www.art-dept.com

Art Department

STYLE / Die Mustermänner

TREND



SCHLANGEN- LEDER

Der Trend begann vergangenes Jahr in der Frauenmode, nun wird Python- und Boa-Leder auch in Männerkollektionen für Accessoires, Jacken und Mäntel benutzt. Tierfreunde bekommen den Look natürlich auch als Print

► **Van Anks**: Pythonmantel, **HERMÈS**, 14800 Euro. Anzug, **BOSS SELECTION**, 700 Euro. Saftshemd, **TOM FORD**, 320 Euro. Krawatte, **McNEAL**, 40 Euro. Uhr „Flagship Heritage“, **LONGINES**, 1160 Euro

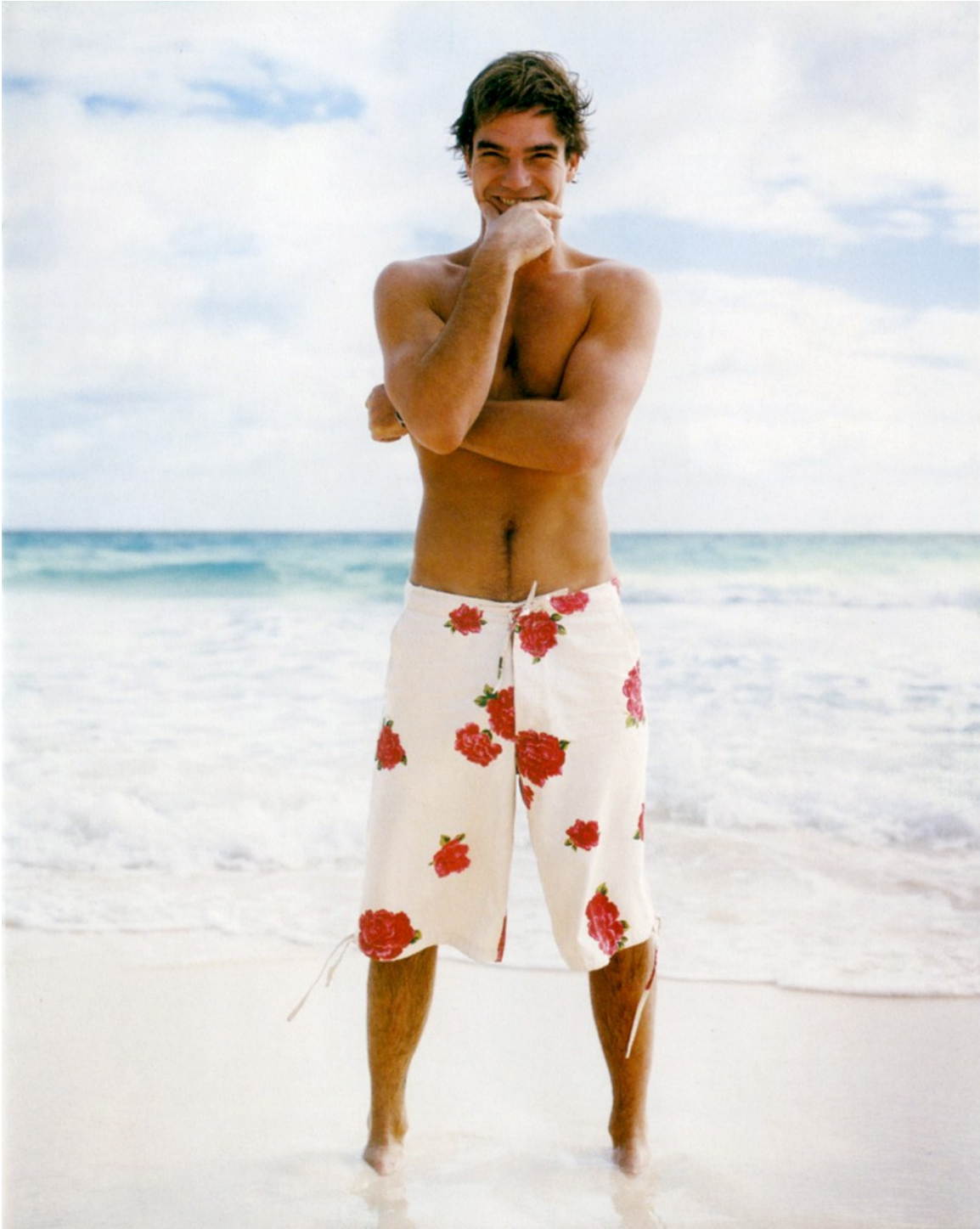
► Blauson mit Pythondruck, **YVES SAINT LAURENT RIVE GAUCHE**, 1290 Euro. Reliësqantopullover, **ETRO**, 125 Euro. Hase, **TRUSSARDI 1911**, 470 Euro

140 GQ.DE - Februar 2012

Sandrine Van Slee

www.art-dept.com

Art Department



Sandrine Van Slee

www.art-dept.com

Art Department



Sandrine Van Slee

www.art-dept.com

Art Department



Sandrine Van Slee

www.art-dept.com

Art Department



Sandrine Van Slee

www.art-dept.com

Art Department



Sandrine Van Slee

www.art-dept.com

Art Department



164 00 НОЯБРЬ 2014

КОЖАНАЯ КУРТКА, СУИСС;
ТОПСТВОВКА ИЗ ХЛОПКА,
ТРИКОТАЖНЫЕ БРЮКИ, ВСЁ
ICEBERG; КОЖАНЫЕ ПЕРЧАТКИ,
ERMEGILDO ZEGNA.

Sandrine Van Slee

www.art-dept.com

Art Department



Sandrine Van Slee

www.art-dept.com

Art Department



Sandrine Van Slee

www.art-dept.com

Art Department



Sandrine Van Slee

www.art-dept.com

Art Department



Sandrine Van Slee

www.art-dept.com

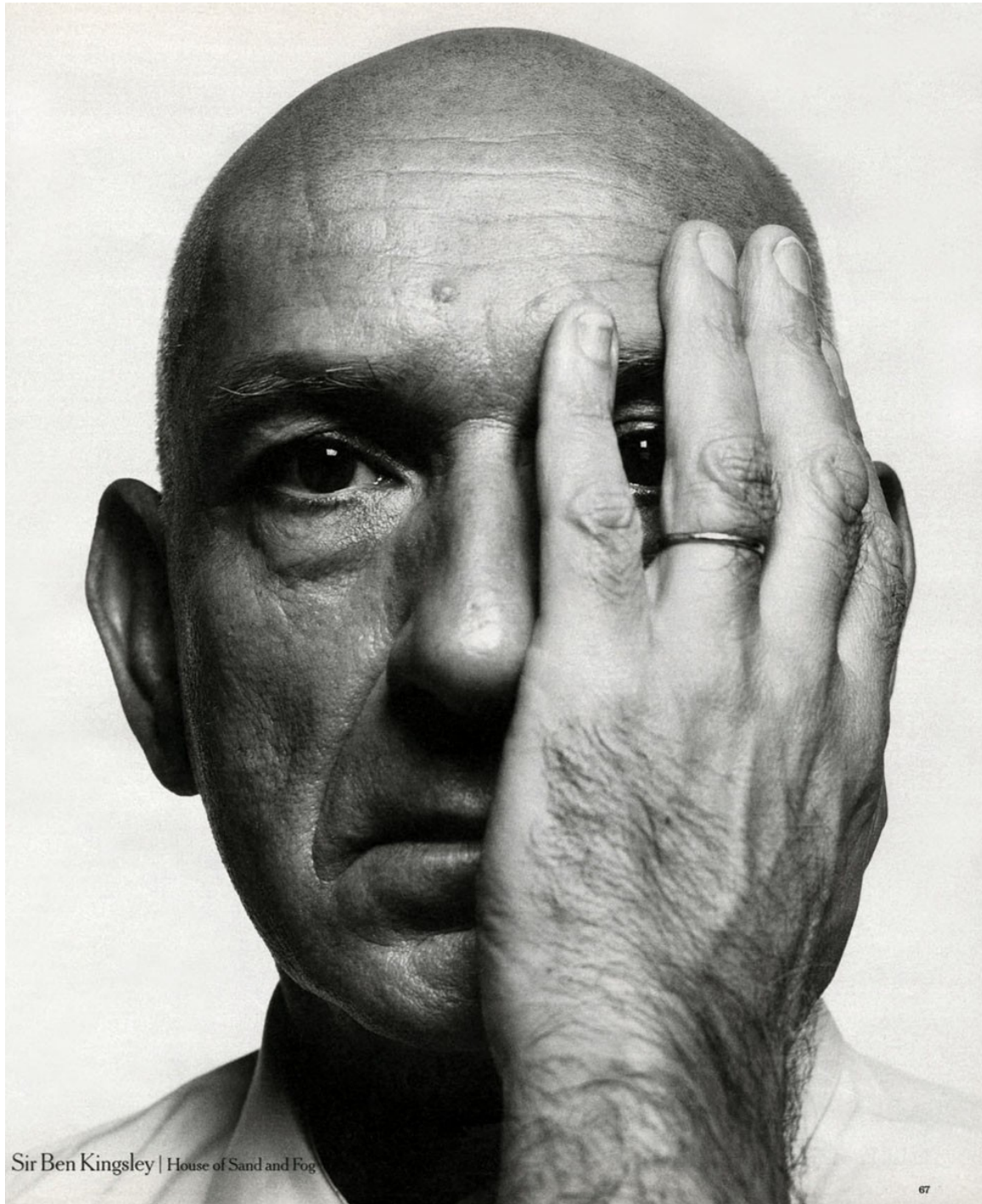
Art Department



Sandrine Van Slee

www.art-dept.com

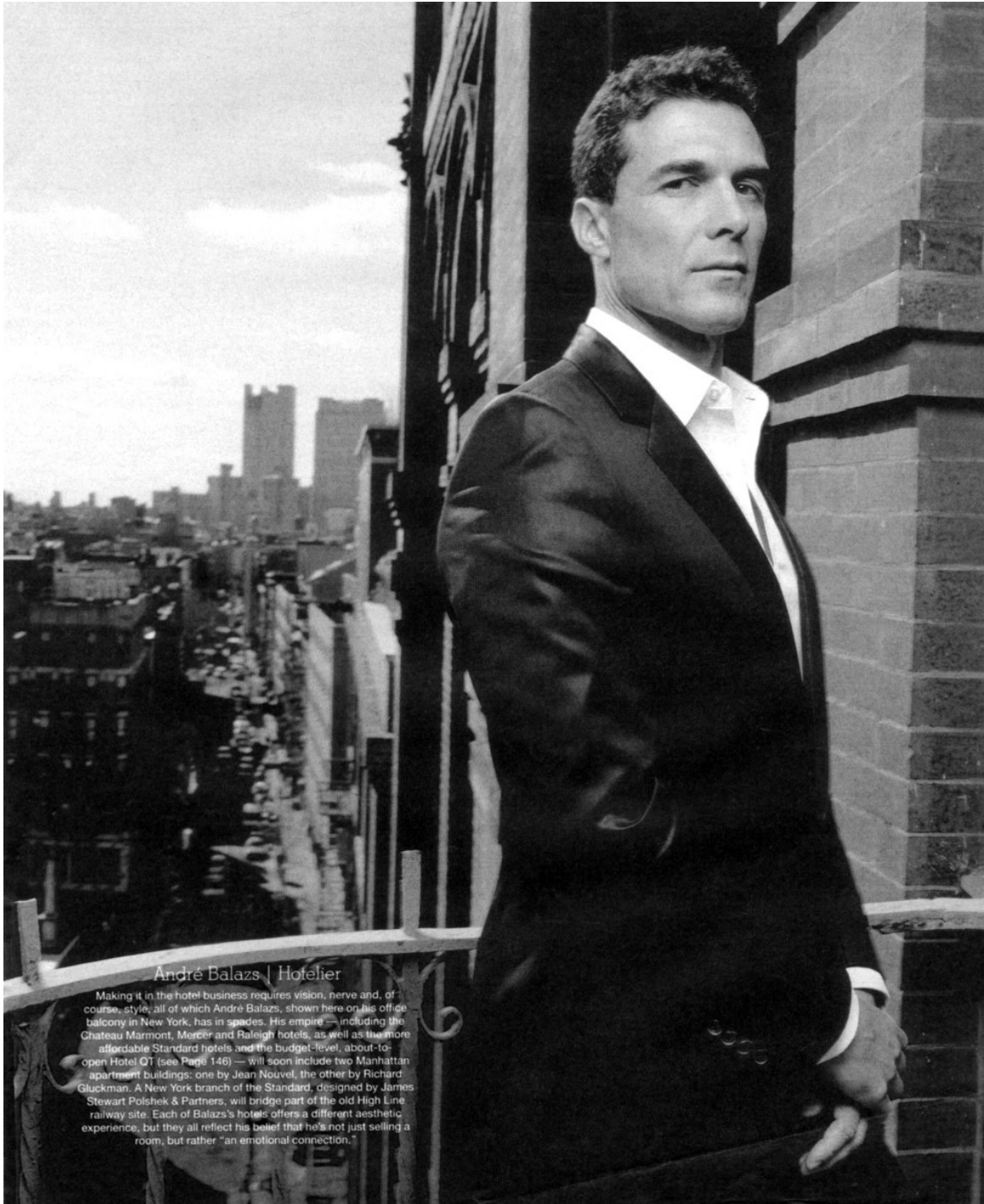
Art Department



Sandrine Van Slee

www.art-dept.com

Art Department



André Balazs | Hotelier

Making it in the hotel business requires vision, nerve and, of course, style, all of which André Balazs, shown here on his office balcony in New York, has in spades. His empire — including the Chateau Marmont, Mercer and Raleigh hotels, as well as the more affordable Standard hotels and the budget-level, about-to-open Hotel QT (see Page 146) — will soon include two Manhattan apartment buildings: one by Jean Nouvel, the other by Richard Gluckman. A New York branch of the Standard, designed by James Stewart Polshek & Partners, will bridge part of the old High Line railway site. Each of Balazs's hotels offers a different aesthetic experience, but they all reflect his belief that he's not just selling a room, but rather "an emotional connection."

Sandrine Van Slee

www.art-dept.com

Art Department



Sandrine Van Slee

www.art-dept.com

Art Department

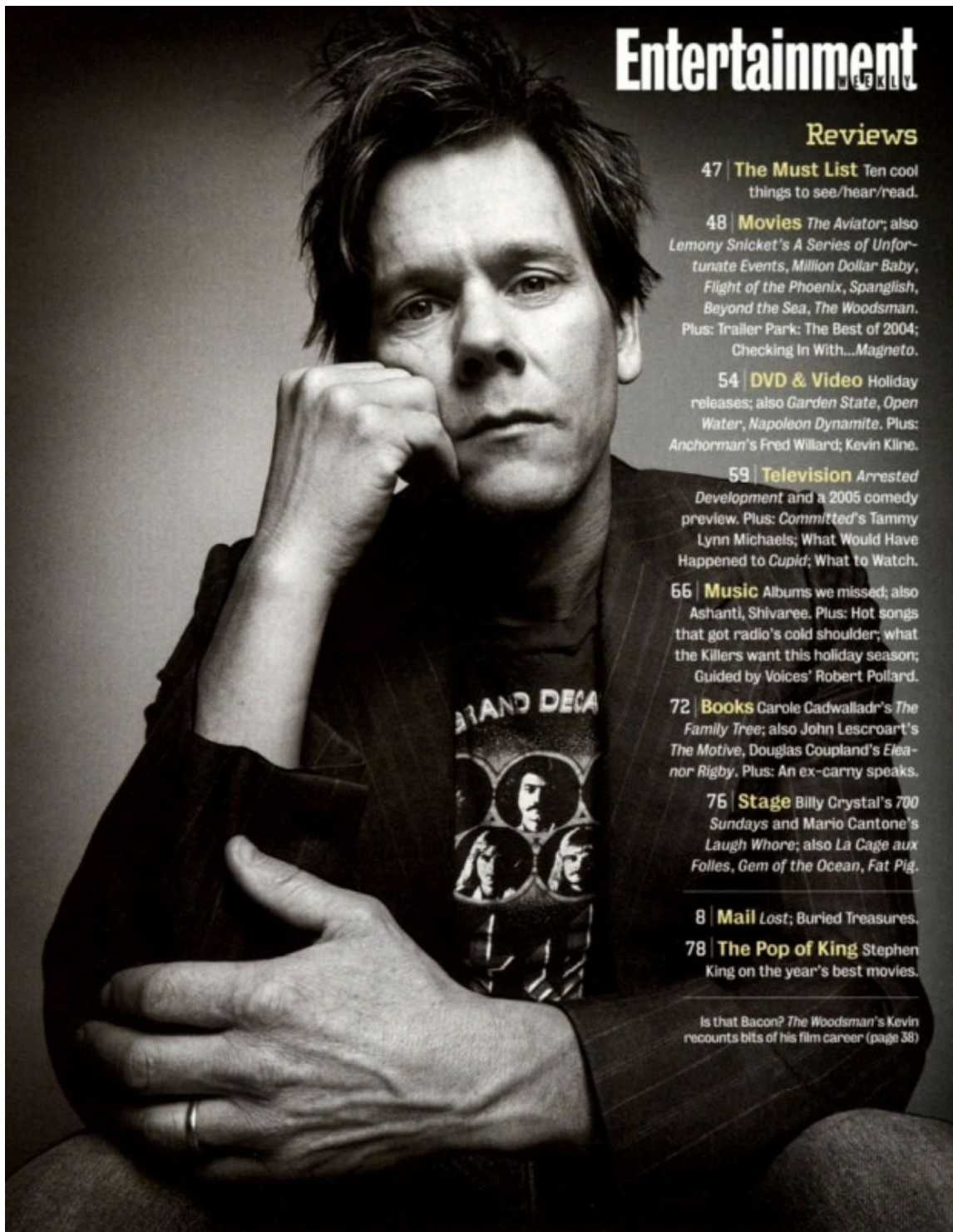
Charlie Hunnam by Bruce Weber



Sandrine Van Slee

www.art-dept.com

Art Department



Entertainment Weekly

Reviews

47 | **The Must List** Ten cool things to see/hear/read.

48 | **Movies** *The Aviator*; also Lemony Snicket's *A Series of Unfortunate Events*, *Million Dollar Baby*, *Flight of the Phoenix*, *Spanglish*, *Beyond the Sea*, *The Woodsman*. Plus: Trailer Park: The Best of 2004; Checking In With...*Magneto*.

54 | **DVD & Video** Holiday releases; also *Garden State*, *Open Water*, *Napoleon Dynamite*. Plus: *Anchorman*'s Fred Willard; Kevin Kline.

59 | **Television** *Arrested Development* and a 2005 comedy preview. Plus: *Committed*'s Tammy Lynn Michaels; What Would Have Happened to *Cupid*; What to Watch.

66 | **Music** Albums we missed; also Ashanti, Shivaree. Plus: Hot songs that got radio's cold shoulder; what the Killers want this holiday season; Guided by Voices' Robert Pollard.

72 | **Books** Carole Cadwalladr's *The Family Tree*; also John Lescroart's *The Motive*, Douglas Coupland's *Eleanor Rigby*. Plus: An ex-carry speaks.

76 | **Stage** Billy Crystal's *700 Sundays* and Mario Cantone's *Laugh Whore*; also *La Cage aux Folles*, *Gem of the Ocean*, *Fat Pig*.

8 | **Mail** Lost; Buried Treasures.

78 | **The Pop of King** Stephen King on the year's best movies.

Is that Bacon? *The Woodsman*'s Kevin recounts bits of his film career (page 38)

Sandrine Van Slee

Art Department



Costa and Jagger, as fabulous as ever in a chic white suit, hitting the streets of New York. Jacket and pants, by special order, Calvin Klein Collection. 212-929-9000. Fashion editor: **Melissa Rubini**

WHEN
FRANCISCO
MET
BIANCA

The CALVIN KLEIN creative director arrived in New York at 21, barely speaking English but with a DREAM to design. Here he encounters one of his first icons, eternal fashion muse and activist BIANCA JAGGER.

Photographs by BRUCE GILDEN

236

Sandrine Van Slee

www.art-dept.com

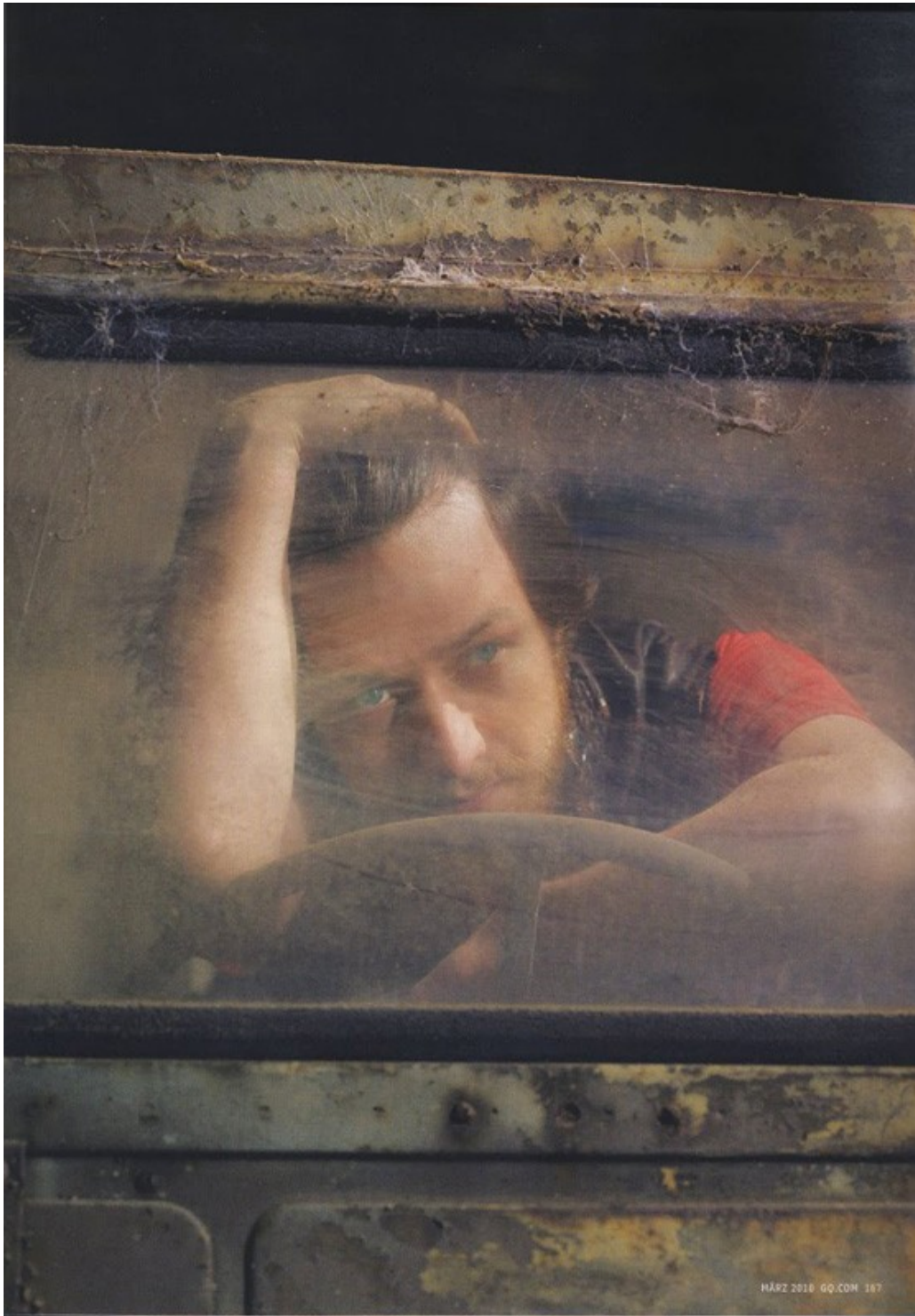
Art Department



Sandrine Van Slee

www.art-dept.com

Art Department



Sandrine Van Slee

www.art-dept.com

Art Department



Sandrine Van Slee

www.art-dept.com

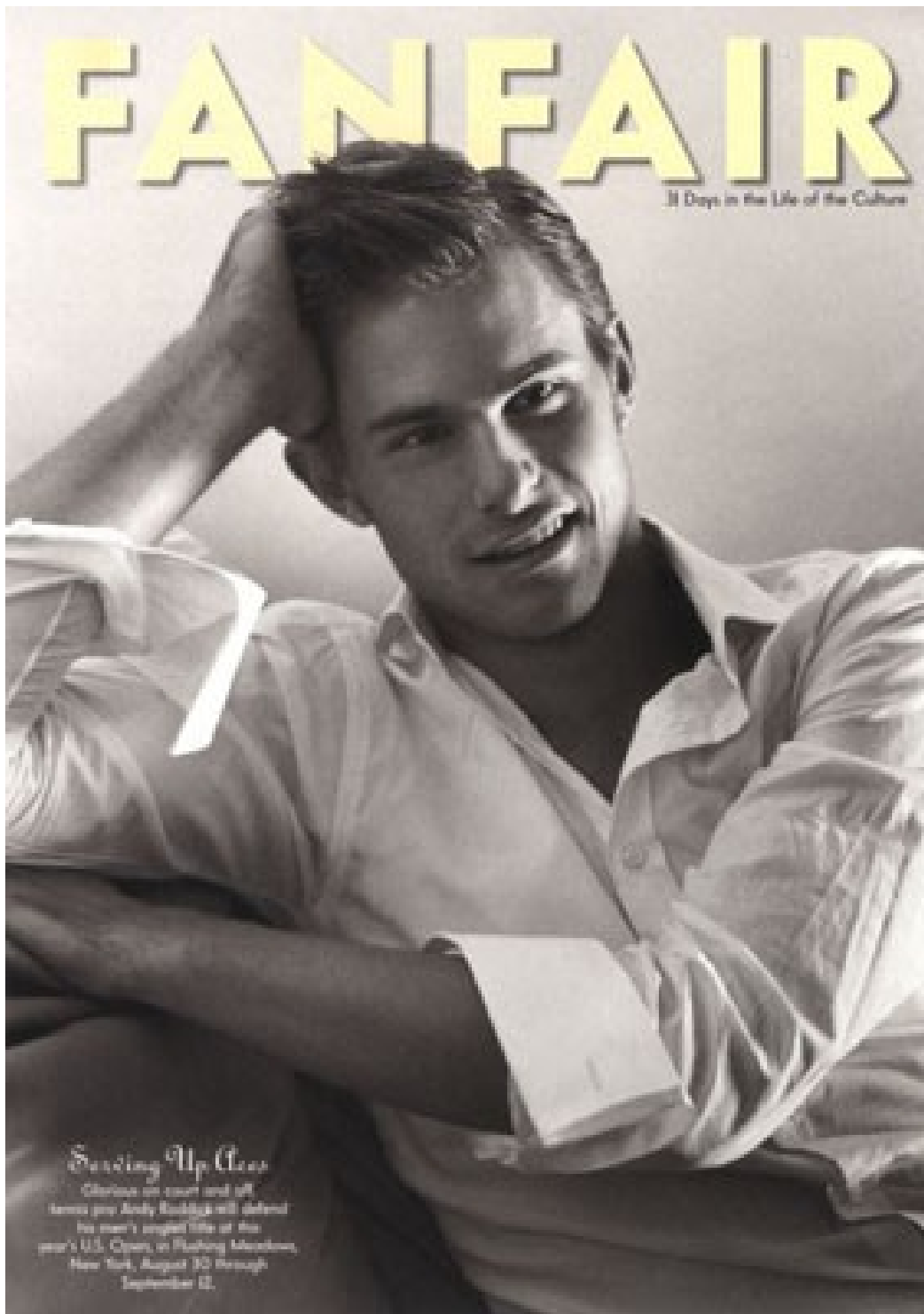
Art Department



Sandrine Van Slee

www.art-dept.com

Art Department



Sandrine Van Slee

www.art-dept.com

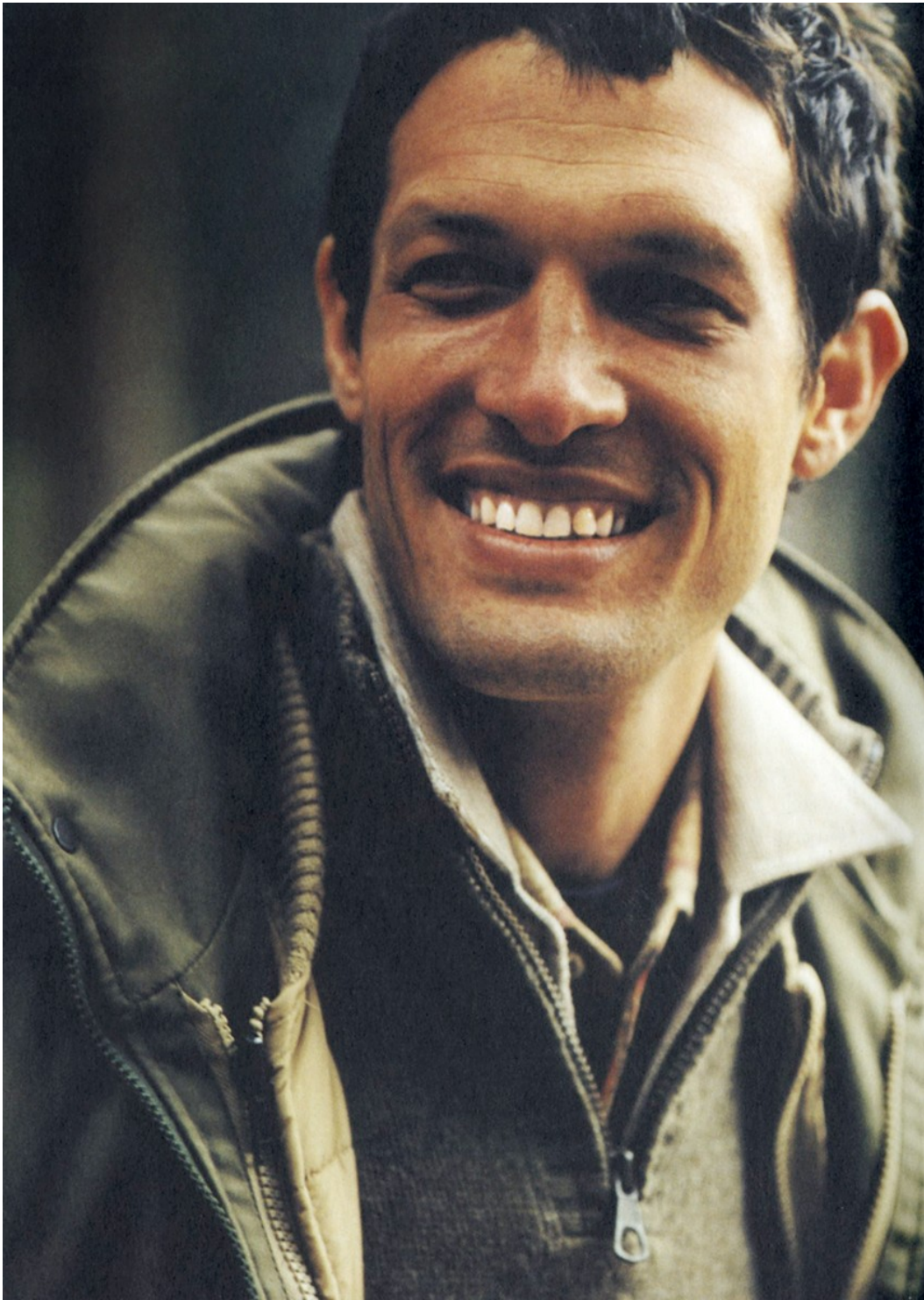
Art Department



Sandrine Van Slee

www.art-dept.com

Art Department



Sandrine Van Slee

www.art-dept.com