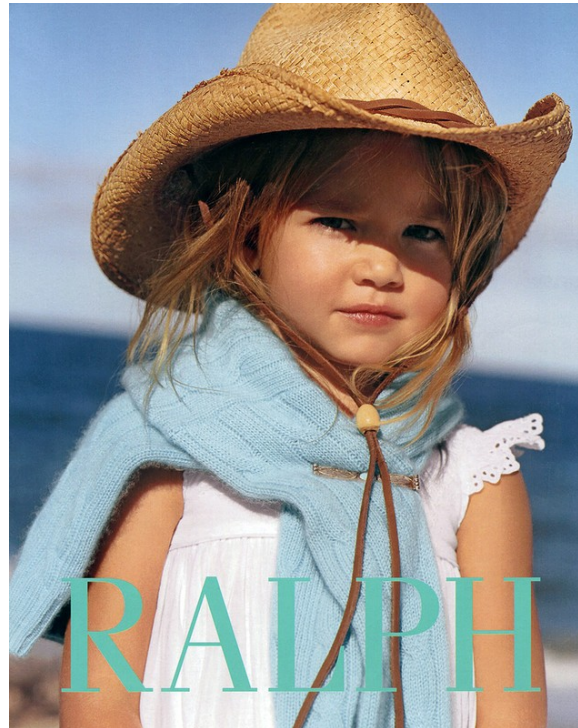
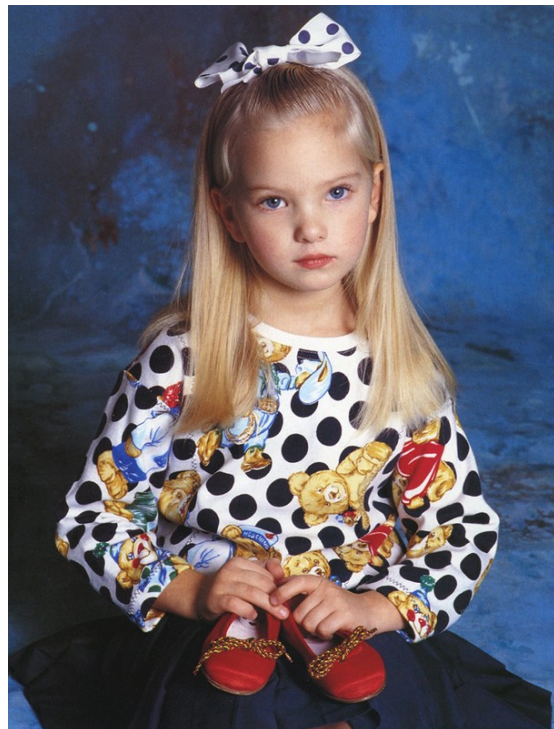


Art Department



Sandrine Van Slee

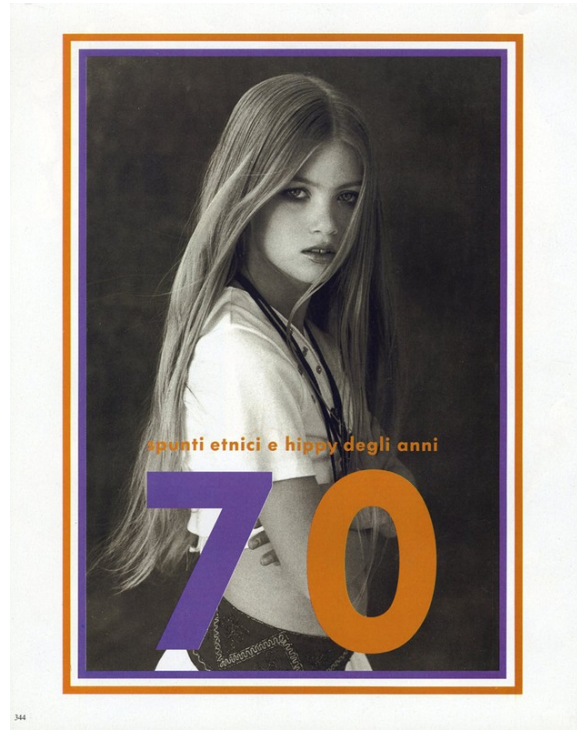
Art Department



Sandrine Van Slee

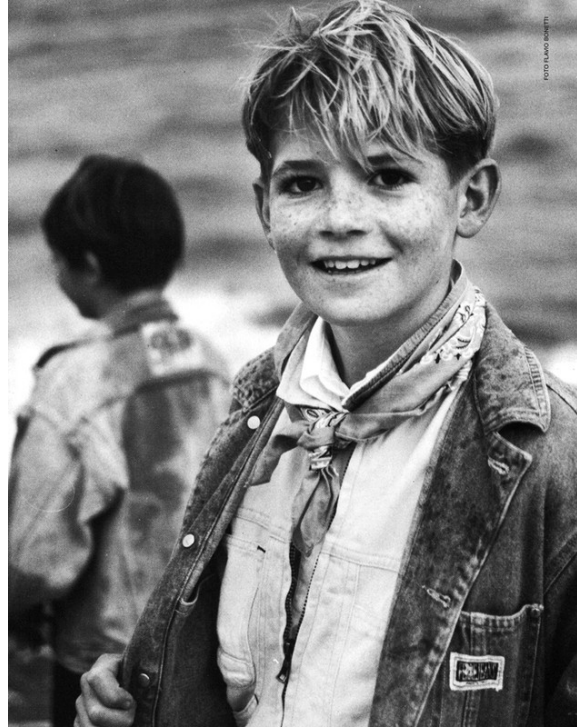
www.art-dept.com

Art Department



Sandrine Van Slee

Art Department



In questo pagina: cordigon in felpe di Essogi; com-
micia fantasia (Ovrogan). Nella pagina accanto:
montgomery scozzese e gamba a ruota in velluto
liscio di Imasido & Stefano Cavallari; I Pince
Pallino, cordigon in felpe (Bill e Teddy Milton);
calze (Malerba); scarpantini (Sulhannino Spring).

Sandrine Van Slee

www.art-dept.com