

# Art Department



Silver Bramham

[www.art-dept.com](http://www.art-dept.com)

# Art Department

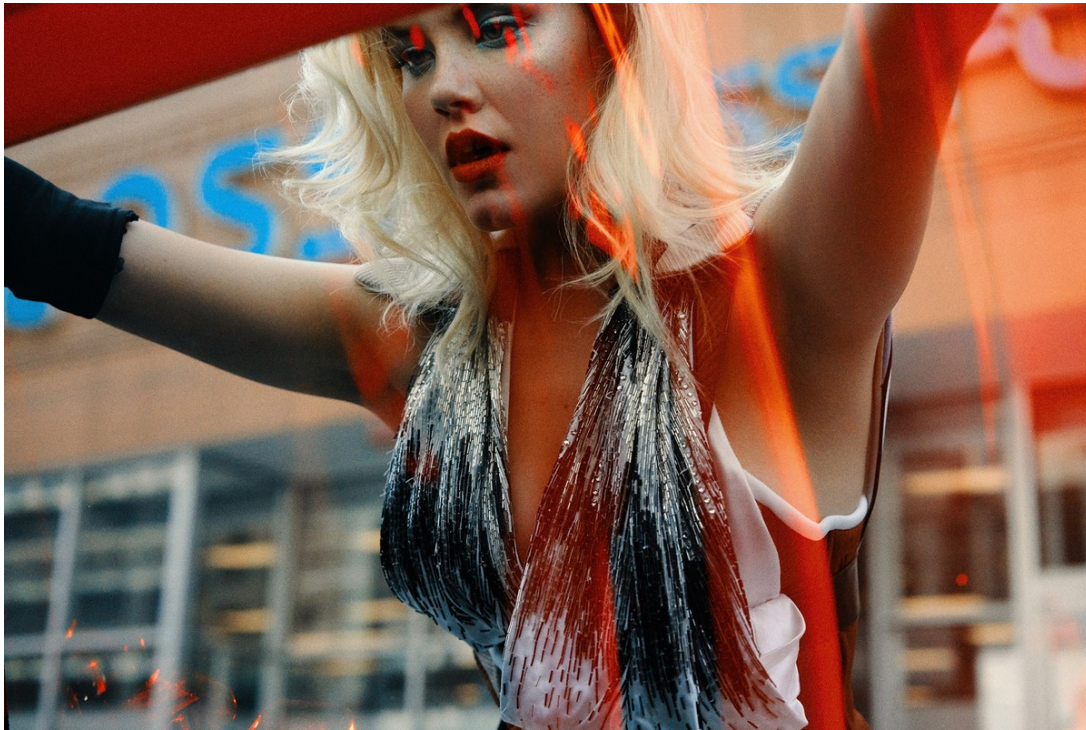


Silver Bramham

[www.art-dept.com](http://www.art-dept.com)



# Art Department



Silver Bramham

[www.art-dept.com](http://www.art-dept.com)

# Art Department



Silver Bramham

[www.art-dept.com](http://www.art-dept.com)



# Art Department



Silver Bramham

[www.art-dept.com](http://www.art-dept.com)

# Art Department



Silver Bramham

[www.art-dept.com](http://www.art-dept.com)



# Art Department



Silver Bramham

[www.art-dept.com](http://www.art-dept.com)



# Art Department

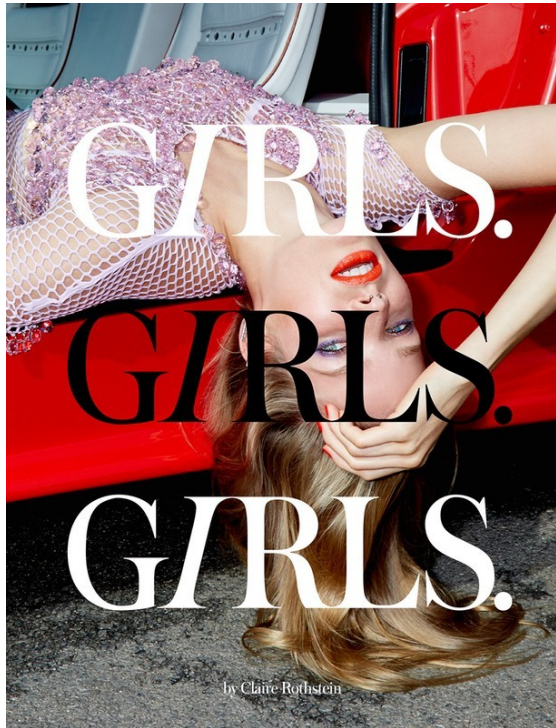


Silver Bramham

[www.art-dept.com](http://www.art-dept.com)



# Art Department



Silver Bramham



# Art Department

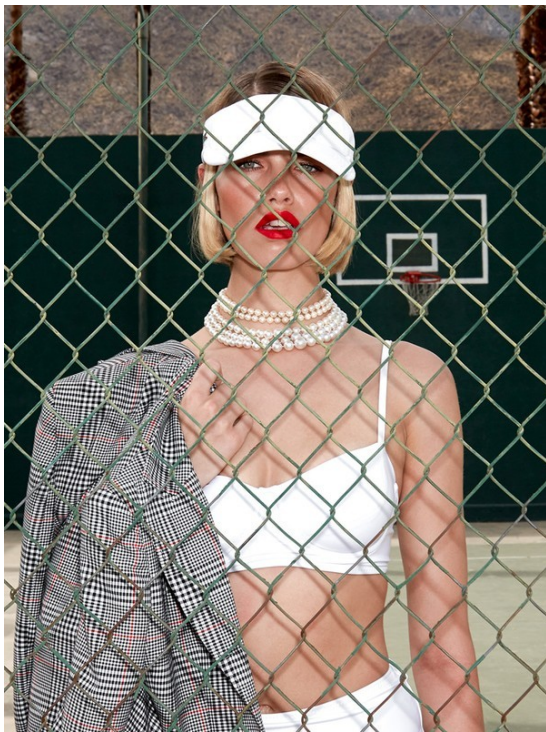


Silver Bramham

[www.art-dept.com](http://www.art-dept.com)



# Art Department



Silver Bramham

[www.art-dept.com](http://www.art-dept.com)



# Art Department



Silver Bramham

[www.art-dept.com](http://www.art-dept.com)



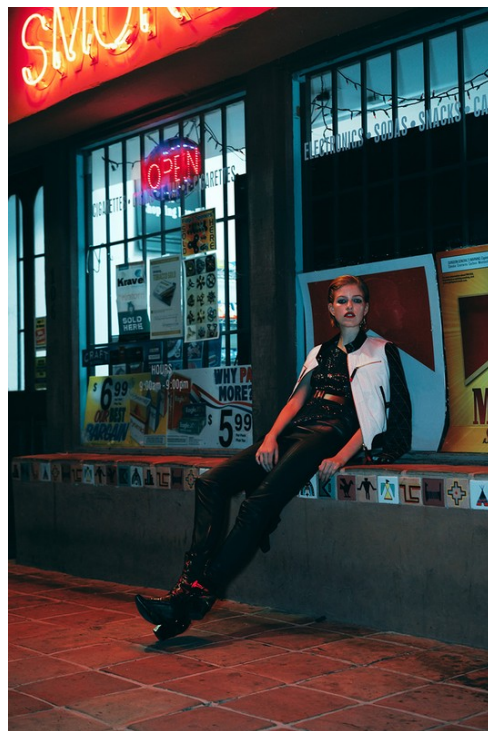
# Art Department



Silver Bramham

[www.art-dept.com](http://www.art-dept.com)

# Art Department



Silver Bramham

[www.art-dept.com](http://www.art-dept.com)



# Art Department



Silver Bramham

[www.art-dept.com](http://www.art-dept.com)



# Art Department

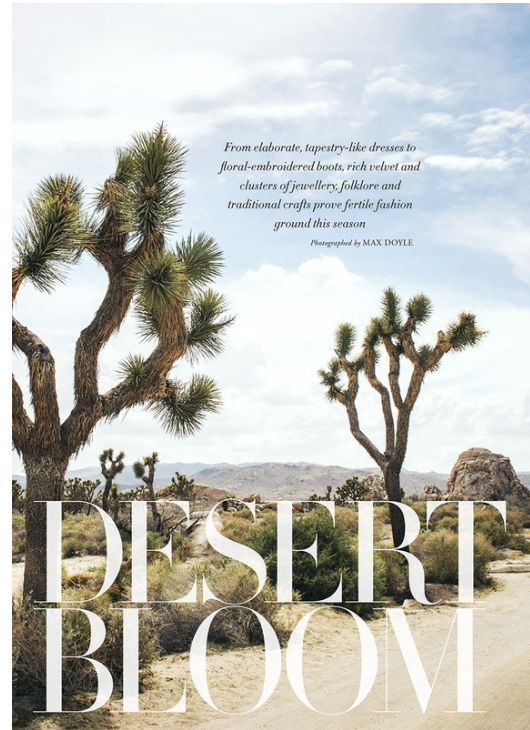


# Silver Bramham

www.art-dept.com



# Art Department



## Silver Bramham

[www.art-dept.com](http://www.art-dept.com)



# Art Department



Silver Bramham

[www.art-dept.com](http://www.art-dept.com)



# Art Department



Drain Van Neuen top, \$11,380. Alexander McQueen earrings, \$1,670. Opposite page: Balenciaga jacket, \$12,275, skirt, \$10,060, shoes, \$1,455, and boots, \$2,745. Prices approximate. Model: Justin Peck at DMS Model Management, hair by Christian Marc at Forward Motion, styling by Silver Bramham at Art Department. Nike Dri-Fit is registered by Lizard Management. Production by Silver Art, San Angeles for artists.



## Silver Bramham

[www.art-dept.com](http://www.art-dept.com)



# Art Department



Silver Bramham

[www.art-dept.com](http://www.art-dept.com)



# Art Department



## Silver Bramham

[www.art-dept.com](http://www.art-dept.com)



# Art Department



Silver Bramham

[www.art-dept.com](http://www.art-dept.com)



# Art Department



Silver Bramham

[www.art-dept.com](http://www.art-dept.com)



# Art Department



Silver Bramham

[www.art-dept.com](http://www.art-dept.com)



# Art Department



Silver Bramham

[www.art-dept.com](http://www.art-dept.com)



# Art Department



## INSPIRATION HAIR for EVERY MOOD

AIR-DRIED WAVES, A MODERN BLOW-DRY AND CLASSIC CURLS – THESE ARE THE NEW STYLES OF THE SEASON, AND THEY LOOK JUST AS GOOD IN REAL LIFE AS THEY DO ON THE CATWALK

Words ROSIE GREEN Photographs CHRIS CHAYMER

**W**ith new-season clothes swinging seductively on hangers, and autumn make-up collections hitting the shelves, we're craving something fresh and modern for our hair, too. But what's right now? "A feeling of ease and effortlessness is still important," says Kerry Warn, John Frieda's international creative consultant and the stylist who created the looks here. "But to get hair to cooperate, you do need a few tools and tricks of the trade." In other words, technique matters. Here, three styles that capture the essence of the season – and how to get them.

### The UPGRADED AIR-DRY

"The air-dried look still feels very current and now. It fits in with the general mood of the moment," Warn says. "Start by washing your hair with a shampoo that will give a bit of scrunch from the off, then comb towel-dried hair into a centre parting and tuck each side tightly behind your ears to keep hair flat on top. It's important the top third of the hair is relatively flat as that's what makes it modern. The texture is in the ends." Warn suggests running serum from mid-lengths to ends (if hair

is thick) or just ends (if it's fine), to stop frizziness. Fine or straight hair will also respond well to some texture spray worked through the lengths, with serum on the ends. "Twist your hair into a knot and secure with large hairpins – not an elastic, or it'll kink – and leave it to part-dry. Use a diffuser to speed up the process; a hairdryer will knock out the wave. Let it loose once dry or nearly dry. If the ends are a little straggly, use large tongs to smooth them out."

**TOPTIP:** "When it comes to low-key looks like this one, think of tongs as simply a tool for texturing or defining any bits that look a little too natural," says Warn, who used them on our model Heather's hairline. If the centre parting shows up your roots, embrace it, says Warn. "Exaggerating grown-out roots gives an edgy, catwalk feel to an otherwise low-maintenance style." »



BEAUTY

## Silver Bramham

[www.art-dept.com](http://www.art-dept.com)



# Art Department



## Silver Bramham

[www.art-dept.com](http://www.art-dept.com)



# Art Department



Silver Bramham

[www.art-dept.com](http://www.art-dept.com)



# Art Department



Silver Bramham

[www.art-dept.com](http://www.art-dept.com)



# Art Department



## Silver Bramham

[www.art-dept.com](http://www.art-dept.com)



# Art Department



## Silver Bramham

[www.art-dept.com](http://www.art-dept.com)



# Art Department



Silver Bramham

[www.art-dept.com](http://www.art-dept.com)



# Art Department

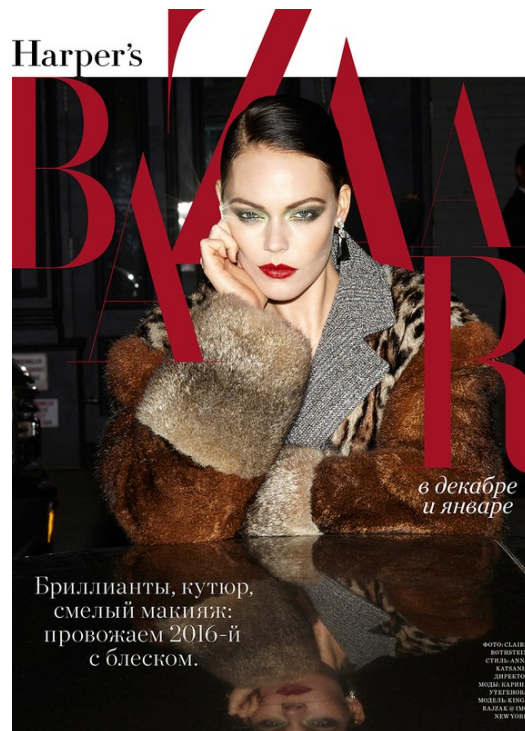


Silver Bramham

[www.art-dept.com](http://www.art-dept.com)



# Art Department



## Silver Bramham

[www.art-dept.com](http://www.art-dept.com)

# Art Department



Silver Bramham

[www.art-dept.com](http://www.art-dept.com)



# Art Department



Silver Bramham

[www.art-dept.com](http://www.art-dept.com)

# Art Department



Silver Bramham

[www.art-dept.com](http://www.art-dept.com)



# Art Department



# Silver Bramham

www.art-dept.com



# Art Department



Silver Bramham

[www.art-dept.com](http://www.art-dept.com)



# Art Department

# W

## WESTWORLD

Photography: CLAIRE BOTTISTEIN — Director: PAUL MCLEAN  
Styling: ALICIA LOMBARDINI — Creative Direction: JAKOB FES

We hit the dusty trail to shoot a 1/2 film and stills starring supermodel **MARTHA HUNT**, who dons the Western wear that wrangled runways this season. While our film is in the editing room, enjoy these alluring images of our cowgirl shot in the Los Angeles desert. Sure, all that suede, denim and fringe looks luxurious on all those city slickers, but these duds are much more at home on the range.

WP: Blue Collar — Stone Island Knight / Carter Ochoy  
Makeup: Blue Bramham / Art Department — Models: Martha Hunt / IMG  
Hair: Monica Andino / Photographers Lab Inc. / Fred Moulton — Fashion  
Accessories: Alex Cohen, Annie Reynolds & Sarah Althoff



## Silver Bramham

[www.art-dept.com](http://www.art-dept.com)



# Art Department



Silver Bramham

[www.art-dept.com](http://www.art-dept.com)



# Art Department



Silver Bramham



# Art Department



Silver Bramham

[www.art-dept.com](http://www.art-dept.com)



# Art Department



Silver Bramham

[www.art-dept.com](http://www.art-dept.com)

# Art Department



Silver Bramham

[www.art-dept.com](http://www.art-dept.com)



# Art Department



Silver Bramham

[www.art-dept.com](http://www.art-dept.com)

# Art Department

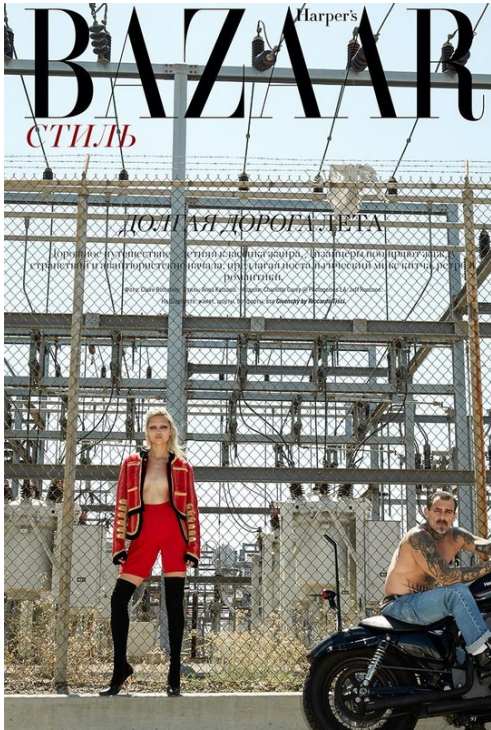


Silver Bramham

[www.art-dept.com](http://www.art-dept.com)



# Art Department



Silver Bramham

[www.art-dept.com](http://www.art-dept.com)



# Art Department

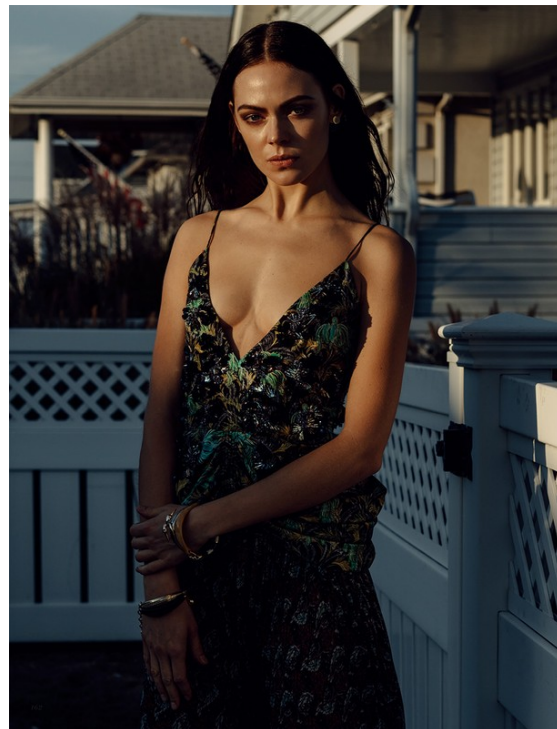


Silver Bramham

[www.art-dept.com](http://www.art-dept.com)



# Art Department



Silver Bramham

[www.art-dept.com](http://www.art-dept.com)



# Art Department



Silver Bramham

[www.art-dept.com](http://www.art-dept.com)



# Art Department



Silver Bramham

[www.art-dept.com](http://www.art-dept.com)

# Art Department



Silver Bramham

[www.art-dept.com](http://www.art-dept.com)



# Art Department



Silver Bramham

[www.art-dept.com](http://www.art-dept.com)



# Art Department



## Silver Bramham

[www.art-dept.com](http://www.art-dept.com)



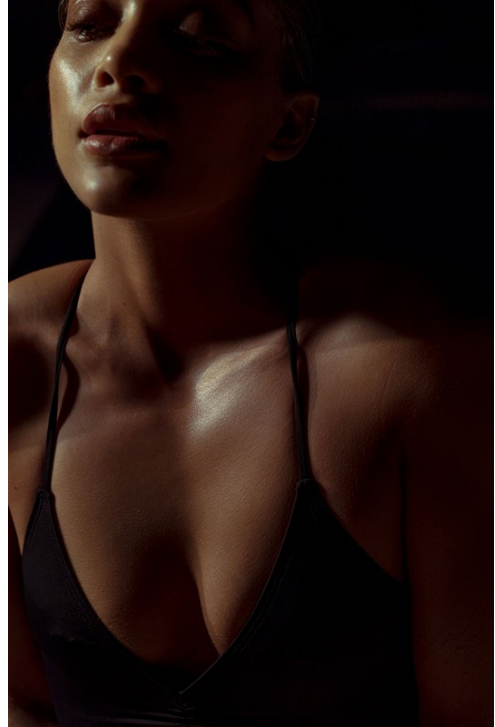
# Art Department



Silver Bramham

[www.art-dept.com](http://www.art-dept.com)

# Art Department

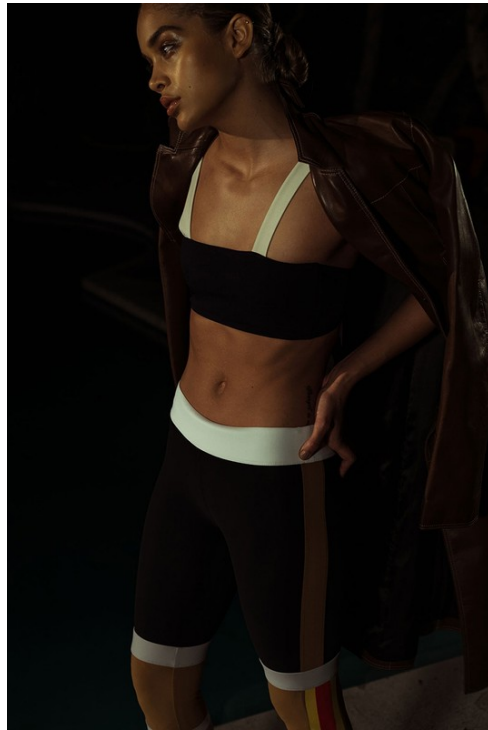


Silver Bramham

[www.art-dept.com](http://www.art-dept.com)



# Art Department



Silver Bramham

[www.art-dept.com](http://www.art-dept.com)



# Art Department



Silver Bramham

[www.art-dept.com](http://www.art-dept.com)



# Art Department



Silver Bramham

[www.art-dept.com](http://www.art-dept.com)



# Art Department



# Silver Bramham

www.art-dept.com



# Art Department



Silver Bramham

[www.art-dept.com](http://www.art-dept.com)



# Art Department



## Silver Bramham

[www.art-dept.com](http://www.art-dept.com)



# Art Department



Silver Bramham

[www.art-dept.com](http://www.art-dept.com)



# Art Department



Silver Bramham

[www.art-dept.com](http://www.art-dept.com)



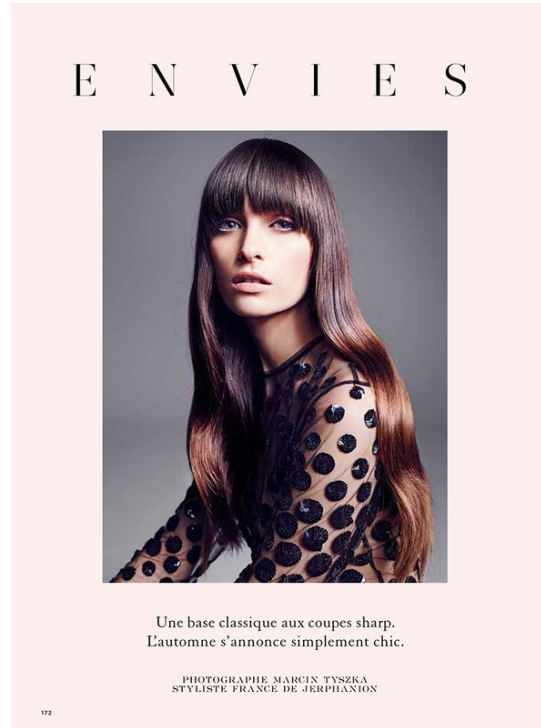
# Art Department



## Silver Bramham

[www.art-dept.com](http://www.art-dept.com)

# Art Department



## Silver Bramham

[www.art-dept.com](http://www.art-dept.com)



# Art Department



## Silver Bramham

[www.art-dept.com](http://www.art-dept.com)

# Art Department



Silver Bramham

www.art-dept.com



# Art Department



Silver Bramham

[www.art-dept.com](http://www.art-dept.com)



# Art Department



Silver Bramham

[www.art-dept.com](http://www.art-dept.com)



# Art Department



Silver Bramham

[www.art-dept.com](http://www.art-dept.com)

# Art Department



Silver Bramham

[www.art-dept.com](http://www.art-dept.com)



# Art Department



Silver Bramham

[www.art-dept.com](http://www.art-dept.com)



# Art Department



Silver Bramham

[www.art-dept.com](http://www.art-dept.com)



# Art Department



# Silver Bramham

www.art-dept.com

# Art Department



# Silver Bramham

www.art-dept.com



# Art Department

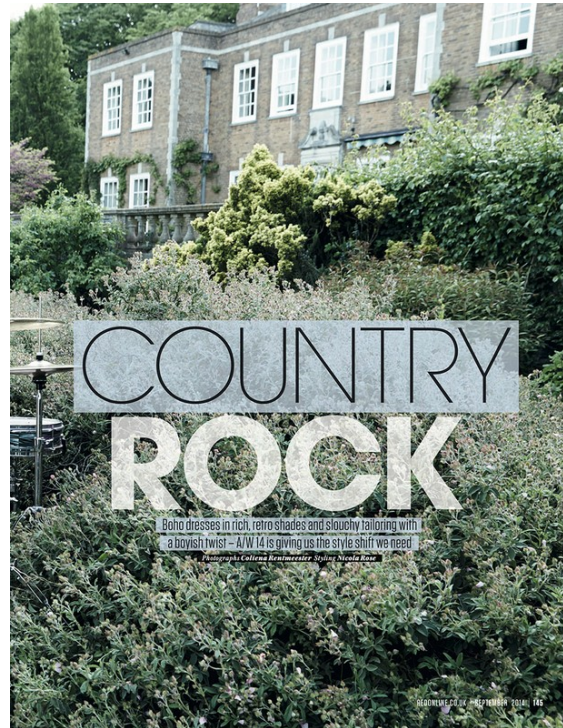


# Silver Bramham

www.art-dept.com



# Art Department



Silver Bramham

[www.art-dept.com](http://www.art-dept.com)



# Art Department



# Silver Bramham

www.art-dept.com



# Art Department



*French women  
don't do colour*  
*Ladylike chic, well-structured  
tailoring and a strict palette  
of black and white ruled the  
catwalks at the Paris shows*

Photographs JONTY DAVIES Styling TIFFANY FRASER STEELE

100 Redefine.co.uk | SEPTEMBER 2011

## Silver Bramham

www.art-dept.com



# Art Department



## Silver Bramham

[www.art-dept.com](http://www.art-dept.com)

# Art Department



## Silver Bramham

[www.art-dept.com](http://www.art-dept.com)



# Art Department



Silver Bramham

[www.art-dept.com](http://www.art-dept.com)