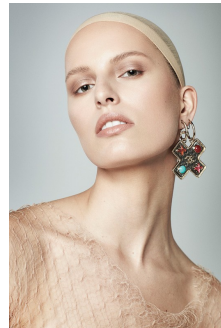
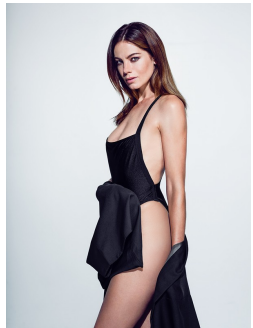
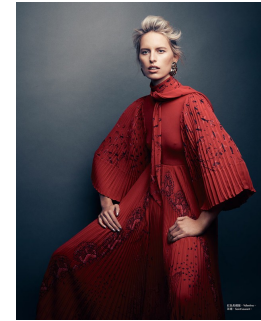
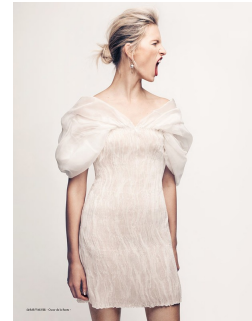
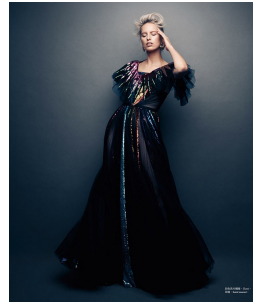


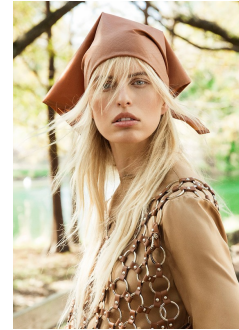
Art Department



Stefanie Willmann

www.art-dept.com

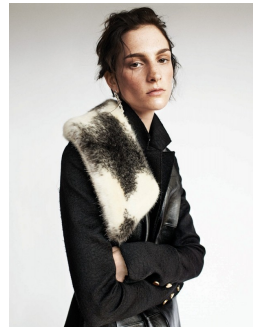
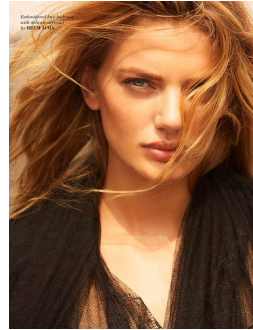
Art Department



Stefanie Willmann

www.art-dept.com

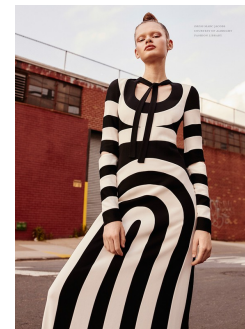
Art Department



Stefanie Willmann

www.art-dept.com

Art Department



Stefanie Willmann

www.art-dept.com

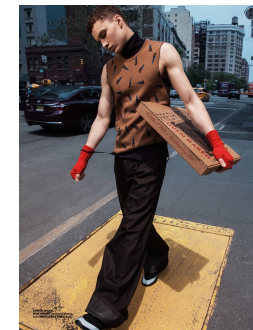
Art Department



Stefanie Willmann

www.art-dept.com

Art Department



Stefanie Willmann

www.art-dept.com

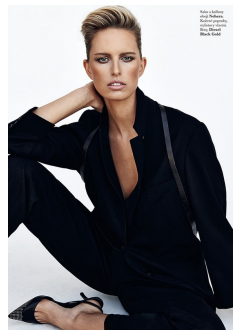
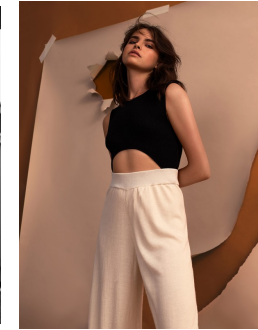
Art Department



Stefanie Willmann

www.art-dept.com

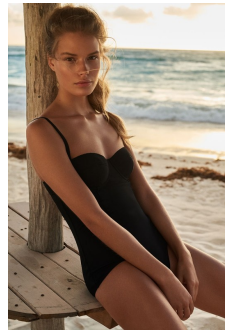
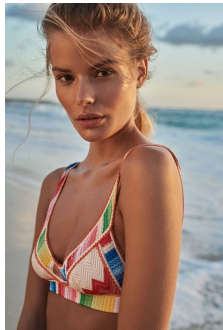
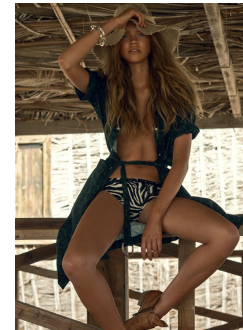
Art Department



Stefanie Willmann

www.art-dept.com

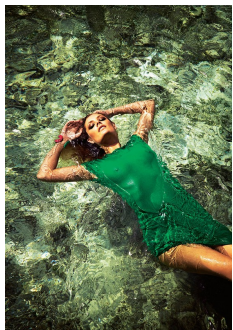
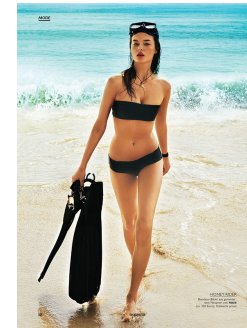
Art Department



Stefanie Willmann

www.art-dept.com

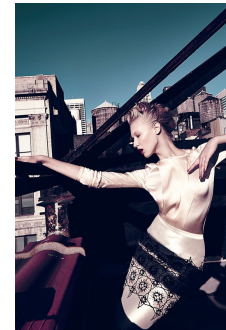
Art Department



Stefanie Willmann

www.art-dept.com

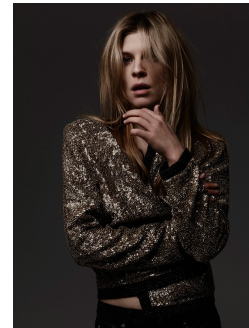
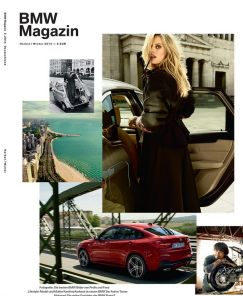
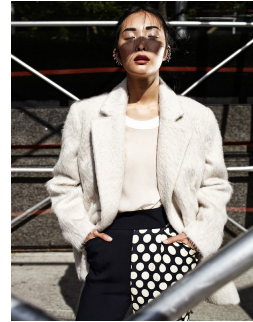
Art Department



Stefanie Willmann

www.art-dept.com

Art Department

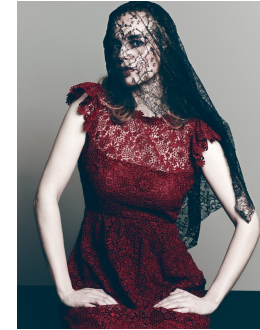


Stefanie Willmann

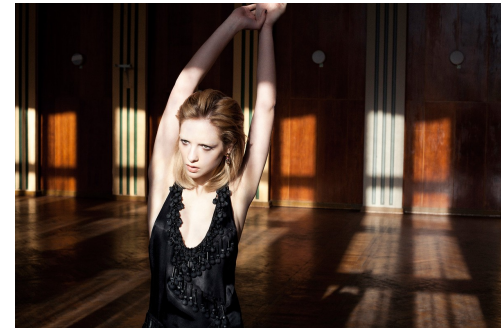
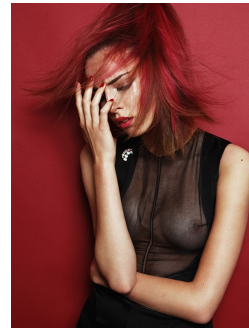
www.art-dept.com

Art Department

*Break
On
Through*
Photograph: CHAMA
Spring 1998, ELIZABETH



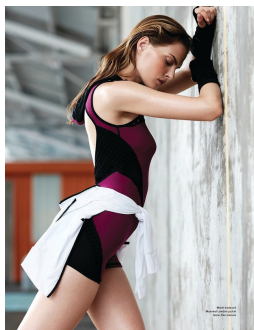
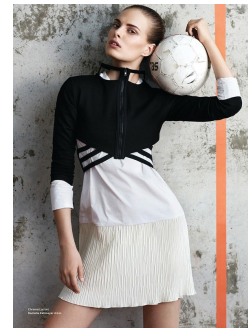
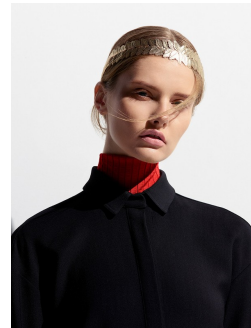
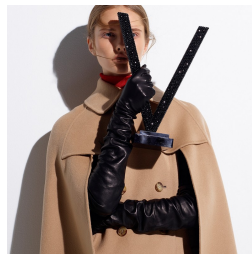
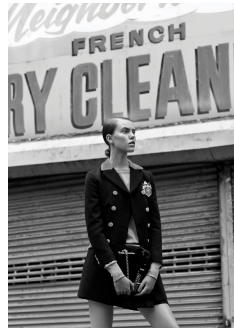
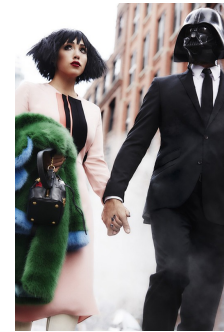
RED
Photograph: STEVE GRANITZ
Spring 1998, ELIZABETH
Photograph: STEVE GRANITZ
Spring 1998, ELIZABETH
Photograph: STEVE GRANITZ
Spring 1998, ELIZABETH
Photograph: STEVE GRANITZ
Spring 1998, ELIZABETH
FICTION



Stefanie Willmann

www.art-dept.com

Art Department



Stefanie Willmann

www.art-dept.com

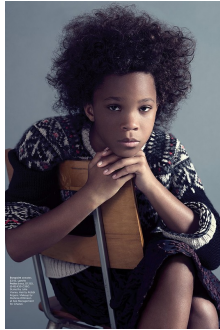
Art Department



Stefanie Willmann

www.art-dept.com

Art Department



Stefanie Willmann

www.art-dept.com

Art Department



Stefanie Willmann

www.art-dept.com