

Art Department



Tomoyo Pattou

www.art-dept.com

Art Department



Tomoyo Pattou

www.art-dept.com

Art Department



Tomoyo Pattou

www.art-dept.com

Art Department



Tomoyo Pattou

www.art-dept.com

Art Department

NO. 20

SUSTAINABILITY & ETHICAL PRODUCTION

SSFW 24/25

O N E



Tomoyo Pattou

www.art-dept.com

Art Department



Tomoyo Pattou

www.art-dept.com

Art Department



Tomoyo Pattou

www.art-dept.com

Art Department



Tomoyo Pattou

www.art-dept.com

Art Department



Tomoyo Pattou

www.art-dept.com

Art Department



Tomoyo Pattou

www.art-dept.com

Art Department



Tomoyo Pattou

www.art-dept.com

Art Department



Tomoyo Pattou

www.art-dept.com

Art Department



Tomoyo Pattou

www.art-dept.com

Art Department



Tomoyo Pattou

www.art-dept.com

Art Department



Tomoyo Pattou

www.art-dept.com

Art Department



Tomoyo Pattou

www.art-dept.com

Art Department



Tomoyo Pattou

www.art-dept.com

Art Department



Tomoyo Pattou

www.art-dept.com

Art Department



Tomoyo Pattou

www.art-dept.com

Art Department



Tomoyo Pattou

www.art-dept.com

Art Department



Tomoyo Pattou

www.art-dept.com

Art Department



Tomoyo Pattou

www.art-dept.com

Art Department



Tomoyo Pattou

www.art-dept.com

Art Department



Tomoyo Pattou

www.art-dept.com

Art Department



Tomoyo Pattou

www.art-dept.com

Art Department



Tomoyo Pattou

www.art-dept.com

Art Department



Tomoyo Pattou

www.art-dept.com

Art Department



Tomoyo Pattou

www.art-dept.com

Art Department



Tomoyo Pattou

www.art-dept.com

Art Department



Tomoyo Pattou

www.art-dept.com

Art Department



Tomoyo Pattou

www.art-dept.com

Art Department



Tomoyo Pattou

www.art-dept.com

Art Department



Tomoyo Pattou

www.art-dept.com

Art Department



Tomoyo Pattou

www.art-dept.com

Art Department



Tomoyo Pattou

www.art-dept.com

Art Department



Tomoyo Pattou

www.art-dept.com

Art Department



Tomoyo Pattou

www.art-dept.com

Art Department



Tomoyo Pattou

www.art-dept.com

Art Department



Tomoyo Pattou

www.art-dept.com

Art Department



Tomoyo Pattou

www.art-dept.com

Art Department



Tomoyo Pattou

www.art-dept.com

Art Department



Tomoyo Pattou

www.art-dept.com

Art Department

DAILY EDITION OCTOBER 11, 2022

WWD

Fashion. Beauty. Business.

Thom's CFDA Turn

Thom Browne has been named chairman of the CFDA, effective Jan. 1.

Page 2

Chanel's Choice

In a new initiative, Chanel has tapped three global creative makeup partners.

Page 6

That's a Wrap

L.A. Fashion Week won plaudits, while designers and celebs partied into the wee hours.

Pages 37 and 39



Twisting Tradition

To kick off New York Luxury Bridal Fashion Week, which runs Tuesday through Friday with a full schedule of in-person events, WWD previews the upcoming season's modern wedding fare, such as Sareh Nouri's Italian stretch mikado gown with detachable overskirt, worn with bridal accessories label Monvieve's headpiece, Wempe's diamond earrings, diamond chain bracelets and diamond ring and De Beers' diamond rings. For more, see pages 7 to 30.

PHOTOGRAPH BY RICARDO BEAS
STYLED BY ALEX BADIA

Tomoyo Pattou

www.art-dept.com

Art Department



Tomoyo Pattou

www.art-dept.com

Art Department

ELLE

**MO-
DA**

**90. CICLOS NUEVOS
98. ANCORA,
ANCORA,
ANCORA108.
GLAM, AS IN
GLAMOROUS**

foto: ANAIRAM.
look total, GEORGES HOBEIKA.

89

Tomoyo Pattou

www.art-dept.com

Art Department



Tomoyo Pattou

www.art-dept.com

Art Department



Tomoyo Pattou

www.art-dept.com

Art Department



Tomoyo Pattou

www.art-dept.com

Art Department



Tomoyo Pattou

www.art-dept.com

Art Department



Tomoyo Pattou

www.art-dept.com

Art Department



Flash Art

9 770019 352005 30360>

AGNES QUESTIONMARK
MONIA BEN HAMOUDA
GABRIELE GARAVAGLIA
PIERO GILARDI
SAGG NAPOLI & BETTY BEE
ALICE RONCHI

NO. 360 vol. 56
Primavera 2023
ISSN 0015-3524

IT €10,00
EU €15,00
USA \$19,95

ITALIA • PERIODICITÀ TRIMESTRALE • POSTE ITALIANE SPA SPEDIZIONE A.P.-D.L. 353/2003 (CONVERTITO IN LEGGE 27/02/2004 N°46) ART.1, COMMA 1 LO/MI

Tomoyo Pattou

www.art-dept.com

Art Department



Flash Art
THE ALWAYS ALREADY

Flash Art
NO. 344 FALL 2023
THE ALWAYS ALREADY

Flash Art
THE ALWAYS ALREADY

PRECIOUS OKOYOMON
in conversation with JAZMINA FIGUEROA
photographed by ROB KULISEK

ART & LANGUAGE
RHEA DILLON
NIKITA GALE
RORY PILGRIM WITH CAROL R. KALLEND
SOIL THORNTON
WANGSHUI
ISSY WOOD

+ SEMIOFUCK EPILOGUE by ARMATURE GLOBALE
+ THE CURIST FREDDIE POWELL on GINNY ON FREDERICK, LONDON
+ CRITIC DISPATCH POSTPOSTPOST

Issue 344 vol. 56
FALL 2023
ISSN 0394-1493

EU €18,00
UK £14,95
USA \$19,95

POSTE ITALIANE SPA SPEDIZIONE A.P. - D.L. 353/2003 (CONVERTITO IN LEGGE 27/02/2004 N° 46) ART. 1, COMMA 1 LO/MI

Tomoyo Pattou

www.art-dept.com

Art Department



INSIDE:

ANTHONY NAPLES
SELECTIONS: PAURRO
GOLDEN FEATURES
IN THE STUDIO: SUKI SOU
TOOLROOM RECORDS
PHIL MOFFA IN THE HOT SEAT
REVIEWS / TECH NEWS
AND LOTS MORE

DJ MAG™
LIVING & BREATHING
DANCE MUSIC!
DJMAG.COM

Trust The Process
**Coco &
Breezy**

Tomoyo Pattou

www.art-dept.com

Art Department



Tomoyo Pattou

www.art-dept.com

Art Department



Tomoyo Pattou

www.art-dept.com

Art Department



Tomoyo Pattou

www.art-dept.com

Art Department



Tomoyo Pattou

www.art-dept.com

Art Department



Tomoyo Pattou

www.art-dept.com

Art Department



Tomoyo Pattou

www.art-dept.com

Art Department



Tomoyo Pattou

www.art-dept.com

Art Department



Tomoyo Pattou

www.art-dept.com

Art Department



Tomoyo Pattou

www.art-dept.com

Art Department



Tomoyo Pattou

www.art-dept.com

Art Department



Tomoyo Pattou

www.art-dept.com

Art Department



Tomoyo Pattou

www.art-dept.com

Art Department



Photography DAMIEN ROPERO
Fashion EMMA OLECK

VNEWS

Crank up the vestimentary volume and thrash out to this season's hottest releases—equal parts classic and coquettish. From sliced-up baby doll dresses to punky pumps and velvet-coated arm candy, one of these showstoppers *might* just be the mic-drop your wardrobe's been waiting for all along

Tess wears watch and necklace TIFFANY & CO.
HardWear watch
(in sterling silver and steel with diamonds)
HardWear pearl lock necklace
(in silver, 9–10 mm)

TIME AFTER TIME TIFFANY

Let's get one thing straight; diamonds are a girl's best friend. At Tiffany's The Landmark, however, they're so much more than just that. They're the past, present, and future. Where 83 years of haute horlogerie heritage muses with modernity, The Landmark gets updated with uber-sleek modern design and interactive displays. However, it is Tiffany's on Fifth Avenue, after all...so a dash of old-school glamor is to be expected. Note the Tiffany Diamond on display. With a whopping 128.54-carat serving of diamond,

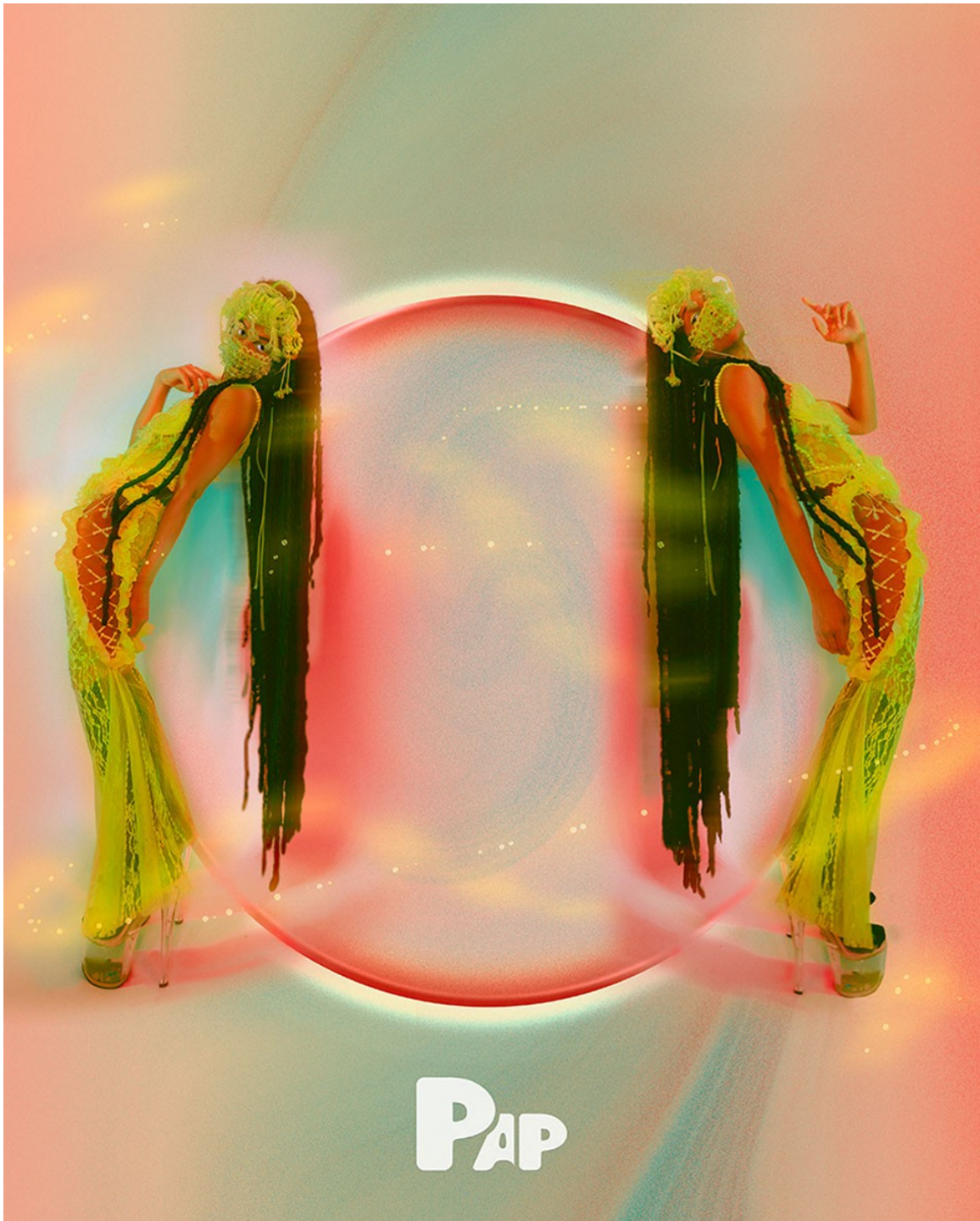
this scandal of a stone speaks to all the gemmaphiles out there. We know you're dying for a slice. While you can't exactly take a chunk out of this beauty, you can scope out Tiffany HardWear: a line of mesmerizing timepieces launched to celebrate the rebirth of The Landmark. Lustrous diamonds scintillate with sophistication, leading to a crystal dial shaped in the likeness of the renowned rock. Glimmering in their icy brilliance, one of these watches might just satisfy that diamantine desire. JOHN KOPPE

40

Tomoyo Pattou

www.art-dept.com

Art Department



Tomoyo Pattou

www.art-dept.com

Art Department

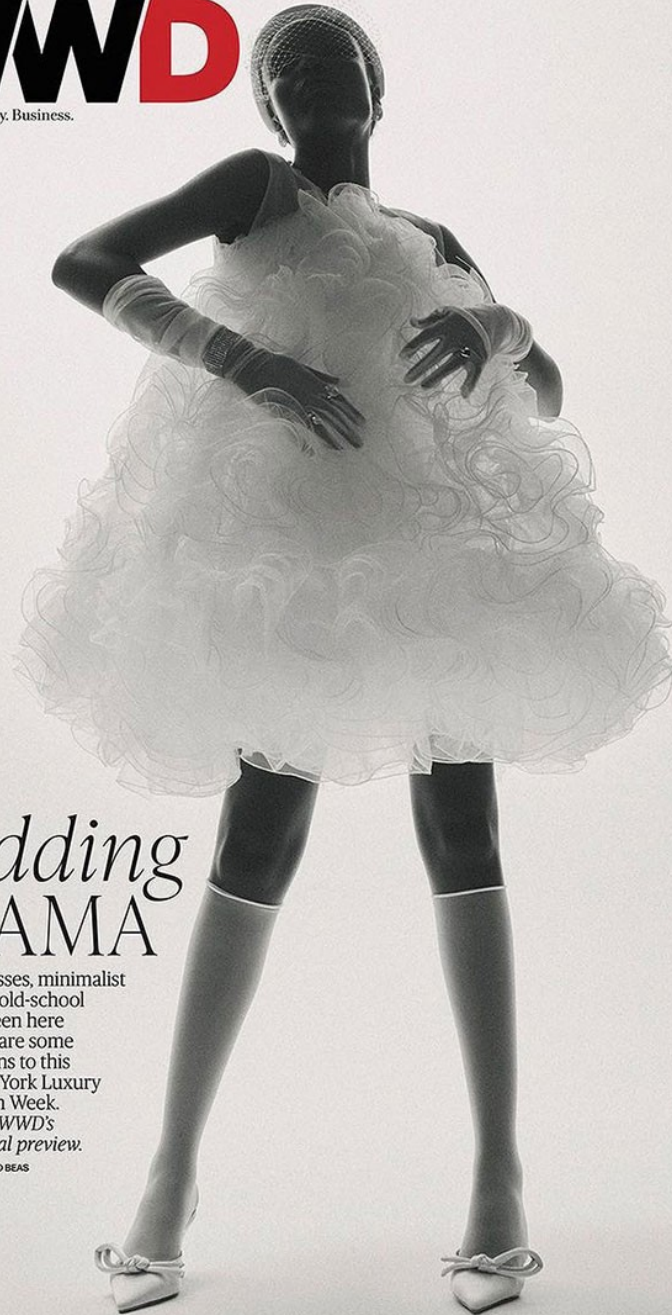
SPECIAL EDITION OCTOBER 10, 2023

WWD
Fashion. Beauty. Business.

Wedding DRAMA

Baby-doll dresses, minimalist columns and old-school glamour, as seen here from Nardos, are some of the additions to this season's New York Luxury Bridal Fashion Week. See inside for WWD's exclusive bridal preview.

PHOTOGRAPH BY RICARDO BEAS



Tomoyo Pattou

www.art-dept.com

Art Department



Tomoyo Pattou

www.art-dept.com

Art Department



Tomoyo Pattou

www.art-dept.com

Art Department



Tomoyo Pattou

www.art-dept.com

Art Department



Tomoyo Pattou

www.art-dept.com

Art Department



Tomoyo Pattou

www.art-dept.com

Art Department



Tomoyo Pattou

www.art-dept.com

Art Department



Tomoyo Pattou

www.art-dept.com

Art Department



Tomoyo Pattou

www.art-dept.com

Art Department



Tomoyo Pattou

www.art-dept.com

Art Department



Tomoyo Pattou

www.art-dept.com

Art Department



Tomoyo Pattou

www.art-dept.com

Art Department



Tomoyo Pattou

www.art-dept.com

Art Department



Tomoyo Pattou

www.art-dept.com

Art Department



Tomoyo Pattou

www.art-dept.com

Art Department



Tomoyo Pattou

www.art-dept.com

Art Department



Tomoyo Pattou

www.art-dept.com

Art Department



Tomoyo Pattou

www.art-dept.com

Art Department



Tomoyo Pattou

www.art-dept.com

Art Department



Tomoyo Pattou

www.art-dept.com

Art Department



Tomoyo Pattou

www.art-dept.com