

Art Department



AGUA

Baja el calor, empiezan a sentirse los vientos fríos y el cielo se nubla. Pero esto no debe impedirte disfrutar de los últimos días en la playa o la montaña. Un guardarropa completo para estar bien cubierta –pero cómoda– al aire libre.

[Fotos Amanda Pratt Coordinación Courtney Marks]

Top en tejido de punto (rick), falda (Beverly & Monika); botas (LL Bean) y bufanda a rayas (Abercrombie & Fitch).

Willow Mayor

www.art-dept.com

Art Department



Willow Mayor

www.art-dept.com

Art Department



Vestido amarillo (Blumarine); suéter (Joy is Happiness) y camisola vintage (Screaming Mimi's, New York).
Asistente de coordinación: Sofía Bozikis.
Maquillaje y peinados: Willow Mayor. Modelo: Miriam Anderson (Lizbell Agency).
Producción: Toby Armitt.
Arte digital: larry@statikdigital.com

Willow Mayor

www.art-dept.com

Art Department



Top (Mary Greene);
camisa (Abercrombie
& Fitch); shorts (Polo
Ralph Lauren) y san-
dalias (Birckenstock).

Willow Mayor

www.art-dept.com

Art Department



Impermeable amarillo (Chaunpaul); calzón verde (iisli); suéter náutico a rayas (RRL) y calcetines y botas (Orvis).

Willow Mayor

www.art-dept.com

Art Department

Country club

PARA MONTAR O PASEAR, LAS PIEZAS MÁS CHIC PARA LUCIR EN EL CAMPO.
[Fotos Amanda Pratt Coordinación de moda Courtney Marks]



Chaqueta (Luca
Luca); blusa
(Y & Ke); panta-
lón (MaxMara),
y botas (Hermès).

Willow Mayor

www.art-dept.com

Art Department



Blusa roja
(Y & Kei). Tip
de belleza: para
este look, prueba
smoky eyes y
labios definidos
en rojo oscuro.

Willow Mayor

www.art-dept.com

Art Department



Chaqueta
(DKNY); chaleco
(Sass & Bide);
blusa (Y & Kei);
pantalón y som-
brero para mon-
tar (ambos, Cop-
perfields NYC), y
botas (Hermès).

Willow Mayor

www.art-dept.com

Art Department



Vestido (Paul & Joe). Peinados: John Ruidant. Maquillaje: Willow Mayor. Modelo: Katerena Alkhimova (Ford). Manicure: Ana Maria para artistsbytimothy-priano.com

Willow Mayor

www.art-dept.com

Art Department



Blusa morada
(Lauren); chaleco
en lana estampa-
da y pantalón
(ambos, Cynthia
Steffe), y broche
(RJ Graziano).

Willow Mayor

www.art-dept.com

Art Department



Willow Mayor

www.art-dept.com

Art Department



Willow Mayor

www.art-dept.com

Art Department



Willow Mayor

www.art-dept.com

Art Department



Willow Mayor

www.art-dept.com

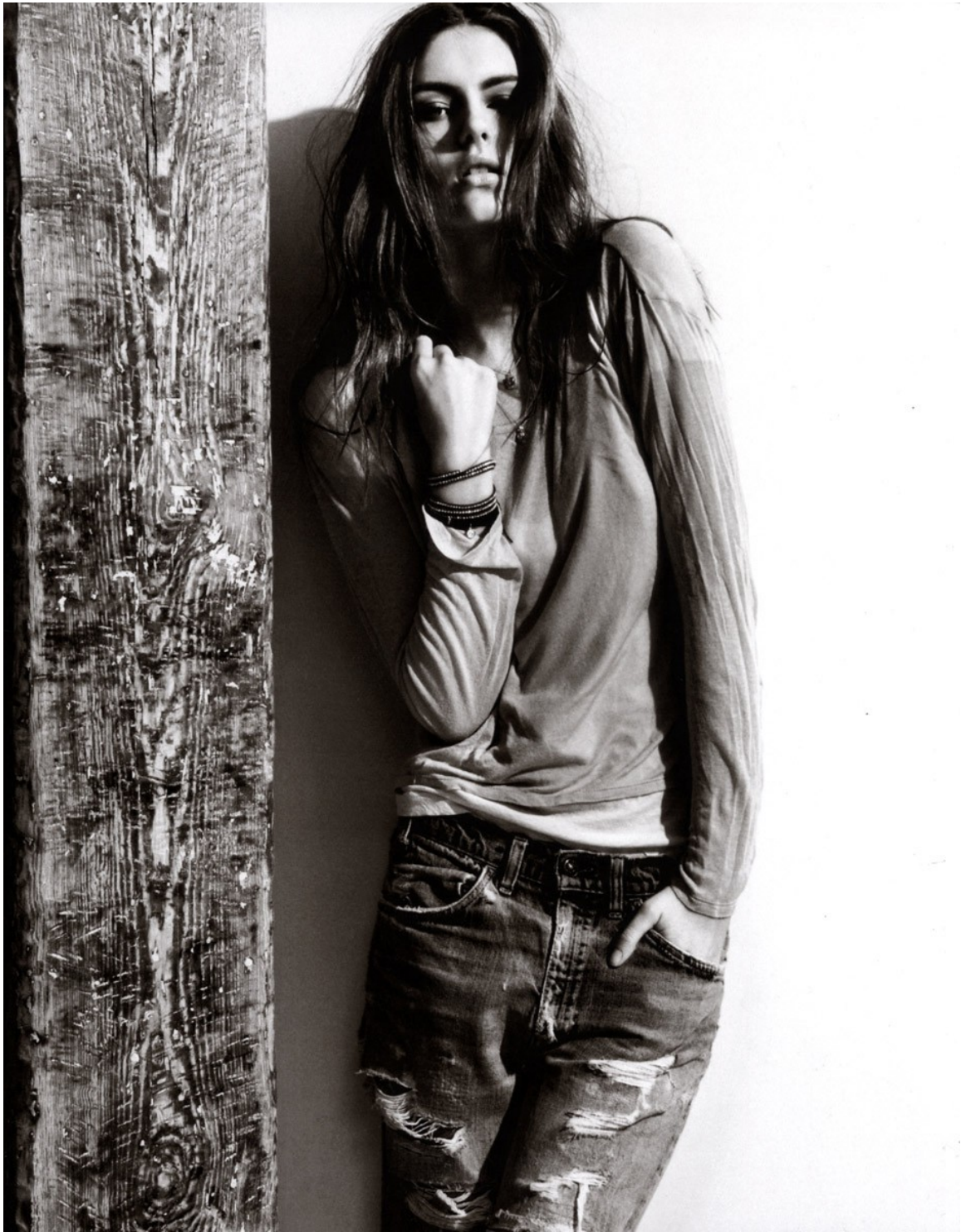
Art Department



Willow Mayor

www.art-dept.com

Art Department



Willow Mayor

www.art-dept.com

Art Department



Willow Mayor

www.art-dept.com

Art Department



Willow Mayor

www.art-dept.com

Art Department



Willow Mayor

www.art-dept.com

Art Department



Athena lleva un vestido de gasa (Betsy Johnson), estola de lentejuelas (BCBG) zapatos (Max Mara) y aretes (Fragmentos).

Willow Mayor

www.art-dept.com

Art Department



Athena usa un
vestido de raso
(Karen Walker),
medias (Wolford),
sandalias (Nina
Ricci), collares
(Lee Angel) y
anillo (Balboa).

Willow Mayor

www.art-dept.com

Art Department



Athena luce una chaqueta (Kaufmans Army & Navy), un vestido (Blugirl by Blumarine), zapatos (Eugenia Kim), medias (Look of London) y collar (RJ Graziano).
Maquillaje: Willow Mayer para Nars Cosmetics.
Peinados: Lisa Raquel para Culter NYC/Redken.
Props: Sonia Niki. Modelos: Edda (Supreme), Amanda Salvato (Next) y Athena Currey (Next).
Asistente de coordinación: Stobhan O'Brien. Arte digital: Larry @ statikdigital.com

Willow Mayor

www.art-dept.com

Art Department



De izquierda a derecha: Hada lleva un suéter y una falda azul (ambos, Moschino), otra falda blanca abajo (Blugirl by Blumarine), medias de motitas amarillas (Donna Karan) y zapatos (Luca Luca). Athena luce un vestido (Blugirl by Blumarine), sobre una falda (Moschino) y zapatos (Valentino).

Willow Mayor

www.art-dept.com

Art Department



Edda lleva puesto un top (Mary Green), una falda (Christian Lacroix), un wrap de piel (Adrienne Landau) y collar (Lee Angel).

Willow Mayor

www.art-dept.com

Art Department



Willow Mayor

www.art-dept.com

Art Department



Willow Mayor

www.art-dept.com

Art Department



Willow Mayor

www.art-dept.com

Art Department



Willow Mayor

www.art-dept.com

Art Department



Willow Mayor

www.art-dept.com

Art Department



Willow Mayor

www.art-dept.com

Art Department



Silk sleeveless top
£150 D&G; bow
headband with tulle veil
£18 Beyond Retro

Willow Mayor

www.art-dept.com

Art Department

Chiffon frilled dress
£1,377 Preen; patent
brogues £210 Church's;
'Disco Pearl' hat £249
Victoria Grant at
Harrods.com

Fashion editor:
Sarah Clark
Hair: Rebekah Forecast
at The Wall Group
Make-up: Willow Mayor
at Sarah Laird
Model: Isabel Brismar
Lind at Viva
For where to buy see
Stockists, page 324



Willow Mayor

www.art-dept.com

Art Department



Silk slip £450, cotton silk bra £210 and silk shorts £460 all Miu Miu; canvas brogues £295 Margaret Howell; hat with net veil £245 made to order Victoria Grant

Willow Mayor

www.art-dept.com

Art Department



Silk asymmetric top £110
Reiss.co.uk; silk organza
knickers £45 Stella
McCartney Lingerie;
butterfly hair clip £15
Johnnylovesrosie.co.uk

Willow Mayor

www.art-dept.com

Art Department



Willow Mayor

www.art-dept.com

Art Department



Willow Mayor

www.art-dept.com

Art Department



Willow Mayor

www.art-dept.com

Art Department



Willow Mayor

www.art-dept.com