

Art Department



Willow Mayor

www.art-dept.com

Art Department



Willow Mayor

www.art-dept.com

Art Department

'I'm lost for words when I talk about Miuccia Prada. She's another level'



Previous page silk-crepe dress by Victoria Beckham. Bracelet, Victoria's own.
This page metal cuff by Lanvin. Bracelet and ring, both Victoria's own

WATCH IT
See our exclusive video chat at eteluk.com/wite-tv



On a chilly Los Angeles morning, Victoria Beckham is in her element. The luxury American department store, Neiman Marcus, is hosting a private view of the designer's latest collection, straight from the catwalk, for 30 of its most prolific customers. The event is a lesson in PR from the master herself. Beckham enters the room - trailed by her eldest son Brooklyn and husband David, who is clutching their Chloé-clad daughter Harper - a snapshot of her picture-perfect family on display, alongside a catwalk show of the collection. I watch as Victoria snuggles up to David, puts her arm around him, rests her head on his shoulder... Afterwards, she gives a little speech - charming, informal, self-deprecating. By now, the crowd - who go on to spend thousands in pre-orders - are as in love with Victoria as they are with the clothes.

She tells them she's going to hang around for a bit, and proceeds to pose for photos and chat. As they mill, David circles the room, chasing Harper through a minefield of stilettoes, occasionally throwing her up in the air, blowing raspberries on her bare tummy or dancing with her. If any proof was needed that Victoria Beckham knows how to work her market, it is all here.

So I know that Victoria can be charming to strangers - a skill much in evidence at the trunk show - but it's not something she finds so easy with journalists. Or, more specifically, British journalists, who

Carter Smith

Art Department



Willow Mayor

www.art-dept.com

Art Department



Willow Mayor

www.art-dept.com

Art Department



สร้างความโดดเด่น
ให้ลุคกลางคืนด้วย
ชุดราตรีตระการตา
พิเศษกว่าอ็อปชั่นเดรส
ทั่วไปด้วยดีเทลปักเลื่อม
และดินทองแสนประณีต
จากฝีมือของทีโอป
ดิไซเนอร์ไทยผู้นำเอา
ความงดงามของ
สีทองมาตีความใหม่
ได้อย่างน่าชม

PHOTOGRAPHS BY
SIMON CAVE

TREASURED TINSEL

Willow Mayor

www.art-dept.com

Art Department



Willow Maynor

www.art-dept.com

Art Department



Willow Mayor

www.art-dept.com

Art Department



Willow Mayor

www.art-dept.com

Art Department



STATELY SHIMMER

ชุดกระโปรงยาวสีทอง ชุดชั้นในสีเงินในชุด
คอวีสีทอง ผ้าซาตินสีดกตัวเป็นต้นตอของชุด
จาก HOOK'S ชุดแขวนคอทอง จาก ME & RO
แขนทอง-รูปวงรีเพชรสีน้ำ จาก ELIZABETH
STREET @ LOVE ADORNED สร้อยข้อมือทอง
จาก ME & RO แหวนทองรูป จาก CONROY
AND WILCOX @ LOVE ADORNED

หน้าขวา: ชุดกระโปรงยาวคอห่านทอง หัวหมอน
เงินเดรส ผ้าไนท์การ์ดคอห่าน จาก YATIT ITTHI
สร้อยข้อมือเพชรสีทอง จาก JAMIS SAVITT
(ซื้อเพิ่มโดย Albright Fashion Library)
ผ้าไหมสีทอง จาก B & J FABRICS NYC

Willow Mayor

www.art-dept.com

Art Department



Willow Mayor

www.art-dept.com

Art Department



ELEVATED EMBELLISHMENT

ชุดเครื่องประดับคอปกแบบใหม่ตัว
เปลือกหอยสีเงินและรูปหัวใจ สีฟ้าจาก
CHAI GOLD LABEL ชิ้นส่วนของ
หอยสีเงินรูปดาว จาก LOUI LEVEN
© LOVE ADORNED

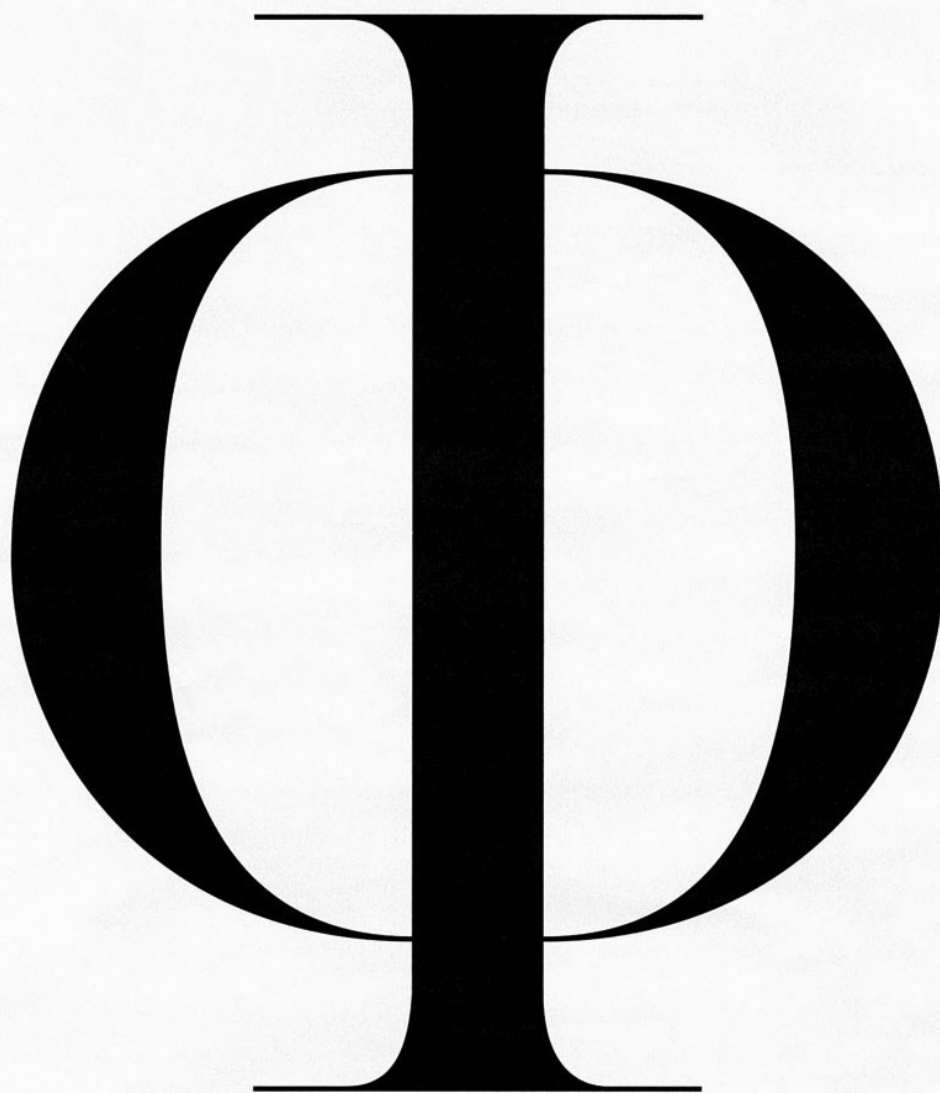
หน้าซ้าย: ชุดเครื่องประดับคอปก
คอปกแขนยาว ผักชีฟองสีดอมน้ำเงินอิตาลี
พิมพ์ลาย ตกแต่งคริสตัล จาก ISSUE

นางแบบ: Alina Baikova © Next
แต่งหน้า: Maki H © The Wall Group
ทำผม: Kerina © Art Department
ประสานงานระดับดิจิทัล: Don Brodie
© Capture This Digital
แต่งภาพ: Revolver NYC
ผู้ช่วยช่างภาพ: Michael Marquez,
Jonathan Tasker
สถานที่: Milk Studios, New York

Willow Mayor

www.art-dept.com

Art Department



Альберта ФЕРРЕТТИ

Интервью ЛИВИЯ ФЕРТ/LIVIA FIRTH
Фото CHRISTIAN FERRETTI СТИЛЬ GRO CURTIS

ОДЕЖДА: ВСЕ ALBERTA FERRETTI, ВЕСНА-ЛЕТО 2013.
МАКИЯЖ: WALTER OBAL/ATELIER MANAGEMENT. ПРИЧЕСКИ: KENNA/ART DEPARTMENT. КАСТИНГ-ДИРЕКТОР: PIERGIORGIO DEL MORO/STREETERS. МОДЕЛИ: STEFFI SOEDE,
DARIA POPOVA/NEW YORK MODELS; LAUREN TAYLOR/DNA MODELS; ELLA/FORD MODELS. АССИСТЕНТ ФОТОГРАФА: NICHOLAS ONG. АССИСТЕНТ СТИЛИСТА: ZARINA HUMAYUN.

128

Willow Mayor

www.art-dept.com

Art Department



Миниатюрная итальянка ДОКАЗАЛА миру, ЧТО ЛЮБОВЬ к платьям с оборками может легко УЖИВАТЬСЯ с умением РУКОВОДИТЬ большим бизнесом. Теперь она использует свои ЖЕНСКИЕ ЧАРЫ, чтобы привлечь внимание к проблемам ЭКОЛОГИИ в модной индустрии.

ФОТО (ПОРТРЕТ) - МАРИА АЛМАРТИ ФЕРРЕТТИ.

129

Willow Mayor

www.art-dept.com

Art Department



«В восьмидесятые МОИ
БРАТ ГОВОРИЛ: «ЗАЧЕМ тебе
ВСЬ ЭТОТ шифон! НИКТО
НЕ будет НОСИТЬ
ТВОИ НОЧНУШКИ в ОФИС!»

Willow Mayor

www.art-dept.com

Art Department



Willow Mayor

www.art-dept.com

Art Department



VOGUE
TÜRKİYE
EYLÜL ♦ 2012

458
SAYFA
BÜYÜK
MODA
SAYISI

Poppy Delevingne
FNO için
İstanbul'da

Raf Simons'la
GELECEĞİN
İLK GÜNÜ

MODERN ZAMAN KAHRAMANI
**NATASHA
POLY**

SEZONUN
OLAYI
PANTOLON
TAKIM

Karanlık yüzüyle
MERVE
BOLUÇUR

VOGUE
CEVAPLADI
Bu sonbahar neler
konuşulacak?
Gençlik takıntısı
yaşlandırır mı?
Çocuk yapmama
hakkım yok mu?
Hangi ayakkabısınız?

+25
Sonbahar saç &
makyaj trendi

Willow Mayor

www.art-dept.com

Art Department



Willow Mayor

www.art-dept.com

Art Department



Willow Mayor

www.art-dept.com

Art Department



Willow Mayor

www.art-dept.com

Art Department



Willow Mayor

www.art-dept.com

Art Department



SCUBA CHIC

VOGLIA D'ESTATE!
TESSUTI E COLORI
PESCANO DALLO
SPORT CON UN'IDEA
PRECISA: LET'S SURF

Foto: Thomas Cooksey

BODY-SUIT IN COTONE DOUBLE PATCH E SANDALI IN VERNICE, PRADA.
FASHION EDITOR VITTORIA CERCIELLO

Willow Mayor

www.art-dept.com

Art Department



Willow Mayor

www.art-dept.com

Art Department



Willow Mayor

www.art-dept.com

Art Department



Willow Mayor

www.art-dept.com

Art Department



Willow Mayor

www.art-dept.com

Art Department



Willow Mayor

www.art-dept.com

Art Department



Willow Mayor

www.art-dept.com

Art Department



Willow Mayor

www.art-dept.com

Art Department



ABITO IN RASO
CON FRANGE
GIUOCO TURCAZZI
PACIFICANTURA
CON FIORI DI
METALLO. MISS
MAGNI LUXE.

Willow Mayor

www.art-dept.com

Art Department



Willow Mayor

www.art-dept.com

Art Department



Willow Mayor

www.art-dept.com

Art Department

C
G
A
R
R
O
L
L
R
D
E
N
S

PHOTOGRAPHY: ADRIAN WEISS / ADRIANWEISS.COM
HAIR: JAZZ
MAKEUP: ANNA LIND
STYLING: CAMACE TROUSE
HAIR: KENNA



COAT BY PRADA

Willow Mayor

www.art-dept.com

Art Department



Willow Mayor

www.art-dept.com

Art Department



Willow Mayor

www.art-dept.com

Art Department



Willow Mayor

www.art-dept.com

Art Department



KANZI'S BOLDLY GENEROUS
DRESS COMBINES FLUIDITY
AND OPULENCE
Dress, Kanzi, made with
SWAROVSKI ELEMENTS

Willow Mayor

www.art-dept.com

Art Department



Willow Mayor

www.art-dept.com

Art Department



BOKSANDA ILLIĆIĆ'S DRESS
IS THE MOST STYLISH OF
ARMOUR, ITS OVERSIZED
PAILETTES STUDDED WITH
SWAROVSKI ELEMENTS
CRYSTAL PEARLS
Dress, Boksanda Illićić.
Hat, Jane Taylor. Earrings,
Anton Heunis.
All designs made with
SWAROVSKI ELEMENTS
(Swarovski-elements.com)

Willow Mayor

www.art-dept.com

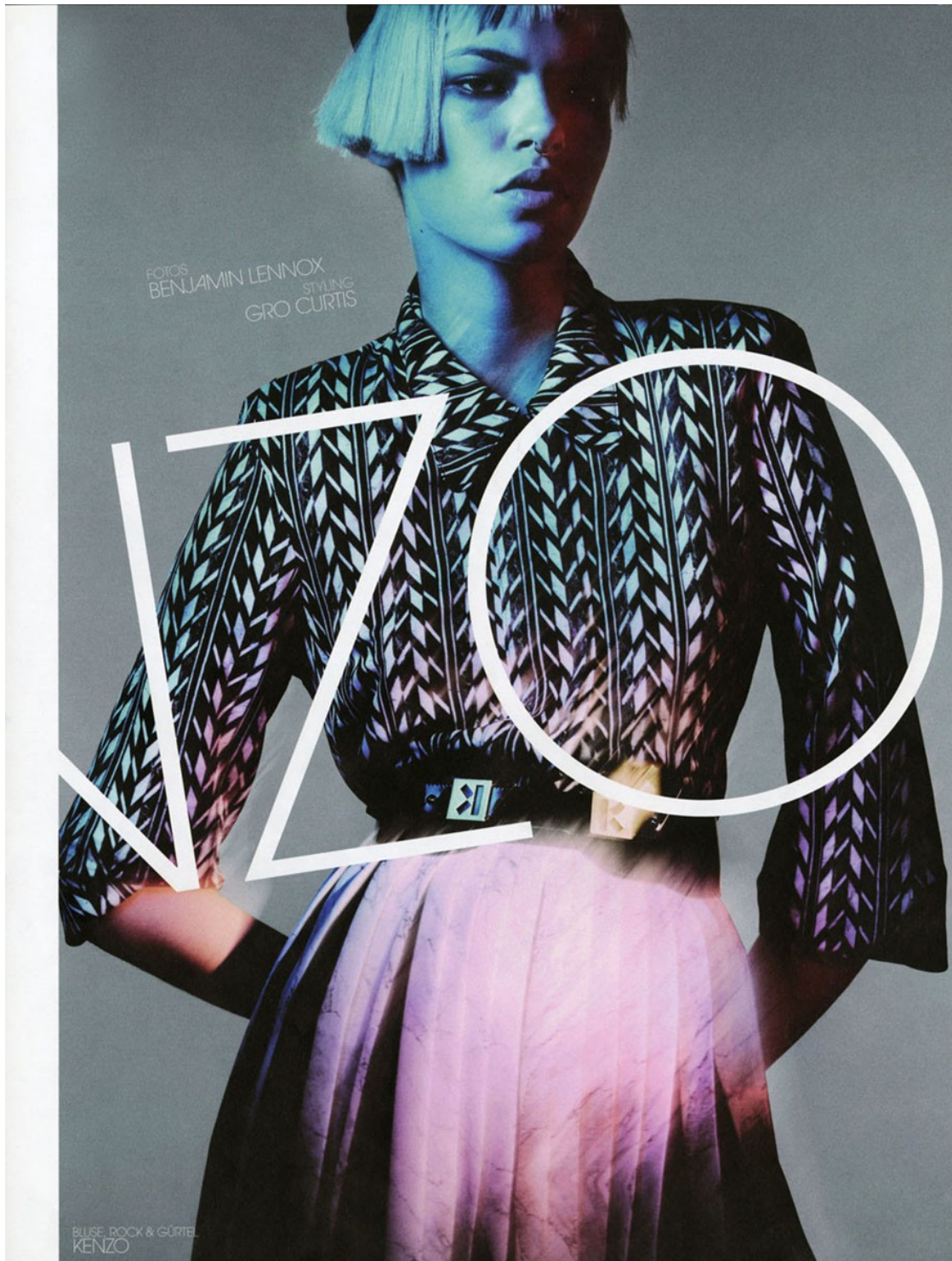
Art Department



Willow Mayor

www.art-dept.com

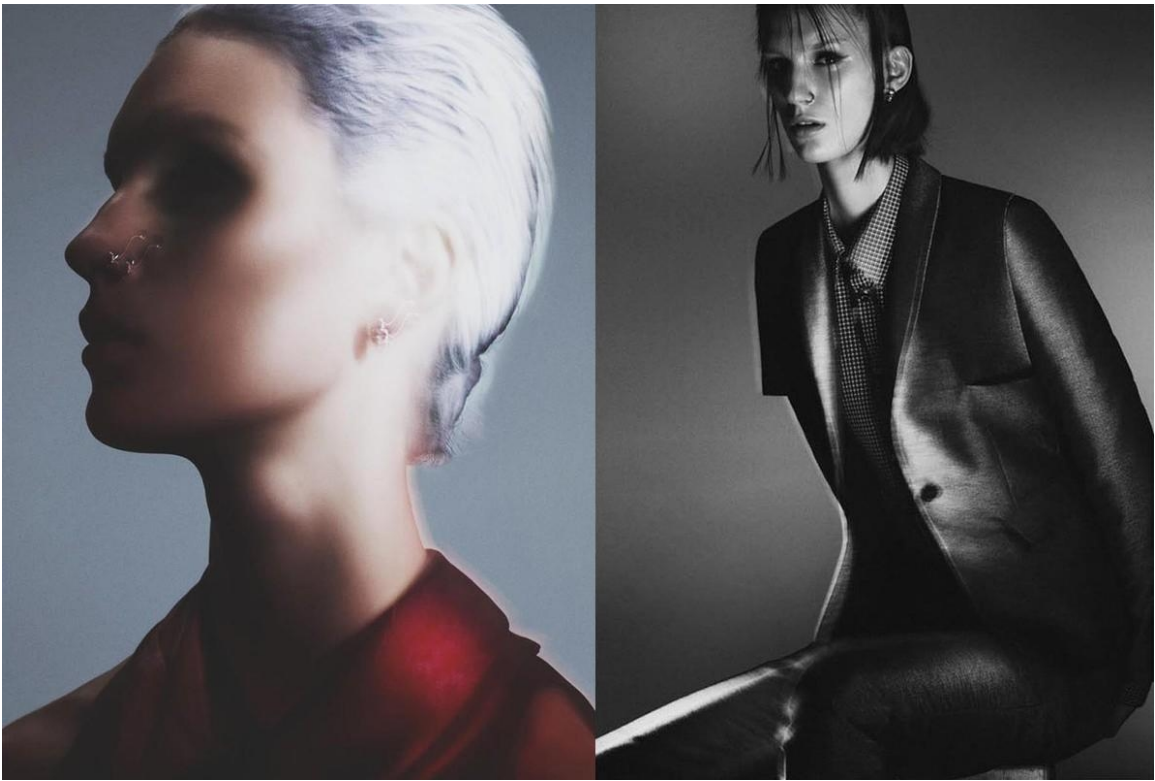
Art Department



Willow Mayor

www.art-dept.com

Art Department



Willow Mayor

www.art-dept.com

Art Department



Willow Mayor

www.art-dept.com

Art Department



OLECKA, OYER
H ANGECCAPPA, BCE
KENZO, KOLLEKTER
OCEAN-BRIMA 2012/2013
CEPCH, BCE 000
CACCIATORE, MACRA,
AND J. EDELA, WHAT
GOES AROUND COMES
AROUND, DORRKA,
ARHELLE DE PINTO,
MAKHIC, BRIGITTE
KESS-ANDERSEN, JED
BOOT, INC, DREWECHER,
KENNA, CEEAGO
JAX GRID, MOULIER,
MAGDALENA, TATI, LIDA
FOR, ROZFINNA E/NEXT
MODEL MANAGEMENT,
MARTE MEL/TMG MODELS,
VALERIA BERTIC/
WOMEN MANAGEMENT,
ACCREDITED
GOTOPMA: NEAL
FRANC, YURI TANI,
TEKHIVICKO
GSEFATOR, BLAKE RIBBEY,
ZEROPATOR, CHAD
DEEMORE, ACCREDITED
CTRUSICTA, LAUREN
RINKY, EPOLAOCEPS,
DANIEL WEINER, GORAN
MACERA,

Willow Mayor

www.art-dept.com

Art Department



Willow Mayor

www.art-dept.com

Art Department



Willow Mayor

www.art-dept.com

Art Department



Willow Mayor

www.art-dept.com

Art Department



Ballerine

Robe en cuir et tulle de soie,
Chloé. Sandales en cuir et
métal, manchette en métal,
Giuseppe Zanotti.

Willow Mayor

www.art-dept.com

Art Department



Willow Mayor

www.art-dept.com

Art Department



Willow Mayor

www.art-dept.com

Art Department



Willow Mayor

www.art-dept.com

Art Department



Willow Mayor

www.art-dept.com

Art Department



Willow Mayor

www.art-dept.com

Art Department



Willow Mayor

www.art-dept.com

Art Department



Willow Mayor

www.art-dept.com

Art Department



Willow Mayor

www.art-dept.com

Art Department



Willow Mayor

www.art-dept.com

Art Department



Willow Mayor

www.art-dept.com

Art Department



Willow Mayor

www.art-dept.com

Art Department



Willow Mayor

www.art-dept.com

Art Department



Willow Mayr

www.art-dept.com

Art Department



Willow Mayor

www.art-dept.com

Art Department



Willow Mayor

www.art-dept.com

Art Department



Willow Mayor

www.art-dept.com

Art Department



Willow Mayor

www.art-dept.com

Art Department



Willow Mayor

www.art-dept.com

Art Department



Willow Mayor

www.art-dept.com

Art Department



Willow Mayor

www.art-dept.com

Art Department



Willow Mayor

www.art-dept.com

Art Department



Willow Mayor

www.art-dept.com

Art Department



Wool/cashmere-mix coat, £935, by Max Mara. Extra-fine merino wool frilly turtleneck, £94, by John Smedley. Wool cardigan, £450, Malcolm Martin Margiela. Leather and metal harness, £640, by Giuseppa Zanotti Design. Leather boots, £1,400, and leather clutch, £695, both by Roger Vivier. 20ct yellow gold and oval garnet cabochon ring, £1,250, by Ram Rijal from Tallman Gallery at Harvey Nichols.

howtopendit.com

44

Willow Mayor

www.art-dept.com

Art Department



Willow Mayor

www.art-dept.com

Art Department



Willow Mayor

www.art-dept.com

Art Department



Willow Mayor

www.art-dept.com

Art Department



Willow Mayor

www.art-dept.com

Art Department



I GYM COUTURE I

TESSUTI SARTORIALI PER SILHOUETTE PRECISE. DALLA
TRASFORMA I GRANDI CLASSICI DELLO SPORT IN NUOVE

TUTA AL BOMBER FINO ALLA FELPA, LA MODA
PROPOSTE DI URBANWEAR FOT. BENJAMIN LENNOX

TOP IN SETA, LES COMINE,
GONNA DI GEORGETTE,
SPORTSWEAR, INTUZZO IN
SERVIZIO, CAPPUCCIO CON
WATER, BELLY BELLY,
FASHION EDITOR VICTORIA,
CERCILLO, MANNO
COLLABORATO CATTON,
LEARY E SIVINE MONSIEUR.

Willow Mayor

www.art-dept.com

Art Department



Willow Mayor

www.art-dept.com

Art Department



Willow Mayor

www.art-dept.com

Art Department



Willow Mayor

www.art-dept.com

Art Department



Willow Mayor

www.art-dept.com

Art Department



Coat Katie Eary

Willow Mayor

www.art-dept.com

Art Department



Willow Mayor

www.art-dept.com

Art Department

Dress Void of Course



51

Willow Mayor

www.art-dept.com

Art Department



Willow Mayor

www.art-dept.com

Art Department



Willow Mayor

www.art-dept.com

Art Department



ABITO CORTO IN LANA DOBLE CON MAGLINA A COSTE, VALENTINO. CUFFIA DI PAILLETTES RICAMO PELLICCIA, PRADA. PETTINATURE KENNA PER DE FACTO.

Willow Mayor

www.art-dept.com

Art Department



Willow Mayor

www.art-dept.com

Art Department



Willow Mayor

www.art-dept.com

Art Department



Willow Mayor

www.art-dept.com

Art Department



Willow Mayor

www.art-dept.com

Art Department



TOP EXILE, COSTUME TWIN SET SIMONA BARBERI;
COLLANA ROBERTO CAVALLI; BANGOLE E TELA DA MARE

Willow Mayor

www.art-dept.com

Art Department



Willow Mayor

www.art-dept.com

Art Department



Willow Mayor

www.art-dept.com

Art Department



PRISPALLE KRIZIA; COSTUME TWIN-SET SIMONA
BIERI; OROLOGIO TOY WATCH; BRACCIALI OTTAVIANI.
VNO COLLABORATO C. LEARY E F. PIOVANO.

Willow Mayor

www.art-dept.com

Art Department



Willow Mayor

www.art-dept.com

Art Department



Willow Mayor

www.art-dept.com

Art Department



Willow Mayor

www.art-dept.com

Art Department



Willow Mayor

www.art-dept.com

Art Department



Willow Mayor

www.art-dept.com

Art Department



Willow Mayor

www.art-dept.com

Art Department



Willow Mayor

www.art-dept.com

Art Department



120 TANK

Willow Taylor Miller

www.art-dept.com

Art Department



Willow Mayor

www.art-dept.com

Art Department



Willow Mayor

www.art-dept.com

Art Department

L C
O A
N L
D L
O I
N N
G



Willow Mayor

www.art-dept.com

Art Department



Willow Mayor

www.art-dept.com

Art Department



Willow Mayor

www.art-dept.com

Art Department



JACK
cardigan pringle of scotland
trousers paul smith

Willow Mayor

www.art-dept.com

Art Department



Willow Mayor

www.art-dept.com

Art Department



Willow Mayor

www.art-dept.com

Art Department

Plastified cotton shirt, €450, and matching shorts, €391, both by Iceberg from Harvey Nichols. Printed cotton/polyester jeans, €445, by Issey Miyake. Floral white gold necklace from the Red Carpet collection with pink sapphires, rubies, diamonds and tsavorites, price on request, by Chopard. White and rose gold bracelet with tsavorites, diamonds and sapphires, €41,050, and (on her right hand) white gold ring with emerald, black diamonds and yellow sapphires, €70,300, both by De Grisogono. Platinum Wonderland Butterfly ring with heart-shaped rubies, €80,000, by Boodles.

36

howtopencil.com

Willow Mayor

www.art-dept.com

Art Department

Tulle and silk blouse, from £4,725, by Chanel. Optical animal-print jersey cady jacket (worn underneath), £1,750, matching draped charmeuse top with satin details, £1,800, and matching jersey trousers with cut-out details, £690, all by Givenchy by Riccardo Tisci. Leather belt with metal detail and large horsebit closure, £490, by Gucci. White gold tassel earrings with diamonds, price on request, by Moussaieff. White gold Zip Pompon necklace with diamonds, price on request, by Van Cleef & Arpels.



Willow Mayor

www.art-dept.com

Art Department



Willow Mayor

www.art-dept.com

Art Department



Sequie-embellished linen
twill trench coat, £3,995, by
Barberry. Silk Maze dress, £864,
by Mary Katrantzou from a
selection at Browns. Cotton card
belt, from £750, by Chanel.

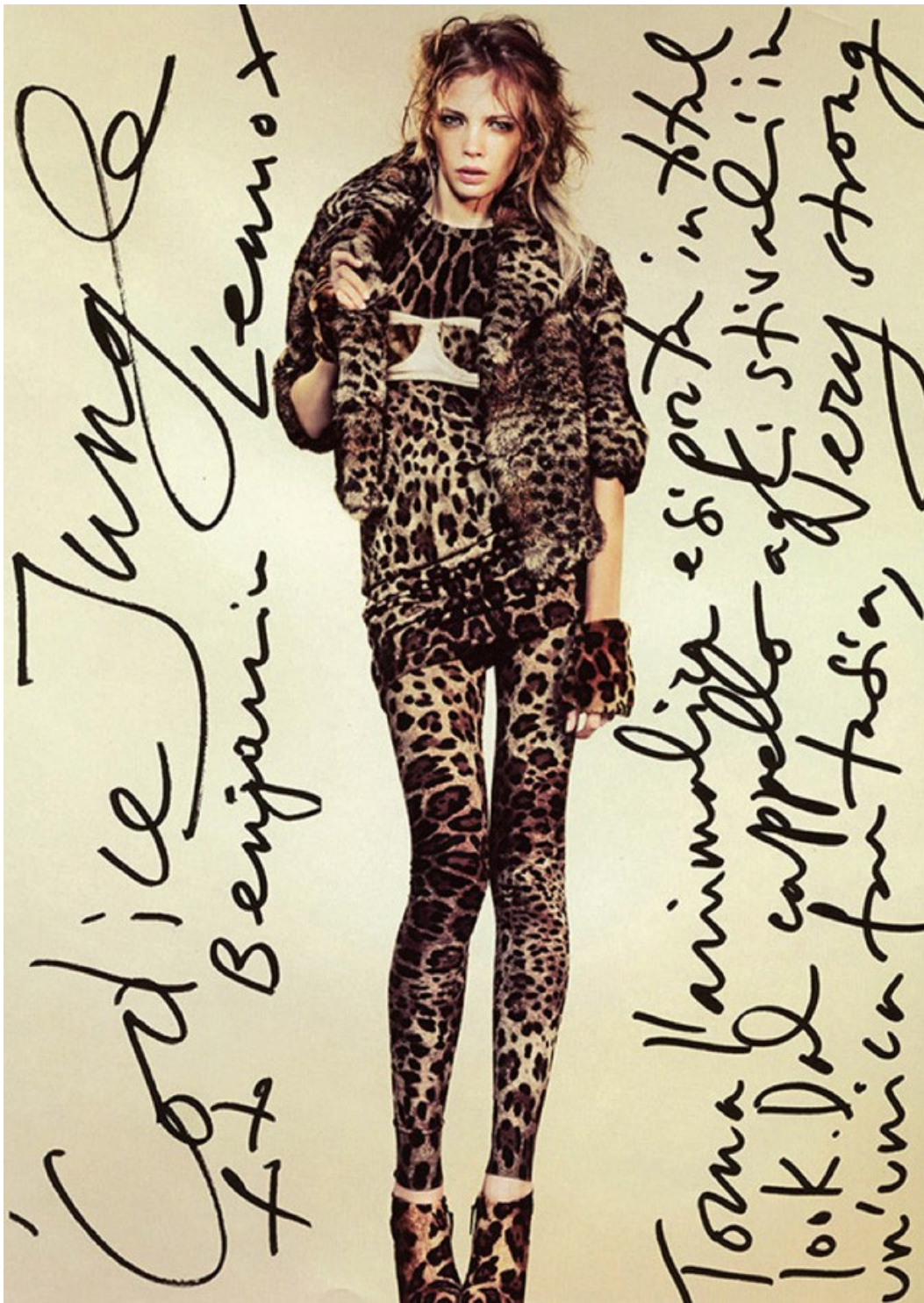
32

howtoredit.com

Willow Mayor

www.art-dept.com

Art Department



Willow Mayor

Art Department



Willow Mayor

www.art-dept.com

Art Department



Willow Mayor

www.art-dept.com

Art Department



Willow Mayor

www.art-dept.com

Art Department



Willow Mayor

www.art-dept.com

Art Department



Willow Mayor

www.art-dept.com

Art Department



Willow Mayor

www.art-dept.com

Art Department



Willow Mayor

www.art-dept.com

Art Department



Willow Mayor

www.art-dept.com

Art Department



Willow Mayor

www.art-dept.com

Art Department



Willow Mayor

www.art-dept.com

Art Department



Willow Mayor

www.art-dept.com

Art Department



Willow Mayor

www.art-dept.com

Art Department



Willow Mayor

www.art-dept.com

Art Department



Willow Mayor

www.art-dept.com

Art Department



WILLOW MAYOR

www.art-dept.com

Art Department



Willow Mayor

www.art-dept.com

Art Department



Willow Maynor

www.art-dept.com

Art Department



Willow Mayor

www.art-dept.com

Art Department



**THE
METALLIC
SKIRT**
£149 by Marks & Spencer

Cotton-mix shirt, £19.90, by *Uniqlo*. Pearl multi-strand necklace, £128, by *Butler & Wilson*. Silver and diamanté necklace, £125, by *Cosans & Regalia at Inspired Treasures*. Plastic pearl necklace, £18, by *Accessory*.
Left hand: gold flower ring, from a selection at *Pandora*, price on request. Right hand: 'HOPE' rings, as before.

Willow Mayor

www.art-dept.com

Art Department



Willow Taylor Miller

www.art-dept.com

Art Department



Willow Mayor

www.art-dept.com

Art Department



Willow Mayor

www.art-dept.com

Art Department



Willow Mayor

www.art-dept.com

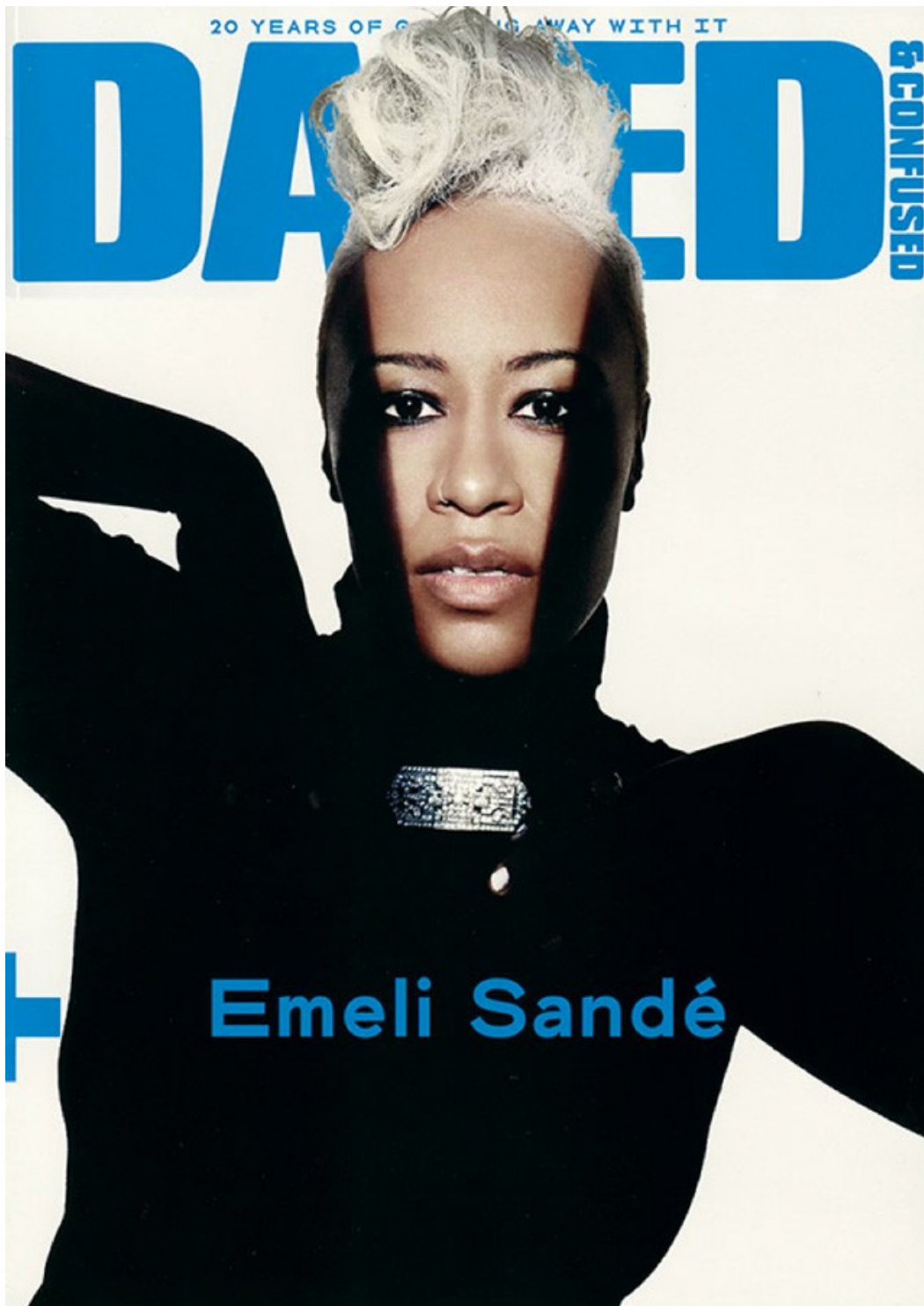
Art Department



Willow Mayor

www.art-dept.com

Art Department



Willow Mayor

www.art-dept.com

Art Department



Willow Mayor

www.art-dept.com