

Art Department

ARABIA **BA** Harper's **AAR**
The
BEAUTY
ISSUE
MAY 2025

Let's Face Time?
Photographed by ARTHUR BELEBEAU

A woman with dark hair, red lipstick, and a watch is posing for a magazine cover. She is looking up and to the side, with her hand near her face. The watch is a luxury model with a white dial and a red strap. The background is white.

Michina Koide

www.art-dept.com

Art Department



Michina Koide

www.art-dept.com

Art Department



Michina Koide

www.art-dept.com

Art Department



ARABIA **BAZAAR** Harper's

Michina Koide

www.art-dept.com

Art Department



Michina Koide

www.art-dept.com

Art Department

ARABIA ^{Harper's} BAZAAR



Michina Koide

www.art-dept.com

Art Department



ARABIA ^{Harper's} BAZAAR

Michina Koide

www.art-dept.com

Art Department



Michina Koide

www.art-dept.com

Art Department



Michina Koide

www.art-dept.com

Art Department

ARABIA Harper's BAZAAR



Michina Koide

www.art-dept.com

Art Department

ARABIA ^{Harper's} BAZAAR



Michina Koide

www.art-dept.com

Art Department



Michina Koide

www.art-dept.com

Art Department



Michina Koide

www.art-dept.com

Art Department



Michina Koide

www.art-dept.com

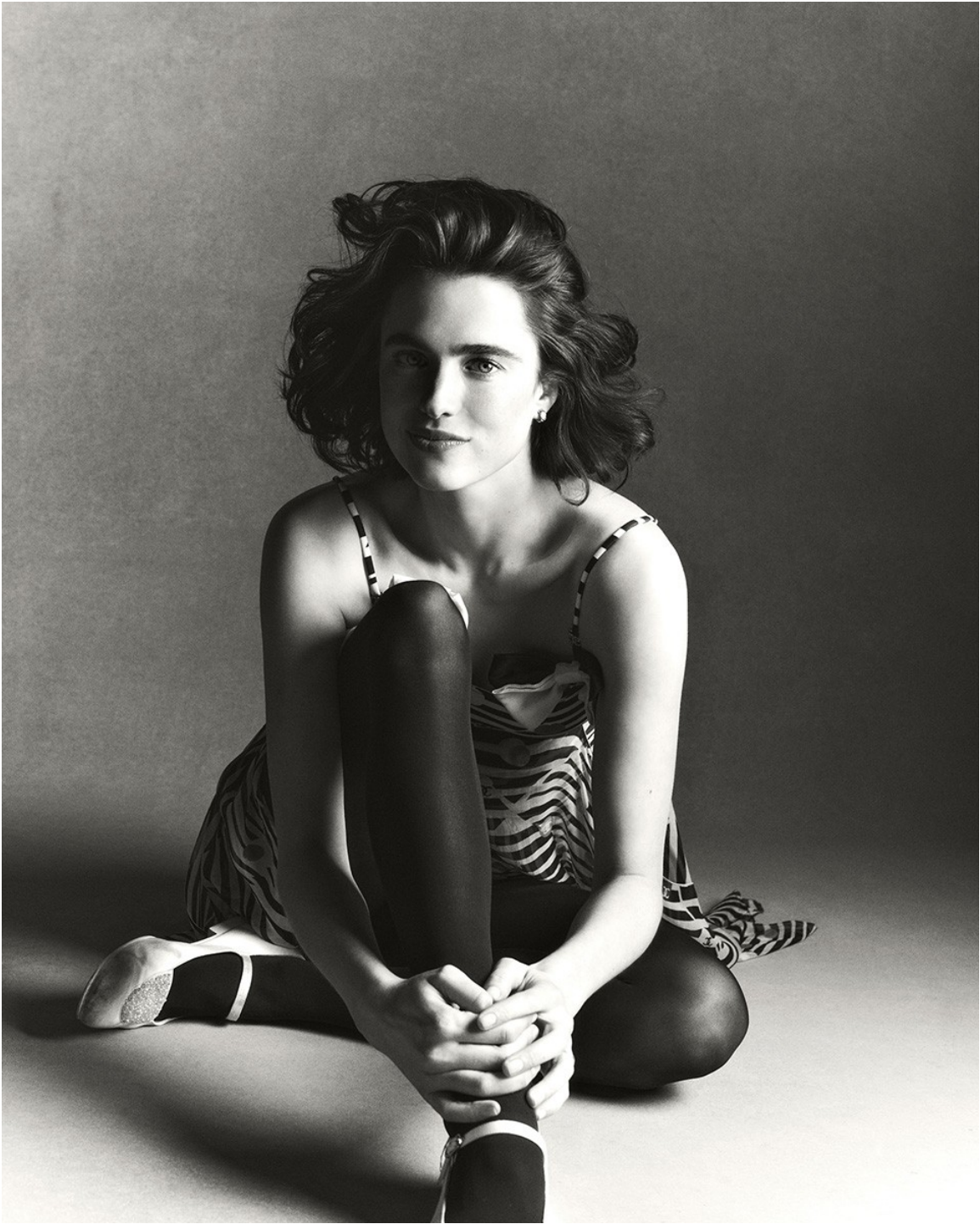
Art Department



Michina Koide

www.art-dept.com

Art Department



Michina Koide

www.art-dept.com

Art Department



Michina Koide

www.art-dept.com

Art Department



Michina Koide

www.art-dept.com

Art Department



STELLA
McCartNEY

"Nothing flatters the form like a perfectly cut suit in beautiful, sustainable fabrics, and that's become iconic to my fashion house," says McCartney. "Something that makes you feel confident and like a boss bitch, and then you can hand it down to the next generation: it never ages, it never gets old."

Model Liu Wen in
Stella McCartney; stella
mccartney.com.

WOMEN ATWORK

Endlessly inventive and inspired, a small cadre of female designers is still running the show in New York, Paris, and Milan—with their ideas of what women want to wear right now more finely attuned than ever.

Photographed by Amy Troost.

Michina Koide

www.art-dept.com

Art Department



Michina Koide

www.art-dept.com

Art Department



Michina Koide

www.art-dept.com

Art Department



Michina Koide

www.art-dept.com

Art Department



Michina Koide

www.art-dept.com

Art Department



Michina Koide

www.art-dept.com

Art Department



Michina Koide

www.art-dept.com

Art Department



Michina Koide

www.art-dept.com

Art Department



Michina Koide

www.art-dept.com

Art Department



Michina Koide

www.art-dept.com

Art Department



Michina Koide

www.art-dept.com

Art Department



Michina Koide

www.art-dept.com

Art Department



Michina Koide

www.art-dept.com

Art Department



Michina Koide

www.art-dept.com

Art Department



Michina Koide

www.art-dept.com

Art Department



Michina Koide

www.art-dept.com

Art Department



Michina Koide

www.art-dept.com

Art Department



Michina Koide

www.art-dept.com

Art Department



Michina Koide

www.art-dept.com

Art Department



Michina Koide

www.art-dept.com

Art Department



Michina Koide

www.art-dept.com

Art Department



Michina Koide

www.art-dept.com

Art Department



Michina Koide

www.art-dept.com

Art Department



Michina Koide

www.art-dept.com

Art Department



Michina Koide

www.art-dept.com

Art Department



Michina Koide

www.art-dept.com

Art Department



Michina Koide

www.art-dept.com

Art Department



Michina Koide

www.art-dept.com

Art Department



Michina Koide

www.art-dept.com

Art Department



Michina Koide

www.art-dept.com

Art Department



Michina Koide

www.art-dept.com

Art Department



Michina Koide

www.art-dept.com

Art Department



Michina Koide

www.art-dept.com

Art Department

The image is a full-page magazine cover for Bazaar. A woman, Emily Ratajkowski, is the central figure, wearing a light blue denim jacket and matching wide-leg trousers. She is standing with her legs slightly apart, looking directly at the camera. The background is a plain, light grey. The magazine title 'BAZAAR' is printed in large, black, serif capital letters across the top. Above the 'A' in 'BAZAAR', the word 'Harper's' is written in a smaller, black, serif font. Below the title, on the left side, are several headlines in a mix of bold, black, serif and italicized serif fonts: 'THE HOME ISSUE', 'Where CREATIVITY Lives', 'FASHION'S RETAIL Renaissance', and 'HIGH-TECH SKIN Perfectors'. On the right side, the name 'EMILY RATAJKOWSKI' is written in red, bold, serif capital letters, followed by 'Thinks BIG' in black, italicized serif capital letters.

Harper's

BAZAAR

THE HOME ISSUE

Where
CREATIVITY
Lives

FASHION'S
RETAIL
Renaissance

HIGH-TECH
SKIN
Perfectors

EMILY
RATAJKOWSKI
Thinks
BIG

Michina Koide

www.art-dept.com

Art Department



Michina Koide

www.art-dept.com

Art Department



Michina Koide

www.art-dept.com

Art Department



Michina Koide

www.art-dept.com

Art Department



Michina Koide

www.art-dept.com

Art Department



Michina Koide

www.art-dept.com

Art Department



Michina Koide

www.art-dept.com

Art Department



Michina Koide

www.art-dept.com

Art Department



Michina Koide

www.art-dept.com

Art Department



Michina Koide

www.art-dept.com

Art Department



Michina Koide

www.art-dept.com

Art Department



Michina Koide

www.art-dept.com

Art Department



Michina Koide

www.art-dept.com

Art Department



Michina Koide

www.art-dept.com

Art Department



Michina Koide

www.art-dept.com

Art Department



Michina Koide

www.art-dept.com

Art Department



Michina Koide

www.art-dept.com

Art Department



Michina Koide

www.art-dept.com

Art Department



Michina Koide

www.art-dept.com

Art Department



Michina Koide

www.art-dept.com

Art Department



Michina Koide

www.art-dept.com

Art Department



Michina Koide

www.art-dept.com

Art Department



Michina Koide

www.art-dept.com

Art Department



Michina Koide

www.art-dept.com

Art Department



Michina Koide

www.art-dept.com

Art Department



Michina Koide

www.art-dept.com

Art Department



Michina Koide

www.art-dept.com

Art Department



Michina Koide

www.art-dept.com

Art Department



Michina Koide

www.art-dept.com

Art Department



Michina Koide

www.art-dept.com

Art Department



Michina Koide

www.art-dept.com

Art Department



Michina Koide

www.art-dept.com

Art Department



Michina Koide

www.art-dept.com

Art Department



Michina Koide

www.art-dept.com

Art Department



Michina Koide

www.art-dept.com

Art Department



Michina Koide

www.art-dept.com

Art Department



Michina Koide

www.art-dept.com

Art Department



Michina Koide

www.art-dept.com

Art Department



Michina Koide

www.art-dept.com

Art Department

Fotografía MICAIAH CARTER
Estilismo PATTI WILSON

La moda vuelve a revalidarse como el más extraordinario *instrumento de evasión*. Esta temporada lo hace rindiéndose a los volúmenes abullonados y soberbios, a los tejidos suntuosos y a accesorios con plumas y pedrería. Un *singular universo* que BELLA HADID interpreta para 'Vogue'.



**UN MUNDO
DE FANTASIA**

Michina Koide

www.art-dept.com

Art Department



Michina Koide

www.art-dept.com

Art Department



Michina Koide

www.art-dept.com

Art Department



Michina Koide

www.art-dept.com

Art Department



Michina Koide

www.art-dept.com

Art Department



Michina Koide

www.art-dept.com

Art Department



Michina Koide

www.art-dept.com

Art Department



Michina Koide

www.art-dept.com

Art Department



Michina Koide

www.art-dept.com

Art Department



Michina Koide

www.art-dept.com

Art Department



*This page: Blazer and pins, RAF SIMONS.
Bandeau, HERMÈS. Shorts, BOYAROVSKAYA.
Socks, FALKE. Pumps, MANOLO BLAHNIK.
Opposite page: Frame a vibrant eye look with fluffy
brows. Try BAREMINERALS STRENGTH &
LENGTH SERUM-INFUSED BROW GEL (\$22).*

Michina Koide

www.art-dept.com

Art Department



Michina Koide

www.art-dept.com

Art Department



Michina Koide

www.art-dept.com

Art Department



Michina Koide

www.art-dept.com

Art Department



Michina Koide

www.art-dept.com

Art Department



Michina Koide

www.art-dept.com

Art Department



Michina Koide

www.art-dept.com

Art Department



Michina Koide

www.art-dept.com

Art Department



Michina Koide

www.art-dept.com

Art Department



Michina Koide

www.art-dept.com

Art Department



Michina Koide

www.art-dept.com

Art Department



Michina Koide

www.art-dept.com

Art Department



Michina Koide

www.art-dept.com

Art Department



Michina Koide

www.art-dept.com

Art Department



Michina Koide

www.art-dept.com

Art Department



Michina Koide

www.art-dept.com

Art Department



Michina Koide

www.art-dept.com

Art Department



Michina Koide

www.art-dept.com

Art Department



Michina Koide

www.art-dept.com

Art Department



Michina Koide

www.art-dept.com

Art Department



Michina Koide

www.art-dept.com

Art Department



Michina Koide

www.art-dept.com

Art Department



Michina Koide

www.art-dept.com

Art Department



Michina Koide

www.art-dept.com

Art Department



Michina Koide

www.art-dept.com

Art Department



Michina Koide

www.art-dept.com

Art Department



Michina Koide

www.art-dept.com

Art Department



Michina Koide

www.art-dept.com

Art Department



TIME AFTER TIME

春はカジュアルシックに。
最新ウォッチ着こなし術

コードやジャケット、Tシャツなど、
デイリーに欠かせない定番アイテムを使っ
ての、最新ウォッチ着こなし術。
スタイリッシュなウォッチがリードする
カジュアルシックな装いを、ぜひマスターして！

Photographs by Tom Schirmacher

Michina Koide

www.art-dept.com

Art Department



Michina Koide

www.art-dept.com

Art Department



Michina Koide

www.art-dept.com

Art Department



Michina Koide

www.art-dept.com

Art Department



Michina Koide

www.art-dept.com

Art Department



Michina Koide

www.art-dept.com

Art Department



金色裝飾夾克・Gucci
套頭毛衣・Jill Stuart
黃色長褲・Celine
高跟鞋・Miu Miu
耳環・Erickson Beamon

Michina Koide

www.art-dept.com

Art Department



Michina Koide

www.art-dept.com

Art Department



Michina Koide

www.art-dept.com

Art Department

ФОТО: **NICOLAS MOORE**

СТИЛЬ: **ANYA ZIUROVA**

ЦАРИЦА СТЕПЕЙ

СИЯНИЕ, РУМЯНЕЦ И АЛЫЕ ГУБЫ – ТАК
ЛЕГЕНДАРНЫЙ ВИЗАЖИСТ **ДЖЕЙМС КАЛИАРДОС**
ВИДИТ РУССКИЙ МАКИЯЖ. В СЪЕМКЕ
ДЛЯ **ALLURE** – ШЕСТЬ САМЫХ МОДНЫХ ОБРАЗОВ.

Макияж: тональное средство
Ultra HD, R230; консилер Ultra
HD Concealer, R20; скульп-
турирующая палетка Pro
Sculpting Palette, 20; румяна
HD Blush, 210; карандаш
для бровей Pro Sculpting
Brow, 20; тени в каранда-
ше Aqua Matte, M50; тени
Aqua Cream, 4, 13; тени Artist
Shadow, IS08, M540, M620;
тушь Expressive Lash, Black;
карандаш для губ Aqua Lip,
90; помада Artist Rouge,
C405; все Make Up For Ever.

Платье: Ermanno Scervino;
серьги: José & Maria
Barrera; кольца: Chanel;
кольцо: Konstantino.

108 • ALLURE СЕНТЯБРЬ 2016

СЕНТЯБРЬ 2016 ALLURE

Michina Koide

www.art-dept.com

Art Department



Michina Koide

www.art-dept.com

Art Department



Макияж: тональное средство
Ultra HD, R230; консилер
Ultra HD, R20; скульптуриру-
ющая палетка Pro Sculpting
Palette, 20; румяна HD Blush,
335, 320; карандаш для бро-
вей Pro Sculpting Brow, 20;
тени в карандаше Aqua Matic,
ME50; тени Aqua Cream, 4, 13;
тени Artist Shadow I508,
M540, M620; тушь Excessive
Lash, Black; блеск для губ
Artist Plexi-Gloss, 100P;
все Make Up For Ever.

Платье, Louis Vuitton; тон,
надетый под платье, Kenzo;
ювелира, Konstantino.

110 • ALLURE

Michina Koide

www.art-dept.com

Art Department



Макияж: тональное средство Ultra HD, R230; консилер Ultra HD, R20; скульптурирующая палетка Pro Sculpting Palette, 20; румяна HD Blush, 210; карандаш для бровей Pro Sculpting Brow, 20; тени Artist Shadow, M106, M540; блески Glitters, 1; тени Artist Shadow, M106, M540; тушь Excessive Lash, Black; фиксатор для макияжа глаз Aqua Seal; карандаш Aqua Lip, 8C; помада Artist Rouge, C405; все Make Up For Ever.

Пальто, Christian Dior; черное кольцо, Ralph Lauren; белое кольцо, Veronique Branquinho; серьги, José & María Barrera.

Модель: Dasha Gold/VNY Models. Прически: Italo Gregorio/Bryan Bantry Agency; Макияж: James Kallardos/Art + Commerce. Маникюр: Michina Koide/Art Department. Ассистент стилиста: Claudia Torres-Rondón. Продюсер: Evgenia Vorobieva.

ФОТО: NICOLAS MOORE

СЕНТЯБРЬ 2015 | CULTURE • 115

Michina Koide

www.art-dept.com

Art Department



Make getting what you
want a part of life's routine.
Break the mold, twirl on the
haters, and let your
passions take center stage.

LEOTARD, *Egal
Dance*. JEANS, *Lee®
Dream Jean*
made with up to
5% LYCRA® fiber
content. CHOKER,
Beck Jewels.
POINTE SHOES,
Misty's own

WHAT'S
sexy
FOR
AUGUST

129

Michina Koide

www.art-dept.com

Art Department



Michina Koide

www.art-dept.com

Art Department



Michina Koide

www.art-dept.com

Art Department



TAKE *flight*

DRESS: Delpozo.
POINTE SHOES
(worn throughout).
Misty's own

Soaring through the air in gala-worthy gowns or dressed down in denim that stretches to her every move, pioneering ballerina and boss businesswoman **Misty Copeland** is all the #Goals.

BY *rachel mosely*
FASHION EDITOR *james worthington demolet*
PHOTOGRAPHED BY *regan cameron*

130

Michina Koide

www.art-dept.com

Art Department



Michina Koide

www.art-dept.com

Art Department



Michina Koide

www.art-dept.com

Art Department



Michina Koide

www.art-dept.com

Art Department



Michina Koide

www.art-dept.com

Art Department



CUT ABOVE

여름에도 가죽옷을 시원하게 소화하는 방법?
새롭게 차려입은 커팅 다재다능이 있다면 가능하다.
레이저 커팅 소재 등과 클러치는 달백신더
맥퀸(Alexander McQueen), 비키니 룩은
비치 라이프(Beach Roll), 쇼츠는 제이슨 우(Jason
Wu), 벨트는 올브라이트(Albright).

Michina Koide

www.art-dept.com

Art Department



Michina Koide

www.art-dept.com

Art Department



OVER THE SHOULDER

경쾌한 크롭트 톱이 이번 시즌 트렌디 아이템인
셔츠와 만났다. 물결처럼 절개된 헐라인의 크롭트
홀아웃 셔츠는 겐조(Kenzo), 비카니 상의는
에스투아리(Estuarine), 허쉬는 LD, 샤리(샤리) LD,
Samier, 델토는 알렉산더 맥퀸(Alexander
McQueen), 필자는 알렉산더 비타(Alexis Bitar),
반자는 카레라 이 카레라(Carrera Y Carrera),
믹스 플러시는 로울프(Rouwolf).

Michina Koide

www.art-dept.com

Art Department



RUBY RED

모피 재킷과 어울릴까? 오간지 소재 위에 지수를 놓은
모피 재킷은 어울림을 위해 탄생했다.
모피를 팔개 팔라 깎아내려낸 장신갑 붉은 재킷은
펜디(Fendi), 스트랩 장신갑 비버지는 에레스(Eres),
벨트 형태의 백은 토리 버치(Tory Burch).

스타일리스트 / 윤예리(Aeri Yun)
모델 / 린지 왓슨(Lindsey Watson@The Society
Management)
헤어 / 로베르토 디 쿠아(Roberto di Cuia@L'Atelier)
메이크업 / 아사미 타구치(Asami Taguchi@Frank Rops)
메니큐어 / 민치나(Minchina@Art Department)
세트 스타일리스트 / 이사야이 와이스(Isayah Weiss)
디자인 작업 / 마리카 호니처치(Marica Honychurch)
캐스팅 디렉터 / 로스 오키사나(Ros Okusanya)
에디터 / 손기호

Michina Koide

www.art-dept.com

Art Department

TOP (on both),
Ensemble
Ungaro

IDENTICAL TWINS
AND INSTA STARS
← TAKENYA "TK"
AND CIPRIANA →
QUANN OF
URBAN BUSH BABES
FLAUNT SPRING'S
HOTTEST BEAUTY
LOOKS WITH
SLIGHT TWEAKS—
BECAUSE IT'S
ALL ABOUT ROCKING
A TREND YOUR WAY.

by LONI VENTI
Photographed by JASON KIM
Fashion Editor: JAMES
WORTHINGTON DEMOLET

ONE TREND.

TWO WAYS

splatter paint
Abstract nail art is so chic
and easy. Start with a neu-
tral base (on TK: OPI Nail
Lacquer in Black Onyx, \$10;
on Cipriana: Sally Hansen
Complete Salon Manicure in
Camouflage, \$8). Then dilute
some acrylic paint (from any
craft store) so it's slightly
runny, dip a toothbrush into
it, and with your thumb,
flick the bristles over each
nail. Clean up skin splatters
with soap and water.

Michina Koide

www.art-dept.com

Art Department

OPPOSITE PAGE: TOP,
Emilio Pucci.
EARRINGS, *Psyche*
Jewelry. THIS PAGE:
TRENCH, DRESS,
Emilio Pucci.
EARRINGS, Annelise
Michelson.

HAIR: Cesar Ramirez
for Mizani at
CrowdMGM.
MAKEUP: Eric Polito
at Art Department
using Dior Addict.
MANICURE: Michina
Koide at Art
Department using
Dior Vernis. MODELS:
TK and Cipriana
Quann/TMG.
See page 254 for
shopping
information.



TK
Quann

plugged-in pout

Electric lips are as essential as flip-flops during the summer. This season, it's all about fuchsia (like Revlon Ultra HD Lipstick in HD Azalea, \$9) and tangerine (try L'Oréal Paris Infallible Le Rouge in Always Apricot, \$10). Play with texture by swiping color with clear gloss for a juicy effect (on Cipriana) or tapping on translucent powder for a matte finish (on TK).

Michina Koide

Art Department

golden eye

Strike it rich with a winged-out eye—wear it traditionally against top lashes (like TK does) or get all trendy along lower lids (check out Cipriana's look). Either way, layer a liquid formula (like Make Up For Ever Aqua Liner in Diamond Gold, \$23) over a pencil version (try Stila Smudge Stick Waterproof Eyeliner in Gilded, \$22) for staying power.

TK
Quinn

Cipriana
Quinn

OPPOSITE PAGE:
JUMPSUIT, AT
Missoni.
EARRINGS, Fallon.
RINGS, Mason.
SCARF (blue),
Christie; (multi)
L. Erickson
USA. THIS PAGE:
DRESS, Jill
Stuart. EARRINGS,
Tianlin. SCARF, L.
Erickson USA

178

Michina Koide

www.art-dept.com

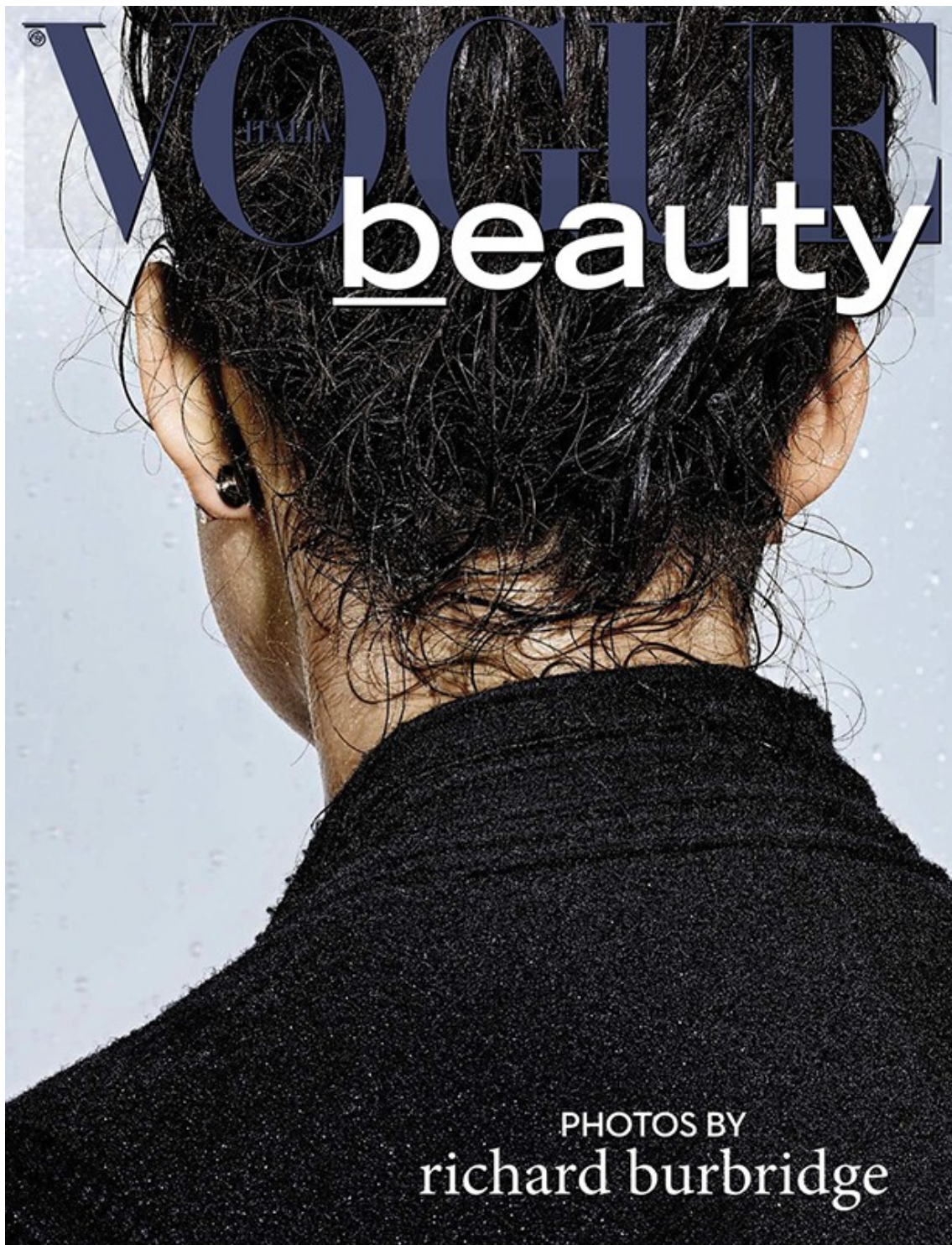
Art Department



Michina Koide

www.art-dept.com

Art Department



Michina Koide

www.art-dept.com

Art Department



Michina Koide

www.art-dept.com

Art Department



Michina Koide

www.art-dept.com

Art Department



Jacket, pants and
sandals by Gucci; (*right
hand*) set of three
bracelets by Arme De
L'Amour; (*left hand*)
set of three bracelets
and cuff by Arme De
L'Amour.

Michina Koide

www.art-dept.com

Art Department



Left: Jacket by Marc by
Marc Jacobs.
Right: Jacket and shorts
by Marc by Marc
Jacobs; sneakers by
Saint Laurent by Hedi
Slimane; bracelet by
Bottega Veneta

Michina Koide

www.art-dept.com

Art Department

Shirt and skirt by
Victoria Beckham;
sandals by Gucci; belt
bag by Newbark



Michina Koide

www.art-dept.com

Art Department



Michina Koide

www.art-dept.com

Art Department



SOFT TOUCH

The pre-fall collections make a case for lighter coats that are just as appealing on their own as they are in elegantly slouchy layers.

PHOTOGRAPHY BY JOSH OLINS
STYLING BY CLARE RICHARDSON

TWEEDY AFFAIR
A sturdy stalwart becomes sultry this season. Calvin Klein Collection wool jacquard coat and silk dress and Céline shoes. Opposite: Chanel lambskin coat.

Michina Koide

www.art-dept.com

Art Department



Michina Koide

www.art-dept.com

Art Department



Michina Koide

www.art-dept.com

Art Department



Michina Koide

www.art-dept.com

Art Department



Michina Koide

www.art-dept.com

Art Department



Michina Koide

www.art-dept.com

Art Department



DRESS, VERSACE; BRA WORN UNDERNEATH. CLAUDETTE, \$58; BACKPACK, MARC BY MARC JACOBS, \$88; NECKLACES (FROM TOP), JAMES BY JAMES SARTI, \$85; VERSACE; MAGNOLIA, \$50; BRACELETS (ON RIGHT WRIST, FROM TOP), LAROCCL, \$270; ALEXIS BITTAR, \$95 TO \$200; KATE SPADE NEW YORK, \$190; ANT ON HEELS AT FRAGMENT, \$25; FLAT METAL BANGLES, ALEXIS BITTAR, \$95 TO \$200 EACH; ID BRACELETS (FROM LEFT), MON-REVELLY, \$190; LULU'S, \$25; LULU'S, \$25; MON-REVELLY, \$190; LULU'S, \$25

the Tao of fashion

SUPERMODEL **TAO OKAMOTO** GIVES US HER GO-TO STYLE SECRETS AND DISHES ON WHAT IT'S LIKE TO KISS HUGH JACKMAN IN THIS SUMMER'S BLOCKBUSTER *THE WOLVERINE*.

BY CHARLES MANNING

I STARTED ACTING BECAUSE... "My Japanese modeling agent heard about auditions for Mariko in *The Wolverine* and really pushed me to do it. I had never wanted to act or had any acting lessons, but then I met Hugh. We did some improv and talked about my character. We just clicked."

SHOOTING A LOVE SCENE WITH HUGH MADE ME FEEL... "Nervous. But Hugh made some jokes to break the tension. It's funny, because the first time I ever saw *X-Men*, I told my boyfriend at the time how handsome I thought Hugh was. He was so jealous!"

IF I COULD HAVE ANY SUPERPOWER, IT WOULD BE... "Teleportation. I travel a lot for work, and I hate flying from one shoot to the next all the time."

I FEEL SEXIEST IN... "A pair of high-heeled wedges with a strong platform. Stilettos look cool, but they are miserable to walk in."

WHEN I DON'T KNOW WHAT TO WEAR, I THROW ON MY... "Green kenzo coat. I love green, but it's hard to find good green clothes."

MY FAVORITE DESIGNER IS... "Miharyasuhiro. He's Japanese. I have a black leather jacket from him that I wear all the time. I'm hoping I can wear one of his dresses to the premiere."

★ Check out our tablet edition for more Tao.

PHOTOGRAPHED BY JAMES MACARI
FASHION EDITOR: ISABEL DUPRE

Michina Koide

www.art-dept.com

Art Department



**BEAUTY
BONUS**
A RAINBOW MANI
SCREAMS SUMMER,
AND MINI POLISHES
(LIKE COVERGIRL
OUTLAST STAY
BRILLIANT GLOSSINIS,
\$3) MAKE THE
MULTI-HUED LOOK
EASY (AND CHEAP).



**Quiet
Riot**

(Opposite page)
DRESS: CHANEL;
SNEAKERS: GIUSEPPE
ZANOTTI DESIGN, \$625;
WINGS: STYLIST'S OWN;
BACKPACK: NASTY GAL,
\$40; NECKLACE: JAMES
BY JAMES SAVITT, \$290;
BRACELETS (ON RIGHT
WRIST, FROM LEFT), BEN
AKUM, \$100; NARROW
LABEL, \$40; ALEXIS
BITTAR, \$295 (2);
BRACELETS (ON LEFT
WRIST, FROM LEFT), \$90,
\$100, \$65, PARALUX

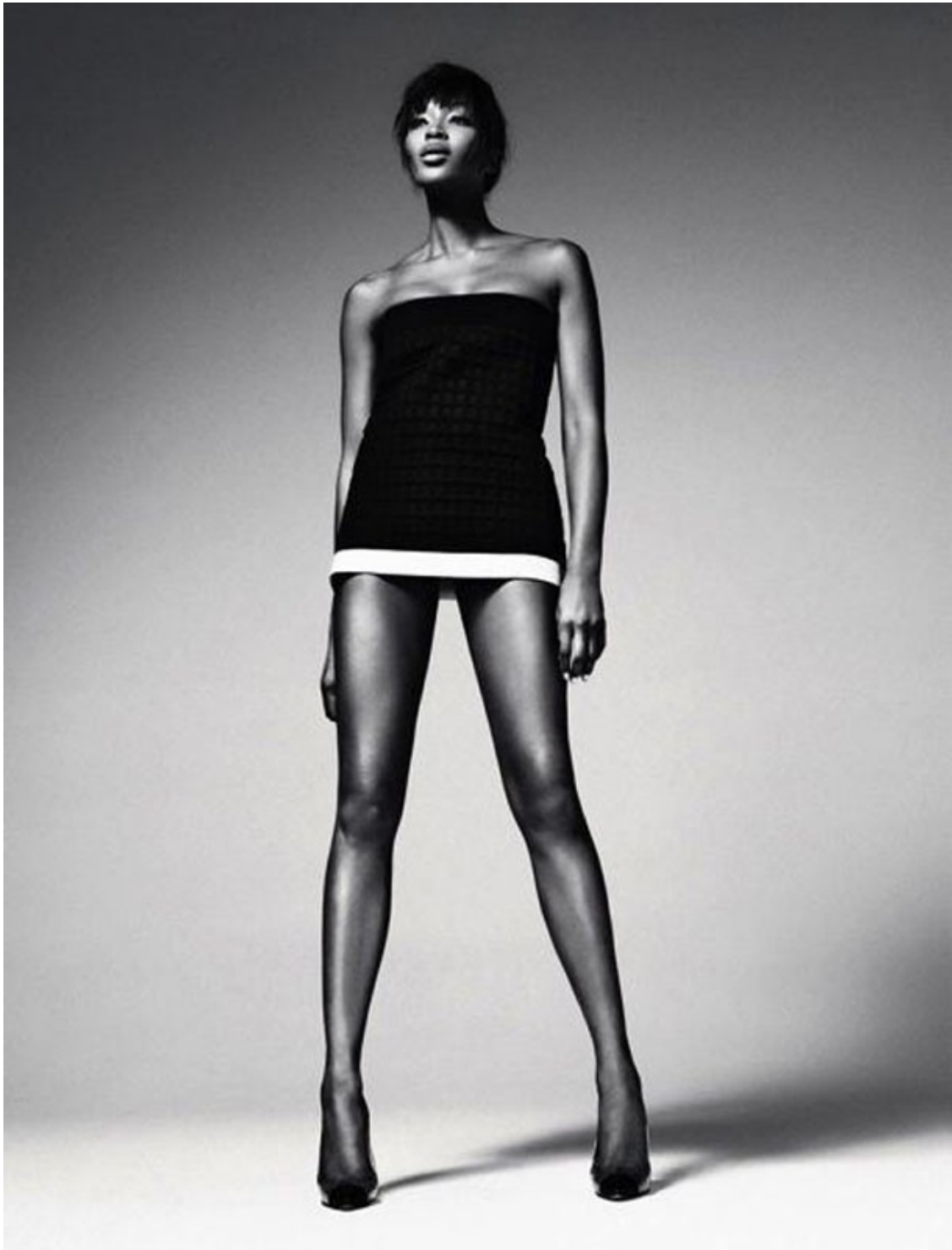
(This page)
FUR VEST: BCD MAX
AZRIA, STRIPED TOP: INC,
\$49.50; SKIRT WITH BELT,
SALVATORE
FERRAGAMO; JEANS:
HUDSON; JEANS, \$220;
SHOES: JASON WU, BAO,
GIUSEPPE ZANOTTI
DESIGN; METAL EYE
FRAMES, ALEXIS BITTAR,
\$695; NECKLACES (FROM
TOP), FALLON, \$175;
PARALUX, \$190; MARINI,
\$50; BRACELETS (FROM
LEFT), KEVIN AT
FRAGMENTS, \$115;
KELLY WEARSTLER,
\$295; KEVIN AT
FRAGMENTS, \$115; NOIR
JEWELRY, \$300; ANTON
HEUNIS AT FRAGMENTS,
\$280; PONDY JOAN
GOODMAN, \$200 (2)

151

Michina Koide

www.art-dept.com

Art Department



Michina Koide

www.art-dept.com

Art Department



Michina Koide

www.art-dept.com

Art Department



Hair stylist: Wesley O'Meara @ Brydges Mackinney
Makeup artist: Munemi Imai @ Brydges Mackinney
Manicurist: Michina Koide @ Art Department
Model: Charlotte Carey @ Wilhelmina

Michina Koide

www.art-dept.com

Art Department

Charlotte Wears top by CHROMAT, skirt by OPENING CEREMONY,
ring by MARIA BLACK and vintage earrings.



Michina Koide

www.art-dept.com

Art Department



Charlotte wears top by FRANZISKA FOX, shorts by CHROMAT,
shoes by OPENING CEREMONY, socks by WOLFORD,
bracelet by MORDEKAI BY KEN BOROCHOV
and vintage earrings.

Michina Koide

www.art-dept.com

Art Department



Michina Koide

www.art-dept.com

Art Department



Michina Koide

www.art-dept.com

Art Department



Robe en soie rebrodée de
strass, DOLCE & GABBANA.
Boucles d'oreilles, ALEXIS
BITTAR.

Michina Koide

www.art-dept.com

Art Department



Michina Koide

www.art-dept.com

Art Department



Michina Koide

www.art-dept.com

Art Department



Michina Koide

www.art-dept.com

Art Department



Michina Koide

Art Department



Bracciale e anello collezione
"Sirene" in oro rosa: Pomellato.
Abito di jacquard lana e top
ricamato, Alexander McQueen.
headpiece di piume: Philip
Treacy. Nella pagina accanto:
Bracciali e anelli collezione
"Animalier" in oro giallo:
Giovanni Raspini. Top scozzese
imbottito, Comme des Garçons.
headpiece Philip Treacy.

Michina Koide

www.art-dept.com

Art Department



Michina Koide

www.art-dept.com

Art Department



Michina Koide

www.art-dept.com

Art Department



Michina Koide

www.art-dept.com

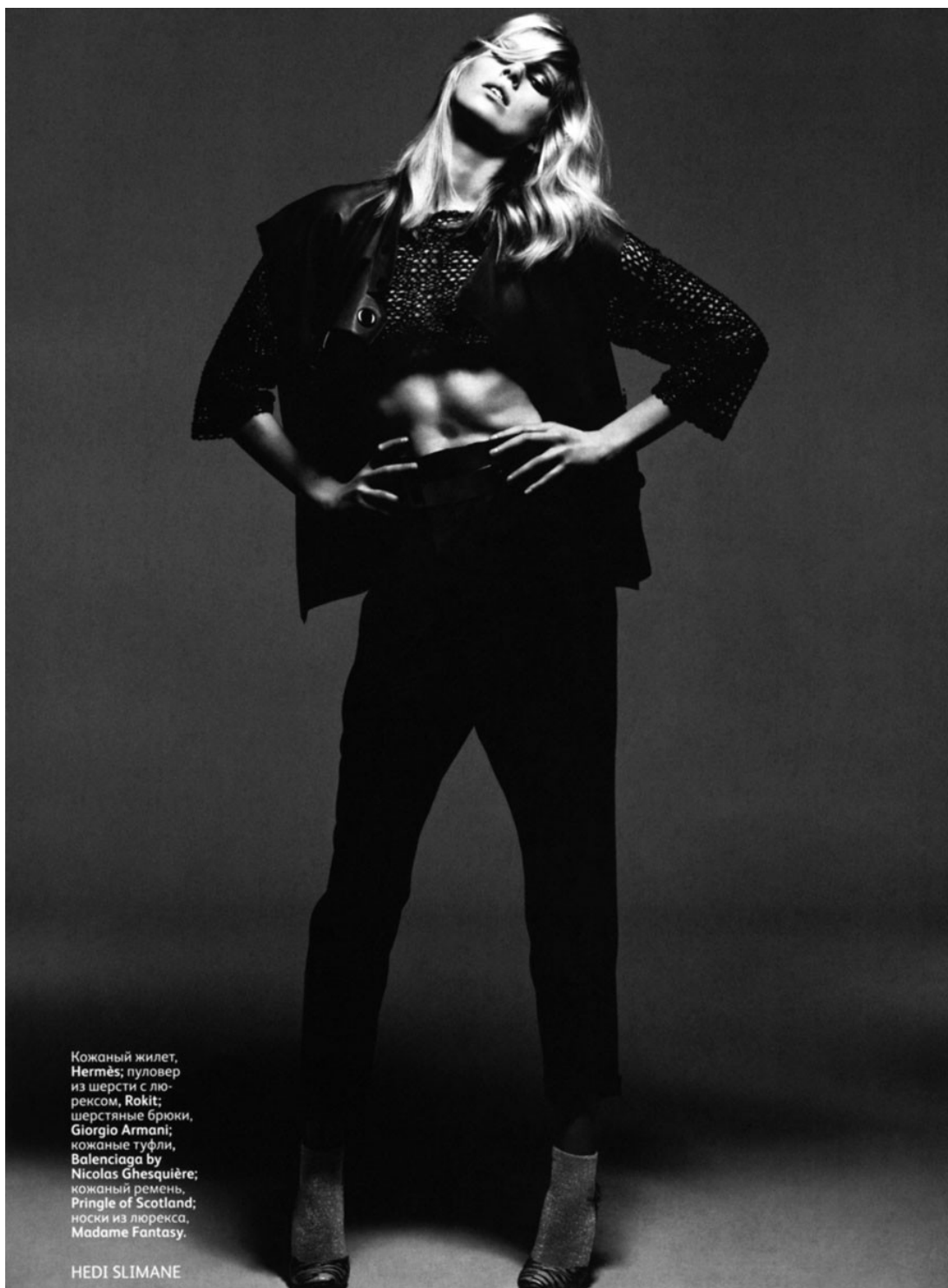
Art Department



Michina Koide

www.art-dept.com

Art Department



Кожаный жилет,
Hermès; пуловер
из шерсти с лю-
рексом, Rokit;
шерстяные брюки,
Giorgio Armani;
кожаные туфли,
Balenciaga by
Nicolas Ghesquière;
кожаный ремень,
Pringle of Scotland;
носки из люрекса,
Madame Fantasy.

HEDI SLIMANE

Michina Koide

www.art-dept.com

Art Department



棒针毛线的蓬松
层次俏皮可爱。
粗毛线背心
几何图案针织及膝裙
(均为Saca)
黑色针织帽
(Eugenia Kim)
唇膏 (Estée Lauder
纯色晶莹持久唇膏
水晶系统 #24)

Michina Koide

www.art-dept.com

Art Department



Michina Koide

www.art-dept.com

Art Department



PHOTOGRAPHY JOSH OLINS
STYLING ALASTAIR MCKIMM

Hair: Shon at Julian Watson Agency
Make-up: Sally Branka at Julian Watson Agency
Nail technician: Michina Koide at Art Department
Digital technician: Tonia Arapovic at Spring Digital
Photographic assistance: Jason Mickle and Matt Roady
Styling assistance: Zara Zachrisson, Michael Vendola,
Ger Tierney and Allison Levy
Model: Karolina Kurkova at IMG

Jumpsuit: Jil Sander.

Michina Koide

www.art-dept.com

Art Department



Michina Koide

www.art-dept.com

Art Department



Art Department



Michina Koide

www.art-dept.com

Art Department



Michina Koide

www.art-dept.com

Art Department

CHEAP THRILLS

Well-priced
CLASSICS stand
out in timeless
BLACK and
WHITE. Lace,
bows, and
polka dots
add polish to
SIMPLIFIED
shapes.

Photographs by
MIGUEL
REVERIEGO

Turn heads in an überfeminine blouse and a chic pencil skirt.
THIS PAGE: Top, \$120, Michael Stars; Skirt, \$89, Rachel Rachel Roy; Hair bow, \$145, Melamed; Earrings, \$75, Kenneth Jay Lane; Cuff, \$440, Anna Beck Designs. **OPPOSITE PAGE:** Top, \$78, and skirt, \$52, New York & Company Collection; Earrings, \$70, Kenneth Jay Lane; Belt, \$225, Michael Kors; Bag, \$900, Longchamp. Fashion editor: Katie Mossman

202

Michina Koide

www.art-dept.com

Art Department

Layer on elegance with a classic cardigan and over-the-top accessories or keep it spare and sexy in a black jersey frock.

THIS PAGE: Cardigan, \$575, **Moncler**. Shirt, \$54, **Guess**. Skirt, \$385, **Alexander Wang**. Bow, \$105, **Diane von Furstenberg**. Earrings, \$50, **Kenneth Jay Lane**. Necklaces, \$315 each, **Krizia**. Belt, **Hyde Collection**. Swarovski-crystal ring, \$355, **Erickson Beamon**.

OPPOSITE PAGE: Dress, \$290, **Diesel Black Gold**. Earrings, \$45, **Kenneth Jay Lane**. See **Where to Buy** for details. Model: Jessica Stam; hair: Danilo for Pantene; makeup: Osvaldo Salvatierra; manicure: Michina Koide for Yves Saint Laurent.

BEAUTY BAZAAR

Polish your grin to a sparkling white. Try **Supersmile** Advanced Sonic Pulse Toothbrush (\$159).



206

Michina Koide

www.art-dept.com

Art Department



Michina Koide

www.art-dept.com

Art Department



Michina Koide

www.art-dept.com

Art Department



Michina Koide

www.art-dept.com

Art Department



Michina Koide

www.art-dept.com

Art Department



Michina Koide

www.art-dept.com

Art Department



Michina Koide

www.art-dept.com

Art Department



Set them afutter in satin and sequins. **THIS PAGE:** Dress, by special order, **Atelier Versace**, 888-721-7219. Necklace, **De Beers**. Diamond bangle, **Neil Lane for De Beers**. White-gold bangle, **Bulgari**. Sandals, **Calvin Klein Collection**. **OPPOSITE PAGE:** Coat, price upon request, **Valentino Haute Couture**, 33-1-5535-1600. Earrings, **House of Lavande**. Ring (top left), **Kara Ross**. Ring (bottom left) and panther ring, **Cartier**. Diamond bangle (top) and rings (top right), **De Beers**. Flexible bangle, **Bulgari**. Diamond bangle (bottom), **Neil Lane for De Beers**. Clutch, **Swarovski**. See Where to Buy for details. Model: Angela Lindvall; hair: Teddy Charles for Orlo Salon, NYC; makeup: Christian McCulloch; manicure: Michina Koide for Chanel; set design: Piers Hanmer.

279

Michina Koide

www.art-dept.com

Art Department



ABITO A PATCHWORK DI BROCCATI
DI SETA E SANDALI RICARATI,
DOLCE & GABBANA, HEADSCARF E
FUSCIACCA, L. COVEY, BRACCIALE
DI PAILLETES, DRIES VAN NOTEN;
COLLANT WOLFORD, BAULE DI TE-
LA MONOGRAM, LOUIS VUITTON.
NELLA PAGINA SEGUENTE, ABITO
DI MOUSSELINE DI SETA STAMPA-
TA, GUCCI, FOULARD L. COVEY, CAL-
ZE MARNI, SCARPE METALLIZZA-
TE, GIVENCHY BY RICCARDO TISCI.

Michina Koide

www.art-dept.com

Art Department



Michina Koide

www.art-dept.com

Art Department



Michina Koide

www.art-dept.com

Art Department



Michina Koide

www.art-dept.com

Art Department



Michina Koide

www.art-dept.com

Art Department



Michina Koide

www.art-dept.com

Art Department



Michina Koide

www.art-dept.com

Art Department



Michina Koide

www.art-dept.com

Art Department



legendary dresses

BEST DRESSED

FASHION COMES AND GOES, BUT
SOME LOOKS HAVE SERIOUS
STAYING POWER. HERE WE
CELEBRATE 4 LITTLE BLACK
DRESSES THAT HAVE STOOD
THE TEST OF TIME

Photography Richard Burbridge
Styling Brian Molloy
Curated by Dominic Sidhu

1996
SYBILLA

154

Michina Koide

www.art-dept.com

Art Department



Michina Koide

www.art-dept.com

Art Department



Michina Koide

www.art-dept.com

Art Department



Michina Koide

www.art-dept.com

Art Department

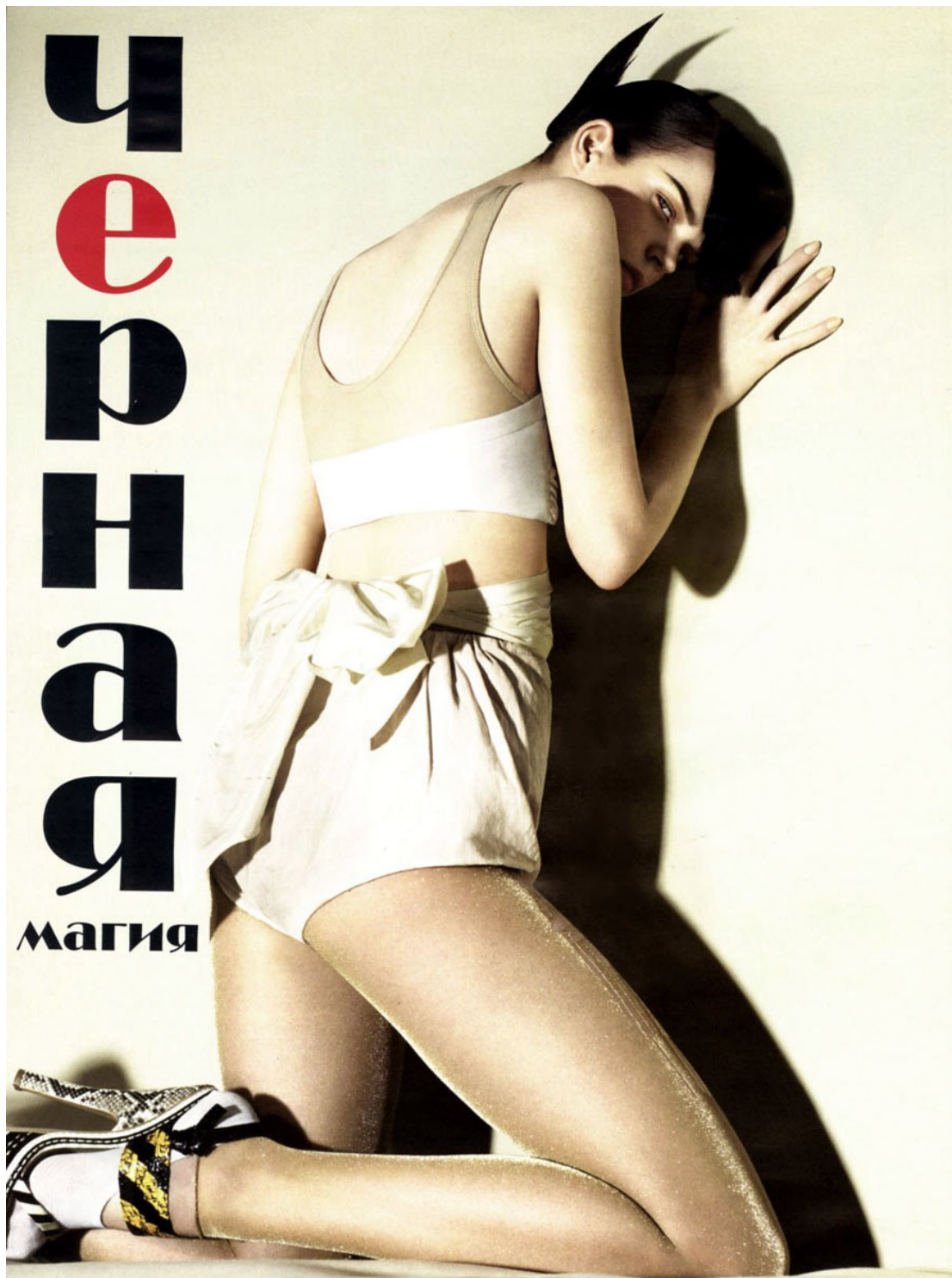


Когда-то все случается **впервые**. Этим летом мы впервые станем надевать платья с гигантскими камнями не на званый **ужин**, а на дневную прогулку. Разденемся догола, презрев стыд, и признаем **вледно-бежевый** главным цветом в гардеробе — как раньше черный. Модель **Снежана Онопка** примерила имидж рок-группы **KISS**, а фотограф **Стивен Майзел** собрал всех своих муз в одном кадре — тоже впервые. Есть с кого **брать пример!**

Michina Koide

www.art-dept.com

Art Department



Michina Koide

www.art-dept.com

Art Department



На этой странице:
брюки из хлопка,
Jean Paul Gaultier;
топ из шелка, **LIMI**
feu; ремень из замши,
Marios Schwab;
колготки, **Falke**; ком-
бинезон из эластана,
American Apparel;
туфли из кожи,
Chanel.

На странице слева:
жакет из кожи,
Hermès; шорты
из шелка, **Prada**;
воротник из органзы,
Charles Anastase;
колготки из лайкры,
Wolford; туфли
из кожи,
Viktor & Rolf.

Michina Koide

www.art-dept.com

Art Department



Michina Koide

www.art-dept.com

Art Department



Michina Koide

www.art-dept.com

Art Department



Michina Koide

www.art-dept.com

Art Department



Michina Koide

www.art-dept.com

Art Department



Michina Koide

www.art-dept.com

Art Department



Evoke the exotic with Indian inspirations and plumes. Don't forget the ruby-toned lipstick, like **Clarins** Joli Rouge in Clarins Red (\$23). Gown, headpiece, and shoes, prices upon request, and earrings, \$1,145, **Alexander McQueen**, 212-645-1797. Ring, \$16,591, **Sevan**, Judith Ann Jewels, Houston; 713-871-1074. See Where to Buy for details. Model: Masha Novoselova; hair: Esther Langham; makeup: Kabuki for Dior Beauty; manicure: Michina Koide for Chanel.

460

Michina Koide

www.art-dept.com

Art Department



Michina Koide

www.art-dept.com

Art Department



Michina Koide

www.art-dept.com

Art Department



高貴なグルーヴ感。

キュートなアップリケが施され、愛らしさと大胆さの二つの顔を併せ持つミューミューのレザージャケット。ロックなムードに、ラグジュアリーなジュエリーをプラスし、リッチでグラマラスなグルーヴ感を醸し出す。ジャケット ¥577,500 (予定価格) / MIU MIU (プラダ ジャパンカスタマーリレーションズ) トップ 参考商品 / BALMAIN (ティエリー・サニー) ネックレス (上) ¥430,500 / TIFFANY & CO. (ティファニー・アンド・カンパニー・ジャパン・インク) ネックレス (下) ¥18,018,000 / POMELLATO (ボメラート・ジャパン) バングル (右手) ¥138,600 / HERMES (エルメスジャパン) プレスレット (左手) ¥338,100 / CARTIER (カルティエ カスタマー サービスセンター) ROLEX の腕時計 / スタイルリスト私物 リング / EDDIE BORGO (www.eddiebargo.com) ヘルム / BRAVE LEATHER (www.braveleather.com) ジーンズ / TRIPP NYC (www.tripnyc.com)

Michina Koide

www.art-dept.com