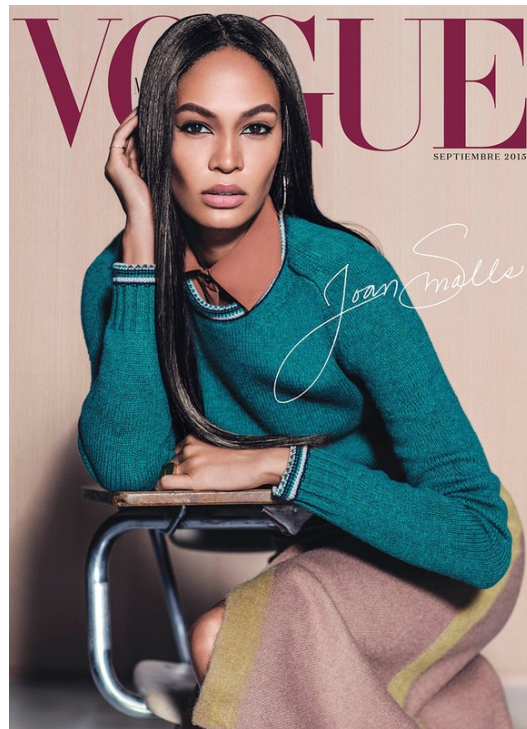


Art Department



NQ – By Request

www.art-dept.com

Art Department



NQ – By Request

www.art-dept.com

Art Department



VUELO ATÓMICO
Electrones, protones y neutrones se fijan en bordados destellantes que iluminan un cielo plagado de fantasías. Blusa con detalles en el cuello y puños y mini falda de seda, ambas de Louis Vuitton.



HORA DE SALIDA
Vestido en satén plisado con estampado y detalles metálicos, de Cucci; zapatos de cuero en estilo oxford, de Mansoni Blahnik; calcetines de Fluke; anillos de Mansani y Jennifer Fisher.

NQ – By Request

www.art-dept.com

Art Department



MEAN GIRLS
 Suéter de lana con
 cuello redondo, blusa
 en satén y falda en
 mohair y lana, todo de
 Derek Lam; zapatos
 Mary Jane en cuero,
 de Nicholas Kirkwood;
 anillo Double E, de
 Jennifer Fisher.

CARÁCTER BOYISH
 Conjunto de Salvatore
 Ferragamo; zapatos de
 Manolo Blahnik. En este
 reportaje: RENZO, Italo
 Gregorio/Bryce Banting/
 MAOJIA LI, Sir John/
 Streets con productores
 de Gabby Lander MANCUSA,
 NQ Art Dept, omicron
 CREATIVE KILLS, T&A;O;
 OSIRO EN S E, Tristram
 Steinberg, ASISTENTES
 DE FOTO, Max Bernette;
 DIGITALIZACIÓN, Polly
 Babcock; ASISTENTES DE
 MODA, Seppie Tirabassi
 y Katrina Athanasios;
 MAKEUP, Joan Smalyk/MC.



MEAN GIRLS
 Suéter de lana con
 cuello redondo, blusa
 en satén y falda en
 mohair y lana, todo de
 Derek Lam; zapatos
 Mary Jane en cuero,
 de Nicholas Kirkwood;
 anillo Double E, de
 Jennifer Fisher.



NQ – By Request

www.art-dept.com

Art Department



NQ – By Request

www.art-dept.com

Art Department



NQ – By Request

www.art-dept.com

Art Department



NQ – By Request

www.art-dept.com

Art Department



NQ – By Request

www.art-dept.com

Art Department



NQ – By Request

www.art-dept.com

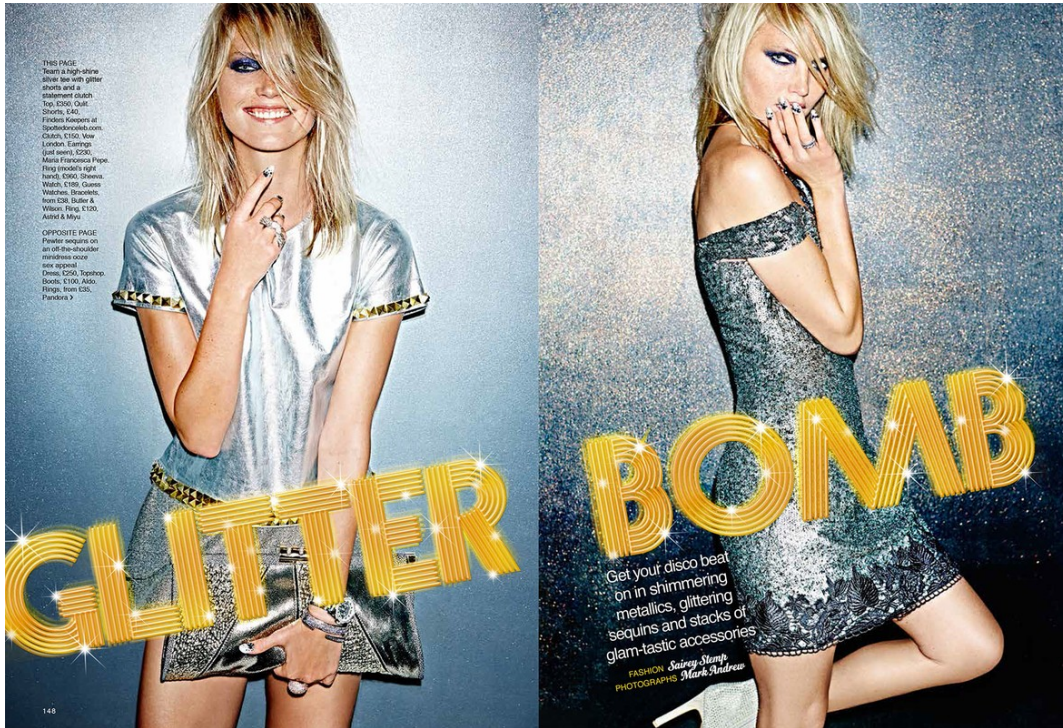
Art Department



NQ – By Request

www.art-dept.com

Art Department



NQ – By Request

www.art-dept.com

Art Department



NQ – By Request

www.art-dept.com

Art Department



NQ – By Request

www.art-dept.com

Art Department



NQ - By Request

www.art-dept.com

Art Department



NQ – By Request

www.art-dept.com

Art Department



NQ – By Request

www.art-dept.com

Art Department



NQ – By Request

www.art-dept.com

Art Department



NQ – By Request

www.art-dept.com

Art Department



NQ - By Request

www.art-dept.com

Art Department



NQ – By Request

www.art-dept.com

Art Department



NQ – By Request

www.art-dept.com

Art Department



NQ – By Request

www.art-dept.com

Art Department



NQ – By Request

www.art-dept.com

Art Department



NQ – By Request

www.art-dept.com

Art Department



NQ – By Request

www.art-dept.com

Art Department



NQ – By Request

www.art-dept.com

Art Department



NQ – By Request

www.art-dept.com

Art Department



NQ – By Request

www.art-dept.com

Art Department



NQ - By Request

www.art-dept.com

Art Department



NQ – By Request

www.art-dept.com

Art Department



NQ – By Request

www.art-dept.com

Art Department



NQ – By Request

www.art-dept.com

Art Department



NQ - By Request

www.art-dept.com

Art Department



NQ – By Request

www.art-dept.com

Art Department



NQ – By Request

www.art-dept.com

Art Department

LEO WEARS
 JACKET: GORHAM ARAMIAN
 PANTS: PATEL, JUNA WAKAMANE FROM NEW YORK VOYAGE
 JACKET: JEROME DRETTI OPTIC, CHROME RED CAPSULE
 FROM NEW YORK VOYAGE
 COORDINATION: JONAS, GIANLUIGI GEMELLI ARMANI
 GLOVES: IVYCLAY FROM ALBERTO FERRER LIBRARY
 SHOES: PRADA FOR MUSEUM

SHE'S WITH THE BAND

SILHOUETTES DON'T OFTEN EMERGE FROM THIN AIR. THE CONTOURS OF FASHION FORM OVER SEASONS, LIKE GROOVES ON A VIOLIN THAT SOUND BETTER WITH TIME. BEHOLD AND BREAK IN THE BOLD SHAPE OF THINGS TO COME.

PHOTOGRAPHY: ANTHONY MABLE
 FASHION: TOM VAN DOORPE

CLARA WEARS
 DRESS: CHANEL
 SHOES: PRADA FROM
 ALBERTO FERRER LIBRARY

ON FACE: MAKE: SHERRI BLOOM PHOTOGRAPHY:
 BY FILIP
 ON CHECKER: MAKE: BY LOUPE BLOOM

ANITA WEARS
 DRESS AND COORDINATION: SIMONE VIKEL

WINDUP: BRUCE LACAPPE FOR
 MAKE: GIANLUIGI GEMELLI ARMANI
 MAKE AND HAIR: JEFF PATRICKS
 MAKEUP: LISA BLOOM FROM NY
 ARTIST: ARI AND SARA MARGARITE (NY)
 HAIR: NAT WHEELER, LUCAS FERRER
 AND MARTIN STEIN (THE SOCIETY)

NATHAL WEARS
 JACKET: GORHAM ARMANI AND PATEL
 DRESS: PATEL FROM NEW YORK VOYAGE
 COORDINATION: JONAS DE CHATEL, GIANLUIGI GEMELLI ARMANI
 MAKEUP: SHERRI BLOOM PHOTOGRAPHY: LISA BLOOM
 FROM NY
 HAIR: ARI AND SARA MARGARITE (NY)
 HAIR: NAT WHEELER, LUCAS FERRER
 AND MARTIN STEIN (THE SOCIETY)

NQ – By Request

www.art-dept.com

Art Department



HAIR: JEFFREY MATHIAS
MAKEUP: JESSICA WILSON
STYLING: JESSICA WILSON
DRESS: JESSICA WILSON
SHIRT: JESSICA WILSON
PANTS: JESSICA WILSON
SHOES: JESSICA WILSON
ACCESSORIES: JESSICA WILSON

HAIR: JEFFREY MATHIAS
MAKEUP: JESSICA WILSON
DRESS: JESSICA WILSON
SHIRT: JESSICA WILSON
PANTS: JESSICA WILSON
SHOES: JESSICA WILSON
ACCESSORIES: JESSICA WILSON



NQ – By Request

www.art-dept.com

Art Department



NQ – By Request

www.art-dept.com

Art Department



NQ - By Request

www.art-dept.com

Art Department



NQ - By Request

www.art-dept.com

Art Department



NQ – By Request

www.art-dept.com

Art Department



ÍCONO DE PLATA
 Chamarras XXI de piel
 medallada de Alexander
 Wang; tejido de baño de
 neopreno, de Patagonia;
 brazaletes elasticos, de
 Louis; cuffs de piel con
 perlas, de Chanel; aretes
 y anillos, todo de Ozone.



TU SEGUNDA PIEL
 El punk puede ser muy
 sensual. Trajea castillo,
 de Lisa Marie Fernandez;
 gabardina transparente de
 PVC de Valentino; collar
 con dije, de Van Cleef &
 Arpels; collar de cadenas,
 de Lizzy; foradoro; aretes
 y anillos, todo de Ozone;
 medias más, todo de Aon.



NUEVO RESURGIR
 Top metálico, de Hugo
 Boss; líquida tejido, de
 Missoni; aretes de oro y
 anillos, todo de Ozone.
 En sus brazos: maquillaje,
 Alexa Rodolfo/Delicta; te-
 peinado, Dreyck Heidem
 para SE Management;
 asistentes, Seth Moore,
 Ric Tostui, Luca Galasso,
 Andrea Naves, Bowen
 Radley, Robert Eggers
 y Demetris Fordham;
 casting, Paul Isaac;
 retoque digital, Chris
 Roemer; diseño de set,
 Matthew Betmaleck/
 Delicta; producción
 en set, Lauren Brown/
 Delicta; modelo,
 Samantha Gaudinier/
 IMG Models London.

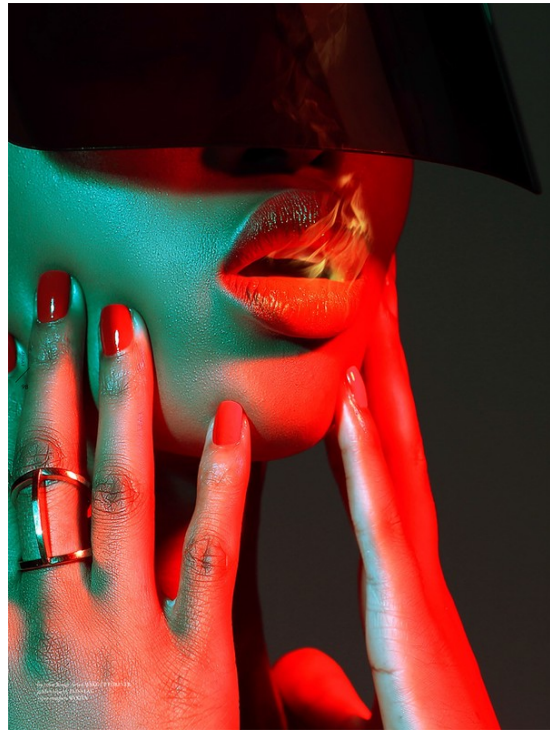


LUZ MAGNÉTICA
 Chamarras fluorescente de
 Wanda byline; leguini de
 Mayra; bikini; collar con
 eslabones, de Parafallo;
 gargantilla oversize, de
 Giuseppe Zanotti Design;
 brazaletes/estructurados
 de Lolo Sadrage; anillos
 con perlas, de Ozone.

NQ – By Request

www.art-dept.com

Art Department



NQ – By Request

www.art-dept.com

Art Department



AÑOS LOCOS

La década de "El gran Gatsby" y aquellas flappers que hicieron de los flecos, transparencias y brillos un canto de libertad revive hoy. ¡Bienvenidos a los 20's!

Fotógrafo: ADAM WHITEHEAD. Realización: ALEXA RODRIGO
Estilista: MARY FELLOWES. Supervisión: MELING ALVAREZ



NQ – By Request

www.art-dept.com

Art Department



NQ – By Request

www.art-dept.com