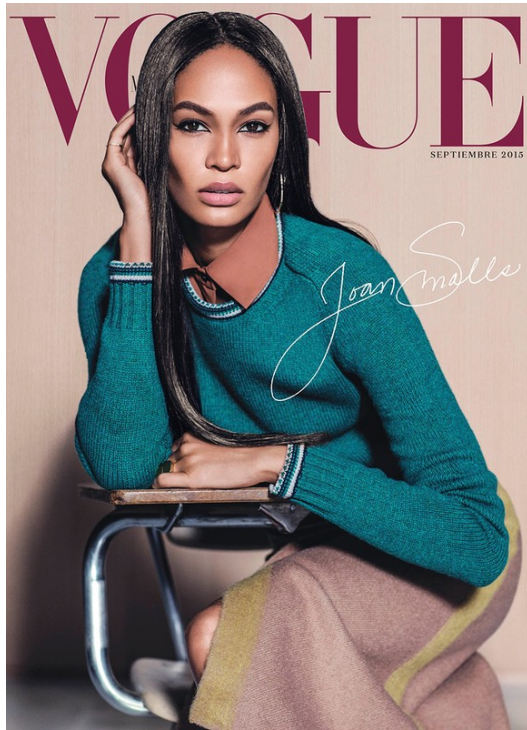


Art Department



NQ – By Request

www.art-dept.com

Art Department



NQ – By Request

www.art-dept.com

Art Department



NQ – By Request

www.art-dept.com

Art Department



NQ – By Request

www.art-dept.com

Art Department



NQ – By Request

www.art-dept.com

Art Department



NQ – By Request

www.art-dept.com

Art Department



NQ – By Request

www.art-dept.com

Art Department



NQ – By Request

www.art-dept.com

Art Department



NQ – By Request

www.art-dept.com

Art Department



NQ – By Request

www.art-dept.com

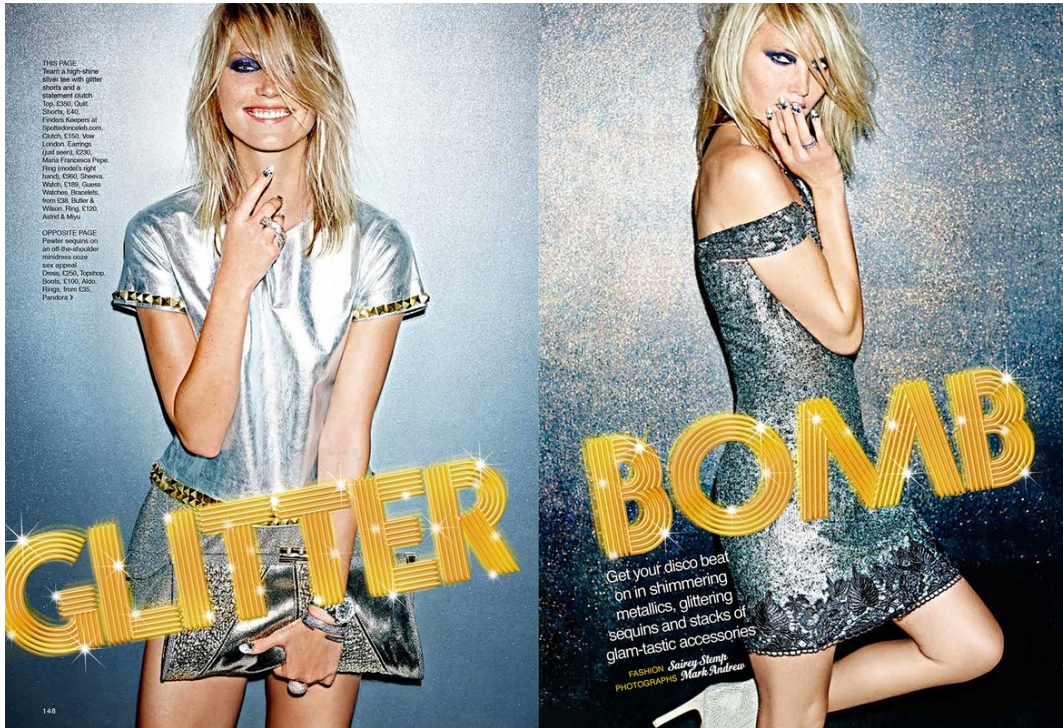
Art Department



NQ – By Request

www.art-dept.com

Art Department



NQ – By Request

www.art-dept.com

Art Department



NQ – By Request

www.art-dept.com

Art Department



NQ – By Request

www.art-dept.com

Art Department



NQ – By Request

www.art-dept.com

Art Department



NQ – By Request

www.art-dept.com

Art Department



NQ – By Request

www.art-dept.com

Art Department



NQ – By Request

www.art-dept.com

Art Department



NQ – By Request

www.art-dept.com

Art Department



NQ – By Request

www.art-dept.com

Art Department



NQ – By Request

www.art-dept.com

Art Department



NQ – By Request

www.art-dept.com

Art Department



NQ – By Request

www.art-dept.com

Art Department



NQ – By Request

www.art-dept.com

Art Department



NQ – By Request

www.art-dept.com

Art Department



NQ – By Request

www.art-dept.com

Art Department



NQ – By Request

www.art-dept.com

Art Department



NQ – By Request

www.art-dept.com

Art Department



NQ – By Request

www.art-dept.com

Art Department



NQ – By Request

www.art-dept.com

Art Department



NQ – By Request

www.art-dept.com

Art Department



NQ – By Request

www.art-dept.com

Art Department



NQ – By Request

www.art-dept.com

Art Department



NQ – By Request

www.art-dept.com

Art Department



NQ – By Request

www.art-dept.com

Art Department



NQ – By Request

www.art-dept.com

Art Department



NQ – By Request

www.art-dept.com

Art Department



NQ – By Request

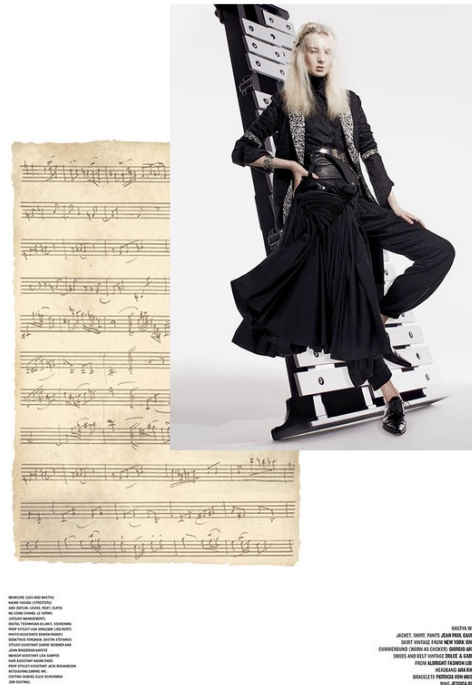
www.art-dept.com

LEVI WEISS
JACQUE KRAMER ARCADE
PATRY VIREUX JOHN MARRASSE FROM NEW YORK THROUGH
DANTE LARONDO VANCE D'ARCY FROM THE GARDENS
FROM NEW YORK THROUGH
CONTEMPORARY ARTISTS AT SOCIETY ARCADE ARCADE
GLOVED INTIMATE FROM ALBERT FASHION LIBRARY
HOLLY FORTUNE FROM HOLLAND

SHE'S WITH THE BAND

SILHOUETTES NOT OFTEN EMERGE FROM THIN AIR. THE CONTOURS OF FASHION
FORM OVER SEASONS, LIKE GROOVES ON A VIOLIN THAT SOUND BETTER WITH TIME.
BEHOLD AND BREAK IN THE BOLD SHAPE OF THINGS TO COME

PHOTOGRAPHY ANTHONY MAULE
FASHION TOM VAN DOORPE



www.art-dept.com

Art Department



HAIR: JEFFREY MATHIS
MAKEUP: JESSICA BROWN
STYLING: JESSICA BROWN
DRESS: JESSICA BROWN
JACKET: JESSICA BROWN
SHOES: JESSICA BROWN
ACCESSORIES: JESSICA BROWN



HAIR: JEFFREY MATHIS
MAKEUP: JESSICA BROWN
DRESS: JESSICA BROWN
FLUTE: JESSICA BROWN
ACCESSORIES: JESSICA BROWN



NQ – By Request

www.art-dept.com

Art Department



NQ – By Request

www.art-dept.com

Art Department



NQ – By Request

www.art-dept.com

Art Department



NQ – By Request

www.art-dept.com

Art Department



NQ – By Request

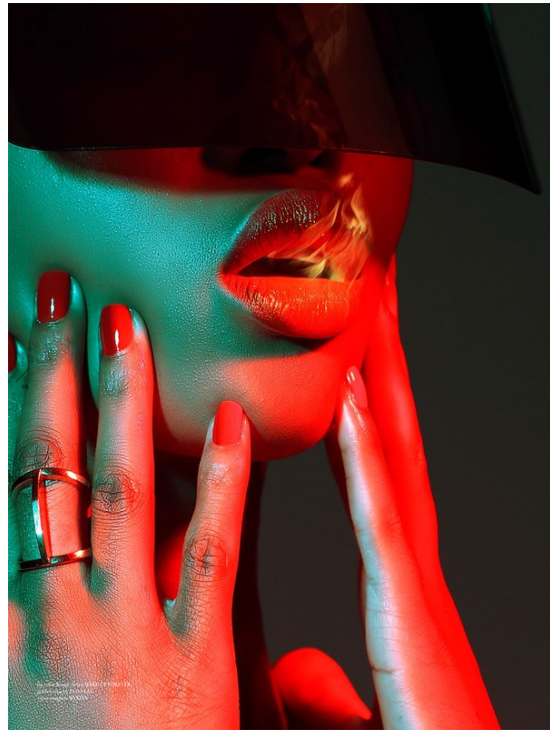
www.art-dept.com

Art Department



NQ – By Request

www.art-dept.com

[illegible]

www.art-dept.com

Art Department



AÑOS LOCOS

La década de "El gran Gatsby" y aquellas flappers que hicieron de los flecos, transparencias y brillos un canto de libertad revive hoy. ¡Bienvenidos a los 20's!

Fotógrafo: ADAM WHITEHEAD. Realización: ALEXA RODRIGO
Estilista: MARY FELLOWES. Supervisión: MELING ALVAREZ



IVÁN DE MIRADAS
Perlas, vision y un toque
más para ser la estrella.
Vestido de seda y encaje
con detalles de cuero, de
BICHMAZAR; abrigo
de visón, de Helen Yarnall;
cuello de cuero con hebilla
en metal, de Fenton Fallow;
collar de perlas en tono
blanco, de Tom Blom.

NQ – By Request

www.art-dept.com

Art Department



NQ – By Request

www.art-dept.com