

Art Department



Ben Watts

www.art-dept.com

Art Department



Ben Watts

www.art-dept.com

Art Department



Ben Watts

www.art-dept.com

Art Department



Ben Watts

www.art-dept.com

Art Department



Ben Watts

www.art-dept.com

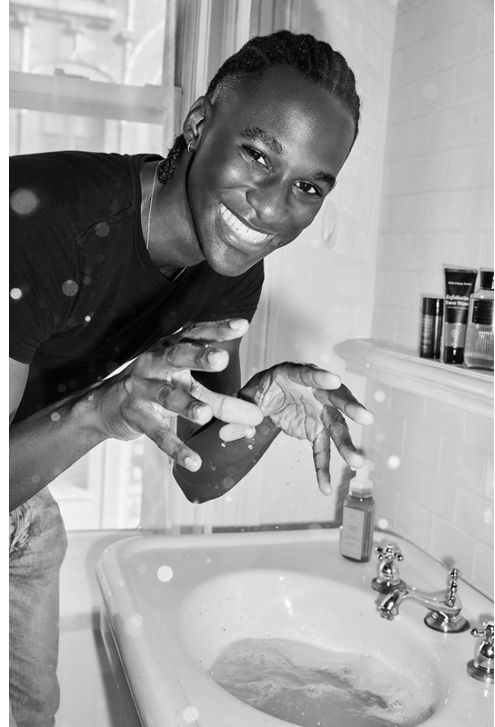
Art Department



Ben Watts

www.art-dept.com

Art Department



Ben Watts

www.art-dept.com

Art Department



Ben Watts

www.art-dept.com

Art Department



Ben Watts

www.art-dept.com

Art Department



Ben Watts

www.art-dept.com

Art Department



Ben Watts

www.art-dept.com

Art Department



Ben Watts

www.art-dept.com

Art Department



Ben Watts

www.art-dept.com

Art Department



Ben Watts

www.art-dept.com

Art Department



Ben Watts

www.art-dept.com

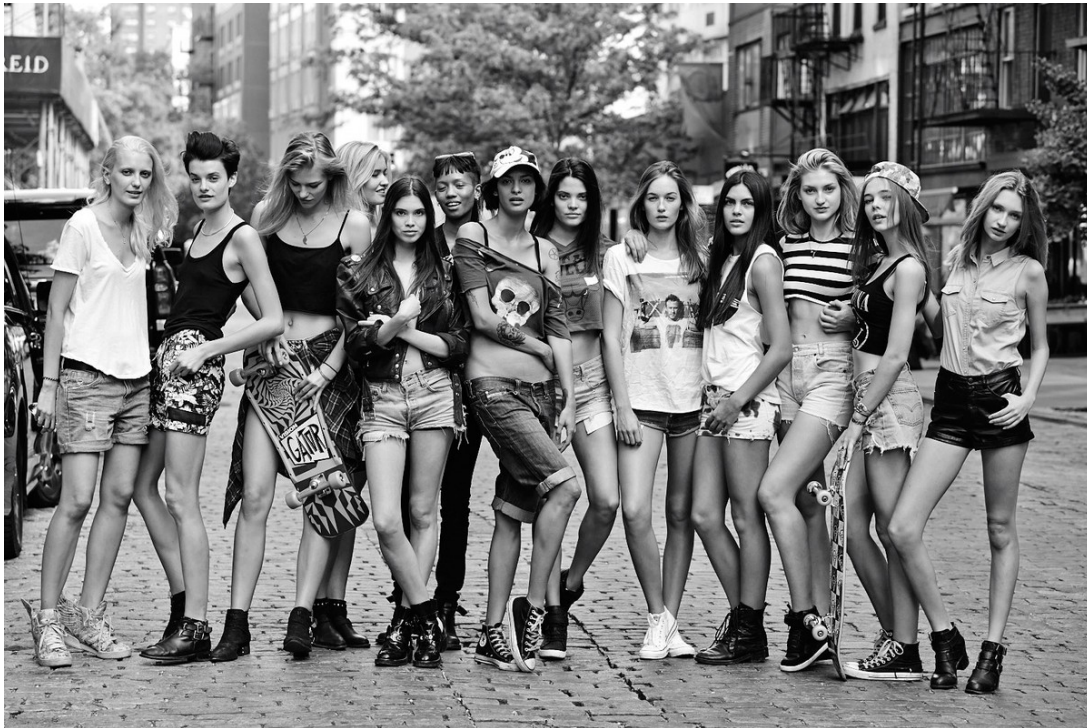
Art Department



Ben Watts

www.art-dept.com

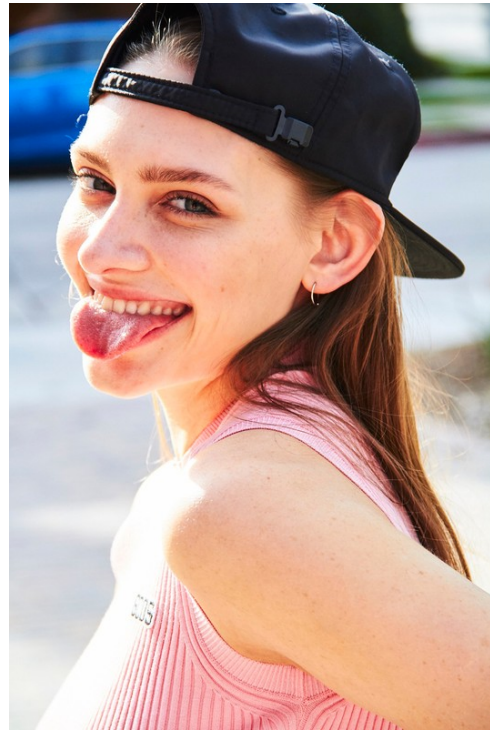
Art Department



Ben Watts

www.art-dept.com

Art Department



Ben Watts

www.art-dept.com

Art Department



Ben Watts

www.art-dept.com

Art Department



Ben Watts

www.art-dept.com

Art Department



Ben Watts

www.art-dept.com

Art Department



Ben Watts

www.art-dept.com

Art Department



Ben Watts

www.art-dept.com

Art Department



Ben Watts

www.art-dept.com

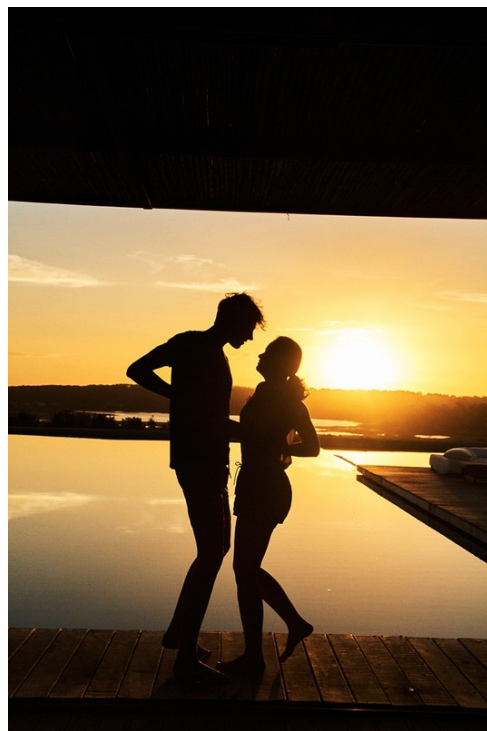
Art Department



Ben Watts

www.art-dept.com

Art Department



Ben Watts

www.art-dept.com

Art Department



Ben Watts

www.art-dept.com

Art Department



Ben Watts

www.art-dept.com

Art Department



Ben Watts

www.art-dept.com

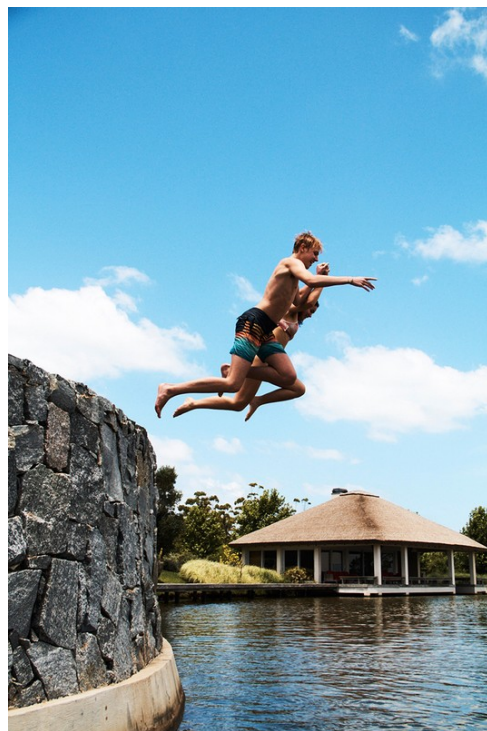
Art Department



Ben Watts

www.art-dept.com

Art Department



Ben Watts

www.art-dept.com

Art Department



Ben Watts

www.art-dept.com

Art Department



Ben Watts

www.art-dept.com

Art Department



Ben Watts

www.art-dept.com

Art Department



Ben Watts

www.art-dept.com

Art Department



Ben Watts

www.art-dept.com

Art Department



Ben Watts

www.art-dept.com

Art Department



Ben Watts

www.art-dept.com

Art Department



Ben Watts

www.art-dept.com

Art Department



Ben Watts

www.art-dept.com

Art Department



Ben Watts

www.art-dept.com

Art Department



Ben Watts

www.art-dept.com

Art Department



Ben Watts

www.art-dept.com

Art Department



Ben Watts

www.art-dept.com

Art Department



Ben Watts

www.art-dept.com

Art Department



Ben Watts

www.art-dept.com

Art Department



Ben Watts

www.art-dept.com

Art Department



Ben Watts

www.art-dept.com

Art Department



Ben Watts

www.art-dept.com

Art Department



Ben Watts

www.art-dept.com

Art Department



Ben Watts

www.art-dept.com

Art Department



Ben Watts

www.art-dept.com

Art Department



Ben Watts

www.art-dept.com

Art Department



Ben Watts

www.art-dept.com

Art Department



Ben Watts

www.art-dept.com

Art Department



Ben Watts

www.art-dept.com

Art Department



Ben Watts

www.art-dept.com

Art Department



Ben Watts

www.art-dept.com

Art Department



Ben Watts

www.art-dept.com

Art Department



Ben Watts

www.art-dept.com

Art Department



Ben Watts

www.art-dept.com

Art Department



Ben Watts

www.art-dept.com

Art Department



Ben Watts

www.art-dept.com

Art Department



Ben Watts

www.art-dept.com

Art Department



Ben Watts

www.art-dept.com

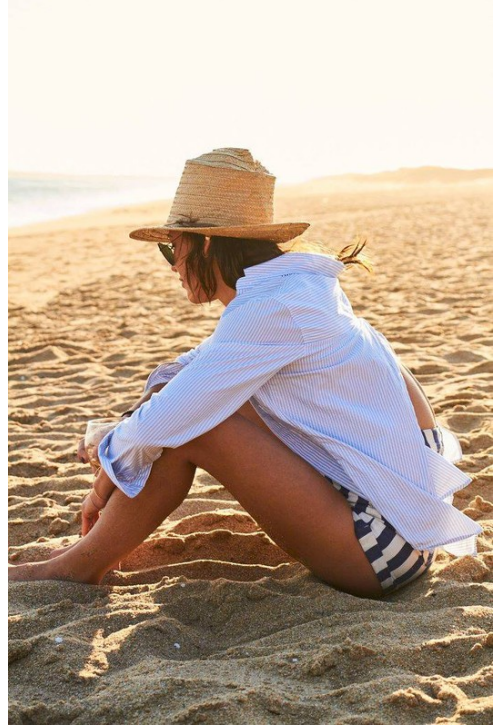
Art Department



Ben Watts

www.art-dept.com

Art Department



Ben Watts

www.art-dept.com

Art Department



Ben Watts

www.art-dept.com

Art Department



Ben Watts

www.art-dept.com

Art Department



Ben Watts

www.art-dept.com

Art Department



Ben Watts

www.art-dept.com

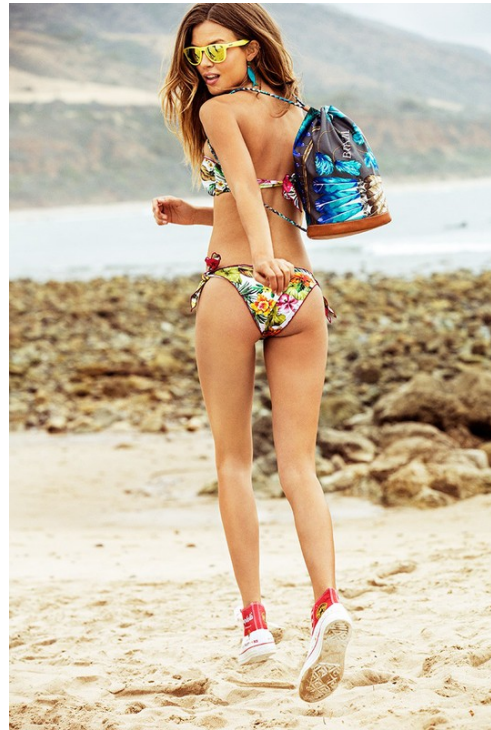
Art Department



Ben Watts

www.art-dept.com

Art Department



Ben Watts

www.art-dept.com

Art Department



Ben Watts

www.art-dept.com

Art Department



Ben Watts

www.art-dept.com

Art Department



Ben Watts

www.art-dept.com

Art Department



Ben Watts

www.art-dept.com

Art Department



Ben Watts

www.art-dept.com

Art Department



Ben Watts

www.art-dept.com

Art Department



Ben Watts

www.art-dept.com

Art Department



Ben Watts

www.art-dept.com

Art Department



Ben Watts

www.art-dept.com

Art Department



Ben Watts

www.art-dept.com

Art Department



Ben Watts

www.art-dept.com

Art Department



Ben Watts

www.art-dept.com

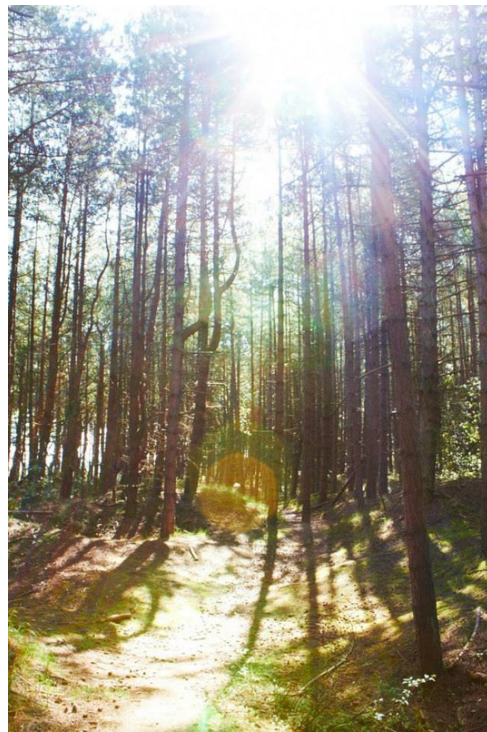
Art Department



Ben Watts

www.art-dept.com

Art Department



Ben Watts

www.art-dept.com

Art Department



Ben Watts

www.art-dept.com

Art Department



Ben Watts

www.art-dept.com

Art Department



Ben Watts

www.art-dept.com

Art Department



Ben Watts

www.art-dept.com

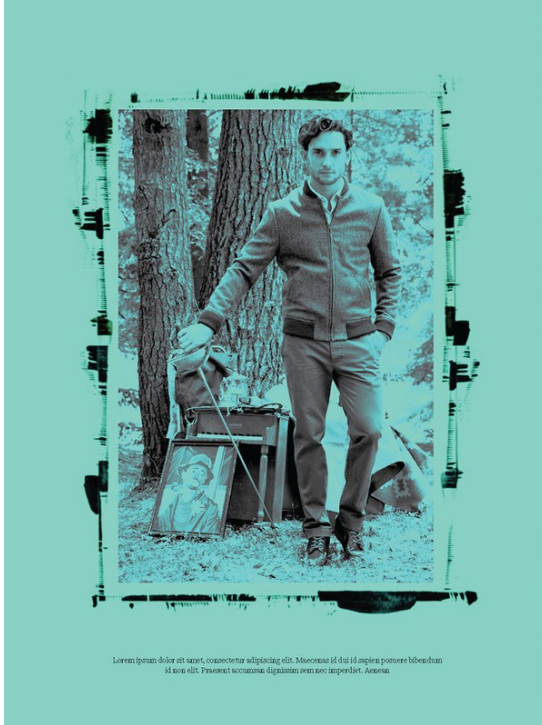
Art Department



Ben Watts

www.art-dept.com

Art Department



Ben Watts

www.art-dept.com

Art Department



Ben Watts

www.art-dept.com

Art Department



Ben Watts

www.art-dept.com

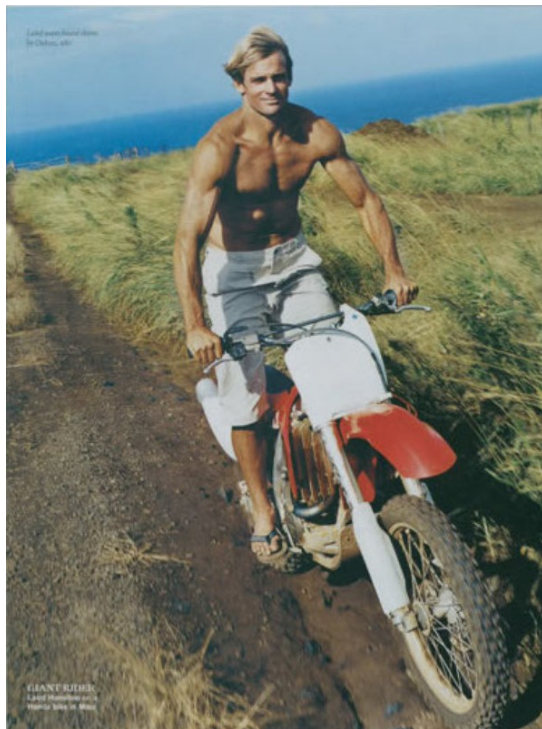
Art Department



Ben Watts

www.art-dept.com

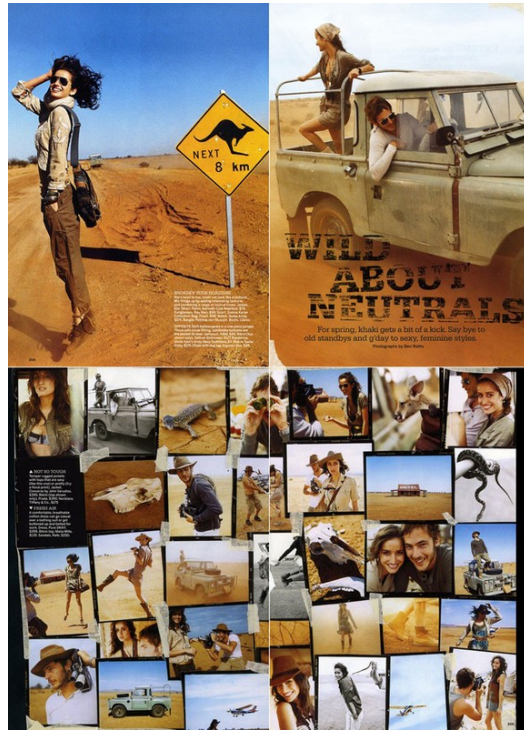
Art Department



Ben Watts

www.art-dept.com

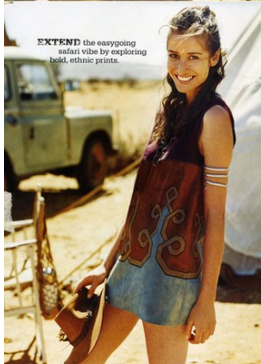
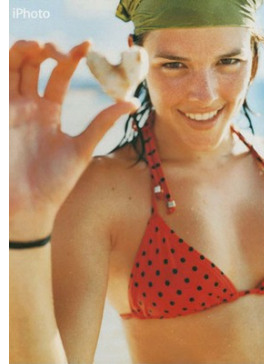
Art Department



Ben Watts

www.art-dept.com

Art Department



Ben Watts

www.art-dept.com

Art Department



Ben Watts

www.art-dept.com

Art Department



Ben Watts

www.art-dept.com

Art Department



PRESERVATION HALL WHERE JAZZ LIVES ON

Hidden down an unassuming street in the French Quarter, Preservation Hall is easy to miss. Until the music starts, that is. Because as soon as we heard the drums pick up and horns kick in, we knew we'd found something special. Dedicated to protecting, preserving, and perpetuating New Orleans' rich heritage as the birthplace of jazz, it functions as both social club and performance space for many of the city's most legendary musicians. And if you're lucky enough to catch an impromptu "Second Line," well, it doesn't get much better than that.



The Cupcake Roll \$10
 The American Dream \$10
 American Rocker \$10
 Red Dress Blue by Chroma \$40
 Blue by Chroma \$15
OPPOSITE PAGE:
 The Preservation Center \$10
 Daily Grand \$10
 Green \$10
 The Preservation Center \$10
 The Madman Pocket Square \$40
 All Dress Blue by Chroma \$40

Ben Watts

www.art-dept.com

Art Department



Ben Watts

www.art-dept.com

Art Department



Ben Watts

www.art-dept.com

Art Department



Ben Watts

www.art-dept.com

Art Department



Ben Watts

www.art-dept.com

Art Department



SPLIT NECK DRESS \$85.00, Polyester, 40271-120V,
 All Imported.
 KNEE-HIGH CABLE-KNIT BOOTS \$115, Merino Wool/nylon/Suede, 4154C-120V,
 All Imported.
 PANTON WOODS BOOTE \$115, Merino Wool/nylon/Suede, 4154C-120V,
 All Imported.
 CHUNNY STRIPED HANDBAG \$35.00, Acrylic/Wool, 40802-120V,
 All Imported.

TRUCKER HAT \$15.00, Polyester/Cotton, 40271-120V,
 All Imported.
 CAMEL TOWN TURTLE \$25.00, Cotton, 40254-120V,
 All Imported.
 \$95.00, Cotton/Silk/Linen, 40254-120V,
 All Imported.
 CANADA TURTLE \$25.00, Acrylic/Wool, 40802-120V,
 All Imported.
 MORDIC MITTENS \$45.00, Wool/Cotton, 40404-120V,
 All Imported.

POLE & LAUNCHER \$120, Wool/Polyester/Nylon, 40270-120V,
 All Imported.
 PLAIN WOOL GAUZE SCARF \$45.00, Wool, 40209-120V,
 All Imported.
 CHUNNY HANDBAG \$35.00, Acrylic/Wool, 40802-120V,
 All Imported.



WOOL PEAK COAT \$180, Wool/Nylon, 38207E-120V,
 All Imported.
 \$180.00, Merino Wool/nylon/Cotton, 40254-120V,
 All Imported.

DOWN VEST \$95.00, Nylon/Polyester/Linene, 40411-120V,
 All Imported.
 DONKELI, HOODED PUFFERWEAR \$85.00,
 All Imported.
 LAMB WALK TURTLE \$25.00, Cotton, 40254-120V,
 All Imported.
 FLANNEL LINED COUCH \$19.00, Cotton, 40233-120V,
 All Imported.
 CANADA TURTLE \$25.00, Acrylic/Wool, 40802-120V,
 All Imported.
 CANADA TURTLE \$25.00, Acrylic/Wool, 40802-120V,
 All Imported.
 BOTTING DONKELI, VEST \$110, Merino/Wool, 41022-120V,
 All Imported.
 \$95.00, Cotton, 40254-120V,
 All Imported.
 \$95.00, Cotton, 40254-120V,
 All Imported.
 WOOL LENSINGSTONE TURTLE \$25.00,
 All Imported.
 WOOL LENSINGSTONE TURTLE \$25.00,
 All Imported.

Ben Watts

www.art-dept.com

Art Department



Ben Watts

www.art-dept.com

Art Department



Ben Watts

www.art-dept.com