

# Art Department

SPRING SUMMER 2013 — VOL. III, ISSUE 19 — FR €20 | USA \$40

## PURPLE FASHION

FEATURING **Miranda Kerr**<sup>134</sup>, **Slavoj Zizek**<sup>409</sup>, **Larry Clark**<sup>162</sup>,  
**Harmony Korine**<sup>192</sup>, **Phoebe Philo**<sup>172</sup>, **Richard Artschwager**<sup>198</sup>,  
**Mathias Augustyniak**<sup>457</sup>, and a book by **Ryan McGinley**...



Ben Watts

[www.art-dept.com](http://www.art-dept.com)

# Art Department



**Lemon double  
gabardine  
checkered dress  
and silk headband  
LOUIS VUITTON**

Ben Watts

[www.art-dept.com](http://www.art-dept.com)



# Art Department



**Rust and bordeaux  
satin sleeveless  
top and skirt worn  
with a Swarovski  
crystal Dédale  
choker and a Boule  
Arpège minaudière  
LANVIN with Fay  
ankle-strap sandals  
SANTONI**

Ben Watts

[www.art-dept.com](http://www.art-dept.com)

# Art Department



Azalea silk jacket with belt and flare pants, fuschia sunglasses, and patent leather boots GUCCI

Ben Watts



# Art Department



Ben Watts

[www.art-dept.com](http://www.art-dept.com)

# Art Department



**Pink cotton Secret Garden print top and yellow pants, and a Histoire Générale du Jazz clutch, all by OLYMPIA LE TAN with graphic leather heels FENDI**

Ben Watts

[www.art-dept.com](http://www.art-dept.com)



# Art Department

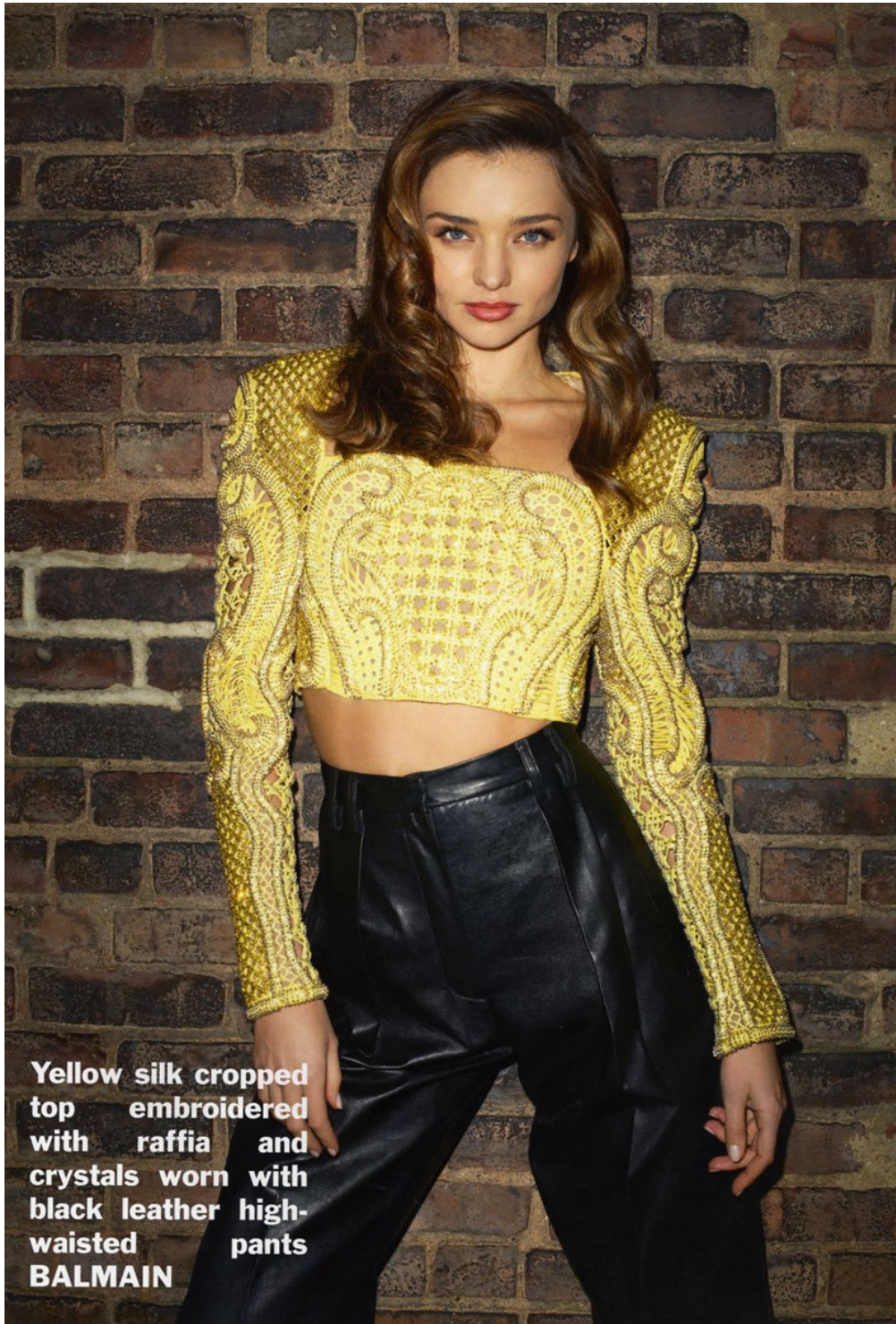


Ben Watts

[www.art-dept.com](http://www.art-dept.com)



# Art Department



Yellow silk cropped top embroidered with raffia and crystals worn with black leather high-waisted pants  
**BALMAIN**

Ben Watts

[www.art-dept.com](http://www.art-dept.com)



# Art Department

Sweden saharan  
dress, felt hat, and  
gold brass Opium  
necklace SAINT  
LAURENT by HEDI  
SLIMANE



Ben Watts

[www.art-dept.com](http://www.art-dept.com)

# Art Department

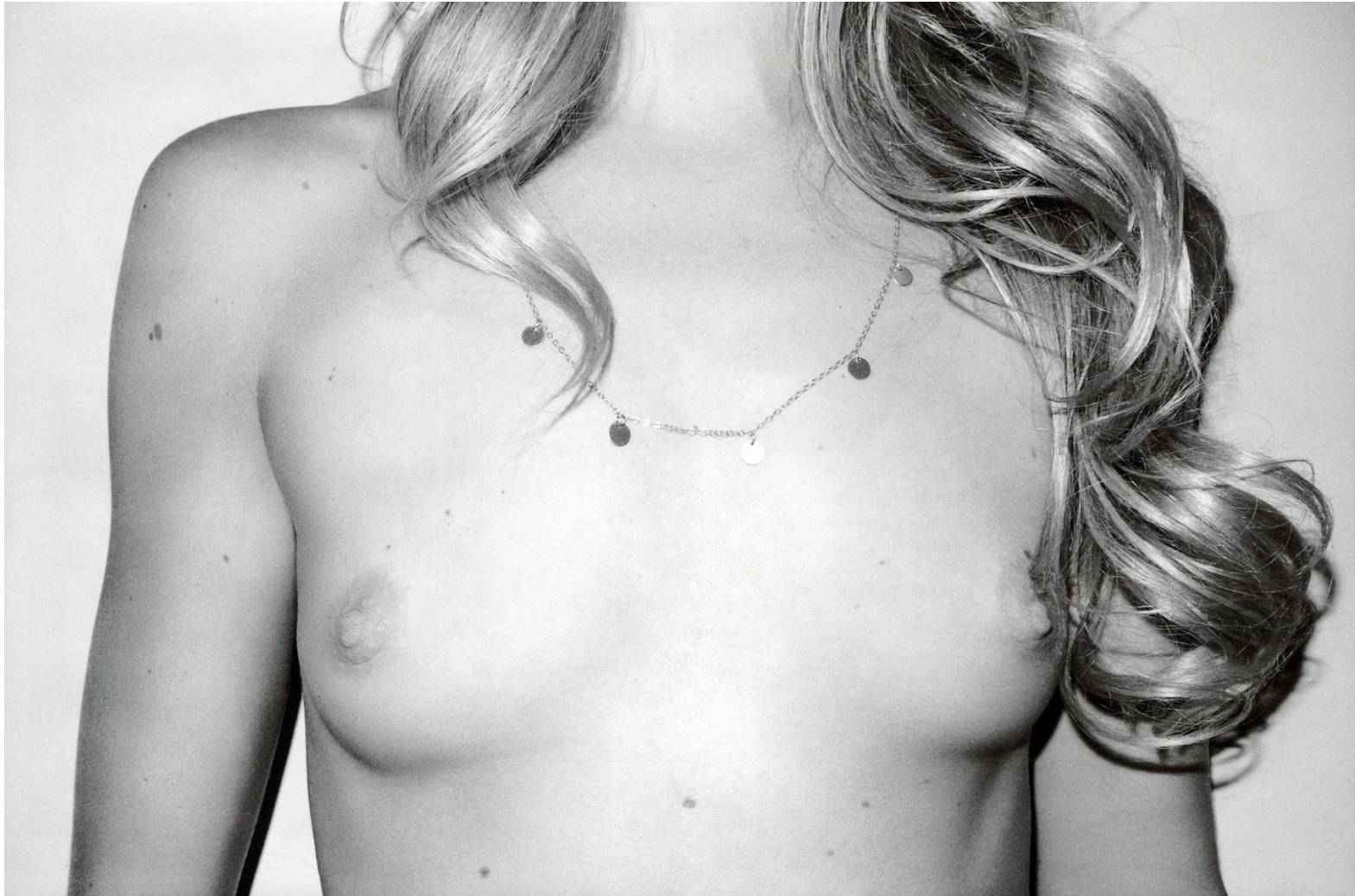


Ben Watts

[www.art-dept.com](http://www.art-dept.com)



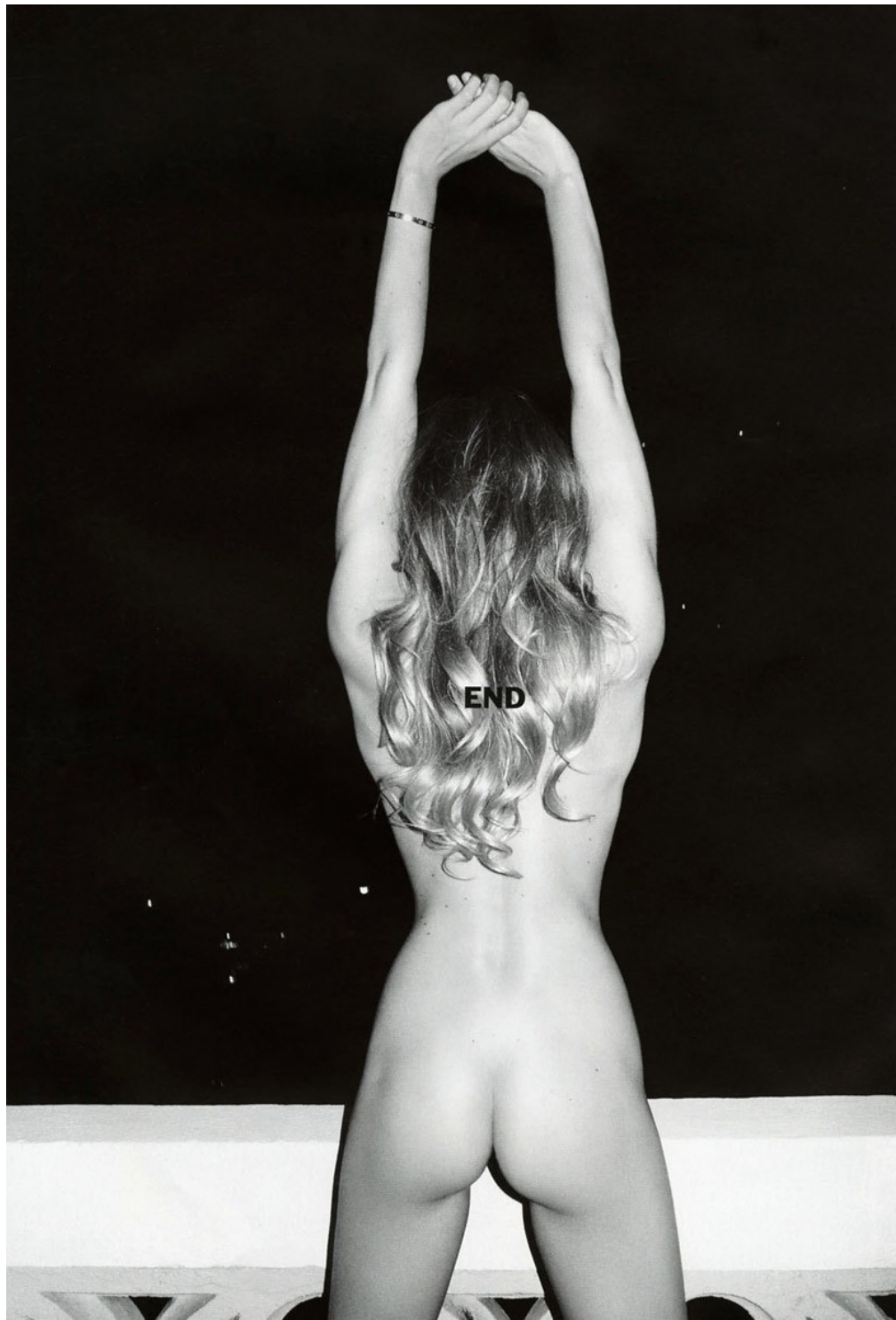
# Art Department



Ben Watts

[www.art-dept.com](http://www.art-dept.com)

# Art Department



Ben Watts

[www.art-dept.com](http://www.art-dept.com)



# Art Department



Ben Watts

[www.art-dept.com](http://www.art-dept.com)

# Art Department



Charlotte wears jacket and jeans Fam Irvoll. Briefs and bra model's own. Bangles Hermès. Socks New Lingwood. Shoes Nicholas Kirkwood.

Ben Watts

[www.art-dept.com](http://www.art-dept.com)



# Art Department

Stella wears jacket Burberry Prorsum. Bra Gap.  
Glasses Sophia Kokosalaki x Linda Farrow. Necklace  
Karen Walker. Watch Rolex Daytona. Ring Laura Lee.



Ben Watts

[www.art-dept.com](http://www.art-dept.com)

# Art Department



Ben Watts

[www.art-dept.com](http://www.art-dept.com)



# Art Department

Stella wears trousers, shirt, tie and shoes Miu Miu. Glasses Sophia Kokosalaki x Linda Farrow. Tie pin New & Lingwood. Watch Ikepod by Marc Newson. Ring Laura Lee.



"The best thing about being young is being able to dream, dress up, and express ourselves no matter of race or gender." STELLA MAXWELL. 22

I-D THE JUST KIDS ISSUE 161

## Ben Watts

[www.art-dept.com](http://www.art-dept.com)

# Art Department



Ben Watts

[www.art-dept.com](http://www.art-dept.com)



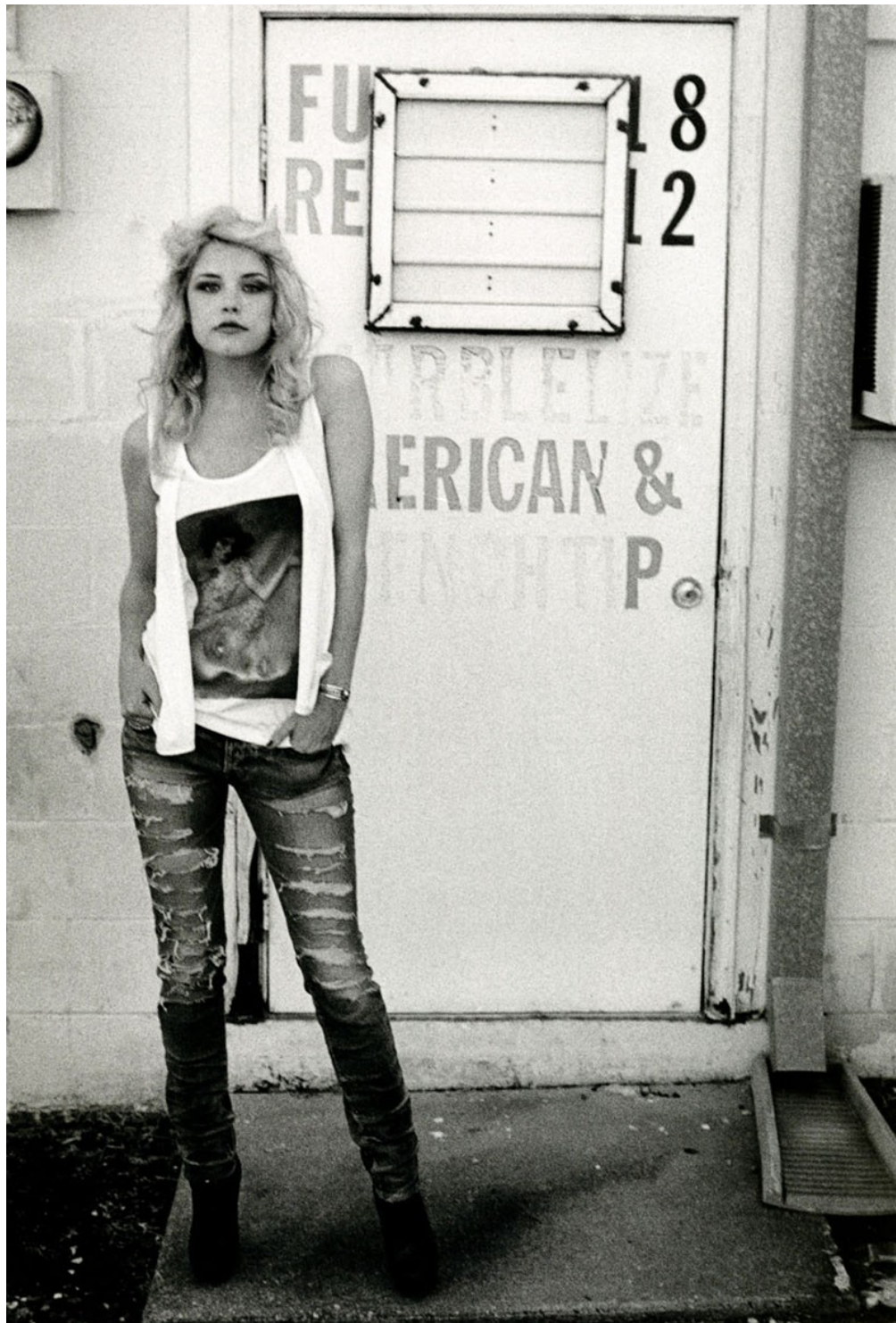
# Art Department



Ben Watts

[www.art-dept.com](http://www.art-dept.com)

# Art Department



Ben Watts

[www.art-dept.com](http://www.art-dept.com)



# Art Department



Ben Watts

[www.art-dept.com](http://www.art-dept.com)

# Art Department



Ben Watts

[www.art-dept.com](http://www.art-dept.com)



# Art Department



Ben Watts

[www.art-dept.com](http://www.art-dept.com)

# Art Department



Ben Watts

[www.art-dept.com](http://www.art-dept.com)



# Art Department



Ben Watts

[www.art-dept.com](http://www.art-dept.com)

# Art Department



A higher calling. Boots with altitude. THIS PAGE: Boots, \$1,155, Tod's. 800-457-TODS. OPPOSITE PAGE: Boots, \$1,450, Reed Krakoff. 877-733-3525. BEAUTY BAZAAR Paul Mitchell Express Ion Curl TurnStyle makes tousled locks easy to achieve (\$137.50).

## Ben Watts

[www.art-dept.com](http://www.art-dept.com)



# Art Department



Ben Watts

[www.art-dept.com](http://www.art-dept.com)

# Art Department



Ben Watts

[www.art-dept.com](http://www.art-dept.com)



# Art Department



Ben Watts

[www.art-dept.com](http://www.art-dept.com)

# Art Department



Ben Watts

[www.art-dept.com](http://www.art-dept.com)



# Art Department



Ben Watts

[www.art-dept.com](http://www.art-dept.com)



# Art Department



Ben Watts

[www.art-dept.com](http://www.art-dept.com)



# Art Department



We have a winner: Ladylike silhouettes and high slits raise the stakes. THIS PAGE: Dress with belt, Carolina Herrera, 212-249-6552. Bag, Hermès. OPPOSITE PAGE: Dress, \$3,950, Belstaff, belstaff.com. Earrings, De Beers. Bracelet (top), \$8,190, Gucci. Bracelet (bottom), \$1,150, Hermès. Clutch, \$995, Perrin Paris 1893. Shoes, \$595, Manolo Blahnik. See Where to Buy for shopping details. Model: Barbara Palvin; hair: Dennis Lanni for Nexxus Salon Hair Care; makeup: Frank B.; manicure: Alicia Torello; production: Atlas Productions; casting: Tali Magal at Freebird (freebirdprod.com); set design: Andy Harman. Shot on location at Meadowlands Racetrack, East Rutherford, NJ (meadowlandsracetrack.com).

## Ben Watts

[www.art-dept.com](http://www.art-dept.com)

# Art Department



Ben Watts

[www.art-dept.com](http://www.art-dept.com)



# Art Department



## *A PESO DE OURO*

*Lily Donaldson (IMG NY) veste top de python com aplicações de ouro, R\$ 30.000, calça de seda, R\$ 7.273, e cinto, R\$ 2.120, tudo Gucci. Na página ao lado, vestido de couro dourado, R\$ 3.488, Patricia Viera. Na dupla anterior, vestido de tule bordado com pacotês de metal, R\$ 2.000, Lança Perfume. Óculos, R\$ 730, Versace para Luxottica; cinto, R\$ 2.120, Gucci; braceletes, R\$ 600, Ellus; carteira, R\$ 7.350, Louis Vuitton.*

*Edição de moda: PEDRO SALES*

## Ben Watts

[www.art-dept.com](http://www.art-dept.com)

# Art Department



Ben Watts

[www.art-dept.com](http://www.art-dept.com)



# Art Department



Ben Watts

[www.art-dept.com](http://www.art-dept.com)

# Art Department



Ben Watts

[www.art-dept.com](http://www.art-dept.com)



# Art Department



Ben Watts

[www.art-dept.com](http://www.art-dept.com)

# Art Department



Ben Watts

[www.art-dept.com](http://www.art-dept.com)



# Art Department



Ben Watts

[www.art-dept.com](http://www.art-dept.com)

# Art Department



Ben Watts

[www.art-dept.com](http://www.art-dept.com)



# Art Department



Ben Watts

[www.art-dept.com](http://www.art-dept.com)

# Art Department



Ben Watts

[www.art-dept.com](http://www.art-dept.com)



# Art Department



Ben Watts

[www.art-dept.com](http://www.art-dept.com)

# Art Department



Ben Watts

[www.art-dept.com](http://www.art-dept.com)



# Art Department



Ben Watts

[www.art-dept.com](http://www.art-dept.com)

# Art Department



Ben Watts

[www.art-dept.com](http://www.art-dept.com)



# Art Department



Ben Watts

[www.art-dept.com](http://www.art-dept.com)

# Art Department



Ben Watts

[www.art-dept.com](http://www.art-dept.com)



# Art Department



Ben Watts

[www.art-dept.com](http://www.art-dept.com)

# Art Department



Ben Watts

[www.art-dept.com](http://www.art-dept.com)



# Art Department



Ben Watts

[www.art-dept.com](http://www.art-dept.com)

# Art Department



Ben Watts

[www.art-dept.com](http://www.art-dept.com)



# Art Department

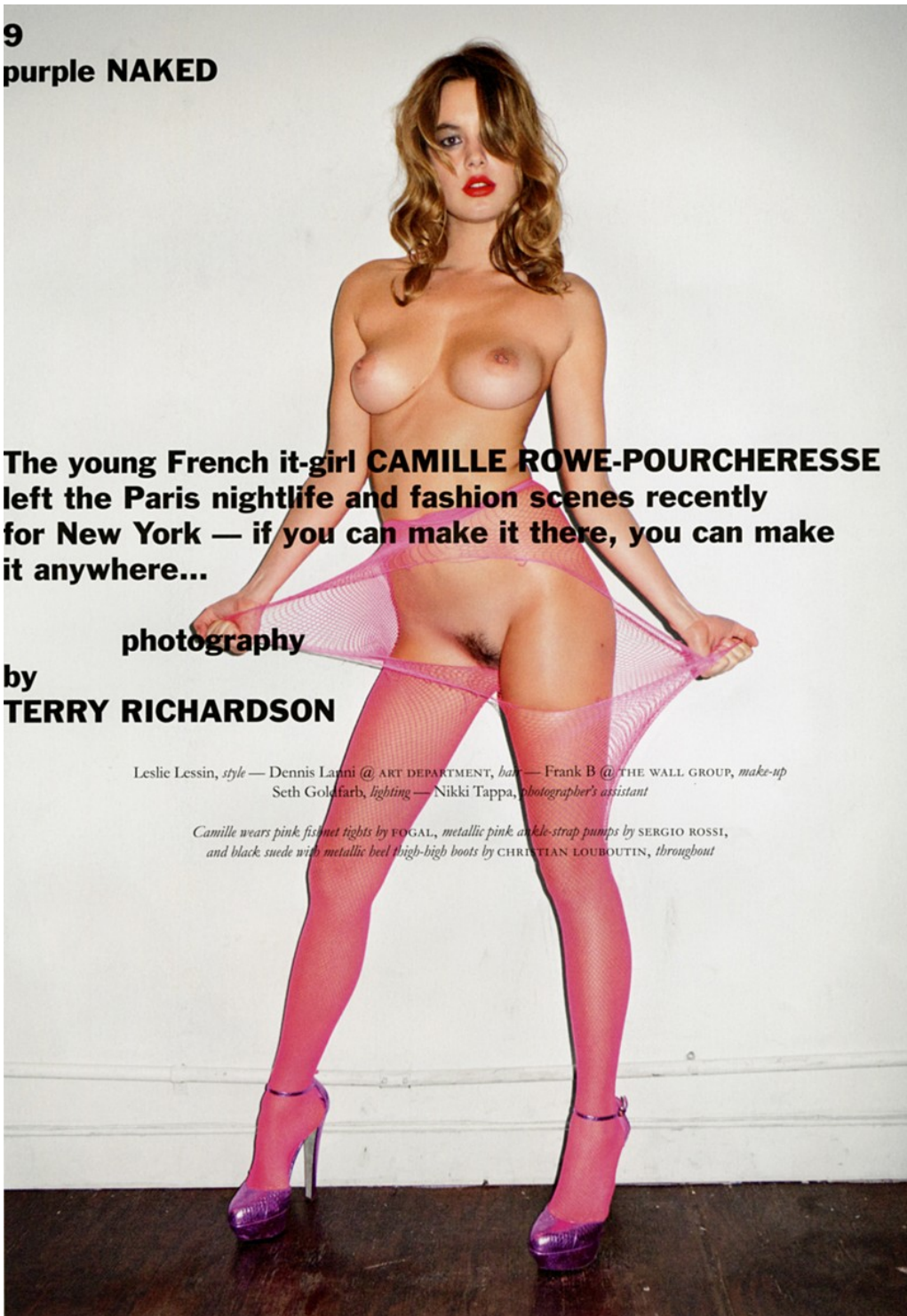
**9**  
**purple NAKED**

The young French it-girl **CAMILLE ROWE-POURCHERESSE** left the Paris nightlife and fashion scenes recently for New York — if you can make it there, you can make it anywhere...

photography  
by  
**TERRY RICHARDSON**

*Leslie Lessin, style — Dennis Lanni @ ART DEPARTMENT, hair — Frank B @ THE WALL GROUP, make-up  
Seth Goldfarb, lighting — Nikki Tappa, photographer's assistant*

*Camille wears pink fishnet tights by FOGAL, metallic pink ankle-strap pumps by SERGIO ROSSI,  
and black suede with metallic heel thigh-high boots by CHRISTIAN LOUBOUTIN, throughout*



Ben Watts

[www.art-dept.com](http://www.art-dept.com)

# Art Department



Ben Watts

[www.art-dept.com](http://www.art-dept.com)



# Art Department



*White dress by* PETER PILOTTO  
*and white gold & malis bracelets*  
DOMINIC JONES

## Ben Watts

[www.art-dept.com](http://www.art-dept.com)



# Art Department



Ben Watts

[www.art-dept.com](http://www.art-dept.com)



# Art Department



Ben Watts

[www.art-dept.com](http://www.art-dept.com)

# Art Department



Ben Watts

[www.art-dept.com](http://www.art-dept.com)



# Art Department



Ben Watts

[www.art-dept.com](http://www.art-dept.com)

# Art Department



Ben Watts

[www.art-dept.com](http://www.art-dept.com)



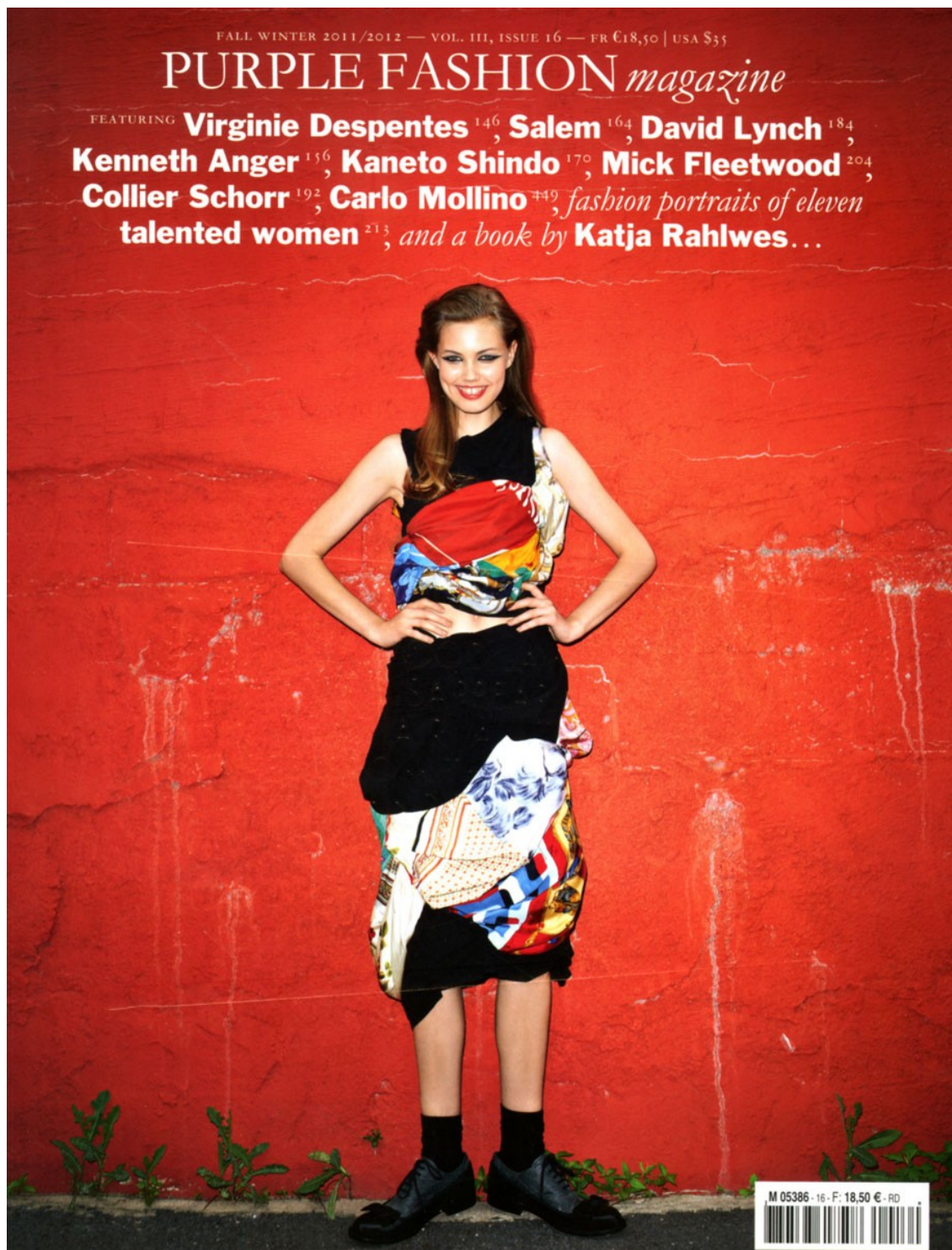
# Art Department



Ben Watts

[www.art-dept.com](http://www.art-dept.com)

# Art Department



Ben Watts

[www.art-dept.com](http://www.art-dept.com)



# Art Department

White silk poncho  
with tuxedo  
detail, scuba knit  
turtleneck bib, and  
wool flight shorts  
**ALEXANDER  
WANG**



Ben Watts

[www.art-dept.com](http://www.art-dept.com)

# Art Department



Ben Watts

[www.art-dept.com](http://www.art-dept.com)



# Art Department

Two-tone tweed  
cape and jacket  
embroidered with  
sequins, wool  
crepe pants,  
leather gloves,  
and calf suede  
boots CHANEL



Ben Watts

[www.art-dept.com](http://www.art-dept.com)



# Art Department



Ben Watts

[www.art-dept.com](http://www.art-dept.com)



# Art Department



Ben Watts

[www.art-dept.com](http://www.art-dept.com)

# Art Department



Ben Watts

[www.art-dept.com](http://www.art-dept.com)



# Art Department



#### Page de gauche /

Gilet à franges en velours noir,  
GIORGIO ARMANI COLLECTION  
Pantalon,  
VIKTOR & ROLF  
Chapeau en velours,  
ELLEN CHRISTINE MILLINERY  
Écharpe en soie imprimée,  
G-STAR  
Manchette en onyx avec détails en or,  
FENTON  
Escarpins compensés,  
CHRISTIAN LOUBOUTIN

#### Cr contre /

Étole en fourrure noire,  
GIORGIO ARMANI COLLECTION  
Combinaison pantalon à motifs, pied-de-poule,  
DIANE VON FURSTENBERG  
Chapeau en velours noir,  
PATRICIA UNDERWOOD  
Au poignet,  
ceinture en cuir noir avec boucle en or,  
FENTON

#### Photographe

Cecilia Krue  
@ Art Mix

#### Illustration

Marcell Roda  
@ Wergroup

#### Coiffure

Dennis Linnel  
@ Art Department

#### Maquillage

Krista Gallego  
@ Community NYC

#### Modèle /s

Aria Lopez  
@ Supreme

#### Castings

Stephan Stone

#### Assistants photographe

Christopher Aris,  
Eva Hildeman,  
David Iron

#### Assistants réalisation

Jakob Wianec,  
Ignaci Ojeda,  
Ariane Zaaria

#### Remerciements

Michelle Pryor  
@ Supreme Management

## Ben Watts

[www.art-dept.com](http://www.art-dept.com)

# Art Department



Ben Watts

[www.art-dept.com](http://www.art-dept.com)



# Art Department



Ben Watts

[www.art-dept.com](http://www.art-dept.com)

# Art Department



Ben Watts

[www.art-dept.com](http://www.art-dept.com)



# Art Department



Ben Watts

[www.art-dept.com](http://www.art-dept.com)

# Art Department



Ben Watts

[www.art-dept.com](http://www.art-dept.com)



# Art Department



WWW.OPENINGCEREMONY.US

Ben Watts

[www.art-dept.com](http://www.art-dept.com)

# Art Department



Ben Watts

[www.art-dept.com](http://www.art-dept.com)



# Art Department

## MINNIE MORTIMER DESIGNER

### UPPER EAST SIDE

**DEREK BLASBERG** You're perfect for that '70s silhouette.

**MINNIE MORTIMER** I am crazy for the silhouette! Today it is not always considered the most flattering, but it really shows off a woman's shape. Jeans are all about the backside—Calvins from the '70s do the job well.

**DB** I know that you have your own fashion line. What era do you look to most for that?

**MM** For my line I am constantly referencing the '60s—Slim Aarons photographs, Hitchcock films, and the flower children.

**DB** Is there anything about the '70s era that you particularly like?

**MM** Of course! The party vibe, the gilt, the sparkle, the wild and debauched. I missed the '70s entirely—I was born in the '80s—but I would have loved to do it up.

**DB** Which of that era's icons would you most likely identify with?

**MM** Diane von Furstenberg. She gave women the freedom to feel sexy and professional with that wrap dress. I am crazy about all things DVF.

**DB** You grew up in New York. Did people who were older than you ever talk about New York "in the good old days"?

**MM** My parents spent some time at Studio 54 and I have questioned them to death about it, poring over the old pictures for clues. It must have been wild, because they won't tell me anything!

**DB** I know that you live in California now. Do you like that part of the world?

**MM** Malibu has this free and natural vibe that is the perfect contrast to New York. I love having both sides of that coin. I love L.A. and I love to surf, but New York is where I grew up and where my family and heart are.

**DB** What's your favorite thing about New York City?

**MM** The pace. The rate at which ideas are turned over, work is accomplished—the efficiency of it all. That creates a powerful energy.

Top Michael Kors  
Bra Calvin Klein Underwear  
Jeans vintage Calvin Klein Jeans Belt  
Salvatore Ferragamo Necklace Bulgari  
Large cuff Patricia von Musulin  
Small cuff David Yurman  
Rings H&M



## Ben Watts

[www.art-dept.com](http://www.art-dept.com)

# Art Department

## DR. LISA AIRAN DERMATOLOGIST

### GRAMERCY PARK

**DEREK BLASBERG** Let's talk about that hair! Did you like it big and curly like this?

**LISA AIRAN** The hair is amazing. It reminds me of Guy Bourdin photos from the '70s.

**DB** Have you ever worn so much denim and sparkles?

**LA** I am not usually a denim and sparkles girl, but I think Chloé did a great job with these.

**DB** This is obviously a reference to New York in the 1970s. Is there anything about that era that you like?

**LA** It seemed like a fun, experimental time. People wore their hair big, with bright, colorful makeup, and there was some great fashion: YSL, Halston, Giorgio di Sant'Angelo, Karl Lagerfeld doing Chloé, Zandra Rhodes, Jean-Charles de Castelbajac.

**DB** Which '70s icon would you most likely identify with?

**LA** I love the way Bianca Jagger wore Victorian white then. Jerry Hall looked so great with her long, flowing hair and Mugler dresses. The people I identify with are Jane Birkin, Charlotte Rampling, Loulou de la Falaise. These women had their own identifiable styles, which seemed effortless. Marisa Berenson was, and still is, super chic. I love her in the new movie *I Am Love*, which epitomizes high style.

**DB** You're from Chicago. Did you always know that you wanted to move to New York City?

**LA** New York is the greatest place to live. There are so many interesting people. Eventually all of your friends come through NYC.

Jeans and shirt Chloé  
Belt Givenchy by Riccardo Tisci  
Necklace Piaget  
Earrings Topshop  
Ring Patricia von Musulin

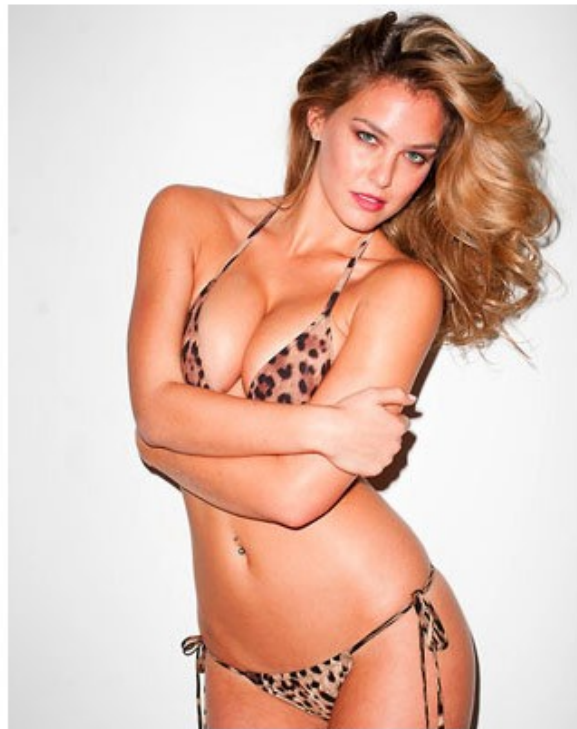


## Ben Watts

[www.art-dept.com](http://www.art-dept.com)



# Art Department



Ben Watts

[www.art-dept.com](http://www.art-dept.com)

# Art Department



“WHETHER IT’S  
BEING A RAPPER OR  
AN ACTOR, I’D CHOOSE  
THAT OVER BEING  
IN A SUIT-AND-TIE  
ANT FARM. I’VE BEEN  
IN THAT WORLD. I’VE  
INTERNEED BEFORE.”  
—*Vinny* GUADAGNINO

*THIS PAGE: ON VINNY: SUIT: TOM FORD.  
UNDERWEAR: EMPORIO ARMANI. FEDORA:  
BAILEY OF HOLLYWOOD. NECKLACE:  
KONSTANTINO. SHOES: GIORGIO ARMANI.  
ON BAE: SWIMSUIT: DOLCE & GABBANA.  
SHOES: CHRISTIAN LOUBOUTIN. OPPOSITE:  
ON BONNIE: PANTS: DOLCE & GABBANA. HAT:  
BAILEY OF HOLLYWOOD. SUNGLASSES:  
EMPORIO ARMANI. WATCH: OMEGA. SHOES:  
D&G. ON BAE: SWIMSUIT: OMO NORMA  
KAMALI. SHOES: GIUSEPPE ZANOTTI.*

## Ben Watts

[www.art-dept.com](http://www.art-dept.com)



# Art Department



Ben Watts

[www.art-dept.com](http://www.art-dept.com)

# Art Department



Ben Watts

[www.art-dept.com](http://www.art-dept.com)



# Art Department



Ben Watts

[www.art-dept.com](http://www.art-dept.com)

# Art Department



Ben Watts

[www.art-dept.com](http://www.art-dept.com)



# Art Department



Ben Watts

[www.art-dept.com](http://www.art-dept.com)

# Art Department



Ben Watts

[www.art-dept.com](http://www.art-dept.com)



# Art Department



Ben Watts

[www.art-dept.com](http://www.art-dept.com)

# Art Department



Ben Watts

[www.art-dept.com](http://www.art-dept.com)



# Art Department



Ben Watts

[www.art-dept.com](http://www.art-dept.com)

# Art Department



Ben Watts

[www.art-dept.com](http://www.art-dept.com)



# Art Department



Ben Watts

[www.art-dept.com](http://www.art-dept.com)

# Art Department



Ben Watts

[www.art-dept.com](http://www.art-dept.com)



# Art Department



Ben Watts

[www.art-dept.com](http://www.art-dept.com)

# Art Department



Ben Watts

[www.art-dept.com](http://www.art-dept.com)



# Art Department



Ben Watts

[www.art-dept.com](http://www.art-dept.com)

# Art Department



Ben Watts

[www.art-dept.com](http://www.art-dept.com)



# Art Department

mode

MATTHEW  
WILLIAMSON

En réalité,  
je pense  
que  
la couleur  
est bien  
plus facile  
à porter  
que le  
mono  
chrome.

Après avoir fait le tube vestimentaire de l'été dernier chez H&M, le prodige anglais, exilé à New York pendant la quasi-totalité des années 00, est revenu à Londres pour présenter ses collections. Un coup de soleil fatal à la grisaille valant coup de projecteur sur le coloriste acrobatique Matthew Williamson par l'image et la parole.

Robe verte  
avec manches en soie  
de couleur crème  
et paillettes,  
MATTHEW WILLIAMSON  
Bracelets fluorescents,  
PAMELA LOVE

Ben Watts

[www.art-dept.com](http://www.art-dept.com)



# Art Department



Ben Watts

[www.art-dept.com](http://www.art-dept.com)



# Art Department



CAMICIA IN SETA STAMPATA CON FIOCCO E  
CULOTTES A VITA ALTA, ALEXANDER MCQUEEN;  
CINTURA SCREAMING MIMI'S; BRACCIALI  
ERMANNO SCERVINO, PAGINA ACCANTO,  
REGGISENO IN TULLE, LA PERLA PRÉ-T-À-PORTER;  
TURBANTE VINTAGE SCREAMING MIMI'S; MAXI  
COLLANA VINTAGE; BRACCIALI IN LEGNO, SONIA  
RYKIEL; BRACCIALI DI PLEXIGLAS, BORBONESE.  
IL MAKE UP, OMBRETTO MONO COULEUR TOTALLY  
BLACK PER UN VERO EFFETTO SMOKY EYES E  
ZIGOMI SCOLPITI CON IL BLUSH DOUCEUR  
COMPACT CORAIL. LABBRA AL NATURALE CON  
ROUGE APPEAL GOYAVE, TUTTO CLARINS.

## Ben Watts

[www.art-dept.com](http://www.art-dept.com)

# Art Department



Ben Watts

[www.art-dept.com](http://www.art-dept.com)



# Art Department



Ben Watts

[www.art-dept.com](http://www.art-dept.com)

# Art Department



Ben Watts

[www.art-dept.com](http://www.art-dept.com)



# Art Department



Ben Watts

[www.art-dept.com](http://www.art-dept.com)

# Art Department



Ben Watts

[www.art-dept.com](http://www.art-dept.com)



# Art Department



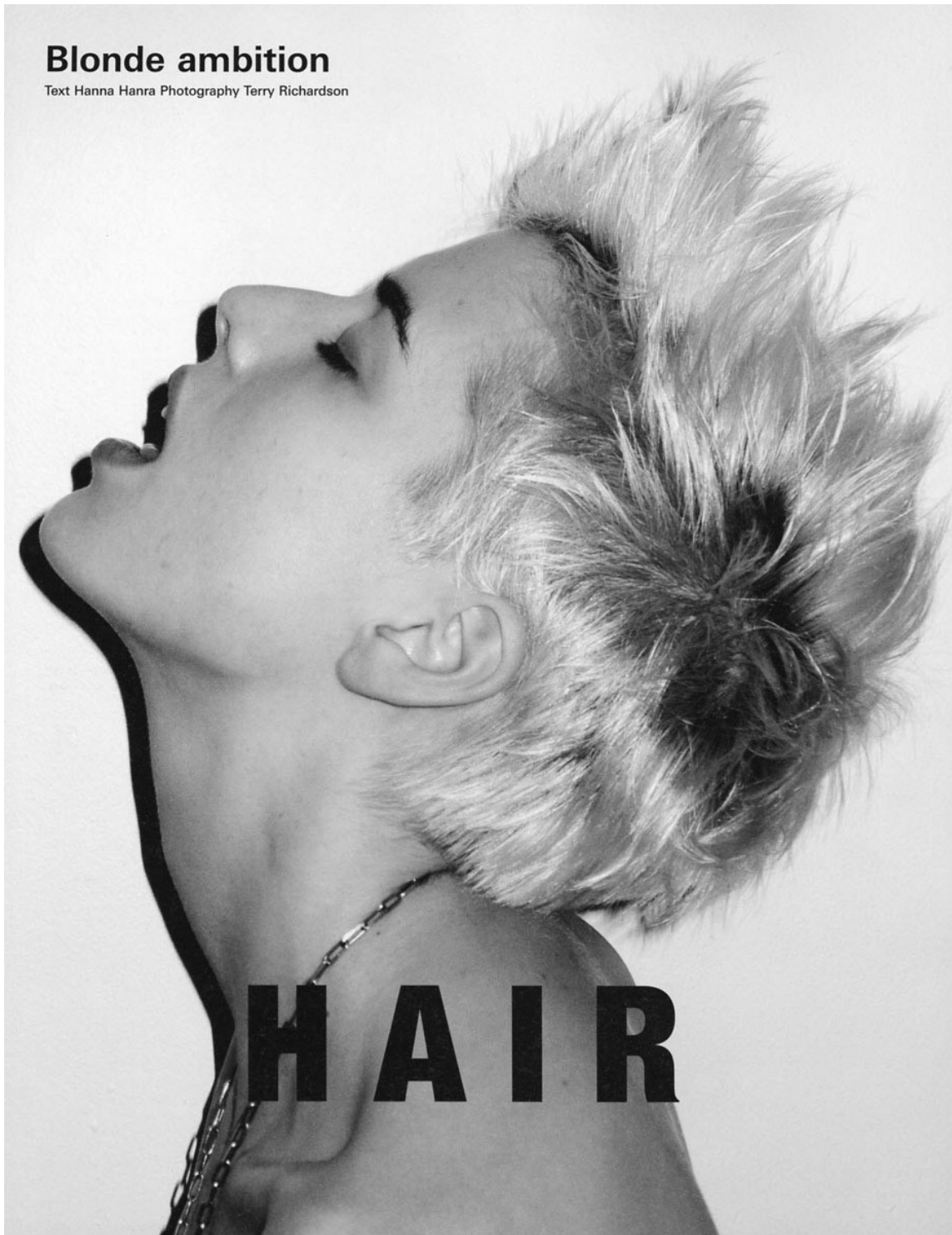
Ben Watts

[www.art-dept.com](http://www.art-dept.com)

# Art Department

## Blonde ambition

Text Hanna Hanra Photography Terry Richardson



Ben Watts

[www.art-dept.com](http://www.art-dept.com)



# Art Department



86 I-D THE AGYNESS DEYN MAY 2008

Ben Watts

[www.art-dept.com](http://www.art-dept.com)

# Art Department



Ben Watts

[www.art-dept.com](http://www.art-dept.com)



# Art Department



GOLFINO DI MAGLIA INCROCIATO  
SU GONNA DI SETA LACCATA CON  
PANNELLI DRAPPEGIATI. ALEX  
SANDRO DELL'ACQUA. TOP DI PIZ-  
ZO VINTAGE, SOUTHPAW. PETTINA-  
TURE DENNIS LANNI FOR BUMBLE  
AND BUMBLE. MAQUILLAGE POLY  
OSMOND; MANICURE ROSEANN SIN-  
GLETON, ENTRAMBE © ART DEPART-  
MENT. SET DESIGN BY CHAD OZIZ-  
WID © WWW.MAGNETY.COM. FA-  
SHION EDITOR VICTORIA BARTLETT

## Ben Watts

[www.art-dept.com](http://www.art-dept.com)

# Art Department



Ben Watts

[www.art-dept.com](http://www.art-dept.com)



# Art Department



Ben Watts

[www.art-dept.com](http://www.art-dept.com)

# Art Department



Ben Watts

[www.art-dept.com](http://www.art-dept.com)



# Art Department



**PHOTOGRAPHY ELLEN VON UNWERTH**  
*studio editor Christopher Nugent,  
hair Denis Lanni for Bumble and Bumble,  
make-up Deva Kinnery at Art Department,  
model Kianine © Elite, production Art + Commerce*

*Vintage dress by YVES SAINT LAURENT;  
velvet hat by ANOUSHKA*

in between **days**

Ben Watts

[www.art-dept.com](http://www.art-dept.com)

# Art Department



Ben Watts

[www.art-dept.com](http://www.art-dept.com)



# Art Department



Ben Watts

[www.art-dept.com](http://www.art-dept.com)

# Art Department



Ben Watts

[www.art-dept.com](http://www.art-dept.com)



# Art Department



Ben Watts

[www.art-dept.com](http://www.art-dept.com)

# Art Department



Body suit and shawl by Junya  
Watanabe; bag by Chloe

PHOTOGRAPHY BY YELENA YEMCHUK  
STYLING BY SORAYA DAYANI

Hair by Denis Larin for Bumble & Bumble NYC  
Make-up by Virginia Young at Streeters  
Photographic assistance by Chris  
Model: JP at IMG

**“The inspiration was  
1920s and 1930s  
feminine liberation:  
assured femininity and  
assumed masculinity”**

DRIES VAN NOTEN

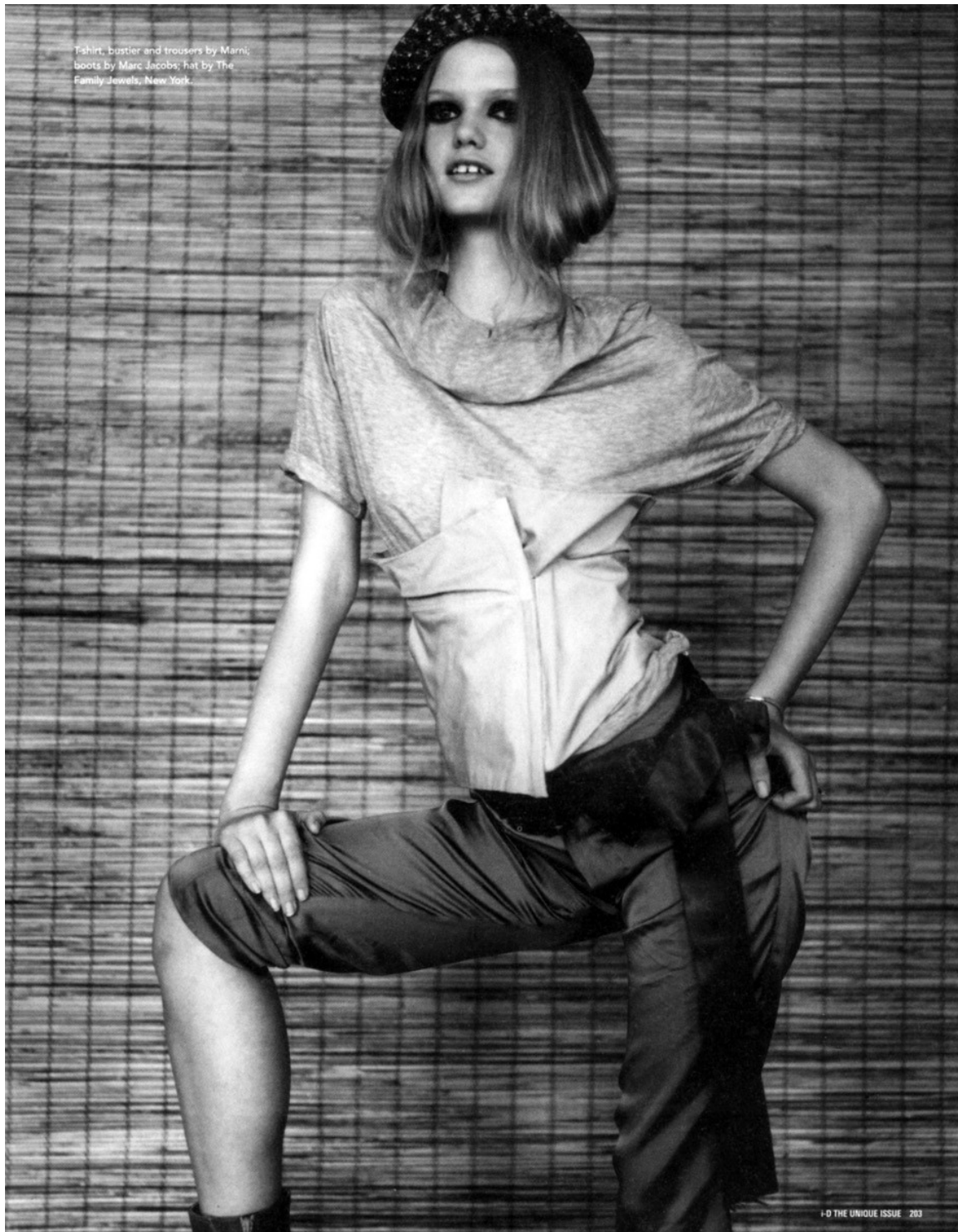
F D THE UNIQUE ISSUE 185

## Ben Watts

[www.art-dept.com](http://www.art-dept.com)



# Art Department



Ben Watts

[www.art-dept.com](http://www.art-dept.com)

# Art Department

**PHOTOGRAPHY TILDA VINCHON**  
Julia after breakfast in June  
Julia after lunch in the Department, with up  
Dora Kowal of the Department, with Kowal  
in 1911, photograph of Julia in the  
Department, Julia in the Department

By **KEARNEY** with  
**KAREN WALKER**



guinevere

Ben Watts

[www.art-dept.com](http://www.art-dept.com)



# Art Department



Ben Watts

[www.art-dept.com](http://www.art-dept.com)

# Art Department



ポップなプリント・ガール。  
色とプリントの涼水に目がくらみそ  
うなこの夏は、プリント・オン・プ  
リントで思いっきりポップに楽しめ  
たい。ルイ・ヴィトンのコーチキ  
イトはそれのお手本。ちょっとレトロ  
な精がキュート。水着 ボレロ と  
もに参考商品 / LOUIS VUITTON  
(ルイ・ヴィトン ジャパン) 右手  
にした2個のブレスレット / とも  
に SEAMAN SCHEPPS 左手にし  
たブレスレット (下) / TERRY  
RODGERS & MELODY (上) /  
SEAMAN SCHEPPS ゴールド  
ネックレス / SHARON ALOUF

pvc Xippon

## Ben Watts

[www.art-dept.com](http://www.art-dept.com)



# Art Department



あどけない誘い。  
スカーフを身に纏ったようなグッチのトップ。ラグジュアリーなムードを漂わせるマリニルックを、木製のトグルがついたダッフル風セーターに合わせて、ちょっとカジュアルダウン。ボトムはミニのデニムスカートで元気よくまとめ、トップ ¥61,950 / GUCCI (グッチ ジャパン) セーター ¥31,500 / UNITED BAMBOO (ユニテッドバンブー) デニムのミニスカート 参考商品 / WRANGLER (リー・ジャパン) イヤリング / FARAONE MENNELLA

## My Denim Sweetheart

悩ましげなピンナップ・ガール。

スキニータイプのデニムが主流のシーズン。ひとくちにスキニーといっても、スタイリングでエレガントにもカジュアルにも変幻自在に遊べるのがデニムの魅力。テリー・リチャードソンによって、ノーマルな顔立ちのココがデニムスタイルのピンナップガールに大変化。

Photos: Terry Richardson  
Fashion Editor: Mel Ottenberg

*Vogue Japan* 210

Ben Watts

[www.art-dept.com](http://www.art-dept.com)

# Art Department



## 大人のエレガンス。

オーストラリアのデザインユニット・ツピのスキニーデニム。ほどよいフィット感と独特のスタイル力。そしてちょっとした遊び心でモデルたちにも人気。トップには、エレガントなシャツを合わせ、洗練された大人の着こなしを。シャツ ¥16,800 / PAUL SMITH BLACK (ポール・スミス ジャパン) ジーンズ 参考商品 / TSUBI (フットーントーキー) イヤリング ¥367,500 / BVLGARI (ブルガリ ジャパン) プレスレット、ネックレス/ともにスタイリスト私物

211 Vogue Nippon

## Ben Watts

[www.art-dept.com](http://www.art-dept.com)



# Art Department



Ben Watts

[www.art-dept.com](http://www.art-dept.com)

# Art Department



Ben Watts

[www.art-dept.com](http://www.art-dept.com)



# Art Department



Ben Watts

[www.art-dept.com](http://www.art-dept.com)

# Art Department



## *The Private Case*

Terry Richardson & Richard Prince

Seth Goldfarb, Keichi and Alex, *photographer's assistants*  
Nicolas Klam, *stylist* — Chelsea Gombes and Meghan Folsom, *stylist assistants*  
Dennis Lanni, *hair* — Kemp Muhl (FORD), Sarabeth and Jessica Muhl, *models*

THEIR FIRST COLLABORATION TOGETHER, Richard Prince, exploder of subconscious American desire, and Terry Richardson, its archetypal photographer, co-signed an original fashion shoot for *Purple Fashion*, borrowing the title from a pornography collection housed in the British Library in London, which is inaccessible to the public.

*From left to right: Black cotton dress  
CHLOÉ. Sheer ivory panties AGENT  
PROVOCATEUR*

## Ben Watts

[www.art-dept.com](http://www.art-dept.com)



# Art Department



Ben Watts

[www.art-dept.com](http://www.art-dept.com)

# Art Department



Ben Watts

[www.art-dept.com](http://www.art-dept.com)



# Art Department



Ben Watts

[www.art-dept.com](http://www.art-dept.com)

# Art Department



Ben Watts

[www.art-dept.com](http://www.art-dept.com)



# Art Department



**balloon skirt**

Wool sweater (\$145) and wool skirt  
(\$335), both by Max Mara

## Ben Watts

[www.art-dept.com](http://www.art-dept.com)

# Art Department



Ben Watts

[www.art-dept.com](http://www.art-dept.com)



# Art Department



Ben Watts

[www.art-dept.com](http://www.art-dept.com)

# Art Department



ROBE EN TULLE VIOLET REBRODÉ DE SEQUINS ANNA SUI;  
PULL LILAS EN LUREX RAYÉ ANOUSCHKA;  
COLLANT NOIR FDGAL; SANDALES  
DORÉES A.P.C. À GAUCHE; TOP  
REBRODÉ DE PAILLETES À MANCHES  
EN MOUSSELINE BLUMARINE.  
■ ASSISTANTE-STYLISTE: FELICIA.  
MANNEQUINS: LUCCA@I.M.G.  
ET TELL@BANANAS. COIFFURE: DENNIS  
LANNI@ART DEPARTMENT.  
MAQUILLAGE: MARIEL BARRERA  
FOR JOE. REMERCIEMENTS À  
ANITA LEE BITTON@THE ESTABLISHMENT  
ET NICOLE@SUN STUDIOS N.Y.

## Ben Watts

[www.art-dept.com](http://www.art-dept.com)



# Art Department



Ben Watts

[www.art-dept.com](http://www.art-dept.com)

# Art Department



Ben Watts

[www.art-dept.com](http://www.art-dept.com)



# Art Department



Ben Watts

[www.art-dept.com](http://www.art-dept.com)

# Art Department



Ben Watts

[www.art-dept.com](http://www.art-dept.com)



# Art Department



Ben Watts

[www.art-dept.com](http://www.art-dept.com)

# Art Department



Ben Watts

[www.art-dept.com](http://www.art-dept.com)



# Art Department



## コンサバがセクシー。

タイトなブルーオーバーに膝丈のペンシルスカートで、今シーズンのセクシーを体現。半袖のブルーオーバー ¥102,900。チェックのペンシルスカート ¥71,400 / ともに CELINE (セリーヌ ジャパン)。エナメルのパンプス [JO] ¥88,200 / HERMES (エルメス ジャパン)。18K ホワイトゴールドドレスウォッチ ¥782,280 SIL. プレスレット ¥26,775 / ともに TIFFANY & CO. (ティファニー・アンド・カンパニー・ジャパン・イंक)。

© Ben Watts 118

## Ben Watts

[www.art-dept.com](http://www.art-dept.com)

# Art Department



Ben Watts

[www.art-dept.com](http://www.art-dept.com)



# Art Department



Ben Watts

[www.art-dept.com](http://www.art-dept.com)

# Art Department



Ben Watts

[www.art-dept.com](http://www.art-dept.com)



# Art Department



Ben Watts

[www.art-dept.com](http://www.art-dept.com)



# Art Department



Ben Watts

[www.art-dept.com](http://www.art-dept.com)



# Art Department



Ben Watts

[www.art-dept.com](http://www.art-dept.com)

# Art Department



>> *escocés*

Marc Jacobs para Louis  
Vuitton decide y los  
cuadros tartán se convierten  
en una gran tendencia

#### LA MONTAÑA COMO INSPIRACIÓN

Chaqueta corta de  
franela escocesa con  
cuello de tafeta (1.300 €);  
falda abullonada de  
tafeta escocesa con  
detalle de lazo de  
terciopelo (1.000 €), todo  
de Louis Vuitton. En la  
otra página, chaqueta  
de lana (1.085 €); chaleco  
blanco de nylon y piel  
de mongolia con capucha  
(1.940 €); vestido blanco  
sin mangas con falda-  
globo de nylon (1.560 €);  
botas de cuero con  
forro de piel y tacón  
cuña (1.085 €), todo  
de Nicolas Ghesquière  
para Balenciaga.

## Ben Watts

[www.art-dept.com](http://www.art-dept.com)



# Art Department



PICCOLA GIACCA IN COTONE  
A NIDO, DIAPEI SU SHORTS  
CON SPACCHETTI LATERALI E  
PAPILLON. VALENTINO ROMA.  
CAMICIA IN POPELINE.  
VALENTINO. CAPPELLO LOLA  
HATS. SANDALI IN PELLE CON  
NODO-DECORO, GIVENCHY.

Ben Watts

[www.art-dept.com](http://www.art-dept.com)

# Art Department



LUNGA GIACCA DI MARABU,  
ROSSELLA TARABINI  
PER ANNA MOLINARI: TUTA  
IN MUSSOLINA DE SETA  
CHIUSA DA ZIP, MAX MARA.  
CINTURA YSL RIVE GAUCHE.

Ben Watts

[www.art-dept.com](http://www.art-dept.com)



# Art Department



Ben Watts

[www.art-dept.com](http://www.art-dept.com)

# Art Department



Ben Watts

[www.art-dept.com](http://www.art-dept.com)



# Art Department



**BABY  
DOLL**

**Photography Terry Richardson  
Styling Leslie Lessin**

Makeup Devra Kinery (Frame)  
Hair Dennis Lanni (Bumble and bumble)  
Photo assistants Seth Goldfarb and Keichi Nitta  
Stylist assistant Lauri Eisenberg  
Model Susan Eldridge (Elite)

Shorts and suspenders Chloé ([www.chloe.com](http://www.chloe.com))  
Watch Van Cleef & Arpels  
Necklace Cartier ([www.cartier.com](http://www.cartier.com))  
Boots Frye for Anna Sui (212.941.8406)

## Ben Watts

[www.art-dept.com](http://www.art-dept.com)

# Art Department



Ben Watts

[www.art-dept.com](http://www.art-dept.com)



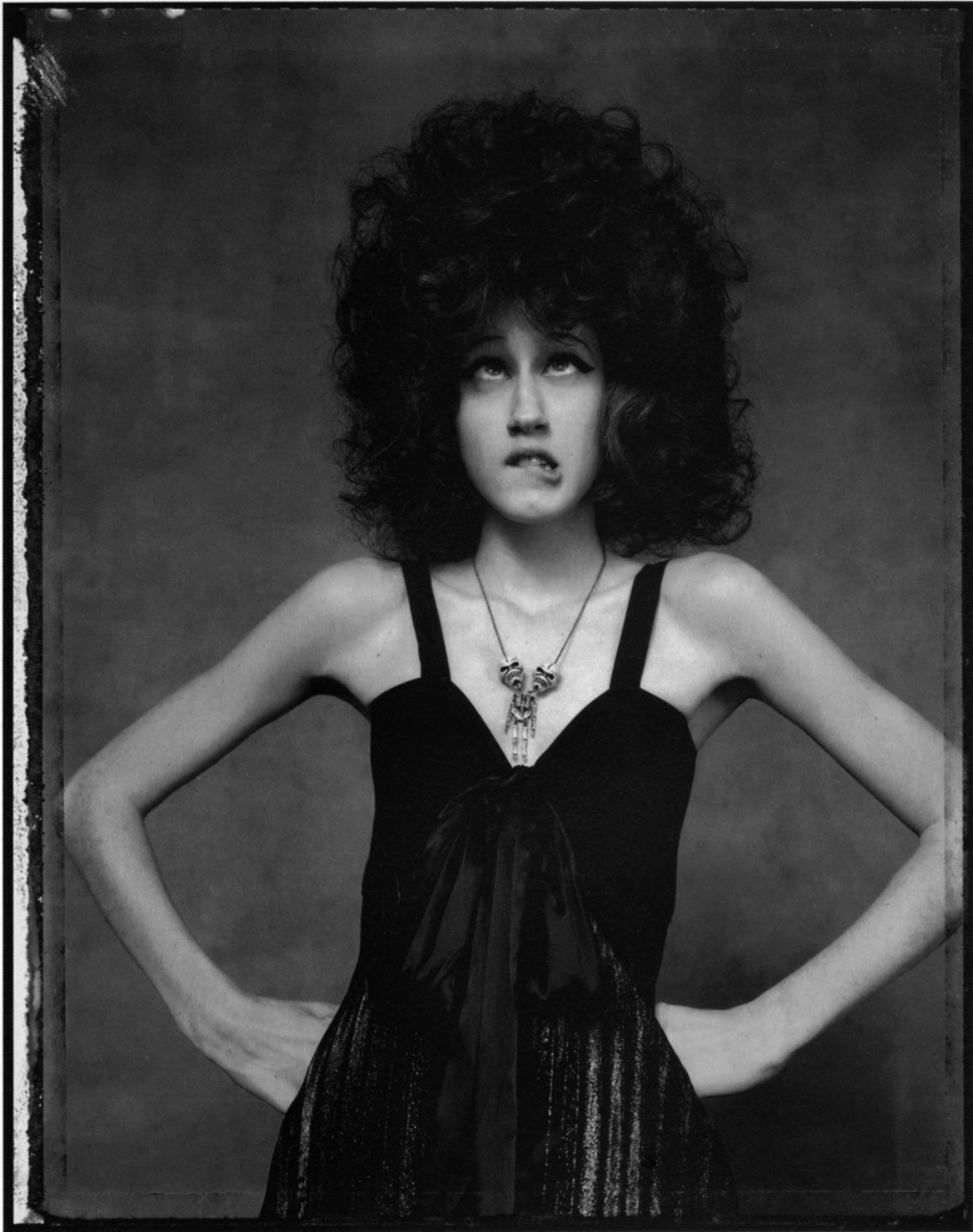
# Art Department



Ben Watts

[www.art-dept.com](http://www.art-dept.com)

# Art Department



Ben Watts

[www.art-dept.com](http://www.art-dept.com)



# Art Department



Ben Watts

[www.art-dept.com](http://www.art-dept.com)

# Art Department



Ben Watts

[www.art-dept.com](http://www.art-dept.com)