

Art Department



David Bellemere

www.art-dept.com

Art Department



David Bellemere

www.art-dept.com

Art Department



David Bellemere

www.art-dept.com

Art Department



David Bellemere

www.art-dept.com

Art Department



David Bellemere

www.art-dept.com

Art Department



David Bellemere

www.art-dept.com

Art Department



David Bellemere

www.art-dept.com

Art Department



David Bellemere

www.art-dept.com

Art Department



INOCENCIA
PERPETUA

Slip Dress y
pendientes *Coco
Crush*, todo de
Chanel; colgante
La Strada, collar
Happy Diamonds,
todo de Chopard.

¿por
siempre
joven?

La juventud y la
belleza se han
enlazado desde
tiempos hiperbóreos,
pero sin desvanecer
el ingrediente
principal de su
esencia: una sorpresa
inesperada

Fotógrafo David Bellemere
Realización Anna Katsanis

David Bellemere

www.art-dept.com

Art Department

REVELACIÓN ABSOLUTA

Sweater de La Perla; pendientes de Tiffany T. En página opuesta: vestido de Dior. En este reportaje: PEINADO, Gianluca Mandeli para Atelier Management; MAQUILLAJE, Joseph Carrillo para Kate Ryan; MANICURA, Geraldine Holford para IMC Worldwide; DIGITALIZACIÓN, Matthew Cylinder; PRODUCCIÓN, Marcos Fecchino; ASISTENTE DE MODA, Jaclyn Mastropasqua; AGENTE DE FOTOGRAFÍA, Carole; PRODUCTOR DE FOTOGRAFÍA, Amadine; ASISTENTES DE FOTOGRAFÍA, Zack Forsyth, Sebastian Beckman; ASISTENTE DE PRODUCCIÓN, Jeff Thomas; AGENTE DE TALENTO, Nico Mao; AGENTE DE PEINADO, Darrel; AGENTE DE MAQUILLAJE, Leigh Sikorski; AGENTE DE MANICURA, Luke Miley; MODELO, Valery Kaufman/The Society Management.



David Bellemere

www.art-dept.com

Art Department



David Bellemere

www.art-dept.com

Art Department



SIN MIEDO A LA EDAD

Vestido, ropa interior
y *choker*, todo de Dior;
anillos y pendientes,
todo de H. Stern.

En página opuesta:
sujetador de Tibi;
panties de Hanro;
brazaletes de Bulgari.

David Bellemere

www.art-dept.com

Art Department



David Bellemere

www.art-dept.com

Art Department



David Bellemere

www.art-dept.com

Art Department



David Bellemere

www.art-dept.com

Art Department



David Bellemere

www.art-dept.com

Art Department



David Bellemere

www.art-dept.com

Art Department



David Bellemere

www.art-dept.com

Art Department



David Bellemere

www.art-dept.com

Art Department



David Bellemere

www.art-dept.com

Art Department



David Bellemere

www.art-dept.com

Art Department



David Bellemere

www.art-dept.com

Art Department



David Bellemere

www.art-dept.com

Art Department



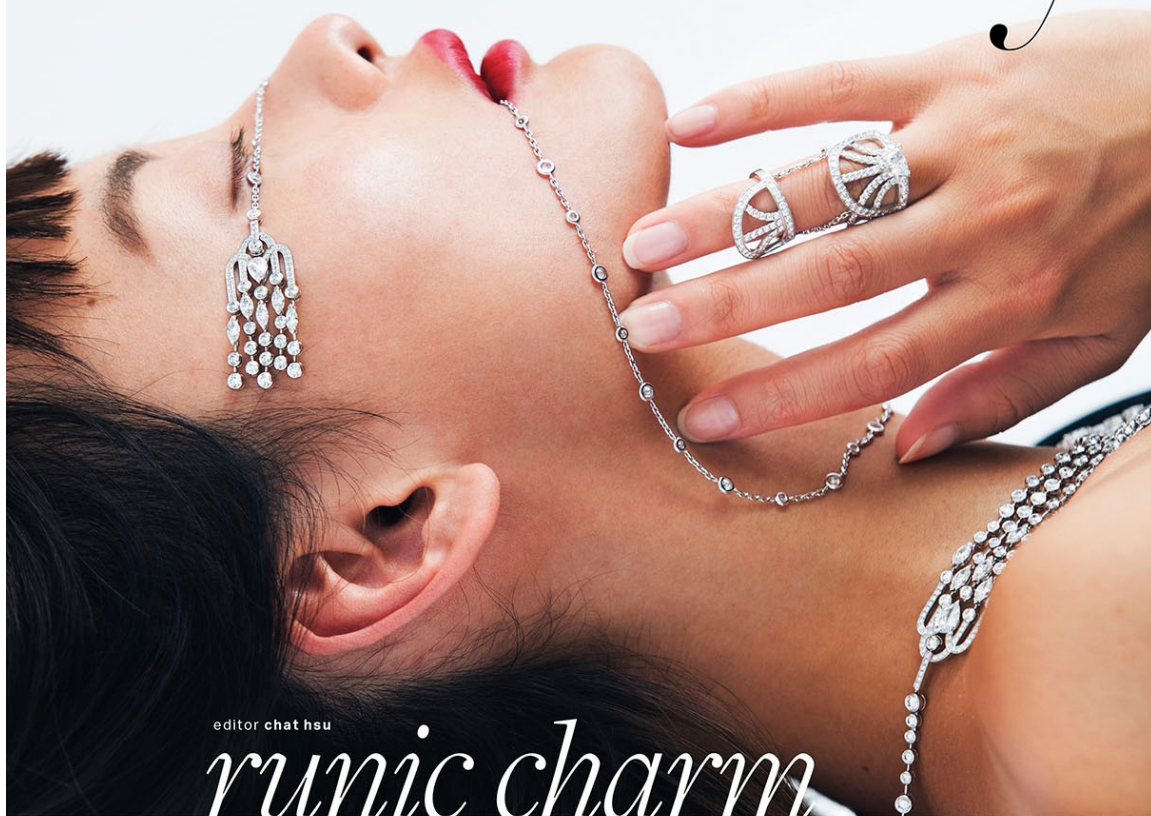
David Bellemere

www.art-dept.com

Art Department

Limelight Sunny Side
of Life 大型 Y 字長鍊 ·
18K 白金材質
鑲飾花式切割鑽石
及同系列 18K 白金飾
鑽雙節盾型指套
all by PIAGET

Vogue *Luxury*



editor chat hsu

runic charm

庇護甲冑

寶石，在最微小的晶體裡潛藏了最大的庇佑力量，是古時戰士征戰沙場的幸運護符，亦是今時女子時尚對戰的自信鎧甲。

photographed by David Bellemère @ Artesphere Paris; jewelry editor Chat Hsu; styled by Céline Bourreau; makeup Tatsu Yamanaka; hair Cyril Laloue; model Mao Xiaoxing @ Metropolitan Agency Paris; special thanks to Le Studio 19, Paris

David Bellemere

www.art-dept.com

Art Department



VOGUE LUXURY

Dior Dior Dior
Dentelle Tulle 藍寶石項鍊，
由 18K 白金所打造的
蕾絲網目向品牌的
高級訂製服傳統致敬，
懸綴單顆藍寶石
DIOR JOAILLERIE

110 VOGUE TAIWAN SEPTEMBER 2020

David Bellemere

www.art-dept.com

Art Department

VOGUE LUXURY



Gem Dior Rose
Fuschia 指環戒，
18K 白金材質戒台上，
鑲飾各式花式
切割紫粉紅色尖晶石
DIOR JOAILLERIE

David Bellemere

www.art-dept.com

Art Department



David Bellemere

www.art-dept.com

Art Department



David Bellemere

www.art-dept.com

Art Department



David Bellemere

www.art-dept.com

Art Department



David Bellemere

www.art-dept.com

Art Department



David Bellemere

www.art-dept.com

Art Department



David Bellemere

www.art-dept.com

Art Department



David Bellemere

www.art-dept.com

Art Department



David Bellemere

www.art-dept.com

Art Department



DIVERTISSEMENT

GIOCARE A SOVRAPPORRE I ROSSETTI CON MOISTURE-RICH LIPSTICK NELLE TONI HIBISCUS THRILLE ROSE DRAGÉE.

GUCCI COSMETICS

DETTAGLIO MODA: CARDIGAN **GUSS**

JEANS NELLA PAGINA ACCANTO. ESPLOSIONE GIOIOSA DI COLORE COME NELLA FESTA INDIANA HOLI, GRAZIE A PIGMENT POLIDRE ÉCLAT, **MAC COSMETICS**.

TRUCCO: ADAM FROOH; CAPELLI: SPANIELLEVALENTINA PER MANAGERMENT ARTISTS; NELLA PAGINA ACCANTO

David Bellemere

www.art-dept.com

Art Department



David Bellemere

www.art-dept.com

Art Department



David Bellemere

www.art-dept.com

Art Department



David Bellemere

www.art-dept.com

Art Department



David Bellemere

www.art-dept.com

Art Department



David Bellemere

www.art-dept.com

Art Department



David Bellemere

www.art-dept.com

Art Department



David Bellemere

www.art-dept.com

Art Department



David Bellemere

www.art-dept.com

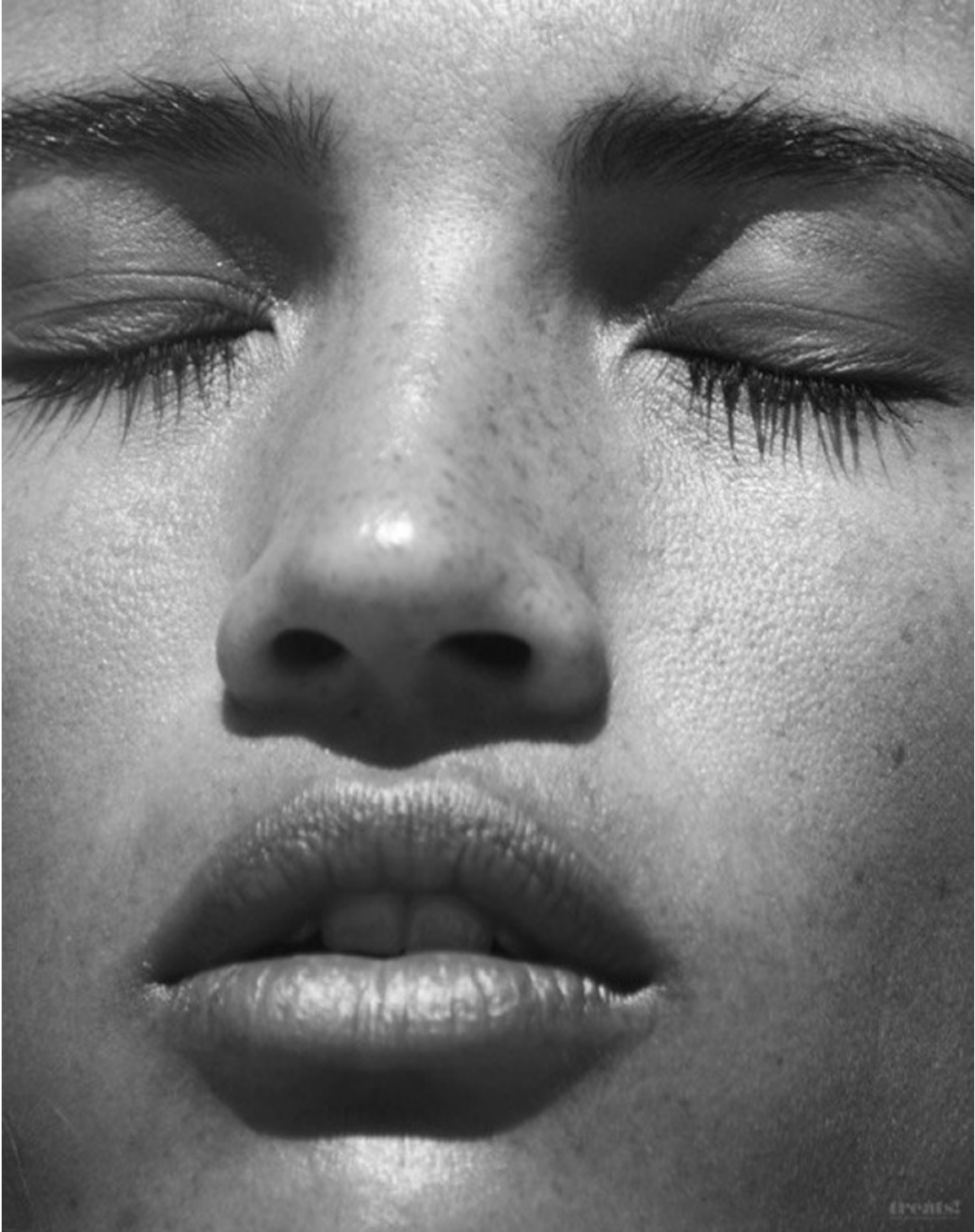
Art Department



David Bellemere

www.art-dept.com

Art Department



David Bellemere

www.art-dept.com

Art Department



David Bellemere

www.art-dept.com

Art Department



David Bellemere

www.art-dept.com

Art Department



David Bellemere

www.art-dept.com

Art Department



David Bellemere

www.art-dept.com

Art Department



David Bellemere

www.art-dept.com

Art Department



David Bellemere

www.art-dept.com

Art Department



David Bellemere

www.art-dept.com

Art Department



David Bellemere

www.art-dept.com

Art Department



David Bellemere

www.art-dept.com

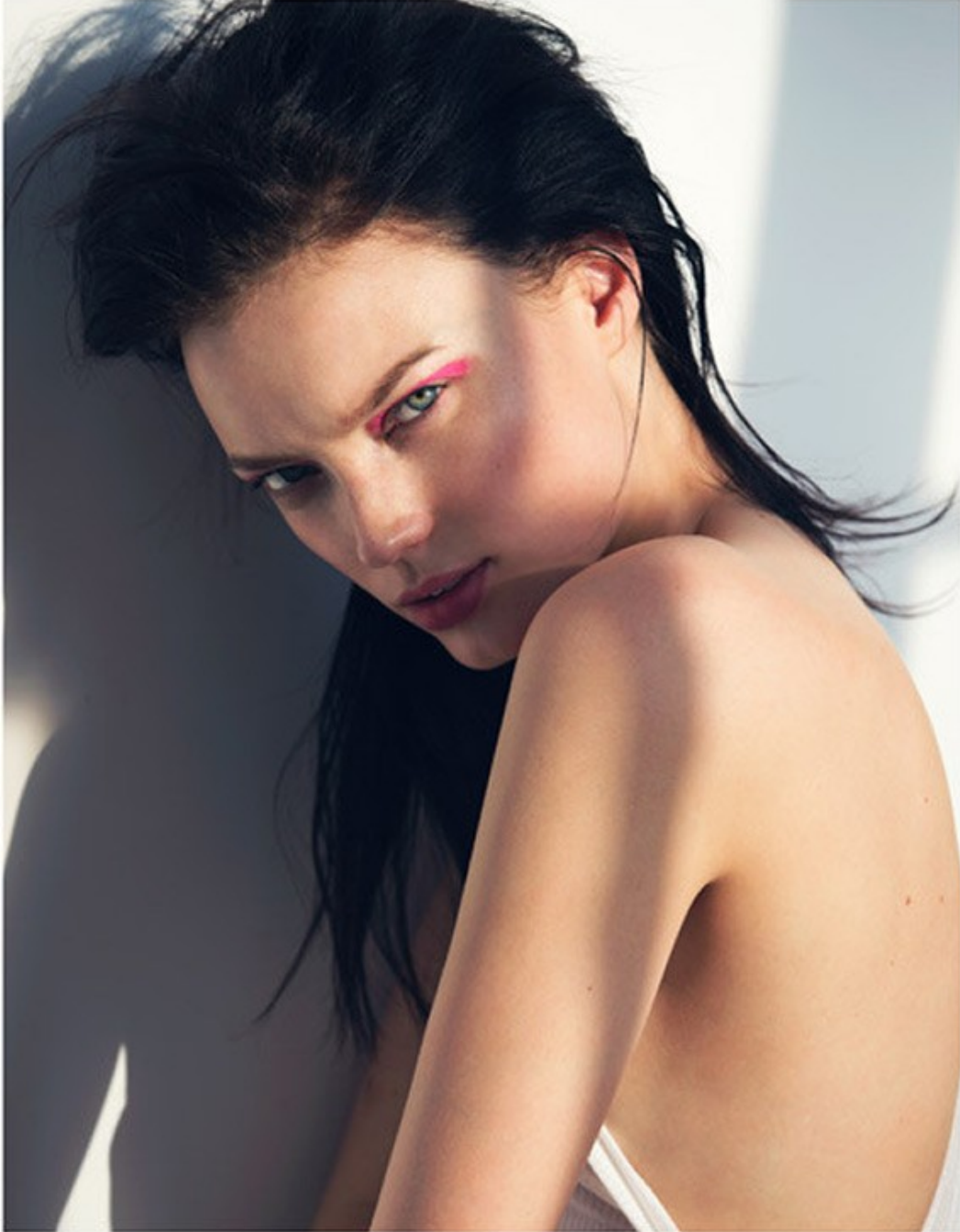
Art Department



David Bellemere

www.art-dept.com

Art Department



David Bellemere

www.art-dept.com

Art Department



David Bellemere

www.art-dept.com

Art Department



David Bellemere

www.art-dept.com

Art Department



David Bellemere

www.art-dept.com

Art Department



David Bellemere

www.art-dept.com

Art Department



David Bellemere

www.art-dept.com

Art Department



David Bellemere

www.art-dept.com

Art Department



David Bellemere

www.art-dept.com

Art Department



David Bellemere

www.art-dept.com

Art Department



David Bellemere

www.art-dept.com

Art Department



David Bellemere

www.art-dept.com

Art Department



body
Sleek shapes. Persuasive poses.
LANGUAGE
Candice knows how to shake up the everyday.

David Bellemere

www.art-dept.com

Art Department



David Bellemere

www.art-dept.com

Art Department



David Bellemere

www.art-dept.com

Art Department



David Bellemere

www.art-dept.com

Art Department



David Bellemere

www.art-dept.com

Art Department



David Bellemere

www.art-dept.com

Art Department



David Bellemere

www.art-dept.com

Art Department



David Bellemere

www.art-dept.com

Art Department



David Bellemere

www.art-dept.com

Art Department



David Bellemere

www.art-dept.com

Art Department



David Bellemere

www.art-dept.com

Art Department



David Bellemere

www.art-dept.com

Art Department



David Bellemere

www.art-dept.com

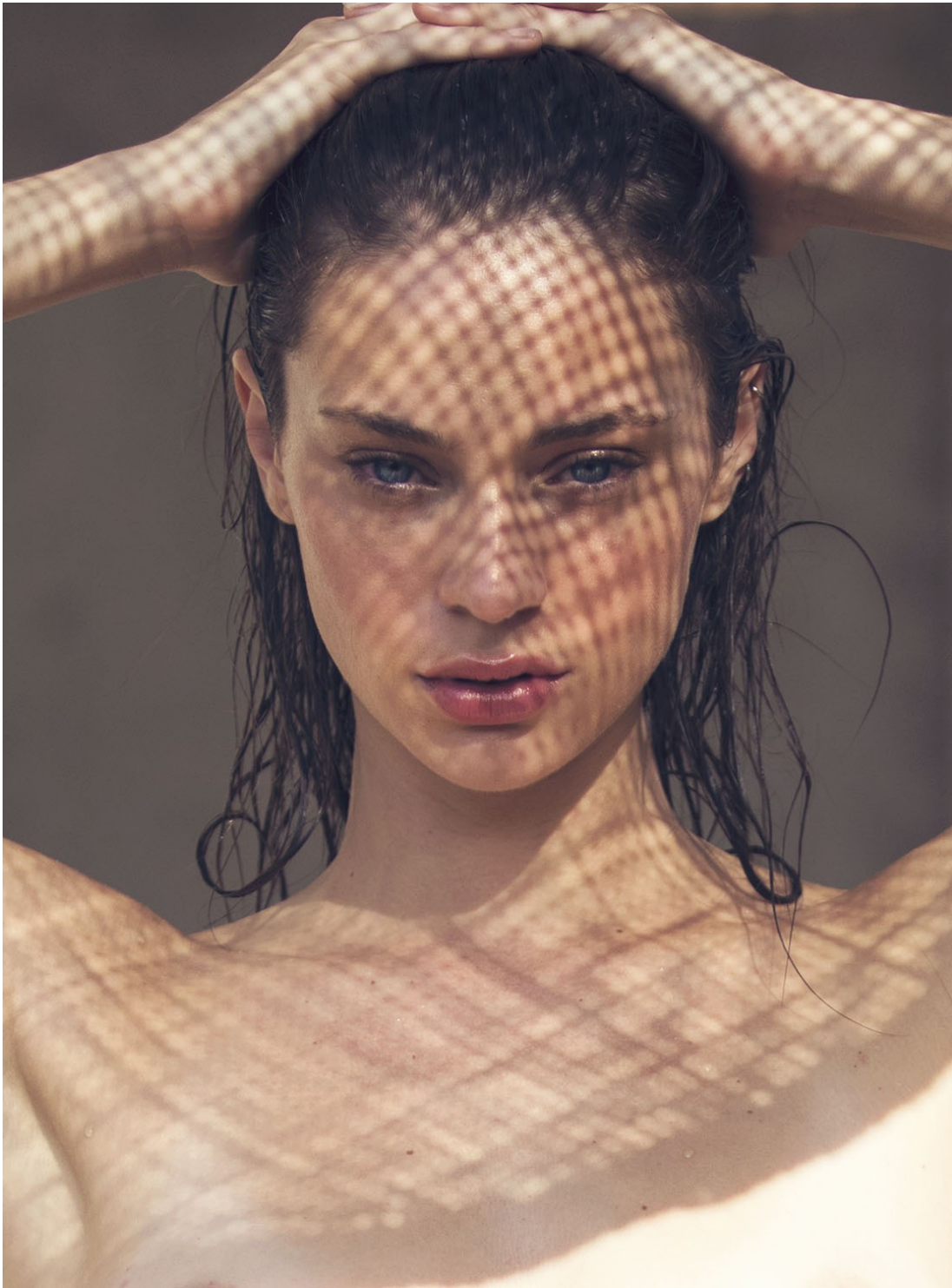
Art Department



David Bellemere

www.art-dept.com

Art Department



David Bellemere

www.art-dept.com

Art Department



David Bellemere

www.art-dept.com

Art Department



David Bellemere

www.art-dept.com

Art Department



David Bellemere

www.art-dept.com

Art Department



David Bellemere

www.art-dept.com

Art Department



David Bellemere

www.art-dept.com

Art Department



David Bellemere

www.art-dept.com

Art Department



David Bellemere

Art Department



David Bellemere

www.art-dept.com

Art Department



David Bellemere

www.art-dept.com

Art Department



David Bellemere

www.art-dept.com

Art Department



talent Georgia May Jagger @ TESS Management; fashion assistants Ahnna Lee, Anahide Shafiei and Parissa Shafiei;
make up Megumi Itano; hair Maxime Mace; photographer assistant Kader Bennacer; agent Carole Dardanne @ Artsphere; production Amala @ Artsphere

David Bellemere

www.art-dept.com

Art Department



David Bellemere

www.art-dept.com

Art Department



David Bellemere

www.art-dept.com

Art Department



David Bellemere

www.art-dept.com

Art Department



David Bellemere

www.art-dept.com

Art Department



David Bellemere

www.art-dept.com

Art Department



David Bellemere

www.art-dept.com

Art Department



David Bellemere

www.art-dept.com

Art Department



David Bellemere

www.art-dept.com

Art Department



David Bellemere

www.art-dept.com

Art Department



David Bellemere

www.art-dept.com