

Art Department

ARCHITECTURAL DIGEST

THE INTERNATIONAL DESIGN AUTHORITY JUNE 2021



Douglas Friedman

www.art-dept.com

Art Department



Douglas Friedman

www.art-dept.com

Art Department



THE CLIENTS' OWN CRYSTAL CHANDELIER CROWNS THE ENTERTAINMENT BARN, WHERE THE GLASS SLIDERS STRETCH 19 FEET TALL. THE CUSTOM SOFA IS COVERED IN PINDLER OUTDOOR FABRIC.

here's surely some *Beverly Hillbillies* quip that pertains to the home that actors Ashton Kutcher and Mila Kunis have built on a glorious hilltop site perched above the storied Los Angeles enclave. After all, the high-powered Hollywood transplants—he's from Iowa; she was born in Ukraine—dug a well on the property to irrigate the land, planted (and harvested) a field of corn during the COVID lockdown, and dubbed the place KuKu Farms. But while Jed, Granny, and the rest of the Clampetts embraced a far more traditional take on Beverly Hills splendor—the sprawling French Neoclassical mansion pictured in the series credits was designed by architect Summer Spaulding in the early 1930s and renovated by the legendary designer Henri Samuel in the 1980s—Kutcher and Kunis approached their passion project from a decidedly more modest perspective. “We wanted a home, not an estate,” Kunis insists, describing the six-acre property that now accommodates a main house connected to a guesthouse/entertainment barn, as well as a freestanding barbecue pavilion, all arrayed along a central axis

elaborately plotted to capture the beguiling views from, between, and through the various structures. “We wanted the house to look like an old barn, something that had been here for decades, that was then converted into a house. But it also had to feel modern and relevant,” Kutcher elaborates. The design-obsessed duo launched their five-year adventure by assembling independent Pinterest boards to flesh out their personal visions for the project. “Building a house from the ground up is no small thing. This was either going to make us or break us,” Kunis says of the potentially divisive undertaking. Happily, their aesthetic predilections seemed to dovetail neatly. “When we looked at each other's boards, 90 percent of the images we selected were the same, and most of the houses we pinned were designed by Howard,” Kutcher recalls, referring to architect Howard Backen of the AD100 firm Backen & Gilliam Architects. Backen, of course, is a master of the so-called modern farmhouse, renowned for his ability to coax a sense of poetry and a bright, contemporary spirit from distilled vernacular forms and rustic materials. The Kutcher/Kunis residence is a testament to his alchemical handling of reclaimed wood,



HECTOR FINCH PENDANTS ILLUMINATE THE SEBASTIAN COX KITCHEN BY DEVOL. FLOOR TILES BY TABARKA STUDIO. FIXTURES BY PERRIN & ROWE. AND LIGHT ABOVE BREAKFAST TABLE BY APPARATUS. BELOW THE PANTRY HAS SENECA TILES ON THE WALLS AND TABARKA STUDIO TILES ON THE FLOOR.

board-form concrete, and glass. “Howard is like a great software designer, someone who approaches design as an accentuation of function,” says Kutcher, who has broad experience in technology start-ups. “A software designer wants to get people where they want to be with the fewest clicks. Howard wants to get you where you want to be with the fewest doors and obstacles. He also knows that there are certain places where you want a barrier to mark a threshold and create a little friction,” Kutcher adds. For his part, Backen returns the compliment. “Ashton and Mila are two of the smartest, most inquisitive people we’ve ever worked with. We talked about everything from beam sizes to the details of the cross bracing to the junctures of the wood planks and concrete. These are not the kinds of conversations we have with every client,” says the architect. Stephanie Gerwin, Backen’s associate, seconds the notion. “They were out there with us, as genuine members of the design team, for every step of this long and complicated process,” she notes, emphasizing the couple’s commitment to creating a sustainable, nurturing home for themselves and their two young children, Wyatt and Dimitri. The house is entirely



Douglas Friedman

www.art-dept.com

Art Department



Douglas Friedman

www.art-dept.com

Art Department



ABOVE THE PRIMARY BATH HAS A DRUMMONDS TUB, GEORGE SMITH OTTOMAN, CORAGGIO SHEERS, AND A SILVER THRONE CHAIR CUSTOM DESIGNED BY KUTCHER ON A TRIP TO INDIA.

LEFT IN A STUDY JUST OFF THE PRIMARY BEDROOM, A GEORGE SMITH SOFA WITH CUSHIONS IN ZAK+FOX TEXTILES IS JOINED BY STAHL + BOND CHAIRS, A CISCO HOME TABLE, AND AN ALLIED MAKER SCENCE.



RIGHT AN INTIMATE COURTYARD HAS VIEWS THROUGH THE HOUSE AND OUT TO THE PANORAMIC HILLTOP SITE.

54 ARCHDIGEST.COM

ABOVE LOOKING OUT ACROSS THE VOLUMINOUS ENTERTAINMENT BARR, A GUEST ROOM HAS A CISCO HOME BED AND OTTOMAN AND VAUGHAN LAMPS. RIGHT AN RH TEEN LAMP HANGS IN THE GUEST BUNK ROOM.



Douglas Friedman

www.art-dept.com

Art Department



AT ONE END OF THE OPEN LIVING/DINING ROOM, A MATTHEW COX TABLE WITH STAHL + SAND CHAIRS RESTS ON AN ANTIQUE RUG FROM WOVEN. A DE LA ESPADA DESK WITH A VINTAGE LAMP FROM OBSOLETE SITS IN THE CORNER.

powered by photovoltaics, concealed from view above the expansive porch that stretches along one side of the main structure. In fact, the house's solar array produces significantly more power than the property requires, although antiquated municipal codes don't exactly encourage energy sharing—a situation the homeowners hope will change in the future. "Ashton and Mila are concerned about the quality of the soil, the purity of the food they eat and the water they drink. The ideals of sustainability and regenerative farming aren't just abstract concepts to them," Backen avers.

THE HOUSE'S REFINED architectural vocabulary and rugged materials palette provided a springboard for the work of AD100 interior designer Vicky Charles of Charles & Co., who joined the project just as she was exiting her post as global head of design for Soho House. "We were obsessed with Soho Farmhouse and other projects Vicky spearheaded. We loved the way she mixed fabrics, patterns, textures—really her whole aesthetic," Kunis says.

"Mila was pregnant with their first child when we began this journey. We spent months looking at materials and colors to find the right visual language. Our conversations were not just about the land and the architecture but also about the future of their family," Charles recalls. "Over time, the design moved away from a traditional farmhouse aesthetic to

something more contemporary. Wrought-iron chandeliers and big chesterfields were the wrong clothes for this body," she adds.

In addition to new, crisply tailored tables and plush, super-comfortable seating, Charles incorporated elements from her clients' previous homes, notably a set of custom silver throne chairs that Kutcher commissioned on a trip to India and an extravagant 10-foot-long crystal chandelier that seemed completely antithetical to the architecture's humble forms and timeworn materials. "I got this job because I promised I could make a home for those, shall we say, formidable pieces," Charles jokes. Ultimately she placed a pair of chairs in the primary bath—thrones for the throne room—and installed the chandelier in the towering entertainment pavilion. "We thought it would be funny to have this incredibly opulent thing hanging in a barn. It kind of takes the piss out of the property," Kunis says of the improbable crystal confection.

Notwithstanding those notes of self-effacing levity, the soul of the Kutcher/Kunis residence remains tied to the meticulous planning and fanatical attention to detail that the homeowners and their designers lavished on every aspect of the project. "To feel tranquility in a space, everything needs to be in order," Kutcher concludes. "If the world around you isn't in order, it's hard to get your brain in order. When we're in our home, the world just makes sense." ▀



"We wanted the house to look like an old barn, something that had been here for decades, that was then converted into a house," Kutcher notes.

MONTAUK SOFAS, A VAUGHAN STANDING LAMP AND AN ANTIQUE RUG FROM WOVEN. MARIT THE LIVING ROOM, WHERE THE SEAMS OF BOARD-FORM CONCRETE WALLS ARE PERFECTLY ALIGNED WITH RECLAIMED-OAK FLOOR PLANKS.

Douglas Friedman

www.art-dept.com

Art Department



Douglas Friedman

www.art-dept.com

Art Department



Douglas Friedman

www.art-dept.com

Art Department



Douglas Friedman

www.art-dept.com

Art Department



Douglas Friedman

www.art-dept.com

Art Department



Douglas Friedman

www.art-dept.com

Art Department



Douglas Friedman

www.art-dept.com

Art Department

ARCHITECTURAL DIGEST

THE INTERNATIONAL DESIGN AUTHORITY
AUTUMN 2020 MIDDLE EAST



Douglas Friedman

www.art-dept.com

Art Department



Douglas Friedman

www.art-dept.com

Art Department



Douglas Friedman

www.art-dept.com

Art Department



Douglas Friedman

www.art-dept.com

Art Department



Douglas Friedman

www.art-dept.com

Art Department



Douglas Friedman

www.art-dept.com

Art Department



Douglas Friedman

www.art-dept.com

Art Department



Douglas Friedman

www.art-dept.com

Art Department



Douglas Friedman

www.art-dept.com

Art Department



Douglas Friedman

www.art-dept.com

Art Department



Douglas Friedman

www.art-dept.com

Art Department



Douglas Friedman

www.art-dept.com

Art Department



Douglas Friedman

www.art-dept.com

Art Department



Douglas Friedman

www.art-dept.com

Art Department



Douglas Friedman

www.art-dept.com

Art Department



Douglas Friedman

www.art-dept.com

Art Department



Douglas Friedman

www.art-dept.com

Art Department



Douglas Friedman

www.art-dept.com

Art Department



Douglas Friedman

www.art-dept.com

Art Department



Douglas Friedman

www.art-dept.com

Art Department



Douglas Friedman

www.art-dept.com

Art Department



Douglas Friedman

www.art-dept.com

Art Department



Douglas Friedman

www.art-dept.com

Art Department



Douglas Friedman

www.art-dept.com

Art Department



Douglas Friedman

www.art-dept.com

Art Department



Douglas Friedman

www.art-dept.com

Art Department



Douglas Friedman

www.art-dept.com

Art Department



Douglas Friedman

www.art-dept.com

Art Department

After jetting around the globe to document the lifestyles of the rich and famous, photographer *Douglas Friedman* takes refuge on an otherworldly site in Marfa, Texas

TEXT BY **MAYER RUS** PHOTOGRAPHY BY **DOUGLAS FRIEDMAN** STYLED BY **MICHAEL REYNOLDS**

home on the range



Douglas Friedman

www.art-dept.com

Art Department



Douglas Friedman

www.art-dept.com

Art Department



Douglas Friedman

www.art-dept.com

Art Department



Douglas Friedman

www.art-dept.com

Art Department



Douglas Friedman

www.art-dept.com

Art Department



Douglas Friedman

www.art-dept.com

Art Department



Douglas Friedman

www.art-dept.com

Art Department



Douglas Friedman

www.art-dept.com

Art Department



Douglas Friedman

www.art-dept.com

Art Department



Douglas Friedman

www.art-dept.com

Art Department



Douglas Friedman

www.art-dept.com

Art Department



Douglas Friedman

www.art-dept.com

Art Department



Douglas Friedman

www.art-dept.com

Art Department

ARCHITECTURAL DIGEST

THE INTERNATIONAL DESIGN AUTHORITY NOVEMBER 2019



AD at 100
a century of style

PLUS
74 great
kitchen ideas

the house that
instagram built
cofounder kevin systrom's
lake tahoe getaway

go west
the california issue

Douglas Friedman

www.art-dept.com

Art Department



Douglas Friedman

www.art-dept.com

Art Department



Douglas Friedman

www.art-dept.com

Art Department



Douglas Friedman

www.art-dept.com

Art Department



Douglas Friedman

www.art-dept.com

Art Department



Douglas Friedman

www.art-dept.com

Art Department



Douglas Friedman

www.art-dept.com

Art Department



Douglas Friedman

www.art-dept.com

Art Department



Douglas Friedman

www.art-dept.com

Art Department



Douglas Friedman

www.art-dept.com

Art Department



Douglas Friedman

www.art-dept.com

Art Department



Douglas Friedman

www.art-dept.com

Art Department

ARCHITECTURAL DIGEST

THE INTERNATIONAL DESIGN AUTHORITY JULY/AUGUST 2019



Douglas Friedman

www.art-dept.com

Art Department



Douglas Friedman

www.art-dept.com

Art Department



Douglas Friedman

www.art-dept.com

Art Department



Douglas Friedman

www.art-dept.com

Art Department



Douglas Friedman

www.art-dept.com

Art Department



Douglas Friedman

www.art-dept.com

Art Department



Douglas Friedman

www.art-dept.com

Art Department



Douglas Friedman

www.art-dept.com

Art Department



Douglas Friedman

www.art-dept.com

Art Department



Douglas Friedman

www.art-dept.com

Art Department



Douglas Friedman

www.art-dept.com

Art Department

ARCHITECTURAL DIGEST

THE INTERNATIONAL DESIGN AUTHORITY APRIL 2019



Douglas Friedman

www.art-dept.com

Art Department



Douglas Friedman

www.art-dept.com

Art Department



Douglas Friedman

www.art-dept.com

Art Department



Douglas Friedman

www.art-dept.com

Art Department



Douglas Friedman

www.art-dept.com

Art Department



Douglas Friedman

www.art-dept.com

Art Department



Douglas Friedman

www.art-dept.com

Art Department



Douglas Friedman

www.art-dept.com

Art Department



Douglas Friedman

www.art-dept.com

Art Department



Douglas Friedman

www.art-dept.com

Art Department

ARCHITECTURAL DIGEST

THE INTERNATIONAL DESIGN AUTHORITY MARCH 2019



AD

KYLIE JENNER
LIVING
PRETTY
IN L.A.
+
KRIS JENNER'S PRIVATE GETAWAY

STAR POWER COAST TO COAST
SETH MEYERS
ELLEN DEGENERES
TORY BURCH
DEREK BLASBERG

PLUS: MARIO BUATTA'S GRAND FINALE

Douglas Friedman

www.art-dept.com

Art Department



Douglas Friedman

www.art-dept.com

Art Department



Douglas Friedman

www.art-dept.com

Art Department



Douglas Friedman

www.art-dept.com

Art Department



Douglas Friedman

www.art-dept.com

Art Department



Douglas Friedman

www.art-dept.com

Art Department



Douglas Friedman

www.art-dept.com

Art Department



Douglas Friedman

www.art-dept.com

Art Department



Douglas Friedman

www.art-dept.com

Art Department



Douglas Friedman

www.art-dept.com

Art Department



Douglas Friedman

www.art-dept.com

Art Department



Douglas Friedman

www.art-dept.com

Art Department



Douglas Friedman

www.art-dept.com

Art Department



Douglas Friedman

www.art-dept.com

Art Department



Douglas Friedman

www.art-dept.com

Art Department



Douglas Friedman

www.art-dept.com

Art Department



Douglas Friedman

www.art-dept.com

Art Department



Douglas Friedman

www.art-dept.com

Art Department

ARCHITECTURAL DIGEST

THE INTERNATIONAL DESIGN AUTHORITY NOVEMBER 2018



The cover of Architectural Digest magazine features a photograph of supermodel Alessandra Ambrosio and her family in a modern, high-ceilinged living room. The room has exposed wooden beams, a large chandelier, and a wall covered in framed art. A piano is visible in the background. The family consists of a woman, a young girl, and a young boy. The magazine's logo 'AD' is prominently displayed in the upper left. Text on the cover includes '76 KITCHEN TRENDS, FIXES & FINDS', 'DREAM RENOS! FROM BROOKLYN TO LONDON', and 'FAMILY PORTRAIT SUPERMODEL ALESSANDRA AMBROSIO IN SANTA MONICA'.

AD

76
KITCHEN
TRENDS, FIXES
& FINDS

**DREAM
RENOS!**
FROM
BROOKLYN
TO LONDON

**FAMILY
PORTRAIT**
SUPERMODEL
ALESSANDRA AMBROSIO
IN SANTA MONICA

Douglas Friedman

www.art-dept.com

Art Department



Douglas Friedman

www.art-dept.com

Art Department



Douglas Friedman

www.art-dept.com

Art Department



Douglas Friedman

www.art-dept.com

Art Department



Douglas Friedman

www.art-dept.com

Art Department



Douglas Friedman

www.art-dept.com

Art Department



Douglas Friedman

www.art-dept.com

Art Department



Douglas Friedman

www.art-dept.com

Art Department



Douglas Friedman

www.art-dept.com

Art Department



Douglas Friedman

www.art-dept.com

Art Department



Douglas Friedman

www.art-dept.com

Art Department



Douglas Friedman

www.art-dept.com

Art Department



Douglas Friedman

www.art-dept.com

Art Department



Douglas Friedman

www.art-dept.com

Art Department



Douglas Friedman

www.art-dept.com

Art Department



Douglas Friedman

www.art-dept.com

Art Department



Douglas Friedman

www.art-dept.com

Art Department



Douglas Friedman

www.art-dept.com

Art Department

ARCHITECTURAL DIGEST

THE INTERNATIONAL DESIGN AUTHORITY JUNE 2018



The cover of Architectural Digest magazine features a photograph of actor Liev Schreiber standing in a modern kitchen. He is wearing a black long-sleeved shirt, black pants, and white sneakers. The kitchen has dark wood cabinetry, a black countertop, and a stainless steel toaster. A large, stylized pink 'AD' logo is overlaid on the left side of the image. On the right, a framed red 'TABAC' sign is mounted on the wall. The text 'LIEV SCHREIBER INSIDE THE STAR'S NEW YORK LOFT' is on the left, and 'WEEKEND READY COUNTRY HOUSES FROM CARMEL TO NANTUCKET + SUMMER SHOPPING: POOL, BEACH, BARBECUE' is on the right.

LIEV
SCHREIBER
INSIDE THE STAR'S
NEW YORK LOFT

WEEKEND
READY
COUNTRY HOUSES
FROM CARMEL
TO NANTUCKET
+
SUMMER SHOPPING:
POOL, BEACH, BARBECUE

Douglas Friedman

www.art-dept.com

Art Department

ARCHITECTURAL DIGEST

THE INTERNATIONAL DESIGN AUTHORITY

OCTOBER 2015

Smart Moves

**NATE BERKUS +
JEREMIAH BRENT'S
DOMESTIC BLISS**

**HOW AD'S 2015
INNOVATORS
ARE CHANGING
THE WORLD**

**THE U.S. EMBASSY
IN SPAIN
GETS A CHIC
NEW LOOK**

**PLUS
SAN FRANCISCO'S
DESIGN BOOM**



Douglas Friedman

www.art-dept.com

Art Department



Douglas Friedman

www.art-dept.com

Art Department



Douglas Friedman

www.art-dept.com

Art Department



Douglas Friedman

www.art-dept.com

Art Department



Douglas Friedman

www.art-dept.com

Art Department



Douglas Friedman

www.art-dept.com

Art Department



Douglas Friedman

www.art-dept.com

Art Department



Douglas Friedman

www.art-dept.com

Art Department



Douglas Friedman

www.art-dept.com

Art Department



Douglas Friedman

www.art-dept.com

Art Department



Douglas Friedman

www.art-dept.com

Art Department



Douglas Friedman

www.art-dept.com

Art Department



Douglas Friedman

www.art-dept.com

Art Department



Douglas Friedman

www.art-dept.com

Art Department

ARCHITECTURAL DIGEST

THE INTERNATIONAL DESIGN AUTHORITY

DECEMBER 2015



**THE
ART
ISSUE**

AT HOME WITH
TODAY'S TOP
COLLECTORS

8
ARTISTS TO
DISCOVER
NOW

PLUS:
YOUR
ULTIMATE
HOLIDAY
GIFT GUIDE

Douglas Friedman

www.art-dept.com

Art Department



Douglas Friedman

www.art-dept.com

Art Department



Douglas Friedman

www.art-dept.com

Art Department



Douglas Friedman

www.art-dept.com

Art Department



Douglas Friedman

www.art-dept.com

Art Department



Douglas Friedman

www.art-dept.com

Art Department



Douglas Friedman

www.art-dept.com

Art Department



Douglas Friedman

www.art-dept.com

Art Department



Douglas Friedman

www.art-dept.com

Art Department



Douglas Friedman

www.art-dept.com

Art Department



Douglas Friedman

www.art-dept.com

Art Department



Douglas Friedman

www.art-dept.com

Art Department



Douglas Friedman

www.art-dept.com

Art Department



Douglas Friedman

www.art-dept.com

Art Department



Douglas Friedman

www.art-dept.com

Art Department



Douglas Friedman

www.art-dept.com

Art Department



Douglas Friedman

www.art-dept.com

Art Department



Douglas Friedman

www.art-dept.com

Art Department



Douglas Friedman

www.art-dept.com

Art Department



Douglas Friedman

www.art-dept.com

Art Department



Douglas Friedman

www.art-dept.com

Art Department



Douglas Friedman

www.art-dept.com

Art Department



Douglas Friedman

www.art-dept.com

Art Department



Douglas Friedman

www.art-dept.com

Art Department



Douglas Friedman

www.art-dept.com

Art Department



Douglas Friedman

www.art-dept.com

Art Department



Douglas Friedman

www.art-dept.com

Art Department



Douglas Friedman

www.art-dept.com

Art Department



Douglas Friedman

www.art-dept.com

Art Department



Douglas Friedman

www.art-dept.com

Art Department



Douglas Friedman

www.art-dept.com

Art Department



Douglas Friedman

www.art-dept.com

Art Department



Douglas Friedman

www.art-dept.com

Art Department



Douglas Friedman

www.art-dept.com

Art Department



Douglas Friedman

www.art-dept.com

Art Department



Douglas Friedman

www.art-dept.com

Art Department



Douglas Friedman

www.art-dept.com

Art Department



Douglas Friedman

www.art-dept.com

Art Department



Douglas Friedman

www.art-dept.com

Art Department



Douglas Friedman

www.art-dept.com

Art Department



Douglas Friedman

www.art-dept.com

Art Department



Douglas Friedman

www.art-dept.com

Art Department



Douglas Friedman

www.art-dept.com

Art Department



Douglas Friedman

www.art-dept.com

Art Department



Douglas Friedman

www.art-dept.com

Art Department



Douglas Friedman

www.art-dept.com

Art Department



Douglas Friedman

www.art-dept.com

Art Department



Douglas Friedman

www.art-dept.com

Art Department



Douglas Friedman

www.art-dept.com

Art Department



Douglas Friedman

www.art-dept.com

Art Department



Douglas Friedman

www.art-dept.com

Art Department



Douglas Friedman

www.art-dept.com

Art Department



Douglas Friedman

www.art-dept.com

Art Department



Douglas Friedman

www.art-dept.com

Art Department



Douglas Friedman

www.art-dept.com

Art Department



Douglas Friedman

www.art-dept.com

Art Department



Douglas Friedman

www.art-dept.com

Art Department



Douglas Friedman

www.art-dept.com

Art Department



Douglas Friedman

www.art-dept.com

Art Department



Douglas Friedman

www.art-dept.com

Art Department



Douglas Friedman

www.art-dept.com

Art Department



Douglas Friedman

www.art-dept.com

Art Department



Douglas Friedman

www.art-dept.com

Art Department



Douglas Friedman

www.art-dept.com

Art Department



Douglas Friedman

www.art-dept.com

Art Department



Douglas Friedman

www.art-dept.com

Art Department



Douglas Friedman

www.art-dept.com

Art Department



Douglas Friedman

www.art-dept.com

Art Department



Douglas Friedman

www.art-dept.com

Art Department



Douglas Friedman

www.art-dept.com

Art Department



Douglas Friedman

www.art-dept.com

Art Department



Douglas Friedman

www.art-dept.com

Art Department



Douglas Friedman

www.art-dept.com

Art Department



Douglas Friedman

www.art-dept.com

Art Department



Douglas Friedman

www.art-dept.com

Art Department



Douglas Friedman

www.art-dept.com

Art Department



Douglas Friedman

www.art-dept.com

Art Department



Douglas Friedman

www.art-dept.com

Art Department



Douglas Friedman

www.art-dept.com

Art Department



Douglas Friedman

www.art-dept.com

Art Department



Douglas Friedman

www.art-dept.com

Art Department



Douglas Friedman

www.art-dept.com

Art Department



Douglas Friedman

www.art-dept.com

Art Department



Douglas Friedman

www.art-dept.com

Art Department



Douglas Friedman

www.art-dept.com

Art Department



Douglas Friedman

www.art-dept.com

Art Department



Douglas Friedman

www.art-dept.com

Art Department



Douglas Friedman

www.art-dept.com

Art Department



Douglas Friedman

www.art-dept.com

Art Department



Douglas Friedman

www.art-dept.com

Art Department



Douglas Friedman

www.art-dept.com

Art Department



Douglas Friedman

www.art-dept.com

Art Department



Douglas Friedman

www.art-dept.com

Art Department



Douglas Friedman

www.art-dept.com

Art Department



Douglas Friedman

www.art-dept.com

Art Department



Douglas Friedman

www.art-dept.com

Art Department



Douglas Friedman

www.art-dept.com

Art Department



Douglas Friedman

www.art-dept.com

Art Department



Douglas Friedman

www.art-dept.com

Art Department



Douglas Friedman

www.art-dept.com

Art Department



Douglas Friedman

www.art-dept.com

Art Department



Douglas Friedman

www.art-dept.com

Art Department



Douglas Friedman

www.art-dept.com

Art Department



Douglas Friedman

www.art-dept.com

Art Department



Douglas Friedman

www.art-dept.com

Art Department



Douglas Friedman

www.art-dept.com

Art Department



Douglas Friedman

www.art-dept.com

Art Department



Douglas Friedman

www.art-dept.com

Art Department



Douglas Friedman

www.art-dept.com

Art Department



Douglas Friedman

www.art-dept.com

Art Department



Douglas Friedman

www.art-dept.com

Art Department



Douglas Friedman

www.art-dept.com

Art Department



Douglas Friedman

www.art-dept.com

Art Department



Douglas Friedman

www.art-dept.com

Art Department



Douglas Friedman

www.art-dept.com

Art Department



Douglas Friedman

www.art-dept.com

Art Department



Douglas Friedman

www.art-dept.com

Art Department



Douglas Friedman

www.art-dept.com

Art Department



Douglas Friedman

www.art-dept.com

Art Department



Douglas Friedman

www.art-dept.com

Art Department



Douglas Friedman

www.art-dept.com

Art Department



Douglas Friedman

www.art-dept.com

Art Department



Douglas Friedman

www.art-dept.com

Art Department



Douglas Friedman

www.art-dept.com

Art Department



Douglas Friedman

www.art-dept.com

Art Department



Douglas Friedman

www.art-dept.com

Art Department



Douglas Friedman

www.art-dept.com

Art Department



Douglas Friedman

www.art-dept.com

Art Department



Douglas Friedman

www.art-dept.com

Art Department



Douglas Friedman

www.art-dept.com

Art Department



Douglas Friedman

www.art-dept.com

Art Department



Douglas Friedman

www.art-dept.com

Art Department



Douglas Friedman

www.art-dept.com

Art Department



Douglas Friedman

www.art-dept.com

Art Department



Douglas Friedman

www.art-dept.com

Art Department



Douglas Friedman

www.art-dept.com

Art Department



Douglas Friedman

www.art-dept.com

Art Department



Douglas Friedman

www.art-dept.com

Art Department



Douglas Friedman

www.art-dept.com

Art Department



Douglas Friedman

www.art-dept.com

Art Department



Douglas Friedman

www.art-dept.com

Art Department



Douglas Friedman

www.art-dept.com

Art Department



Douglas Friedman

www.art-dept.com

Art Department



Douglas Friedman

www.art-dept.com

Art Department



Douglas Friedman

www.art-dept.com

Art Department



Douglas Friedman

www.art-dept.com

Art Department



Douglas Friedman

www.art-dept.com

Art Department



Douglas Friedman

www.art-dept.com

Art Department



Douglas Friedman

www.art-dept.com

Art Department



Douglas Friedman

www.art-dept.com

Art Department



Douglas Friedman

www.art-dept.com

Art Department



Douglas Friedman

www.art-dept.com

Art Department



Douglas Friedman

www.art-dept.com

Art Department



Douglas Friedman

www.art-dept.com

Art Department



Douglas Friedman

www.art-dept.com

Art Department



Douglas Friedman

www.art-dept.com

Art Department



Douglas Friedman

www.art-dept.com

Art Department



Douglas Friedman

www.art-dept.com

Art Department



Douglas Friedman

www.art-dept.com

Art Department



Douglas Friedman

www.art-dept.com

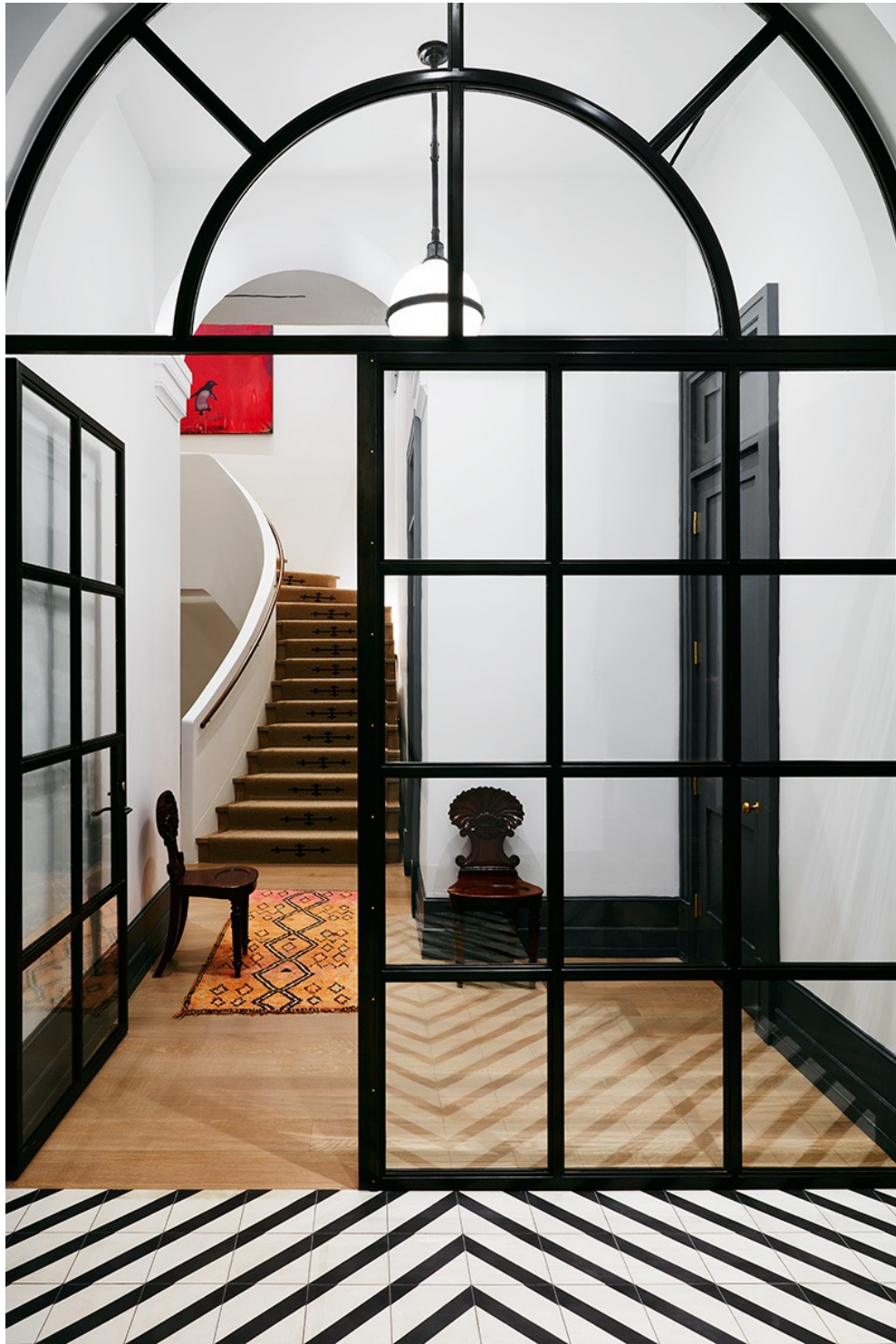
Art Department



Douglas Friedman

www.art-dept.com

Art Department



Douglas Friedman

www.art-dept.com

Art Department



Douglas Friedman

www.art-dept.com

Art Department



Douglas Friedman

www.art-dept.com

Art Department



Douglas Friedman

www.art-dept.com

Art Department



Douglas Friedman

www.art-dept.com

Art Department



Douglas Friedman

www.art-dept.com

Art Department



Douglas Friedman

www.art-dept.com

Art Department



Douglas Friedman

www.art-dept.com

Art Department



Douglas Friedman

www.art-dept.com

Art Department



Douglas Friedman

www.art-dept.com

Art Department



Douglas Friedman

www.art-dept.com

Art Department



Douglas Friedman

www.art-dept.com

Art Department



Douglas Friedman

www.art-dept.com

Art Department



Douglas Friedman

www.art-dept.com

Art Department



Douglas Friedman

www.art-dept.com

Art Department



Douglas Friedman

www.art-dept.com

Art Department



Douglas Friedman

www.art-dept.com

Art Department



Douglas Friedman

www.art-dept.com

Art Department



Douglas Friedman

www.art-dept.com

Art Department



Douglas Friedman

www.art-dept.com

Art Department



Douglas Friedman

www.art-dept.com

Art Department



Douglas Friedman

www.art-dept.com

Art Department



Douglas Friedman

www.art-dept.com

Art Department



Douglas Friedman

www.art-dept.com

Art Department



Douglas Friedman

www.art-dept.com

Art Department



Douglas Friedman

www.art-dept.com

Art Department



Douglas Friedman

www.art-dept.com

Art Department



Douglas Friedman

www.art-dept.com

Art Department



Douglas Friedman

www.art-dept.com

Art Department



Douglas Friedman

www.art-dept.com

Art Department



Douglas Friedman

www.art-dept.com

Art Department



Douglas Friedman

www.art-dept.com

Art Department



Douglas Friedman

www.art-dept.com

Art Department



Douglas Friedman

www.art-dept.com

Art Department



Douglas Friedman

www.art-dept.com

Art Department



Douglas Friedman

www.art-dept.com

Art Department



Douglas Friedman

www.art-dept.com

Art Department



Douglas Friedman

www.art-dept.com

Art Department



Douglas Friedman

www.art-dept.com

Art Department



Douglas Friedman

www.art-dept.com

Art Department



Douglas Friedman

www.art-dept.com

Art Department



Douglas Friedman

www.art-dept.com

Art Department



Douglas Friedman

www.art-dept.com

Art Department



Douglas Friedman

www.art-dept.com

Art Department



Douglas Friedman

www.art-dept.com

Art Department



Douglas Friedman

www.art-dept.com

Art Department



Douglas Friedman

www.art-dept.com

Art Department



Douglas Friedman

www.art-dept.com

Art Department



Douglas Friedman

www.art-dept.com

Art Department



Douglas Friedman

www.art-dept.com

Art Department



Douglas Friedman

www.art-dept.com

Art Department



Douglas Friedman

www.art-dept.com

Art Department



Douglas Friedman

www.art-dept.com

Art Department



Douglas Friedman

www.art-dept.com

Art Department



Douglas Friedman

www.art-dept.com

Art Department



Douglas Friedman

www.art-dept.com

Art Department



Douglas Friedman

www.art-dept.com

Art Department



Douglas Friedman

www.art-dept.com

Art Department



Douglas Friedman

www.art-dept.com

Art Department



Douglas Friedman

www.art-dept.com

Art Department



Douglas Friedman

www.art-dept.com

Art Department



Douglas Friedman

www.art-dept.com

Art Department



Douglas Friedman

www.art-dept.com

Art Department



Douglas Friedman

www.art-dept.com

Art Department



Douglas Friedman

www.art-dept.com

Art Department



Douglas Friedman

www.art-dept.com

Art Department

ARCHITECTURAL DIGEST

THE INTERNATIONAL DESIGN AUTHORITY

SEPTEMBER 2014



Always in Style

FASHION INSIDERS OPEN THEIR DOORS

AD VISITS
DEE + TOMMY HILFIGER

NATALIE MASSENET
FRANCISCO COSTA
TORY BURCH
ISAAC MIZRAHI
CARLOS SOUZA
ADAM LIPPES
STEVEN KLEIN

PLUS
MARELLA AGNELLI'S
ROMANTIC
ITALIAN VILLA

Douglas Friedman

www.art-dept.com

Art Department



Douglas Friedman

www.art-dept.com

Art Department



Douglas Friedman

www.art-dept.com

Art Department



Douglas Friedman

www.art-dept.com

Art Department



Douglas Friedman

www.art-dept.com

Art Department



Douglas Friedman

www.art-dept.com

Art Department



Douglas Friedman

www.art-dept.com

Art Department



Douglas Friedman

www.art-dept.com

Art Department



Douglas Friedman

www.art-dept.com

Art Department



Douglas Friedman

www.art-dept.com

Art Department



Douglas Friedman

www.art-dept.com

Art Department



Douglas Friedman

www.art-dept.com

Art Department



Douglas Friedman

www.art-dept.com