

Art Department

ARCHITECTURAL DIGEST

THE INTERNATIONAL DESIGN AUTHORITY DECEMBER 2021



Frank Frances

www.art-dept.com

Art Department



Frank Frances

www.art-dept.com

Art Department



Frank Frances

www.art-dept.com

Art Department



Frank Frances

www.art-dept.com

Art Department



Frank Frances

www.art-dept.com

Art Department



Frank Frances

www.art-dept.com

Art Department



Frank Frances

www.art-dept.com

Art Department



Frank Frances

www.art-dept.com

Art Department



Frank Frances

www.art-dept.com

Art Department



Frank Frances

www.art-dept.com

Art Department



Frank Frances

www.art-dept.com

Art Department



Frank Frances

www.art-dept.com

Art Department



Frank Frances

www.art-dept.com

Art Department



Frank Frances

www.art-dept.com

Art Department



Frank Frances

www.art-dept.com

Art Department



A HAND-CARVED SOLID BLEACHED WALNUT MONOLITHIC DINING TABLE, CUSTOM-BUILT BY FIELD & CO. WOODWORKING OVER THE COURSE OF TWO YEARS, ANCHORS THE DINING AREA. BLACK CHAIRS BY FAIR; RESIN TALL-BACK CHAIR BY RAY AUGUSTI; SCULPTURAL BENCH BY CASTE. FOR DETAILS SEE RESOURCES.

CLEAR VISION

An airy, expansive house in East Hampton makes an ideal getaway for *Hugh Jackman* and *Deborah-lee Furness*

TEXT BY ARIEL FOXMAN PHOTOGRAPHY BY FRANK FRANCES STYLED BY MICHAEL REYNOLDS

ARCHDIGEST.COM 79

Frank Frances

www.art-dept.com

Art Department



Frank Frances

www.art-dept.com

Art Department



Frank Frances

www.art-dept.com

Art Department



Frank Frances

www.art-dept.com

Art Department



Frank Frances

www.art-dept.com

Art Department



Frank Frances

www.art-dept.com

Art Department



Frank Frances

www.art-dept.com

Art Department



Frank Frances

www.art-dept.com

Art Department



Frank Frances

www.art-dept.com

Art Department



Frank Frances

www.art-dept.com

Art Department



Frank Frances

www.art-dept.com

Art Department

Darryl Carter conjures a calm, modern oasis for a family in Washington, D.C.

TEXT BY CATHERINE HONG PHOTOGRAPHY BY FRANK FRANCES
STYLED BY HILARY ROBERTSON

IN THE DINING ROOM, TWO SCULPTURAL LIGHT FIXTURES BY TED ABRAMCZYK HANG ABOVE A CUSTOM TABLE BY DARRYL CARTER SURROUNDED BY ALFREDO HÄBERLI CHAIRS UPHOLSTERED WITH LEATHER. SCULPTURE ON PEDESTAL (AT LEFT) BY CHRISTOPHER STUART; ARTWORK OVER FIREPLACE BY MANFRED MÜLLER. FOR DETAILS SEE RESOURCES.



REAL SIMPLE

Frank Frances

www.art-dept.com

Art Department



Frank Frances

www.art-dept.com

Art Department



Frank Frances

www.art-dept.com

Art Department



Frank Frances

www.art-dept.com

Art Department



Frank Frances

www.art-dept.com

Art Department



Frank Frances

www.art-dept.com

Art Department



Frank Frances

www.art-dept.com

Art Department



Frank Frances

www.art-dept.com

Art Department



Frank Frances

www.art-dept.com

Art Department



Frank Frances

www.art-dept.com

Art Department



Frank Frances

www.art-dept.com

Art Department



Frank Frances

www.art-dept.com

Art Department



Frank Frances

www.art-dept.com

Art Department



Frank Frances

www.art-dept.com

Art Department



Frank Frances

www.art-dept.com

Art Department



Frank Frances

www.art-dept.com

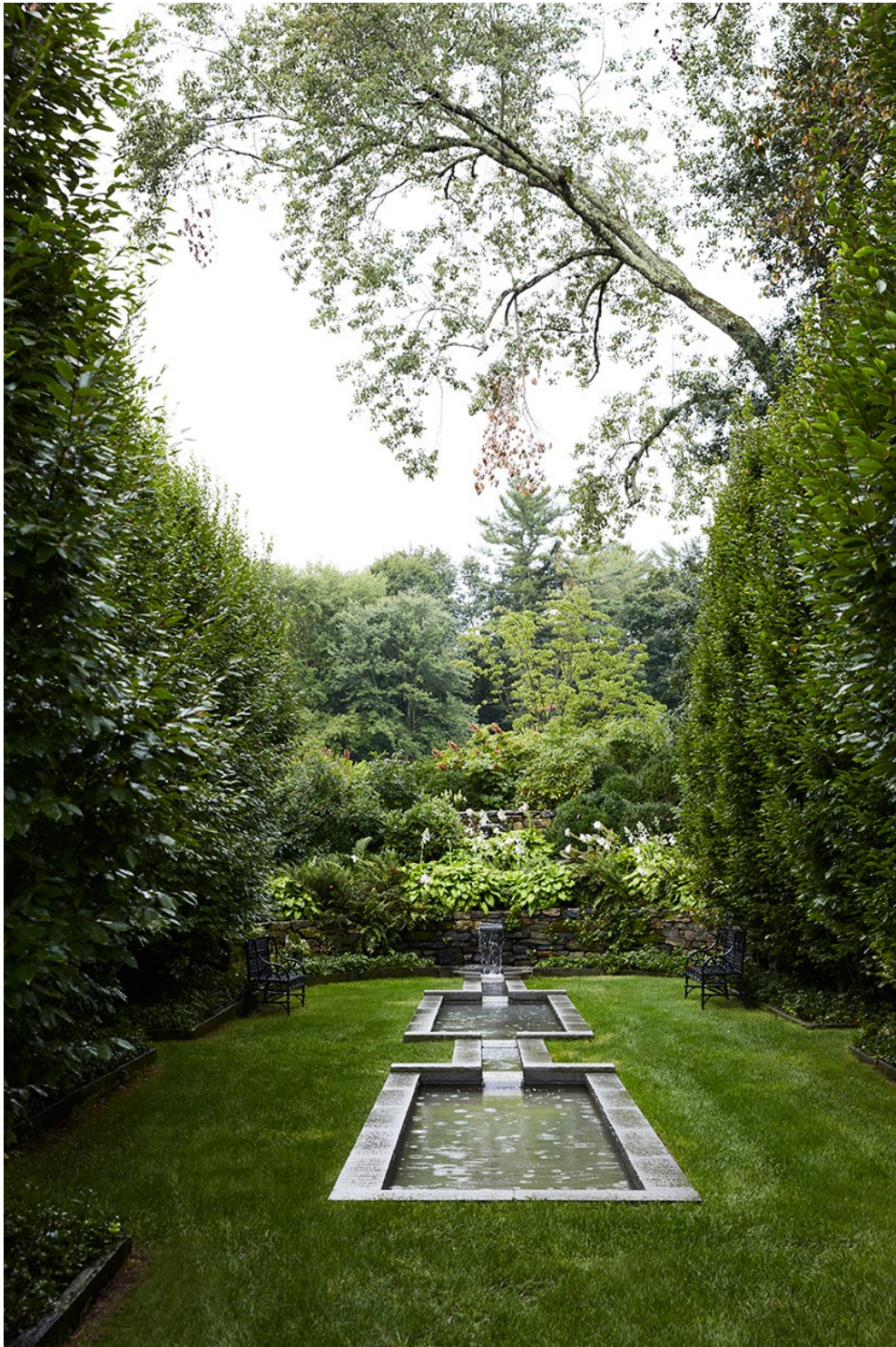
Art Department



Frank Frances

www.art-dept.com

Art Department



Frank Frances

www.art-dept.com

Art Department



Frank Frances

www.art-dept.com

Art Department



Frank Frances

www.art-dept.com

Art Department



Frank Frances

www.art-dept.com

Art Department



Frank Frances

www.art-dept.com

Art Department



Frank Frances

www.art-dept.com

Art Department



Frank Frances

www.art-dept.com

Art Department



Frank Frances

www.art-dept.com

Art Department



Frank Frances

www.art-dept.com

Art Department



Frank Frances

www.art-dept.com

Art Department



Frank Frances

www.art-dept.com

Art Department



Frank Frances

www.art-dept.com

Art Department



Frank Frances

www.art-dept.com

Art Department



Frank Frances

www.art-dept.com

Art Department



Frank Frances

www.art-dept.com

Art Department



Frank Frances

www.art-dept.com

Art Department



Frank Frances

www.art-dept.com

Art Department



Frank Frances

www.art-dept.com

Art Department



Frank Frances

www.art-dept.com

Art Department



Frank Frances

www.art-dept.com

Art Department



Frank Frances

www.art-dept.com

Art Department



Frank Frances

www.art-dept.com

Art Department



Frank Frances

www.art-dept.com

Art Department



Frank Frances

www.art-dept.com

Art Department



Frank Frances

www.art-dept.com

Art Department



Frank Frances

www.art-dept.com

Art Department



Frank Frances

www.art-dept.com

Art Department



Frank Frances

www.art-dept.com

Art Department



Frank Frances

www.art-dept.com

Art Department



Frank Frances

www.art-dept.com

Art Department



Frank Frances

www.art-dept.com

Art Department



Frank Frances

www.art-dept.com

Art Department



Frank Frances

www.art-dept.com

Art Department



Frank Frances

www.art-dept.com

Art Department



Frank Frances

www.art-dept.com

Art Department



Frank Frances

www.art-dept.com

Art Department



Frank Frances

www.art-dept.com

Art Department



Frank Frances

www.art-dept.com

Art Department



Frank Frances

www.art-dept.com

Art Department



Frank Frances

www.art-dept.com

Art Department



Frank Frances

www.art-dept.com

Art Department



Frank Frances

www.art-dept.com

Art Department



Frank Frances

www.art-dept.com

Art Department



Frank Frances

www.art-dept.com

Art Department



Frank Frances

www.art-dept.com

Art Department



Frank Frances

www.art-dept.com

Art Department



Frank Frances

www.art-dept.com

Art Department



Frank Frances

www.art-dept.com

Art Department



Frank Frances

www.art-dept.com

Art Department



Frank Frances

www.art-dept.com

Art Department



Frank Frances

www.art-dept.com

Art Department



Frank Frances

www.art-dept.com

Art Department



Frank Frances

www.art-dept.com

Art Department



Frank Frances

www.art-dept.com

Art Department



Frank Frances

www.art-dept.com

Art Department



Frank Frances

www.art-dept.com

Art Department



Frank Frances

www.art-dept.com

Art Department



Frank Frances

www.art-dept.com

Art Department



Frank Frances

www.art-dept.com

Art Department



Frank Frances

www.art-dept.com

Art Department



Frank Frances

www.art-dept.com

Art Department



Frank Frances

www.art-dept.com

Art Department



Frank Frances

www.art-dept.com

Art Department



Frank Frances

www.art-dept.com

Art Department



Frank Frances

www.art-dept.com

Art Department



Frank Frances

www.art-dept.com

Art Department



Frank Frances

www.art-dept.com

Art Department



Frank Frances

www.art-dept.com

Art Department



Frank Frances

www.art-dept.com

Art Department



Frank Frances

www.art-dept.com

Art Department



Frank Frances

www.art-dept.com

Art Department



Frank Frances

www.art-dept.com

Art Department



Frank Frances

www.art-dept.com

Art Department



Frank Frances

www.art-dept.com

Art Department



Frank Frances

www.art-dept.com

Art Department



Frank Frances

www.art-dept.com

Art Department



Frank Frances

www.art-dept.com

Art Department



Frank Frances

www.art-dept.com

Art Department



Frank Frances

www.art-dept.com

Art Department



Frank Frances

www.art-dept.com

Art Department



Frank Frances

www.art-dept.com

Art Department



Frank Frances

www.art-dept.com

Art Department

THE ONE

Bloomberg Pursuits

October 12, 2020

Boot Luger

A transformative design reinvents an overlooked mountain staple
Photograph by Frank Frances

Boot bags have traditionally suffered from two problems: Their bulky shape is difficult to pack or travel with; and, in general, they lack the stylish flair that's otherwise pervaded accessories meant for the mountain. The Switch Designs Coyote ski boot bag (\$239) solves both. Instead of a conventional shoulder strap or hand-carry, a magnetic buckle can convert the slim tote into a backpack—a boon when you're

jostling gear or other luggage. A semirigid foam liner adds comfort and prevents the bag from collapsing when you're loading it up. Made of durable nylon and Wyoming elk leather that's been tanned using traditional methods, no two look exactly alike.

THE COMPETITION

- Designed more with function than form in mind, Kulkea's nylon Thermal Trekker (\$240) has a handy plug-in feature that can heat up your boots in the car

before you get to the mountain.

- The Dakine boot locker (\$85) also can be a backpack and holds an impressive 4,270 cubic inches, or 70 liters, of storage. A tarp lining in the boot compartment gives you a spot to stand on to keep your feet clean and dry while changing.
- For a couple or family, the L.L.Bean extra-large Rolling Adventure duffel (\$189) can fit at least two sets of gear in its watertight main compartment.

THE CASE

Like most boot bags, the Coyote has separate sections for each boot so everything else stays dry. The roomy main compartment can hold a helmet, goggles, gloves, and both a puffy jacket and a shell with room to spare. Inside, two elastic pouches offer space for a 13-inch laptop and a stash of Clif bars. Grommets on the bottom of the side compartments provide drainage and air circulation—a big help if your boots are still wet. But the bag's best feature may be the magnetic buckle that allows it to easily convert from backpack to tote and back again. Storage is a cinch, too: The snazzy carryall tucks effortlessly into an overhead bin or the back of your closet at season's end. \$239; switchdesigns.com

63

Frank Frances

www.art-dept.com

Art Department

THE ONE

Bloomberg Pursuits

August 31, 2020

Barocko, the new high jewelry collection from Bulgari SpA, takes its name and inspiration from the Baroque sculptures and monuments of Rome, where the company was founded in 1884. The diamonds—there are 26 in different configurations across this pair of earrings—are framed by hexagons, a geometric shape found throughout the Eternal City's decorative motifs. And in a bold break from symmetry, one earring is made of rubies, the other of sapphires.

All Ears

A graphic update of the chandelier style pays glamorous tribute to Baroque Rome
Photograph by Frank Frances

THE COMPETITION

- A more delicate look comes in Van Cleef & Arpels's ombré \$127,000 Brume de saphir chandeliers. Four strands of diamonds and graded sapphires add up to 23 carats, bezel-set in white gold.
- In Pomellato's \$15,600 Sabbia earrings, disks of rose gold are covered in almost 4 carats of brown, white, and black diamonds.
- Vram's one-of-a-kind Chrona chandeliers (\$25,230) combine white diamonds, zircons in autumnal hues, and two Montana agates of more than 11 carats each into otherworldly shapes.



THE CASE

More than 13 carats of precious gems, selected by creative director Lucia Silvestri, make Bulgari's homage to Rome the showstopper you'd expect. But it's the refined way the design updates history that leaves a lasting impression. Striking use of color has been a defining Bulgari characteristic for several decades; here the use of different-colored gems for each earring creates a playful option in either formal or casual situations. With almost 5 carats of jawbone-grazing pear diamonds on the tassels, this bit of ear candy announces the presence of a sophisticated taste—and no small amount of chutzpah. Price on request; bulgari.com

67

Frank Frances

www.art-dept.com

Art Department



Frank Frances

www.art-dept.com

Art Department



Frank Frances

www.art-dept.com

Art Department



Frank Frances

www.art-dept.com

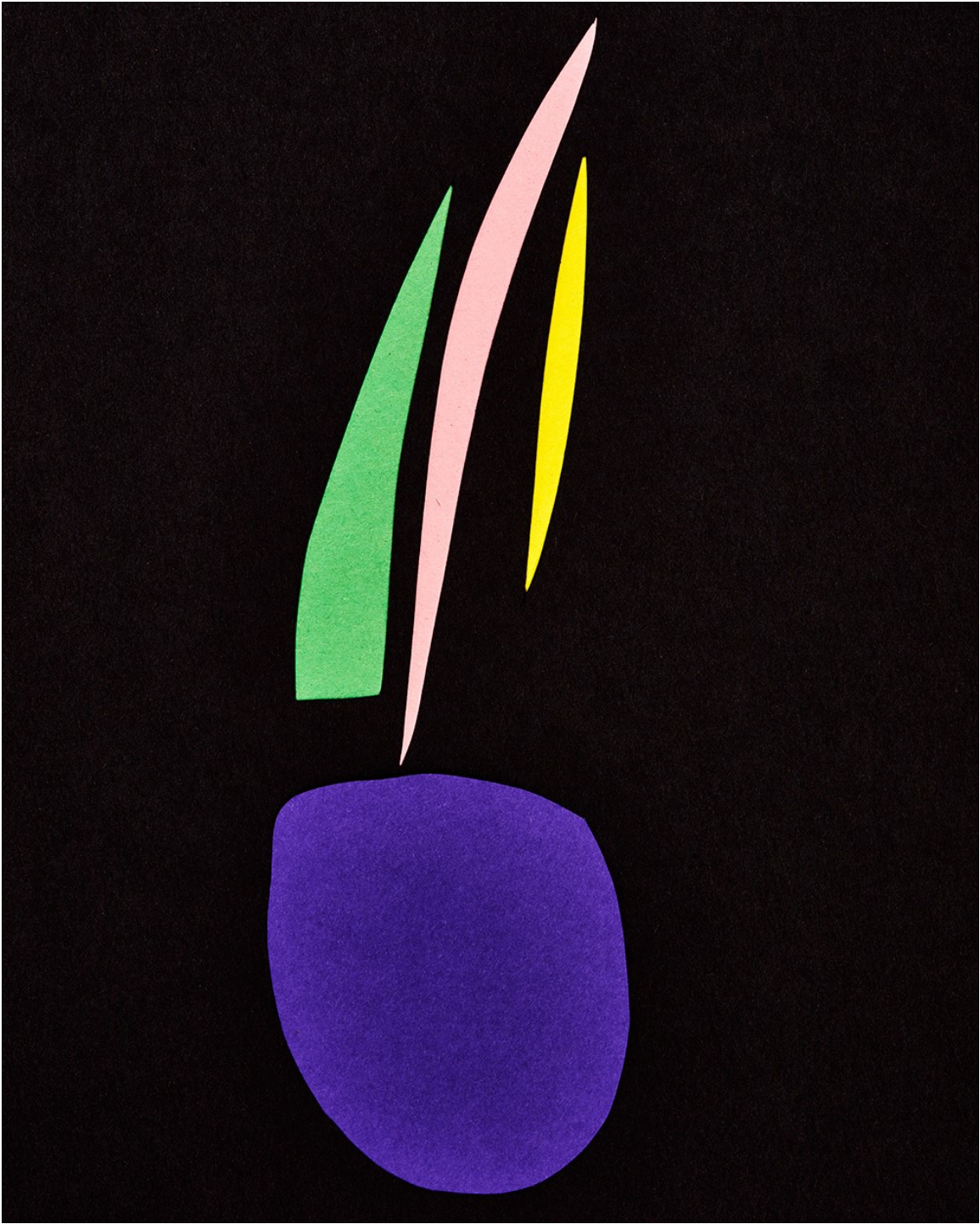
Art Department



Frank Frances

www.art-dept.com

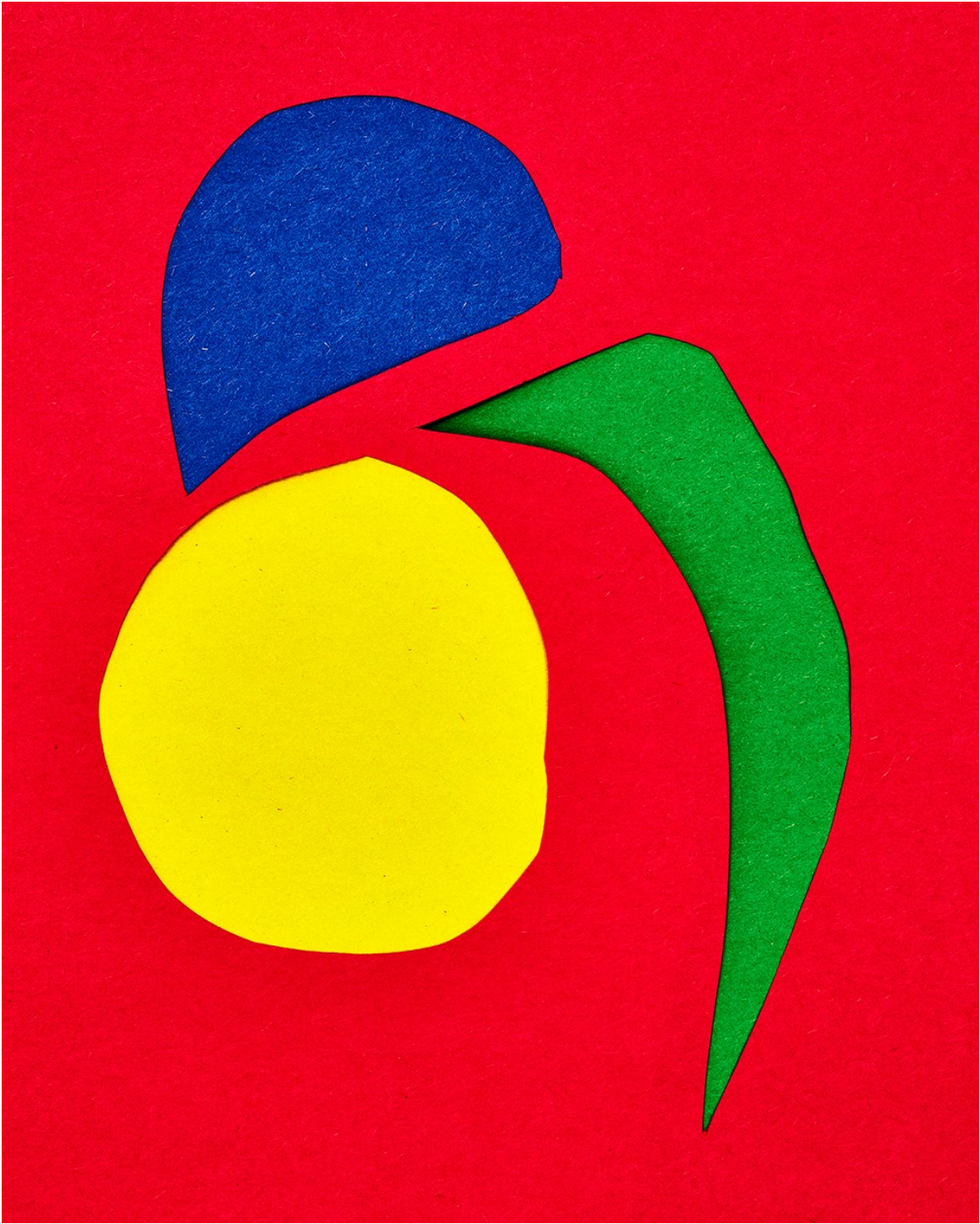
Art Department



Frank Frances

www.art-dept.com

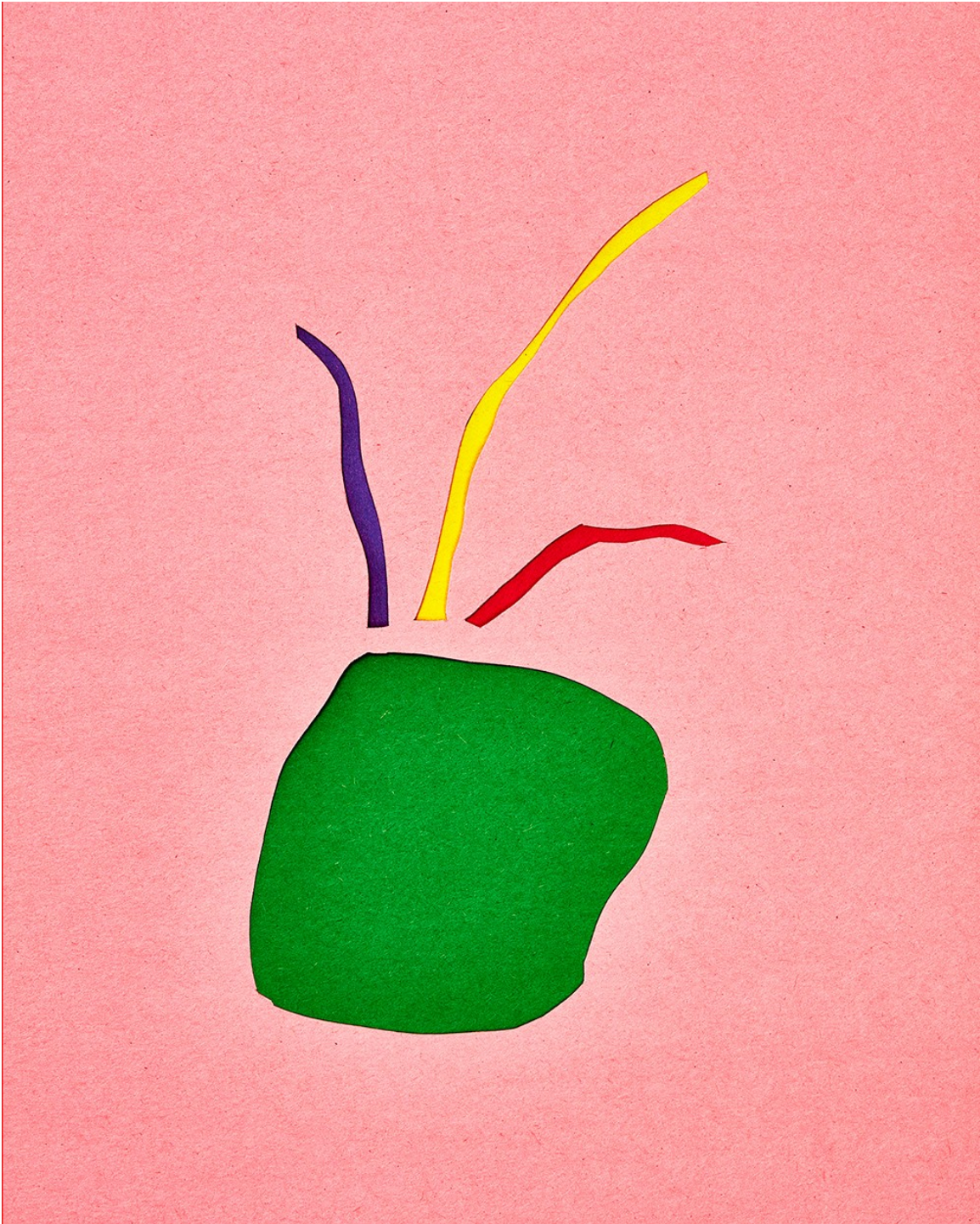
Art Department



Frank Frances

www.art-dept.com

Art Department



Frank Frances

www.art-dept.com

Art Department



Frank Frances

www.art-dept.com

Art Department

health



Sole Save

THE BODY PART GETTING THE LEAST LOVE AT HOME: YOUR FEET. LIFE IN LOCKDOWN TOOK A TOLL ON YOUR BASE, PODIATRISTS AGREE. WE'VE GOT SIMPLE, SOOTHING SOLUTIONS.

By Jacqueline Andriakos Photographed by Frank Frances

PROP STYLING: HEGUMI ENOTO FOR ANDERSON HOPKINS

OCTOBER 2020

WOMEN'S HEALTH / 51

Frank Frances

www.art-dept.com

Art Department



Frank Frances

www.art-dept.com

Art Department



Frank Frances

www.art-dept.com

Art Department



Frank Frances

www.art-dept.com

Art Department



Frank Frances

www.art-dept.com

Art Department



Frank Frances

www.art-dept.com

Art Department



Frank Frances

www.art-dept.com

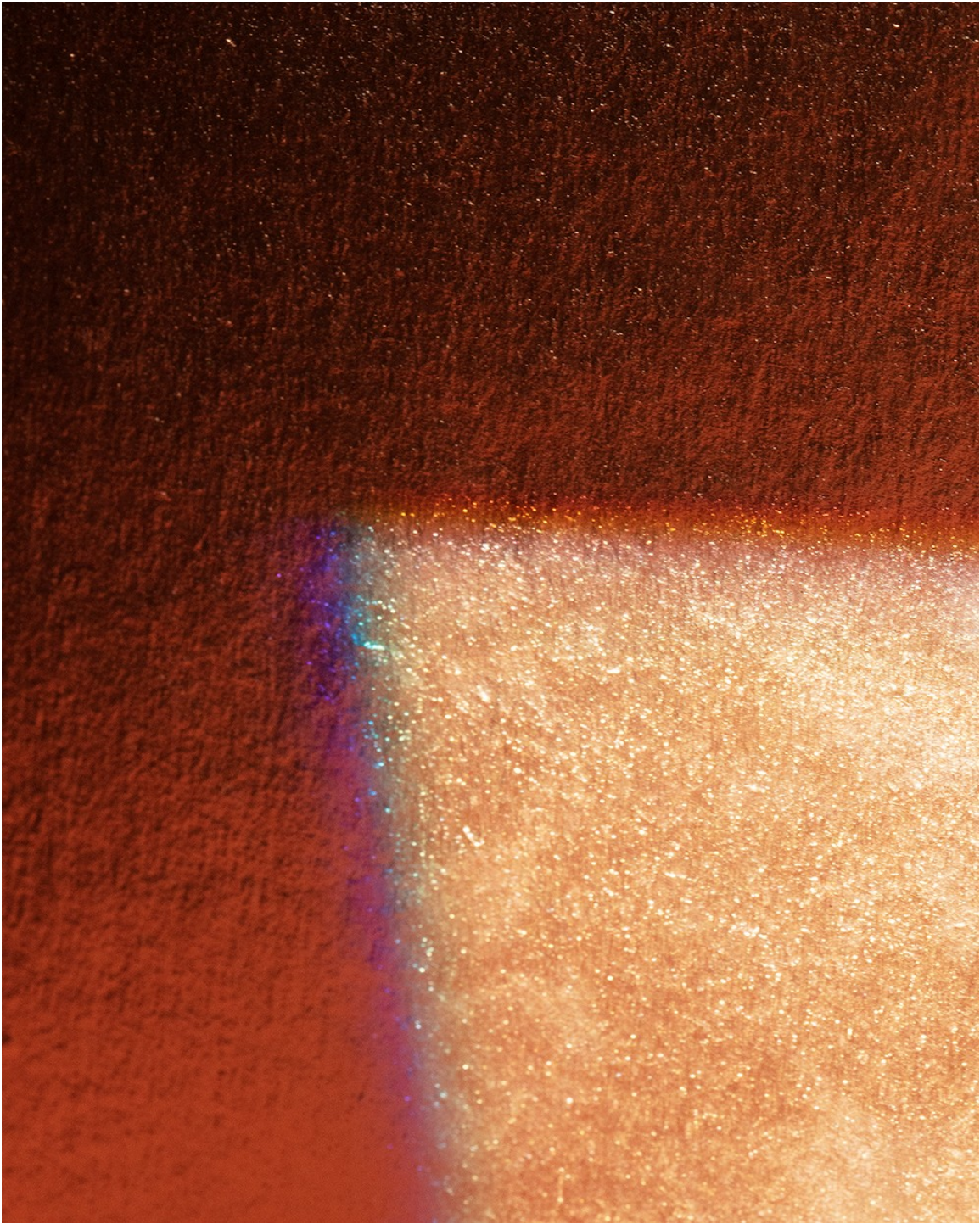
Art Department



Frank Frances

www.art-dept.com

Art Department



Frank Frances

www.art-dept.com