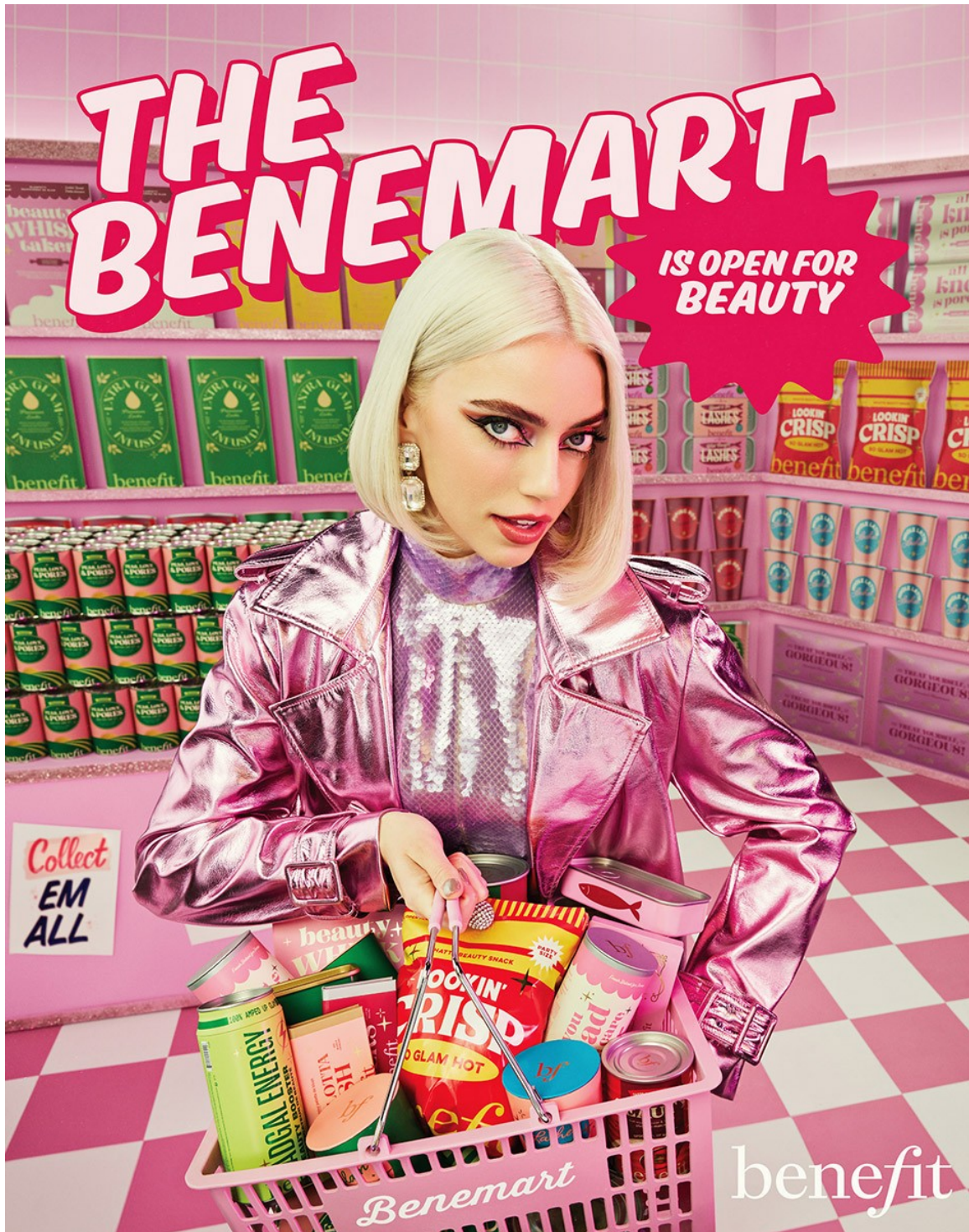


Art Department



Julia Johnson

www.art-dept.com

Art Department



Julia Johnson

www.art-dept.com

Art Department



Julia Johnson

www.art-dept.com

Art Department



Julia Johnson

www.art-dept.com

Art Department



Julia Johnson

www.art-dept.com

Art Department



Julia Johnson

www.art-dept.com

Art Department



Julia Johnson

www.art-dept.com

Art Department



Julia Johnson

www.art-dept.com

Art Department



Julia Johnson

www.art-dept.com

Art Department



Julia Johnson

www.art-dept.com

Art Department



Julia Johnson

www.art-dept.com

Art Department



benefit

NEW!

benefit

MAKE A SPLASH

MOST LIKELY TO MAKE A SPLASH

Meet Splashtint, a moisturizing dewy lip tint

The advertisement features a central photograph of a young woman with long, wavy, reddish-brown hair and bangs, smiling broadly. She is wearing a light blue varsity jacket with white stripes on the collar and a circular patch on the chest that says "MAKE A SPLASH". In the bottom left corner, there is a product shot of the "benefit Splashtint" lip tint, which is a white, rounded bottle with a red applicator. A pink starburst graphic with the word "NEW!" is positioned above the product. The background of the photo is a solid light blue color.

Julia Johnson

www.art-dept.com

Art Department



benefit

NEW!

PRESIDENT OF THE PLUSH CLUB
Meet Plushtint, a moisturizing matte lip tint

The advertisement features a woman with long, wavy red hair and blue eyes, wearing a pink and white striped collared shirt under a pink and white V-neck sweater with a large red letter 'P' on the chest. She is holding a Benefit Plushtint lip tint product, which is a white tube with a red applicator. A red starburst graphic with the word 'NEW!' is positioned next to the product. The background is a light blue sky.

Julia Johnson

www.art-dept.com

Art Department

TINTS: THE NEW CLASS
Moisturizing lip tints. Go dewy or get matte.

The advertisement features two models against a background of green school lockers. The model on the left is wearing a light blue varsity jacket with a large blue 'S' on the chest, a yellow 'SPLASH' patch, and a yellow horse patch on the sleeve. The model on the right is wearing a pink V-neck sweater with a large red 'P' on the chest, a tiger face patch, and a blue shield patch that says 'Plush Club'. In the bottom left corner, there is a red starburst graphic containing two Benefit lip tint tubes and a brush. The word 'benefit' is written in a black serif font in the bottom right corner of the image.

Julia Johnson

www.art-dept.com

Art Department



Julia Johnson

www.art-dept.com

Art Department



Julia Johnson

www.art-dept.com

Art Department



Julia Johnson

www.art-dept.com

Art Department



Julia Johnson

www.art-dept.com

Art Department



Julia Johnson

www.art-dept.com

Art Department



Julia Johnson

www.art-dept.com

Art Department



Julia Johnson

www.art-dept.com

Art Department

MOROCCANOIL.®

MOROCCANOIL.COM
Luxury Salons & Spas, Bluemercury, Nordstrom-Saks Fifth Avenue, Sephora

A WORLD OF OIL-INFUSED BEAUTY

MOROCCANOIL
MOROCCANOIL TREATMENT
NUTRIENT MOROCCANOIL
For Fine Hair
100% Pure Argan Oil
100% Pure Argan Oil
100% Pure Argan Oil

MOROCCANOIL
MOROCCANOIL TREATMENT
NUTRIENT MOROCCANOIL
For Fine Hair
100% Pure Argan Oil
100% Pure Argan Oil
100% Pure Argan Oil

MOROCCANOIL
MOROCCANOIL TREATMENT
NUTRIENT MOROCCANOIL
For Fine Hair
100% Pure Argan Oil
100% Pure Argan Oil
100% Pure Argan Oil

Julia Johnson

www.art-dept.com

Art Department



Julia Johnson

www.art-dept.com

Art Department



Julia Johnson

www.art-dept.com

Art Department



Julia Johnson

www.art-dept.com

Art Department



Fluff Yeah!

benefit
SAN FRANCISCO

benefit
FLUFF UP BROW WAX

GET FLUFFY,
FLEXIBLE BROWS

The advertisement features a close-up of a woman's face, her eyes looking slightly to the side with a soft smile. She is wearing a voluminous, bright pink feathered hood that frames her face. The background is a solid, vibrant pink. In the bottom right corner, two silver Benefit mascara tubes are shown: one standing upright and one lying horizontally with its wand resting against it. The overall aesthetic is playful and feminine.

Julia Johnson

www.art-dept.com

Art Department



Julia Johnson

www.art-dept.com

Art Department



Julia Johnson

www.art-dept.com

Art Department



Julia Johnson

www.art-dept.com

Art Department



Julia Johnson

www.art-dept.com

Art Department



Julia Johnson

www.art-dept.com

Art Department



Julia Johnson

www.art-dept.com

Art Department



Julia Johnson

www.art-dept.com

Art Department



Julia Johnson

www.art-dept.com

Art Department



Julia Johnson

www.art-dept.com

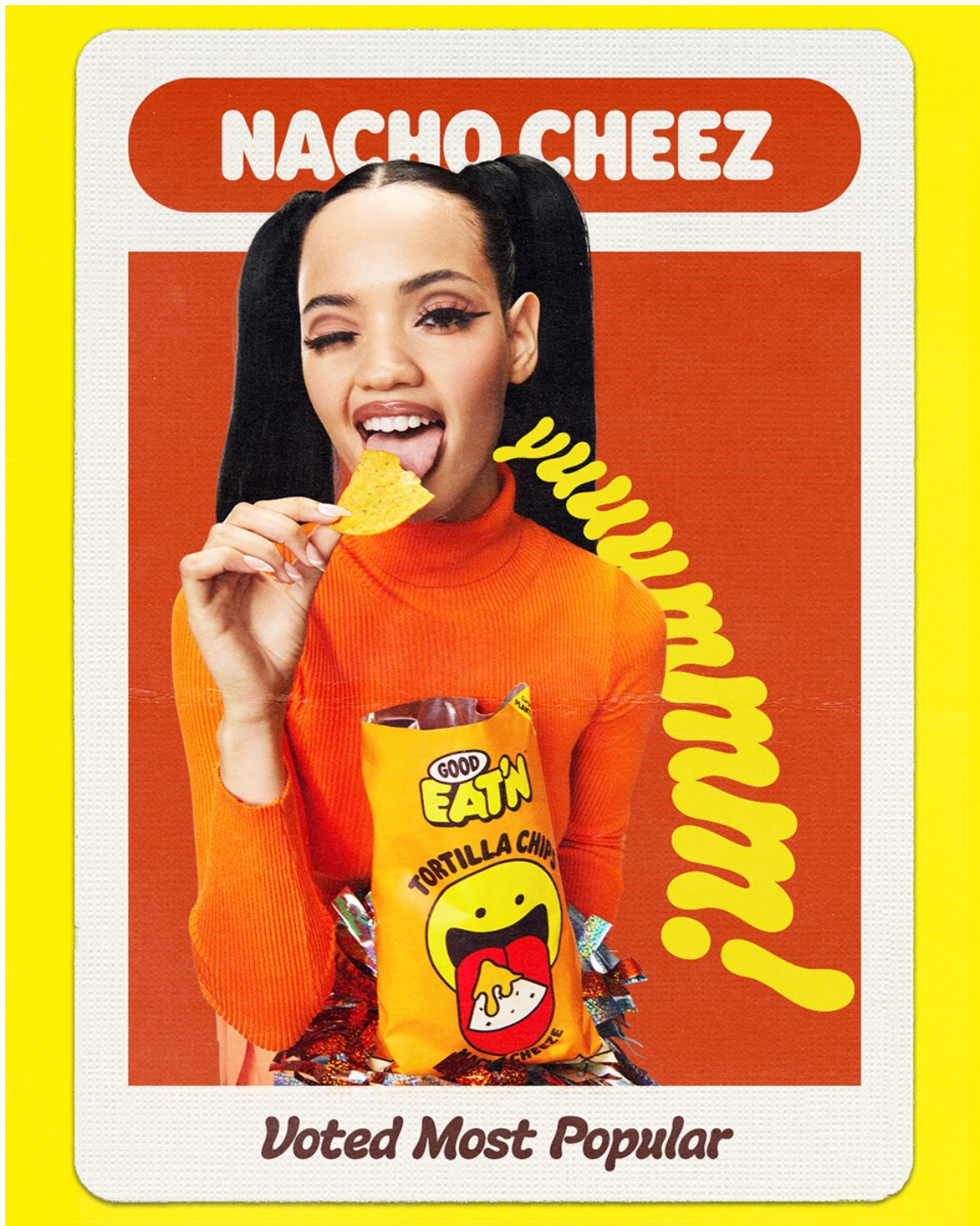
Art Department



Julia Johnson

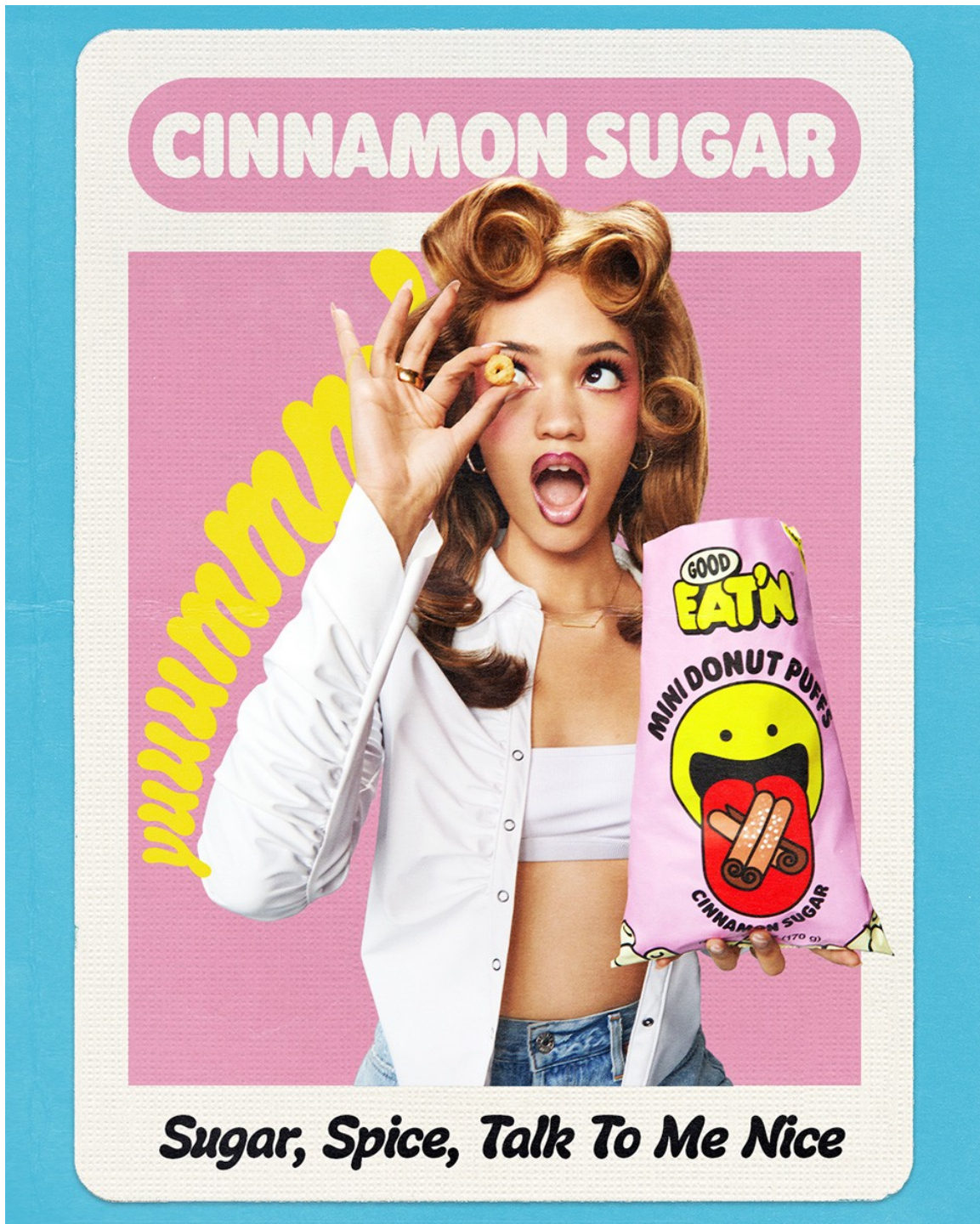
www.art-dept.com

Art Department



Julia Johnson

Art Department



Julia Johnson

Art Department



Julia Johnson

www.art-dept.com

Art Department



Julia Johnson

www.art-dept.com

Art Department

Apple tv+

MAYA RUDOLPH



Julia Johnson

www.art-dept.com

Art Department



Julia Johnson

www.art-dept.com

Art Department



Julia Johnson

www.art-dept.com

Art Department



Julia Johnson

www.art-dept.com

Art Department



Julia Johnson

www.art-dept.com

Art Department



Julia Johnson

www.art-dept.com

Art Department



Julia Johnson

www.art-dept.com

Art Department



Julia Johnson

www.art-dept.com

Art Department



Julia Johnson

www.art-dept.com

Art Department



Julia Johnson

www.art-dept.com

Art Department



Julia Johnson

www.art-dept.com

Art Department



Julia Johnson

www.art-dept.com

Art Department



Julia Johnson

www.art-dept.com

Art Department



Julia Johnson

www.art-dept.com

Art Department



Julia Johnson

www.art-dept.com

Art Department



Julia Johnson

www.art-dept.com

Art Department



Julia Johnson

www.art-dept.com

Art Department



Julia Johnson

www.art-dept.com

Art Department



Julia Johnson

www.art-dept.com

Art Department



Julia Johnson

www.art-dept.com

Art Department



Julia Johnson

www.art-dept.com

Art Department

motorola

Lenovo

snap a
360° camera
on your moto z2™

hello360°

Motomods™ sold separately. Motorola Mobility LLC, A Lenovo Company.

Julia Johnson

www.art-dept.com

Art Department



Julia Johnson

www.art-dept.com

Art Department



Julia Johnson

www.art-dept.com

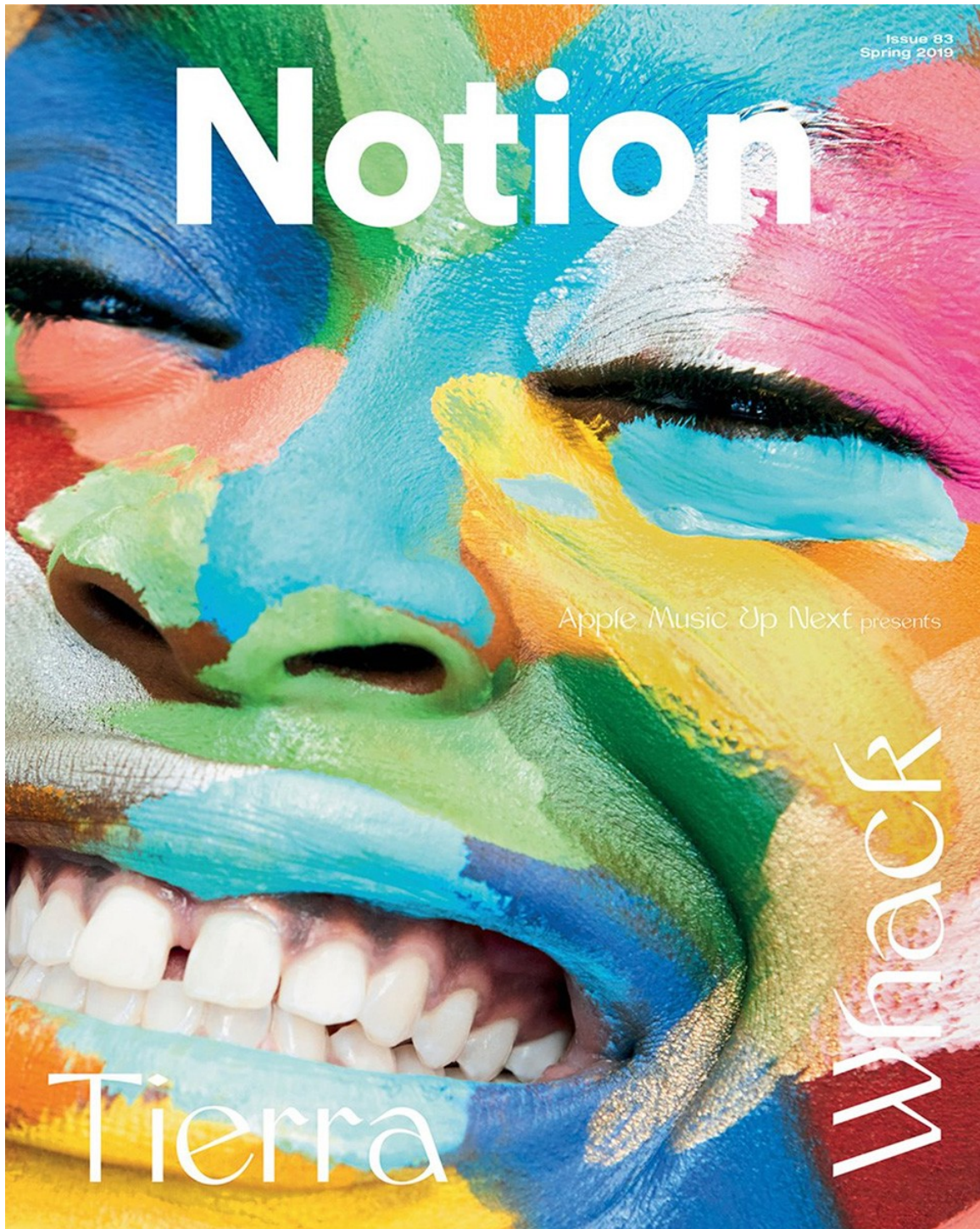
Art Department



Julia Johnson

www.art-dept.com

Art Department



Julia Johnson

www.art-dept.com


Art Department



Julia Johnson

www.art-dept.com

Art Department

 **motorola**

Lenovo.

snap a speaker
on your moto z2™

hellodisco

Moto Z2™ sold separately. Motorola Mobility LLC, a Lenovo Company.

Julia Johnson

www.art-dept.com

Art Department



Julia Johnson

www.art-dept.com

Art Department



Julia Johnson

www.art-dept.com

Art Department



Julia Johnson

www.art-dept.com

Art Department



Julia Johnson

www.art-dept.com

Art Department

motorola

Lenovo

snap a
gamepad
on your moto z2™

hellogamers

Motorola™ sold separately. Motorola Mobility LLC, A Lenovo Company

Julia Johnson

www.art-dept.com

Art Department

GODIVA *is* **CHOCOLATE**



GODIVA *is* CHOCOLATE



Julia Johnson

Art Department



Julia Johnson

www.art-dept.com

Art Department



Julia Johnson

www.art-dept.com

Art Department



Julia Johnson

www.art-dept.com

Art Department



#NailChamp

Julia Johnson

www.art-dept.com

Art Department



Julia Johnson

www.art-dept.com

Art Department



Julia Johnson

www.art-dept.com

Art Department



Julia Johnson

www.art-dept.com

Art Department



Julia Johnson

www.art-dept.com

Art Department



Julia Johnson

www.art-dept.com

Art Department



Julia Johnson

www.art-dept.com

Art Department



Julia Johnson

www.art-dept.com

Art Department



© 2019 Health-Ade, LLC

HEALTH-ADE
KOMBUCHA

BIG MOOD.
SMALL BATCH.

FOLLOW YOUR GUT. [@healthade](https://www.instagram.com/healthade)

HEALTH-ADE
KOMBUCHA
a bubbly probiotic tea
GINGER-LEMON
BOTTLED & PACKED IN THE USA

Julia Johnson

www.art-dept.com

Art Department



Julia Johnson

www.art-dept.com

Art Department



Julia Johnson

www.art-dept.com

Art Department



Julia Johnson

www.art-dept.com

Art Department



SUMMER 2019
smagazineofficial.com

GIVE INTO SUMMER

INDULGENT TIMEPIECES
ADORNED HAIR
NEW STYLE RULES

ACROSS THE GLOBE

WOMEN IN DESIGN
MAGIC OF
MEXICO CITY
MODEST FASHION
REBORN

SHAILENE WOODLEY

A SIGHT TO BEHOLD

Julia Johnson

www.art-dept.com

Art Department



Julia Johnson

www.art-dept.com

Art Department



Julia Johnson

www.art-dept.com

Art Department



Julia Johnson

www.art-dept.com

Art Department



Julia Johnson

www.art-dept.com

Art Department



Julia Johnson

www.art-dept.com

Art Department



Julia Johnson

www.art-dept.com

Art Department



Julia Johnson

www.art-dept.com

Art Department



Julia Johnson

www.art-dept.com

Art Department



Julia Johnson

www.art-dept.com

Art Department



Julia Johnson

www.art-dept.com

Art Department



Julia Johnson

www.art-dept.com

Art Department



Julia Johnson

www.art-dept.com

Art Department



Julia Johnson

www.art-dept.com

Art Department



Julia Johnson

www.art-dept.com

Art Department



Julia Johnson

www.art-dept.com