

# Art Department



INTRODUCING  
**REVITALIFT®**  
**DERM INTENSIVES**

OUR MOST POWERFUL  
SKINCARE FORMULAS.



#### BUILT ON DECADES OF L'ORÉAL RESEARCH

Revitalift Derm Intensive Products were validated in partnership with an advisory panel of dermatologists who performed a:

- THOROUGH REVIEW OF INDEPENDENT CLINICAL TESTING PROTOCOLS AND RESULTS
- COMPREHENSIVE SCREENING OF INGREDIENTS TO UPHOLD STRICT FORMULATION STANDARDS



TESTED ON EVERY SKIN TYPE, EVEN SENSITIVE

L'ORÉAL  
PARIS

Kenji Aoki

[www.art-dept.com](http://www.art-dept.com)

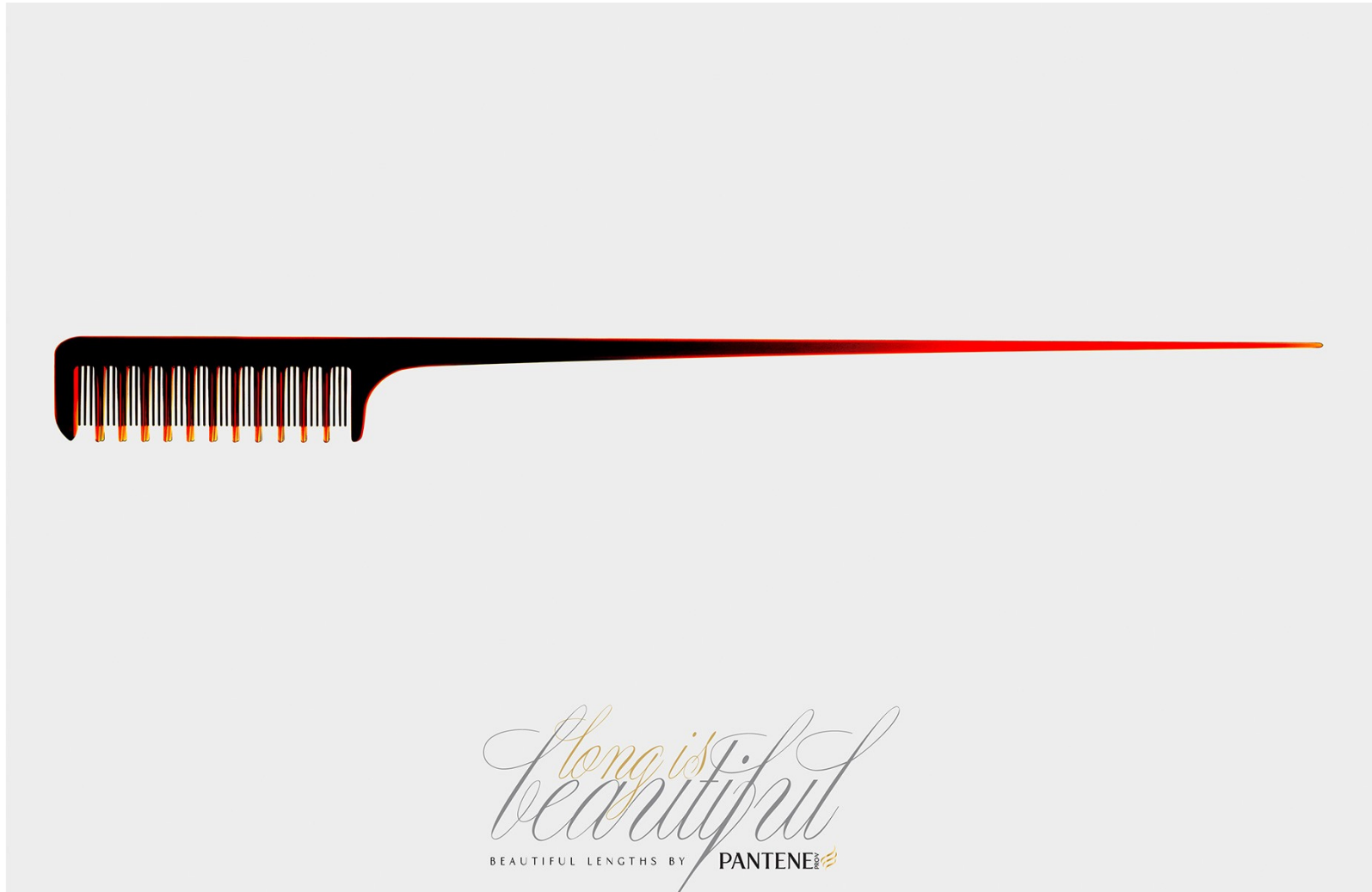
# Art Department



Kenji Aoki

[www.art-dept.com](http://www.art-dept.com)

# Art Department



Kenji Aoki

[www.art-dept.com](http://www.art-dept.com)

# Art Department



Kenji Aoki

[www.art-dept.com](http://www.art-dept.com)

# Art Department



Kenji Aoki

[www.art-dept.com](http://www.art-dept.com)

# Art Department



Kenji Aoki

[www.art-dept.com](http://www.art-dept.com)

# Art Department



Kenji Aoki

[www.art-dept.com](http://www.art-dept.com)

# Art Department



Kenji Aoki

[www.art-dept.com](http://www.art-dept.com)



# Art Department



Kenji Aoki

[www.art-dept.com](http://www.art-dept.com)

# Art Department



*Cartier*

Kenji Aoki

[www.art-dept.com](http://www.art-dept.com)

# Art Department

GREATNESS, BY DESIGN.  
LIVE FOR GREATNESS

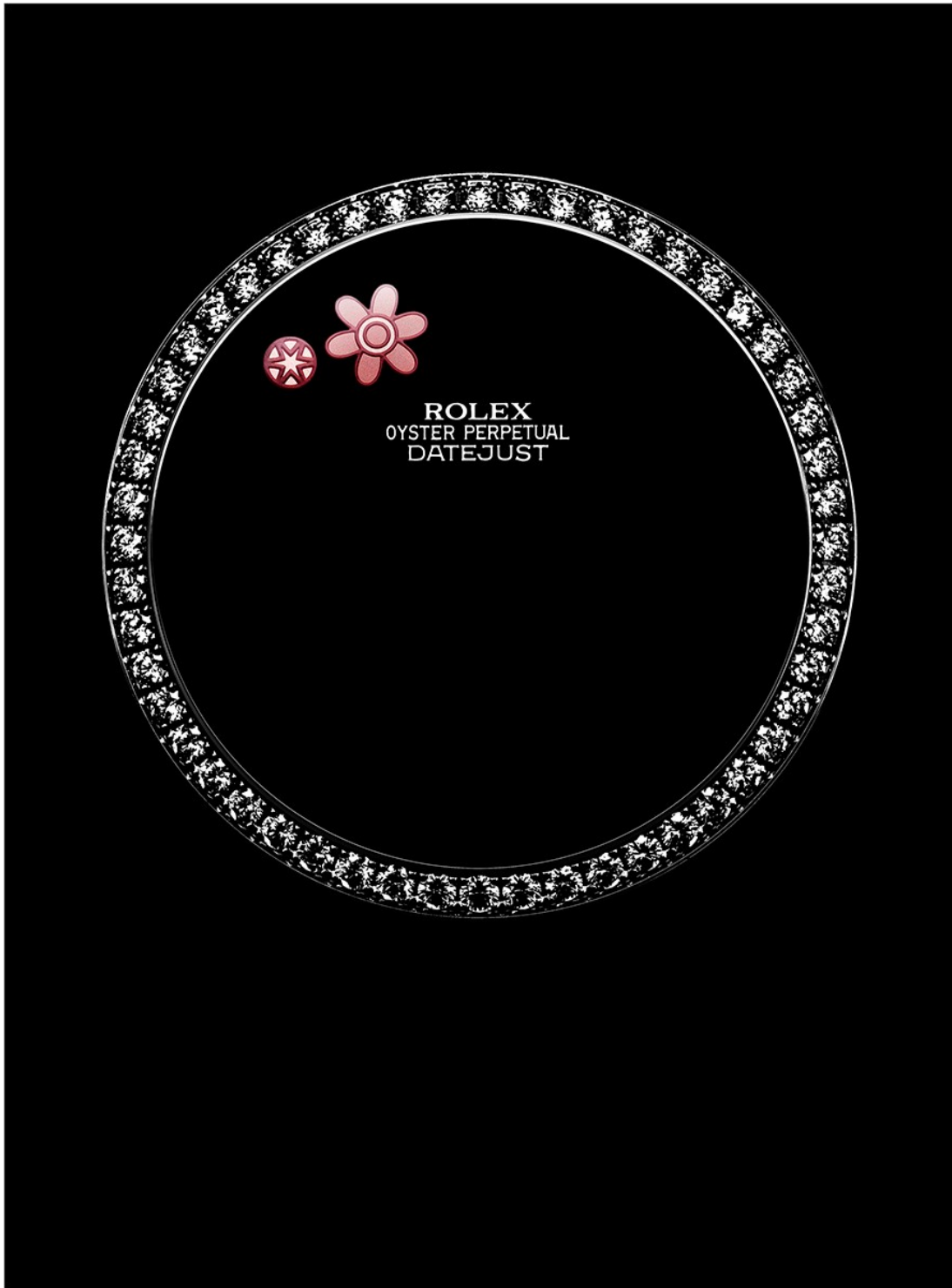


  
ROLEX

Kenji Aoki

[www.art-dept.com](http://www.art-dept.com)

# Art Department



Kenji Aoki

[www.art-dept.com](http://www.art-dept.com)

# Art Department



Kenji Aoki

[www.art-dept.com](http://www.art-dept.com)

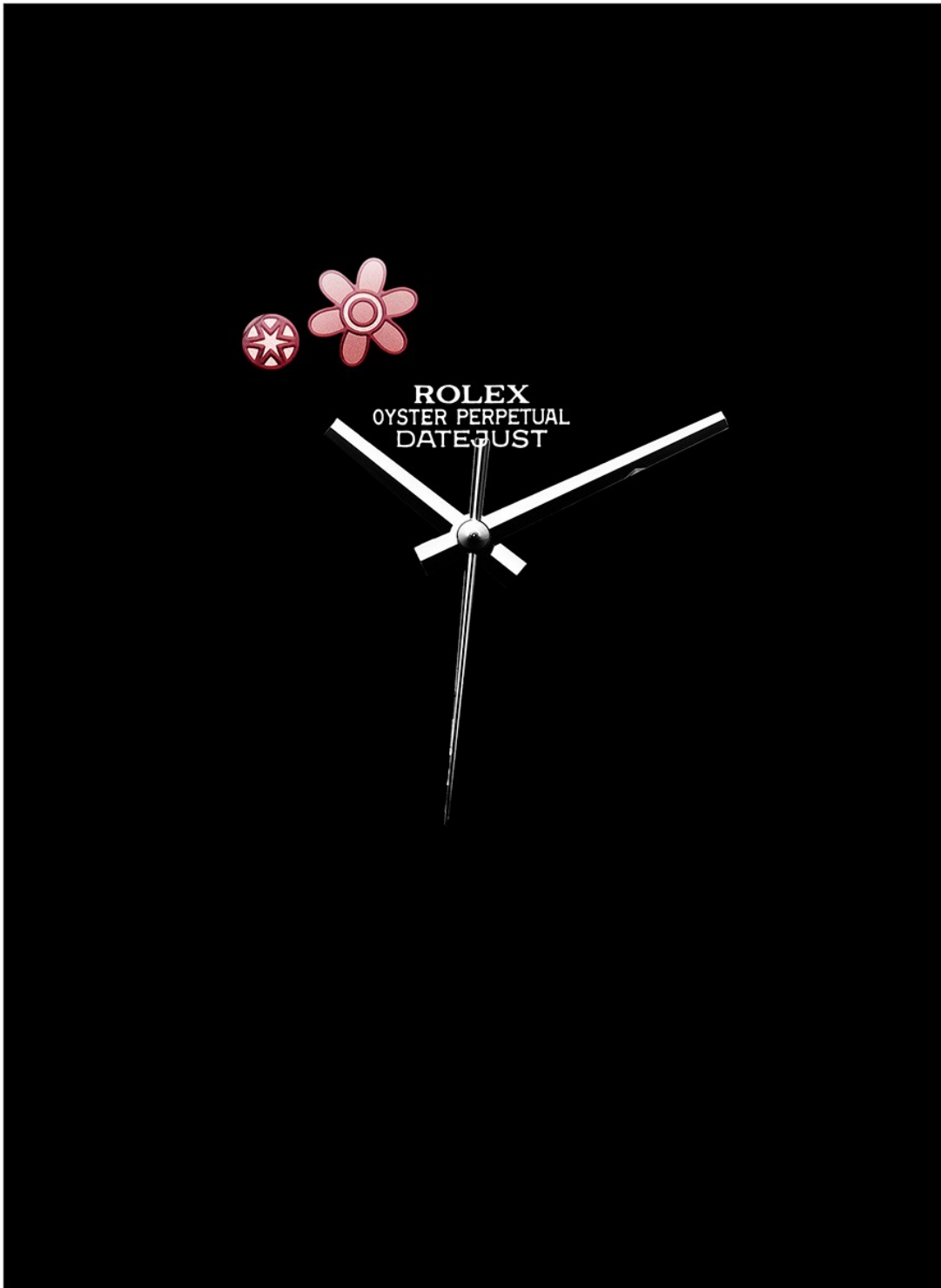
# Art Department



Kenji Aoki

[www.art-dept.com](http://www.art-dept.com)

# Art Department



Kenji Aoki

[www.art-dept.com](http://www.art-dept.com)

# Art Department



*Cartier*

Kenji Aoki

[www.art-dept.com](http://www.art-dept.com)



# Art Department



*Cartier*

Kenji Aoki

[www.art-dept.com](http://www.art-dept.com)

# Art Department



*Cartier*

Kenji Aoki

[www.art-dept.com](http://www.art-dept.com)

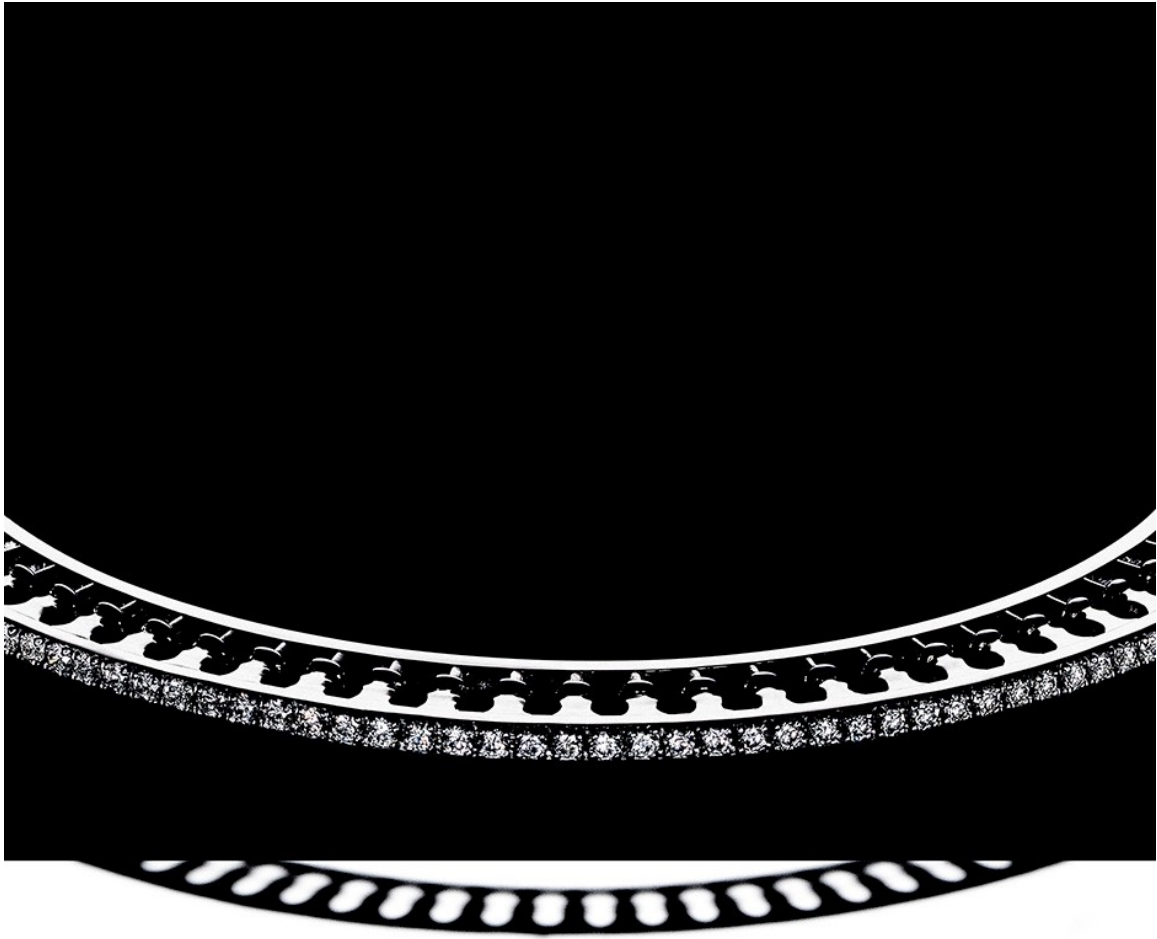
# Art Department



Kenji Aoki

[www.art-dept.com](http://www.art-dept.com)

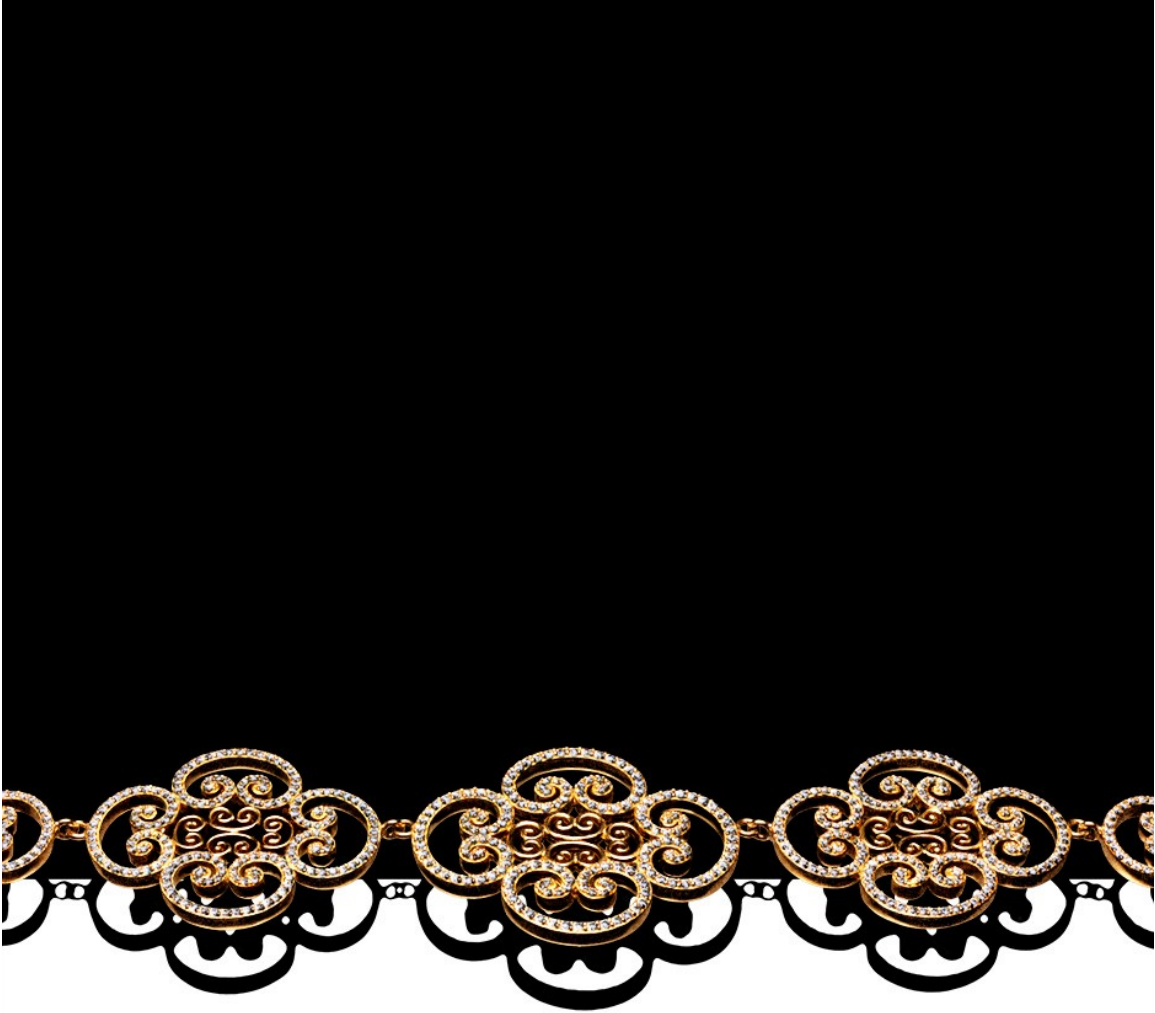
# Art Department



Kenji Aoki

[www.art-dept.com](http://www.art-dept.com)

# Art Department



Kenji Aoki

[www.art-dept.com](http://www.art-dept.com)

# Art Department



Kenji Aoki

[www.art-dept.com](http://www.art-dept.com)

# Art Department



Kenji Aoki

[www.art-dept.com](http://www.art-dept.com)

# Art Department



Kenji Aoki

[www.art-dept.com](http://www.art-dept.com)



# Art Department



Kenji Aoki

[www.art-dept.com](http://www.art-dept.com)

# Art Department



Kenji Aoki

[www.art-dept.com](http://www.art-dept.com)

# Art Department



Kenji Aoki

[www.art-dept.com](http://www.art-dept.com)

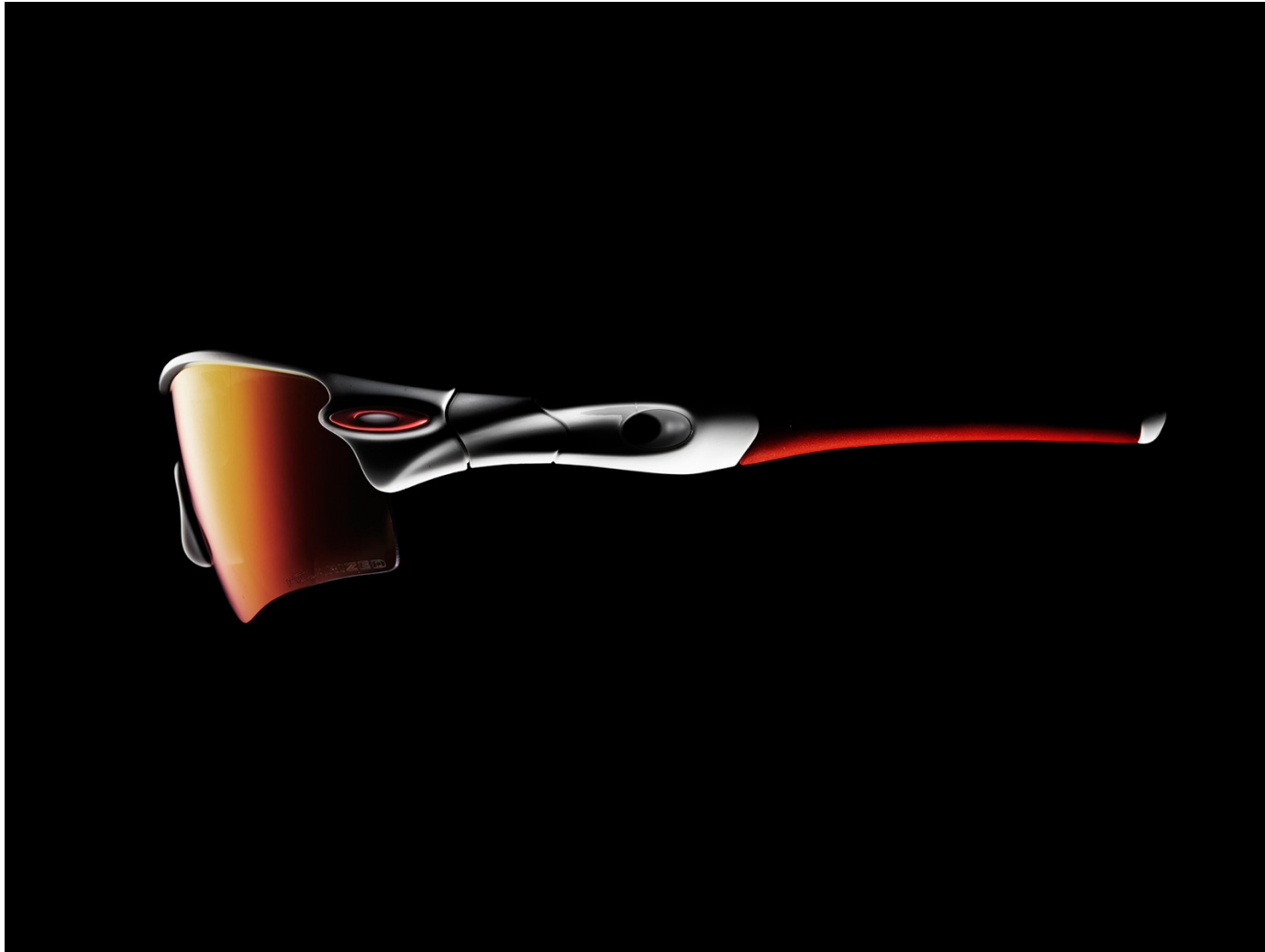
# Art Department



Kenji Aoki

[www.art-dept.com](http://www.art-dept.com)

# Art Department



Kenji Aoki

[www.art-dept.com](http://www.art-dept.com)

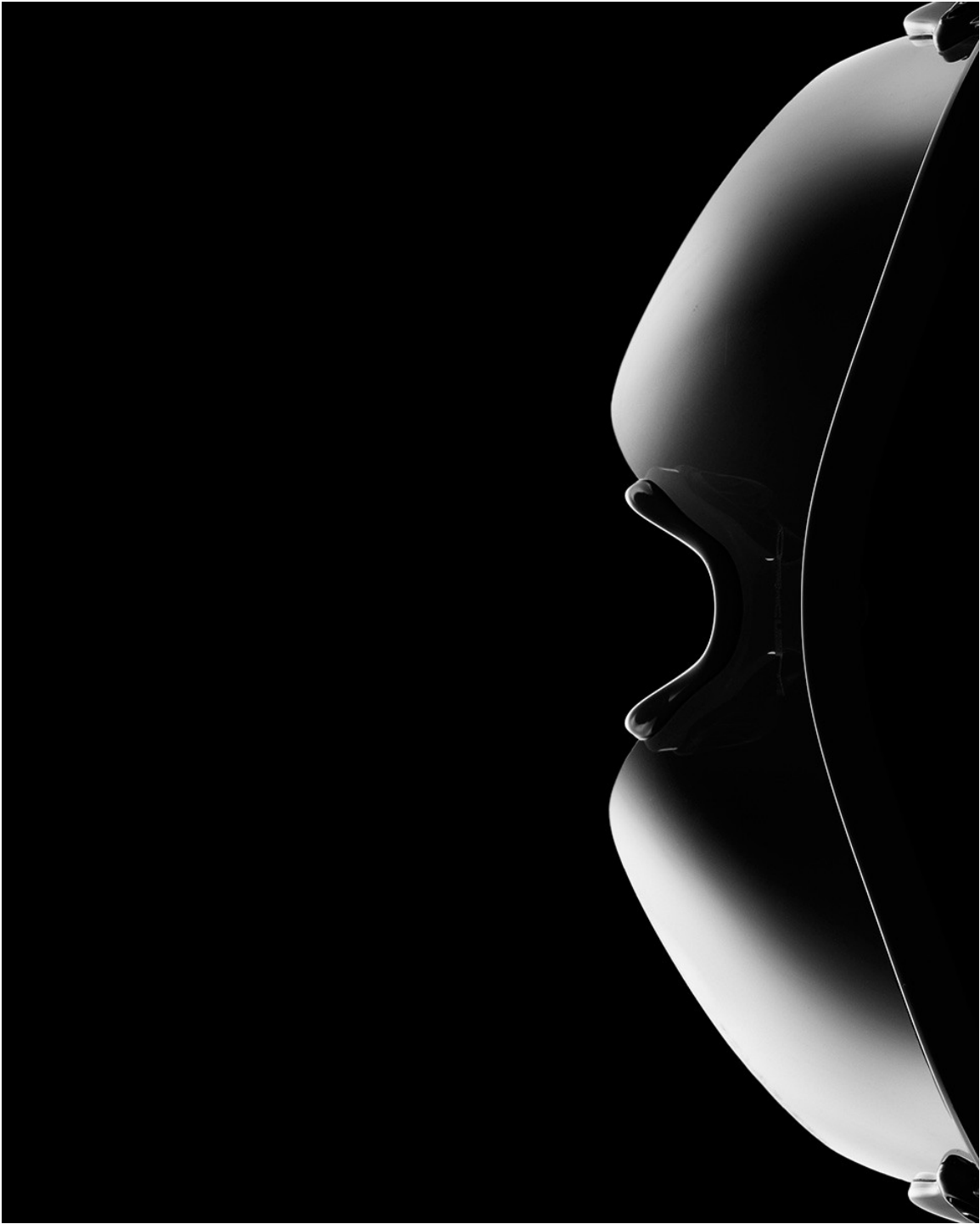
# Art Department



Kenji Aoki

[www.art-dept.com](http://www.art-dept.com)

# Art Department



Kenji Aoki

[www.art-dept.com](http://www.art-dept.com)

# Art Department



Kenji Aoki

[www.art-dept.com](http://www.art-dept.com)



# Art Department



Kenji Aoki

[www.art-dept.com](http://www.art-dept.com)

# Art Department



Kenji Aoki

[www.art-dept.com](http://www.art-dept.com)

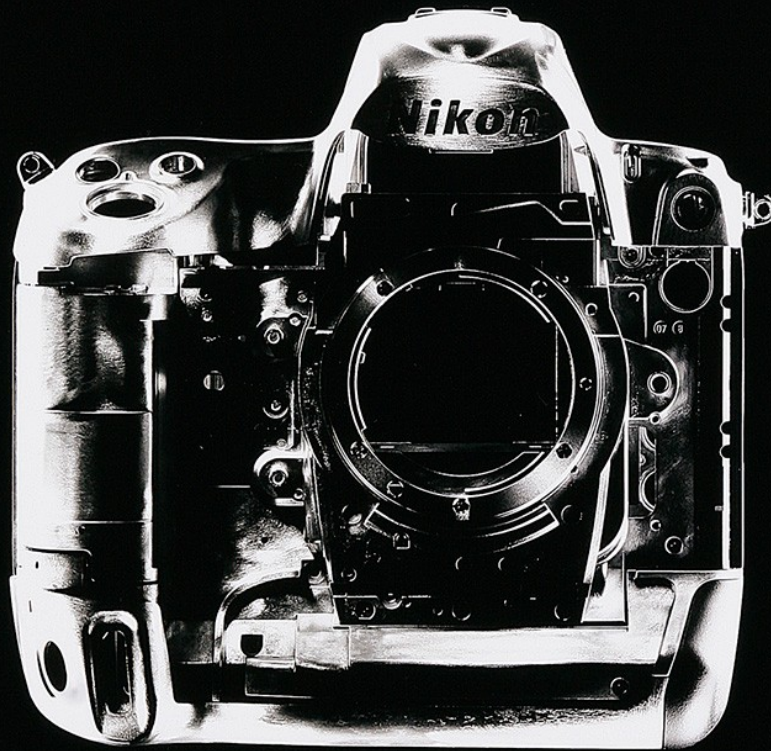
# Art Department



Kenji Aoki

[www.art-dept.com](http://www.art-dept.com)

# Art Department



## COMPREHENSIVE PROTECTION

Spectacular images can be found far beyond the controlled confines of the studio. Unlike less robust 36x24mm D-SLRs or more cumbersome medium-format equipment, the D3X was designed to be at home both on the set and on location. Its performance-tested body is similar to the world-renowned D3, which has proven that it can withstand the worst of what the world's leading news photographers can throw at it. Wherever you are, the D3X delivers studio-quality images in an agile body that can withstand the elements.

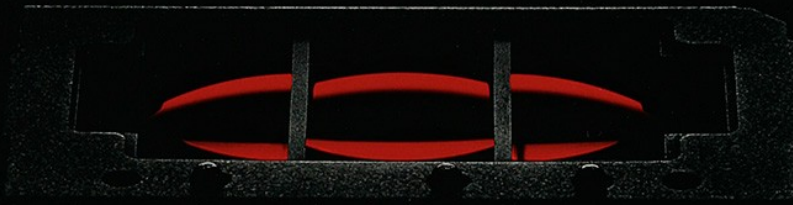
- Rugged magnesium alloy construction
- Comprehensive protection against moisture, dust and even electromagnetic interference
- A shutter unit tested inside the camera to exceed 300,000 cycles
- A self-diagnostic shutter monitor for more consistent and assured performance accuracy

24

## Kenji Aoki

[www.art-dept.com](http://www.art-dept.com)

# Art Department



## RAPID RESPONSE

Not every subject poses for the camera. Whether it's on the catwalk, in the studio or roaming in the wild, photographers must capture their subject beautifully and accurately. With its 51 individually selectable AF points, the D3X autofocus system is the same as the acclaimed Nikon D3, which has become the preferred choice of so many of the world's leading sports and news photographers by delivering tack-sharp images, even when shooting moving, low-contrast or poorly lit subjects.

- 51 AF points to track and capture both moving and stationary subjects
- 15 cross-type AF sensors that work with any NIKKOR lens f/5.6 or faster
- Versatile AF-area modes: Single-point AF, Dynamic-area AF, and Auto-area AF

22

## Kenji Aoki

[www.art-dept.com](http://www.art-dept.com)

# Art Department



**CREATIVE FREEDOM**

Whether it's the world-renowned NIKKOR lenses or the industry-leading Speedlight system, shooting with a D3X opens the door to a range of creative opportunities that only Nikon can offer. The Nikon Total Imaging System, backed up by the Nikon Professional Services (NPS)\* network is there to help you realize your vision, or even stimulate new ones.

- Compatible with the extensive NIKKOR lens range, including fisheye, ultra-wide angle, zoom, telephoto, super-telephoto, micro and PC lenses
- Nano-crystal coating on NIKKOR lenses for spectacular clarity, as well as minimized ghost and flare effects during harsh lighting
- NIKKOR Vibration Reduction to effectively compensate for blur caused by camera shake
- The industry-leading Nikon Creative Lighting System, including portable and versatile Nikon Speedlights
- Wireless Transmission, GPS input, HDMI output interfaces
- A comprehensive suite of workflow software to manage, edit, control and authenticate your important files


\*These services are for NPS members.

25

Kenji Aoki

[www.art-dept.com](http://www.art-dept.com)

# Art Department



**THE ART OF ERGONOMICS**

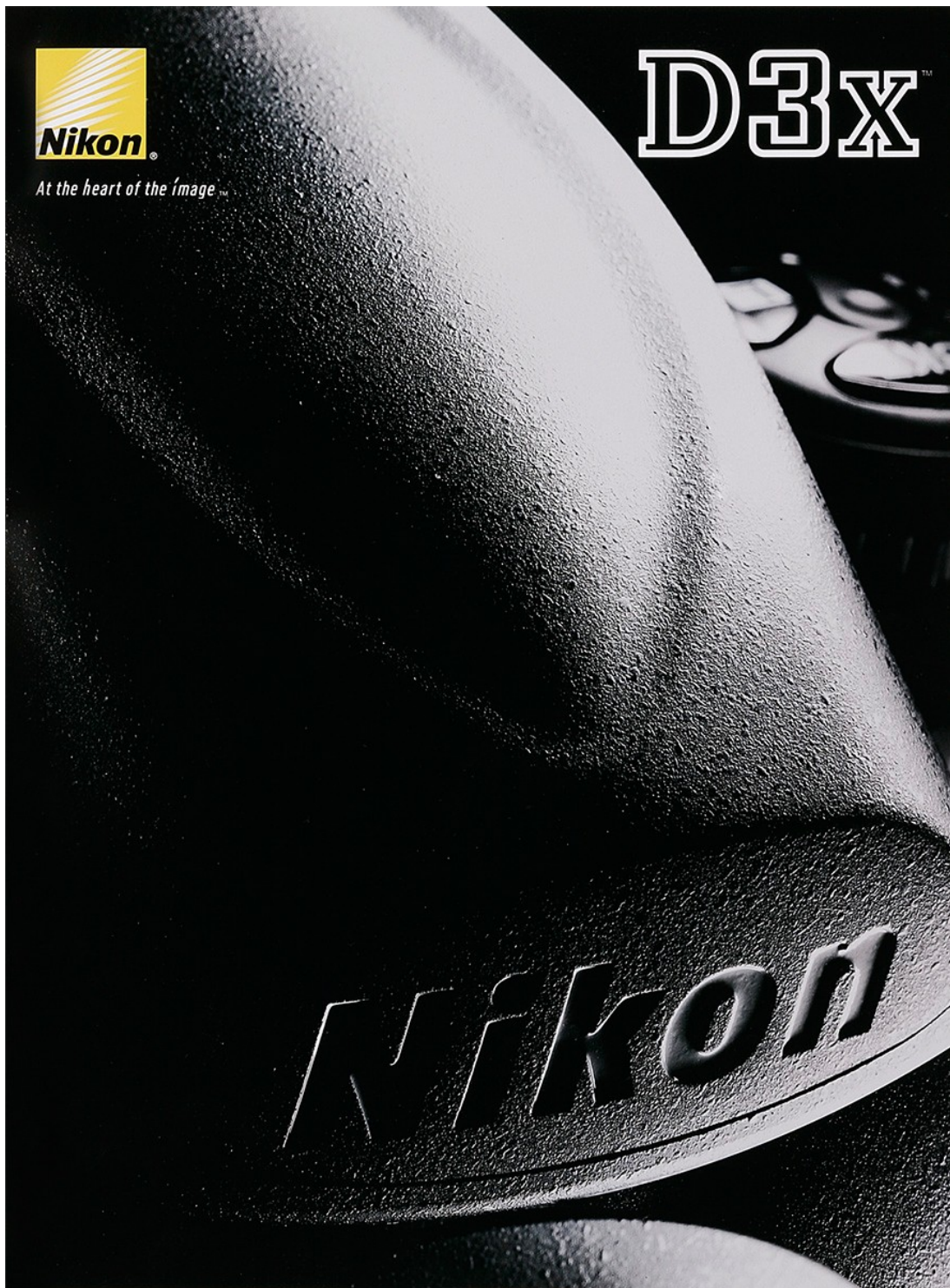
The logic is simple: a camera that functions naturally in your hands allows creative work to flow. The D3X features Nikon's world-renowned ergonomics, placement of controls and intuitive menu systems to help you follow your instincts instead of interrupting your flow to adjust settings or scroll through menus. Every texture and control has been meticulously designed to maintain your momentum and remain comfortable in your hands for as long as it takes to complete the assignment.

23

Kenji Aoki

[www.art-dept.com](http://www.art-dept.com)

# Art Department

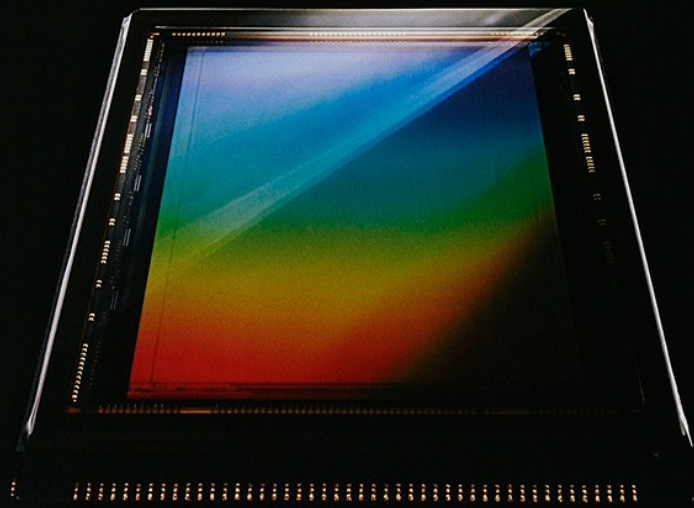


Kenji Aoki

[www.art-dept.com](http://www.art-dept.com)



# Art Department



## EXQUISITE DETAILS

The sensor's 24.5 megapixels are only the beginning. No matter how you shoot – tightly controlled or on the fly – the camera's phenomenally wide dynamic range retains subtlety of shadow and highlight detail that contributes to breathtaking image fidelity, which can make the difference between good pictures and exceptional ones.

- Fast 14-bit A/D conversion incorporated onto the image sensor for high signal-to-noise ratio and low power consumption
- 24.5 megapixels, each pixel specially designed to carry larger electrical charges for outstanding light transmission properties, delivering a wider dynamic range
- Exclusive low-pass filter with multi-layer coating for pristine resolution and minimized moiré

20

# Kenji Aoki

[www.art-dept.com](http://www.art-dept.com)

# Art Department



## IMAGES WITH THE X-FACTOR

Images with the X-factor are what your clients expect and your reputation deserves. Nikon's EXPPEED processing system is much more than a mere label or processing chip component. The EXPPEED at work in the D3X is designed specifically to meet the requirements of a 24.5-megapixel sensor. The results will exceed the expectations of any photographer whose work requires extreme resolution, rich tonal gradation, outstanding color accuracy and remarkable detail. Commercial and fine art photographers will immediately see that the D3X cuts no corners.

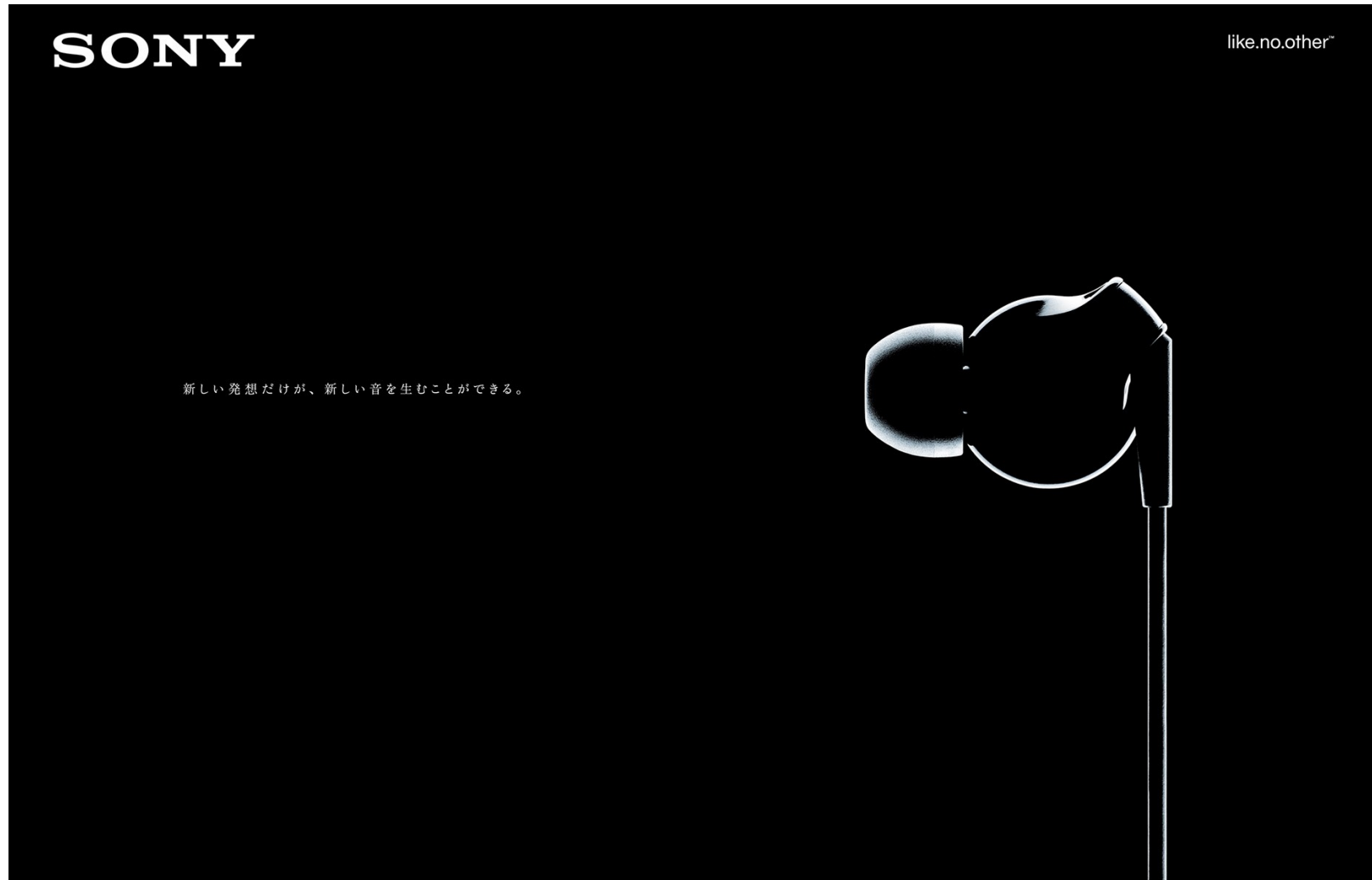
- Nikon's EXPPEED image processing system, utilizing a supremely powerful CPU with 16-bit image processing
- Faithful, pleasingly saturated color throughout the palette, with smooth tonal gradations, even in highlights
- Fast and efficient processing speed

21

## Kenji Aoki

[www.art-dept.com](http://www.art-dept.com)

# Art Department



Kenji Aoki

[www.art-dept.com](http://www.art-dept.com)

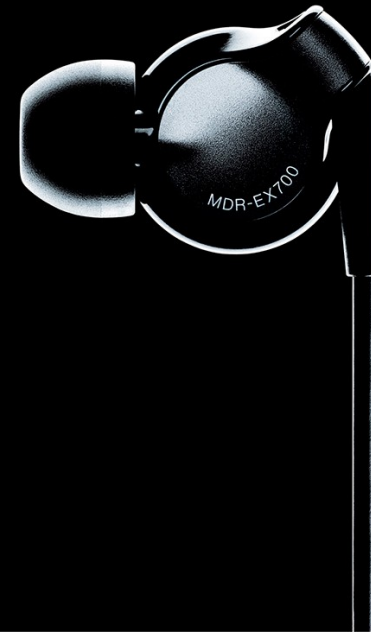
# Art Department

SONY

like.no.other™

世界初\*大口径 16mm  
ドライバーユニット採用ヘッドホン  
MDR-EX700SL

16mm。それは、新しい高音質を追求するためには必要な大きさだった。しかしそれは同時に、密閉型インナーイヤータイプとしては規格外の大きさでもあった。装着性を高めるのは困難と言われるなか、高音質と装着感の両立のための試行錯誤が始まった。そして完成したのが、ドライバーユニットを耳にたいして垂直に配置する新構造。すべてのパーツがいちから検証され、マグネシウム筐体と一体化した、まったく新しいドライバー。そして、さらなるフィット感のために開発された、7種のサイズのイヤーピース。誰もやっていないことを。それが、ソニーのいつものルール。常識を覆すことで、はじめて鳴り響いた、純粋な音がある。



※密閉型インナーイヤーヘッドホン MDR-EX700SL 希望小売価格 ¥6,750円（税別価格 ¥6,000円）  
\*密閉型インナーイヤーヘッドホンとして（2007年9月発表）以来、自動車に搭載されているような大口径ヘッドホンは数社しか開発していません。  
また音量を上げすぎて、周囲の方の迷惑にならないようご注意ください。◎商品をお取りいただく際、説明書に必ず「取扱説明書」をよくお読みください。◎「like.no.other（新しい音があなた）」はソニー株式会社の商標です。  
商品の取り扱い方法、詳しい情報などは、ソニーお客様相談センター（受付時間）0120-99-3311 携帯電話・PHS 一部01P電話料金 03-5448-3311 受付時間 月～金 9:00～20:00 土・日・祝日 9:00～17:00

Webで、あの頃の音体験を。 >>> [sony.co.jp/headphone](http://sony.co.jp/headphone)

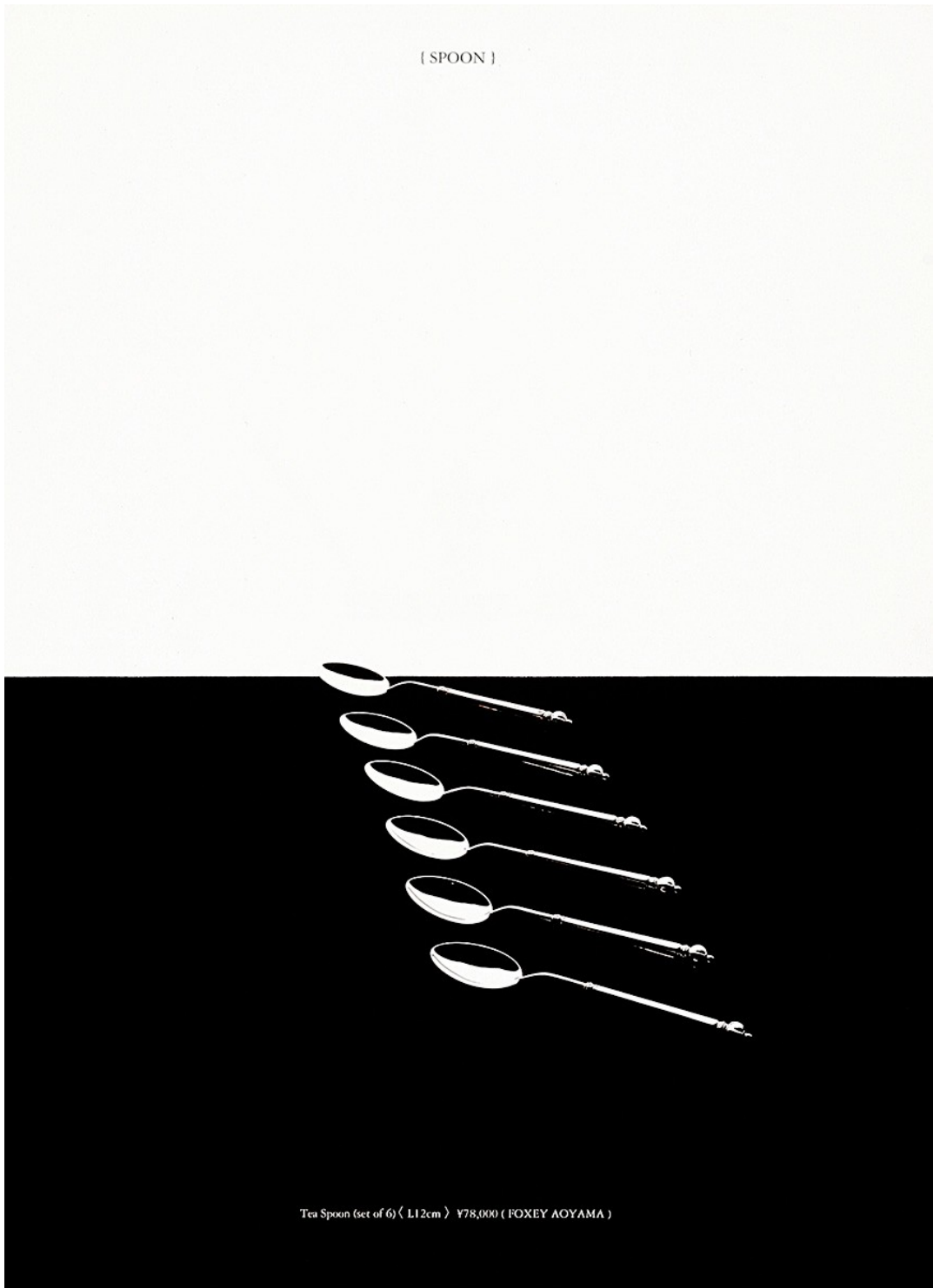
いい音の先に、もっといい音。  
Sound History

## Kenji Aoki

[www.art-dept.com](http://www.art-dept.com)

# Art Department

[ SPOON ]



Tea Spoon (set of 6) < L12cm > ¥78,000 ( FOXEY AOYAMA )

Kenji Aoki

[www.art-dept.com](http://www.art-dept.com)

# Art Department

[ KNIFE ]



Wedding Knife ( L25.5cm ) ¥36,000 (each) ( FOXEY AOYAMA )

69

Kenji Aoki

[www.art-dept.com](http://www.art-dept.com)

# Art Department

[ TEA STRAINER ]



Tea Strainer ( L15.5 x W9 x H3.5cm ) ¥120,000 ( FOXEY AOYAMA )

71

## Kenji Aoki

[www.art-dept.com](http://www.art-dept.com)

# Art Department

{ TRAY & POT }



Silver Tray & 3Pot Set (Tray / L12.5 × W23cm, Pot / Dia5 × H7.5cm) ¥34,000 (FOXKEY AOYAMA)

## Kenji Aoki

[www.art-dept.com](http://www.art-dept.com)



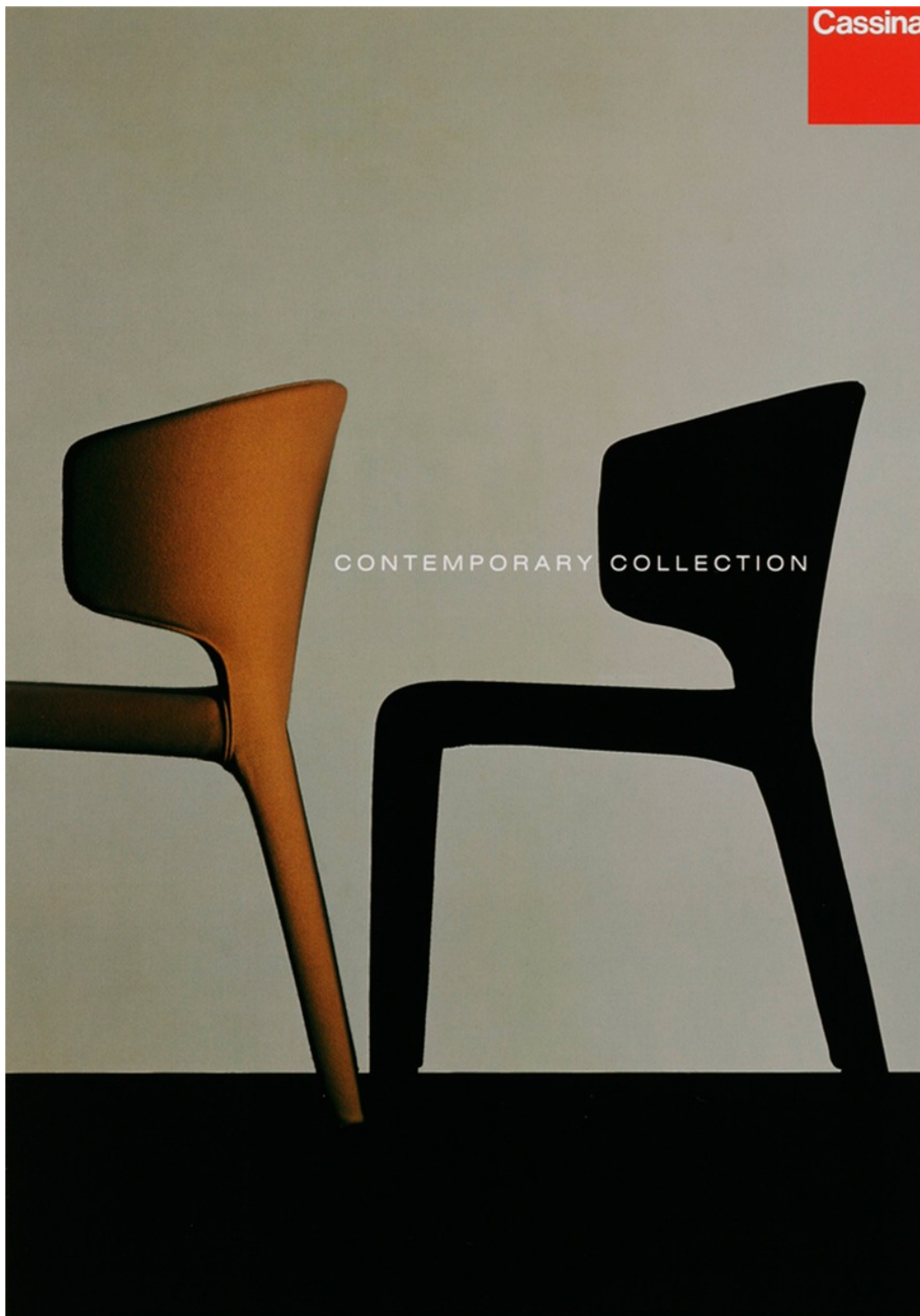
# Art Department



Kenji Aoki

[www.art-dept.com](http://www.art-dept.com)

# Art Department



Kenji Aoki

[www.art-dept.com](http://www.art-dept.com)

# Art Department

*The light and shadow collection*

A work of **Persol**



*persol.com*

*Clip-on sunglasses*

## Kenji Aoki

[www.art-dept.com](http://www.art-dept.com)

# Art Department

# NEVER HIDE

LIGHTER.

& THINNER.

& STRONGER.

TAKE THAT PHYSICS.



INTRODUCING LIGHT RAY,  
A NEW MATERIAL FOR YOUR RX LENSES.



## Kenji Aoki

[www.art-dept.com](http://www.art-dept.com)

# Art Department



Kenji Aoki

[www.art-dept.com](http://www.art-dept.com)

# Art Department



Kenji Aoki

[www.art-dept.com](http://www.art-dept.com)

# Art Department



Kenji Aoki

[www.art-dept.com](http://www.art-dept.com)

# Art Department



Kenji Aoki

[www.art-dept.com](http://www.art-dept.com)



# Art Department



Kenji Aoki

[www.art-dept.com](http://www.art-dept.com)

# Art Department



Kenji Aoki

[www.art-dept.com](http://www.art-dept.com)

# Art Department



ONLY ON **verizon**

**ENDURANCE  
WHEN IT  
MATTERS.**



**DROID MAXX**  
BY MOTOROLA

The image is a black and white advertisement for the Motorola Droid Maxx smartphone. The phone is shown vertically on the right side, with its screen displaying a battery icon and '100%'. The background is black. The Verizon logo is in the top left, and the Motorola Droid Maxx logo is in the bottom left. The main text 'ENDURANCE WHEN IT MATTERS.' is in large, bold, white capital letters.

Kenji Aoki

[www.art-dept.com](http://www.art-dept.com)

# Art Department

ONLY ON **verizon**

**DETAIL  
WHEN IT  
MATTERS.**

**DROID ULTRA**  
BY MOTOROLA

Kenji Aoki

[www.art-dept.com](http://www.art-dept.com)

# Art Department

ONLY ON **verizon**

**STRONG  
WHEN IT  
MATTERS.**

**DROID MAXX**  
BY MOTOROLA

Kenji Aoki

[www.art-dept.com](http://www.art-dept.com)

# Art Department

ONLY ON  **verizon**




**INTELLIGENT  
WHEN IT  
MATTERS.**

**DROID MINI**  
BY MOTOROLA

Kenji Aoki

[www.art-dept.com](http://www.art-dept.com)

# Art Department




The power to do more

Work  
Beautifully

INTRODUCING VOSTRO V130

The ideal partnership of form and function. To help you walk the walk, talk the talk, and look the look.

Why work any other way?

A black Dell Vostro V130 laptop is shown from a side profile, with the screen tilted at a steep angle. The laptop is set against a solid black background, which makes the metallic and dark tones of the device stand out. The lighting highlights the texture of the keyboard and the sleek lines of the laptop's body.

Kenji Aoki

[www.art-dept.com](http://www.art-dept.com)

# Art Department

A black and white advertisement for the Dell V130 laptop. The background is solid black. In the top left corner is the Dell logo (a circle with 'DELL' inside) and the tagline 'The power to do more' below it. In the center, there is a section titled 'LUXURY SEATING' in all caps, followed by a paragraph of text. At the bottom, a Dell V130 laptop is shown in a vertical orientation, with the screen folded up and the keyboard area visible at the base. The laptop is illuminated from the side, creating a subtle glow and highlighting its thin profile.

**DELL**  
The power to do more

**LUXURY SEATING**  
Are you sitting comfortably? The V130 has a unique cooling system that stops the processor and exterior casing from heating up, meaning less work for the fan. Keeping your lap cool, and your mind focused.

Kenji Aoki

[www.art-dept.com](http://www.art-dept.com)



# Art Department



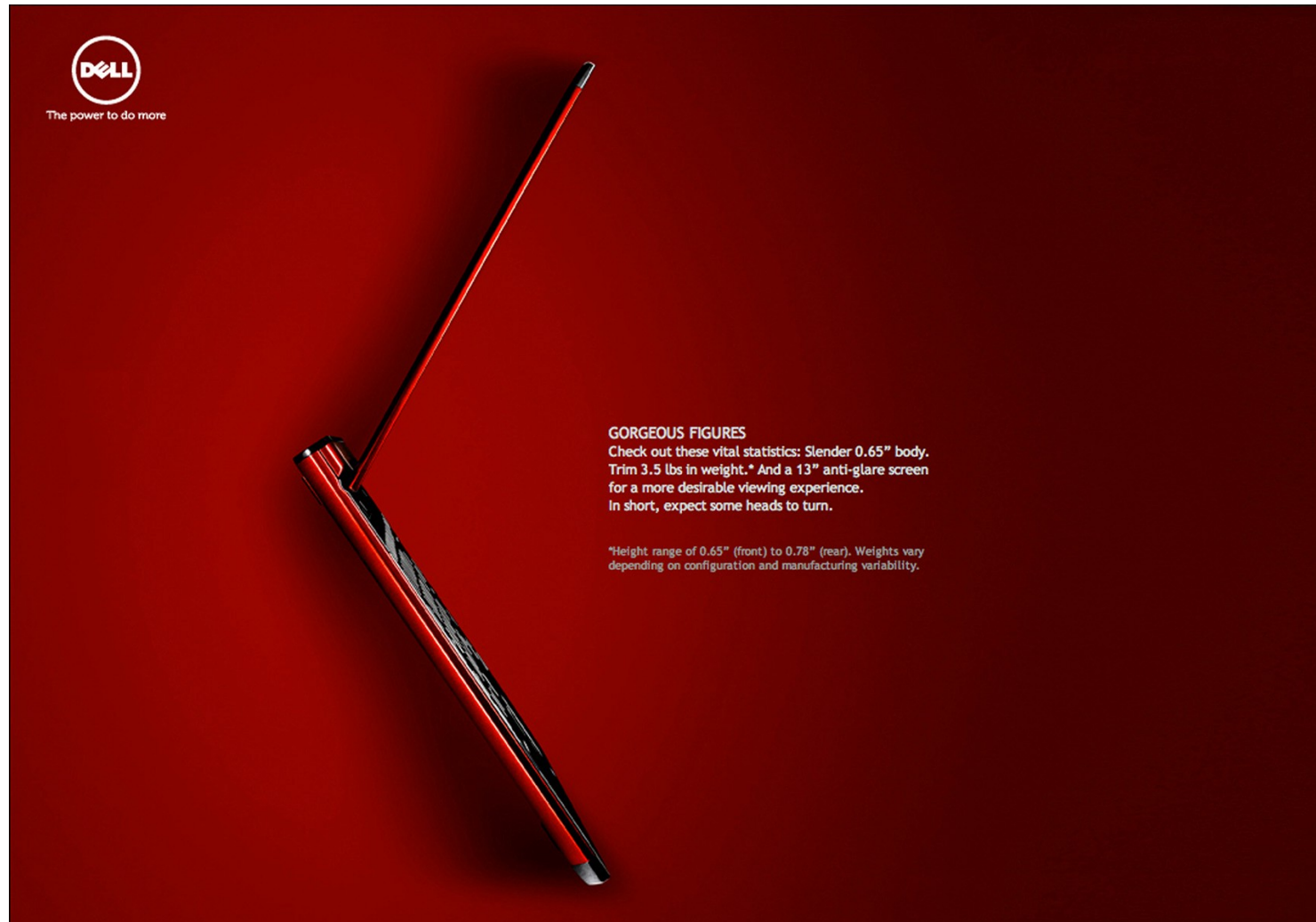
  
The power to do more

**POSTURE PERFECT**  
Save the heavy lifting for the gym. This machine is as thin and light as a glossy magazine - but with a hard cover. Because a confident, upright posture speaks volumes.

Kenji Aoki

[www.art-dept.com](http://www.art-dept.com)

# Art Department



**DELL**  
The power to do more

**GORGEOUS FIGURES**  
Check out these vital statistics: Slender 0.65" body. Trim 3.5 lbs in weight.\* And a 13" anti-glare screen for a more desirable viewing experience. In short, expect some heads to turn.

\*Height range of 0.65" (front) to 0.78" (rear). Weights vary depending on configuration and manufacturing variability.

Kenji Aoki

[www.art-dept.com](http://www.art-dept.com)