

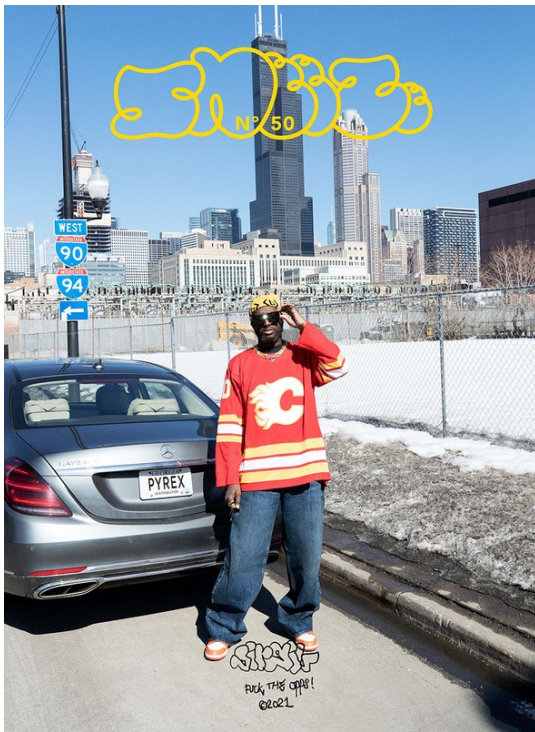
Art Department



Kenneth Cappello

www.art-dept.com

Art Department



Kenneth Cappello

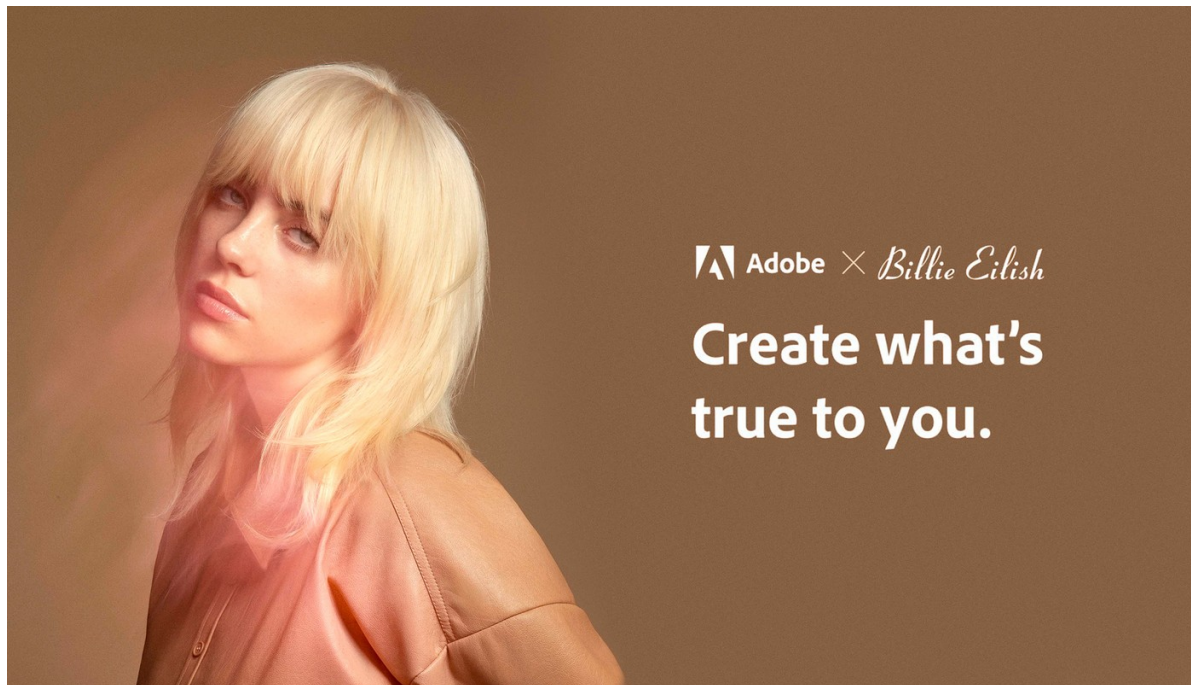
www.art-dept.com

Art Department



Kenneth Cappello

Art Department



Kenneth Cappello

www.art-dept.com

Art Department



Kenneth Cappello

www.art-dept.com

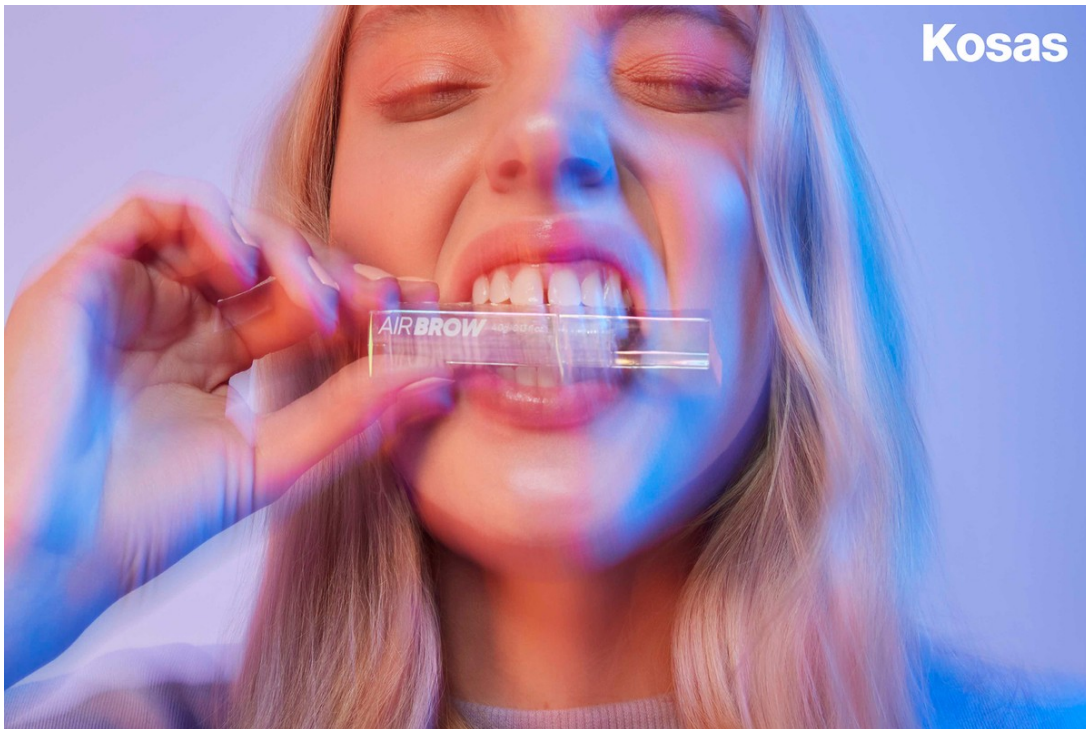
Art Department



Kenneth Cappello

www.art-dept.com

Art Department



Kenneth Cappello

www.art-dept.com

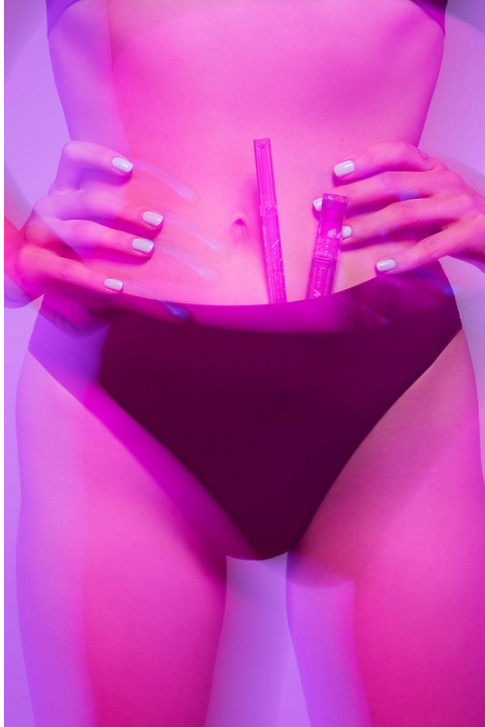
Art Department



Kenneth Cappello

www.art-dept.com

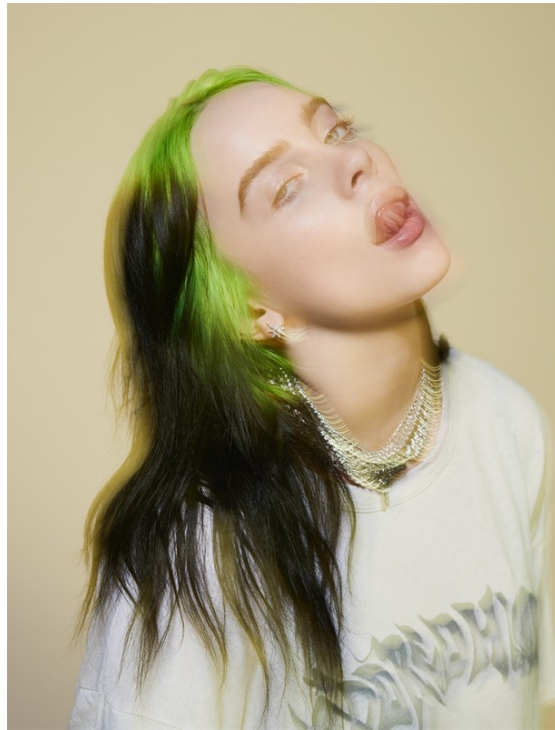
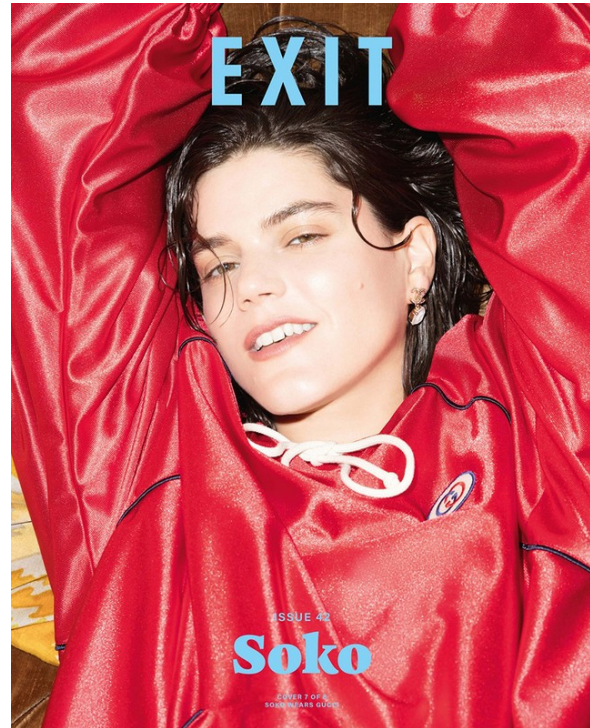
Art Department



Kenneth Cappello

www.art-dept.com

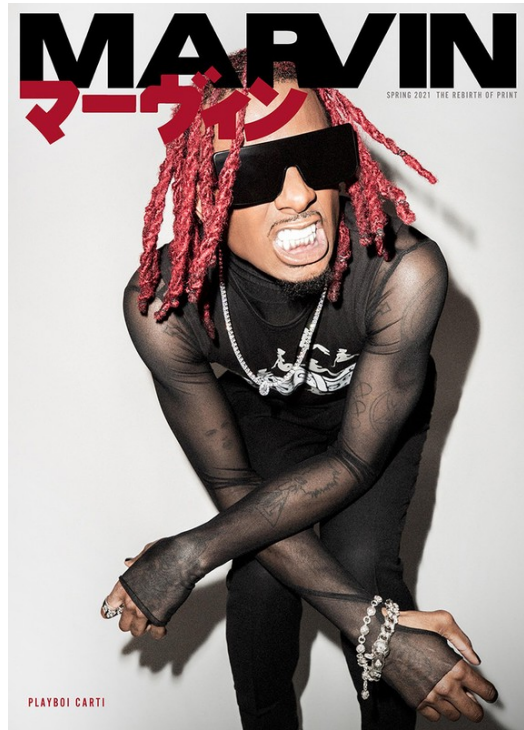
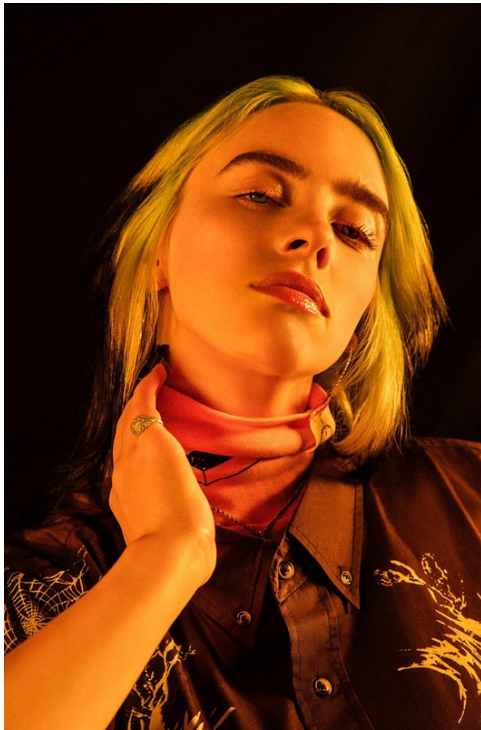
Art Department



Kenneth Cappello

www.art-dept.com

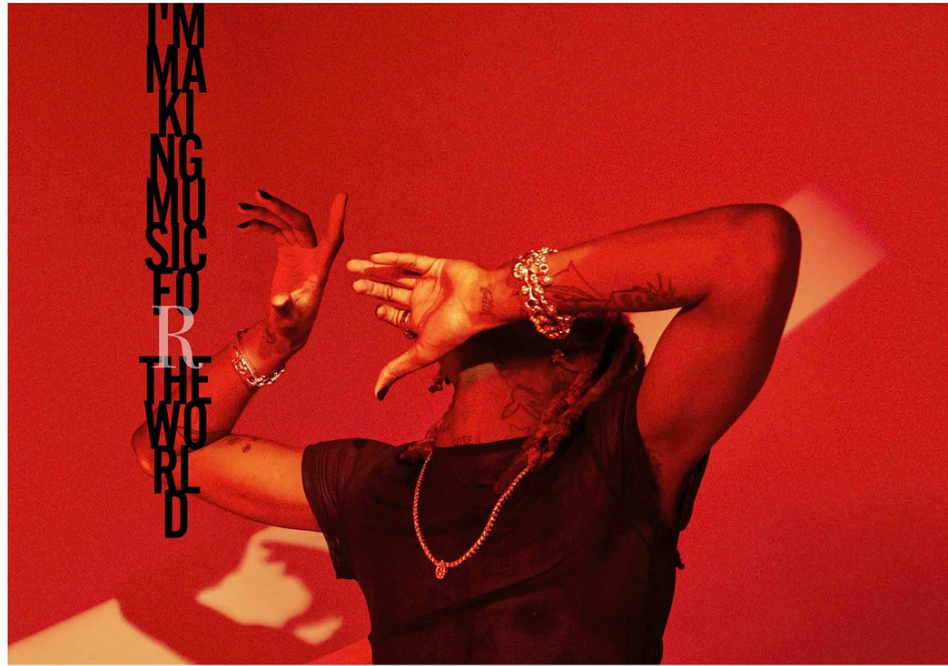
Art Department



Kenneth Cappello

www.art-dept.com

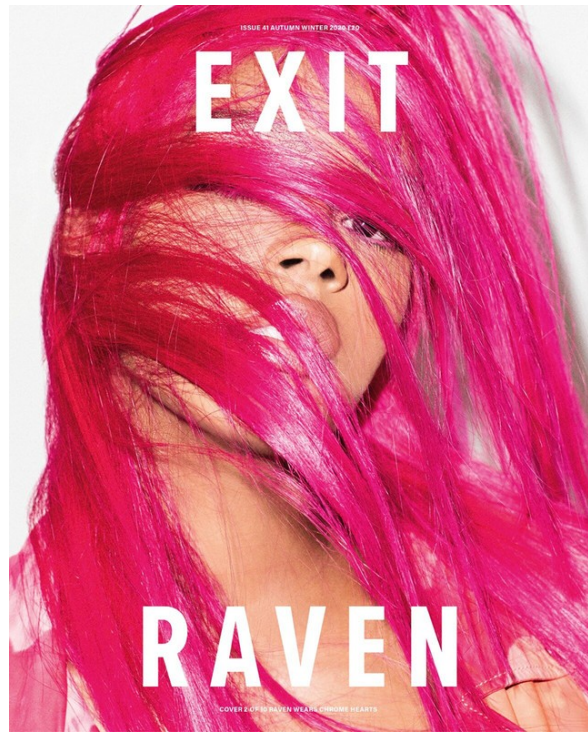
Art Department



Kenneth Cappello

www.art-dept.com

Art Department



Kenneth Cappello

www.art-dept.com

Art Department



Kenneth Cappello

www.art-dept.com

Art Department



Kenneth Cappello

www.art-dept.com

Art Department



Kenneth Cappello

www.art-dept.com

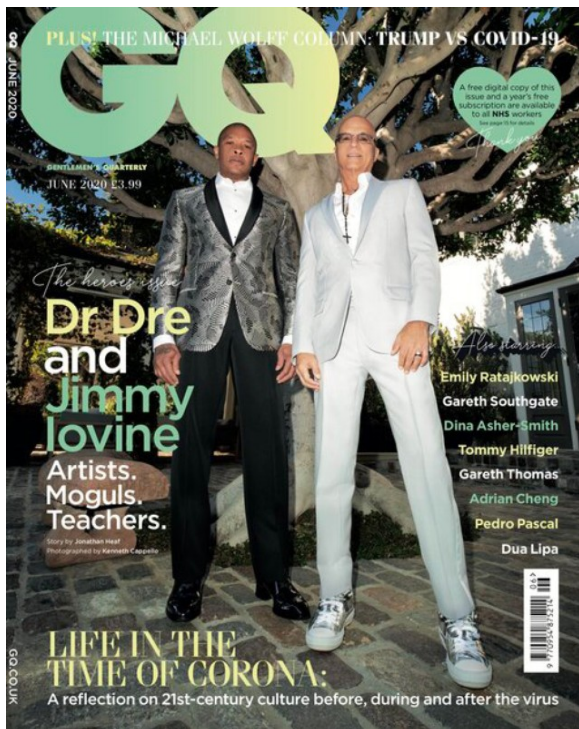
Art Department



Kenneth Cappello

www.art-dept.com

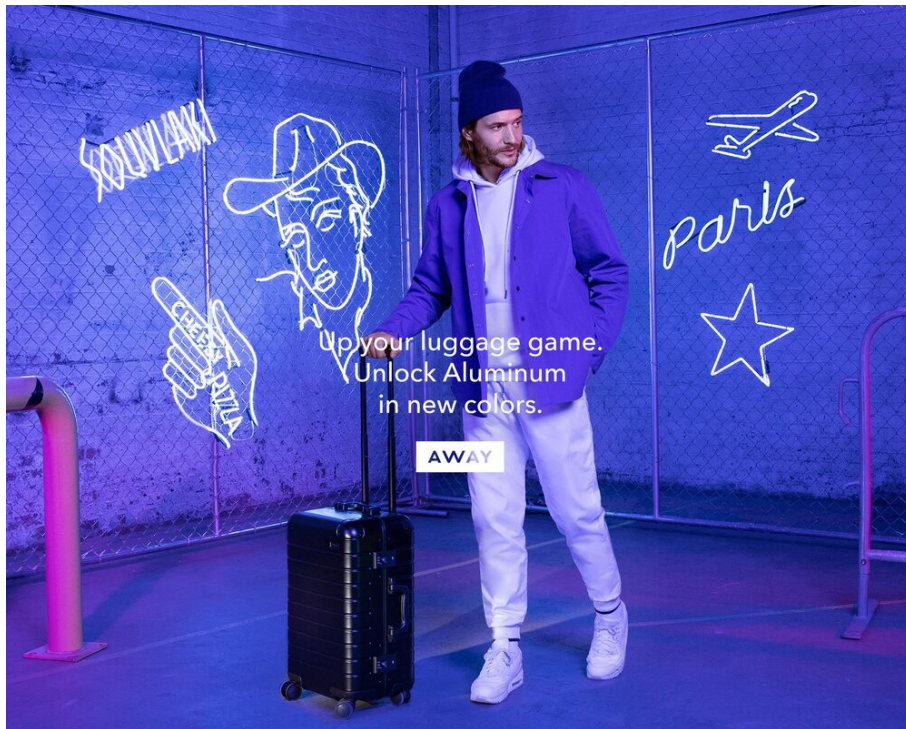
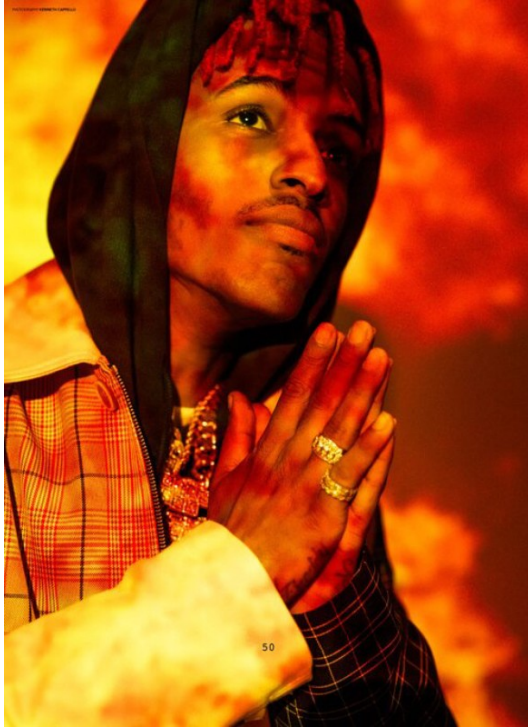
Art Department



Kenneth Cappello

www.art-dept.com

Art Department



Kenneth Cappello

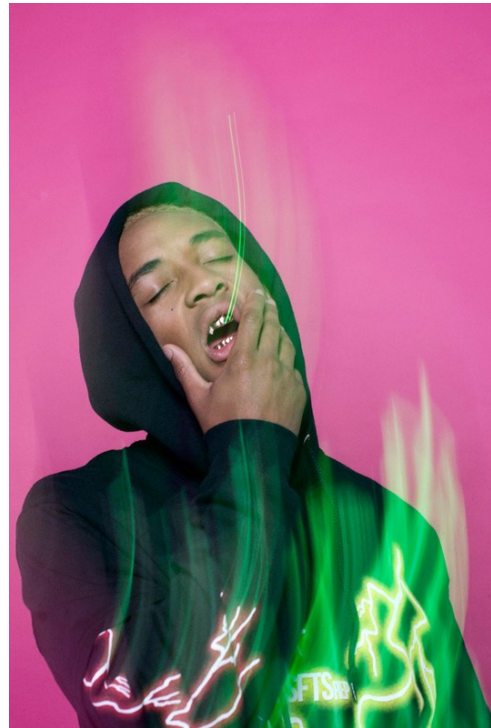
www.art-dept.com

Art Department



Kenneth Cappello

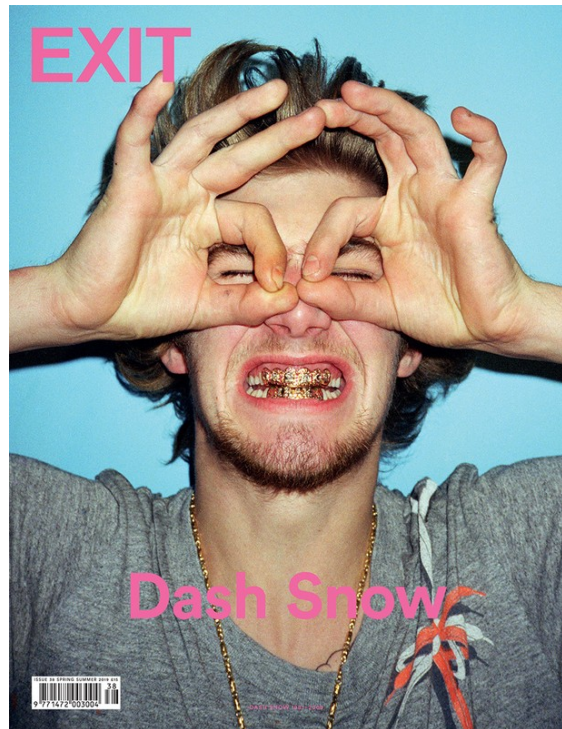
Art Department



Kenneth Cappello

www.art-dept.com

Art Department



Kenneth Cappello

www.art-dept.com

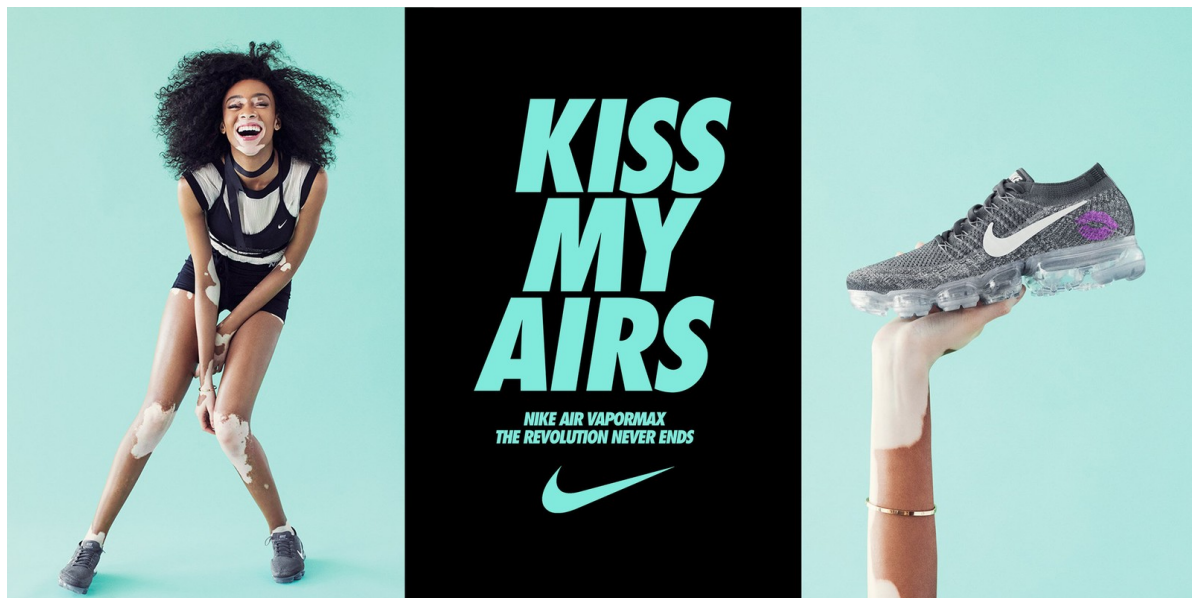
Art Department



Kenneth Cappello

www.art-dept.com

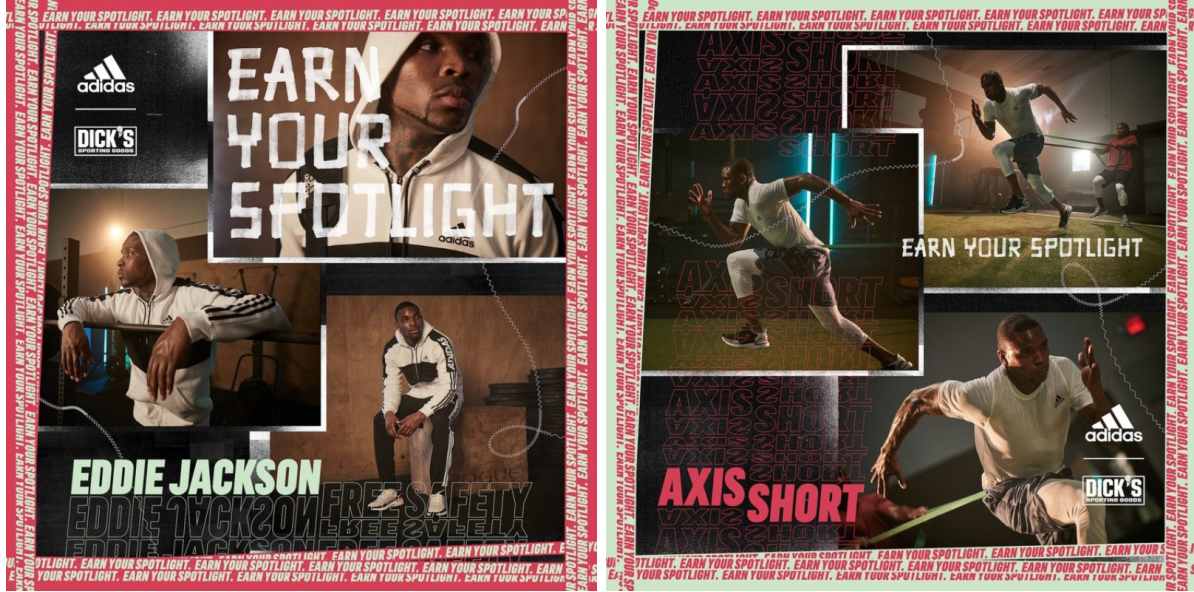
Art Department



Kenneth Cappello

www.art-dept.com

Art Department



Kenneth Cappello

www.art-dept.com

Art Department



Kenneth Cappello

www.art-dept.com

Art Department



Kenneth Cappello

www.art-dept.com

Art Department



Kenneth Cappello

www.art-dept.com

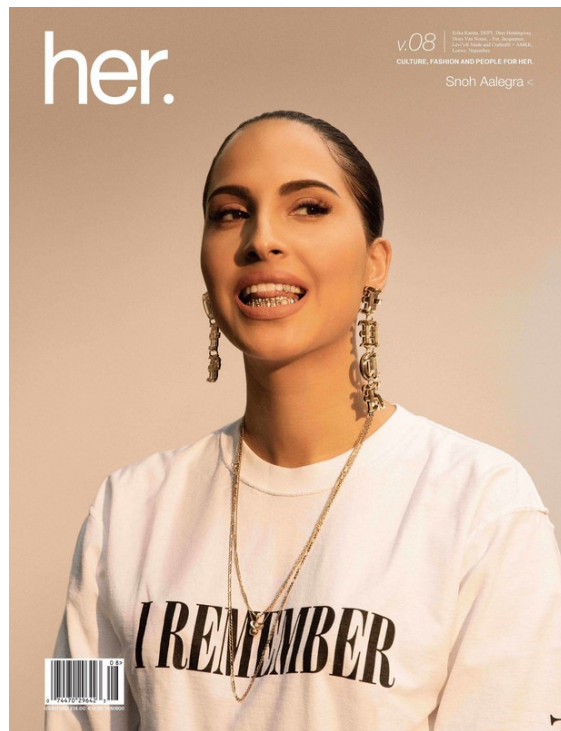
Art Department



Kenneth Cappello

www.art-dept.com

Art Department



Kenneth Cappello

www.art-dept.com

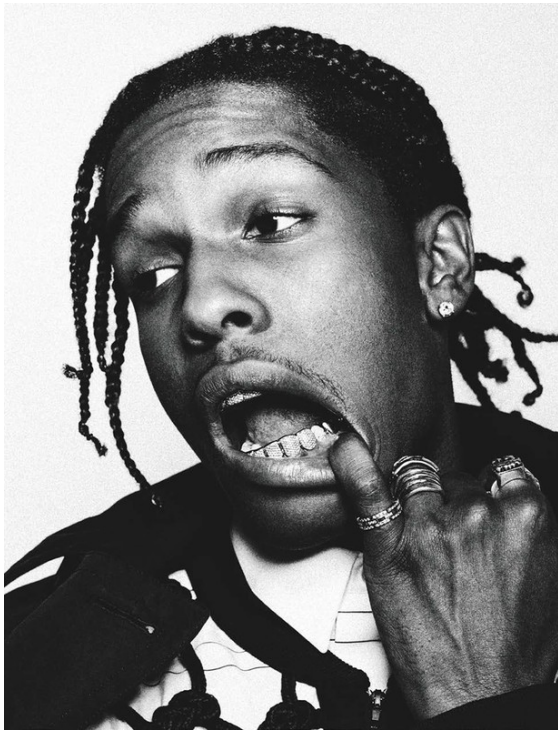
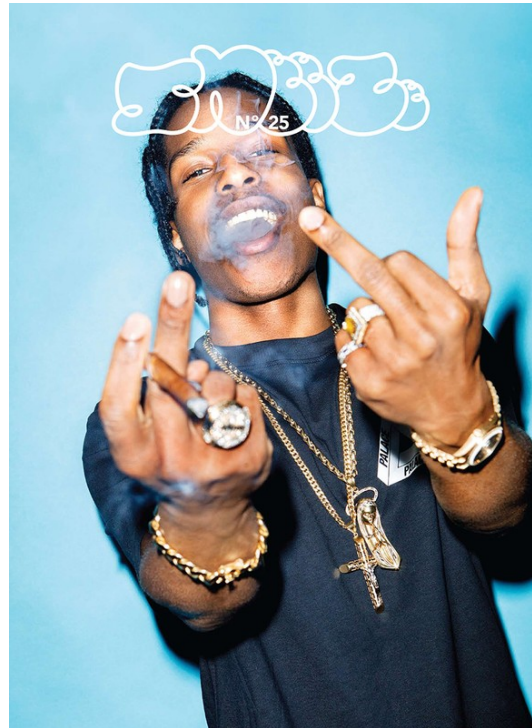
Art Department



Kenneth Cappello

www.art-dept.com

Art Department



Kenneth Cappello

Art Department



Kenneth Cappello